

**TEMPLE CITY BLDG. DIST. NO. 5**

**CONNECTION CHARGES AS INDICATED**

**NOTES:**

1. Provide stakes on the property line or property lines produced at right angles to the sewer line at the center line of each manhole.
2. No representative of the County Engineer will survey or lay out any portion of the work.
3. The owner or his authorized representative shall furnish the County Engineer with Grade Sheets and stationing for all house laterals and Y branches, and shall provide stakes for them at their proper locations with stationing plainly marked, any change in location shall be requested in writing by the owner or his representative.
4. Standard specifications dated Oct. 10, 1960, apply in the construction of this project.
5. No revisions shall be made in these plans without the approval of the County Engineer.
6. Use standard manhole frames and covers S-a-117.
7. Use standard strength pipe.
8. Use cement mortar or "Wedge-Lock" or "Speed-Seal" for all V.C.P. joints per Specs Sec. 34.4.8.
9. Resurface all trench within paved area to meet L. A. County Road Dept. or Calif. State Highway requirements in accordance with permits.
10. Excavate four feet of sewer of interference with poles, CASE III S-a-172.
11. All structures shall be brick sewer structures S-a-104.
12. For allowable leakage test, use formula No. 1, Specs Sec. 52.
13. Manhole tops in improved rights-of-way to be level with finished grade.
14. The contractor shall mark by the construction Division by telephone, location S-4747551-018131, at least twenty-four hours before starting any work under this project.

PROFILE, ALIGNMENT & GRADES OF **PG 5828**  
 J.N. 0355-53

**SANITARY SEWERS PAGE 1**

TO BE CONSTRUCTED IN  
**SANITARY SEWER BY WEST OF MULCATEL AVE.,  
 SOUTH OF BROADWAY.**

**PRIVATE CONTRACT NO. 5828**

W.S. 44

ONE SHEET

SCALE Vert. 1"=4'  
 Hor. 1"=40'

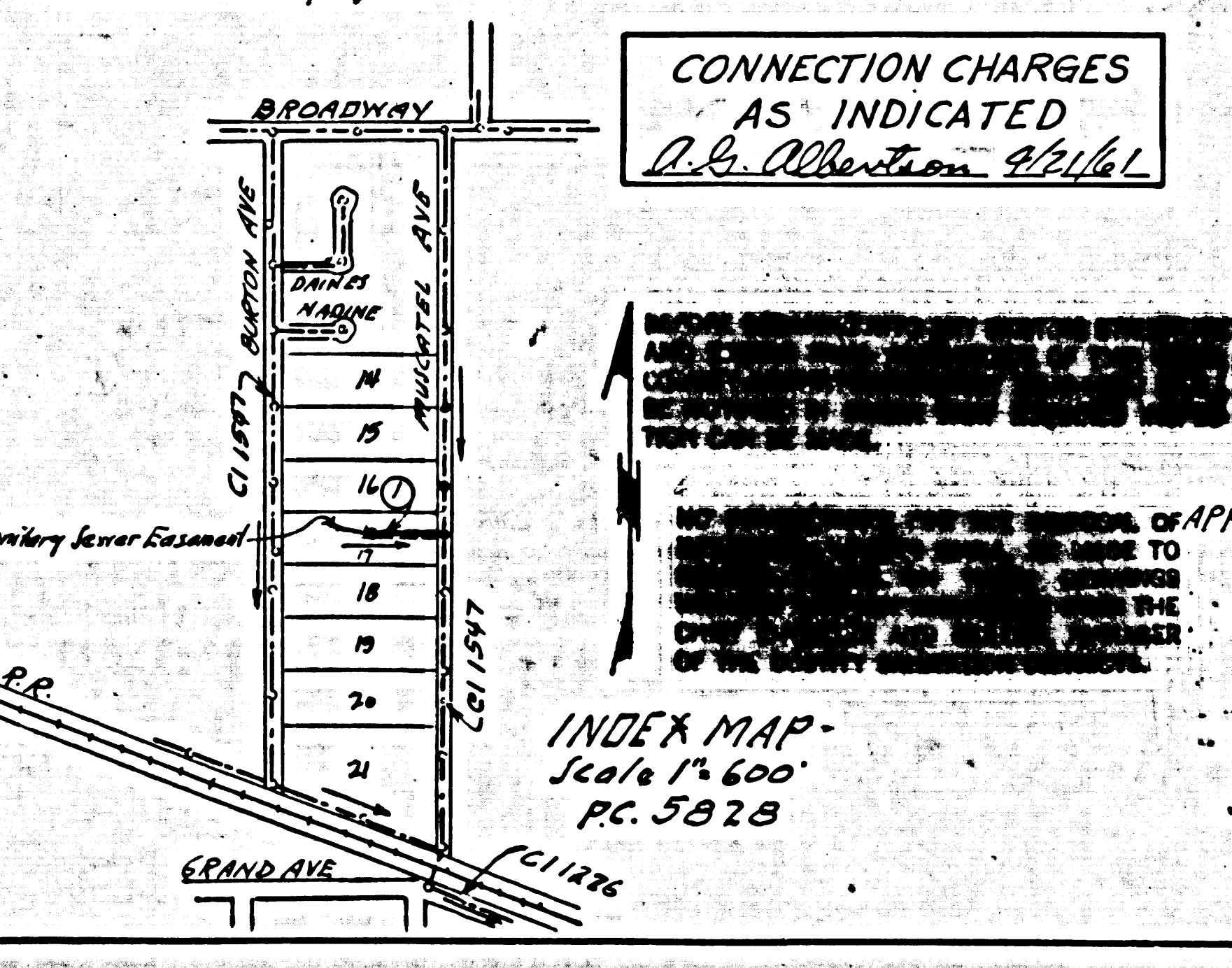
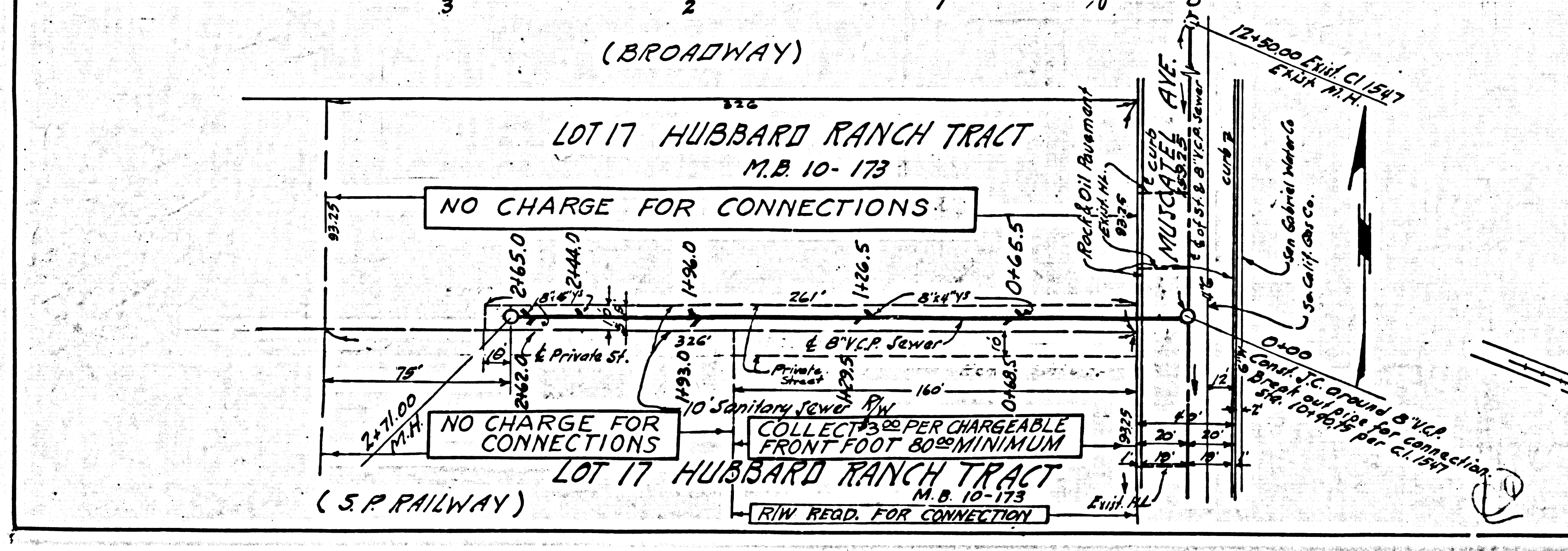
APRIL 1961

PREPARED IN THE OFFICE OF **CHAS. N. BELL**

BY: **Chas. N. Bell**  
 Registered Civil Engineer No. 2839

FOR LEGEND SEE PLAN NO. S-A 64

**30794**



**COUNTY OF LOS ANGELES, CALIFORNIA.**

APPROVED **JOHN A. LAMBIE, CO. ENGINEER** APPROVED **G.R. COMPTON, Chief Engr.**  
 OF SAN. DIST. NO. 15

BY: **C.E. Brown** ASST. SANITATION ENGINEER BY: **Chas. N. Bell** OFFICE ENGINEER

CHECKED BY: **Chas. N. Bell** OFFICE OF COUNTY ENGINEER PG. NO. 9406

SUBMITTED: **N. P. Bravender**  
 SAN GABRIEL VALLEY REGIONAL ENGINEER

NO WORK ON BROADWAY  
 SANITARY SEWER DIST. NO. 15  
 PG. 5828, 29  
 PC 5828

NO WORK ON BROADWAY  
 SANITARY SEWER DIST. NO. 15  
 PG. 5828, 29  
 PC 5828

DEPARTMENT OF COUNTY ENGINEER  
 OFFICE OF THE COUNTY ENGINEER  
 PROPERTY OF THE