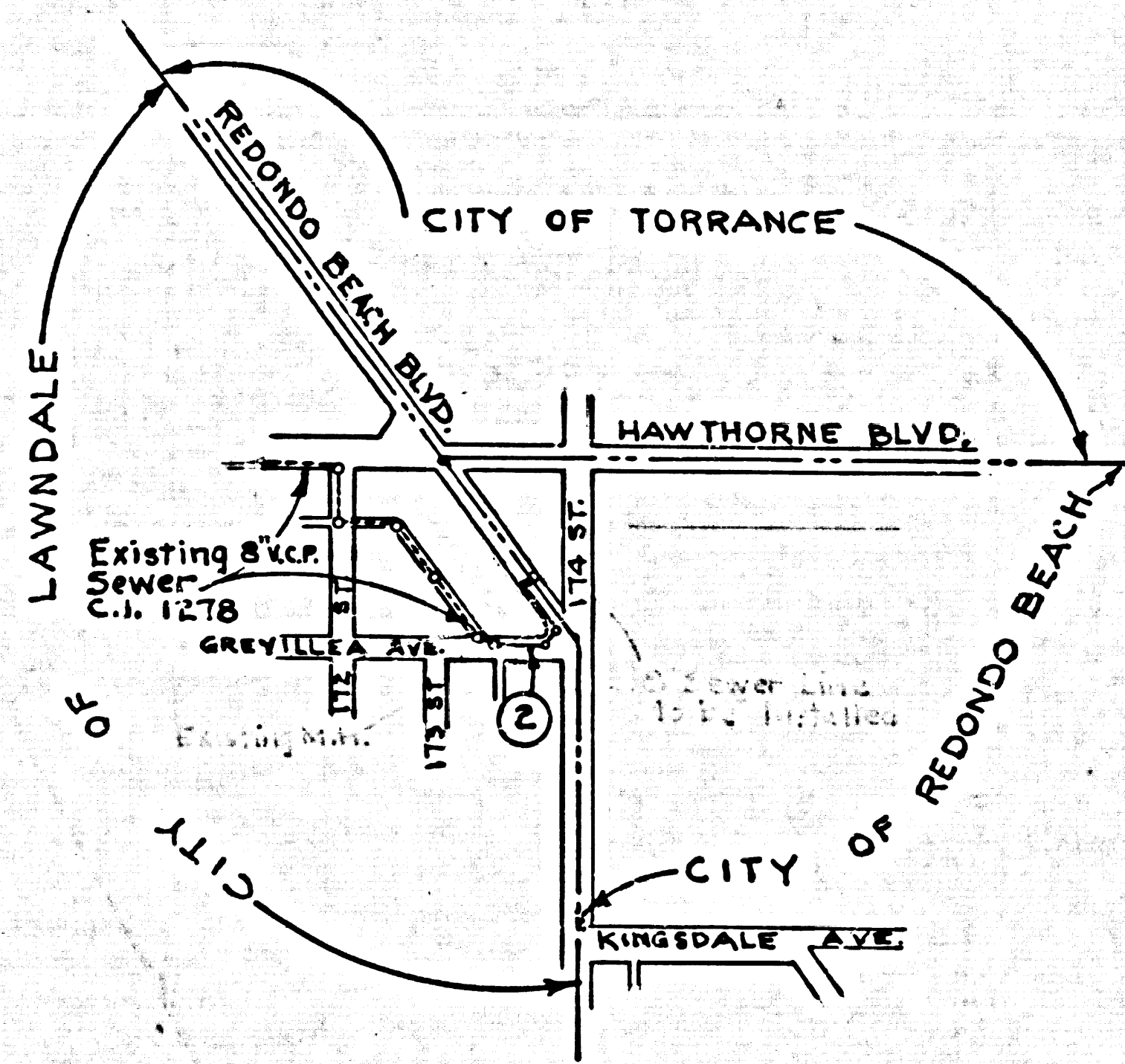


B. M. Precise Bench in the City of Torrance at Hawthorne Ave. & 174th St. on the S.E. Cor. 3.5' E. of the E. face of curb and 75.2' Southwesterly from the Mobile Gas Station Bldg., a County Engr. D.M. brass capped monument marked "55 TOR 3-1 set in conc. 10" below the surface in wall, protected by a conc. man. cover mktd. "Co. Engr. Mon.", 1960 adjusted Elev. 88.586 F.D. 2447 p.195.

BENCH MARK



INDEX MAP
SCALE: 1" = 600'

NO CONNECTIONS FOR THE DISPOSAL OF INDUSTRIAL WASTES SHALL BE MADE TO SEWERS SHOWN ON THESE DRAWINGS WITHOUT WRITTEN PERMISSION FROM THE CHIEF ENGINEER AND GENERAL MANAGER OF THE COUNTY SANITATION DISTRICTS.

LENNOX BLDG. DIST. NO. 7

PROFILE ALIGNMENT AND GRADE OF P.C. 5829
SANITARY SEWERS PAGE 1
TO BE CONSTRUCTED IN
REDONDO BEACH BLVD.

PRIVATE CONTRACT NO. 5829

W.S. 2.5

1 SHEET OF 2 PAGES

SCALE: VERT. 1" = 4' HORIZ. 1" = 40' MARCH, 1961

PREPARED IN THE OFFICES OF
F. C. Nybye Civ. Engr.
524 Esplanade Redondo Beach

30417

By: *[Signature]*
REG. C. E. NO. 370

FOR LEGEND SEE PLAN NO. S-A-64

- NOTES:
1. PROVIDE STAKES ON THE PROPERTY LINE OR PROPERTY LINES PRODUCED AT RIGHT ANGLES TO THE SEWER LINE AT THE CENTER LINE OF EACH MANHOLE.
 2. NO REPRESENTATIVE OF THE CITY ENGINEER WILL SURVEY OR LAY OUT ANY PORTION OF THE WORK.
 3. THE OWNER OR HIS AUTHORIZED REPRESENTATIVE SHALL FURNISH THE CITY ENGINEER WITH GRADE SHEETS AND STATIONING FOR ALL HOUSE LATERALS AND Y BRANCHES AND SHALL PROVIDE STAKES FOR THEM AT THEIR PROPER LOCATIONS WITH STATIONING PLAINLY MARKED. ANY CHANGE IN LOCATION SHALL BE REQUESTED IN WRITING BY THE OWNER OR HIS REPRESENTATIVE.
 4. THE PRIVATE ENGINEER SHALL FURNISH THE HOUSE LATERAL DEPTH AT THE PROPERTY LINE BELOW THE TOP OF CURB ELEVATION FOR EACH HOUSE LATERAL ON THE GRADE SHEET.
 5. NO REVISIONS SHALL BE MADE IN THESE PLANS WITHOUT THE APPROVAL OF THE CITY ENGINEER.
 6. USE STANDARD MANHOLE FRAMES AND COVERS, S-117, SPEC. AS NOTED.
 7. USE STANDARD STRENGTH PIPE EXCEPT AS NOTED.
 8. USE CEMENT MORTAR OR "WEDGE-LOC" OR "SEED-SEAL" FOR ALL V.C.P. JOINTS PER SPEC., SECS. 26 & 46.
 9. RESURFACE ALL TRENCH WITHIN PAVED AREA TO MEET CITY ROAD DEPT. OR CALIF. STATE HIGHWAY REQUIREMENTS IN ACCORDANCE WITH PERMITS.
 10. ENCASE FOUR FEET OF SEWER AT POINTS OF INTERFERENCE WITH POLES, CASE III, S-172.
 11. HOUSE LATERALS TO BE CONSTRUCTED WITH INVERTS AT PROPERTY LINE 6 FEET BELOW CURB GRADE EXCEPT AS NOTED.
 12. ALL STRUCTURES SHALL BE BRICK SEWER STRUCTURES, S-104, EXCEPT AS NOTED.
 13. FOR ALLOWABLE LEAKAGE TEST USE FORMULA NO. 1, SPEC., SEC. 54.
 14. MANHOLE TOPS IN UNIMPROVED RIGHTS-OF-WAY TO BE SIX INCHES ABOVE FINISHED GRADE.
 15. THE CONTRACTOR SHALL NOTIFY THE CONSTRUCTION & STORM DRAIN DIVISION BY TELEPHONE, MADISON 5-4107, EXT. 5152 AT LEAST TWENTY-FOUR HOURS BEFORE STARTING ANY WORK UNDER THIS CONTRACT.
 16. SPECIFICATIONS DATED OCT. 10, 1960 APPLY IN THE CONSTRUCTION OF THIS PROJECT.

NOTE:

The location of all existing structures & substructures has been obtained from the best information available. F. C. Nybye Civ. Engr. assumes no responsibility for the accuracy nor completeness of this information. The contractor must exercise extreme caution in all excavating and/or jacking.

CHARGE NOTE
COLLECT CHARGES AS INDICATED

APPROVED: *[Signature]*
ENGINEER, CITY OF REDONDO BEACH

APPROVED: *[Signature]*
INDUSTRIAL WASTE DIVISION

NOTES:
GRADES TO WHICH THIS IMPROVEMENT IS TO BE CONSTRUCTED ARE SHOWN ON PLANS AND PROFILES. GRADE POINTS FOR TOP OF CURBS, CENTER LINE OF STREETS, OR CENTER LINE OF ALLEYS ARE SHOWN BY CIRCLES ON PROFILES AT ALL POINTS BETWEEN DESIGNATED POINTS THE GRADE SHALL BE ESTABLISHED SO AS TO CONFORM TO A STRAIGHT LINE DRAWN BETWEEN SAID DESIGNATED POINTS.
ELEVATIONS ARE IN FEET ABOVE U.S.C. & G.S. SEA LEVEL DATUM OF 1929.
THIS DRAWING AND THE DATA HEREON ARE HEREBY MADE A PART OF THE SPECIFICATIONS.
WORK SHALL BE CONSTRUCTED ACCORDING TO SPECIFICATIONS ON FILE IN THE OFFICE OF THE CITY ENGINEER AND SHALL BE PROSECUTED ONLY IN THE PRESENCE OF THE CITY ENGINEER.
BEFORE WORK CAN BE STARTED, THE CONTRACTOR MUST OBTAIN A PERMIT TO EXCAVATE IN CITY STREETS FROM THE LAWDALE AND REDONDO BEACH CITY ENGINEERS AND MAKE A DEPOSIT WITH THE CITY ENGINEER ROOM 310 CITY ENGINEER BUILDING, 408 WEST 5TH ST., SUFFICIENT TO COVER THE COST OF CONSTRUCTION INSPECTION AND RECORD PLANS.
APPROVAL OF THIS PLAN BY THE CITY OF LAWDALE DOES NOT CONSTITUTE A REPRESENTATION AS TO THE ACCURACY OF THE LOCATION OF OR THE EXISTENCE OR NON-EXISTENCE OF ANY UNDERGROUND UTILITY PIPE, OR STRUCTURE WITHIN THE LIMITS OF THIS PROJECT. THIS NOTE APPLIES TO ALL PAGES.
IF WORK IS TO BE DONE IN A STATE HIGHWAY, A PERMIT MUST BE OBTAINED FROM THE STATE OF CALIFORNIA, DIVISION OF HIGHWAYS, 126 SOUTH SPRING STREET.

CITY OF LAWDALE, CALIFORNIA

APPROVED, JOHN A. LAMBIE, CITY ENGINEER APPROVED, C. R. COMPTON, CHIEF ENGINEER
CO. SAN. DIST. NO. 5

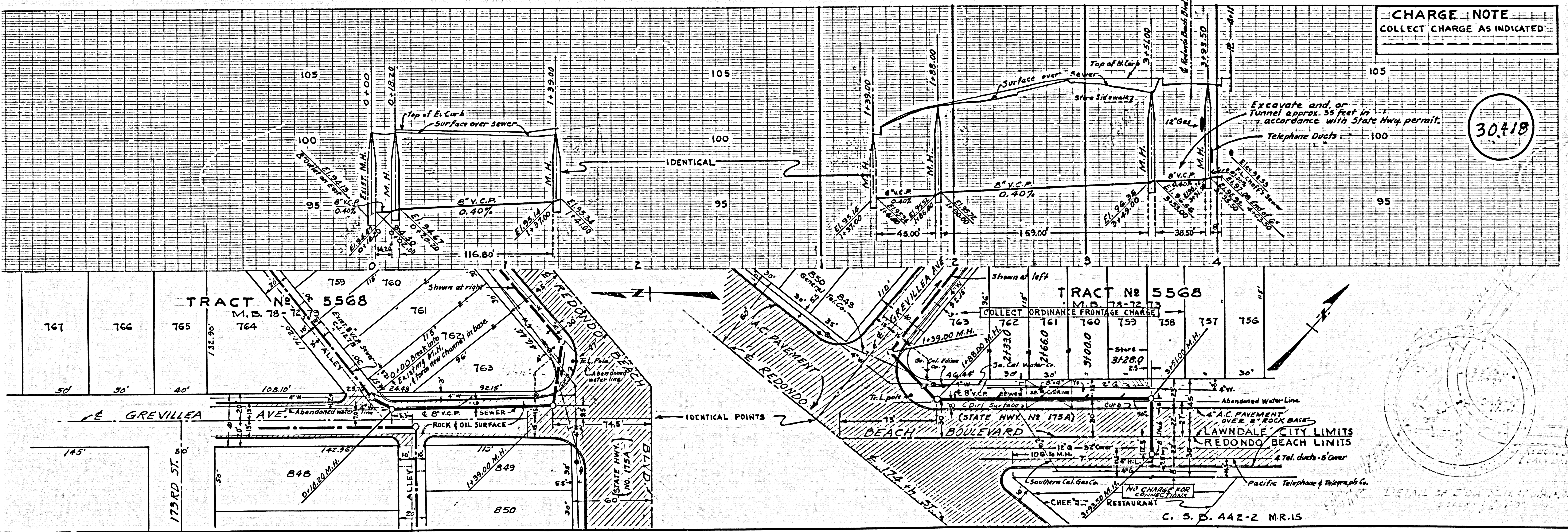
BY: *[Signature]* ASST. SANITATION ENGINEER BY: *[Signature]* OFFICE ENGINEER

CHECKED BY: *[Signature]* 3-23-61
OFFICE OF CITY ENGINEER, REG. C. E. NO. 946L

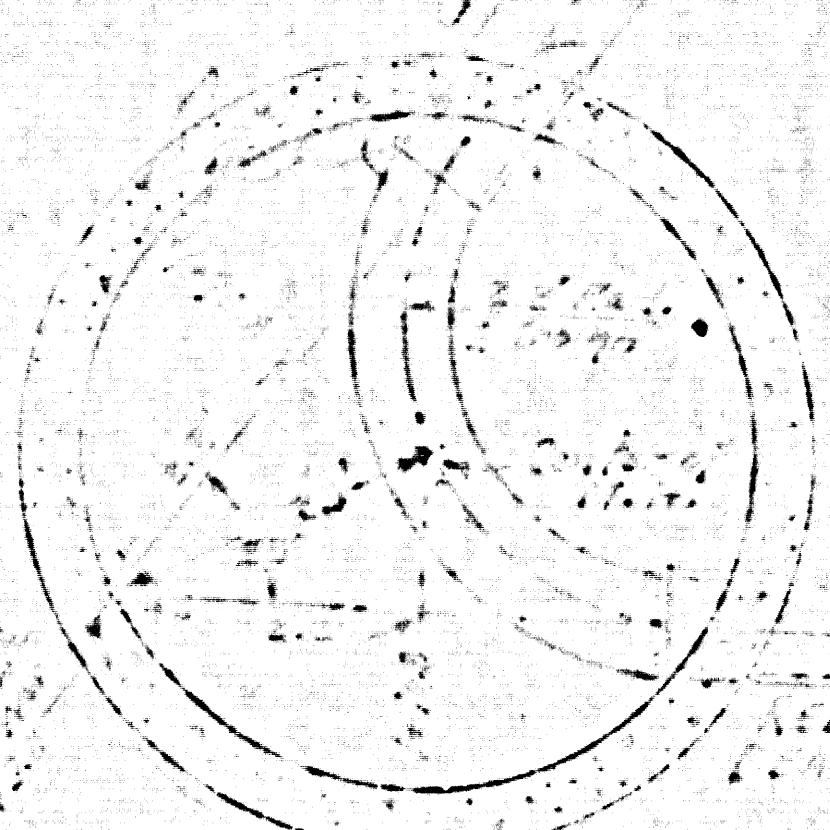
SUBMITTED: *[Signature]*
PALOM VERDES-CENTINELA VALLEY REGIONAL ENGINEER

P.C. 5829 PAGE 2

CHARGE NOTE
COLLECT CHARGE AS INDICATED



30418



C. S. E. 442-2 M.R.15