

LANCASTER BLDG. DIST. NO. 8

BENCH MARK
 S.T. 904
 L.A. Co. Sur. B.C. Bench Mon. Set 5' above surface.
 Conc. Post on Ave. M 5' 0.5 mile West of 60' M
 St West 3' 31.5' of of E. Ave. M 1' 1' N. of
 White Witness Post marked B.M. 104-16
 1958 R.G. 5969 Baseline ELEV. 2566.905

- NOTES:**
- PROVIDE STAKES ON THE PROPERTY LINE OR PROPERTY LINES PRODUCED AT RIGHT ANGLES TO THE SEWER LINE AT THE CENTER LINE OF EACH MANHOLE.
 - NO REPRESENTATIVE OF THE COUNTY ENGINEER WILL SURVEY OR LAY OUT ANY PORTION OF THE WORK.
 - THE OWNER OR HIS AUTHORIZED REPRESENTATIVE SHALL FURNISH THE COUNTY ENGINEER WITH GRADE SHEETS AND STATIONING FOR ALL HOUSE LATERALS AND Y BRANCHES AND SHALL PROVIDE STAKES FOR THEIR PROPER LOCATIONS WITH STATIONING PLAINLY MARKED. ANY CHANGE IN LOCATION SHALL BE REQUESTED IN WRITING BY THE OWNER OR HIS REPRESENTATIVE.
 - THE PRIVATE ENGINEER SHALL FURNISH THE HOUSE LATERAL DEPTH AT THE PROPERTY LINE BELOW THE TOP OF CURB ELEVATION FOR EACH HOUSE LATERAL ON THE GRADE SHEET.
 - NO REVISIONS SHALL BE MADE IN THESE PLANS WITHOUT THE APPROVAL OF THE COUNTY ENGINEER.
 - USE STANDARD MANHOLE FRAMES AND COVERS, S-117, EXCEPT AS NOTED.
 - USE STANDARD STRENGTH PIPE EXCEPT AS NOTED.
 - RESURFACE ALL TRENCH WITHIN PAVED AREA TO MEET L.A. COUNTY ROAD DEPT. OR CALIF. STATE HIGHWAY REQUIREMENTS IN ACCORDANCE WITH PERMITS.
 - ENCASE FOUR FEET OF SEWER AT POINTS OF INTERFERENCE WITH POLES, CASE III, S-172.
 - HOUSE LATERALS TO BE CONSTRUCTED WITH INVERTS AT PROPERTY LINE 6 FEET BELOW CURB GRADE EXCEPT AS NOTED.
 - ALL STRUCTURES SHALL BE BRICK SEWER STRUCTURES, S-104.
 - FOR ALLOWABLE LEAKAGE TEST USE FORMULA NO. 1 SPEC. SEC. 64.
 - MANHOLE TOPS IN UNIMPROVED RIGHTS-OF-WAY TO BE SIX INCHES ABOVE FINISHED GRADE.
 - THE CONTRACTOR SHALL NOTIFY THE CONSTRUCTION DIVISION BY TELEPHONE, MADISON 5-4747, EXT. 54, AT LEAST TWENTY-FOUR HOURS BEFORE STARTING ANY WORK UNDER THIS CONTRACT.
 - STANDARD SPECIFICATIONS DATED OCTOBER 10, 1960 APPLY IN THE CONSTRUCTION OF THIS PROJECT.
 - IF THE EXISTENCE AND LOCATION OF ANY UNDERGROUND UTILITY PIPES OR STRUCTURES SHOWN ON THESE PLANS ARE OBTAINED BY A SEARCH OF THE AVAILABLE RECORDS TO THE BEST OF OUR KNOWLEDGE THERE ARE NO EXISTING UTILITIES EXCEPT AS SHOWN ON THIS MAP.
 - THE CONTRACTOR IS REQUIRED TO TAKE PRECAUTIONARY MEASURES TO PROTECT THE UTILITY LINES SHOWN AND ANY OTHER LINES NOT OF RECORD OR NOT SHOWN ON THIS DRAWING.
 - Use mechanical compression joints made of fibreglass or polyurethane commonly known as "Mudge-Lock" or "Speed Seal" for all P.C. A joints per S.P.C. 2005, 26 & 27.

TRACT No 26565
 M.B. 673-25/26
 PRIVATE CONTRACT NO. 5830

W.S. 71
 7 SHEETS; 14 PAGES
 SCALE: VERT. 1" = 4'
 HORIZ. 1" = 40'
 AUGUST, 1961
 PREPARED IN THE OFFICES OF
ROSENTHAL ENGINEERING COMPANY

31443

By Arthur J. Rosenthal
 REG. C. E. NO. 2205

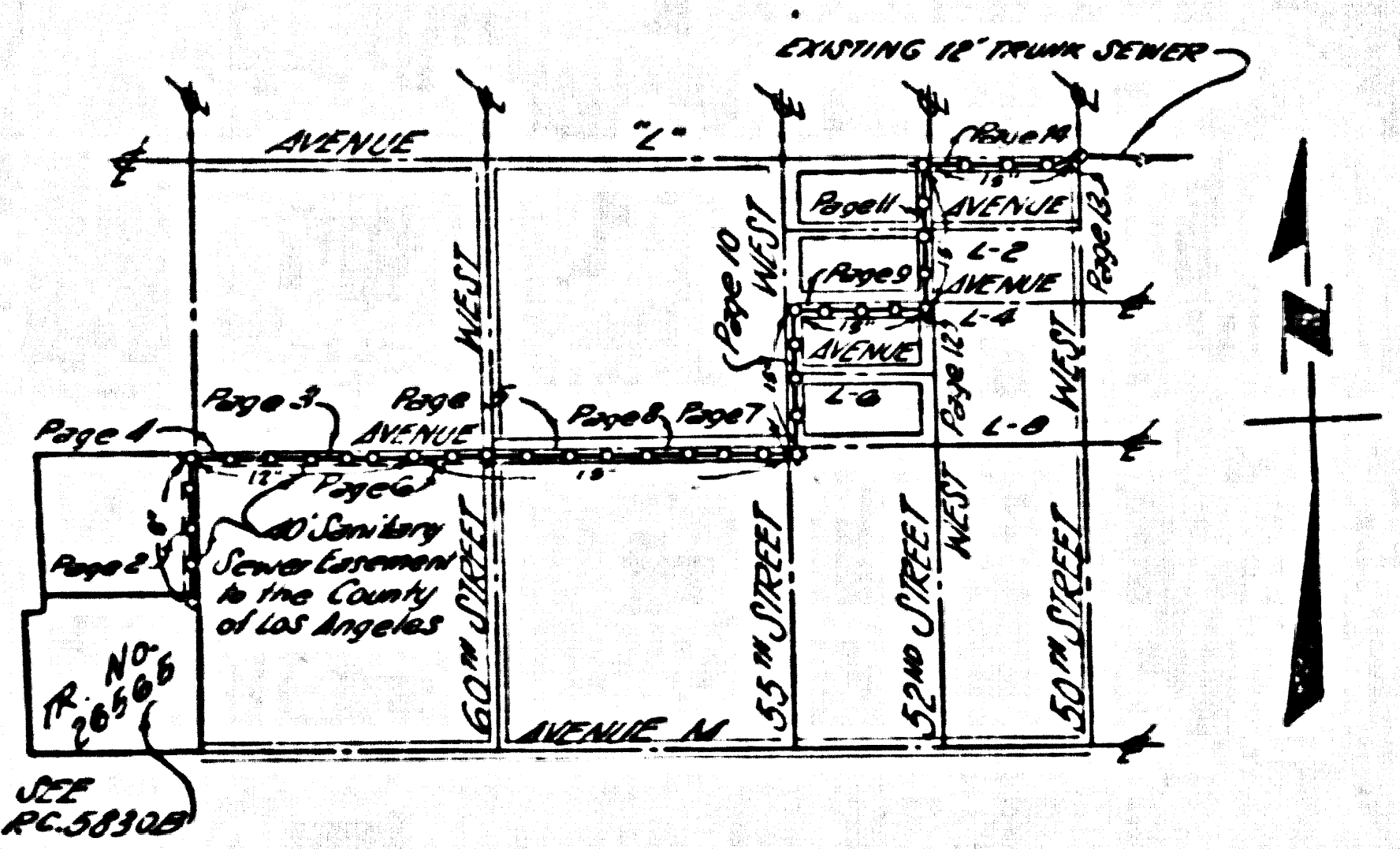
FOR LEGEND SEE PLAN NO. S-A-64

NOTE:
 GRADES TO WHICH THIS IMPROVEMENT IS TO BE CONSTRUCTED ARE SHOWN ON PLANS AND PROFILES. GRADE POINTS FOR TOP OF CURBS, CENTER LINE OF STREETS, OR CENTER LINE OF ALLEYS ARE SHOWN BY CIRCLES ON PROFILES AT ALL POINTS BETWEEN DESIGNATED POINTS. THE GRADE SHALL BE ESTABLISHED SO AS TO CONFORM TO A STRAIGHT LINE DRAWN BETWEEN SAID DESIGNATED POINTS.
 ELEVATIONS ARE IN FEET ABOVE U.S.C. & G.S. SEA LEVEL DATUM OF 1929.
 THIS DRAWING AND THE DATA HEREON ARE HEREBY MADE A PART OF THE SPECIFICATIONS.
 WORK SHALL BE CONSTRUCTED ACCORDING TO SPECIFICATIONS ON FILE IN THE OFFICE OF THE COUNTY ENGINEER AND SHALL BE PROSECUTED ONLY IN THE PRESENCE OF THE COUNTY ENGINEER.
 BEFORE WORK CAN BE STARTED THE CONTRACTOR MUST OBTAIN A PERMIT TO EXCAVATE IN COUNTY STREETS FROM THE L.A. COUNTY ROAD DEPT. DISTRICT OFFICE NO. 8 AND PAY A FEE TO THE COUNTY ENGINEER ROOM 310 COUNTY ENGINEER BLDG. JOB NO. 2-57, SUFFICIENT TO COVER THE COST OF CONSTRUCTION INSPECTION AND RECORD PLANS.
 APPROVAL OF THIS PLAN BY THE COUNTY OF LOS ANGELES DOES NOT CONSTITUTE A REPRESENTATION AS TO THE ACCURACY OF THE LOCATION OR OF THE EXISTENCE OR NON-EXISTENCE OF ANY UNDERGROUND UTILITY PIPE, OR STRUCTURE WITHIN THE LIMITS OF THIS PROJECT. THIS NOTE APPLIES TO ALL PAGES.
 IF WORK IS TO BE DONE IN A STATE HIGHWAY, A PERMIT MUST BE OBTAINED FROM THE STATE OF CALIFORNIA, DIVISION OF HIGHWAYS, 128 SOUTH SPRING STREET.

COUNTY OF LOS ANGELES, CALIFORNIA

APPROVED, JOHN A. LAMBIE, COUNTY ENGINEER
 APPROVED, J.B. [Signature], CHIEF ENGINEER
 CO. SAN. DIST. NO. 14
 BY W.H. Hughes SANITATION ENGINEER
 BY J. [Signature] OFFICE ENGINEER
 CHECKED BY W. [Signature] 9-12-61
 OFFICE OF COUNTY ENGINEER, REG. C. E. NO. 2406

Recommended: H.M. [Signature] 9/17/61
 ANTELOPE VALLEY REGIONAL OFFICE



KEY MAP
 SCALE: 1" = 2000'
 P.C. 5830

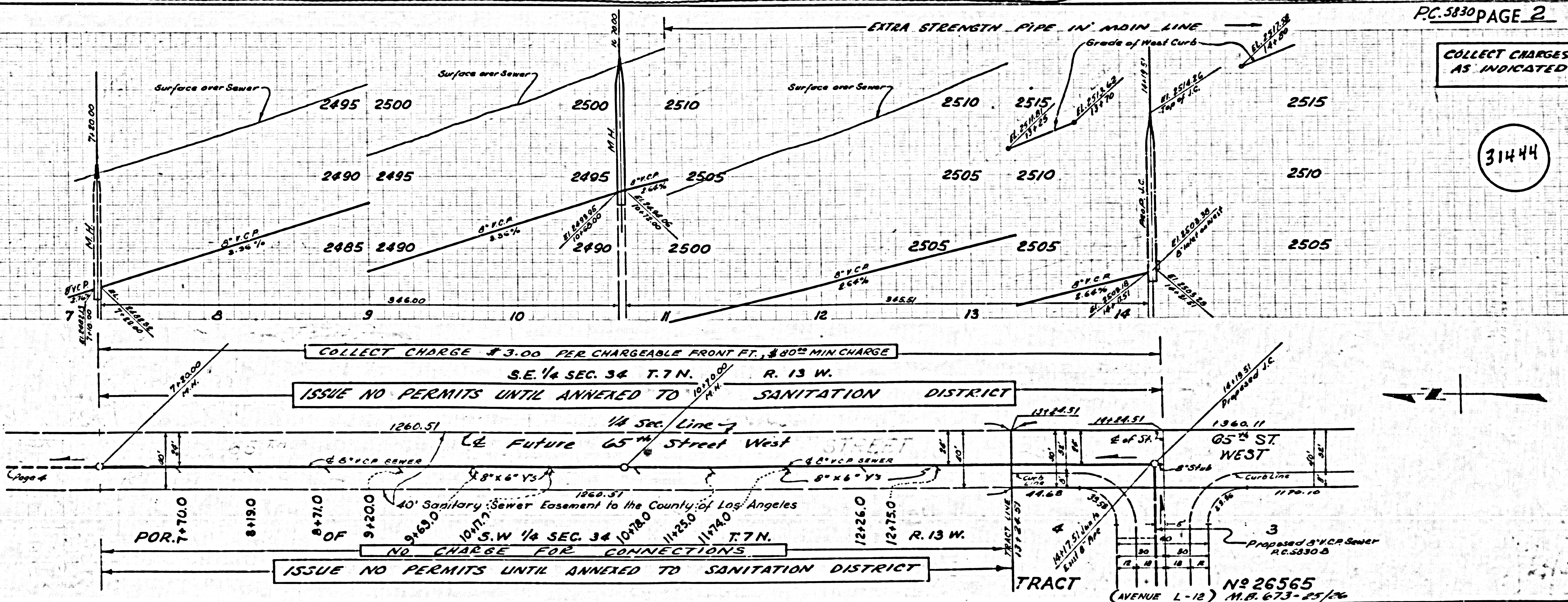
BEFORE BREAKING INTO ANY EXISTING STRUCTURE AND BEFORE FINAL ACCEPTANCE OF THIS WORK, COUNTY SANITATION DISTRICT (DU 4-1281) SHALL BE NOTIFIED IN ORDER THAT REQUIRED INSPECTION CAN BE MADE.

COLLECT CHARGES AS INDICATED
Wm. [Signature] 9/17/61

NO CONNECTIONS FOR THE DISPOSAL OF INDUSTRIAL WASTES SHALL BE MADE TO SEWERS SHOWN ON THESE DRAWINGS WITHOUT WRITTEN PERMISSION FROM THE CHIEF ENGINEER AND GENERAL MANAGER OF THE COUNTY SANITATION DISTRICTS.

Revision Approved: H.M. [Signature] 9/17/61
 Pages 9 & 10 Move Sewer to 23' E of E.
 Page 9B Move Sewer to 5' So of E.

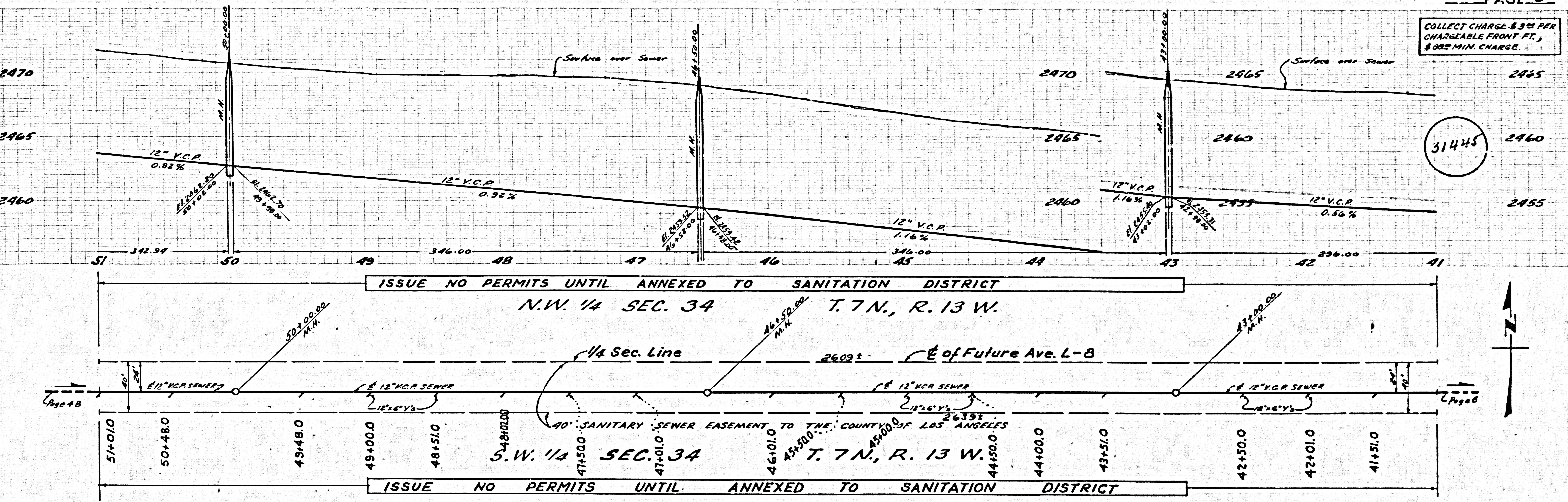
Revision Approved: H.M. [Signature] 10/24/61
 Pages 9 & 10 Move Sewer to 12' E of E.



COLLECT CHARGES AS INDICATED

31444

COLLECT CHARGE \$3.00 PER CHARGEABLE FRONT FT., \$80.00 MIN. CHARGE.



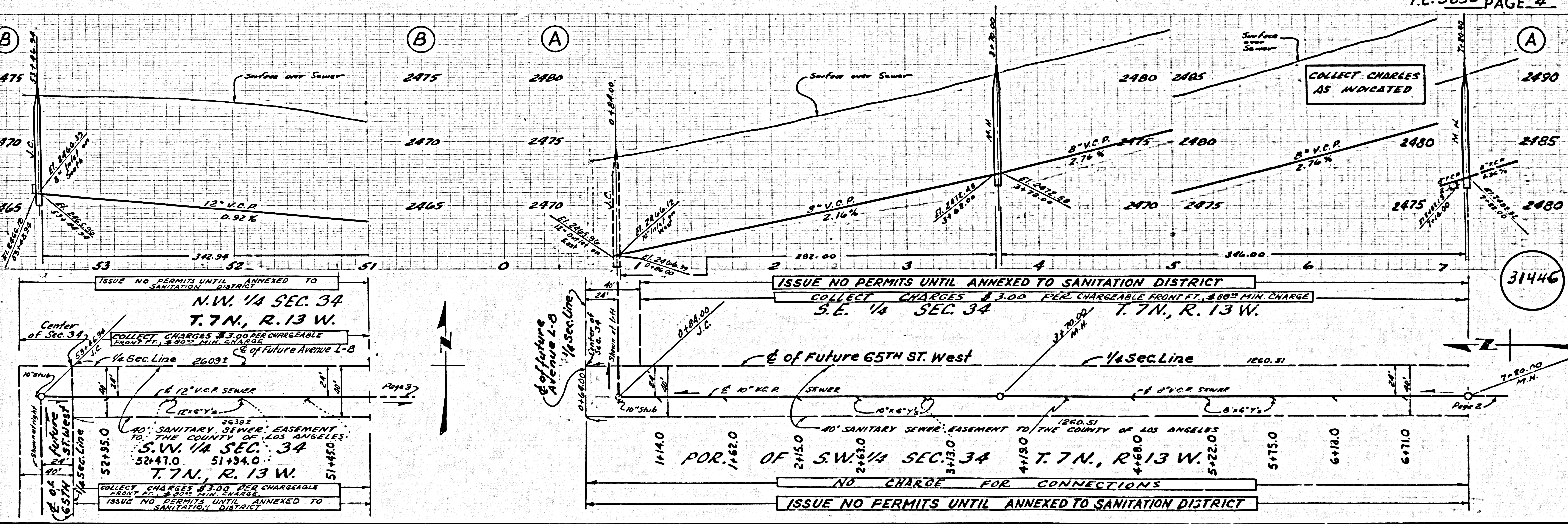
ISSUE NO PERMITS UNTIL ANNEXED TO SANITATION DISTRICT

N.W. 1/4 SEC. 34 T. 7N., R. 13 W.

ISSUE NO PERMITS UNTIL ANNEXED TO SANITATION DISTRICT

S.W. 1/4 SEC. 34 T. 7N., R. 13 W.

COLLECT CHARGES AS INDICATED



ISSUE NO PERMITS UNTIL ANNEXED TO SANITATION DISTRICT

COLLECT CHARGES \$3.00 PER CHARGEABLE FRONT FT., \$80.00 MIN. CHARGE

S.E. 1/4 SEC. 34 T. 7N., R. 13 W.

ISSUE NO PERMITS UNTIL ANNEXED TO SANITATION DISTRICT

NO CHARGE FOR CONNECTIONS

40' SANITARY SEWER EASEMENT TO THE COUNTY OF LOS ANGELES

E of Future 65th St. West

1/4 Sec. Line

Center of Sec. 34

N.W. 1/4 SEC. 34 T. 7N., R. 13 W.

COLLECT CHARGES \$3.00 PER CHARGEABLE FRONT FT., \$80.00 MIN. CHARGE

S.W. 1/4 SEC. 34 T. 7N., R. 13 W.

40' SANITARY SEWER EASEMENT TO THE COUNTY OF LOS ANGELES

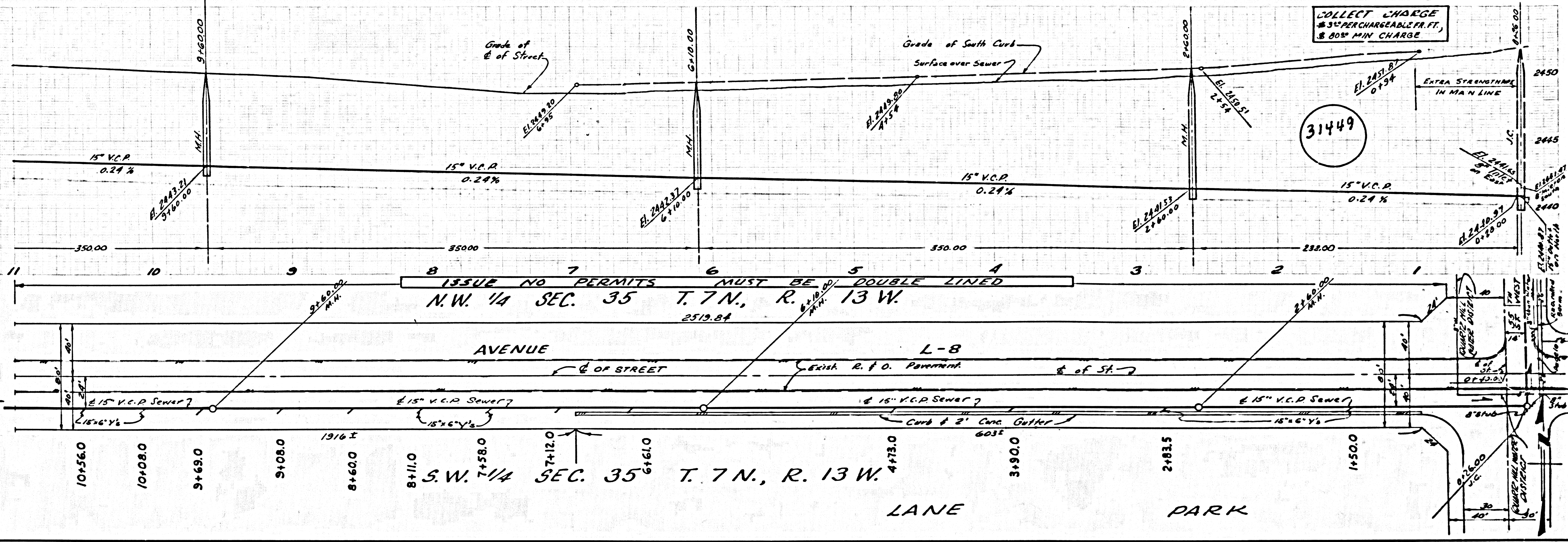
E of Future Avenue L-B

1/4 Sec. Line

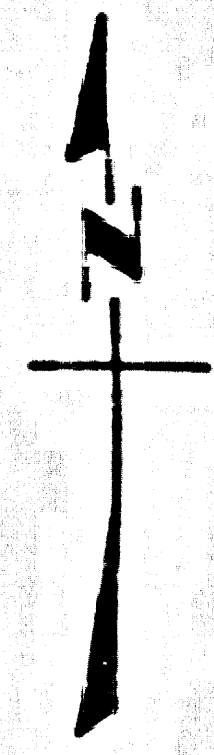
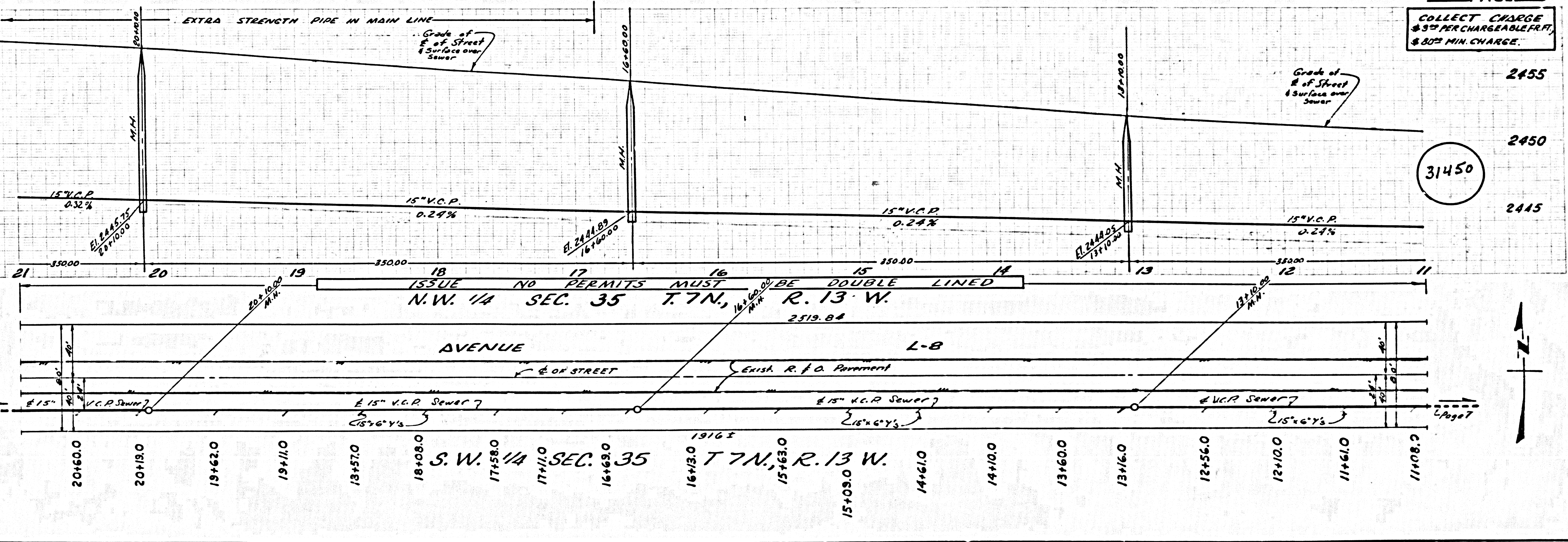
Center of Sec. 34

N.W. 1/4 SEC. 34 T. 7N., R. 13 W.

COLLECT CHARGE
\$3⁰⁰ PER CHARGEABLE FR. FT.,
\$80⁰⁰ MIN. CHARGE

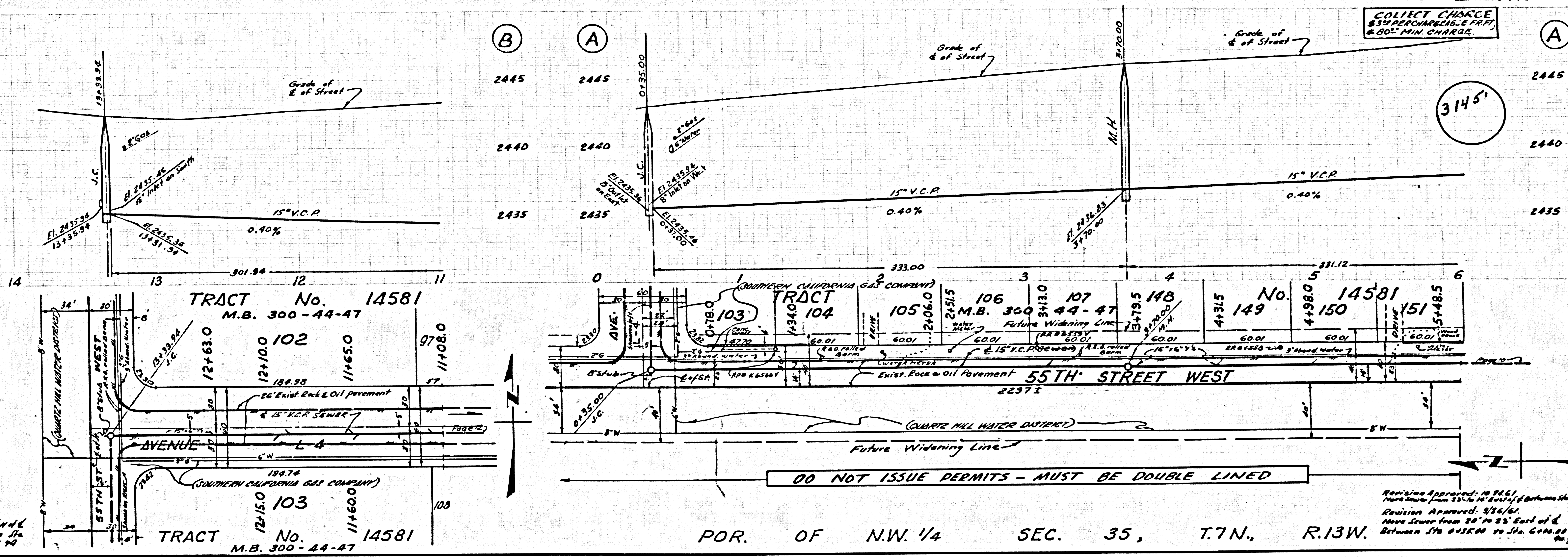


COLLECT CHARGE
\$3⁰⁰ PER CHARGEABLE FR. FT.,
\$80⁰⁰ MIN. CHARGE



SEE PAGE 7 FOR LEGEND

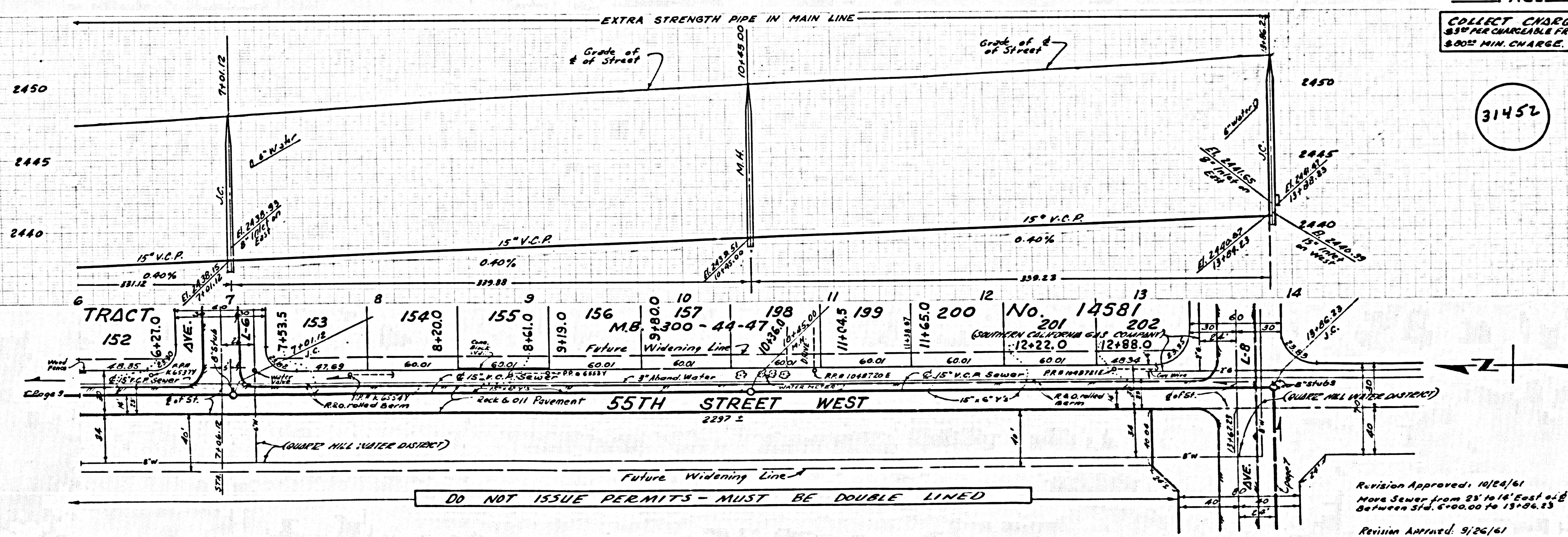
COLLECT CHARGE \$35 PER CHARGEABLE FR. FT. & 80¢ MIN. CHARGE.



POR. OF N.W. 1/4 SEC. 35, T.7N., R.13W.

Revision Approved: 10/24/61
 Move Sewer from 23' to 25' East of d.
 Between Sta. 6+00.00 to 6+00.00
 M.B.

COLLECT CHARGE \$35 PER CHARGEABLE FR. FT. & 80¢ MIN. CHARGE.

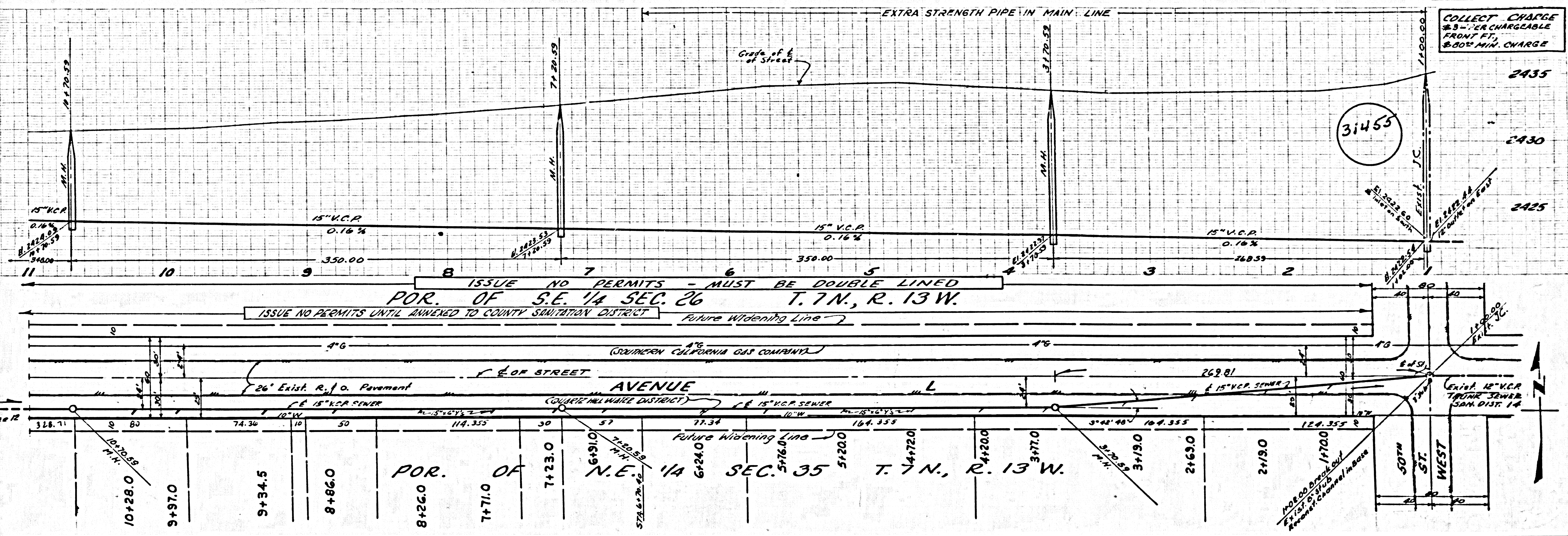


POR. OF N.W. 1/4 SEC. 35, T.7N., R.13W.

Revision Approved: 10/24/61
 Move Sewer from 25' to 16' East of d.
 Between Sta. 6+00.00 to 15+86.25
 M.B.

Revision Approved: 9/26/61
 Move Sewer from 20' to 23' East of d.
 Between Sta. 6+00.00 to 15+86.25
 M.B.

COLLECT CHARGE
\$3 PER CHARGEABLE
FRONT FT.
\$800 MIN. CHARGE

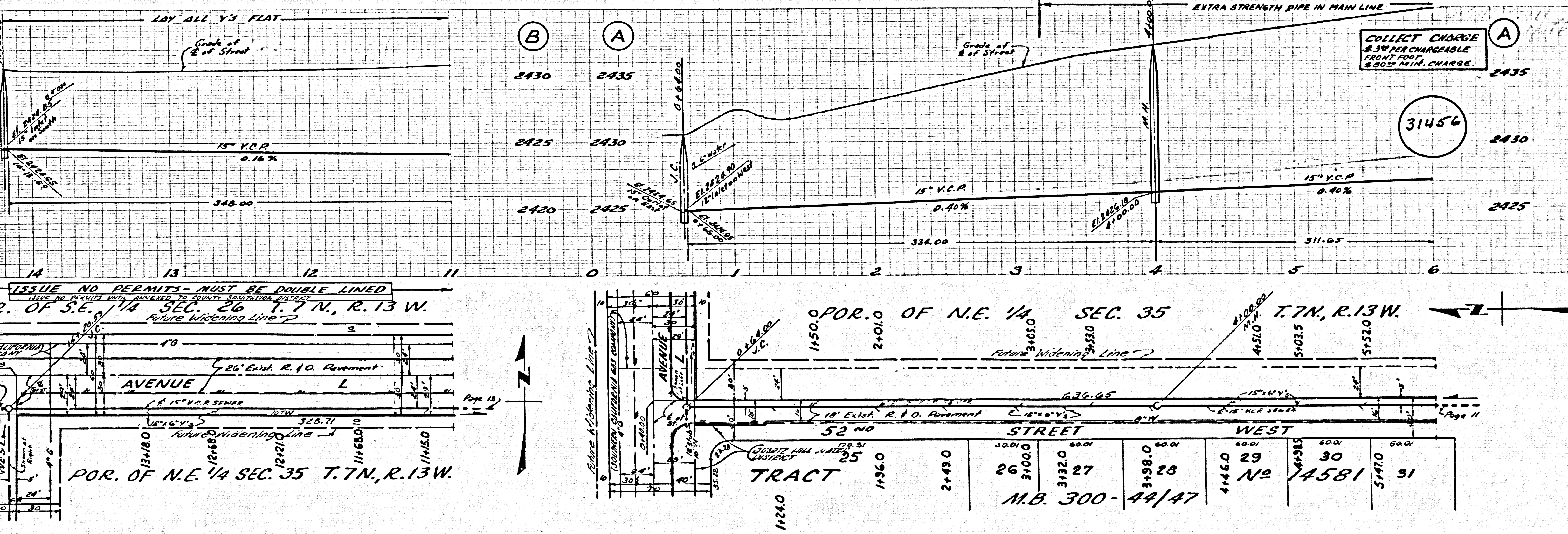


ISSUE NO PERMITS - MUST BE DOUBLE LINED
POR. OF S.E. 1/4 SEC. 26 T. 7 N., R. 13 W.
ISSUE NO PERMITS UNTIL ANNEXED TO COUNTY SANITATION DISTRICT

4" G. (COURTNEY CALIFORNIA GAS COMPANY)
26' Exist. R. & O. Pavement
AVENUE
15" V.C.P. SEWER
COURTNEY CALIFORNIA GAS COMPANY
15" V.C.P. SEWER
15" V.C.P. SEWER
EXIST. 12" V.C.P. TRUNK SEWER SAN. DIST. 14

POR. OF N.E. 1/4 SEC. 35 T. 7 N., R. 13 W.

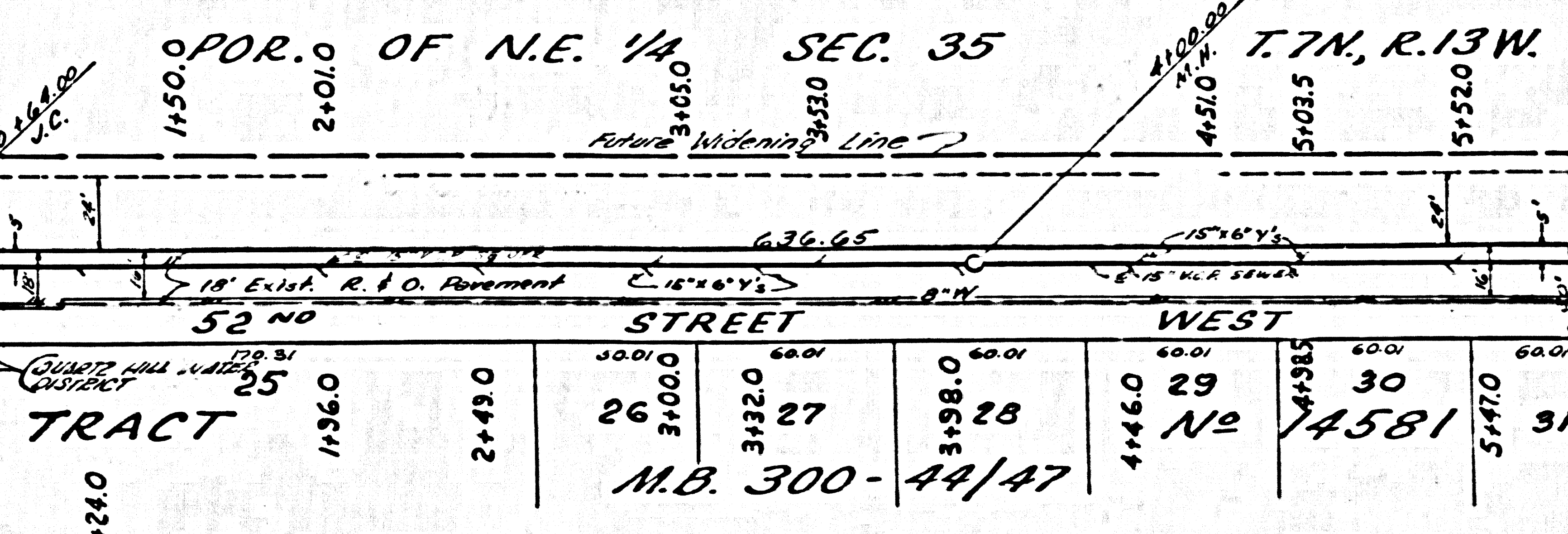
COLLECT CHARGE
\$3 PER CHARGEABLE
FRONT FOOT
\$800 MIN. CHARGE



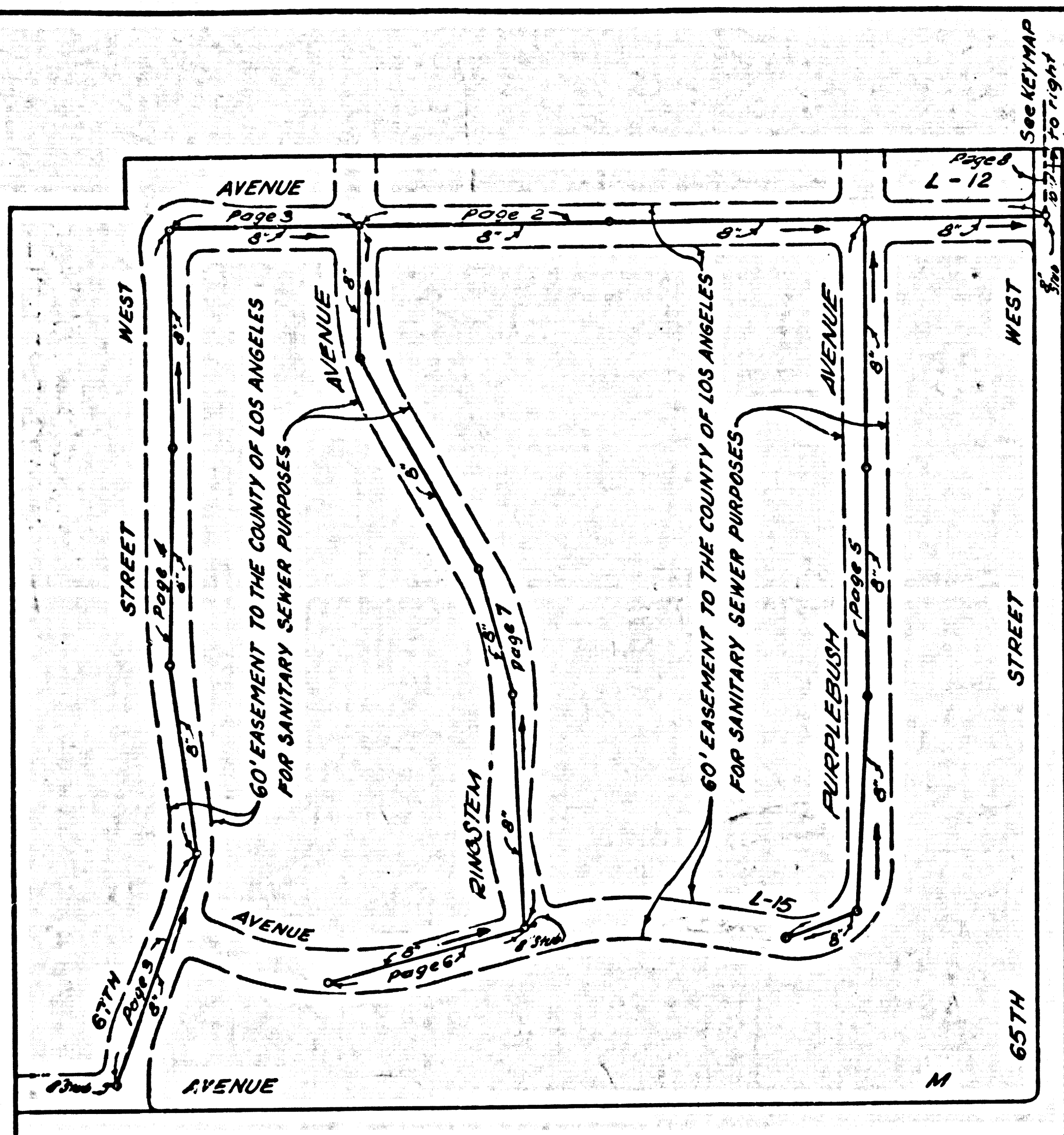
ISSUE NO PERMITS - MUST BE DOUBLE LINED
POR. OF S.E. 1/4 SEC. 26 T. 7 N., R. 13 W.
ISSUE NO PERMITS UNTIL ANNEXED TO COUNTY SANITATION DISTRICT

26' Exist. R. & O. Pavement
AVENUE
15" V.C.P. SEWER
COURTNEY CALIFORNIA GAS COMPANY
15" V.C.P. SEWER

POR. OF N.E. 1/4 SEC. 35 T. 7 N., R. 13 W.

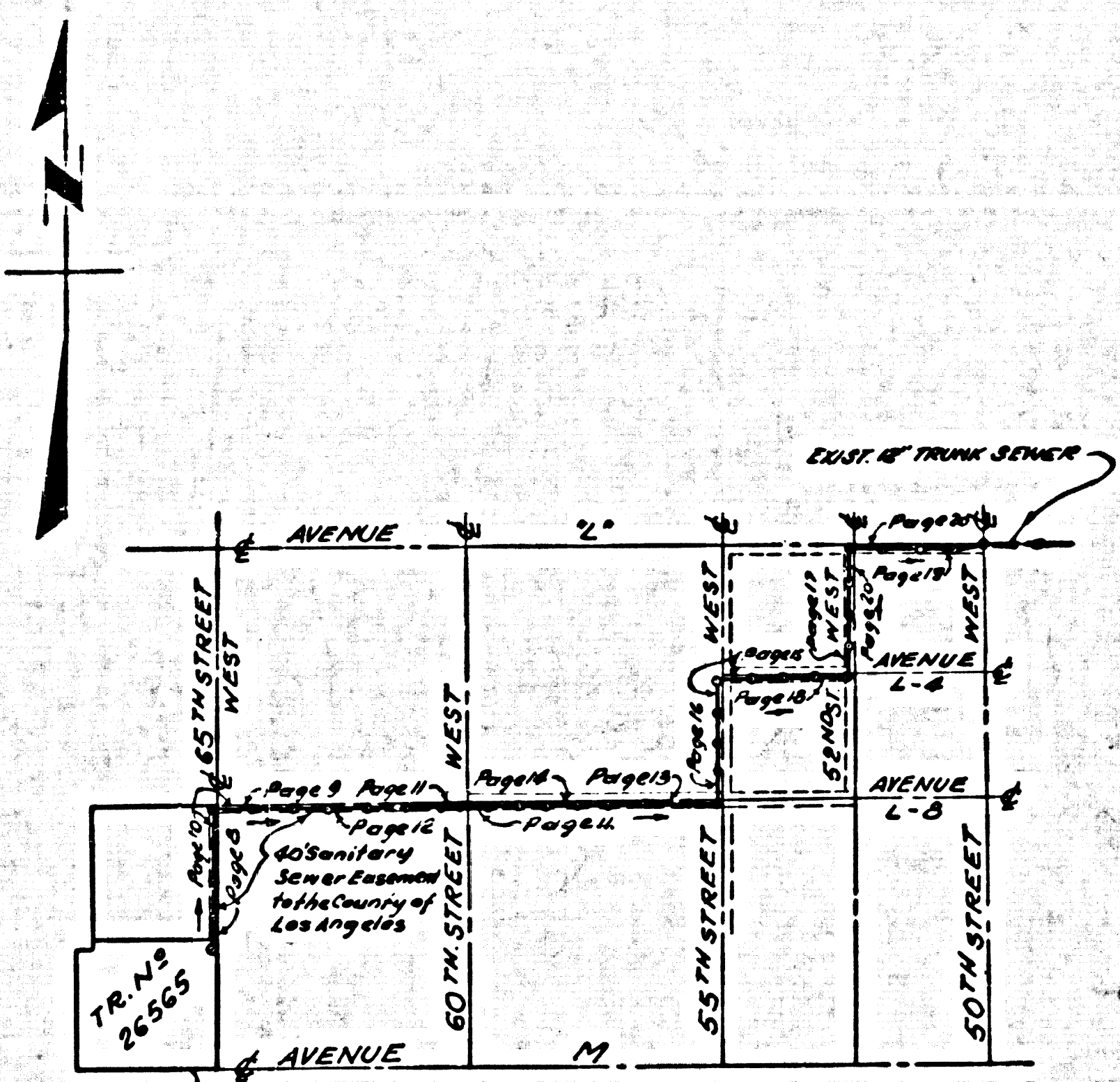


TRACT
M.B. 300-44/47



KEY MAP
SCALE: 1" = 200'
TRACT NO 26565
P.C. 5830B

BENCH MARK
S.L. 304
L.A. Co. Sur. B.C. Bench Mark set 5' above surface.
Conc. post on Ave. M + 0.5 mile west of
60th St West + 31' S of E Ave. M + 1' N of
White Witness Post marked B.M. 108-16-
1958 R.S. 5869 Baseline P.L.P.: 2566 905



KEY MAP
SCALE: 1" = 2000'
P.C. 5830

Revision Approved:
[Signature]
Use of easement Per Detail
Page 5

LANCASTER BLDG. DIST. NO. 8

- NOTES:**
- PROVIDE STAKES ON THE PROPERTY LINE OR PROPERTY LINES PRODUCED AT RIGHT ANGLES TO THE SEWER LINE AT THE CENTER LINE OF EACH MANHOLE.
 - NO REPRESENTATIVE OF THE COUNTY ENGINEER WILL SURVEY OR LAY OUT ANY PORTION OF THE WORK.
 - THE OWNER OR HIS AUTHORIZED REPRESENTATIVE SHALL FURNISH THE COUNTY ENGINEER WITH GRADE SHEETS AND STATIONING FOR ALL HOUSE LATERALS AND T BRANCHES AND SHALL PROVIDE STAKES FOR THEM AT THEIR PROPER LOCATIONS WITH STATIONING PLAINLY MARKED. ANY CHANGE IN LOCATION SHALL BE REQUESTED IN WRITING BY THE OWNER OR HIS REPRESENTATIVE.
 - THE PRIVATE ENGINEER SHALL FURNISH THE HOUSE LATERAL DEPTH AT THE PROPERTY LINE BELOW THE TOP OF CURB ELEVATION FOR EACH HOUSE LATERAL ON THE GRADE SHEET.
 - NO REVISIONS SHALL BE MADE IN THESE PLANS WITHOUT THE APPROVAL OF THE COUNTY ENGINEER.
 - USE STANDARD MANHOLE FRAMES AND COVERS, S-117.
 - USE STANDARD STRENGTH PIPE EXCEPT AS NOTED.
 - USE "WEDGE-LOCK" OR "SPEED-SEAL" FOR ALL V.C.P. JOINTS PER SPEC'S, SECS. 36 & 40.
 - RESURFACE ALL TRENCH WITHIN PAVED AREA TO MEET L.A. COUNTY ROAD DEPT. OR CALIF. STATE HIGHWAY REQUIREMENTS IN ACCORDANCE WITH PERMITS.
 - ENGAGE FOUR FEET OF SEWER AT POINTS OF INTERFERENCE WITH POLES, CASE III, S-172.
 - HOUSE LATERALS TO BE CONSTRUCTED WITH INVERTS AT PROPERTY LINE 6 FEET BELOW CURB GRADE EXCEPT AS NOTED.
 - ALL STRUCTURES SHALL BE BRICK SEWER STRUCTURES, S-104.
 - FOR ALLOWABLE LEAKAGE TEST USE FORMULA NO. 1 SPEC'S, SEC. 84.
 - MANHOLE TOPS IN UNIMPROVED RIGHTS-OF-WAY TO BE SIX INCHES ABOVE FINISHED GRADE.
 - THE CONTRACTOR SHALL NOTIFY THE CONSTRUCTION DIVISION BY TELEPHONE, MADISON 9-417, EXT. 854, AT LEAST TWENTY-FOUR HOURS BEFORE STARTING ANY WORK UNDER THIS CONTRACT.
 - STANDARD SPECIFICATIONS DATED OCTOBER 13, 1960 APPLY IN THE CONSTRUCTION OF THIS PROJECT.
 - IF THE EXISTENCE AND LOCATION OF ANY UNDERGROUND UTILITY PIPES OR STRUCTURES SHOWN ON THESE PLANS ARE OBTAINED BY A SEARCH OF THE AVAILABLE RECORDS TO THE BEST OF OUR KNOWLEDGE THERE ARE NO EXISTING UTILITIES EXCEPT AS SHOWN ON THIS MAP. THE CONTRACTOR IS REQUIRED TO TAKE PRECAUTIONARY MEASURES TO PROTECT THE UTILITY LINES SHOWN AND ANY OTHER LINES NOT OF RECORD OR NOT SHOWN ON THIS DRAWING.
- NO CONNECTIONS FOR THE DISPOSAL OF INDUSTRIAL WASTES SHALL BE MADE TO SEWERS SHOWN ON THESE DRAWINGS WITHOUT WRITTEN PERMISSION FROM THE CHIEF ENGINEER AND GENERAL MANAGER OF THE COUNTY SANITATION DISTRICTS.

COLLECT CHARGES AS INDICATED
[Signature] 7/3/61

ISSUE NO PERMITS UNTIL
OUTFALL SEWER, P.C. 5830, IS COMPLETED

PROFILE ALIGNMENT AND GRADE OF **P.C. 5830B**
SANITARY SEWERS PAGE 1
TO BE CONSTRUCTED IN JN 0355.59

TRACT No 26565
M.B. 673-25/26
PRIVATE CONTRACT NO. 5830B

W.S. 71
4 SHEETS; 7 PAGES
SCALE: VERT. 1" = 4' HORIZ. 1" = 40'
JUNE, 1961
PREPARED IN THE OFFICES OF
ROSENTHAL ENGINEERING CO.

By: *[Signature]*
REG. C. E. NO. 2905

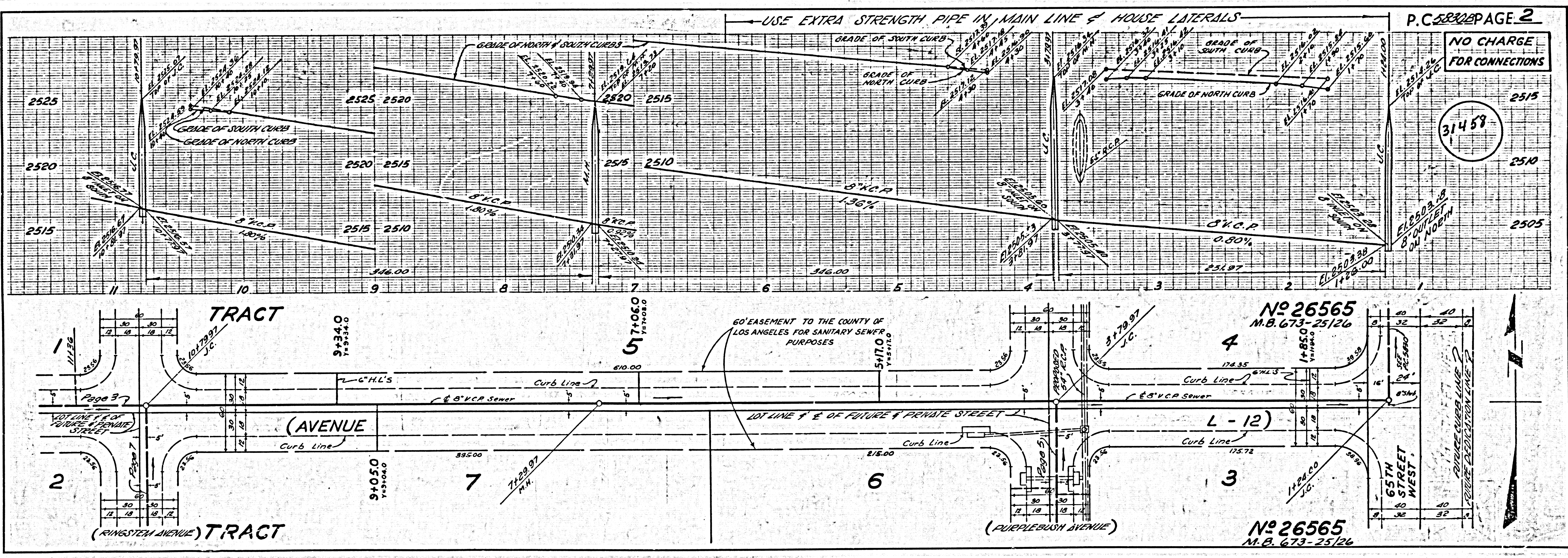
FOR LEGEND SEE PLAN NO. S-A-64

NOTE:
GRADES TO WHICH THIS IMPROVEMENT IS TO BE CONSTRUCTED ARE SHOWN ON PLANS AND PROFILE. GRADE POINTS FOR TOP OF CURBS, CENTER LINE OF STREETS OR CENTER LINE OF ALLEYS ARE SHOWN BY CIRCLES ON PROFILES AT ALL POINTS BETWEEN DESIGNATED POINTS THE GRADE SHALL BE ESTABLISHED SO AS TO CONFORM TO A STRAIGHT LINE DRAWN BETWEEN SAID DESIGNATED POINTS.
ELEVATIONS ARE IN FEET ABOVE U.S.C. & G.S. SEA LEVEL DATUM OF 1929.
THIS DRAWING AND THE DATA HEREON ARE HEREBY MADE A PART OF THE SPECIFICATIONS.
WORK SHALL BE CONSTRUCTED ACCORDING TO SPECIFICATIONS ON FILE IN THE OFFICE OF THE COUNTY ENGINEER AND SHALL BE PROSECUTED ONLY IN THE PRESENCE OF THE COUNTY ENGINEER.
BEFORE WORK CAN BE STARTED, THE CONTRACTOR MUST OBTAIN A PERMIT TO EXCAVATE IN COUNTY STREETS FROM THE L.A. COUNTY ROAD DEPT., DISTRICT OFFICE NO. 7, AND PAY A FEE TO WITH THE COUNTY ENGINEER, ROOM 310 COUNTY ENG. BLDG., 108 W. 2ND ST., SUFFICIENT TO COVER THE COST OF CONSTRUCTION INSPECTION AND RECORD PLANS.
APPROVAL OF THIS PLAN BY THE COUNTY OF LOS ANGELES DOES NOT CONSTITUTE A REPRESENTATION AS TO THE ACCURACY OF THE LOCATION OF OR THE EXISTENCE OR NON-EXISTENCE OF ANY UNDERGROUND UTILITY PIPE, OR STRUCTURE WITHIN THE LIMITS OF THIS PROJECT. THIS NOTE APPLIES TO ALL PAGES.
IF WORK IS TO BE DONE IN A STATE HIGHWAY, A PERMIT MUST BE OBTAINED FROM THE STATE OF CALIFORNIA, DIVISION OF HIGHWAYS, 128 SOUTH SPRING STREET.

COUNTY OF LOS ANGELES, CALIFORNIA

APPROVED, JOHN A. LAMBE, COUNTY ENGINEER APPROVED, C.R. CAMPBELL, CHIEF ENGINEER
CO. ENR. DIST. NO. 14
BY: *[Signature]* ASST. LIMITATION ENGINEER BY: *[Signature]* OFFICE ENGINEER
CHECKED BY: *[Signature]*
OFFICE OF COUNTY ENGINEER, REG. C. E. NO. 3416

Recommended: *[Signature]* C.E. 3627
ANTELOPE VALLEY REGIONAL OFFICE

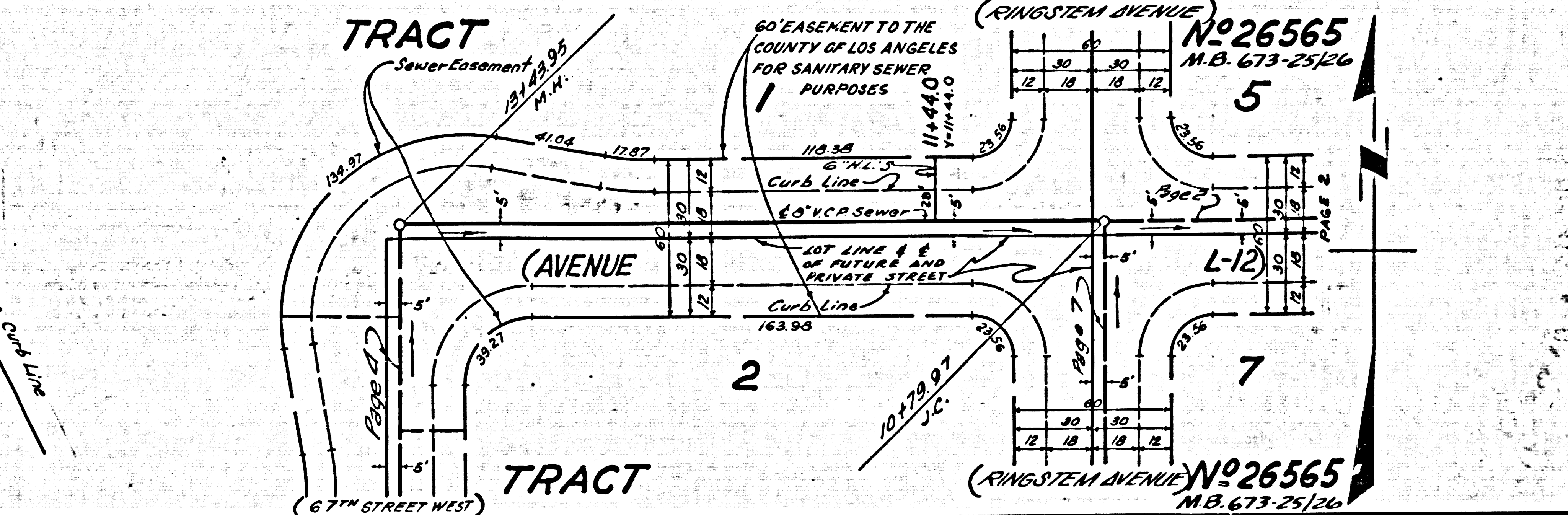
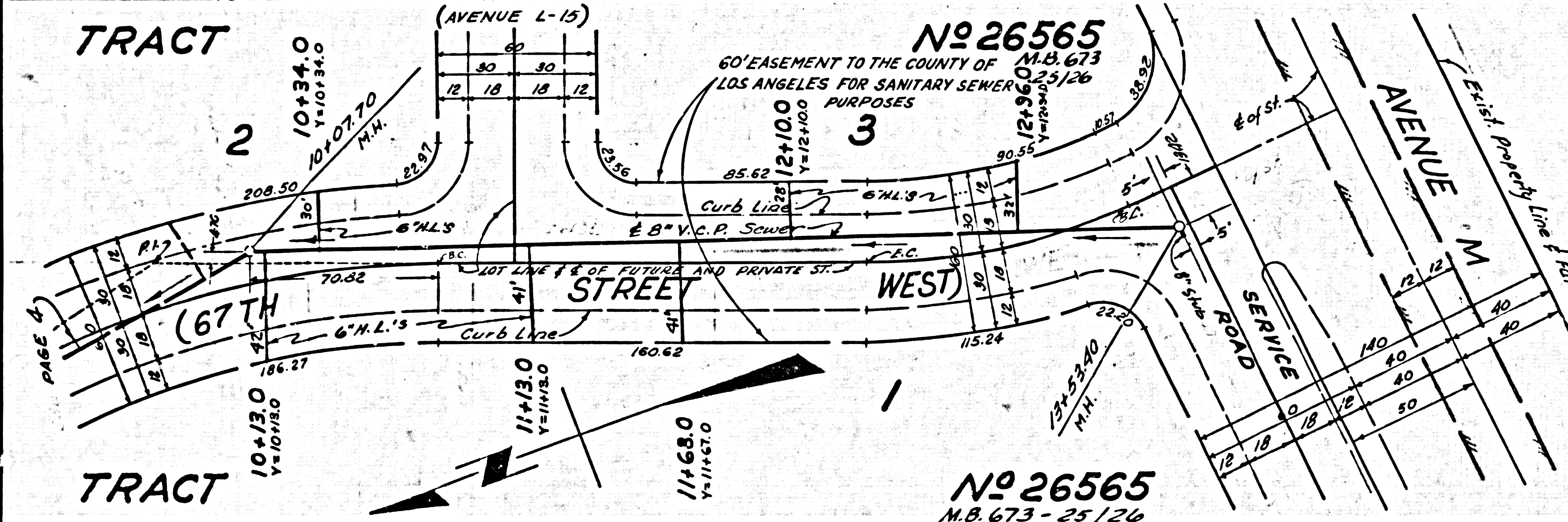
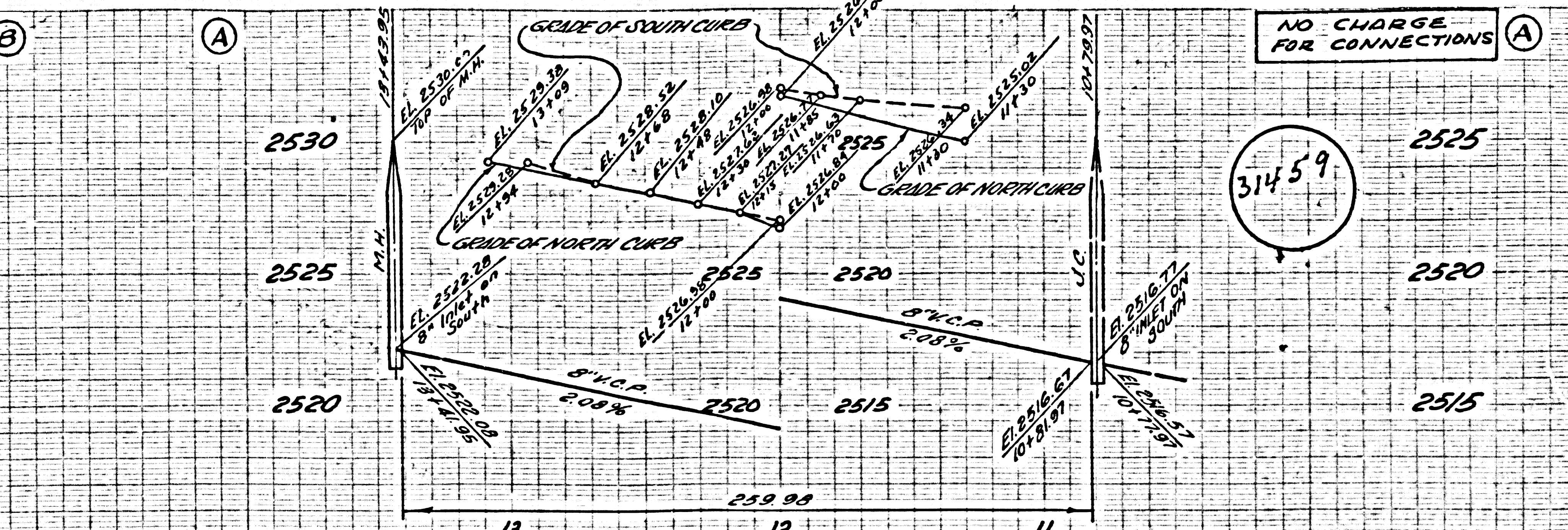
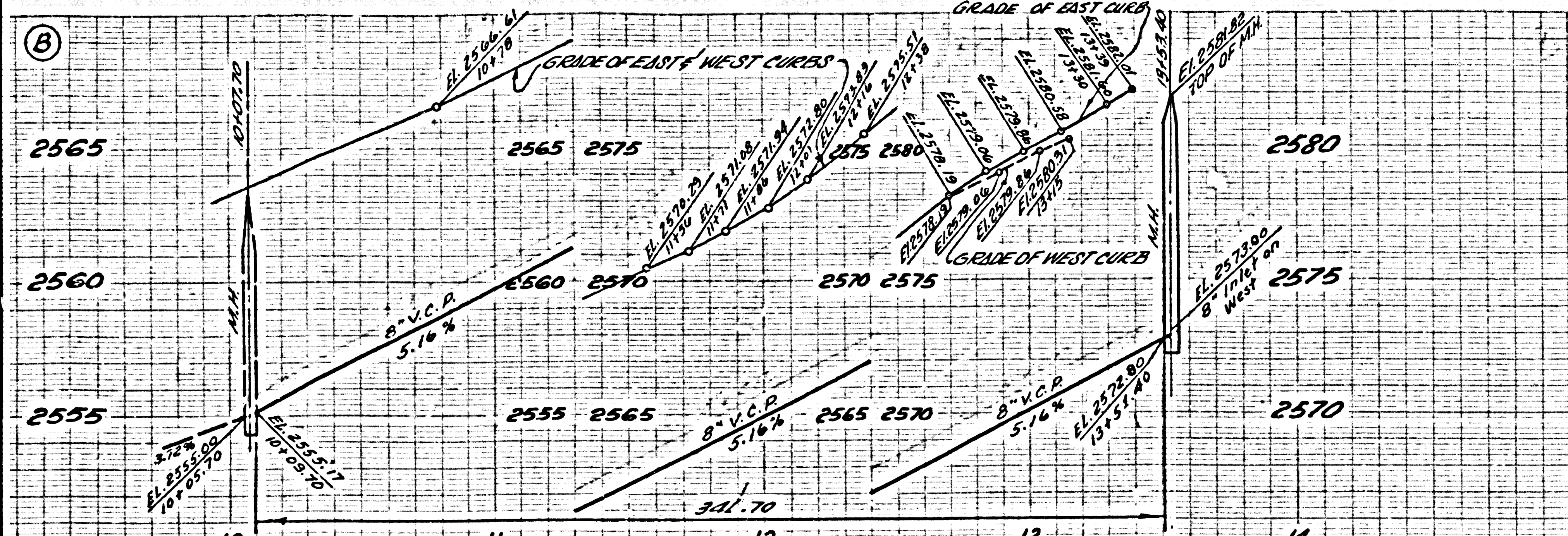


P.C. 5830B PAGE 2

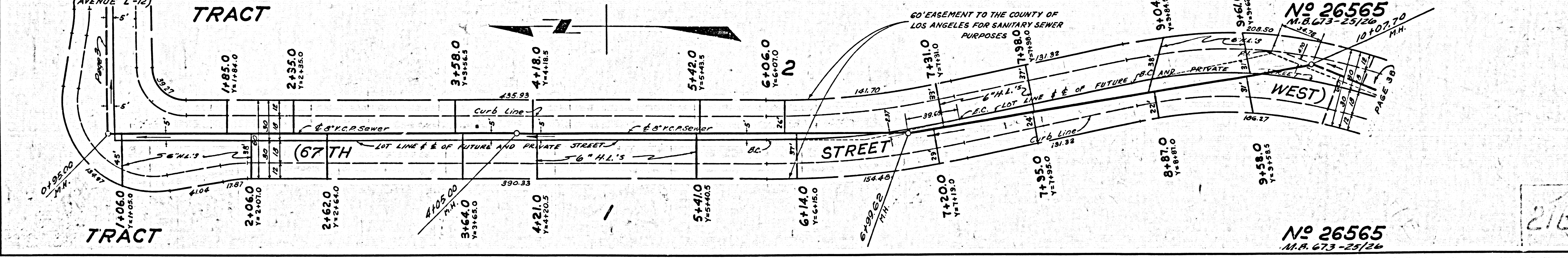
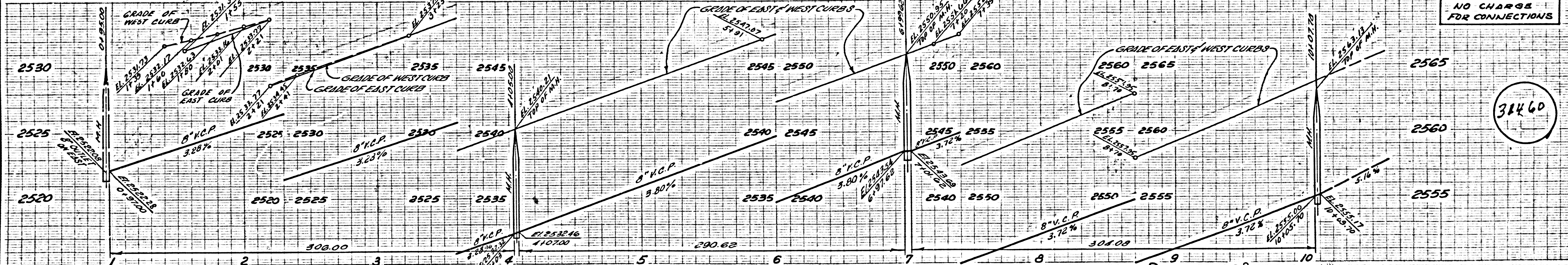
NO CHARGE FOR CONNECTIONS

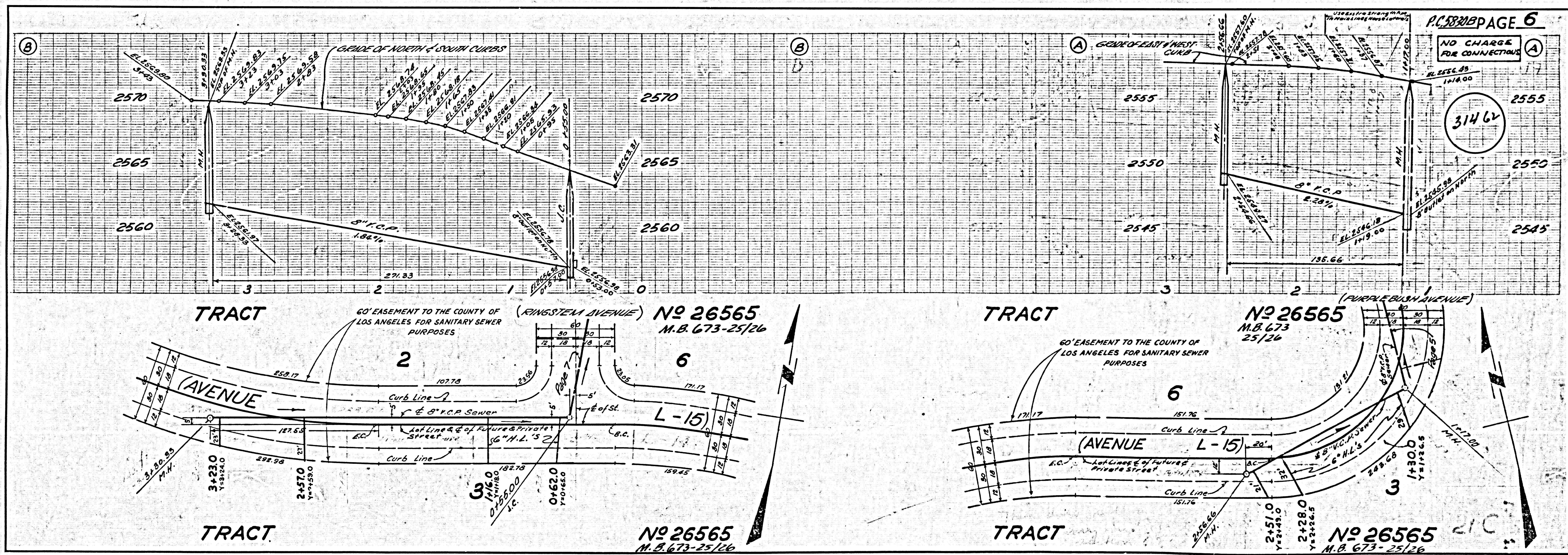
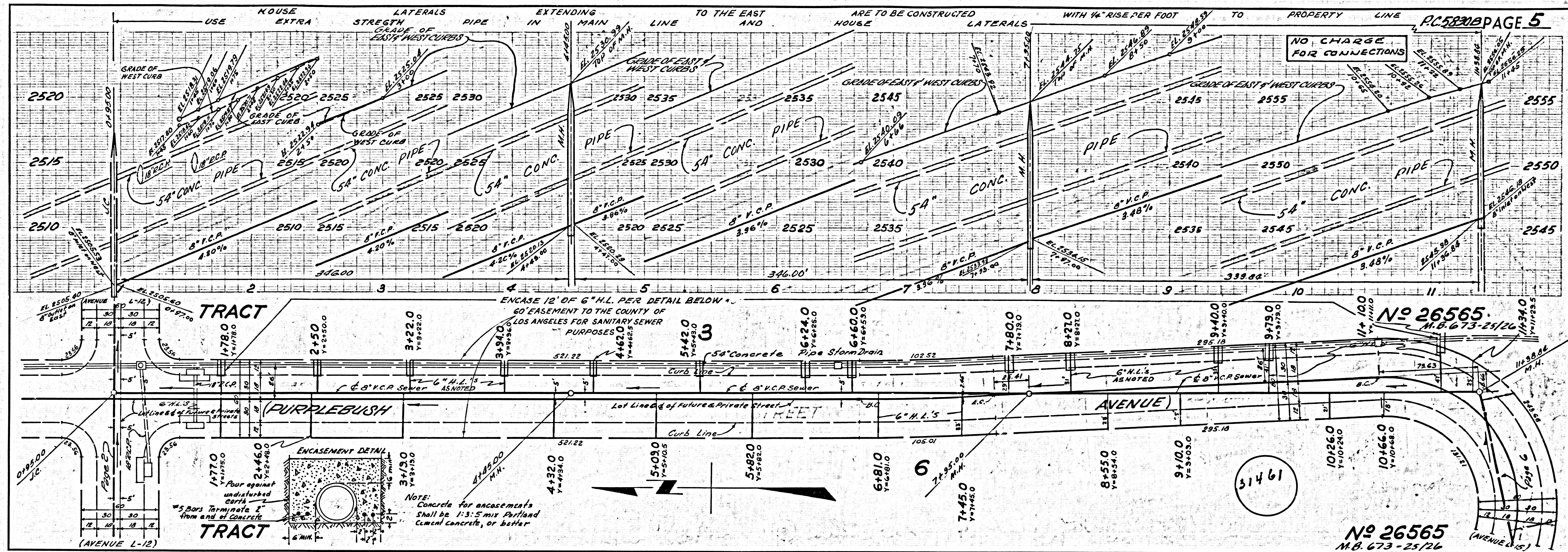
31459

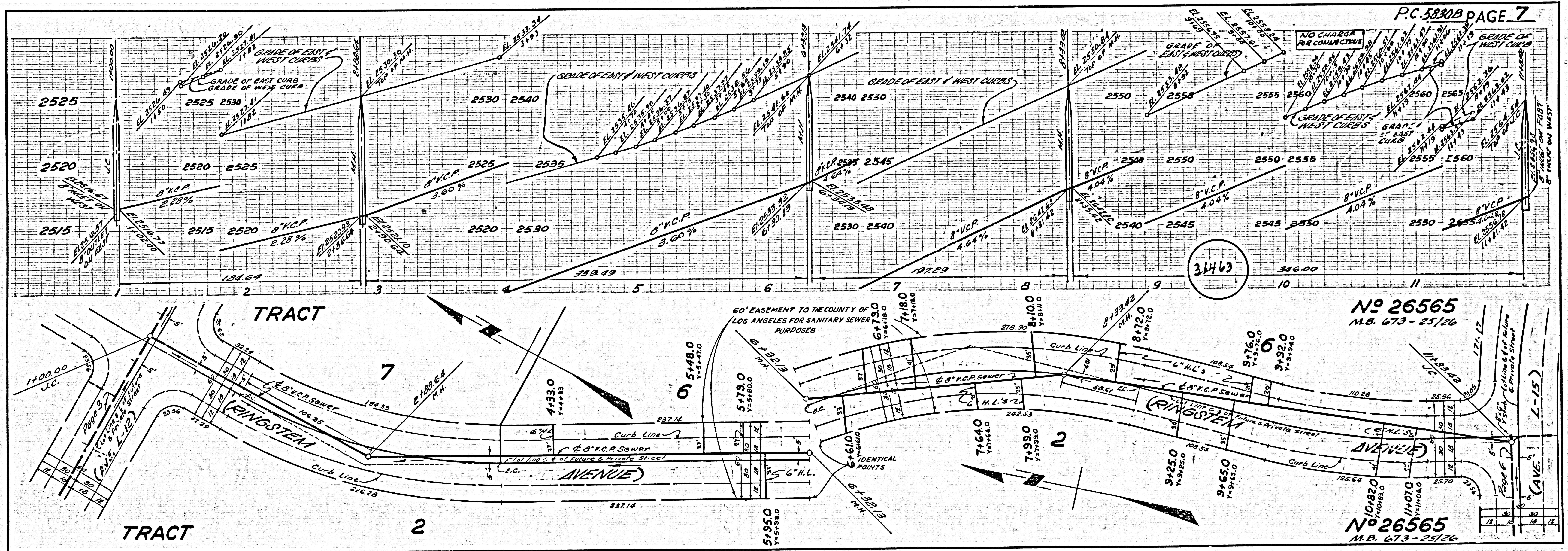
NO CHARGE FOR CONNECTIONS



NO CHARGE FOR CONNECTIONS







No 26565
M.B. 673-25/26

No 26565
M.B. 673-25/26