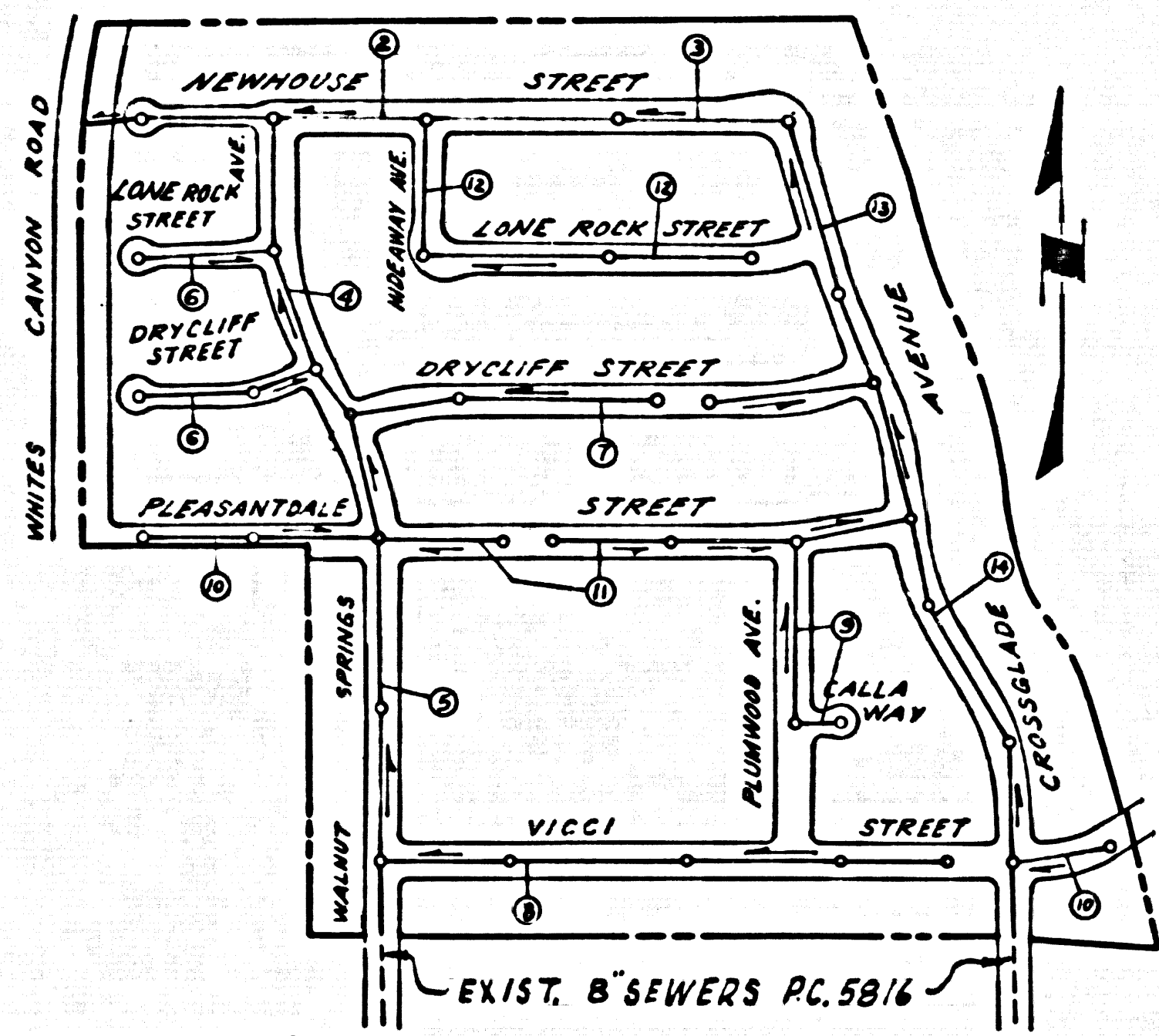


BENCH MARK

STD. USCGS BRASS DISK SET IN A CONC. MON. STAMPED D-487-1955 LOCATED ± 0.3 MILE N'LY OF INTERSECTION OF CAMP PLENTY ROAD AT SOLEDAD CANYON ROAD, AT THE INTERSECTION OF CAMP PLENTY ROAD AND A PAVED ROAD LEADING TO THE G.S. RANCH AIRPORT AT N.E. CORNER OF INTERSECTION AND NEXT TO A WHITE WITNESS POST, ROAD DEPARTMENT, ELEVATION 1344.482



NOTE: Numbers in Circles Indicate Page Numbers.

INDEX MAP
TRACT No 25925
P.C. 5835
Scale - 1"=400'

NEWHALL BLDG. DIST. NO. 82

PROFILE ALIGNMENT AND GRADE OF **P.C. 5835**
SANITARY SEWERS PAGE **1**
TO BE CONSTRUCTED IN **J.N. 0355.62**

TRACT No. 25925
M.B. 669-97
PRIVATE CONTRACT NO. 5835

W.S. 62
7 SHEETS: 14 PAGES

SCALE: VERT. 1"=4' FEBRUARY, 1961
HORIZ. 1"=40'
PREPARED IN THE OFFICES OF
McINTIRE & QUIROS, INC.

By: *Oliver M. Quiros* 3/16/61
REG. C. E. NO. 9248

FOR LEGEND SEE PLAN NO. S-A-64

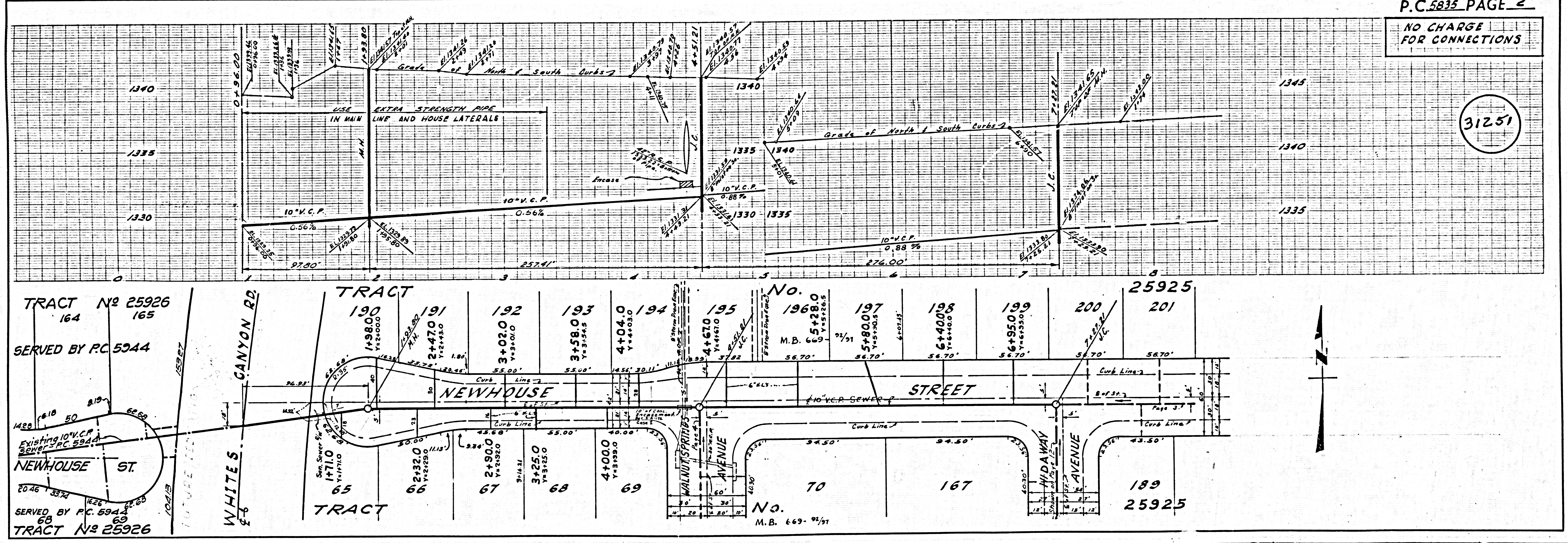
- NOTES:**
1. PROVIDE STAKES ON THE PROPERTY LINE OR PROPERTY LINES PRODUCED AT RIGHT ANGLES TO THE SEWER LINE AT THE CENTER LINE OF EACH MANHOLE.
 2. NO REPRESENTATIVE OF THE COUNTY ENGINEER WILL SURVEY OR LAY OUT ANY PORTION OF THE WORK.
 3. THE OWNER OR HIS AUTHORIZED REPRESENTATIVE SHALL FURNISH THE COUNTY ENGINEER WITH GRADE SHEETS AND STATIONING FOR ALL HOUSE LATERALS AND Y BRANCHES AND SHALL PROVIDE STAKES FOR THEM AT THEIR PROPER LOCATIONS WITH STATIONING PLAINLY MARKED. ANY CHANGE IN LOCATION SHALL BE REQUESTED IN WRITING BY THE OWNER OR HIS REPRESENTATIVE.
 4. THE PRIVATE ENGINEER SHALL FURNISH THE HOUSE LATERAL DEPTH AT THE PROPERTY LINE BELOW THE TOP OF CURB ELEVATION FOR EACH HOUSE LATERAL ON THE GRADE SHEET.
 5. NO REVISIONS SHALL BE MADE IN THESE PLANS WITHOUT THE APPROVAL OF THE COUNTY ENGINEER.
 6. USE STANDARD MANHOLE FRAMES AND COVERS, S-117.
 7. USE STANDARD STRENGTH PIPE EXCEPT AS NOTED.
 8. USE "WEDGE-LOCK" OR "SPEED-SEAL" FOR ALL V.C.P. JOINTS PER SPEC., SECS. 36 & 40.
 9. RESURFACE ALL TRENCH WITHIN PAVED AREA TO MEET L.A. COUNTY ROAD DEPT. OR CALIF. STATE HIGHWAY REQUIREMENTS IN ACCORDANCE WITH PERMITS.
 10. ENCASE FOUR FEET OF SEWER AT POINTS OF INTERFERENCE WITH POLES, OR WHEN COVER IS LESS THAN FOUR FEET, PER S-172 CASE III.
 11. HOUSE LATERALS TO BE CONSTRUCTED WITH INVERTS AT PROPERTY LINE 6 FEET BELOW CURB GRADE EXCEPT AS NOTED.
 12. ALL STRUCTURES SHALL BE BRICK SEWER STRUCTURES, S-104.
 13. FOR ALLOWABLE LEAKAGE TEST USE FORMULA NO. 1, SPEC., SEC. 54.
 14. MANHOLE TOPS IN UNIMPROVED RIGHTS-OF-WAY TO BE SIX INCHES ABOVE FINISHED GRADE.
 15. THE CONTRACTOR SHALL NOTIFY THE CONSTRUCTION DIVISION BY TELEPHONE, MADISON 8-6747, EXTENSION 81551 AT LEAST TWENTY-FOUR HOURS BEFORE STARTING ANY WORK UNDER THIS CONTRACT.
 16. THE CONTRACTOR SHALL SATISFY HIMSELF OF ALL SUBSTRUCTURES AND SHALL BE RESPONSIBLE FOR THEIR LOCATION AND MAINTENANCE.
 17. STD. SPECIFICATION DATED OCT. 10, 1960, APPLY IN CONSTRUCTION OF THIS PROJECT.

NO CHARGE FOR CONNECTIONS
NO CONNECTIONS FOR THE DISPOSAL OF INDUSTRIAL WASTES SHALL BE MADE TO SEWERS SHOWN ON THESE DRAWINGS WITHOUT WRITTEN PERMISSION FROM THE CHIEF ENGINEER AND GENERAL MANAGER OF THE COUNTY SANITATION DISTRICTS.

NO CHARGE FOR CONNECTIONS
Marian Rodas 6/16/61

NOTE:
GRADES TO WHICH THIS IMPROVEMENT IS TO BE CONSTRUCTED ARE SHOWN ON PLANS AND PROFILES. GRADE POINTS FOR TOP OF CURBS, CENTER LINE OF STREETS, OR CENTER LINE OF ALLEYS ARE SHOWN BY CIRCLES ON PROFILES. AT ALL POINTS BETWEEN DESIGNATED POINTS THE GRADE SHALL BE ESTABLISHED SO AS TO CONFORM TO A STRAIGHT LINE DRAWN BETWEEN SAID DESIGNATED POINTS.
ELEVATIONS ARE IN FEET ABOVE U.S.C. & G.S. SEA LEVEL DATUM OF 1929.
THIS DRAWING AND THE DATA HEREON ARE HEREBY MADE A PART OF THE SPECIFICATIONS.
WORK SHALL BE CONSTRUCTED ACCORDING TO SPECIFICATIONS ON FILE IN THE OFFICE OF THE COUNTY ENGINEER AND SHALL BE PROSECUTED ONLY IN THE PRESENCE OF THE COUNTY ENGINEER.
BEFORE WORK CAN BE STARTED, THE CONTRACTOR MUST OBTAIN A PERMIT TO EXCAVATE IN COUNTY STREETS FROM THE L.A. COUNTY ROAD DEPT., DISTRICT OFFICE NO. 2, AND PAY A FEE WITH THE COUNTY ENGINEER.
SUFFICIENT TO COVER THE COST OF CONSTRUCTION INSPECTION AND RECORD PLANS.
APPROVAL OF THIS PLAN BY THE COUNTY OF LOS ANGELES DOES NOT CONSTITUTE A REPRESENTATION AS TO THE ACCURACY OF THE LOCATION OR OF THE EXISTENCE OR NON-EXISTENCE OF ANY UNDERGROUND UTILITY PIPE, OR STRUCTURE WITHIN THE LIMITS OF THIS PROJECT. THIS NOTE APPLIES TO ALL PAGES.
IF WORK IS TO BE DONE IN A STATE HIGHWAY, A PERMIT MUST BE OBTAINED FROM THE STATE OF CALIFORNIA, DIVISION OF HIGHWAYS, 128 SOUTH SPRING STREET.

COUNTY OF LOS ANGELES, CALIFORNIA
APPROVED, JOHN A. LAMBIE, COUNTY ENGINEER
APPROVED, C. R. COMPTON, CHIEF ENGINEER
CO. SAN. DIST. NO. 26
BY: *C. E. Lambie* ASST. SANITATION ENGINEER
BY: *C. R. Compton* OFFICE ENGINEER
CHECKED BY: *R. K. Onda*
OFFICE OF COUNTY ENGINEER, REG. C. E. NO. 9446
RECOMMENDED *H. M. Dick 6/16/61*
ANTELOPE VALLEY REGIONAL ENGINEER

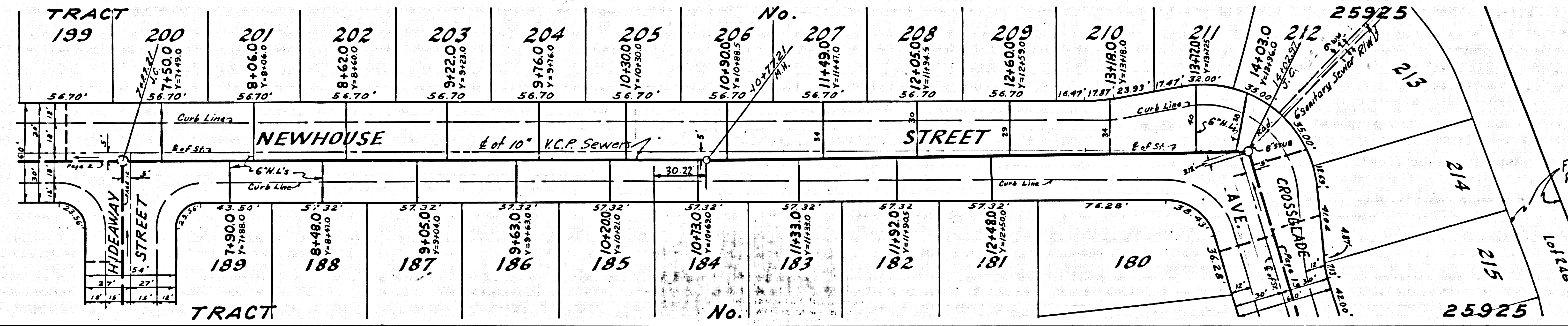
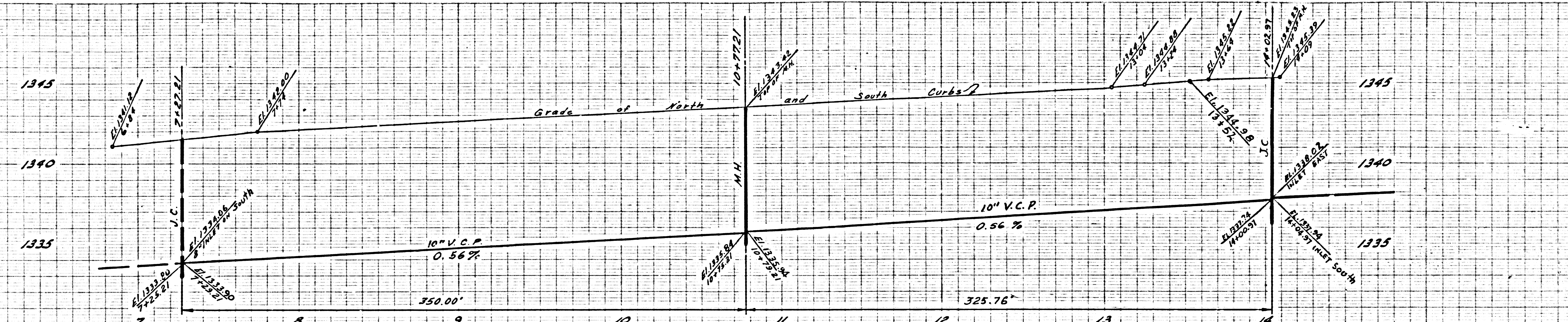


P.C. 5835 PAGE 2
NO CHARGE FOR CONNECTIONS

31251

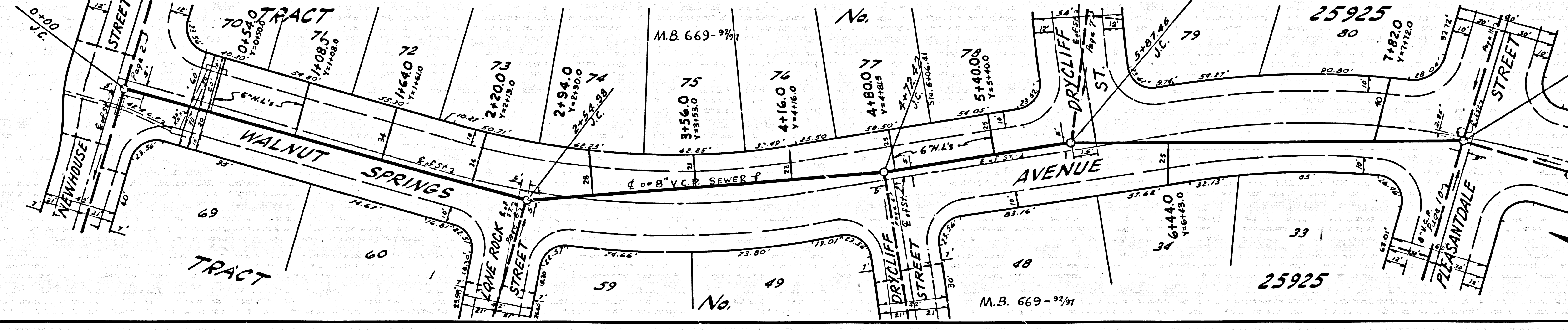
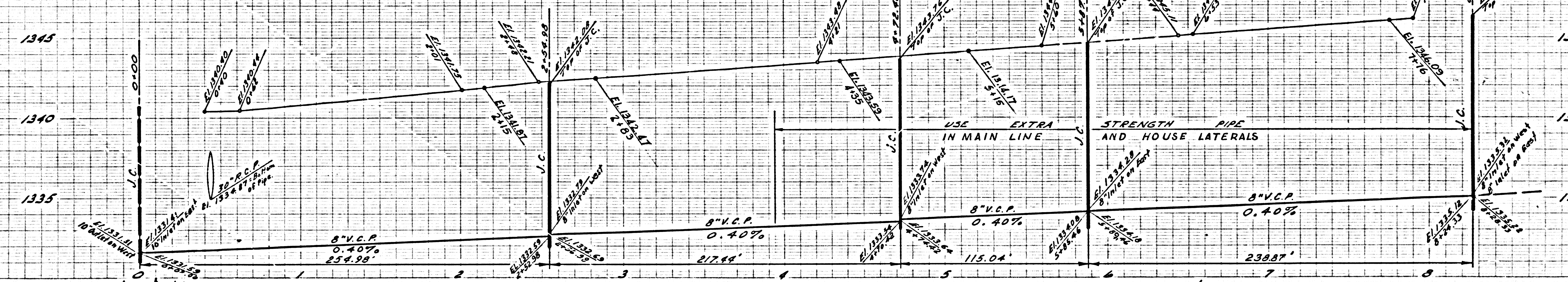
NO CHARGE FOR CONNECTIONS

31252



NO CHARGE FOR CONNECTIONS

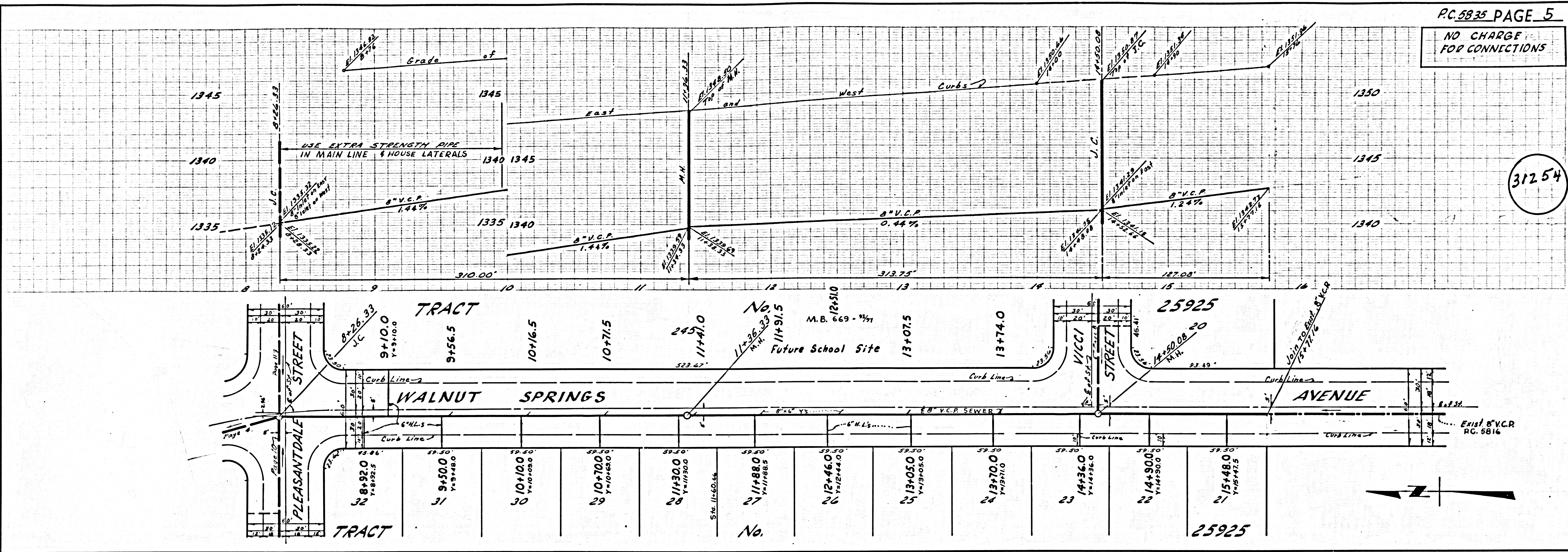
31253



5-11-2007

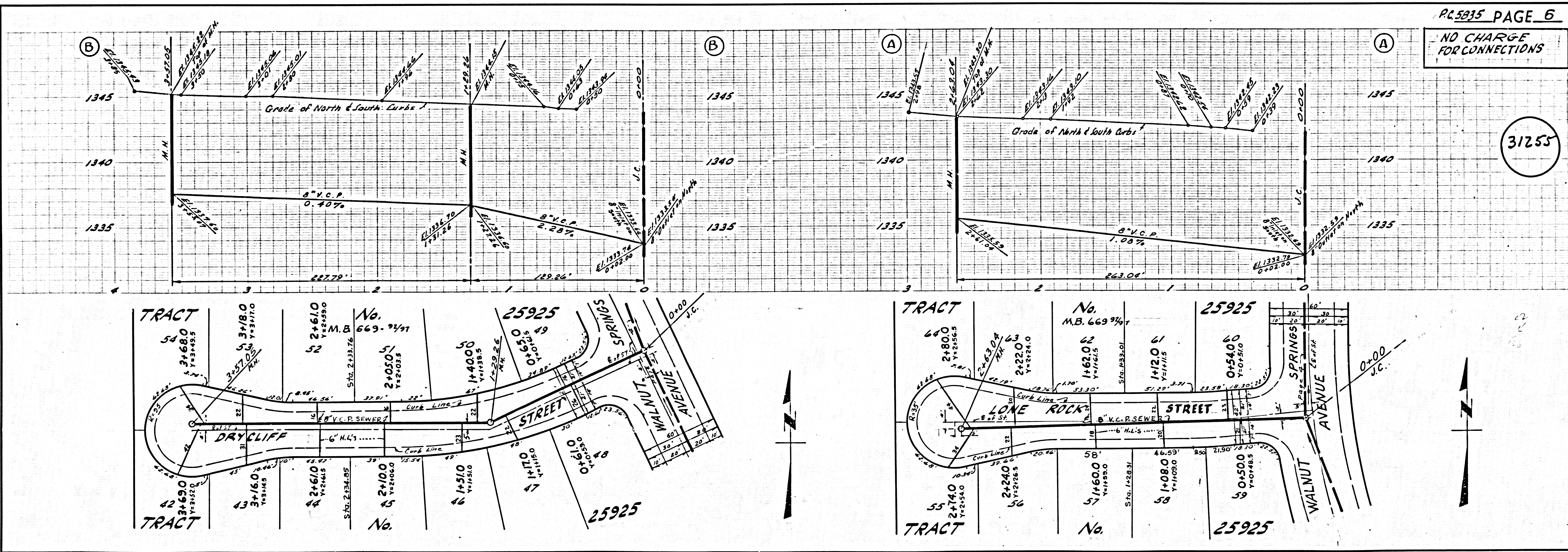
NO CHARGE FOR CONNECTIONS

31254



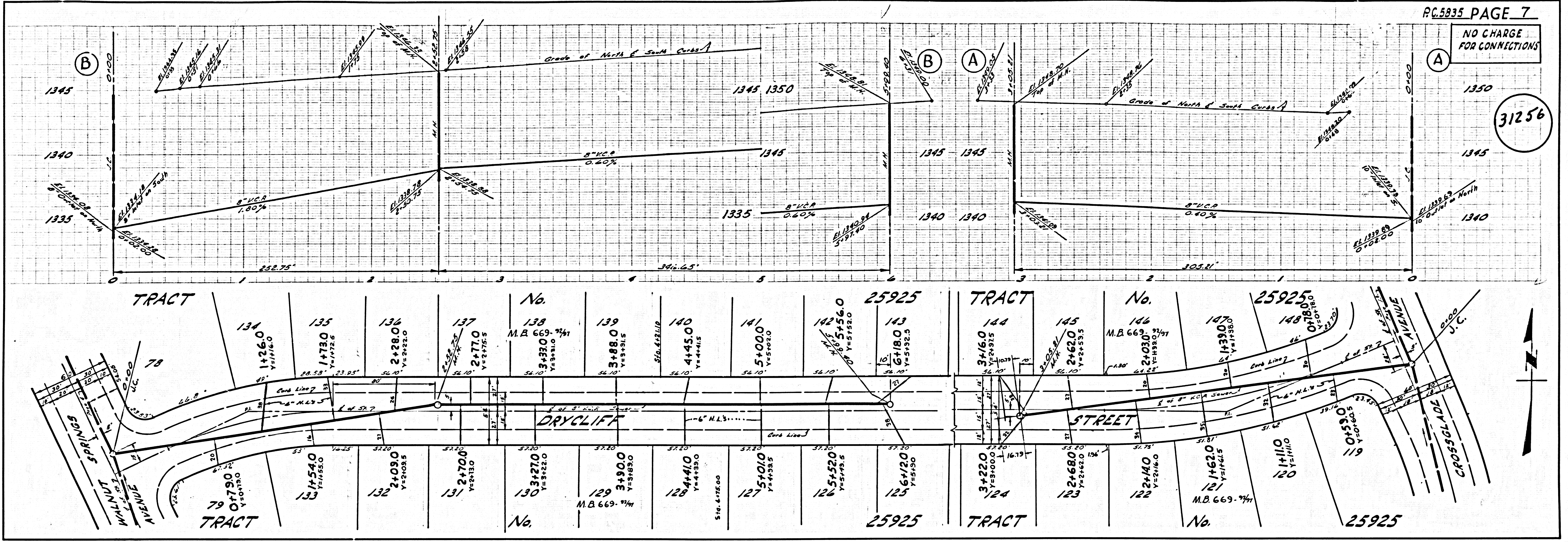
NO CHARGE FOR CONNECTIONS

31255



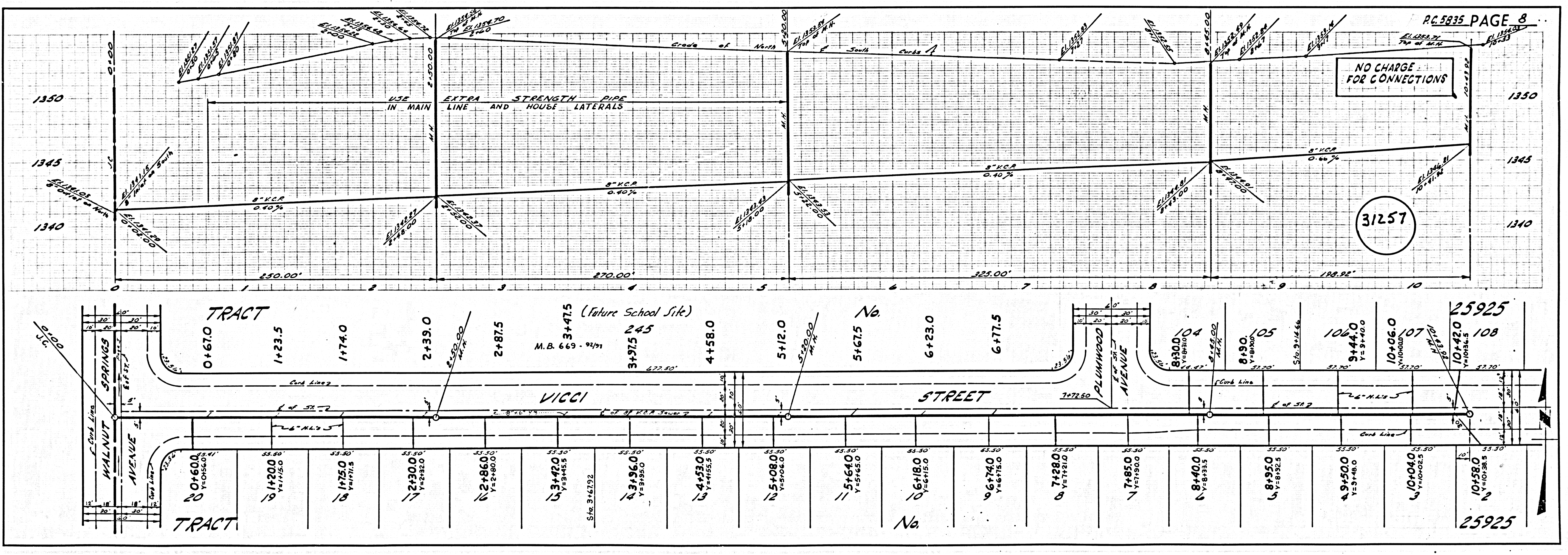
NO CHARGE FOR CONNECTIONS

31256



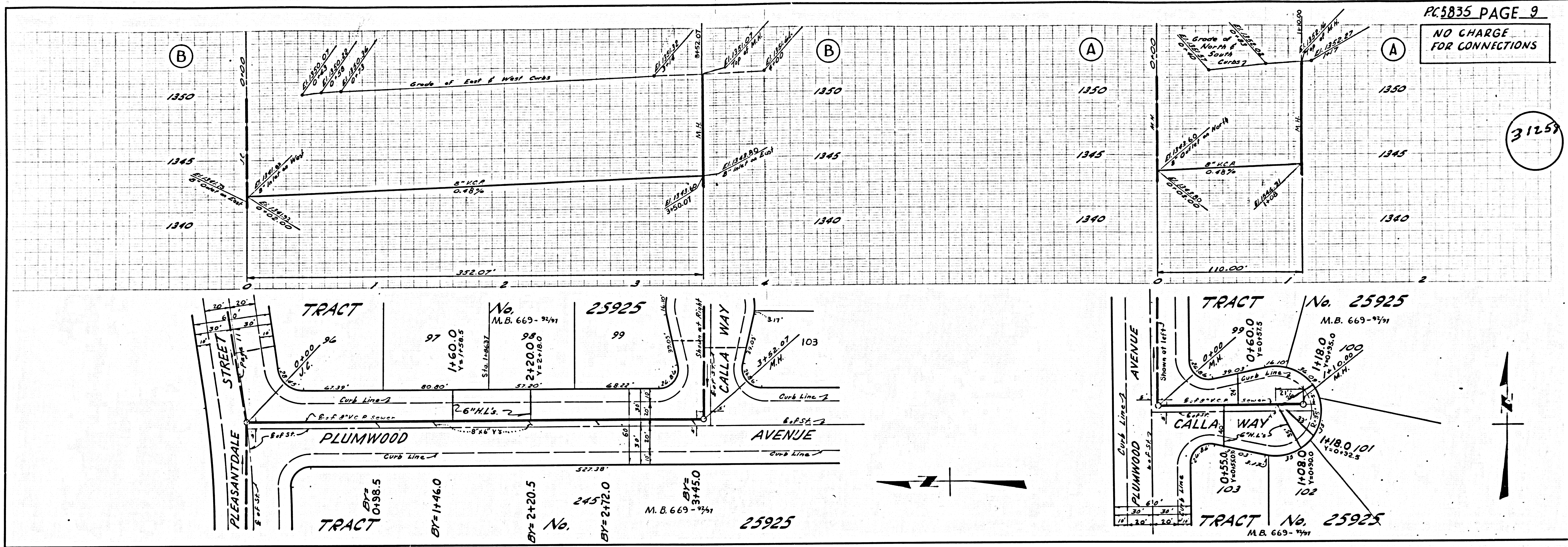
NO CHARGE FOR CONNECTIONS

31257



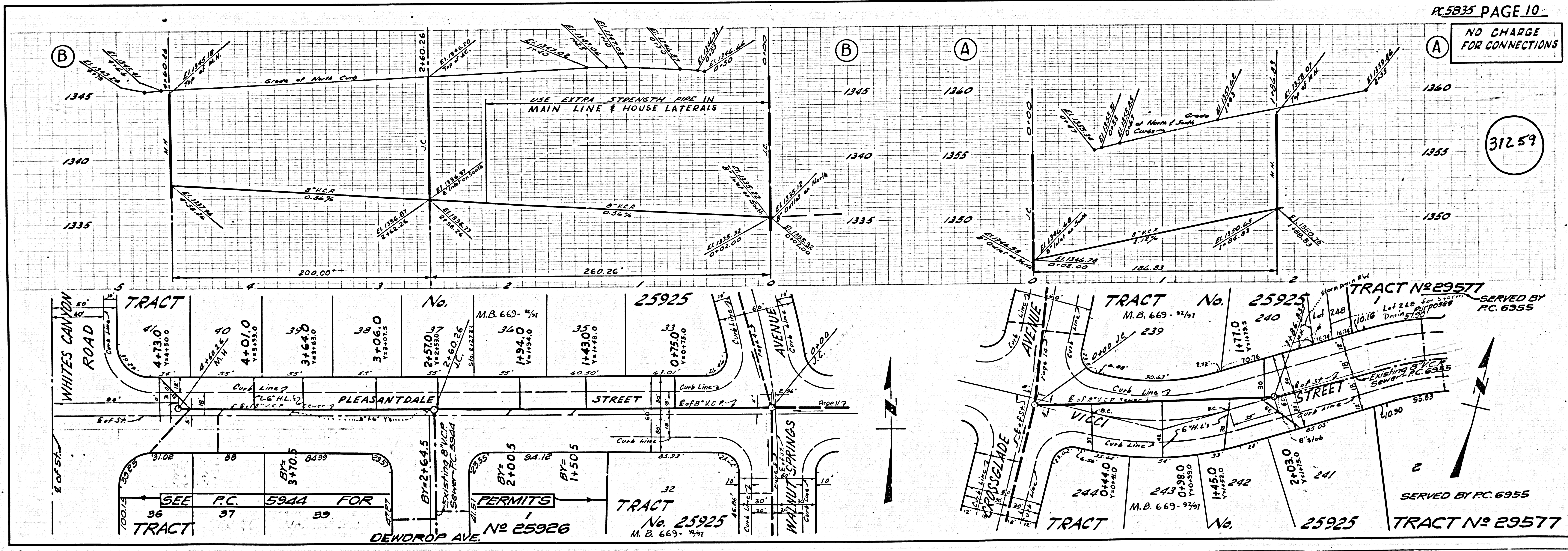
NO CHARGE FOR CONNECTIONS

31257

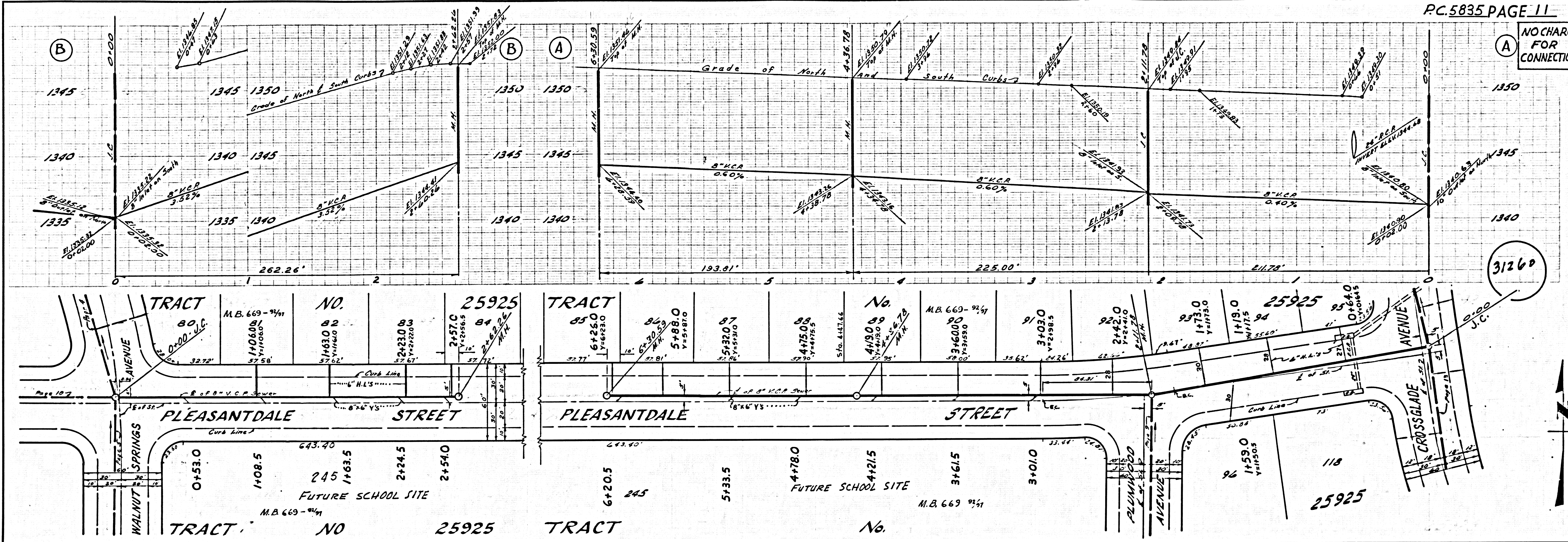


NO CHARGE FOR CONNECTIONS

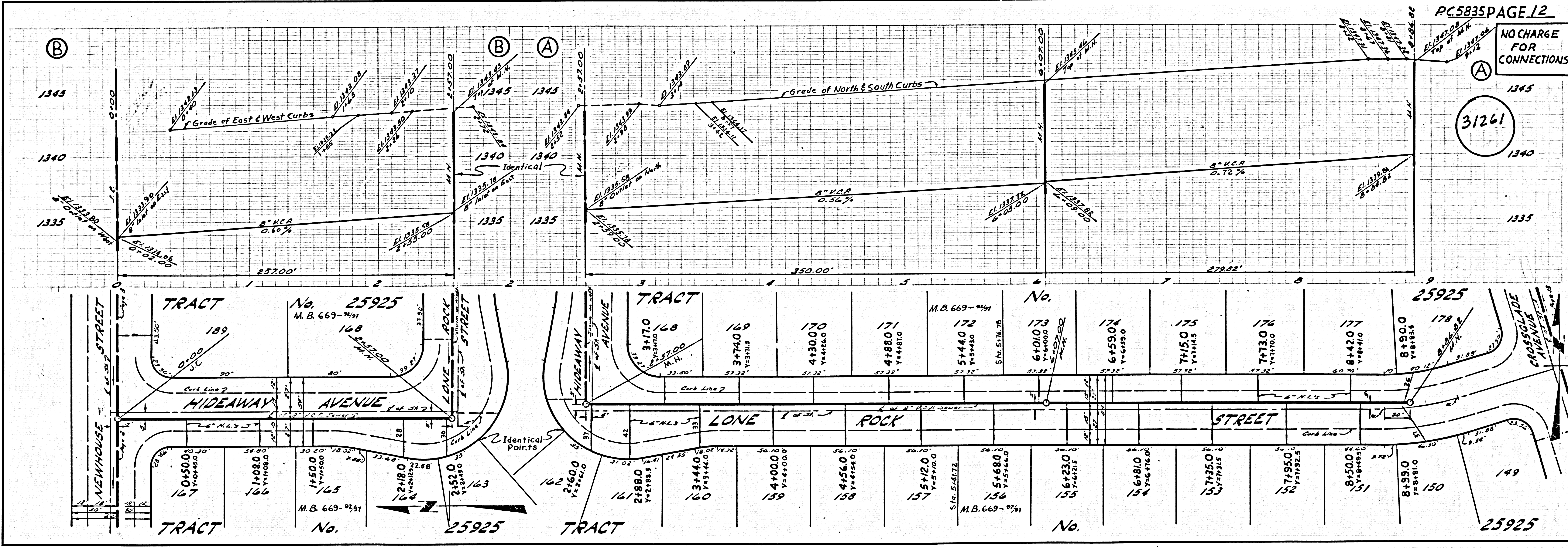
31259



NO CHARGE FOR CONNECTIONS

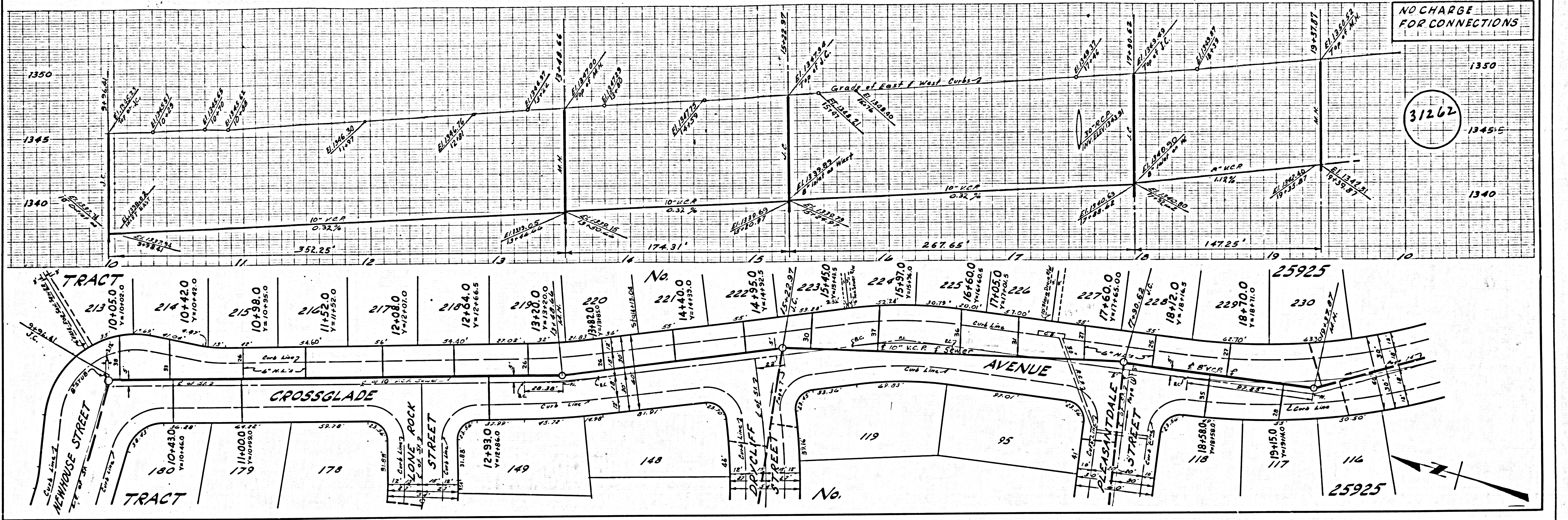


NO CHARGE FOR CONNECTIONS



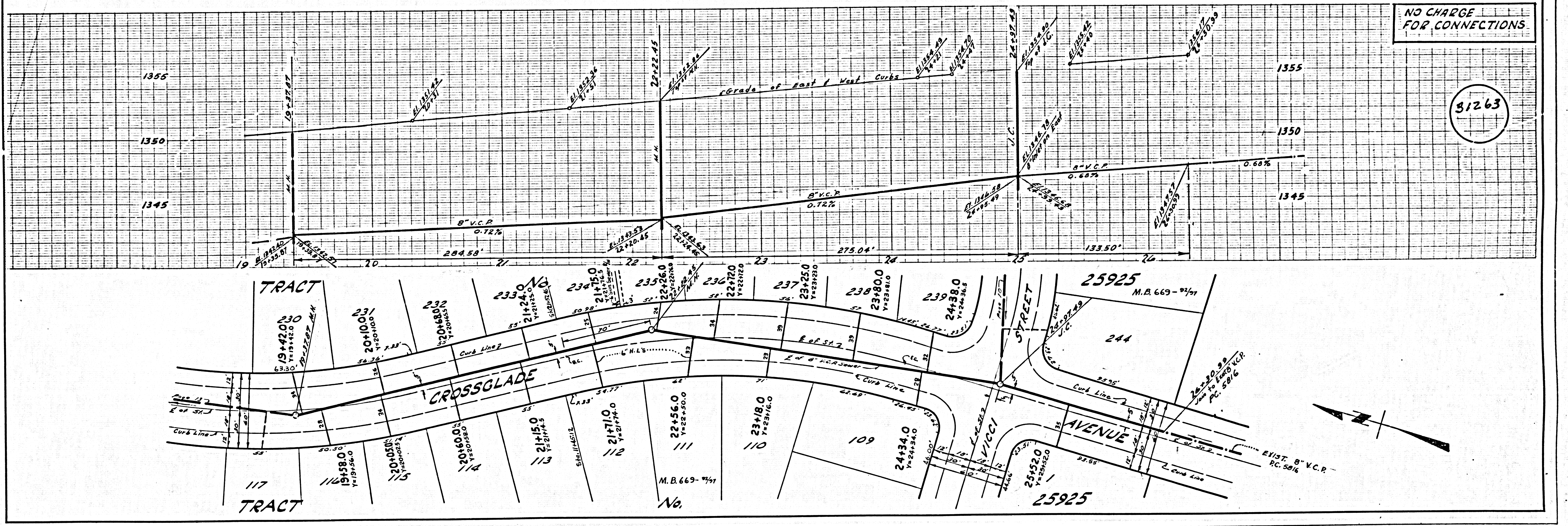
NO CHARGE FOR CONNECTIONS

31262



NO CHARGE FOR CONNECTIONS

31263



PC 2820