

INDEX MAP
SCALE 1"=300
P.C. 5837

SAN DIMAS BLDG. DIST. NO. 10

B.M. S.G. 50-A ELEV. 710.670
BONNIE COVE AND COVINA AVE. NE COR.
TRIANGULATION DISK, in Conc. Post
± 39' E. & ± 20' N. of E Intersection

- NOTES:
1. PROVIDE STAKES ON THE PROPERTY LINE OR PROPERTY LINES PRODUCED AT RIGHT ANGLES TO THE SEWER LINE AT THE CENTER LINE OF EACH MANHOLE.
 2. NO REPRESENTATIVE OF THE COUNTY ENGINEER WILL SURVEY OR LAY OUT ANY PORTION OF THE WORK.
 3. THE OWNER OR HIS AUTHORIZED REPRESENTATIVE SHALL FURNISH THE COUNTY ENGINEER WITH GRADE SHEETS AND STATIONING FOR ALL HOUSE LATERALS AND Y BRANCHES AND SHALL PROVIDE STAKES FOR THEM AT THEIR PROPER LOCATIONS WITH STATIONING PLAINLY MARKED. ANY CHANGE IN LOCATION SHALL BE REQUESTED IN WRITING BY THE OWNER OR HIS REPRESENTATIVE.
 4. THE COUNTY ENGINEER SHALL FURNISH THE HOUSE LATERAL DEPTH AT THE PROPERTY LINE BELOW THE TOP OF CURB.
 5. THE LOCATION FOR EACH HOUSE LATERAL SHALL BE SHOWN ON THE PLANS.
 6. NO REVISIONS SHALL BE MADE IN THESE PLANS WITHOUT THE APPROVAL OF THE COUNTY ENGINEER.
 7. USE STANDARD MANHOLE FRAMES AND COVERS, S-117.
 8. USE STANDARD STRENGTH PIPE.
 9. USE CEMENT MORTAR OR "WEDGE-LOCK" OR "SPEED-SEAL" FOR ALL V.C.P. JOINTS PER SPECS. SECS. 36 & 46.
 10. RESURFACE ALL TRENCH WITHIN PAVED AREA TO MEET L.A. COUNTY ROAD DEPT. OR CALIF. STATE HIGHWAY REQUIREMENTS IN ACCORDANCE WITH PERMITS.
 11. ENCASE FOUR FEET OF SEWER AT POINTS OF INTERFERENCE WITH POLES, CASE III, S-172.
 12. HOUSE LATERALS TO BE CONSTRUCTED WITH INVERTS AT PROPERTY LINE. FEET BELOW CURB FRAME EXCEPT AS NOTED.
 13. ALL STRUCTURES SHALL BE BRICK SEWER STRUCTURES, S-104.
 14. FOR ALLOWABLE LEAKAGE TEST USE FORMULA NO. 1, SPECS. SEC. 54.
 15. MANHOLE TOPS IN UNIMPROVED RIGHTS-OF-WAY TO BE SIX INCHES ABOVE FINISHED GRADE.
 16. THE CONTRACTOR SHALL NOTIFY THE CONSTRUCTION DIVISION BY TELEPHONE, MADISON 8-4147, EXT. 8451, AT LEAST TWENTY-FOUR HOURS BEFORE STARTING ANY WORK UNDER THIS CONTRACT.
 17. STANDARD SPECIFICATIONS DATED OCT. 10, 1960 APPLY IN THE CONSTRUCTION ON THIS PROJECT.

COLLECT CHARGE
AS INDICATED
7/7/61

ISSUE NO PERMITS UNTIL
OUTLET SEWER - P.C. 5764
IS ACCEPTED.

NO CONNECTIONS FOR THE DISPOSAL OF INDUSTRIAL WASTES SHALL BE MADE TO SEWERS SHOWN ON THESE DRAWINGS WITHOUT WRITTEN PERMISSION FROM THE CHIEF ENGINEER AND GENERAL MANAGER OF THE COUNTY SANITATION DISTRICTS.

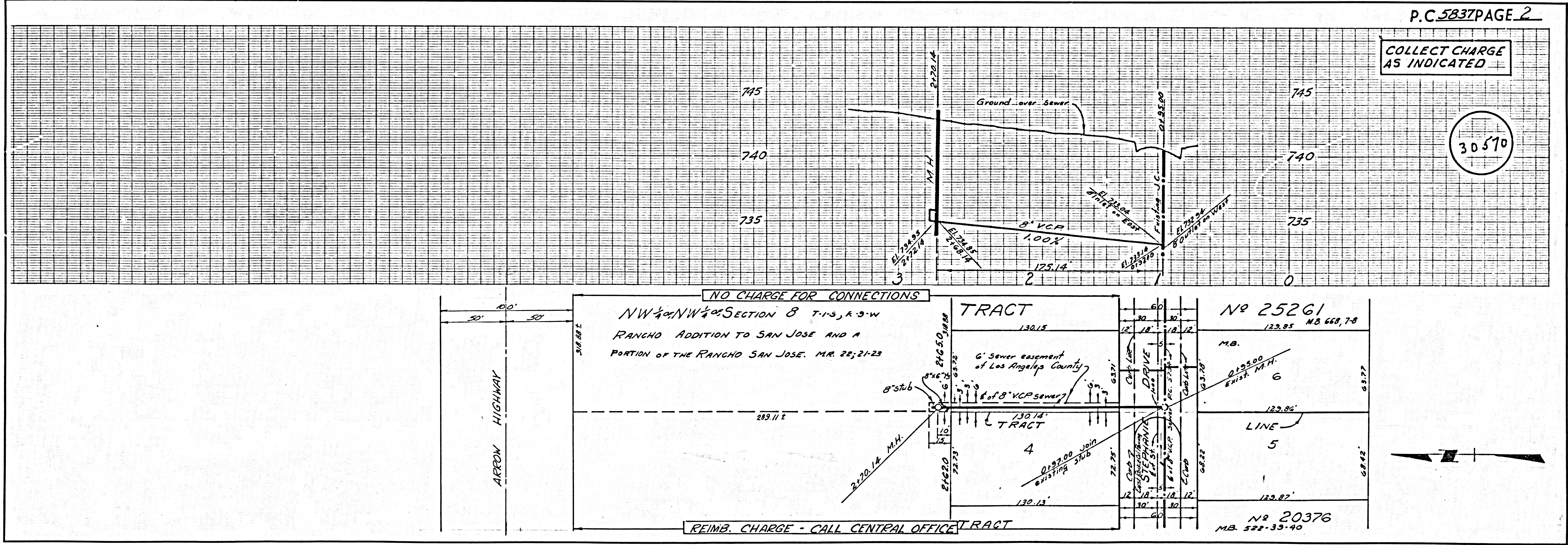
PROFILE ALIGNMENT AND GRADE OF P.C. 5837
SANITARY SEWERS PAGE 1
TO BE CONSTRUCTED IN J.N. 0355.64
SANITARY SEWER EASEMENT
NORTH OF STEPHANIE DRIVE

PRIVATE CONTRACT NO. 5837
W.S. 48
1 SHEET : 2 PAGES
SCALE: VERT. 1"=4' HORIZ. 1"=40'
MARCH, 1961
PREPARED IN THE OFFICES OF
TREADWELL ENGINEERING CORPORATION
BY: W.G. Treadwell REG. C. E. NO. 410
FOR LEGEND SEE PLAN NO. S-A-64

NOTE:
GRADES TO WHICH THIS IMPROVEMENT IS TO BE CONSTRUCTED ARE SHOWN ON PLANS AND PROFILES. GRADE POINTS FOR TOP OF CURBS, CENTER LINES OF STREETS OR CENTER LINE OF ALLEYS ARE SHOWN BY CIRCLES ON PROFILES. AT ALL POINTS BETWEEN DESIGNATED POINTS THE GRADE SHALL BE ESTABLISHED SO AS TO CONFORM TO A STRAIGHT LINE DRAWN BETWEEN SAID DESIGNATED POINTS.
ELEVATIONS ARE IN FEET ABOVE U.S.C. & G.S. SEA LEVEL DATUM OF 1929.
THIS DRAWING AND THE DATA HEREON ARE HEREBY MADE A PART OF THE SPECIFICATIONS. WORK SHALL BE CONSTRUCTED ACCORDING TO SPECIFICATIONS ON FILE IN THE OFFICE OF THE COUNTY ENGINEER AND SHALL BE PROSECUTED ONLY IN THE PRESENCE OF THE COUNTY ENGINEER.
BEFORE WORK CAN BE STARTED THE CONTRACTOR MUST OBTAIN A PERMIT TO EXCAVATE IN COUNTY STREETS FROM THE L.A. COUNTY ROAD DEPT., DISTRICT OFFICE NO. 4422 PAY PER FEET TO COUNTY ENGINEER, ROOM 310 L.A. CO. BLDG. 108 W. 2ND ST., L.A. SUFFICIENT TO COVER THE COST OF CONSTRUCTION INSPECTION AND RECORD PLANS.
APPROVAL OF THIS PLAN BY THE COUNTY OF LOS ANGELES DOES NOT CONSTITUTE A REPRESENTATION AS TO THE ACCURACY OF THE LOCATION OF OR THE EXISTENCE OR NON-EXISTENCE OF ANY UNDERGROUND UTILITY PIPE, OR STRUCTURE WITHIN THE LIMITS OF THIS PROJECT. THIS NOTE APPLIES TO ALL PAGES.
IF WORK IS TO BE DONE IN A STATE HIGHWAY, A PERMIT MUST BE OBTAINED FROM THE STATE OF CALIFORNIA, DIVISION OF HIGHWAYS, 126 SOUTH SPRING STREET.

COUNTY OF LOS ANGELES, CALIFORNIA
APPROVED, JOHN A. LAMBIE, COUNTY ENGINEER APPROVED, G. COMPTON, CHIEF ENGINEER
CO. SAN. DIST. NO. 22
BY: E.E. Smith, SANITATION ENGINEER BY: J. Matthews, OFFICE ENGINEER
CHECKED BY: J.K. White, 4-12-61
OFFICE OF COUNTY ENGINEER, REG. C. E. NO. 3456

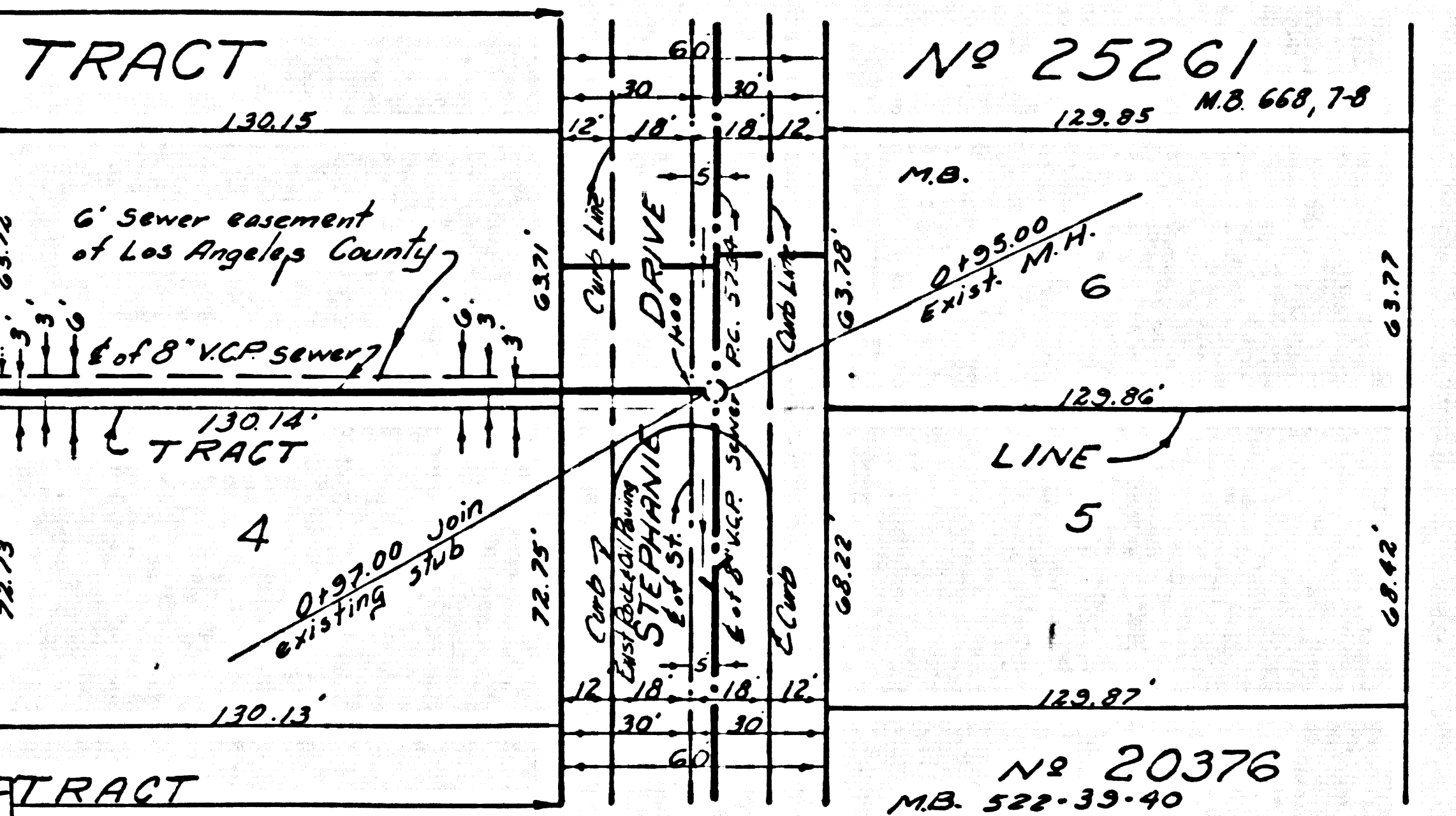
SUBMITTED: W.C. Paine, 4-11-61
SAN DIMAS REGIONAL ENGINEER



COLLECT CHARGE
AS INDICATED

30570

NO CHARGE FOR CONNECTIONS
NW 1/4 of NW 1/4 of SECTION 8 T-1-S, R-9-W
RANCHO ADDITION TO SAN JOSE AND A
PORTION OF THE RANCHO SAN JOSE. MR. 22-21-23



REIMB. CHARGE - CALL CENTRAL OFFICE

J.N.