

SAN DIMAS BLDG. DIST. NO. 10

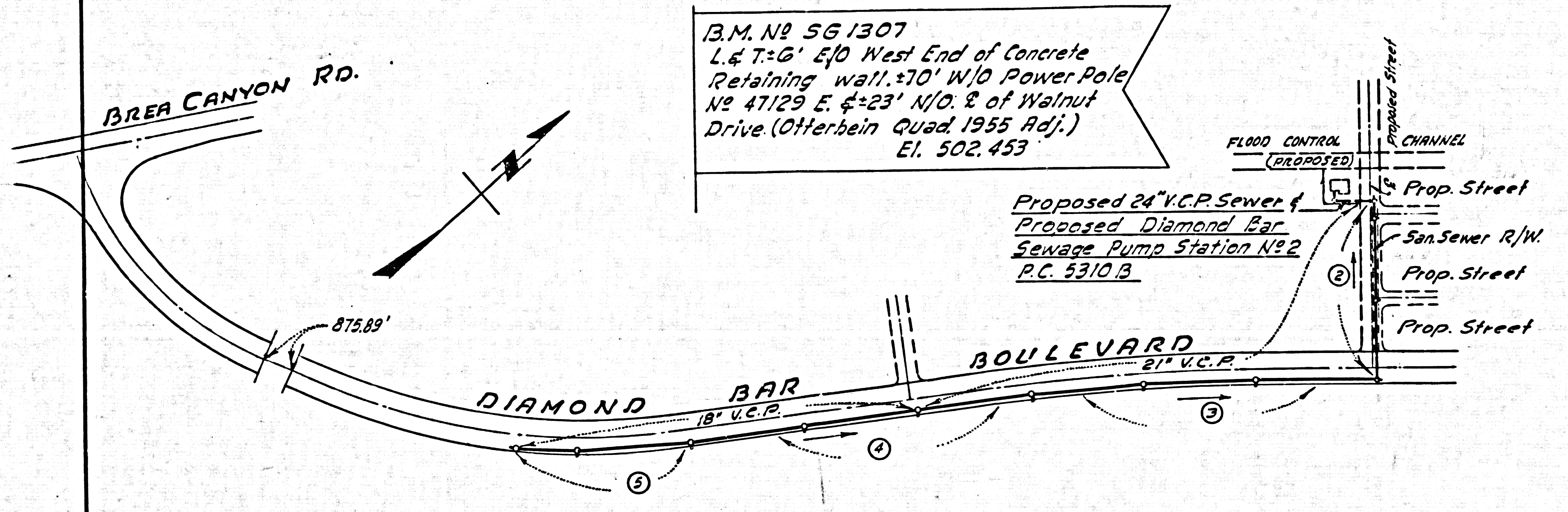
PROFILE ALIGNMENT AND GRADE OF **P.C.5839**
SANITARY SEWERS PAGE **1**
 TO BE CONSTRUCTED IN **J.N. 0355.66**
DIAMOND BAR BOULEVARD
 AND
SANITARY SEWER RIGHTS OF WAY
PRIVATE CONTRACT NO. 5839

- NOTES
1. PROVIDE STAKES ON THE PROPERTY LINE OR PROPERTY LINES PRODUCED AT RIGHT ANGLES TO THE SEWER LINE AT THE CENTER LINE OF EACH MANHOLE.
 2. NO REPRESENTATIVE OF THE COUNTY ENGINEER WILL SURVEY OR LAY OUT ANY PORTION OF THE WORK.
 3. THE OWNER OR HIS AUTHORIZED REPRESENTATIVE SHALL FURNISH THE COUNTY ENGINEER WITH GRADE SHEETS AND DRAINAGE PLANS FOR THE PROPERTY AND ADJACENT PROPERTIES. GRADES FOR THE PROPERTY AND ADJACENT PROPERTIES SHALL BE OBTAINED FROM THE COUNTY ENGINEER'S RECORD PLANS OR FROM THE COUNTY ENGINEER'S RECORD PLANS OR FROM THE COUNTY ENGINEER'S RECORD PLANS OR FROM THE COUNTY ENGINEER'S RECORD PLANS.
 4. THE COUNTY ENGINEER SHALL FURNISH THE OWNER WITH A REPORT SHOWING THE LOCATION OF THE SEWER LINE AND THE LOCATION OF THE SEWER LINE AND THE LOCATION OF THE SEWER LINE AND THE LOCATION OF THE SEWER LINE.
 5. NO REVISIONS SHALL BE MADE IN THESE PLANS WITHOUT THE APPROVAL OF THE COUNTY ENGINEER.
 6. USE STANDARD MANHOLE FRAMES AND COVERS, S-117, SEE SPEC. 8-117.
 7. USE STANDARD STRENGTH PIPE EXCEPT AS NOTED.
 8. USE "WEDGE LOCK" OR "SPREAD SEAL" FOR ALL V.C.P. JOINTS PER SPEC. SECS. 8-117 & 8-118.
 9. RESURFACE ALL TRENCH WITHIN PAVED AREA TO MEET L.A. COUNTY ROAD DEPT. OR CALIF. STATE HIGHWAY REQUIREMENTS IN ACCORDANCE WITH PERMITS.
 10. ENCASE FOUR FEET OF SEWER AT POINTS OF INTERFERENCE WITH POLES, CASE III, S-172.
 - 11.
 12. ALL STRUCTURES SHALL BE BRICK SEWER STRUCTURES, S-104, SEE SPEC. 8-104.
 13. FOR ALLOWABLE LEAKAGE TEST USE FORMULA NO. 1, SPEC. 8-104.
 14. MANHOLE TOPS IN UNIMPROVED RIGHTS-OF-WAY TO BE SIX INCHES ABOVE FINISHED GRADE.
 15. THE CONTRACTOR SHALL NOTIFY THE CONSTRUCTION DEPARTMENT BY TELEPHONE, HADSON 9-4747, EXT. 808 AT LEAST TWENTY-FOUR HOURS BEFORE STARTING ANY WORK UNDER THIS CONTRACT.
 16. STANDARD SPECIFICATIONS DATED OCT. 10, 1960 APPLY IN THE CONSTRUCTION OF THE PROJECT.

W.S. 39
3 SHEETS, 5 PAGES
 SCALE: VERT. 1" = 4' JULY 1961
 PREPARED IN THE OFFICES OF
QUINTON ENGINEERS, LTD.
 LOS ANGELES, CALIFORNIA
 BY: *John F. Quinton* REG. C. E. NO. 12507
 FOR LEGEND SEE PLAN NO. S-A-64

NOTES
 GRADES TO WHICH THIS IMPROVEMENT IS TO BE CONSTRUCTED ARE SHOWN ON PLANS AND PROFILES. GRADE POINTS FOR TOP OF CURBS, CENTER LINE OF STREETS, OR CENTER LINE OF ALLEYS ARE SHOWN BY CIRCLES ON PROFILES. AT ALL POINTS BETWEEN DESIGNATED POINTS THE GRADE SHALL BE ESTABLISHED SO AS TO CONFORM TO A STRAIGHT LINE DRAWN BETWEEN SAID DESIGNATED POINTS.
 ELEVATIONS ARE IN FEET ABOVE U.S.C. & G.S. SEA LEVEL DATUM OF 1929.
 THIS DRAWING AND THE DATA HEREON ARE HEREBY MADE A PART OF THE SPECIFICATIONS.
 WORK SHALL BE CONSTRUCTED ACCORDING TO SPECIFICATIONS ON FILE IN THE OFFICE OF THE COUNTY ENGINEER AND SHALL BE PROSECUTED ONLY IN THE PRESENCE OF THE COUNTY ENGINEER.
 BEFORE WORK CAN BE STARTED, THE CONTRACTOR MUST OBTAIN A PERMIT TO EXCAVATE IN COUNTY STREETS FROM THE COUNTY ROAD DEPT., DISTRICT OFFICE NO. 1, 1100 1/2 ST. AND PAY A FEE TO THE COUNTY ENGINEER'S ROOM 316 L.A. COUNTY BLDG. OR 8 P.M. ST. SUFFICIENT TO COVER THE COST OF CONSTRUCTION INSPECTION AND RECORD PLANS.
 APPROVAL OF THIS PLAN BY THE COUNTY OF LOS ANGELES DOES NOT CONSTITUTE A REPRESENTATION AS TO THE ACCURACY OF THE LOCATION OR OF THE EXISTENCE OR NON-EXISTENCE OF ANY UNDERGROUND UTILITY PIPE, OR STRUCTURE WITHIN THE LIMITS OF THIS PROJECT. THIS NOTE APPLIES TO ALL PAGES.
 IF WORK IS TO BE DONE IN A STATE HIGHWAY, A PERMIT MUST BE OBTAINED FROM THE STATE OF CALIFORNIA, DIVISION OF HIGHWAYS, 130 SOUTH SPRING STREET.

COUNTY OF LOS ANGELES, CALIFORNIA
 APPROVED, JOHN A. LAMBE, COUNTY ENGINEER APPROVED, C. R. COMPTON, CHIEF ENGINEER
 BY: *J. E. Brantly* ASST. SANITATION ENGINEER BY: *M. Posthumus* OFFICE ENGINEER
 CHECKED BY: *W. C. Peindl* 9-1-61
 OFFICE OF COUNTY ENGINEER, REG. C. E. NO. 2486
 SUBMITTED BY: *W. C. Peindl* SAN DIMAS REGIONAL ENGINEER

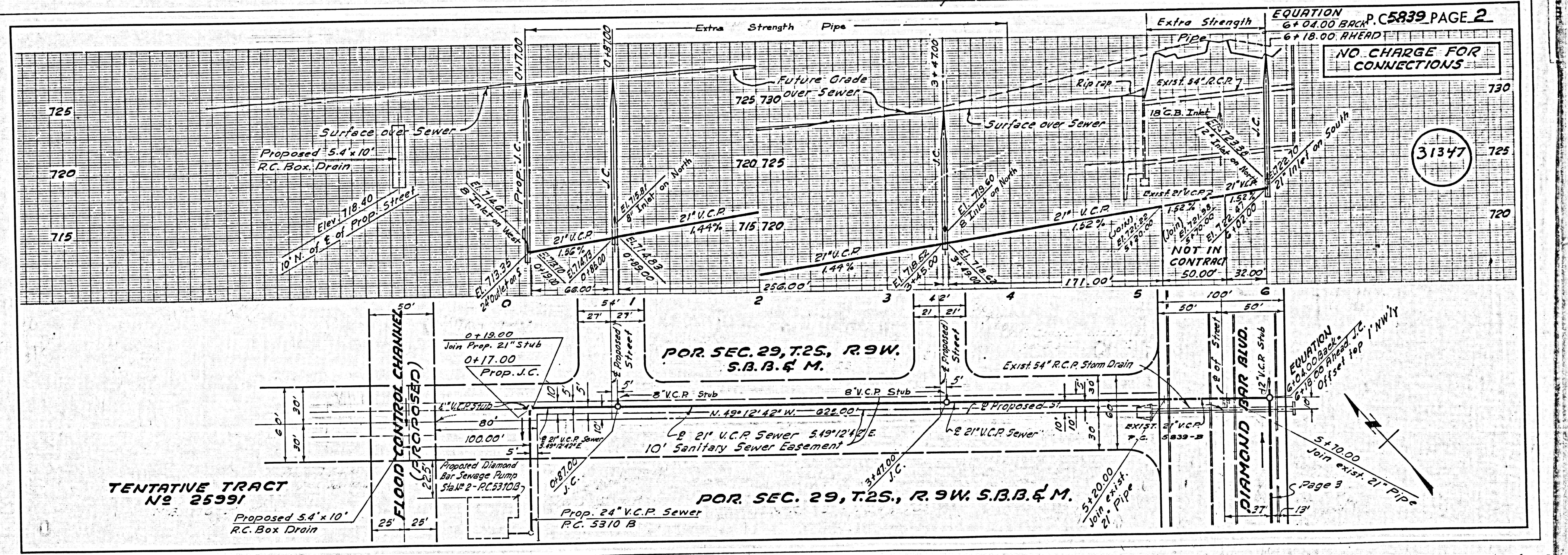


INDEX MAP
 SCALE: 1" = 300'

Basis of Bearings
 The bearings for Diamond Bar Blvd. as shown on F.M. No 20106 were used as a basis of bearing for the project.

NO CHARGE FOR CONNECTIONS
W. C. Peindl 8-29-61

NO CONNECTIONS FOR THE DISPOSAL OF INDUSTRIAL WASTES SHALL BE MADE TO SEWERS SHOWN ON THESE DRAWINGS WITHOUT WRITTEN PERMISSION FROM THE CHIEF ENGINEER AND GENERAL MANAGER OF THE COUNTY SANITATION DISTRICTS.



EQUATION **P.C.5839 PAGE 2**
 6+04.00 BACK
 6+18.00 RHEAD

NO CHARGE FOR CONNECTIONS

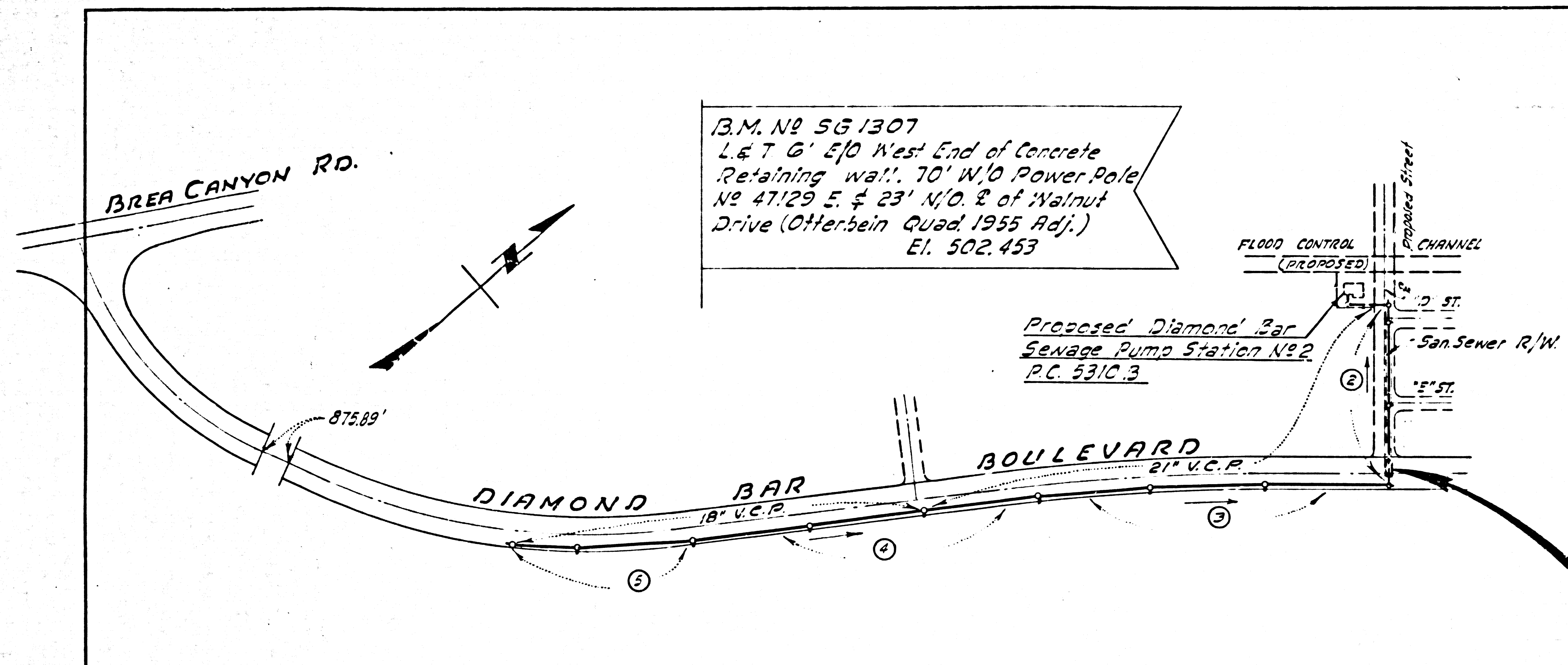
31347

TENTATIVE TRACT No 25991

POR. SEC. 29, T.2S., R.9W. S.B.B. & M.

EQUATION
 6+04.00 BACK
 6+18.00 RHEAD
 Offset top NWLY

5+20.00 Join exist. 21" Pipe



B.M. No 561307
 L & T G' E/D West End of Concrete
 Retaining Wall, 70' W/D Power Pole
 No 47129 E & 23' N/D E of Walnut
 Drive (Otterbein Quad, 1955 Adj.)
 El. 502.453

Proposed Diamond Bar
 Sewage Pump Station No. 2
 P.C. 53103

Basis of Bearings:
 The bearings for Diamond Bar Blvd. as shown
 on F.M. No 20106 were used as a basis of
 bearing for the project.

INDEX MAP
 SCALE: 1" = 300'

**NO CHARGE FOR
 CONNECTIONS**

SAN DIMAS BLDG. DIST. NO. 10

- NOTES**
1. PROVIDE STAKES ON THE PROPERTY LINE OR PROPERTY LINES PRODUCED AT RIGHT ANGLES TO THE SEWER LINE AT THE CENTER LINE OF EACH MANHOLE.
 2. NO REPRESENTATIVE OF THE COUNTY ENGINEER WILL SURVEY OR LAY OUT ANY PORTION OF THE WORK.
 3. THE CONTRACTOR SHALL BE RESPONSIBLE FOR OBTAINING ALL NECESSARY PERMITS AND RIGHTS OF WAY FROM THE COUNTY ENGINEER AND THE COUNTY ENGINEER SHALL BE RESPONSIBLE FOR OBTAINING ALL NECESSARY PERMITS AND RIGHTS OF WAY FROM THE COUNTY ENGINEER AND THE COUNTY ENGINEER SHALL BE RESPONSIBLE FOR OBTAINING ALL NECESSARY PERMITS AND RIGHTS OF WAY FROM THE COUNTY ENGINEER.
 4. THE CONTRACTOR SHALL BE RESPONSIBLE FOR OBTAINING ALL NECESSARY PERMITS AND RIGHTS OF WAY FROM THE COUNTY ENGINEER AND THE COUNTY ENGINEER SHALL BE RESPONSIBLE FOR OBTAINING ALL NECESSARY PERMITS AND RIGHTS OF WAY FROM THE COUNTY ENGINEER.
 5. NO REVISIONS SHALL BE MADE IN THESE PLANS WITHOUT THE APPROVAL OF THE COUNTY ENGINEER.
 6. USE STANDARD MANHOLE FRAMES AND COVERS, S-117, EXCEPT AS NOTED.
 7. USE EXTRA STRENGTH PIPE EXCEPT AS NOTED.
 8. USE CEMENT MORTAR OR WEDGELOCK OR SPEED SEAL FOR ALL V.C.P. JOINTS PER SPECS. SECS. 36 & 40.
 9. RESURFACE ALL TRENCH WITHIN PAVED AREA TO MEET L.A. COUNTY ROAD DEPT. OR CALIF. STATE HIGHWAY REQUIREMENTS IN ACCORDANCE WITH PERMITS.
 10. ENCASE FOUR FEET OF SEWER AT POINTS OF INTERFERENCE WITH POLES, CASE III, S-172.
 11. HOUSE LATERALS TO BE CONSTRUCTED WITH INVERTS AT PROPERTY LINE FEET BELOW CURB GRADE EXCEPT AS NOTED.
 12. ALL STRUCTURES SHALL BE BRICK SEWER STRUCTURES, S-104, EXCEPT AS NOTED.
 13. FOR ALLOWABLE LEAKAGE TEST USE FORMULA NO. 1, SPECS. SEC. 54.
 14. MANHOLE TOPS IN UNIMPROVED RIGHTS OF WAY TO BE SIX INCHES ABOVE FINISHED GRADE.
 15. THE CONTRACTOR SHALL NOTIFY THE CONSTRUCTION & STORM DRAIN DIVISION BY TELEPHONE, MADISON 9-4747, EXT. 362, AT LEAST TWENTY FOUR HOURS BEFORE STARTING ANY WORK UNDER THIS CONTRACT.
 16. STANDARD SPECIFICATIONS DATED OCT. 10, 1960 APPLY IN THE CONSTRUCTION OF THE PROJECT.

LIMITS OF CONSTRUCTION

NOTE:
 SEE LETTER DATED MARCH 21, 1961 FROM
 QUINTON ENGINEERS LTD. ON FILE IN
 SANITATION DIVISION OFFICE.

PROFILE ALIGNMENT AND GRADE OF **P. 55839B**
SANITARY SEWERS PAGE **1**
 TO BE CONSTRUCTED IN **W. 0355.66**

DIAMOND BAR BOULEVARD
 AND
 SANITARY SEWER RIGHTS OF WAY
PRIVATE CONTRACT NO.

32101

W.S.
3 SHEETS; 5 PAGES

SCALE: VERT. 1" = 20' HORIZ. 1" = 40' FEBRUARY, 1961

PREPARED IN THE OFFICES OF
QUINTON ENGINEERS, LTD.
 LOS ANGELES, CALIFORNIA

BY **H. W. Jones**
 REG. C. E. NO. **6237**

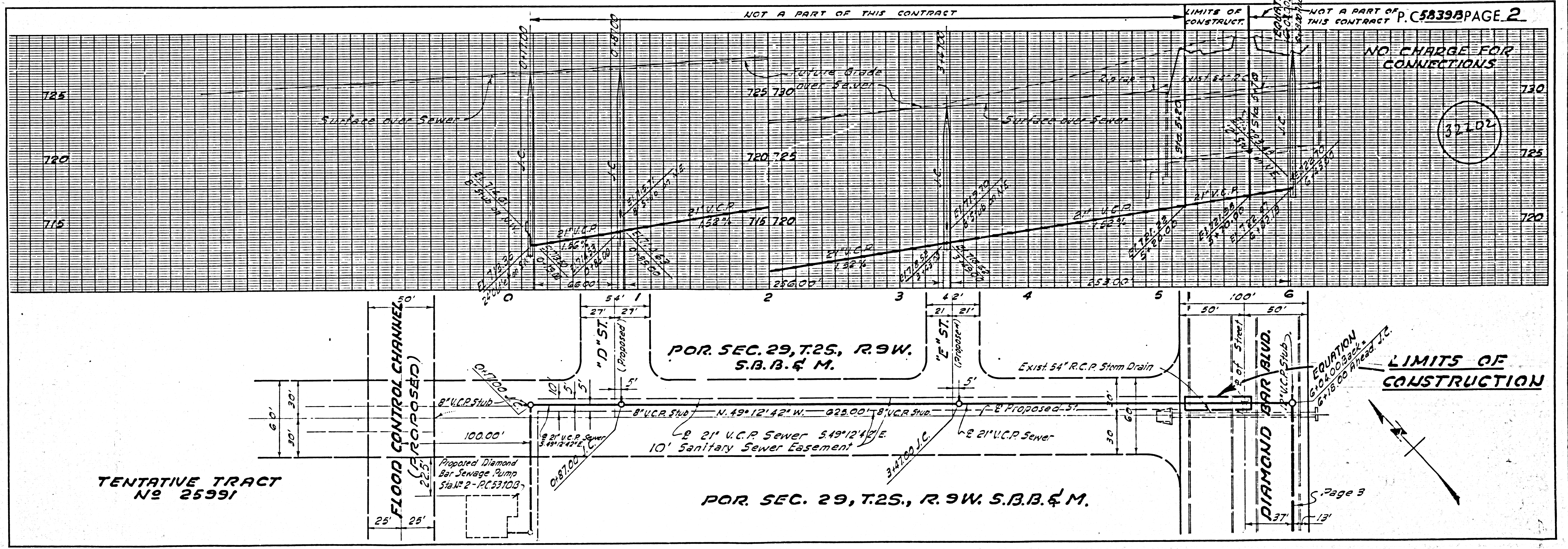
FOR LEGEND SEE PLAN NO. S-A-64

NOTE:
 GRADES TO WHICH THIS IMPROVEMENT IS TO BE CONSTRUCTED ARE SHOWN ON PLANS AND PROFILE GRADE POINTS FOR TOP OF CURBS, CENTER LINE OF STREETS, OR CENTER LINE OF ALLEYS ARE SHOWN BY CIRCLES ON PROFILE. AT ALL POINTS BETWEEN DESIGNATED POINTS THE GRADE SHALL BE ESTABLISHED SO AS TO CONFORM TO A STRAIGHT LINE DRAWN BETWEEN SAID DESIGNATED POINTS.
 ELEVATIONS ARE IN FEET ABOVE U.S. & C.S. SEA LEVEL DATUM OF 1929.
 THIS DRAWING AND THE DATA HEREON ARE HEREBY MADE A PART OF THE SPECIFICATIONS.
 WORK SHALL BE CONSTRUCTED ACCORDING TO SPECIFICATIONS ON FILE IN THE OFFICE OF THE COUNTY ENGINEER AND SHALL BE PROTECTED ONLY IN THE PRESENCE OF THE COUNTY ENGINEER.
 BEFORE WORK CAN BE STARTED, THE CONTRACTOR MUST OBTAIN A PERMIT TO EXCAVATE IN COUNTY STREETS FROM THE L.A. COUNTY ROAD DEPT. DISTRICT OFFICE AND MAKE A DEPOSIT WITH THE COUNTY ENGINEER ROOM 324 FAN AMERICAN BUILDING, 253 SO BROADWAY SUFFICIENT TO COVER THE COST OF CONSTRUCTION INSPECTION AND RECORD PLANS.
 APPROVAL OF THIS PLAN BY THE COUNTY OF LOS ANGELES DOES NOT CONSTITUTE A REPRESENTATION AS TO THE ACCURACY OF THE LOCATION OF OR THE EXISTENCE OR NON-EXISTENCE OF ANY UNDERGROUND UTILITY PIPE, OR STRUCTURE WITHIN THE LIMITS OF THIS PROJECT. THIS NOTE APPLIES TO ALL PAGES.
 IF WORK IS TO BE DONE IN A STATE HIGHWAY, A PERMIT MUST BE OBTAINED FROM THE STATE OF CALIFORNIA, DIVISION OF HIGHWAYS, 120 SOUTH SPRING STREET.

COUNTY OF LOS ANGELES, CALIFORNIA

APPROVED, JOHN A. LAMBIE, COUNTY ENGINEER

BY **H. W. Jones**
 SANITATION ENGINEER
 CHECKED BY **B. F. Kelly** 3-21-61
 OFFICE OF COUNTY ENGINEER, REG. C. E. NO. **11636**



POR. SEC. 29, T.25, R.9W.
 S.B.B. & M.

21" U.C.P. Sewer 5.49' 12.42" E.
 10' Sanitary Sewer Easement

POR. SEC. 29, T.25, R.9W. S.B.B. & M.

TENTATIVE TRACT
 No 25991

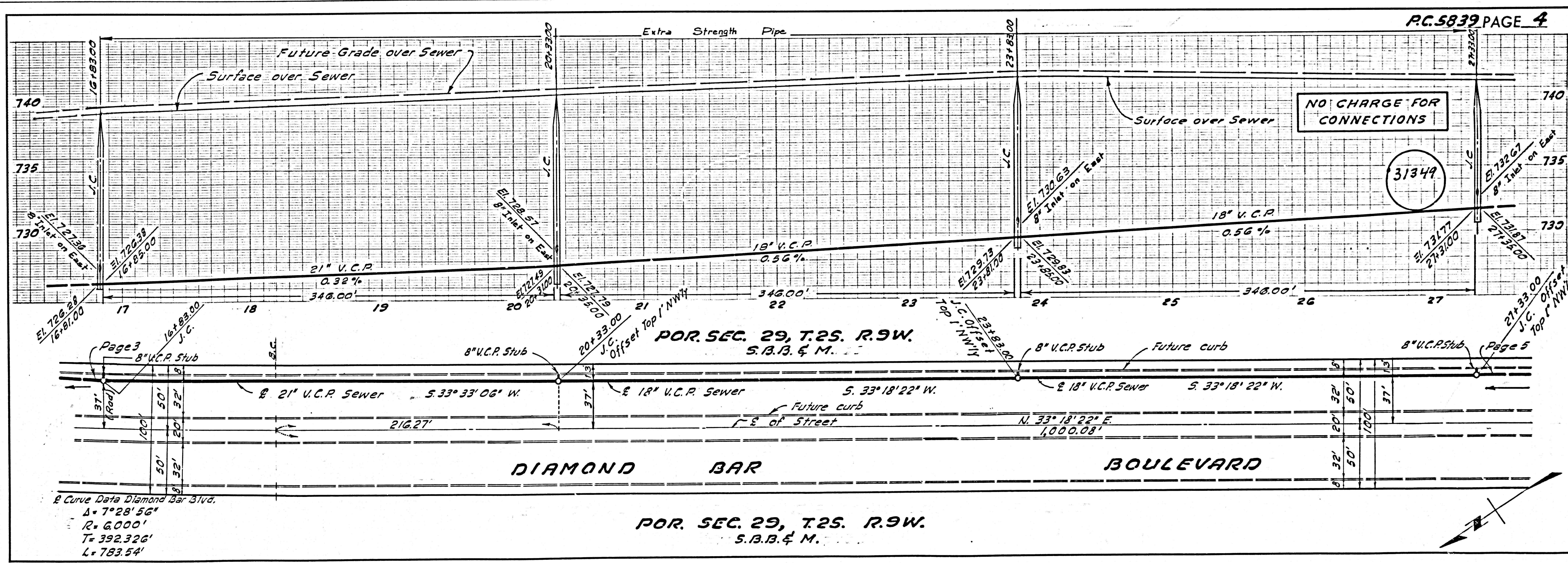
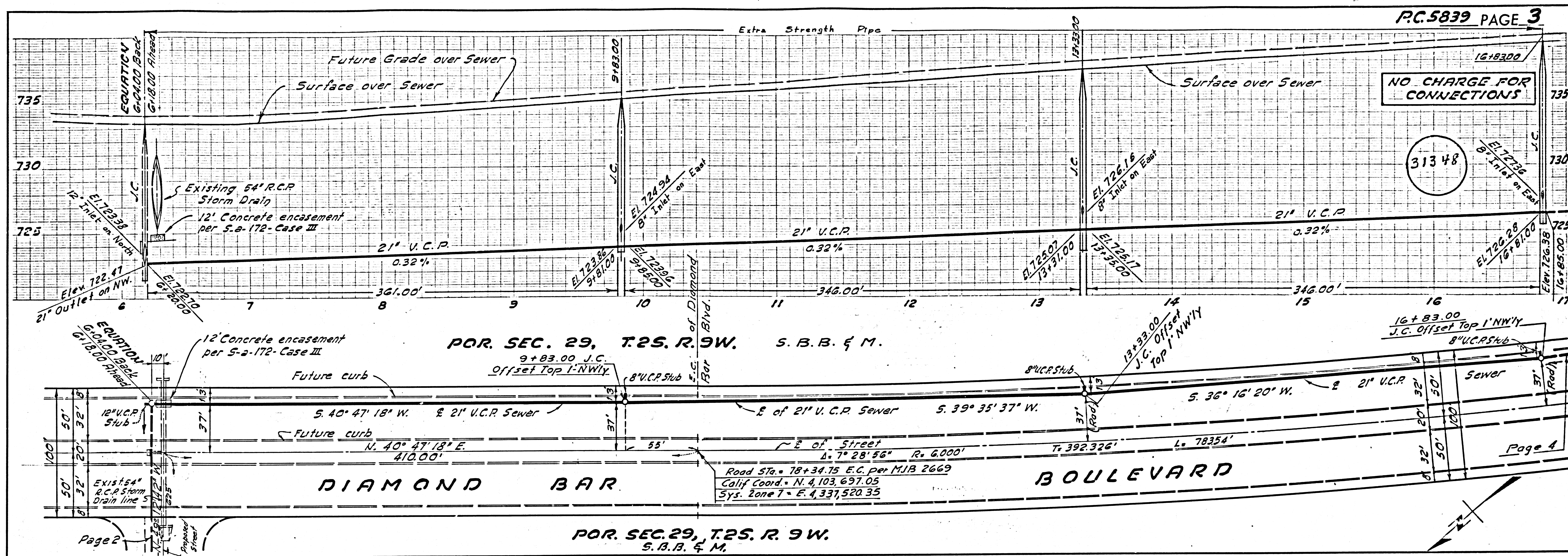
P. 55839B PAGE 2

**NO CHARGE FOR
 CONNECTIONS**

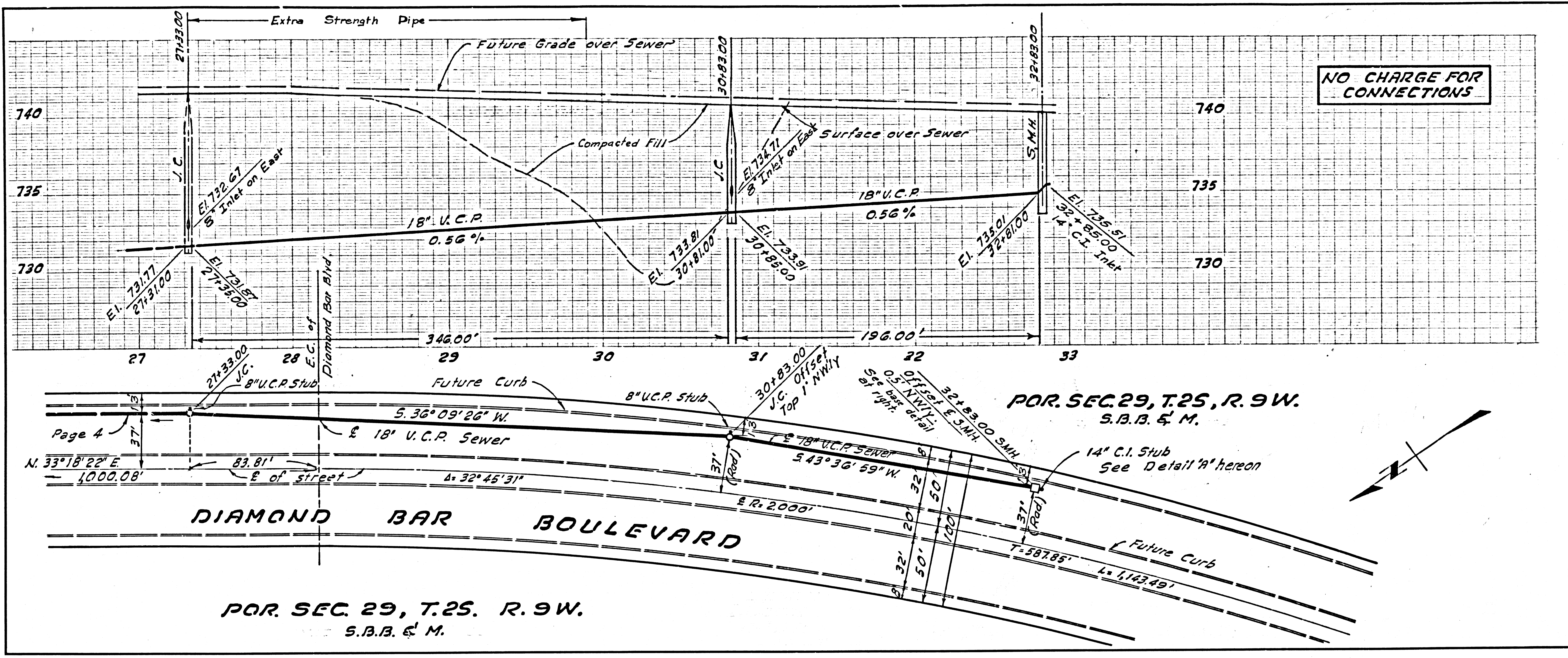
32102

**LIMITS OF
 CONSTRUCTION**

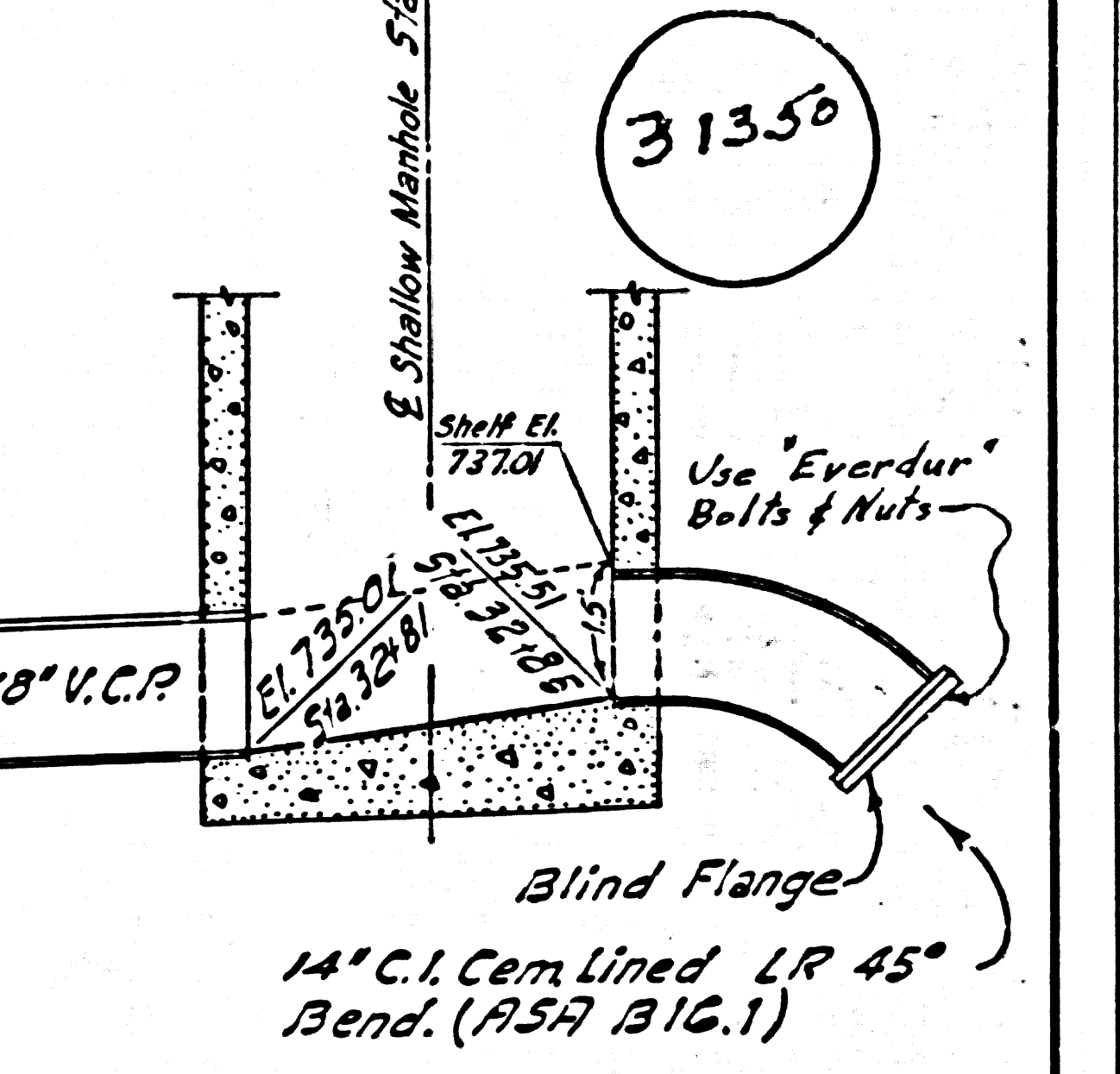
Page 3



Curve Data Diamond Bar Blvd.
 $\Delta = 7^\circ 28' 56''$
 $R = 6,000'$
 $T = 392.326'$
 $L = 783.54'$



NO CHARGE FOR CONNECTIONS



DETAIL "A" NO SCALE

