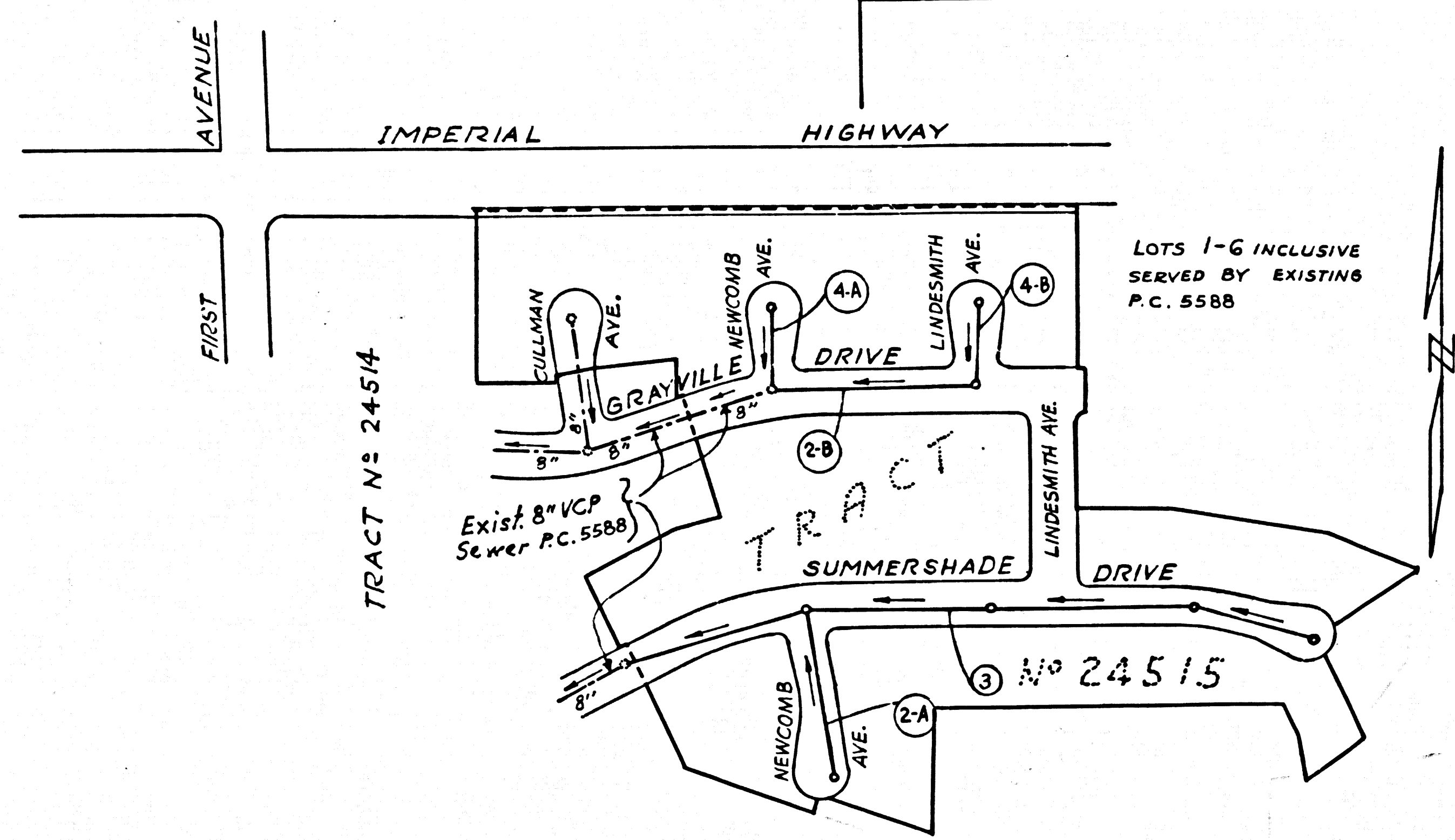


B.M. S Y 1140
 L & N. Ctr. conc. rdwl. ± 30' N. E
 IMPERIAL HIGHWAY ± 50' W.
 of E SANTA GERTRUDE AVE.
 ELEV. 253.541 (LA MIRADA-1955)

NORWALK BLDG. DIST. NO. 4.2

PROFILE ALIGNMENT AND GRADE OF **P.C. 5843**
SANITARY SEWERS PAGE 1
 TO BE CONSTRUCTED IN
TRACT N° 24515 J.N. 0355.70



INDEX MAP
 TRACT N° 24515
 P.C. 5843
 J.N. 0355.70

Scale: 1" = 200'

NO CONNECTIONS FOR THE DISPOSAL OF INDUSTRIAL WASTES SHALL BE MADE TO SEWERS SHOWN ON THESE DRAWINGS WITHOUT WRITTEN PERMISSION FROM THE CHIEF ENGINEER AND GENERAL MANAGER OF THE COUNTY SANITATION DISTRICTS.

- NOTES:
1. PROVIDE STAKES ON THE PROPERTY LINE OR PROPERTY LINES PRODUCED AT RIGHT ANGLES TO THE SEWER LINE AT THE CENTER LINE OF EACH MANHOLE.
 2. NO REPRESENTATIVE OF THE COUNTY ENGINEER WILL SURVEY OR LAY OUT ANY PORTION OF THE WORK.
 3. THE OWNER OR HIS AUTHORIZED REPRESENTATIVE SHALL FURNISH THE COUNTY ENGINEER WITH GRADE SHEETS AND STATIONING FOR ALL HOUSE LATERALS AND Y BRANCHES AND SHALL PROVIDE STAKES FOR THEM AT THEIR PROPER LOCATIONS WITH STATIONING PLAINLY MARKED. ANY CHANGE IN LOCATION SHALL BE REQUESTED IN WRITING BY THE OWNER OR HIS REPRESENTATIVE.
 4. THE PRIVATE ENGINEER SHALL FURNISH THE HOUSE LATERAL DEPTH AT THE PROPERTY LINE BELOW THE TOP OF CURB ELEVATION FOR EACH HOUSE LATERAL ON THE GRADE SHEET.
 5. NO REVISIONS SHALL BE MADE IN THESE PLANS WITHOUT THE APPROVAL OF THE COUNTY ENGINEER.
 6. USE STANDARD MANHOLE FRAMES AND COVERS, S-111, 48"X60" AS NOTED.
 7. USE STANDARD STRENGTH PIPE EXCEPT AS NOTED.
 8. USE CEMENT MORTAR OR "WEDGE-LOCK" OR "SPEED-SEAL" FOR ALL V.C.P. JOINTS PER SPEC., SECS. 36 & 41.
 9. RESURFACE ALL TRENCH WITHIN PAVED AREA TO MEET L.A. COUNTY ROAD DEPT. OR CALIF. STATE HIGHWAY REQUIREMENTS IN ACCORDANCE WITH PERMITS.
 10. ENCASE FOUR FEET OF SEWER AT POINTS OF INTERFERENCE WITH POLES, CASE III, S-172.
 11. HOUSE LATERALS TO BE CONSTRUCTED WITH INVERTS AT PROPERTY LINE 6 FEET BELOW CURB GRADE EXCEPT AS NOTED.
 12. ALL STRUCTURES SHALL BE BRICK SEWER STRUCTURES, S-104, 48"X60" AS NOTED.
 13. FOR ALLOWABLE LEAKAGE TEST USE FORMULA NO. 1, SPEC., SEC. 44.
 14. MANHOLE TOPS IN UNIMPROVED RIGHTS-OF-WAY TO BE SIX INCHES ABOVE FINISHED GRADE.
 15. THE CONTRACTOR SHALL NOTIFY THE CONSTRUCTION DIVISION BY TELEPHONE, MADISON 5-4717, EXT. 81551 AT LEAST TWENTY-FOUR HOURS BEFORE STARTING ANY WORK UNDER THIS CONTRACT.
 16. a) NO CONSTRUCTION WILL BE PERMITTED IN FILLED AREAS, UNLESS ACCEPTABLE CERTIFICATION IS SUBMITTED TO THE CONSTRUCTION DIVISION OF THE COUNTY ENGINEER'S DEPARTMENT THAT THE COMPACTION IS GREATER THAN 80%
 b) IF COMPACTION IS LESS THAN 80%, THE SEWER MUST BE CRADLED AS SHOWN ON PLANS
 c) IF COMPACTION IS GREATER THAN 80%, CRADLING OR SPECIAL MANHOLES BASES ARE NOT REQUIRED, HOWEVER JOINT COMPOUND MUST BE SUBSTITUTED FOR ALL JOINTS OF CEMENT MORTAR IN FILLED AREAS.
 17. STANDARD SPECIFICATIONS DATED OCT. 10, 1960 APPLY IN THE CONSTRUCTION OF THIS PROJECT.

NO CHARGE FOR CONNECTIONS -
Rolling 5-2-61

PRIVATE CONTRACT NO. 5843

W.S. 34
 2 SHEETS; 4 PAGES
 SCALE: VERT. 1" = 4'
 HORIZ. 1" = 40'
 MARCH, 1961
 PREPARED IN THE OFFICES OF
BARNETT, HOPEN, SMITH & SALIT
 CIVIL ENGINEERS AND LAND SURVEYORS
 By *Charles Albert Smith*
 REG. C. E. NO. 5708
 FOR LEGEND SEE PLAN NO. S-A-64

30879

NOTE: GRADES TO WHICH THIS IMPROVEMENT IS TO BE CONSTRUCTED ARE SHOWN ON PLANS AND PROFILES. GRADE POINTS FOR TOP OF CURB, CENTER LINE OF STREETS OR CENTER LINE OF ALLEYS ARE SHOWN BY CIRCLES ON PROFILES. AT ALL POINTS BETWEEN DESIGNATED POINTS THE GRADE SHALL BE ESTABLISHED SO AS TO CONFORM TO A STRAIGHT LINE DRAWN BETWEEN SAID DESIGNATED POINTS. ELEVATIONS ARE IN FEET ABOVE U.S.C. & G.S. SEA LEVEL DATUM OF 1929. THIS DRAWING AND THE DATA HEREON ARE HEREBY MADE A PART OF THE SPECIFICATIONS ON FILE IN THE OFFICE OF THE COUNTY ENGINEER AND SHALL BE PROSECUTED ONLY IN THE PRESENCE OF THE COUNTY ENGINEER. BEFORE WORK CAN BE STARTED THE CONTRACTOR MUST OBTAIN A PERMIT TO EXCAVATE IN COUNTY STREETS FROM THE L.A. COUNTY ROAD DEPT., DISTRICT OFFICE NO. 4, AND PAY A FEE WITH THE COUNTY ENGINEER, ROOM 310, COUNTY ENGINEER BLDG., 108 W. SECOND ST., L.A., SUFFICIENT TO COVER THE COST OF CONSTRUCTION INSPECTION AND RECORD PLANS. APPROVAL OF THIS PLAN BY THE COUNTY OF LOS ANGELES DOES NOT CONSTITUTE A REPRESENTATION AS TO THE ACCURACY OF THE LOCATION OR OF THE EXISTENCE OR NON-EXISTENCE OF ANY UNDERGROUND UTILITY PIPE, OR STRUCTURE WITHIN THE LIMITS OF THIS PROJECT. THIS NOTE APPLIES TO ALL PAGES. IF WORK IS TO BE DONE IN A STATE HIGHWAY, A PERMIT MUST BE OBTAINED FROM THE STATE OF CALIFORNIA, DIVISION OF HIGHWAYS, 120 SOUTH SPRING STREET.

COUNTY OF LOS ANGELES, CALIFORNIA
 APPROVED, JOHN A. LAMIE, COUNTY ENGINEER APPROVED, C. COMPTON, CHIEF ENGINEER
 SO. SAN. DIST. NO. 18
 BY *C.E. Priddy* ASST. SANITATION ENGINEER BY *C. Compton* OFFICE ENGINEER
 CHECKED BY *St. O. W. 5-9-61*
 OFFICE OF COUNTY ENGINEER, REG. C. E. NO. 5404
 SUBMITTED BY: *John L. E. 5-2-61*
 LOS CERRITOS REGIONAL ENGINEER, REG. C. E. 3871

