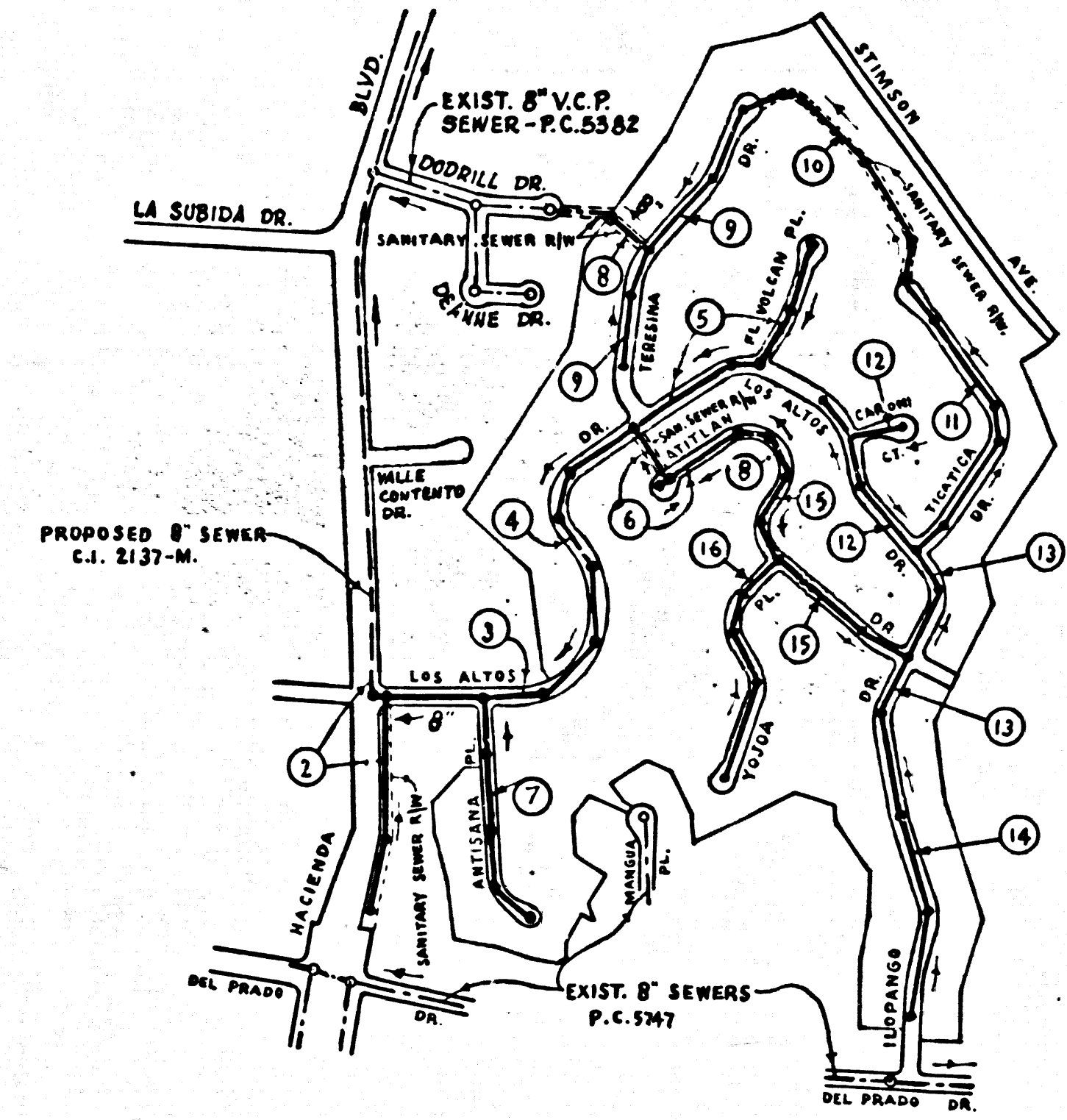
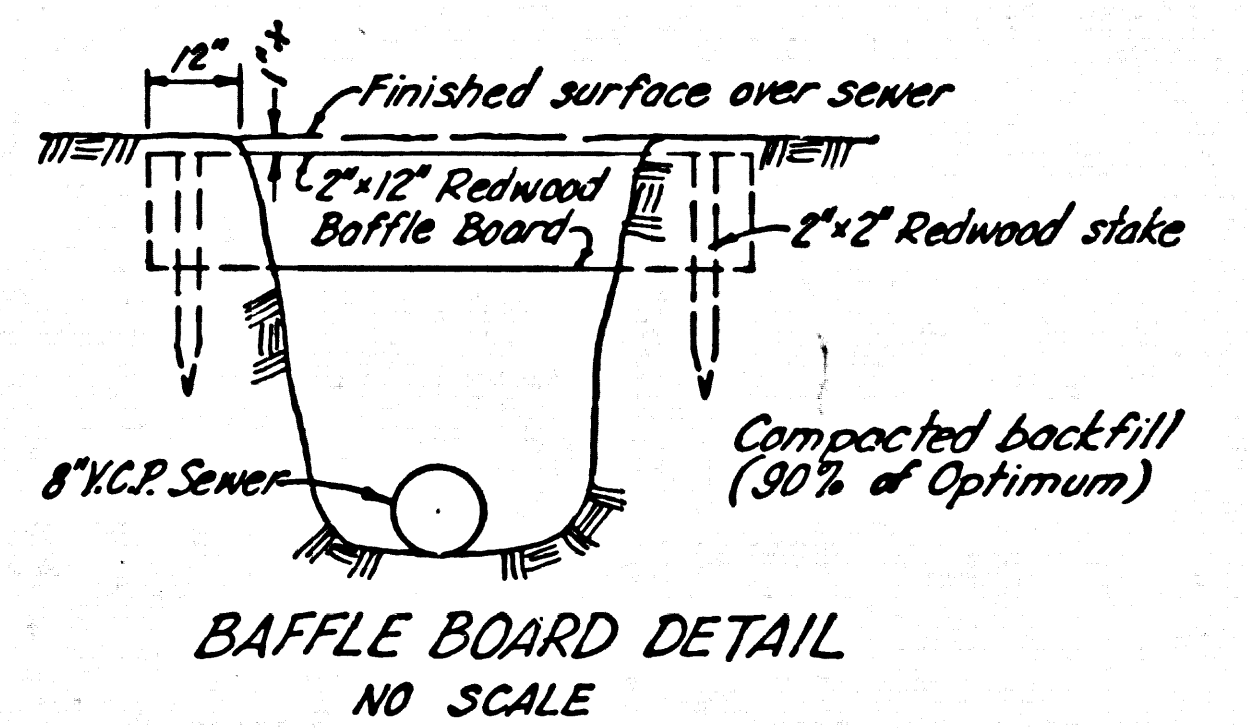


B.M. S.G. 1705 El. 550.710 - 1955
 2" I.P. with Co. Engr. tag - 12" dia.
 & int. of existing Hacienda Blvd.
 & prop. & Luitweiler Rd.
 C. & G.S. Prelim. adj. (Whittier 1955)



INDEX MAP
 SCALE: 1"=60'

REVISION
 Page 8
 Main line lowered between sta. 7+73.45 & 9+18.91
 APPROVED *W.C. Poindexter* 9-15-61
 OFFICE OF COUNTY ENGINEER



- NOTES:
- Each end of baffle board will extend one foot into undisturbed ground.
 - Baffle boards shall be spaced so that the top of the lower board shall be level with the bottom of the next higher board.
 - The upper layer of backfill to be one foot minimum of top soil. Top soil shall be tamped in place and planted with Perennials of same type as those on adjacent slopes or as required in accordance with grading plan. Soil shall be adequately watered until growth is restored.

DOUBLE SCALE
 PUENTE BLDG. DIST. NO. 2

PROFILE ALIGNMENT AND GRADE OF
 SANITARY SEWERS PAGE 1
 TO BE CONSTRUCTED IN
 TRACT No 26145
 AND
 SANITARY SEWER RIGHTS OF WAY
 PRIVATE CONTRACT NO. 5844

W.S. 38
 8 SHEETS; 16 PAGES

SCALE: VERT. 1"=8'
 HORIZ. 1"=40'

MARCH, 1961
 PREPARED IN THE OFFICES OF
 AMCO ENGINEERS
 8844 W. OLYMPIC BLVD.
 BEVERLY HILLS, CALIF.
 REG. P. E. NO. 11467

FOR LEGEND SEE PLAN NO. S-A-64

- NOTES:
- PROVIDE STAKES ON THE PROPERTY LINE OR PROPERTY LINES PRODUCED AT RIGHT ANGLES TO THE SEWER LINE AT THE CENTER LINE OF EACH MANHOLE.
 - NO REPRESENTATIVE OF THE COUNTY ENGINEER WILL SURVEY OR LAY OUT ANY PORTION OF THE WORK.
 - THE OWNER OR HIS AUTHORIZED REPRESENTATIVE SHALL FURNISH THE COUNTY ENGINEER WITH GRADE SHEETS AND STATIONING FOR ALL HOUSE LATERALS AND Y BRANCHES AND SHALL PROVIDE STAKES FOR THEM AT THEIR PROPER LOCATIONS WITH STATIONING PLAINLY MARKED. ANY CHANGE IN LOCATION SHALL BE REQUESTED IN WRITING BY THE OWNER OR HIS REPRESENTATIVE.
 - THE PRIVATE ENGINEER SHALL FURNISH THE HOUSE LATERAL DEPTH AT THE PROPERTY LINE BELOW THE TOP OF CURB ELEVATION FOR EACH HOUSE LATERAL ON THE GRADE SHEET.
 - NO REVISIONS SHALL BE MADE IN THESE PLANS WITHOUT THE APPROVAL OF THE COUNTY ENGINEER.
 - USE STANDARD MANHOLE FRAMES AND COVERS, S-117.
 - USE STANDARD STRENGTH PIPE EXCEPT AS NOTED.
 - USE CEMENT MORTAR OR "WEDGE-LOCK" OR "SPEED-SEAL" FOR ALL V.C.P. JOINTS PER SPECS, SECS. 34 & 41.
 - RESURFACE ALL TRENCH WITHIN PAVED AREA TO MEET L.A. COUNTY ROAD DEPT. OR CALIF. STATE HIGHWAY REQUIREMENTS IN ACCORDANCE WITH PERMITS.
 - ENCASE FOUR FEET OF SEWER AT POINTS OF INTERFERENCE WITH POLES, CASE III, S-172.
 - HOUSE LATERALS TO BE CONSTRUCTED WITH INVERTS AT PROPERTY LINE 6 FEET BELOW CURB GRADE EXCEPT AS NOTED.
 - ALL STRUCTURES SHALL BE BRICK SEWER STRUCTURES, S-104.
 - FOR ALLOWABLE LEAKAGE TEST USE FORMULA NO. 1, SPECS, SEC. 54.
 - MANHOLE TOPS IN UNIMPROVED RIGHTS-OF-WAY TO BE SIX INCHES ABOVE FINISHED GRADE.
 - THE CONTRACTOR SHALL NOTIFY THE CONSTRUCTION DIVISION BY TELEPHONE, MADISON 9-474, EXT. 881 AT LEAST TWENTY-FOUR HOURS BEFORE STARTING ANY WORK UNDER THIS CONTRACT.
 - STANDARD SPECIFICATIONS DATED OCTOBER 10, 1960 SHALL APPLY IN THE CONSTRUCTION OF THIS PROJECT.
 - "SEWERS IN FILLED GROUND"
 - NO CONSTRUCTION WILL BE PERMITTED IN FILLED AREAS UNLESS ACCEPTABLE CERTIFICATION IS SUBMITTED TO THE CONSTRUCTION DIVISION OF THE COUNTY ENGINEER'S DEPARTMENT THAT RELATIVE COMPACTION IS GREATER THAN 80%.
 - IF COMPACTION IS LESS THAN 80%, THE SEWER MUST BE CRADLED AS SHOWN ON THE PLANS PER S-176.
 - IF COMPACTION IS GREATER THAN 80%, NEITHER CRADLING NOR SPECIAL MANHOLE BASES WILL BE REQUIRED, HOWEVER, JOINT COMPOUND OR "WEDGE-LOCK" OR "SPEED-SEAL" MUST BE SUBSTITUTED FOR CEMENT MORTAR FOR ALL JOINTS IN FILLED AREAS.
 - ON LOTS WITH STATION SHOWN IN CIRCLE, THE HOUSE LATERAL SHALL NOT BE CONSTRUCTED UPSTREAM OF THAT STATION.

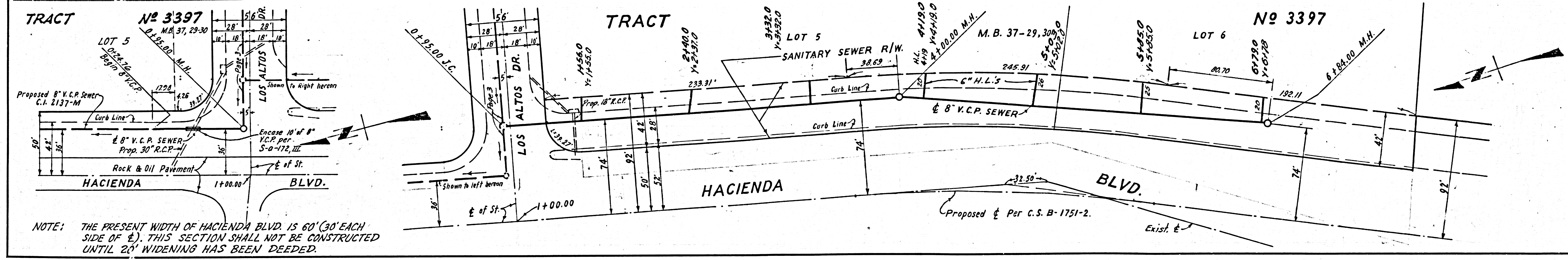
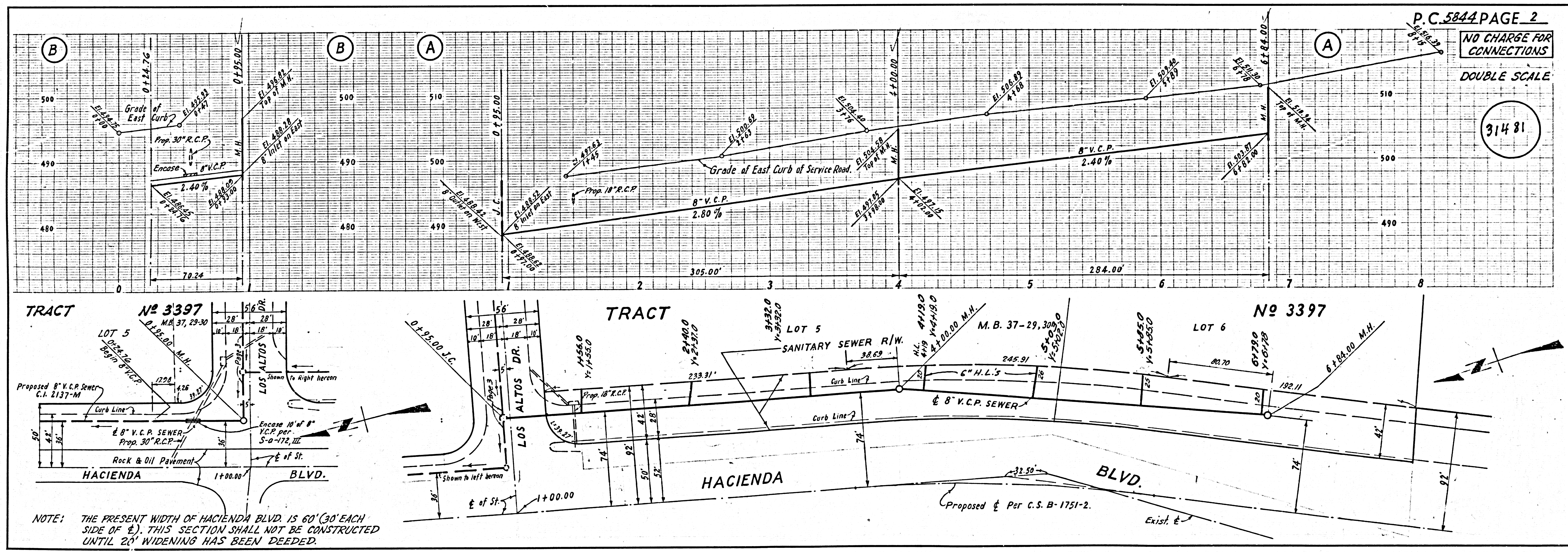
NO CHARGE FOR CONNECTIONS
 7-77 (Revised 5-5-61)

NO CONNECTIONS FOR THE DISPOSAL OF INDUSTRIAL WASTES SHALL BE MADE TO SEWERS SHOWN ON THESE PLANS WITHOUT WRITTEN PERMISSION FROM THE CHIEF ENGINEER AND GENERAL MANAGER OF THE COUNTY SANITATION DISTRICT.

NOTE: DO NOT ISSUE PERMITS UNTIL OUTLET SEWERS ARE CONSTRUCTED.

NOTE:
 GRADES TO WHICH THIS IMPROVEMENT IS TO BE CONSTRUCTED ARE SHOWN ON PLANS AND PROFILES. GRADE POINTS FOR TOP OF CURB, CENTER LINE OF STREETS, OR CENTER LINE OF ALLEYS ARE SHOWN BY CIRCLES ON PROFILES AT ALL POINTS BETWEEN DESIGNATED POINTS. THE GRADE SHALL BE ESTABLISHED SO AS TO CONFORM TO A STRAIGHT LINE DRAWN BETWEEN SAID DESIGNATED POINTS.
 ELEVATIONS ARE IN FEET ABOVE U.S.C. & G.S. SEA LEVEL DATUM OF 1929.
 THIS DRAWING AND THE DATA HEREON ARE HEREBY MADE A PART OF THE SPECIFICATIONS. WORK SHALL BE CONSTRUCTED ACCORDING TO SPECIFICATIONS ON FILE IN THE OFFICE OF THE COUNTY ENGINEER AND SHALL BE PROSECUTED ONLY IN THE PRESENCE OF THE COUNTY ENGINEER.
 BEFORE WORK CAN BE STARTED, THE CONTRACTOR MUST OBTAIN A PERMIT TO EXCAVATE IN COUNTY STREETS FROM THE L.A. COUNTY ROAD DEPT., DISTRICT OFFICE NO. 1, AND PAY A FEE TO THE COUNTY ENGINEER, ROOM 318 COUNTY BLDG., 108 W. 2ND ST., L.A., SUFFICIENT TO COVER THE COST OF CONSTRUCTION INSPECTION AND RECORD PLANS.
 APPROVAL OF THIS PLAN BY THE COUNTY OF LOS ANGELES DOES NOT CONSTITUTE A REPRESENTATION AS TO THE ACCURACY OF THE LOCATION OR THE EXISTENCE OR NON-EXISTENCE OF ANY UNDERGROUND UTILITY PIPE, OR STRUCTURE WITHIN THE LIMITS OF THIS PROJECT. THIS NOTE APPLIES TO ALL PAGES.
 NO WORK IS TO BE DONE IN A STATE HIGHWAY. A PERMIT MUST BE OBTAINED FROM THE STATE OF CALIFORNIA, DIVISION OF HIGHWAYS, 120 SOUTH SPRING STREET.

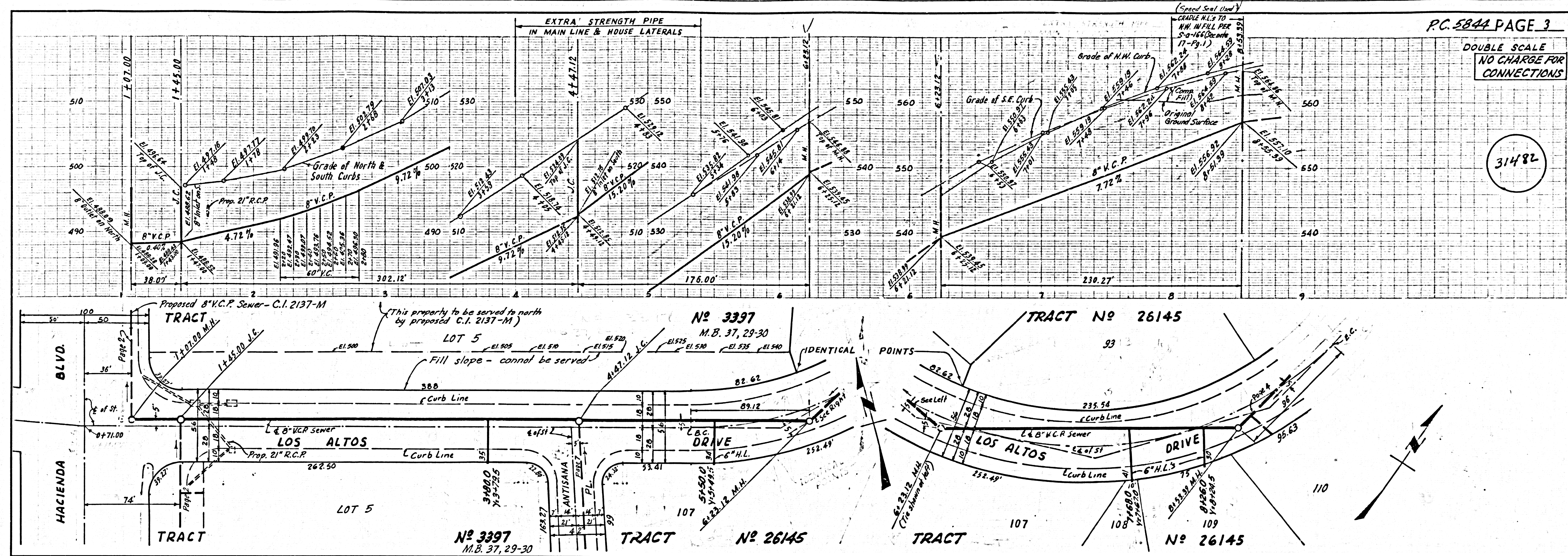
COUNTY OF LOS ANGELES, CALIFORNIA
 APPROVED, JOHN A. LAMBIE, COUNTY ENGINEER
 APPROVED, C.A. COMPTON, CHIEF ENGINEER
 CO. SAN. DIST. NO. 21
 BY *C.E. Priddy*, ASS'T. SANITATION ENGINEER
 BY *J. Robinson*, OFFICE ENGINEER
 CHECKED BY *S.K. Under*, 5-2-61
 OFFICE OF COUNTY ENGINEER, REG. C. E. NO. 2526
 SUBMITTED *W.C. Poindexter* 5-5-61
 SAN DIMAS REGIONAL ENGINEER



NOTE: THE PRESENT WIDTH OF HACIENDA BLVD. IS 60' (30' EACH SIDE OF E). THIS SECTION SHALL NOT BE CONSTRUCTED UNTIL 20' WIDENING HAS BEEN DEEDED.

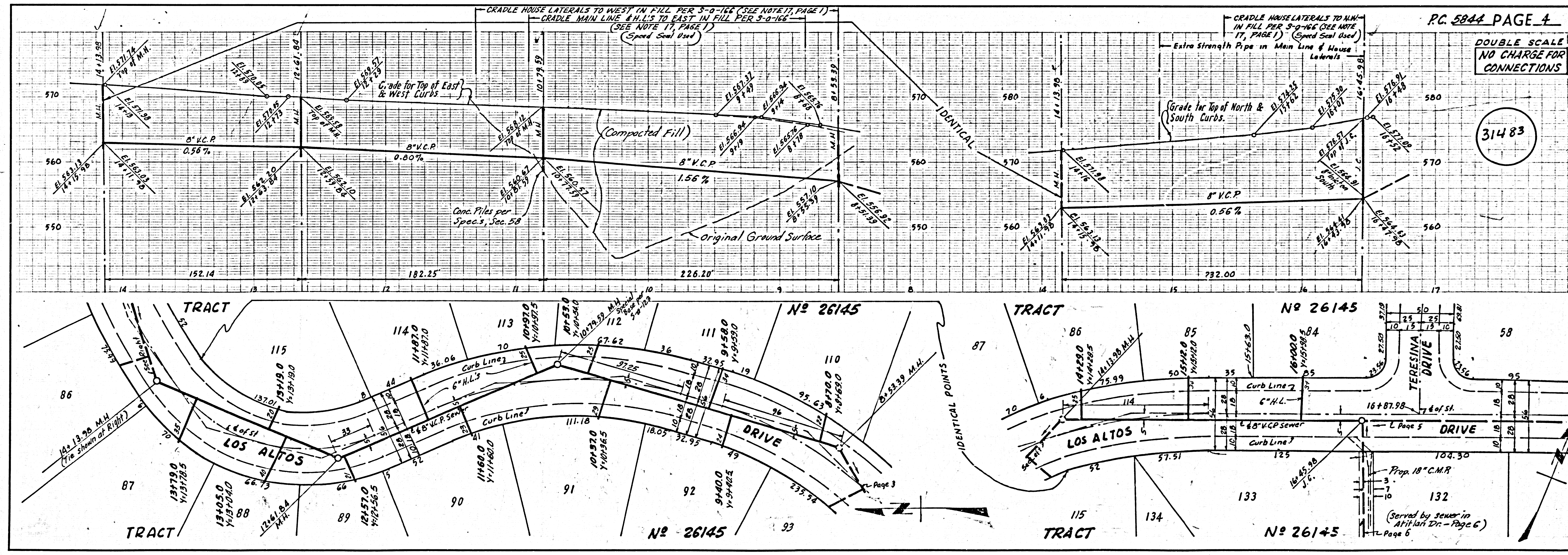
DOUBLE SCALE
NO CHARGE FOR
CONNECTIONS

31482



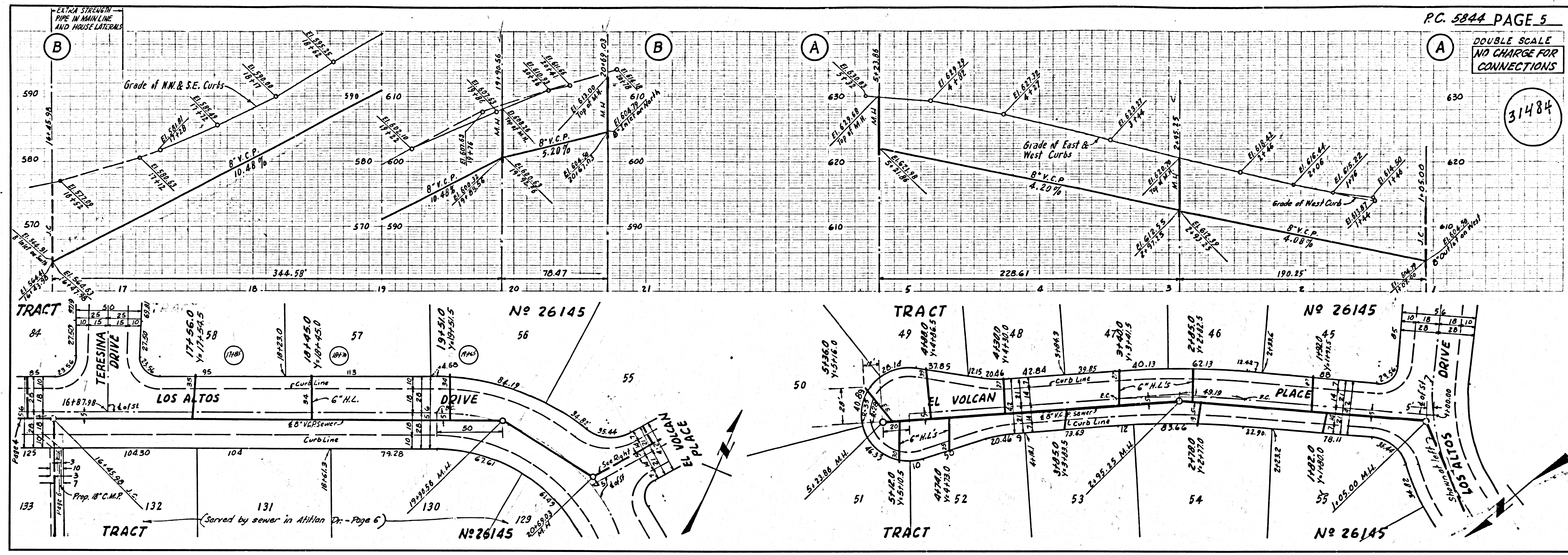
DOUBLE SCALE
NO CHARGE FOR
CONNECTIONS

31483



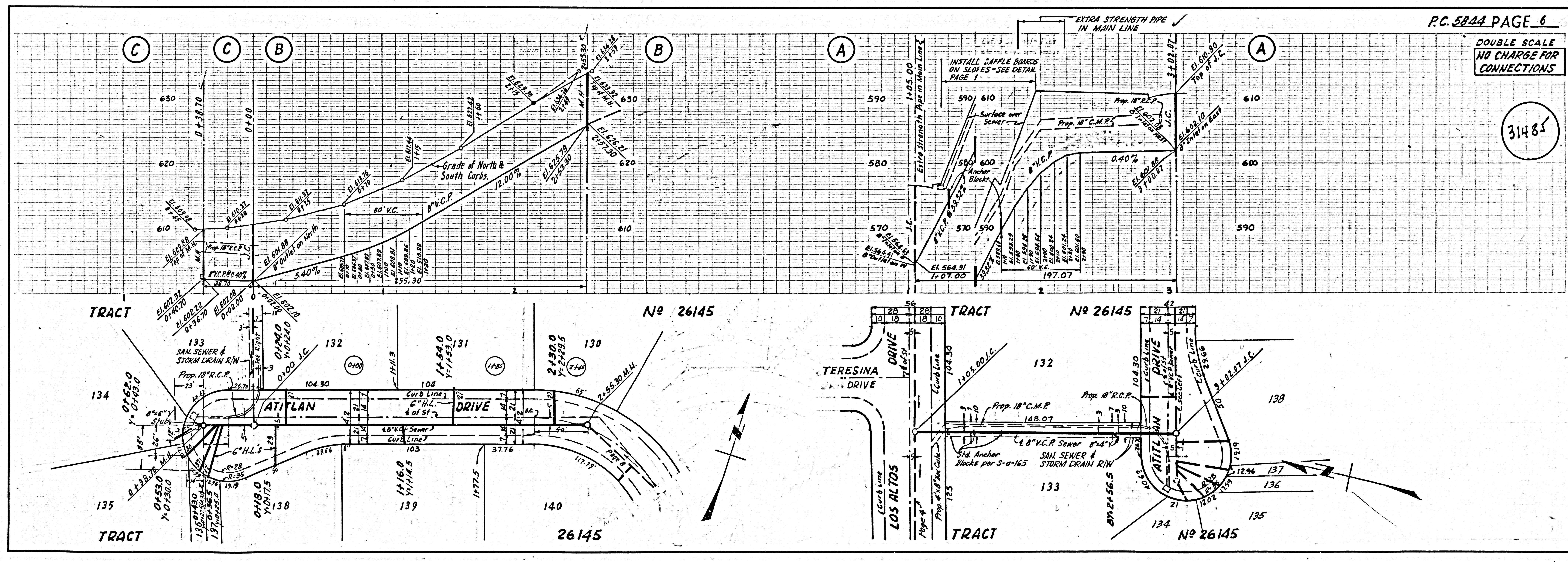
DOUBLE SCALE
NO CHARGE FOR
CONNECTIONS

31484



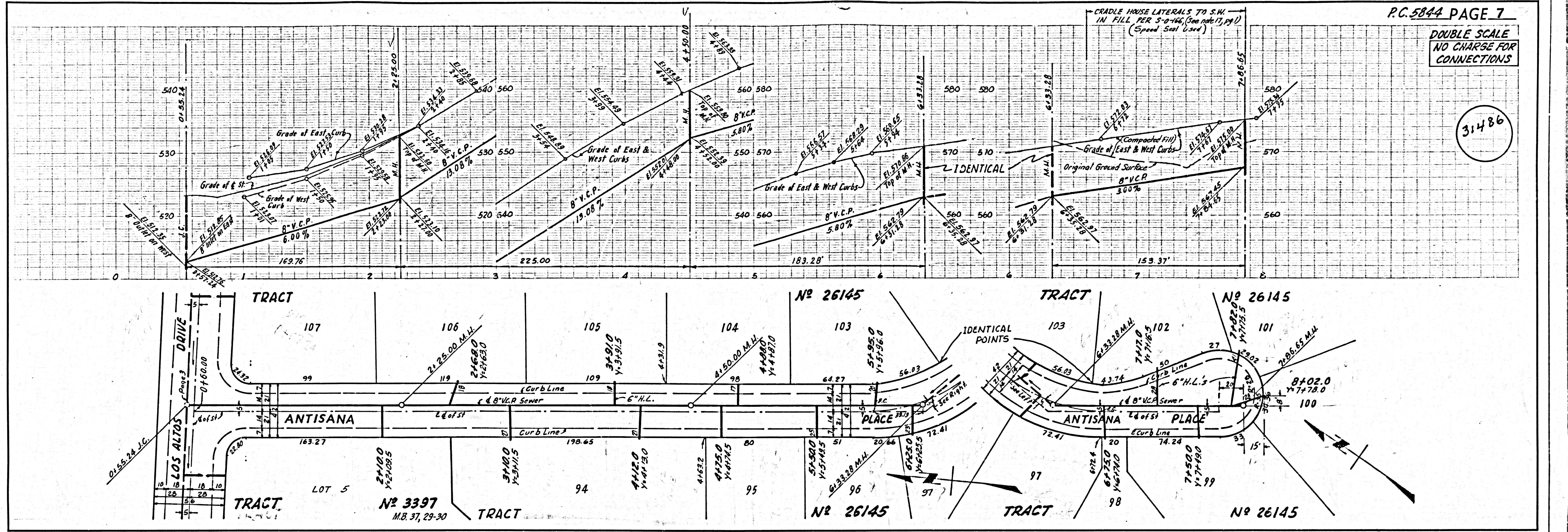
DOUBLE SCALE
NO CHARGE FOR
CONNECTIONS

31485



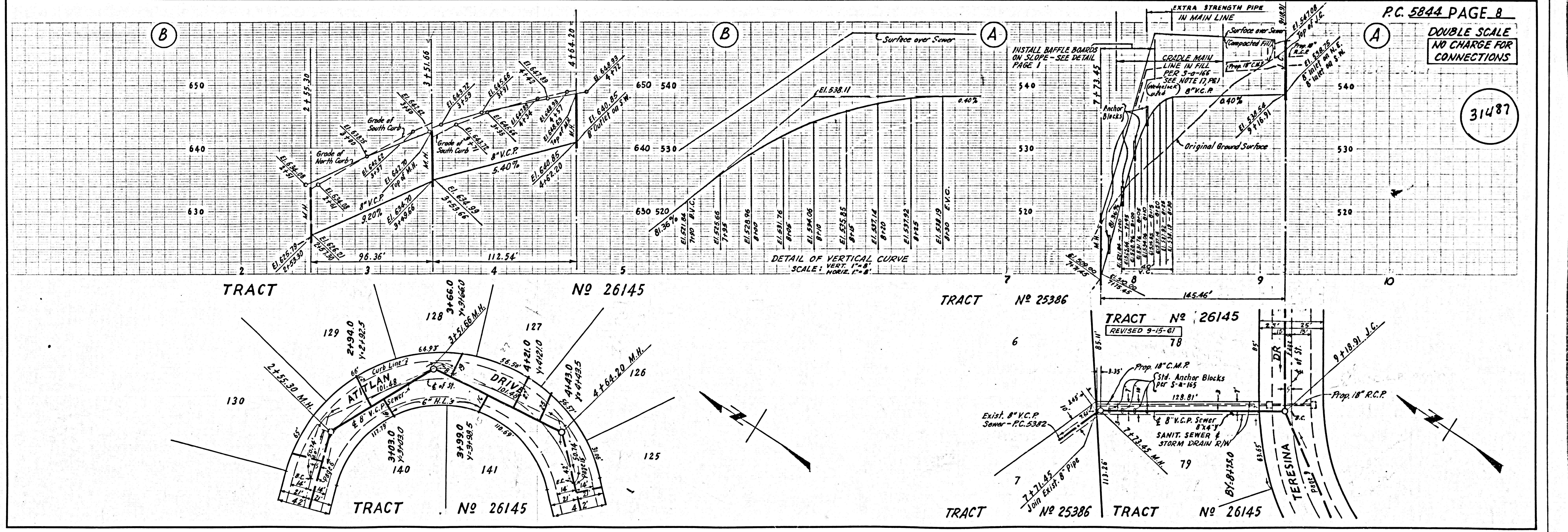
DOUBLE SCALE
NO CHARGE FOR
CONNECTIONS

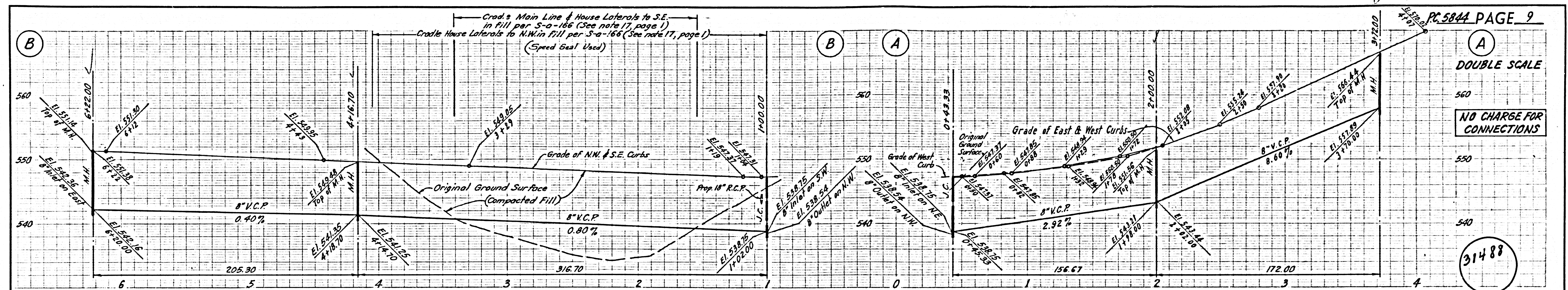
31486



DOUBLE SCALE
NO CHARGE FOR
CONNECTIONS

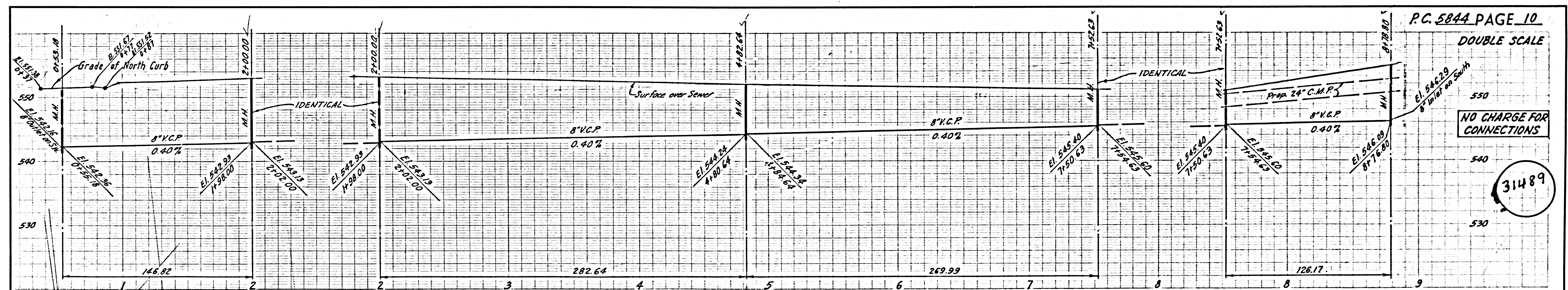
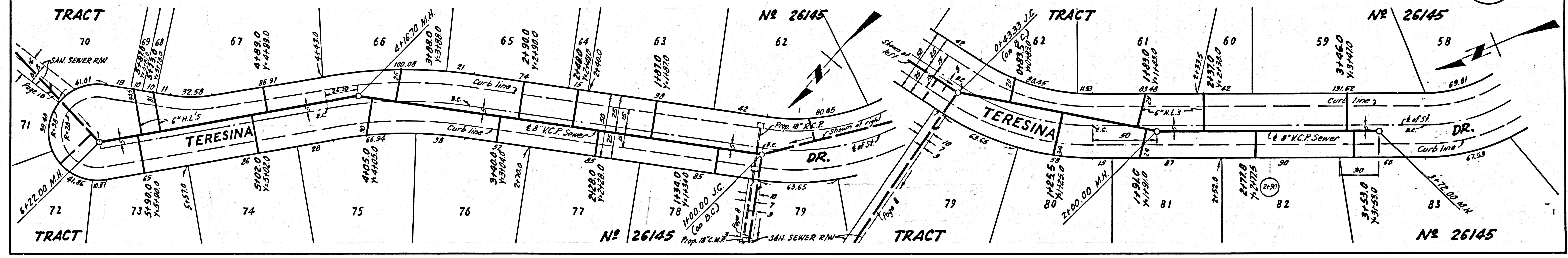
31487





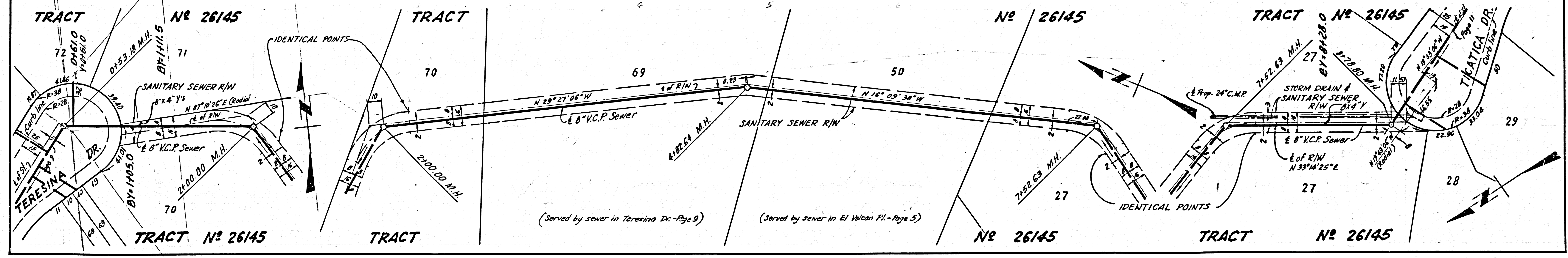
DOUBLE SCALE
NO CHARGE FOR CONNECTIONS

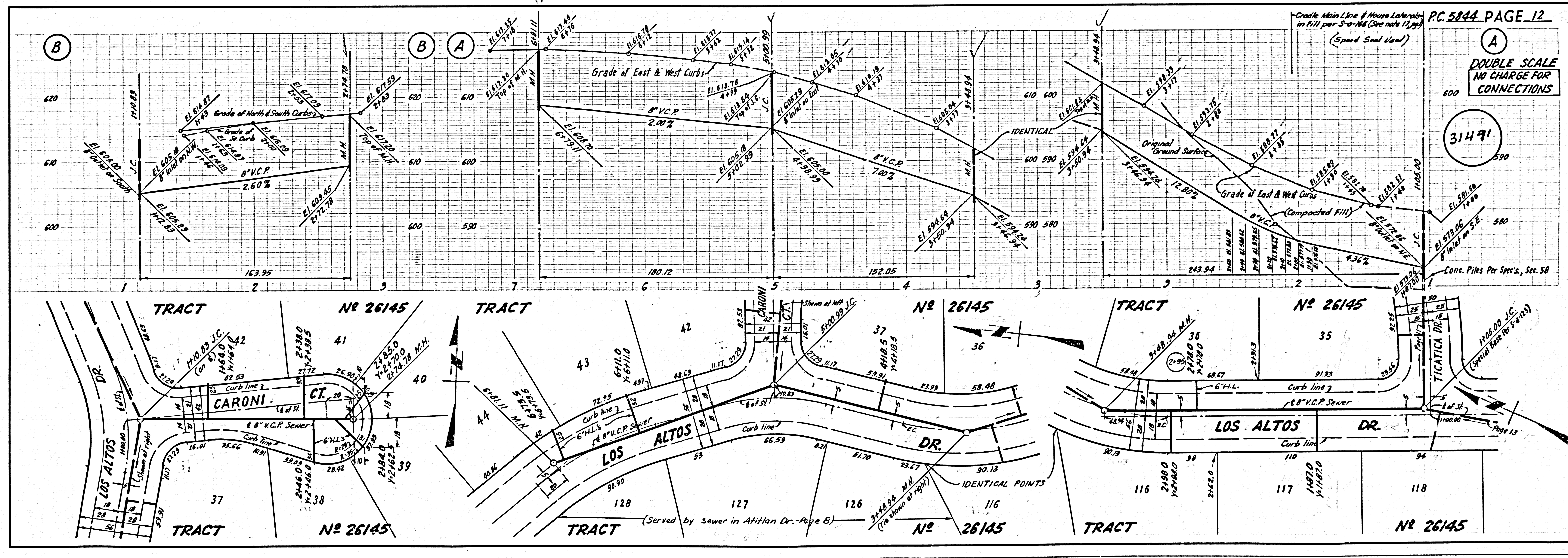
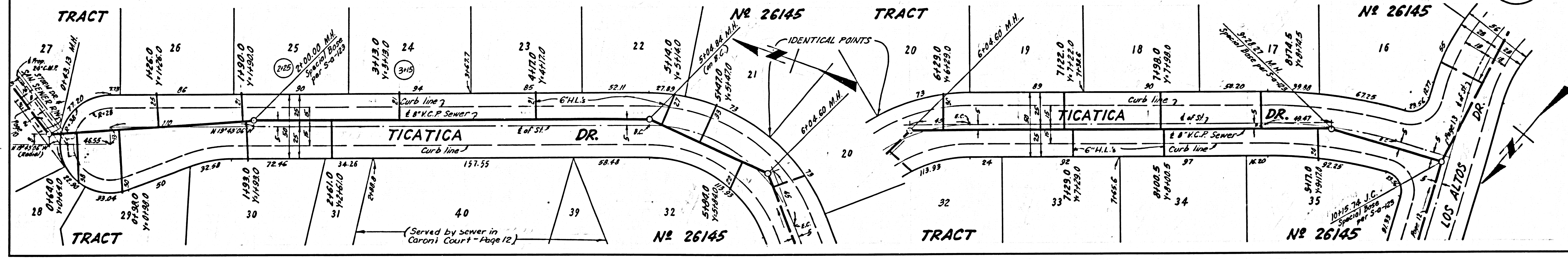
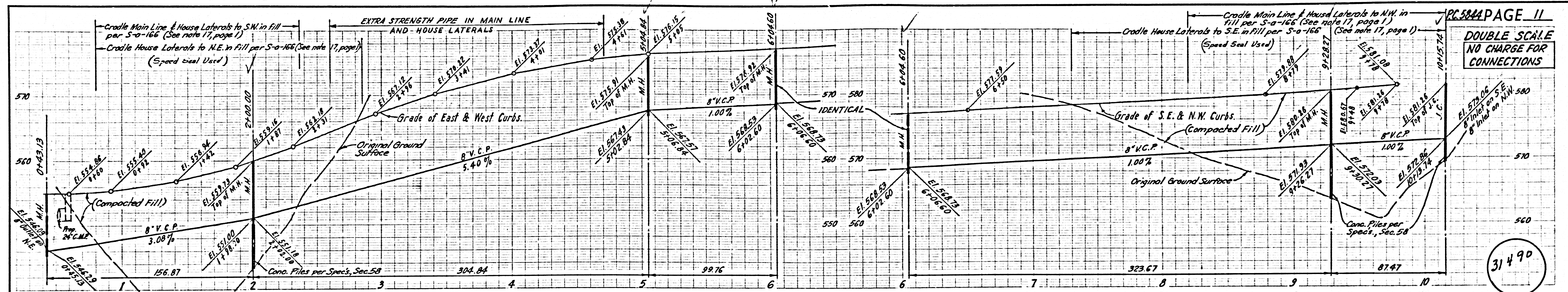
31488



DOUBLE SCALE
NO CHARGE FOR CONNECTIONS

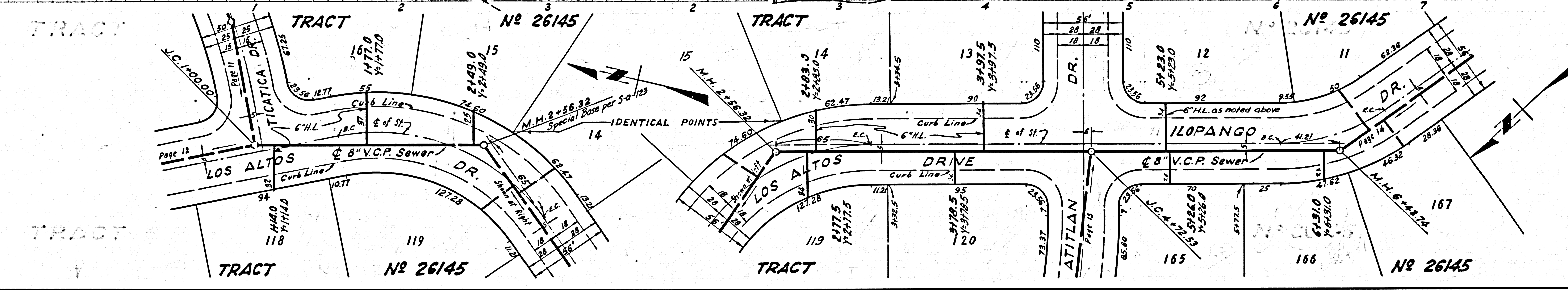
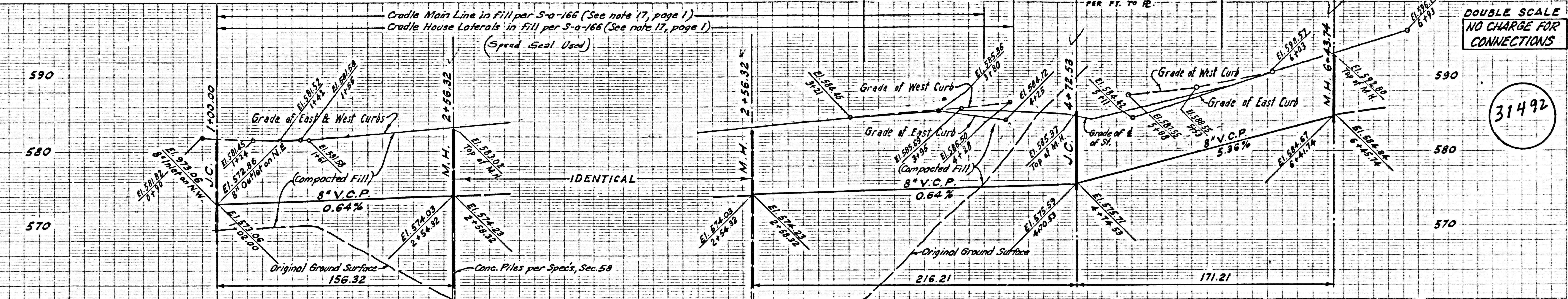
31489





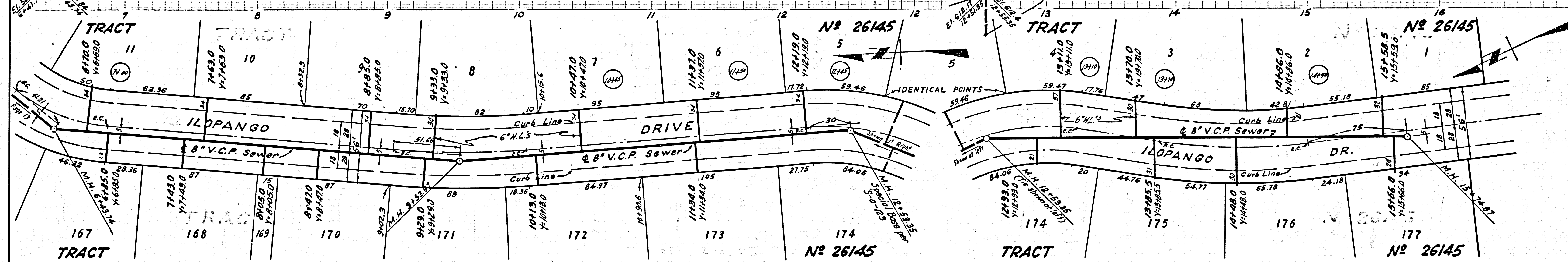
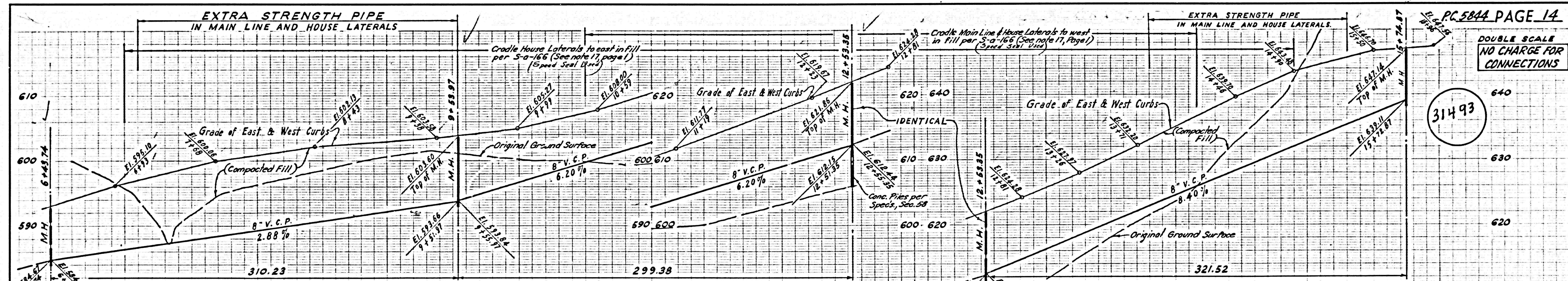
DOUBLE SCALE
NO CHARGE FOR
CONNECTIONS

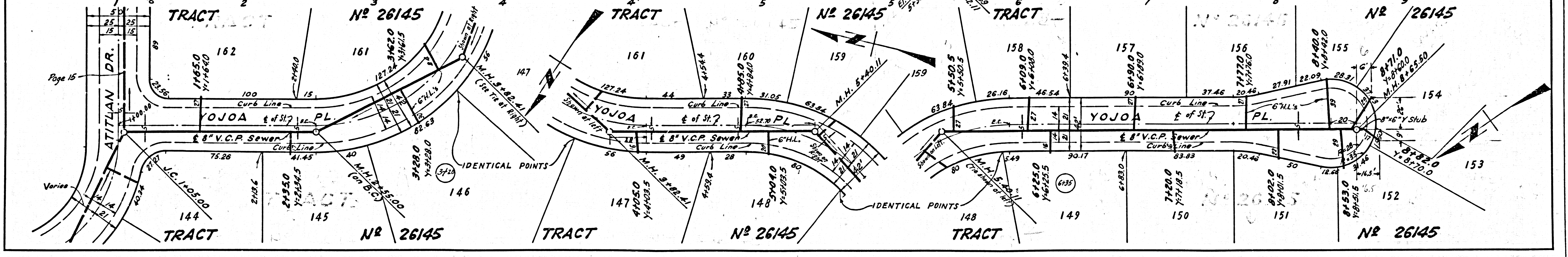
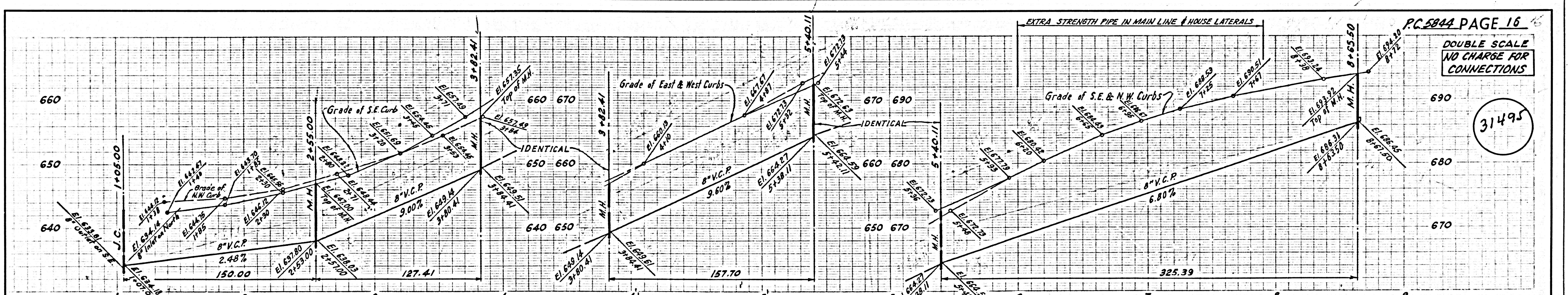
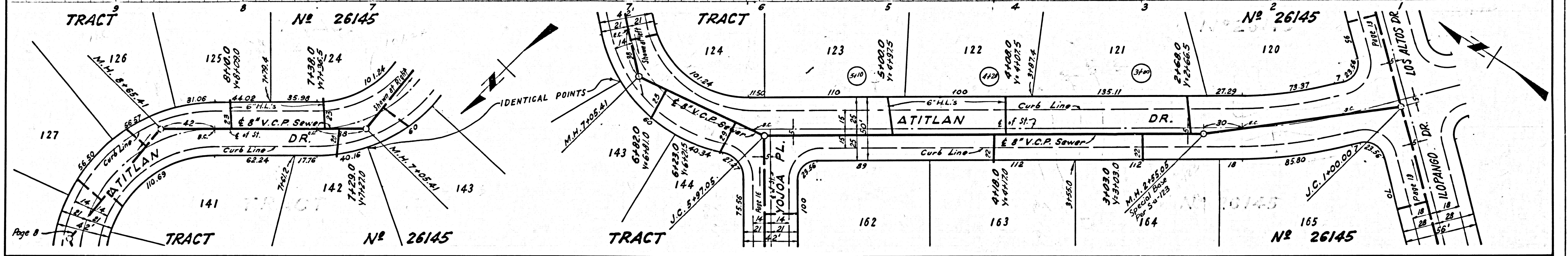
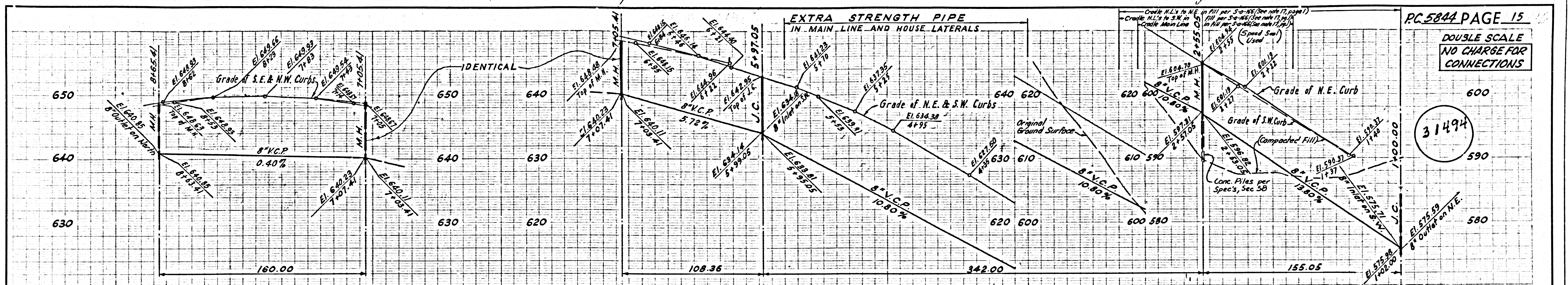
31492

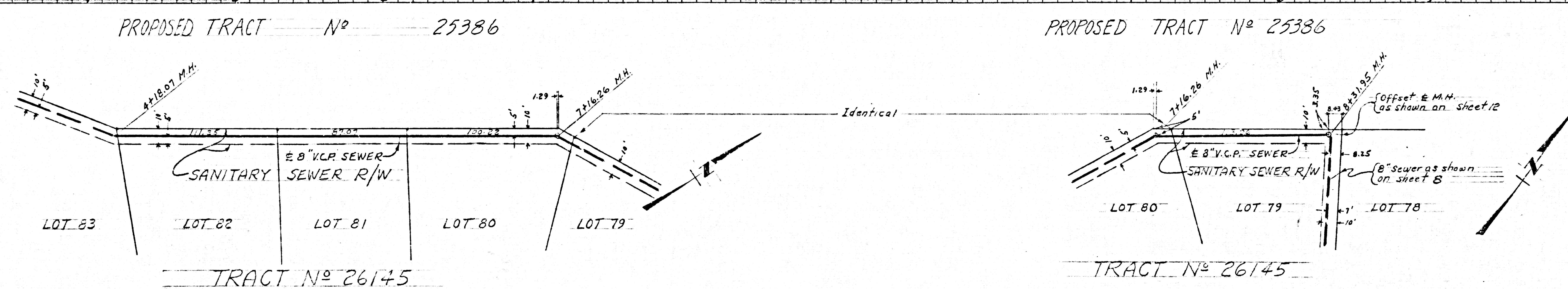
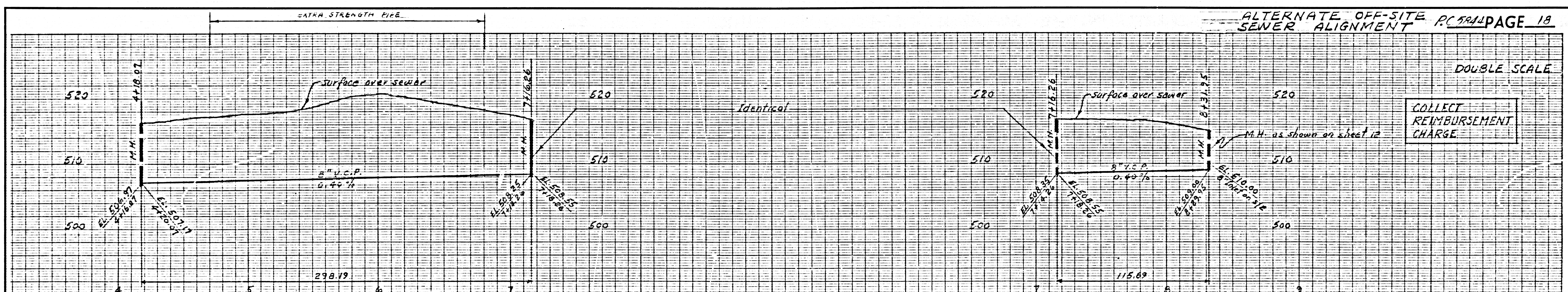
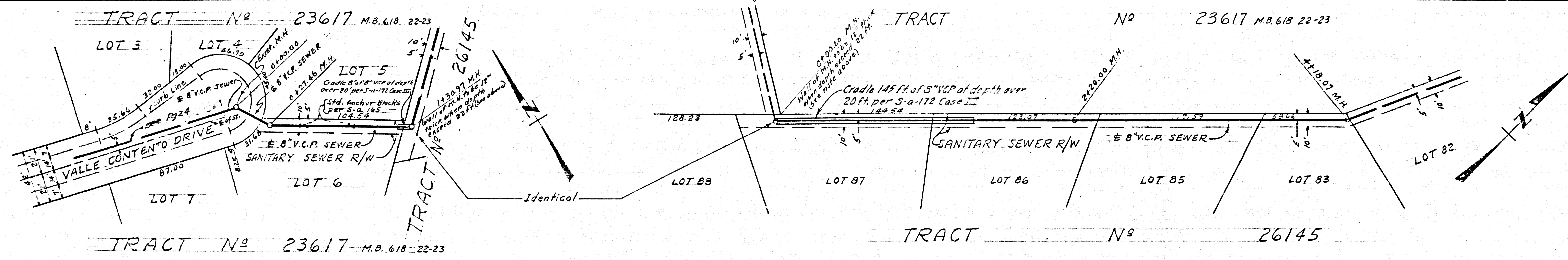
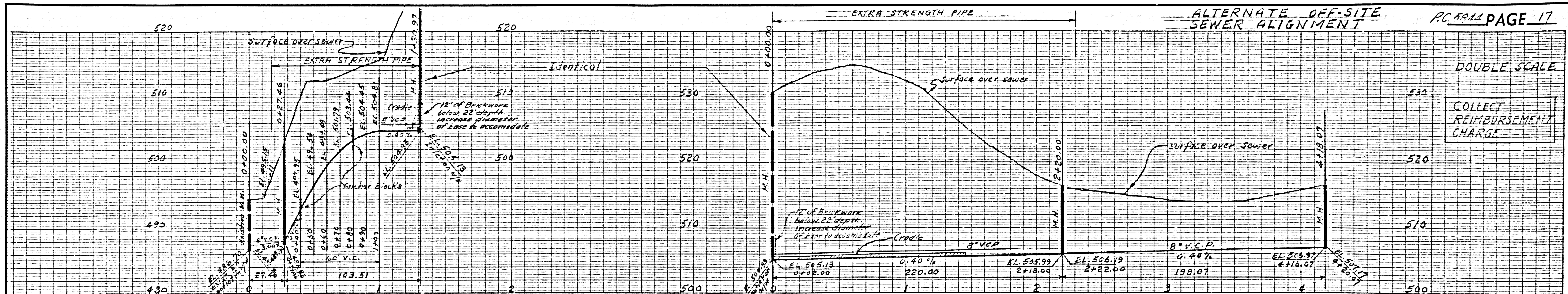


DOUBLE SCALE
NO CHARGE FOR
CONNECTIONS

31493



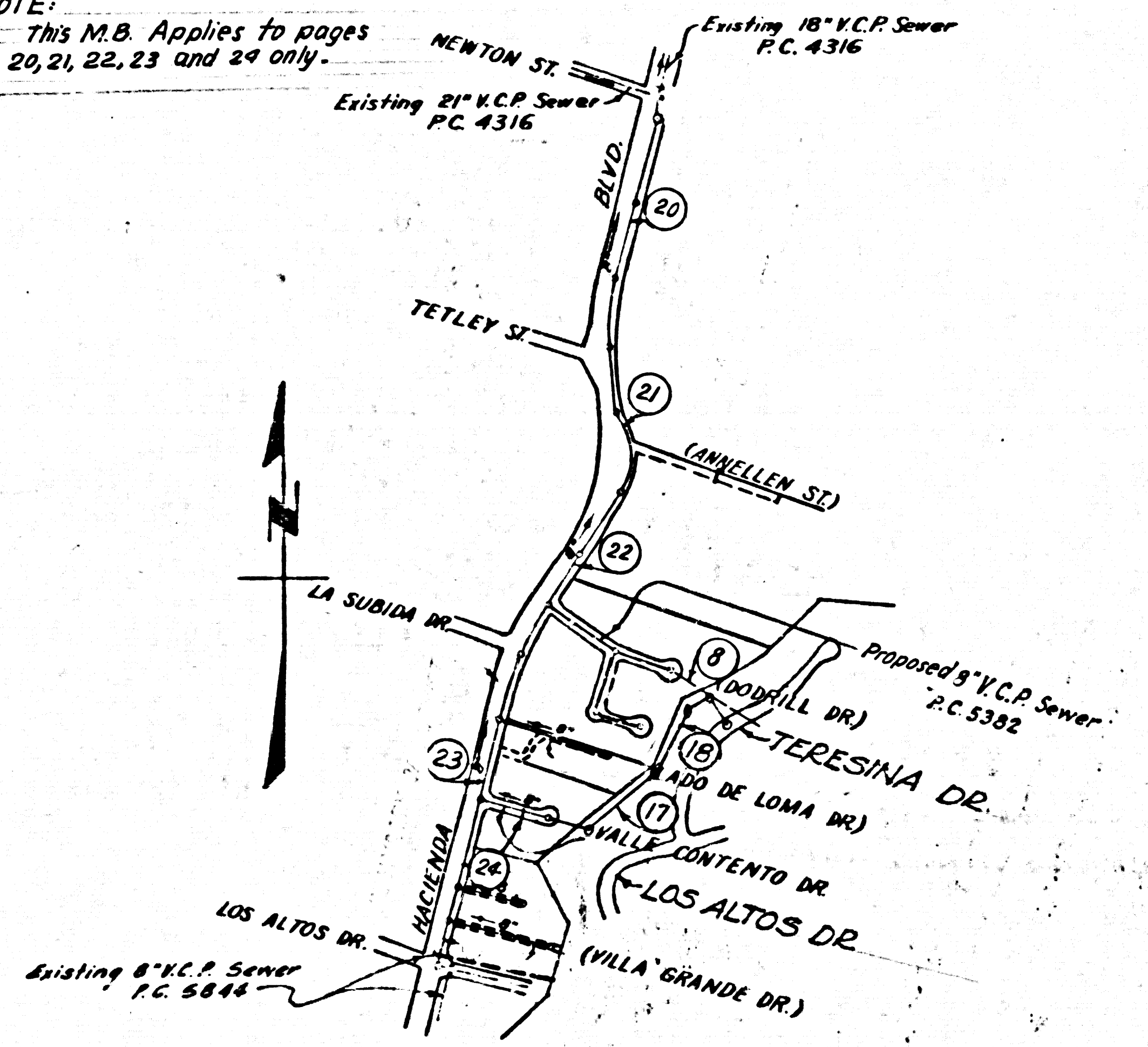




PLANS PREPARED BY
 AMCO ENGINEERS
 8844 W. OLYMPIC BLVD., D. H.
 J. M. Arroyo
 J. George Arroyo RE. 11467
 8-21-01

ELEV. = 416.542 (UNADJ.) F.B. 1982-114
B.M.T.F. - 282 HACIENDA BLVD. (E. SIDE)
140' S. OF NEWTON ST., SPK. IN CONC.
HEAD WALL, 1' N. OF S. END

NOTE:
THIS M.B. Applies to pages
17, 18, 19, 20, 21, 22, 23 and 24 only.

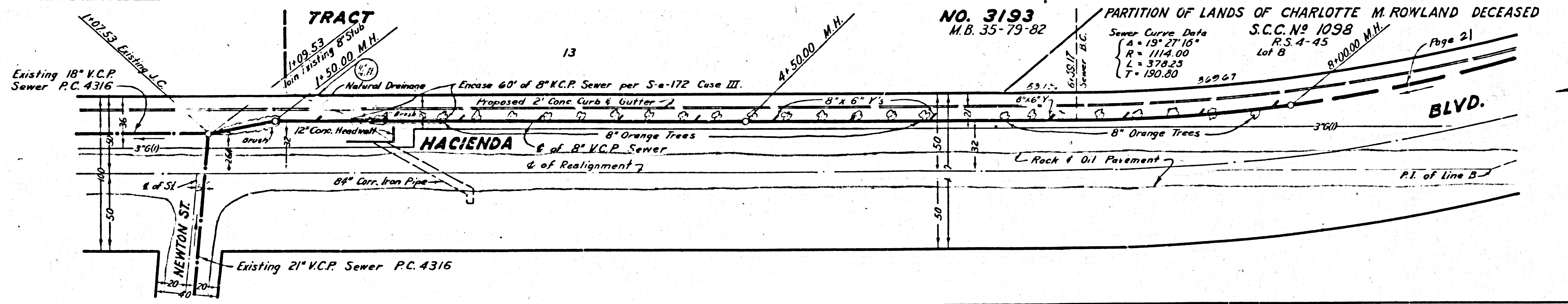
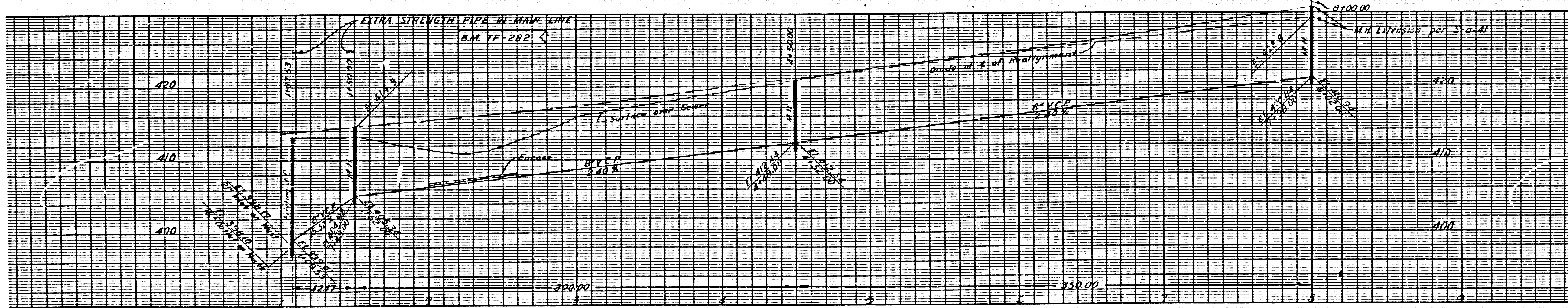


INDEX MAP
P.C. 5844 (For pages 17 to 24 inclusive)
HACIENDA BLVD.
Scale: 1" = 600'
Note: Figures in circles indicate page numbers.

THE CONTRACTOR SHALL START AND COMPLETE THE CONSTRUCTION OF SEWER ON HACIENDA BLVD. IN THE SHORTEST POSSIBLE TIME. THE CONTRACTOR SHALL HAVE THE PRIVILEGE OF STARTING OTHER WORK ON THIS PROJECT IF THAT WORK DOES NOT INTERFERE WITH OR DELAY THE WORK ON HACIENDA BLVD.

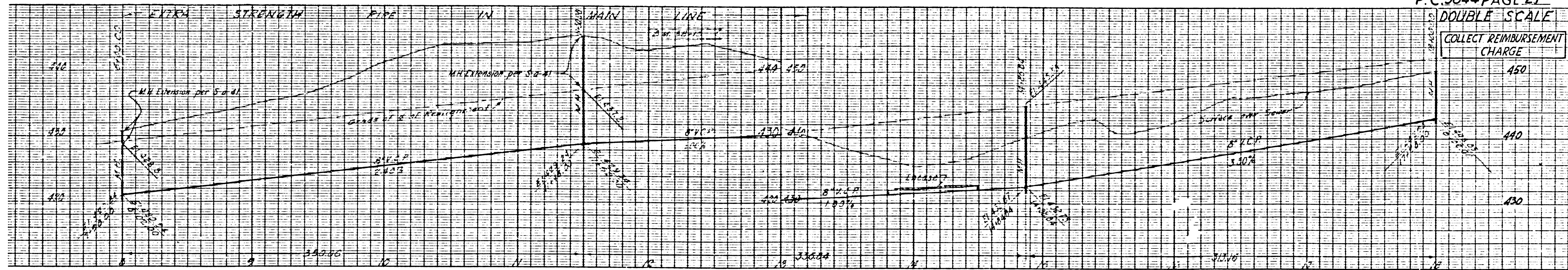
AMCO ENGINEERS
8844 W. OLYMPIC BLVD.
BEVERLY HILLS, CALIF.

By: J. Mye Arajo 8-22-67
REG. C.E. NO. 11467

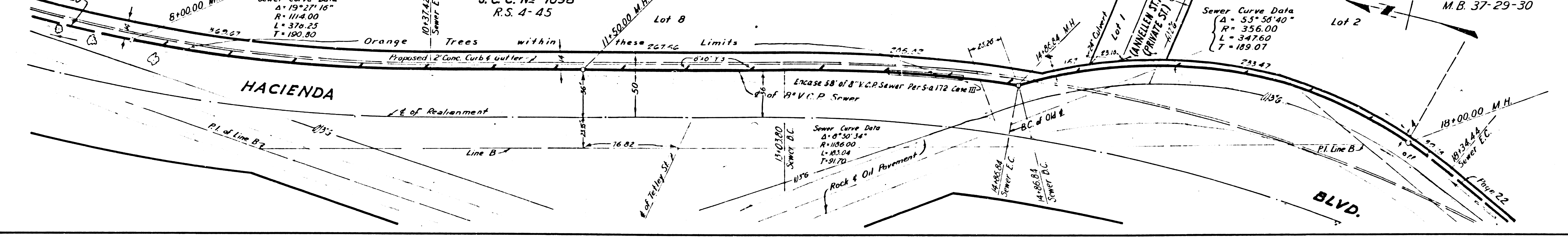


DOUBLE SCALE

COLLECT REIMBURSEMENT CHARGE



PARTITION OF LANDS OF CHARLOTTE M. ROWLAND DECEASED

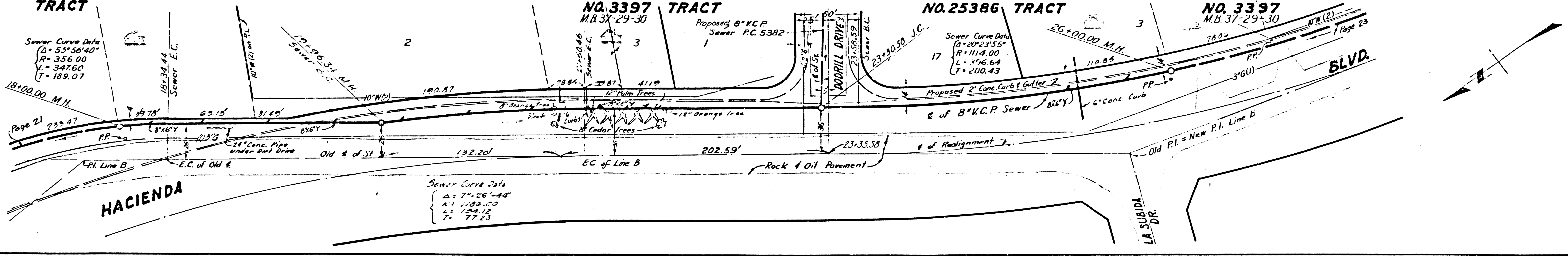
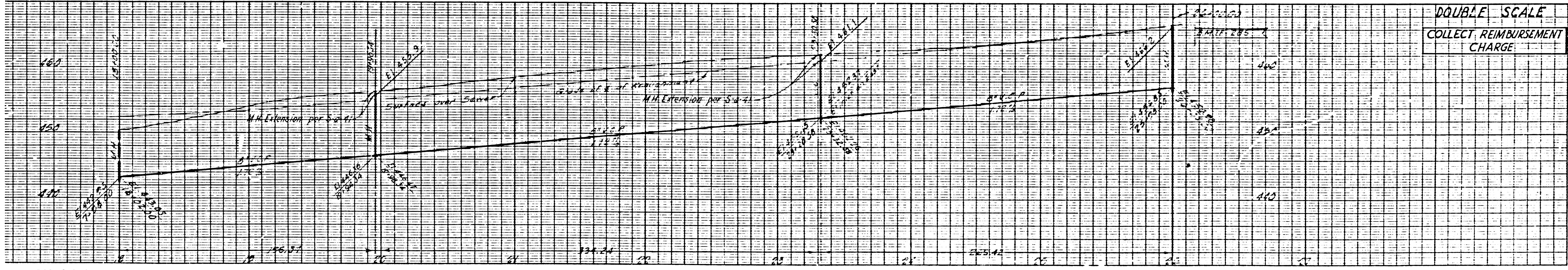


F.B. 370 { & Page 118-119
X- Sect. Page 219-225

F.B. 1982 { & Page 132-133
X- Sect. Page 171-172

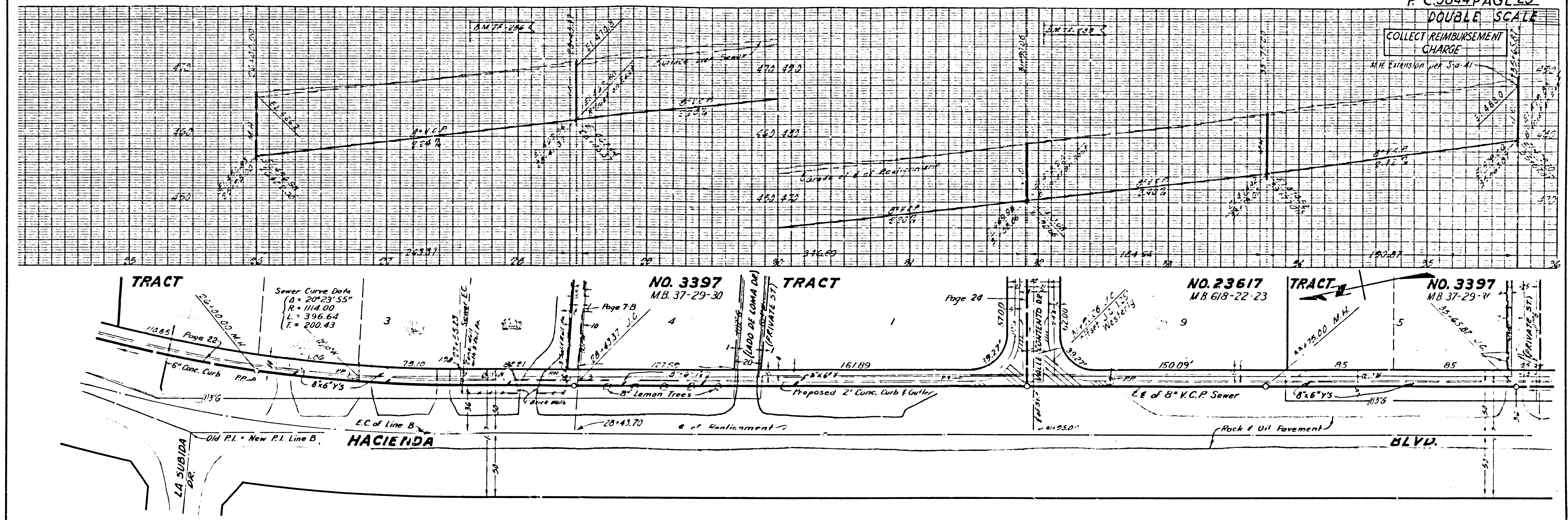
DOUBLE SCALE

COLLECT REIMBURSEMENT CHARGE

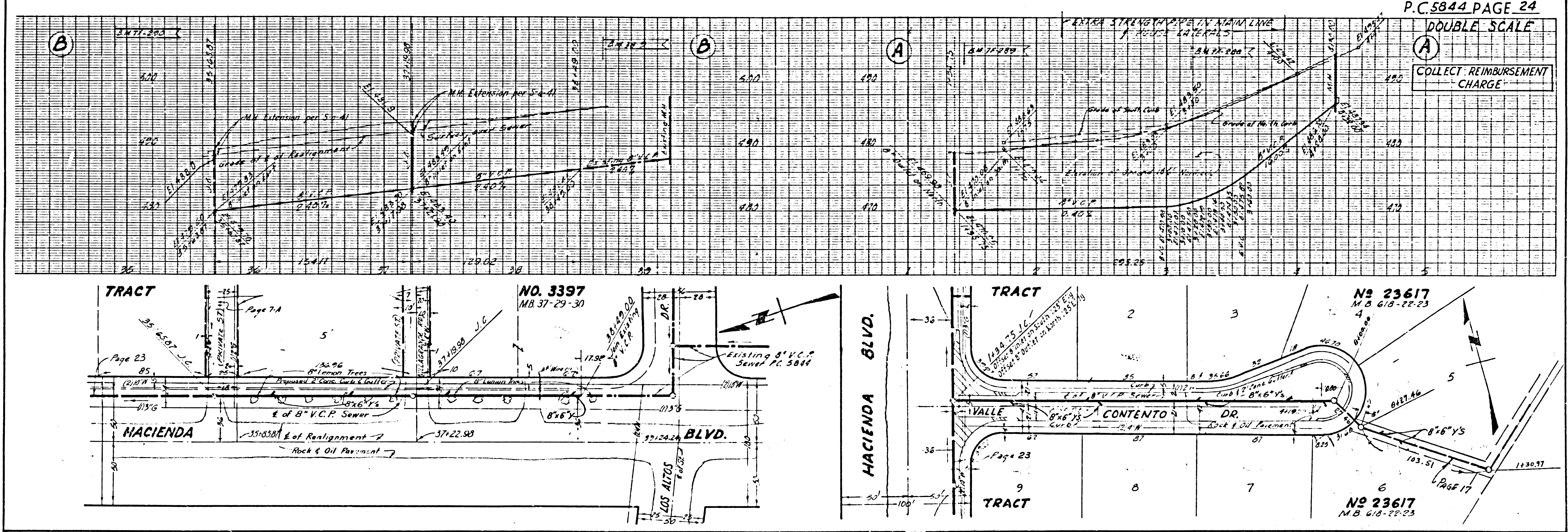


F.B. 1982 { & Pages 131 & 132
X- Sect. Pages 171-174

F.B. 370 { & Page 118
X- Sect. Pages 187-189



F.B. 1982 { E - Pages 124, 127, 129 & 131
Topo - Pages 174 & 177
X-section - Pages 189 & 193



F.B. 1982 { E - Pages 123 & 124
Topo - Pages 177 & 178
X-section - Pages 193 & 194

F.B. 1982 { E - Page 181, 182
Topo - Page 180, 183
X-section - Page 184, 186