

ALTADENA BLDG. DIST. NO. 3

PROFILE ALIGNMENT AND GRADE OF P.C. 5847

SANITARY SEWERS PAGE 1

TO BE CONSTRUCTED IN J.N. 0355.72

R/W NORTHEAST OF DEVONWOOD RD.

PRIVATE CONTRACT NO. 5847

W.S. 88

1 SHEET : 2 PAGES

SCALE: VERT. 1"=20' APRIL, 1961

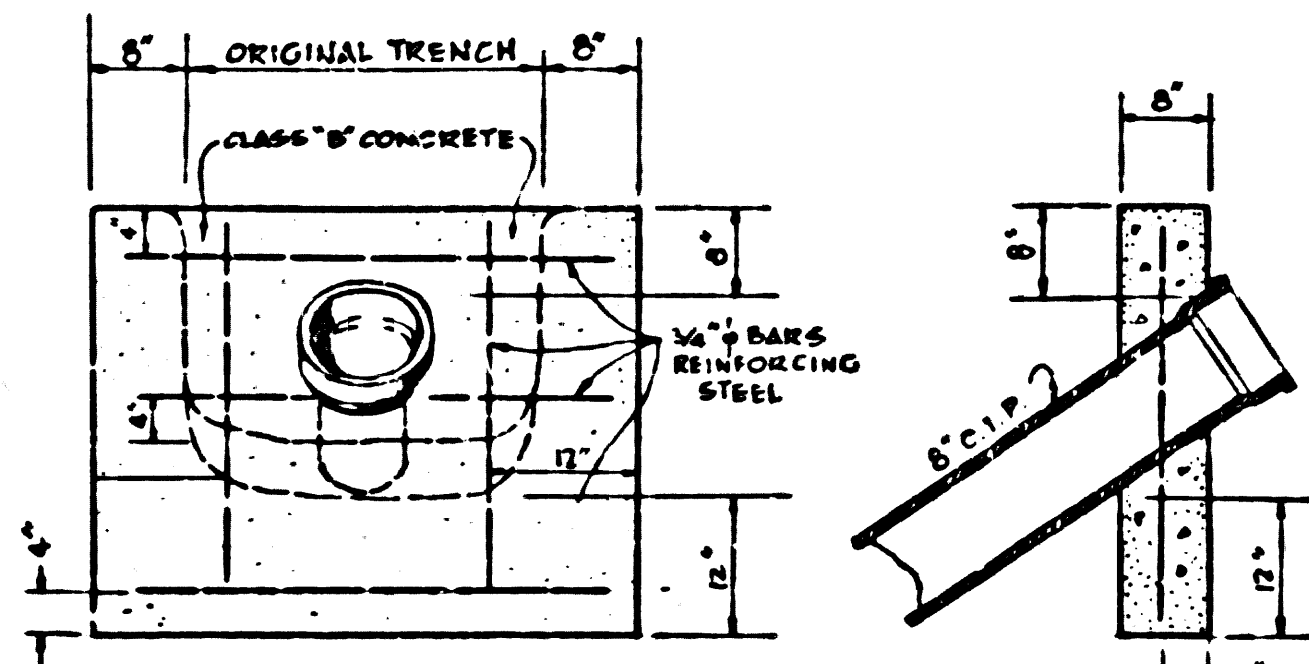
PREPARED IN THE OFFICES OF

LEONARD H. GOWDY

REG. C. E. NO. 4823

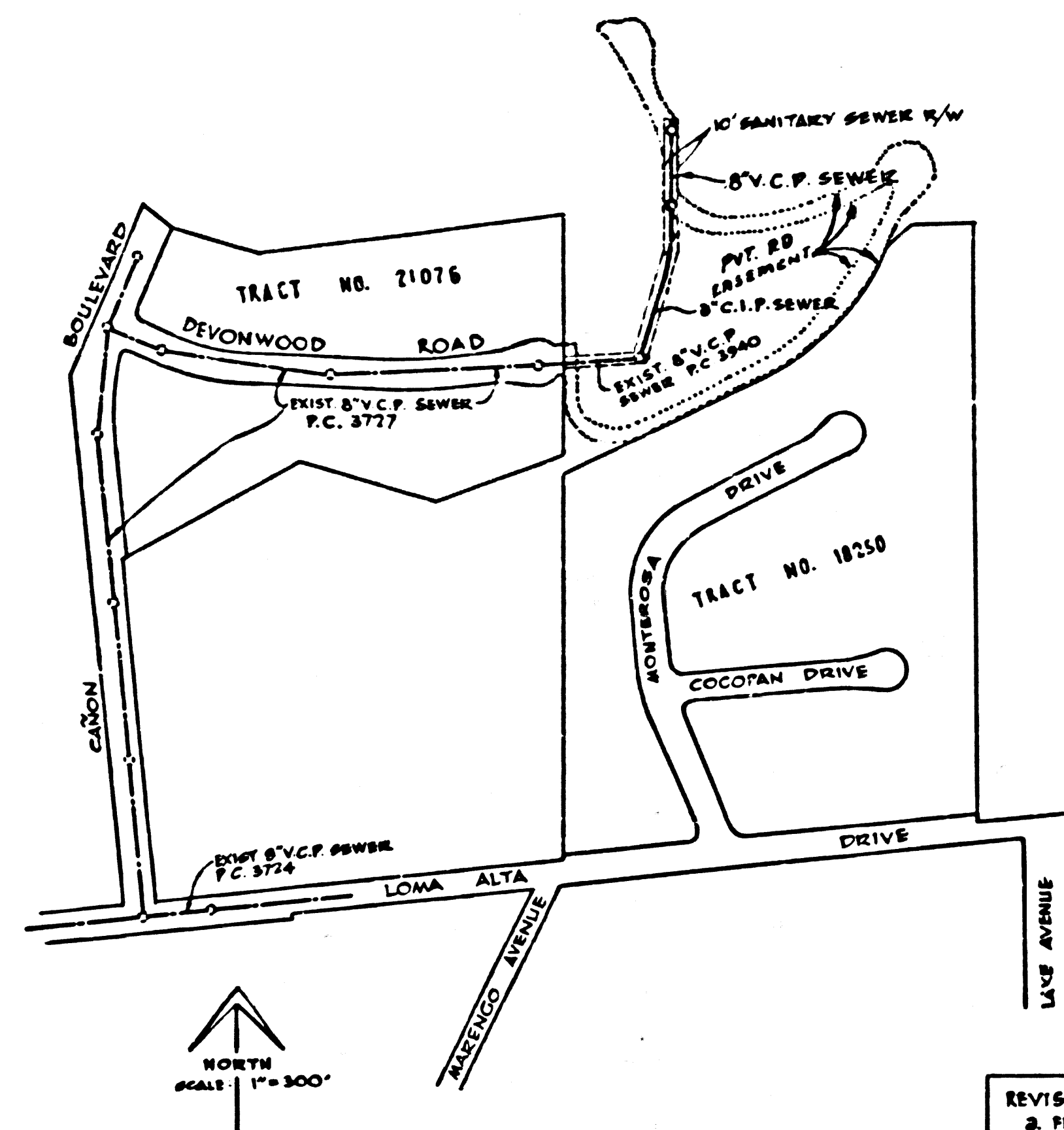
FOR LEGEND SEE PLAN NO. S-A-64

31597



ELEVATION SECTION
CONCRETE ANCHOR BLOCK
SCALE: 1"=1'-0"
PLACE BLOCKS EVERY OTHER JOINT

NOTE: 8" C.I.P. SEWER TO BE CONSTRUCTED WITH NOT OVER 18 FT. PIPE LENGTHS FROM STA. 0+00 TO STA. 2+00 WITH "TYTON" JOINTS. PRIOR TO BACKFILLING TRENCH, REDWOOD BAFFLE BOARDS WILL BE PLACED AS PER DETAIL ON PAGE 2, AND SLOPES WILL BE PLANTED WITH AN APPROVED PERENNIAL 1" MIN. EACH SIDE OF TRENCH



INDEX MAP
P.C. 5847

REVISION:
1. FROM ROUND SCALE TO SPECIAL SCALE
2. ALLOW REFLECTIONS IN PIPE JOINTS
3. CHANGED TRENCH PROTECTION APPROVED
4. APPROVED BY SAN GABRIEL VALLEY REGIONAL ENGINEER

NO CONNECTIONS FOR THE DISPOSAL OF INDUSTRIAL WASTES SHALL BE MADE TO SEWERS SHOWN ON THESE DRAWINGS WITHOUT WRITTEN PERMISSION FROM THE CHIEF ENGINEER AND GENERAL MANAGER OF THE COUNTY SANITATION DISTRICTS.

B.M. 10 (1095) ELEV. 1805.49
L.S.T. IN NORTH END OF CONC. SLAB OF CONCRETE & STONE BENCH 50' EAST OF THE 4" OF NORTH LAKE AVENUE PRODUCED & 10' NORTH OF THE 4" OF EAST LOMA ALTA DRIVE, LOCATED PASADENA QUAD. 1953

NO CHARGE FOR CONNECTIONS
A. J. Robertson, E.I.

NOTE: GRADES TO WHICH THIS IMPROVEMENT IS TO BE CONSTRUCTED ARE SHOWN ON PLANS AND PROFILES. GRADE POINTS FOR TOP OF CURBS, CENTER LINE OF STREETS, OR CENTER LINE OF ALLEYS ARE SHOWN BY CIRCLES ON PROFILES. AT ALL POINTS BETWEEN DESIGNATED POINTS THE GRADE SHALL BE ESTABLISHED SO AS TO CONFORM TO A STRAIGHT LINE DRAWN BETWEEN SAID DESIGNATED POINTS. ELEVATIONS ARE IN FEET ABOVE U.S.C. & G.S. SEA LEVEL DATUM OF 1929. THIS DRAWING AND THE DATA HEREON ARE HEREBY MADE A PART OF THE SPECIFICATIONS. WORK SHALL BE CONSTRUCTED ACCORDING TO SPECIFICATIONS ON FILE IN THE OFFICE OF THE COUNTY ENGINEER AND SHALL BE PROSECUTED ONLY IN THE PRESENCE OF THE COUNTY ENGINEER. BEFORE WORK CAN BE STARTED, THE CONTRACTOR MUST OBTAIN A PERMIT TO EXCAVATE IN COUNTY STREETS FROM THE L.A. COUNTY ROAD DEPT., DISTRICT OFFICE NO. 2 AND PAY A FEE TO THE COUNTY ENGINEER ROOM 3100 OF ENGR'S BLDG., 1018 W. SECOND ST., SUFFICIENT TO COVER THE COST OF CONSTRUCTION INSPECTION AND RECORD PLANS. APPROVAL OF THIS PLAN BY THE COUNTY OF LOS ANGELES DOES NOT CONSTITUTE A REPRESENTATION AS TO THE ACCURACY OF THE LOCATION OF OR THE EXISTENCE OR NON-EXISTENCE OF ANY UNDERGROUND UTILITY PIPE, OR STRUCTURE WITHIN THE LIMITS OF THIS PROJECT. THIS NOTE APPLIES TO ALL PAGES. IF WORK IS TO BE DONE IN A STATE HIGHWAY, A PERMIT MUST BE OBTAINED FROM THE STATE OF CALIFORNIA, DIVISION OF HIGHWAYS, 120 SOUTH SPRING STREET.

COUNTY OF LOS ANGELES, CALIFORNIA

APPROVED, JOHN A. LAMBIE, COUNTY ENGINEER

APPROVED, J. D. MCKNIGHT, CHIEF ENGINEER

BY: [Signature] ASS. SANITATION ENGINEER

BY: [Signature] OFFICE ENGINEER

CHECKED BY: [Signature] OFFICE OF COUNTY ENGINEER, REG. C. E. NO. 9436

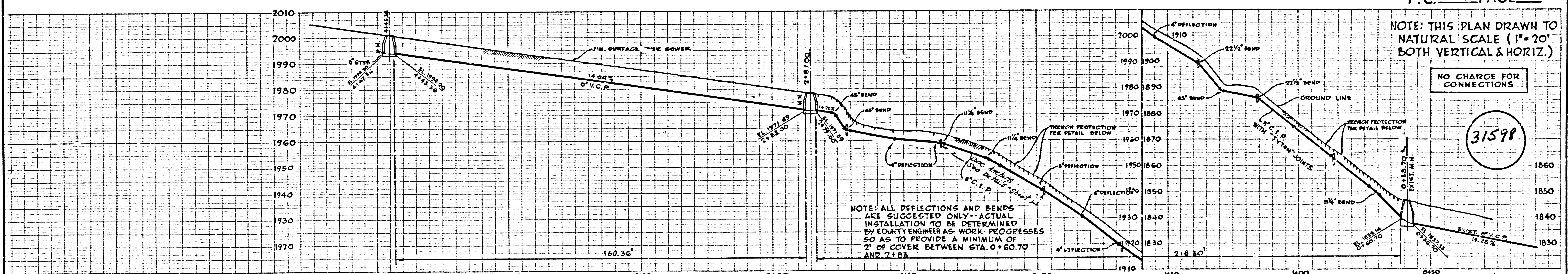
SUBMITTED BY: [Signature] SAN GABRIEL VALLEY REGIONAL ENGINEER

P.C. 5847 PAGE 2

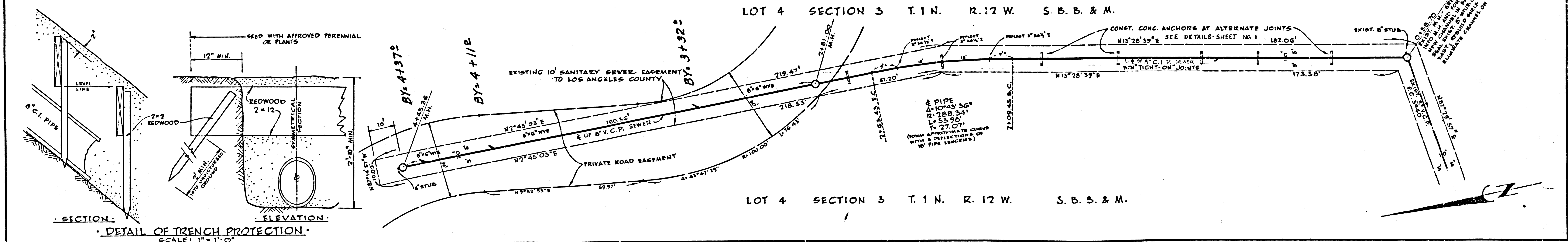
NOTE: THIS PLAN DRAWN TO NATURAL SCALE (1"=20' BOTH VERTICAL & HORIZ.)

NO CHARGE FOR CONNECTIONS

31598



LOT 4 SECTION 3 T.1N. R.12W. S.B.B. & M.



LOT 4 SECTION 3 T.1N. R.12W. S.B.B. & M.