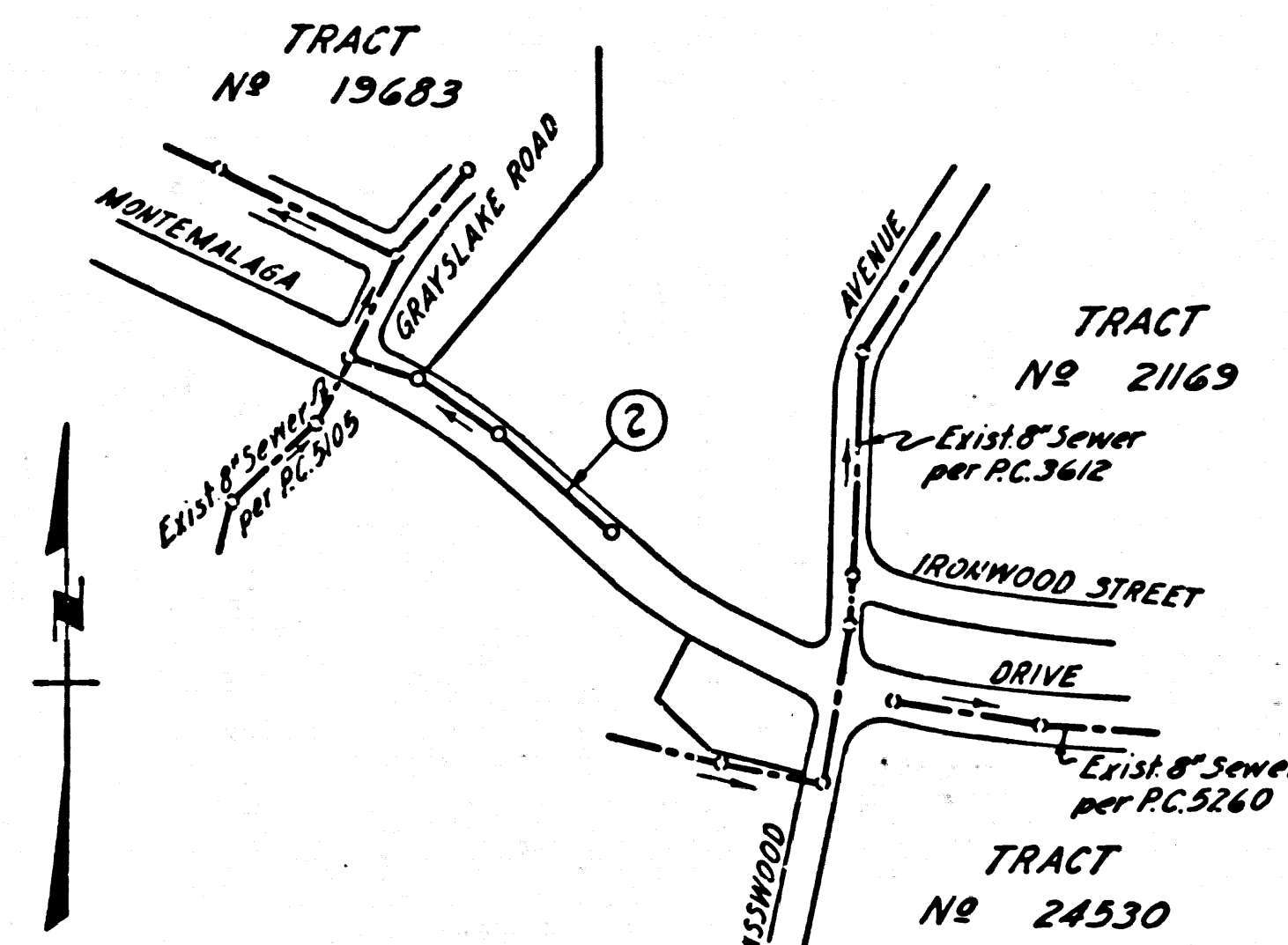


County Surveyors B.M. U.S.C.G.S. Std. Disc
 Stamped Q-786-1946, set flush with
 ground 45.2' North of E of Palos Verdes
 Drive North 47.4' East of E of Narbonne
 Ave. Elev. 355.518

County Surveyor B.M. 36-2, County
 Precise Survey 1953 adj. Elev. 355.583
 Add 0.065 to all elev's. shown hereon
 to agree with 1953 adjustment.



INDEX MAP
 MONTEMALAGA DRIVE
 Scale: 1" = 400'
 P.C. 5853

NO CONNECTIONS FOR THE DISPOSAL OF
 INDUSTRIAL WASTES SHALL BE MADE TO
 SEWERS SHOWN ON THESE DRAWINGS
 WITHOUT WRITTEN PERMISSION FROM THE
 CHIEF ENGINEER AND GENERAL MANAGER
 OF THE COUNTY SANITATION DISTRICTS.

NO CHARGE FOR
 CONNECTIONS
S. Carter 5-21-61

DOUBLE SCALE
 LOMITA BLDG. DIST. NO. 71

PROFILE ALIGNMENT AND GRADE OF P.C. 5853
 SANITARY SEWERS PAGE 1
 TO BE CONSTRUCTED IN J.N. 0355.76

MONTEMALAGA DRIVE
 PRIVATE CONTRACT NO. 5853

W.S. 27
 1 SHEET, 2 PAGES
 SCALE: VERT. 1" = 5' HORIZ. 1" = 40'
 MARCH, 1961
 PREPARED IN THE OFFICES OF
 ENGINEERING SERVICE CORPORATION
 BY: *C.F. Young*
 REG. C. E. NO. 3822
 FOR LEGEND SEE PLAN NO. S-A-64

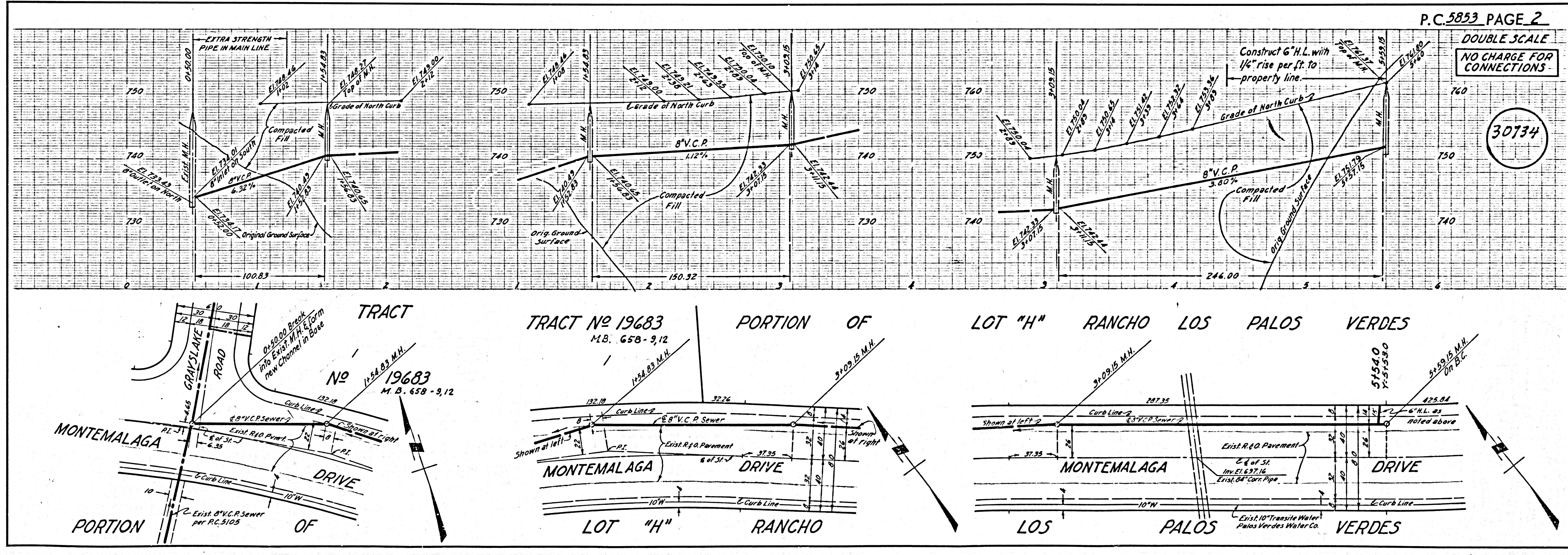
- NOTES:
- PROVIDE STAKES ON THE PROPERTY LINE OR PROPERTY LINES PRODUCED AT RIGHT ANGLES TO THE SEWER LINE AT THE CENTER LINE OF EACH MANHOLE.
 - NO REPRESENTATIVE OF THE COUNTY ENGINEER WILL SURVEY OR LAYOUT ANY PORTION OF THE WORK.
 - THE OWNER OR HIS AUTHORIZED REPRESENTATIVE SHALL FURNISH THE COUNTY ENGINEER WITH GRADE SHEETS AND STATIONING FOR ALL HOUSE LATERALS AND BRANCHES AND SHALL PROVIDE STAKES FOR THEM AT THEIR PROPER LOCATIONS WITH STATIONING PLAINLY MARKED. ANY CHANGE IN LOCATION SHALL BE REQUESTED IN WRITING BY THE OWNER OR HIS REPRESENTATIVE.
 - NO REVISIONS SHALL BE MADE IN THESE PLANS WITHOUT THE APPROVAL OF THE COUNTY ENGINEER.
 - USE STANDARD MANHOLE FRAMES AND COVERS, 5'-4"-17".
 - USE STANDARD STRENGTH PIPE.
 - USE CEMENT MORTAR OR "TRIPLE-LOCK" OR "SPEED-SEAL" FOR ALL M.C.R. JOINTS PER SPEC'S. SEC. 24 & 44.
 - RESURFACE ALL TRENCH WITHIN PAVED AREA TO MEET L. A. COUNTY ROAD DEPT., OR CALIF. STATE HIGHWAY DEPT. REQUIREMENTS IN ACCORDANCE WITH PERMITS.
 - ENCASE FOUR FEET OF SEWER AT POINTS OF INTERFERENCE WITH POLES, S.A-119.
 - HOUSE LATERALS TO BE CONSTRUCTED WITH 1/4" RISE PER FT. TO PROPERTY LINE.
 - ALL STRUCTURES SHALL BE BRICK SEWER STRUCTURES, S-A-104, EXCEPT AS NOTED.
 - FOR ALLOWABLE LEAKAGE TEST USE FORMULA NO. 1 SPEC'S., SEC. 54.
 - SPECIFICATIONS DATED OCT. 10, 1960 APPLY IN THE CONSTRUCTION OF THIS PROJECT.
 - THE PRIVATE ENGINEER IS TO FURNISH THE HOUSE LATERAL WITHIN THE PROPERTY LINE BELOW THE TOP OF CURVE ELEVATION FOR EACH HOUSE LATERAL ON THE GRADE SHEET.
 - THE CONTRACTOR SHALL NOTIFY THE CONSTRUCTION DIVISION BY TELEPHONE, MADISON 9-4747, EXT. 8180, AT LEAST 24 HOURS BEFORE STARTING ANY WORK UNDER THIS CONTRACT.
 - JOINT COMPOUND MUST BE SUBSTITUTED FOR CEMENT MORTAR FOR ALL JOINTS IN FILLED AREAS.

ENGINEERING SERVICE CORPORATION
 1127 W. WASHINGTON BLVD. RI. 9-7281
 LOS ANGELES 15, CALIF.

REVISIONS	TRACED BY <u>W.B.</u>				
	DES'G'D BY <u>C.M.R.</u>				
	CK'D BY				
	SUBMITTED				
SUB STRUCTURES OK'D					
W. D. NO.	DWG. NO.	DATE	SCALE	L. B.	P. B.
6621-178					

NOTE:
 GRADES TO WHICH THIS IMPROVEMENT IS TO BE CONSTRUCTED ARE SHOWN ON PLANS AND PROFILE. GRADE POINTS FOR TOP OF CURBS, CENTER LINE OF STREETS, OR CENTER LINE OF ALLEYS ARE SHOWN BY CIRCLES ON PROFILE. AT ALL POINTS BETWEEN DESIGNATED POINTS THE GRADE SHALL BE ESTABLISHED SO AS TO CONFORM TO A STRAIGHT LINE DRAWN BETWEEN SAID DESIGNATED POINTS.
 ELEVATIONS ARE IN FEET ABOVE U.S.C. & G.S. SEA LEVEL DATUM OF 1929.
 THIS DRAWING AND THE DATA HEREON ARE HEREBY MADE A PART OF THE SPECIFICATIONS.
 WORK SHALL BE CONSTRUCTED ACCORDING TO SPECIFICATIONS ON FILE IN THE OFFICE OF THE COUNTY ENGINEER AND SHALL BE PROSECUTED ONLY IN THE PRESENCE OF THE COUNTY ENGINEER.
 BEFORE WORK CAN BE STARTED, THE CONTRACTOR MUST OBTAIN A PERMIT TO EXCAVATE IN COUNTY STREETS FROM THE L. A. COUNTY ROAD DEPT., STREET OFFICE 468 AND PAY A FEE TO COUNTY ENGINEER, ROOM 310, 400 N. 240 STREET, COUNTY ENG. BLDG., SUFFICIENT TO COVER THE COST OF CONSTRUCTION INSPECTION AND RECORD PLANS.
 APPROVAL OF THIS PLAN BY THE COUNTY OF LOS ANGELES DOES NOT CONSTITUTE A REPRESENTATION AS TO THE ACCURACY OF THE LOCATION OF OR THE EXISTENCE OR NON-EXISTENCE OF ANY UNDERGROUND UTILITY PIPE, OR STRUCTURE WITHIN THE LIMITS OF THIS PROJECT. THIS NOTE APPLIES TO ALL PAGES.
 IF WORK IS TO BE DONE IN A STATE HIGHWAY, A PERMIT MUST BE OBTAINED FROM THE STATE OF CALIFORNIA, DIVISION OF HIGHWAYS, 126 SOUTH SPRING STREET.

COUNTY OF LOS ANGELES, CALIFORNIA
 APPROVED, JOHN A. LAMBIE, COUNTY ENGINEER
 APPROVED, C.R. COMPTON, CHIEF ENGINEER
 BY: *C.F. Young* ASST. SANITATION ENGINEER
 BY: *M. Williams* OFFICE ENGINEER
 CHECKED BY: *R. O. ...*
 OFFICE OF COUNTY ENGINEER, REG. C. E. NO. 9456
 SUBMITTED BY: *Jack C. Lewis* PALOS VERDES-CENTINELA VALLEY REGIONAL ENGINEER



P.C. 5853 PAGE 2

DOUBLE SCALE
 NO CHARGE FOR CONNECTIONS

30734