

INDEX MAP
TRACT NO. 25903
P.C. 5860 SCALE: 1" = 200'

S.M. S.G. 1050 3/4" x 1" R. 2" dia. 295' x Wly. of
Gallio Ave. & 50' x Nly. & Pathfinder
(Offerbein Quad) ELEV. 634.83G (1955)
(Approx. 1000' sly of Aguirre St.)

REVISION: Page 4, Revise Sewer Grade Between
J.C. 0100 & J.C. 3120.32 to construct 100 Vertical
Curve. Page 5A, Added H.L. on E. Side Gallio Ave.
& 2116 on V (2112 on H).
2-1-56 W.C. Reinhardt
DATE: APPROVED

PUENTE BLDG. DIST. NO. 2

- NOTES:
1. PROVIDE STAKES ON THE PROPERTY LINE OR PROPERTY LINES PRODUCED AT RIGHT ANGLES TO THE SEWER LINE AT THE CENTER LINE OF EACH MANHOLE.
 2. NO REPRESENTATIVE OF THE COUNTY ENGINEER WILL SURVEY OR LAY OUT ANY PORTION OF THE WORK.
 3. THE OWNER OR HIS AUTHORIZED REPRESENTATIVE SHALL FURNISH THE COUNTY ENGINEER WITH GRADE SHEETS AND STATIONING FOR ALL HOUSE LATERALS AND Y BRANCHES AND SHALL PROVIDE STAKES FOR THEM AT THEIR PROPER LOCATIONS WITH STATIONING PLAINLY MARKED. ANY CHANGE IN LOCATION SHALL BE REQUESTED IN WRITING BY THE OWNER OR HIS REPRESENTATIVE.
 4. THE PRIVATE ENGINEER SHALL FURNISH THE HOUSE LATERAL DEPTH AT THE PROPERTY LINE BELOW THE TOP OF CURB ELEVATION FOR EACH HOUSE LATERAL ON THE GRADE SHEET.
 5. NO REVISIONS SHALL BE MADE IN THESE PLANS WITHOUT THE APPROVAL OF THE COUNTY ENGINEER.
 6. USE STANDARD MANHOLE FRAMES AND COVERS, S-117.
 7. USE STANDARD STRENGTH PIPE EXCEPT AS NOTED.
 8. USE CEMENT MORTAR OR "WEDGE-LOCK" OR "SEED-SEAL" FOR ALL V.C.P. JOINTS PER SPECS. SECS. 16 & 40.
 9. RESURFACE ALL TRENCH WITHIN PAVED AREA TO MEET L.A. COUNTY ROAD DEPT. OR CALIF. STATE HIGHWAY REQUIREMENTS IN ACCORDANCE WITH PERMITS.
 10. ENCASE FOUR FEET OF SEWER AT POINTS OF INTERFERENCE WITH POLES, CASE III, S-112.
 11. HOUSE LATERALS TO BE CONSTRUCTED WITH INVERTS AT PROPERTY LINE 2 FEET BELOW CURB GRADE.
 12. ALL STRUCTURES SHALL BE BRICK SEWER STRUCTURES, S-104.
 13. FOR ALLOWABLE LEAKAGE TEST USE FORMULA NO. 1, SPECS. SEC. 54.
 14. MANHOLE TOPS IN UNIMPROVED RIGHTS-OF-WAY TO BE SIX INCHES ABOVE FINISHED GRADE.
 15. THE CONTRACTOR SHALL NOTIFY THE CONSTRUCTION DIVISION BY TELEPHONE, MADISON 9-4747, EX-1847 AT LEAST TWENTY-FOUR HOURS BEFORE STARTING ANY WORK UNDER THIS CONTRACT.
 16. STANDARD SPECIFICATIONS DATED OCT. 10, 1960 SHALL APPLY IN THE CONSTRUCTION OF THIS PROJECT.

COLLECT CHARGES AS INDICATED
7-27-61 Dinned 6-8-61

NO CONNECTIONS FOR THE DISPOSAL OF INDUSTRIAL WASTES SHALL BE MADE TO SEWERS SHOWN ON THESE DRAWINGS WITHOUT WRITTEN PERMISSION FROM THE CHIEF ENGINEER AND GENERAL MANAGER OF THE COUNTY SANITATION DISTRICTS.

TRACT NO. 25903

PRIVATE CONTRACT NO. 5860

W.S. 38
3 SHEETS; 6 PAGES
SCALE: VERT. 1" = 4'
HORIZ. 1" = 40' MARCH, 1961
PREPARED IN THE OFFICES OF
HANS C. THOMSEN

31026

By: *Hans C. Thomsen*
REG. C. E. NO. 8244

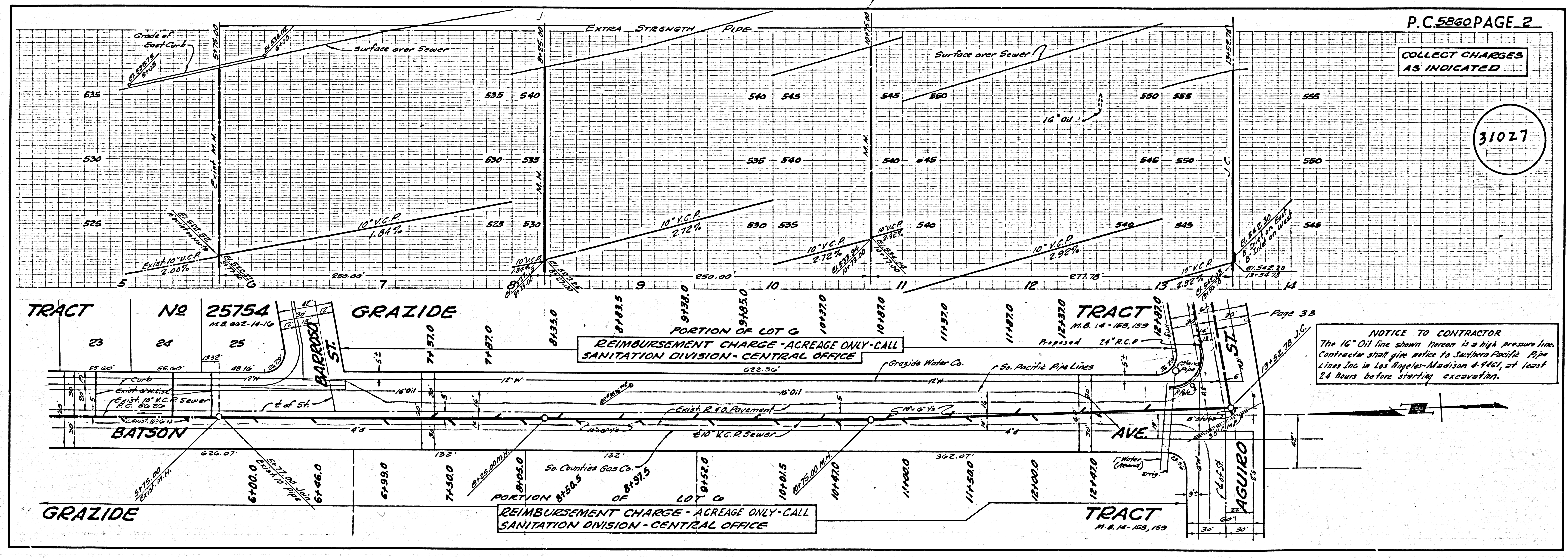
FOR LEGEND SEE PLAN NO. S-A-64

NOTE:
GRADES TO WHICH THIS IMPROVEMENT IS TO BE CONSTRUCTED ARE SHOWN ON PLANS AND PROFILES. GRADE POINTS FOR TOP OF CURB, CENTER LINE OF STREETS OR CENTER LINE OF ALLEYS ARE SHOWN BY CIRCLES ON PROFILES. AT ALL POINTS BETWEEN DESIGNATED POINTS THE GRADE SHALL BE ESTABLISHED SO AS TO CONFORM TO A STRAIGHT LINE DRAWN BETWEEN SAID DESIGNATED POINTS.
ELEVATIONS ARE IN FEET ABOVE U.S.C. & G.S. SEA LEVEL DATUM OF 1929.
THIS DRAWING AND THE DATA HEREON ARE HEREBY MADE A PART OF THE SPECIFICATIONS.
WORK SHALL BE CONSTRUCTED ACCORDING TO SPECIFICATIONS ON FILE IN THE OFFICE OF THE COUNTY ENGINEER AND SHALL BE PROSECUTED ONLY IN THE PRESENCE OF THE COUNTY ENGINEER.
BEFORE WORK CAN BE STARTED, THE CONTRACTOR MUST OBTAIN A PERMIT TO EXCAVATE IN COUNTY STREETS FROM THE L.A. COUNTY ROAD DEPT., DISTRICT OFFICE NO. 1 AND 2547 1/2 ST. TO THE COUNTY ENGINEER, ROOM 302 COUNTY SANITATION BUILDING, 148 1/2 S. 4th ST., SUFFICIENT TO COVER THE COST OF CONSTRUCTION INSPECTION AND RECORD PLANS.
APPROVAL OF THIS PLAN BY THE COUNTY OF LOS ANGELES DOES NOT CONSTITUTE A REPRESENTATION AS TO THE ACCURACY OF THE LOCATION OR THE EXISTENCE OR NON-EXISTENCE OF ANY UNDERGROUND UTILITY PIPE, OR STRUCTURE WITHIN THE LIMITS OF THIS PROJECT. THIS NOTE APPLIES TO ALL PAGES.
IF WORK IS TO BE DONE IN A STATE HIGHWAY, A PERMIT MUST BE OBTAINED FROM THE STATE OF CALIFORNIA, DIVISION OF HIGHWAYS, 120 SOUTH SPRING STREET.

COUNTY OF LOS ANGELES, CALIFORNIA

APPROVED, JOHN A. LAMBIE, COUNTY ENGINEER APPROVED, C.R. CAMPBELL, CHIEF ENGINEER
BY: *J.E. Smith* ASSANITATION ENGINEER BY: *H. Thomsen* OFFICE ENGINEER
CHECKED BY: *St. Onda* 6-9-61
OFFICE OF COUNTY ENGINEER, REG. C. E. NO. 9406

SUBMITTED BY: *W.C. Reinhardt* 6-8-61
SANITATION REGIONAL ENGINEER



COLLECT CHARGES AS INDICATED

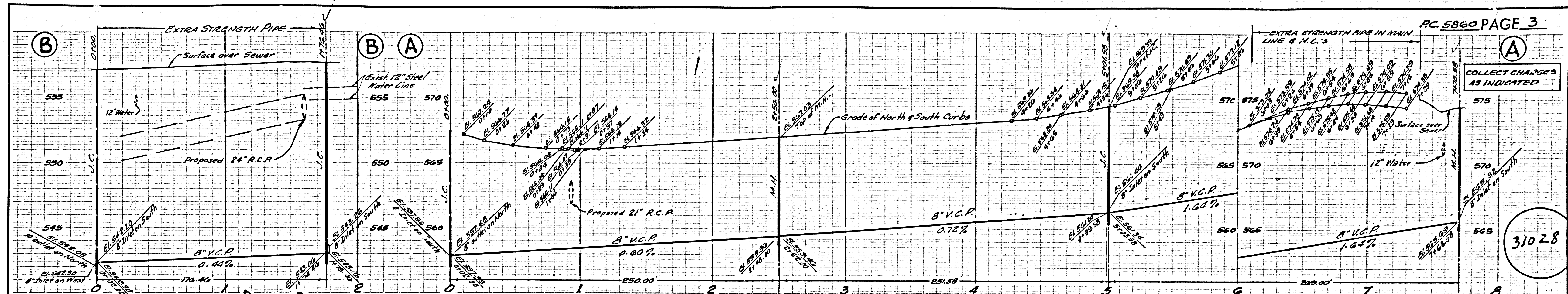
31027

NOTICE TO CONTRACTOR
The 16" Oil line shown hereon is a high pressure line. Contractor shall give notice to Southern Pacific Pipe Lines Inc. in Los Angeles-Madison 4-9461, at least 24 hours before starting excavation.

TRACT NO. 25903

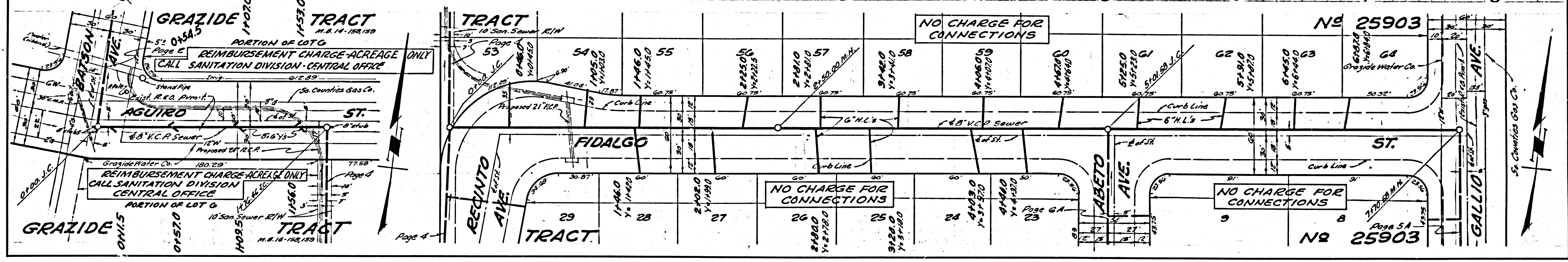
25903

5860



COLLECT CHARGES AS INDICATED

31028



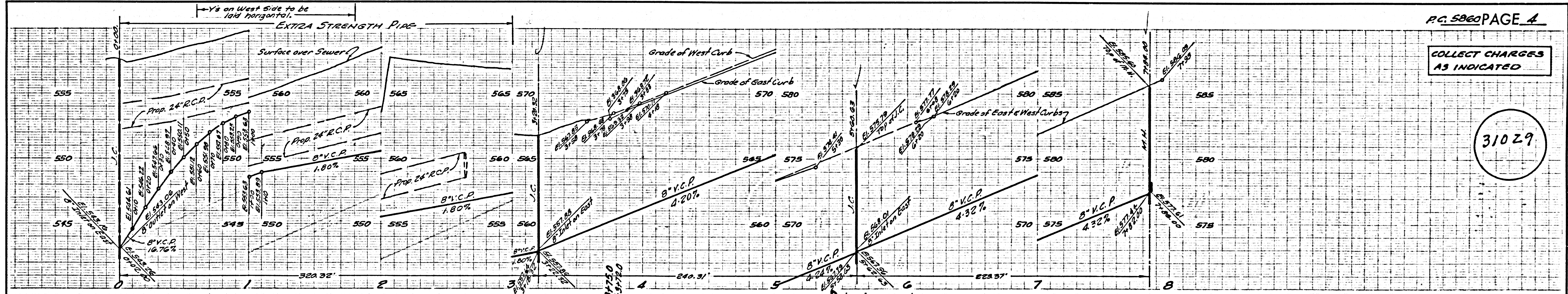
NO CHARGE FOR CONNECTIONS

NO 25903

NO CHARGE FOR CONNECTIONS

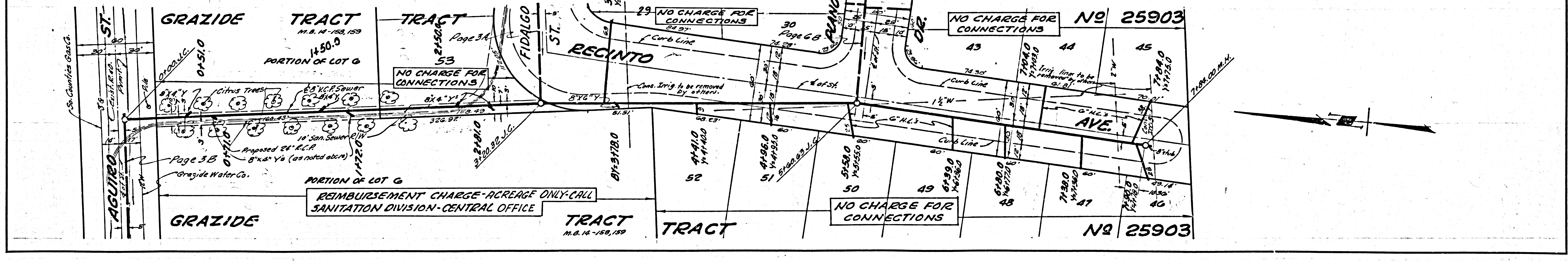
NO CHARGE FOR CONNECTIONS

NO 25903



COLLECT CHARGES AS INDICATED

31029



NO CHARGE FOR CONNECTIONS

NO CHARGE FOR CONNECTIONS

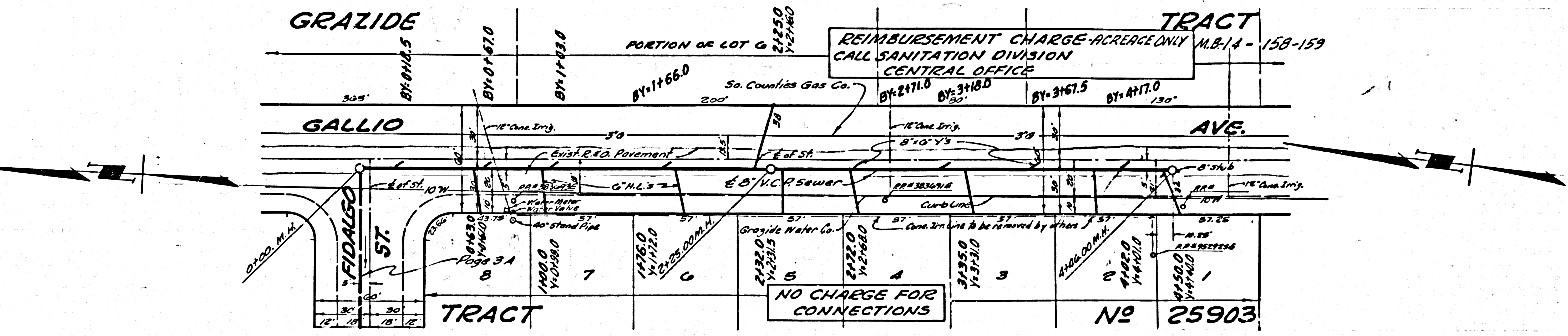
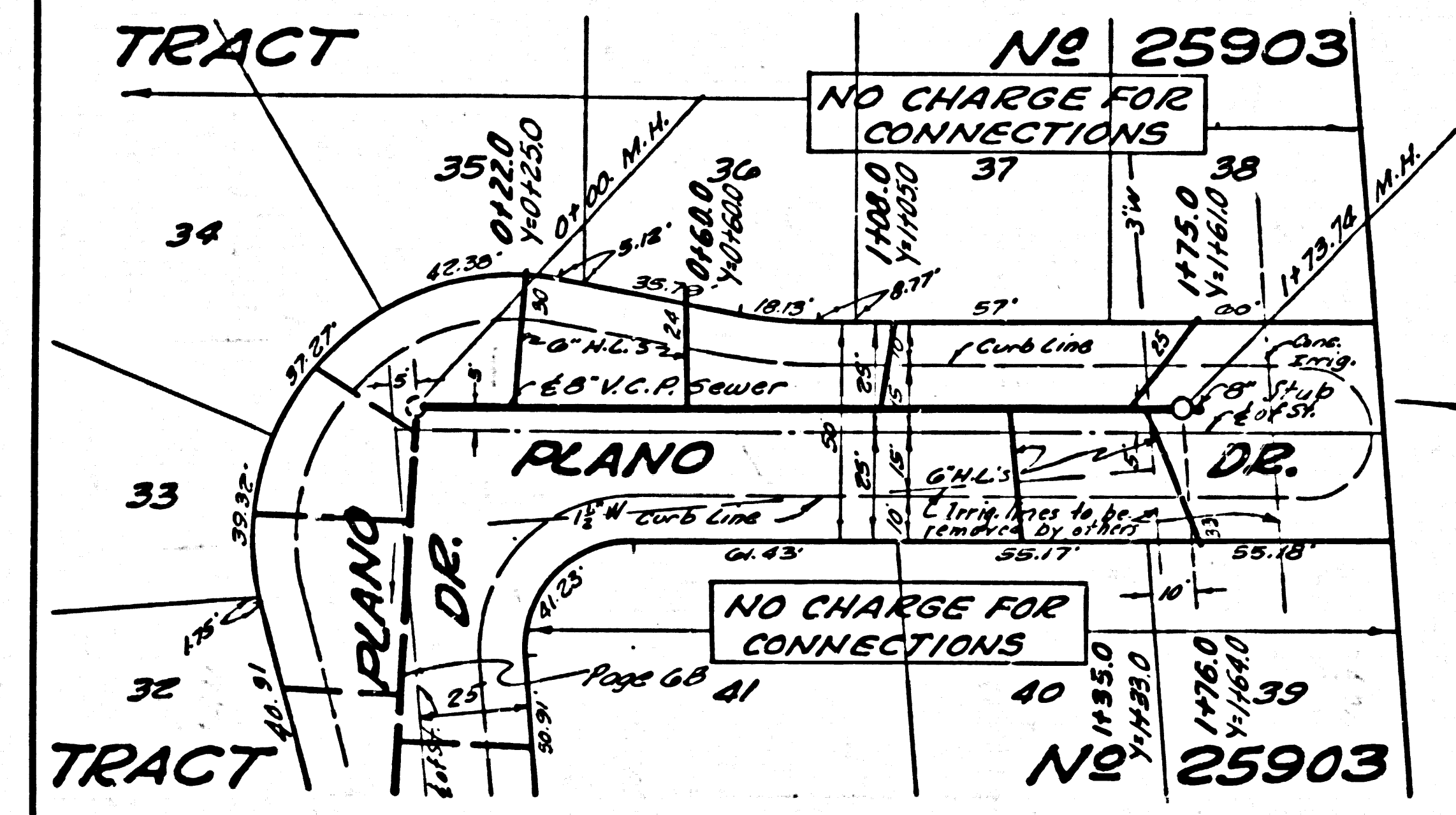
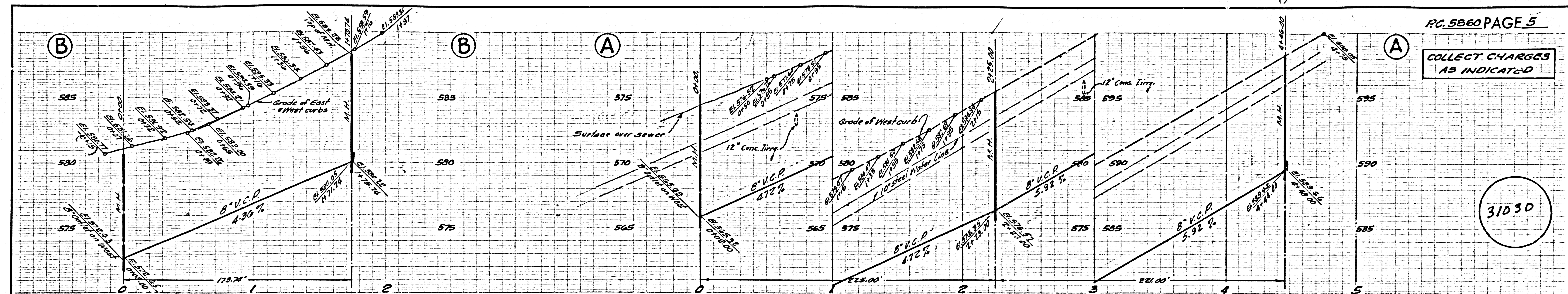
NO CHARGE FOR CONNECTIONS

NO 25903

REIMBURSEMENT CHARGE-ACREAGE ONLY-CALL SANITATION DIVISION-CENTRAL OFFICE

COLLECT CHARGES AS INDICATED

31030



NO CHARGE FOR CONNECTIONS

31031

