

Bench Mark: County Surveyor B.M. USGS Std. disc. stamped Q 785-1946 set flush with ground 45'2" N. of Palos Verdes Drive North 47.4 East of Narbonne Avenue. Elev. 355.518

Note: County Surveyor B.M. 36.2 Co. precise Survey 1953 Adjustable 355.583. Add 0.065 to all elevations shown hereon to agree with 1953 Adjustment.

**PRIVATE ENGINEER'S
NOTICE TO CONTRACTOR**

THE EXISTENCE AND LOCATION OF ANY UNDERGROUND UTILITY PIPES OR STRUCTURES SHOWN ON THESE PLANS ARE OBTAINED BY A SEARCH OF THE AVAILABLE RECORDS. TO THE BEST OF OUR KNOWLEDGE THERE ARE NO EXISTING UTILITIES EXCEPT AS SHOWN ON THIS MAP. THE CONTRACTOR IS REQUIRED TO TAKE PRECAUTIONARY MEASURES TO PROTECT THE UTILITY LINES SHOWN AND ANY OTHER LINES NOT OF RECORD OR NOT SHOWN ON THE DRAWING.

**DOUBLE SCALE
LOMITA BLDG. DIST. NO. 7.I**

NO REPRESENTATIVE OF THE COUNTY ENGINEER WILL SURVEY OR LAYOUT ANY PORTION OF THE WORK.

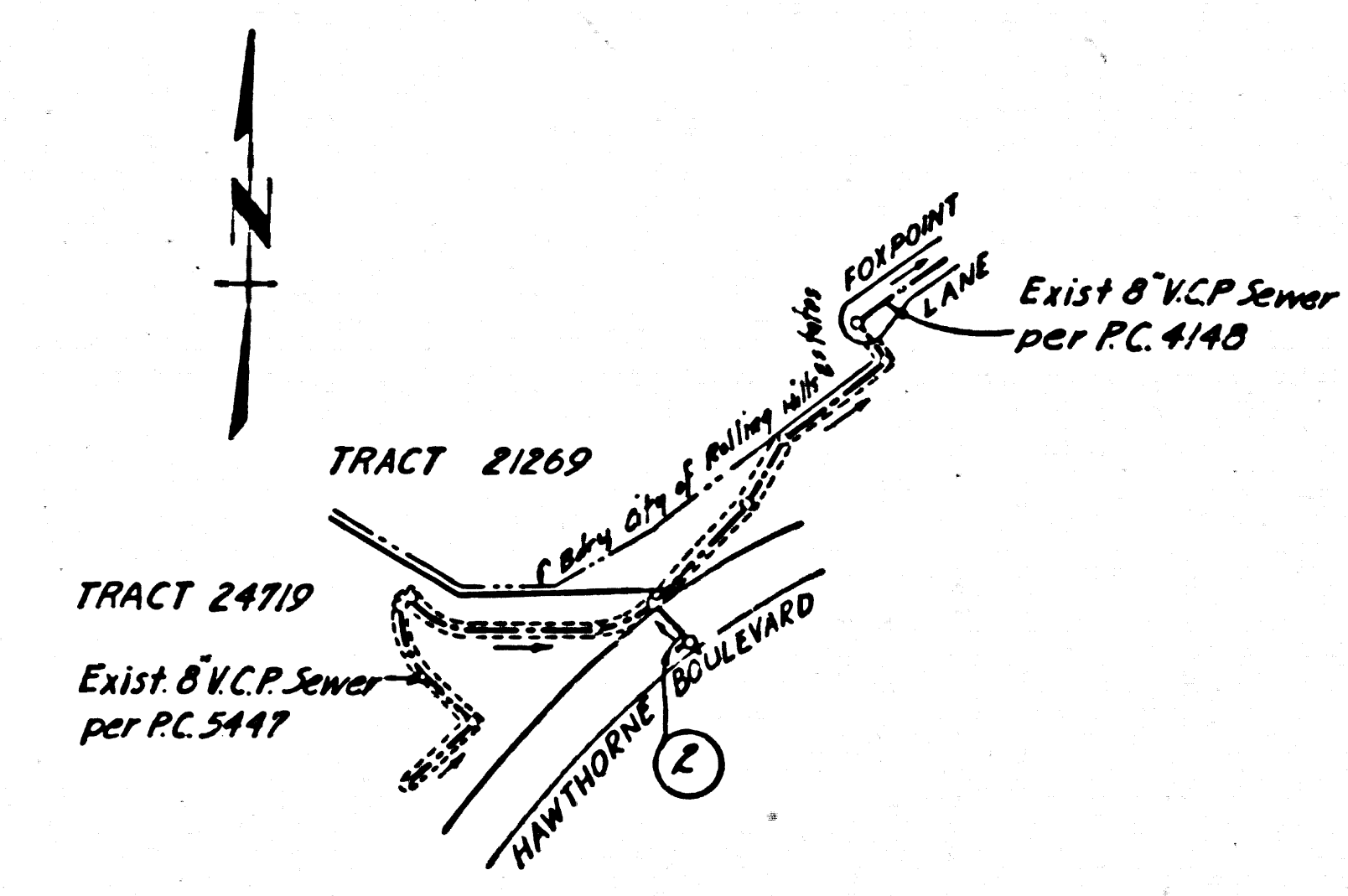
NO REVISIONS SHALL BE MADE IN THESE PLANS WITHOUT THE APPROVAL OF THE COUNTY ENGINEER.

1. USE STANDARD MANHOLE FRAMES AND COVERS, S-A-117, EXCEPT AS NOTED.
2. USE STANDARD STRENGTH PIPE EXCEPT AS NOTED.
3. USE MORTAR OR "WEDGE-LOCK" OR "SPID-SEAL" FOR ALL VITRIFIED CLAY PIPE JOINTS PER SPEC., SEC. 342.48, EXCEPT AS NOTED OTHERWISE.
4. RESURFACE ALL TRENCH WITHIN PAVED AREA TO MEET L. A. COUNTY ROAD DEPT., OR CALIF. STATE HIGHWAY DEPT. REQUIREMENTS IN ACCORDANCE WITH PERMITS.
5. ENCASE FOUR FEET OF SEWER AT POINTS OF INTERFERENCE WITH POLES, S-A-178, CASE III.
6. JOINT COMPOUND MUST BE SUBSTITUTED FOR CEMENT MORTAR FOR ALL JOINTS IN FILLED AREAS.
7. ALL STRUCTURES SHALL BE SINK SEWER STRUCTURES, S-A-104, EXCEPT AS NOTED.
8. FOR ALLOWABLE LEAKAGE TEST USE FORMULA NO. 1 SPEC., SEC. 34.
9. STANDARD SPECIFICATIONS DATED OCT. 10, 1960 APPLY IN THE CONSTRUCTION OF THIS PROJECT.

THE CONTRACTOR SHALL NOTIFY THE CONSTRUCTION DIVISION BY TELEPHONE, MADISON 9-4747, EXT. 8151 AT LEAST 24 HOURS BEFORE STARTING ANY WORK UNDER THIS CONTRACT.

NO CONNECTIONS FOR THE DISPOSAL OF INDUSTRIAL WASTES SHALL BE MADE TO SEWERS SHOWN ON THESE DRAWINGS WITHOUT WRITTEN PERMISSION FROM THE CHIEF ENGINEER AND GENERAL MANAGER OF THE COUNTY SANITATION DISTRICTS.

ENGINEERING SERVICE CORPORATION					
1127 W. WASHINGTON BLVD.					
LOS ANGELES 15, CALIF. R.I. 9-7281					
REVISIONS			TRACED BY R. GUERIN		
DESIG'D BY B. FROMAN			CK'D BY		
SUBMITTED			SUBMITTED		
SUB STRUCTURES OK'D					
W. O. NO.	DWG. NO.	DATE	SCALE	L. B.	F. B.
6777-89		3-29-61	As Noted		



INDEX MAP
HAWTHORNE BLVD.
P.C. 5866
SCALE: 1" = 400'

**NO CHARGE
FOR CONNECTIONS**
R. F. Harding 4-27-61

PROFILE ALIGNMENT AND GRADE OF **P.C. 5866**
SANITARY SEWERS PAGE 1
TO BE CONSTRUCTED IN **J.N. 0353.87**

HAWTHORNE BLVD. CROSSING
PRIVATE CONTRACT NO. 5866

W.S. 27
1 SHEETS, 2 PAGES
SCALE: VERT. 1" = 4'
HORIZ. 1" = 40'
APRIL, 1961
PREPARED IN THE OFFICES OF
ENGINEERING SERVICE CORPORATION

30543

BY: *R. J. Jones*
REG. C. E. NO. 3692
FOR LEGEND SEE PLAN NO. S-A-64

NOTE: GRADES TO WHICH THIS IMPROVEMENT IS TO BE CONSTRUCTED ARE SHOWN ON PLANS AND PROFILES. GRADE POINTS FOR TOP OF CURB, CENTER LINE OF STREETS, OR CENTER LINE OF ALLEYS ARE SHOWN BY CIRCLES ON PROFILES. AT ALL POINTS BETWEEN DESIGNATED POINTS THE GRADE SHALL BE ESTABLISHED SO AS TO CONFORM TO A STRAIGHT LINE DRAWN BETWEEN SAID DESIGNATED POINTS.
ELEVATIONS ARE IN FEET ABOVE M.S.L. & S.E.A. LEVEL. DATUM OF 1929.
THIS DRAWING AND THE DATA HEREON ARE HEREBY MADE A PART OF THE SPECIFICATIONS.
WORK SHALL BE CONSTRUCTED ACCORDING TO SPECIFICATIONS ON FILE IN THE OFFICE OF THE COUNTY ENGINEER AND SHALL BE PROSECUTED ONLY IN THE PRESENCE OF THE COUNTY ENGINEER.
BEFORE WORK CAN BE STARTED THE CONTRACTOR MUST OBTAIN A PERMIT TO EXCAVATE IN COUNTY STREETS FROM THE L. A. COUNTY ROAD DEPT., DISTRICT OFFICE HERE AND PAY A FEE TO THE COUNTY ENGINEER ROOM 549, COUNTY BLDG. 206 N. 2ND ST. SUFFICIENT TO COVER THE COST OF CONSTRUCTION INSPECTION AND RECORD PLANS.
APPROVAL OF THIS PLAN BY THE COUNTY OF LOS ANGELES DOES NOT CONSTITUTE A REPRESENTATION AS TO THE ACCURACY OF THE LOCATION OR OF THE EXISTENCE OR NON-EXISTENCE OF ANY UNDERGROUND UTILITY PIPE, OR STRUCTURE WITHIN THE LIMITS OF THIS PROJECT. THIS NOTE APPLIES TO ALL PAGES.
IF WORK IS TO BE DONE IN A STATE HIGHWAY, A PERMIT MUST BE OBTAINED FROM THE STATE OF CALIFORNIA, DIVISION OF HIGHWAYS, 130 SOUTH SPRING STREET.

COUNTY OF LOS ANGELES, CALIFORNIA
APPROVED, JOHN A. LAMBIE, COUNTY ENGINEER
APPROVED, C.R. COMPTON, CHIEF ENGINEER
BY: *C.E. ...* ASST. SANITATION ENGINEER
BY: *M. ...* OFFICE ENGINEER
CHECKED BY: *J.R. ...*
OFFICE OF COUNTY ENGINEER, REG. C. E. NO. 3466

SUBMITTED BY: *Jack ...* DATE 4-26-61
PALOS VERDES-CENTINELA VALLEY REGIONAL ENGINEER R.C.E. NR

P.C. 5866 PAGE 2

DOUBLE SCALE

**NO CHARGE
FOR CONNECTIONS**

30544

