

PUENTE BLDG. DIST. NO. 2

PROFILE ALIGNMENT AND GRADE OF P.C. 5873
 SANITARY SEWERS PAGE 1
 TO BE CONSTRUCTED IN J.N. 0355:89
TRACT No 25755

PRIVATE CONTRACT NO. 5873

W.S. 38

SHEETS: 3 PAGES

SCALE: VERT. 1"=4' APRIL 1961
 HORIZ. 1"=40'

PREPARED IN THE OFFICES OF
 J. TRINDLE & WILSON
 13794 BEACH BOULEVARD
 WESTMINSTER, CALIFORNIA

BY: *J.S. Primm*
 REG. C. E. NO. 12497

FOR LEGEND SEE PLAN NO. S-A-64

NOTE:
 GRADES TO WHICH THIS IMPROVEMENT IS TO BE CONSTRUCTED ARE SHOWN ON PLANS AND PROFILES. GRADE POINTS FOR TOP OF CURBS, CENTER LINE OF STREETS OR CENTER LINE OF ALLEYS ARE SHOWN BY CIRCLES ON PROFILES. ALL POINTS BETWEEN DESIGNATED POINTS THE GRADE SHALL BE ESTABLISHED SO AS TO CONFORM TO A STRAIGHT LINE DRAWN BETWEEN SAID DESIGNATED POINTS.
 ELEVATIONS ARE IN FEET ABOVE U.S. & G.S. SEA LEVEL DATUM OF 1929.
 THIS DRAWING AND THE DATA HEREON ARE HEREBY MADE A PART OF THE SPECIFICATIONS.
 WORK SHALL BE CONSTRUCTED ACCORDING TO SPECIFICATIONS ON FILE IN THE OFFICE OF THE COUNTY ENGINEER AND SHALL BE PROSECUTED ONLY IN THE PRESENCE OF THE COUNTY ENGINEER.
 BEFORE WORK CAN BE STARTED, THE CONTRACTOR MUST OBTAIN A PERMIT TO EXCAVATE IN COUNTY STREETS FROM THE L.A. COUNTY ROAD DEPT., DISTRICT OFFICE NO. 1, AND PAY A FEE TO THE COUNTY ENGINEER, ROOM 210, 100 N. GARDEN ST., SUFFICIENT TO COVER THE COST OF CONSTRUCTION INSPECTION AND RECORD PLANS.
 APPROVAL OF THIS PLAN BY THE COUNTY OF LOS ANGELES DOES NOT CONSTITUTE A REPRESENTATION AS TO THE ACCURACY OF THE LOCATION OF OR THE EXISTENCE OR NON-EXISTENCE OF ANY UNDERGROUND UTILITY PIPE, OR STRUCTURE WITHIN THE LIMITS OF THIS PROJECT. THIS NOTE APPLIES TO ALL PAGES.
 IF WORK IS TO BE DONE IN A STATE HIGHWAY, A PERMIT MUST BE OBTAINED FROM THE STATE OF CALIFORNIA, DIVISION OF HIGHWAYS, 128 SOUTH SPRING STREET.

COUNTY OF LOS ANGELES, CALIFORNIA

APPROVED, JOHN A. LAMBIE, COUNTY ENGINEER APPROVED, C.R. CHAFFIN, CHIEF ENGINEER

BY: *C.E. Primm* ASST. SANITATION ENGINEER BY: *J.S. Primm* OFFICE ENGINEER

CHECKED BY: *B.F. Worley* 7-14-61
 OFFICE OF COUNTY ENGINEER, REG. C. E. NO. 11636

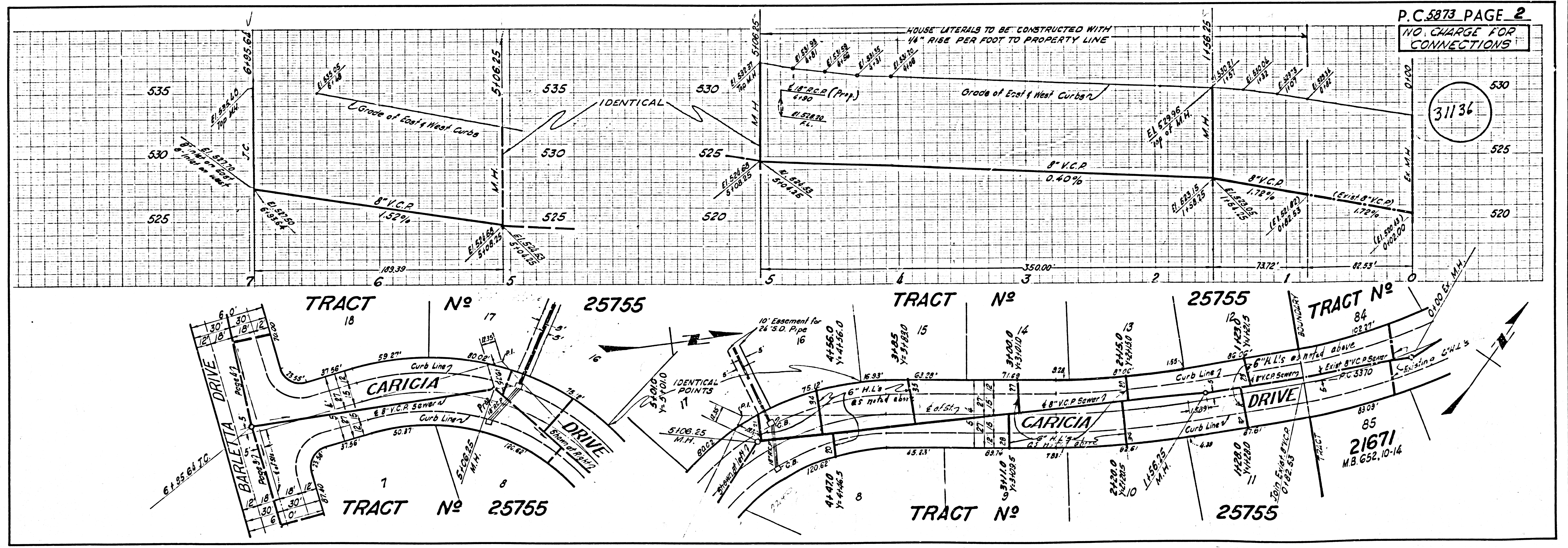
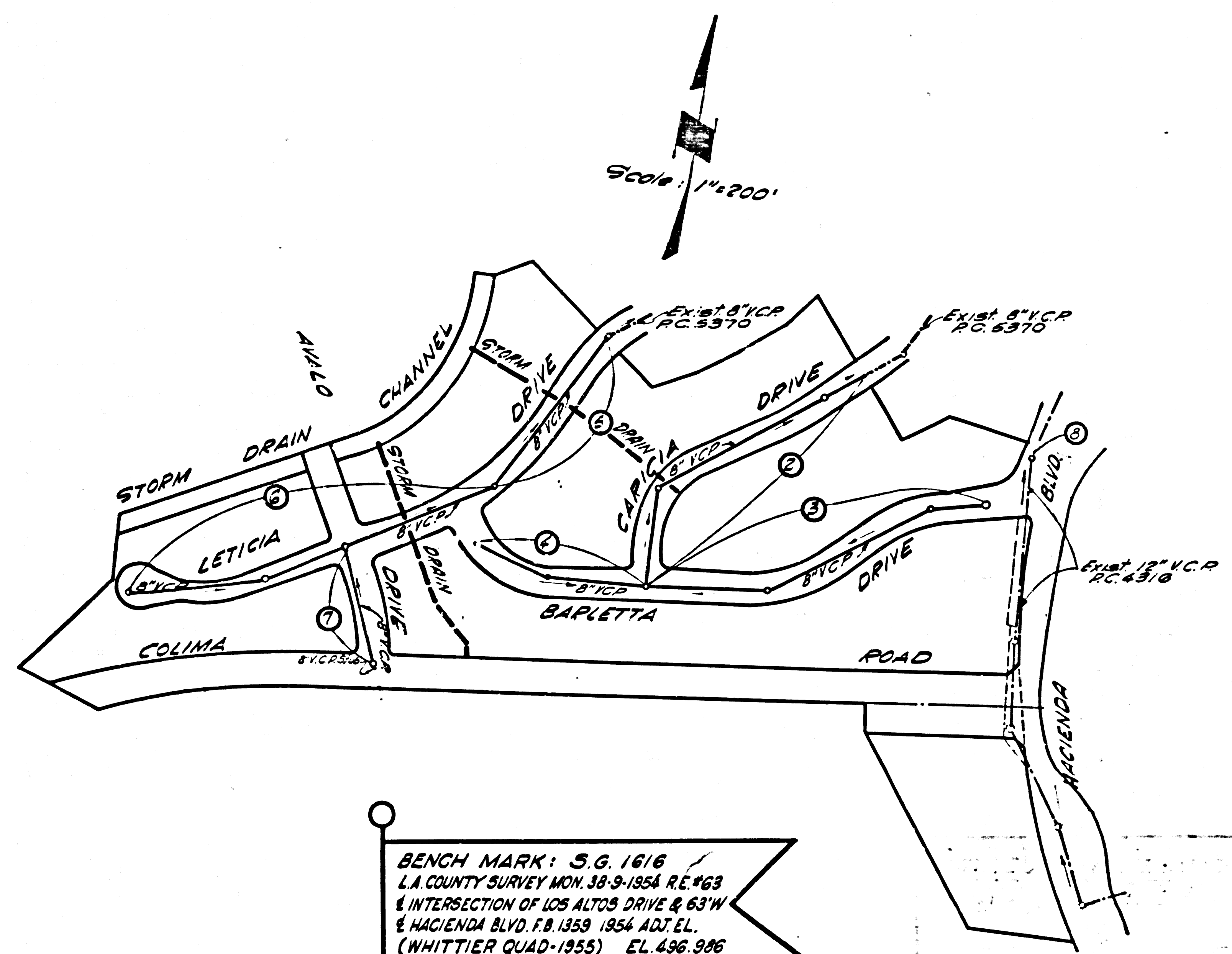
SUBMITTED: *W.C. ...*
 SAN DIMAS REGIONAL ENGINEER.

- NOTES:
1. PROVIDE STAKES ON THE PROPERTY LINE OR PROPERTY LINES PRODUCED AT RIGHT ANGLES TO THE SEWER LINE AT THE CENTER LINE OF EACH MANHOLE.
 2. NO REPRESENTATIVE OF THE COUNTY ENGINEER WILL SURVEY OR LAY OUT ANY PORTION OF THE WORK.
 3. THE OWNER OR HIS AUTHORIZED REPRESENTATIVE SHALL FURNISH THE COUNTY ENGINEER WITH GRADE SHEETS AND STATIONING FOR ALL HOUSE LATERALS AND Y BRANCHES AND SHALL PROVIDE STAKES FOR THEM AT THEIR PROPER LOCATIONS WITH STATIONING PLAINLY MARKED. ANY CHANGE IN LOCATION SHALL BE REQUESTED IN WRITING BY THE OWNER OR HIS REPRESENTATIVE.
 4. THE PRIVATE ENGINEER SHALL FURNISH THE HOUSE LATERAL DEPTH AT THE PROPERTY LINE BELOW THE TOP OF CURB ELEVATION FOR EACH HOUSE LATERAL ON THE GRADE SHEET.
 5. NO REVISIONS SHALL BE MADE IN THESE PLANS WITHOUT THE APPROVAL OF THE COUNTY ENGINEER.
 6. USE STANDARD MANHOLE FRAMES AND COVERS, S-117
 7. USE STANDARD STRENGTH PIPE EXCEPT AS NOTED.
 8. USE CEMENT MORTAR OR "WEDGE-LOCK" OR "SEAL" FOR ALL V.C.P. JOINTS PER SPEC., SECS. 34 & 48.
 9. RESURFACE ALL TRENCH WITHIN PAVED AREA TO MEET L.A. COUNTY ROAD DEPT. OR CALIF. STATE HIGHWAY REQUIREMENTS IN ACCORDANCE WITH PERMITS.
 10. ENCASE FOUR FEET OF SEWER AT POINTS OF INTERFERENCE WITH POLES, CASE III, S-172.
 11. HOUSE LATERALS TO BE CONSTRUCTED WITH INVERTS AT PROPERTY LINE... FEET BELOW CURB GRADE EXCEPT AS NOTED.
 12. ALL STRUCTURES SHALL BE BRICK SEWER STRUCTURES, S-114
 13. FOR ALLOWABLE LEAKAGE TEST USE FORMULA NO. 1, SPEC., SEC. 54.
 14. MANHOLE TOPS IN UNIMPROVED RIGHTS-OF-WAY TO BE SIX INCHES ABOVE FINISHED GRADE.
 15. THE CONTRACTOR SHALL NOTIFY THE CONSTRUCTION DIVISION BY TELEPHONE, MADISON 9-4747, SIX HOURS AT LEAST TWENTY-FOUR HOURS BEFORE STARTING ANY WORK UNDER THIS CONTRACT.
 16. STANDARD SPECIFICATIONS DATED OCTOBER 1960 WILL APPLY IN THE CONSTRUCTION OF THIS PROJECT.

NOTE:
 LOTS 57 & 58 ARE SERVED BY EXISTING SEWERS CONSTRUCTED UNDER P.C. 4318 IN HACIENDA BLVD.

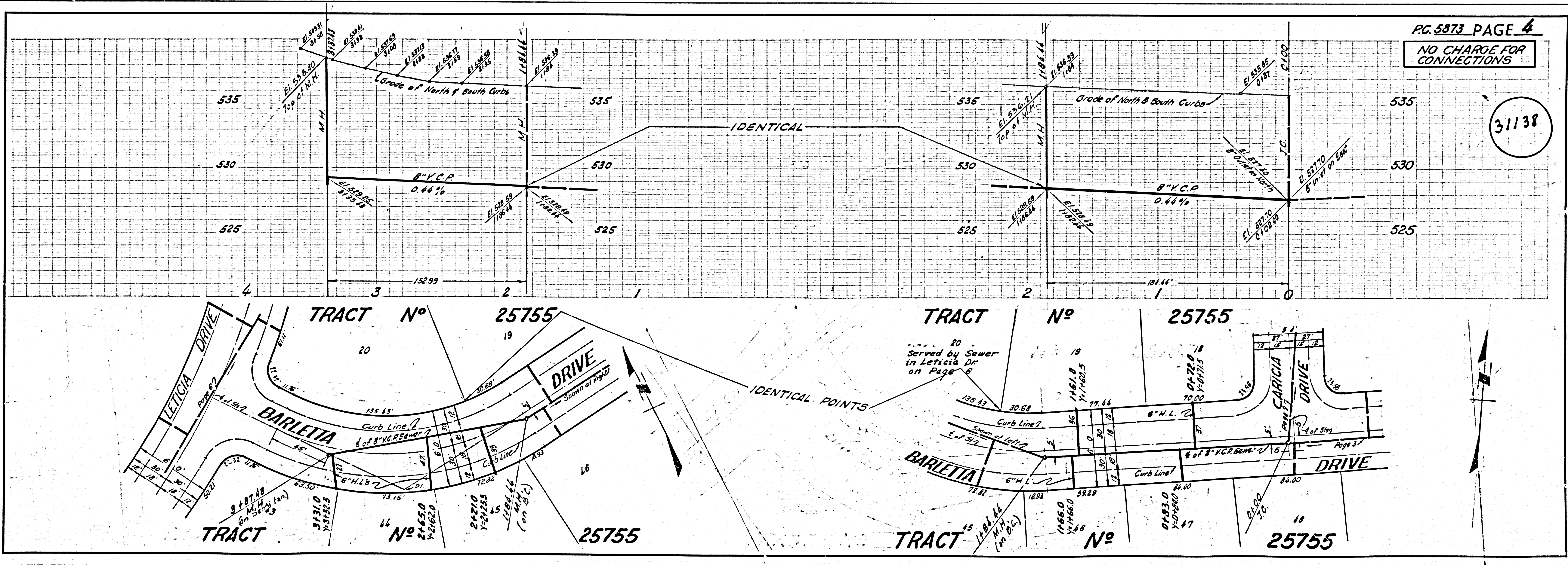
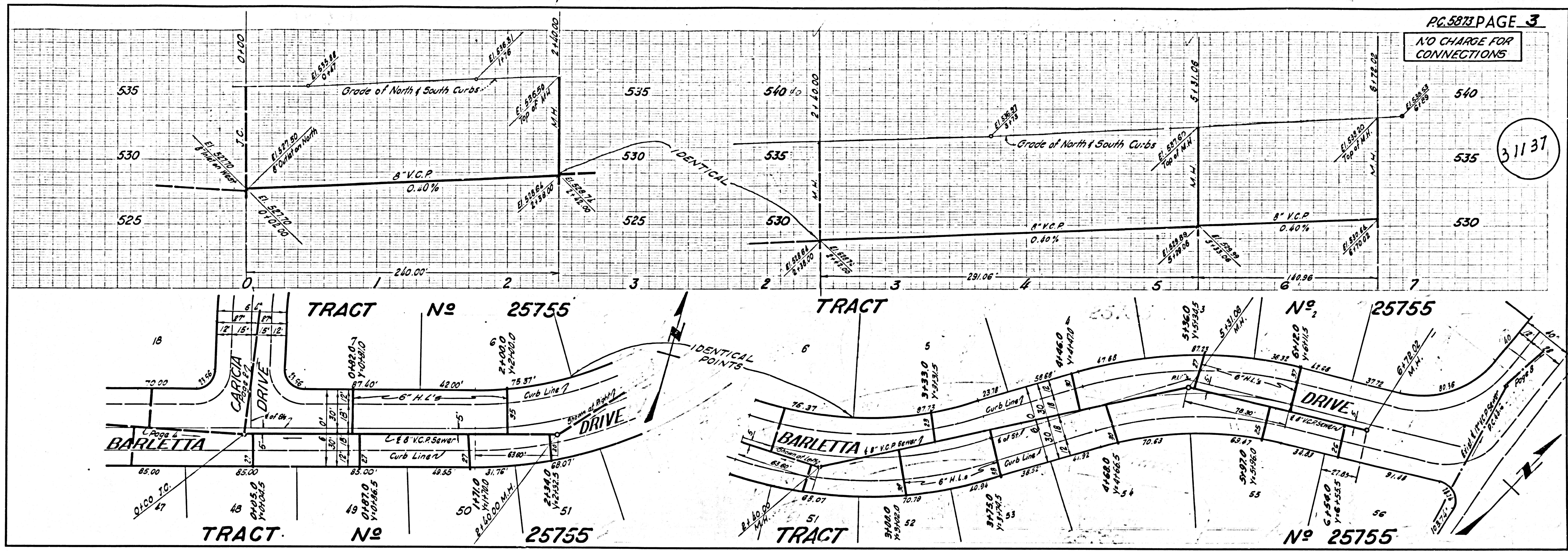
NO CHARGE FOR CONNECTIONS
 77-29-C Revised 7-10-61

BENCH MARK: S.G. 1616
 L.A. COUNTY SURVEY MON. 38-9-1954 RE #63
 AT INTERSECTION OF LOS ALTOS DRIVE & 63' W
 E HACIENDA BLVD. F.B. 1359 1954 ADJ. EL.
 (WHITTIER QUAD-1955) EL. 496.986



P.C. 5873 PAGE 2
 NO CHARGE FOR CONNECTIONS

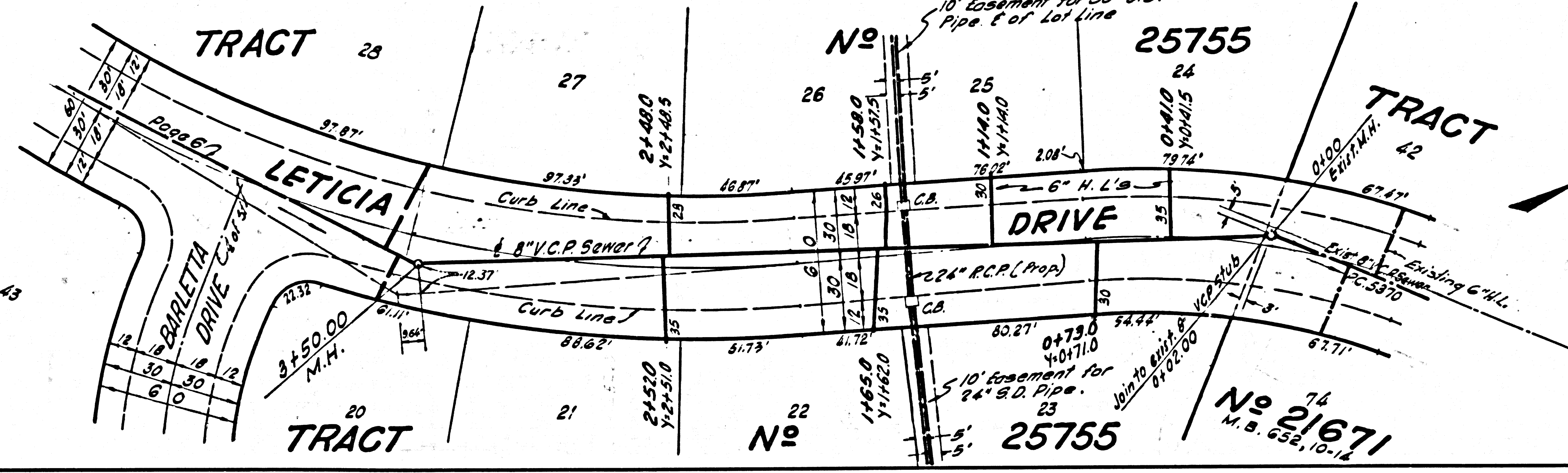
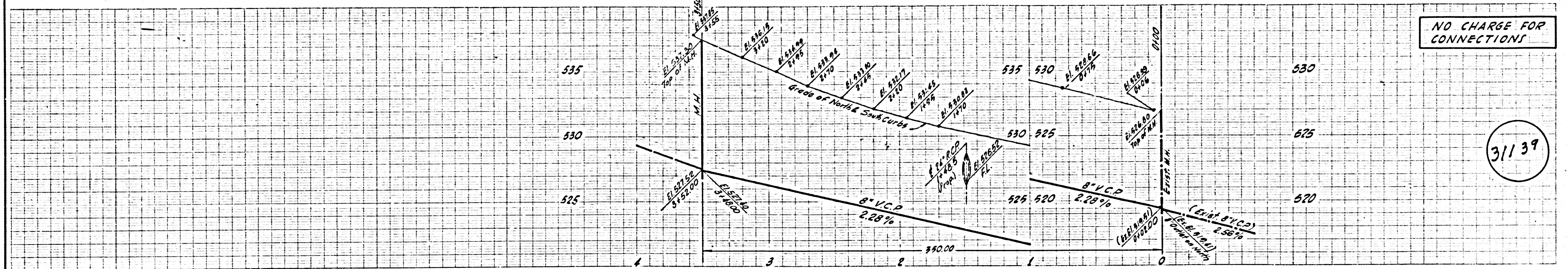
31136



TRACT No 52122
PC 5873

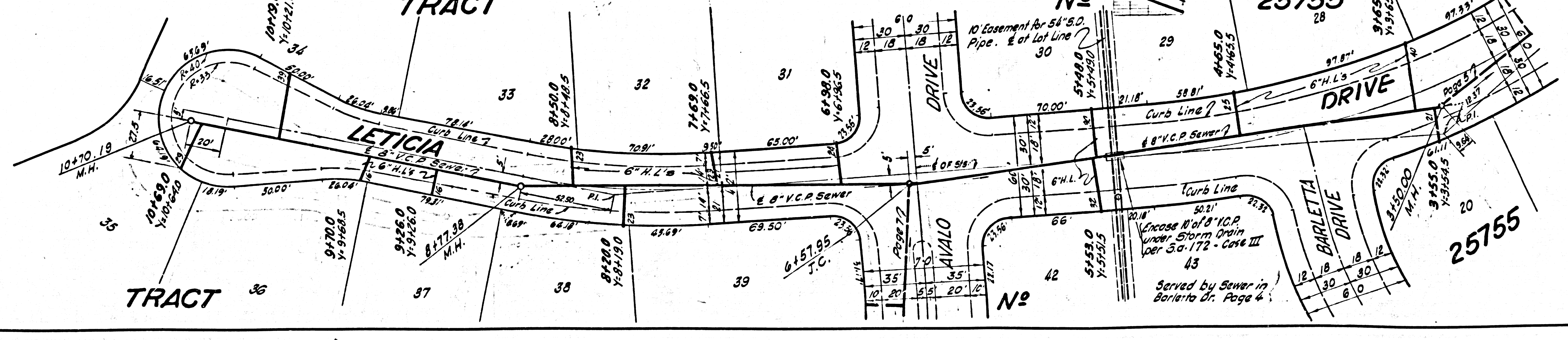
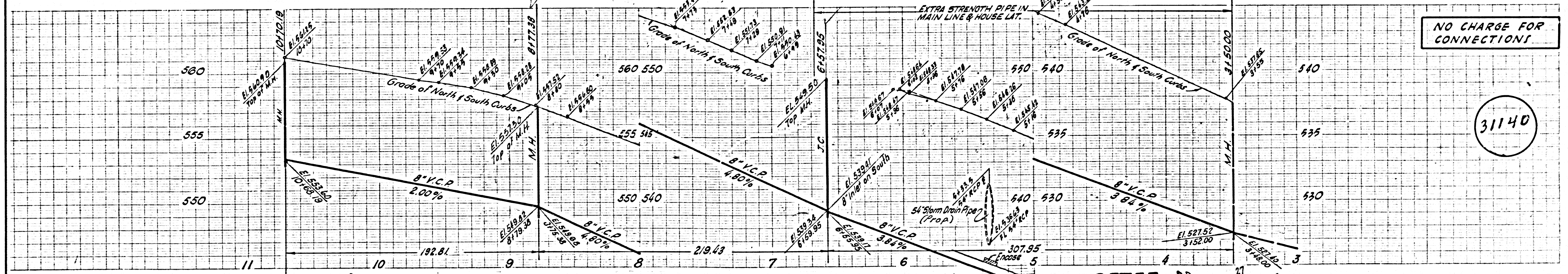
NO CHARGE FOR CONNECTIONS

31139



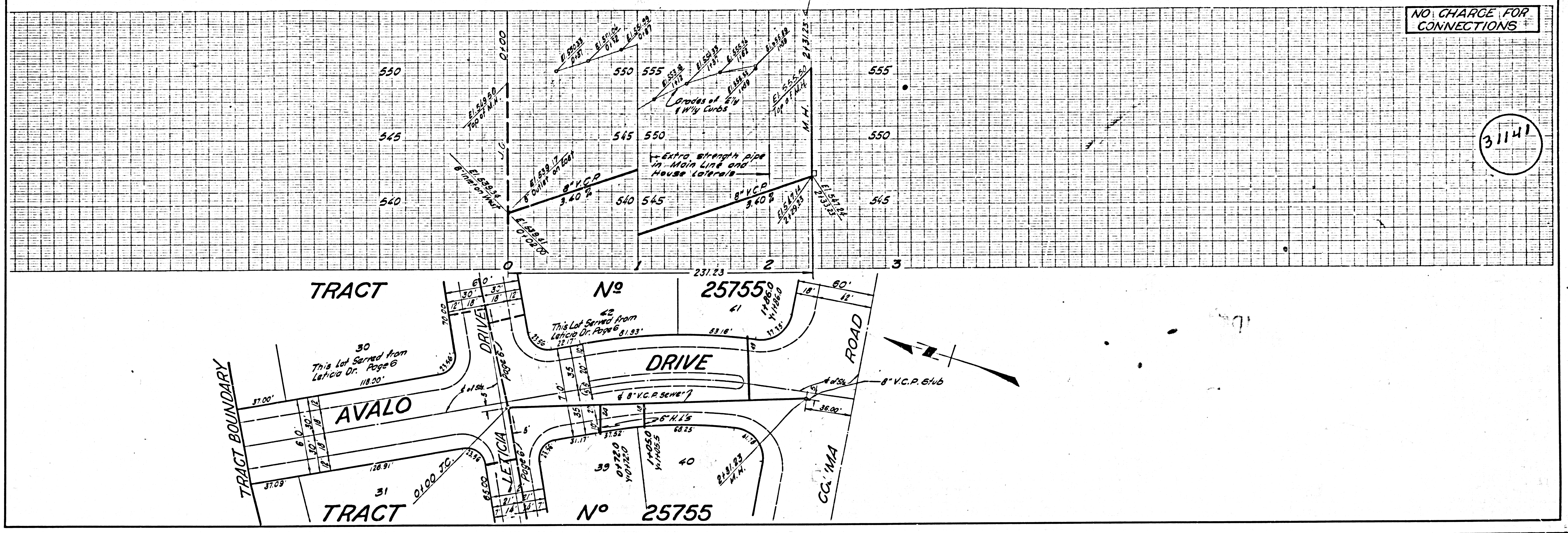
NO CHARGE FOR CONNECTIONS

31140



NO CHARGE FOR CONNECTIONS

31141



NO CHARGE FOR CONNECTIONS

31142

