

B.M. R-3 Elev. 141.250, CSFB 1520, Pgs. 6, 10, 11
 C.S. Mon. 40' W. of E. of Eastland Ave. & 381' N. of E. of Jillson Street, on Eastland Ave.

CITY OF COMMERCE BLDG. DIST. NO. 6.01

PROFILE ALIGHMENT AND GRADE OF P.C. 5887
 SANITARY SEWERS PAGE 1
 TO BE CONSTRUCTED IN

EASTLAND AVENUE
 PRIVATE CONTRACT NO. 5887

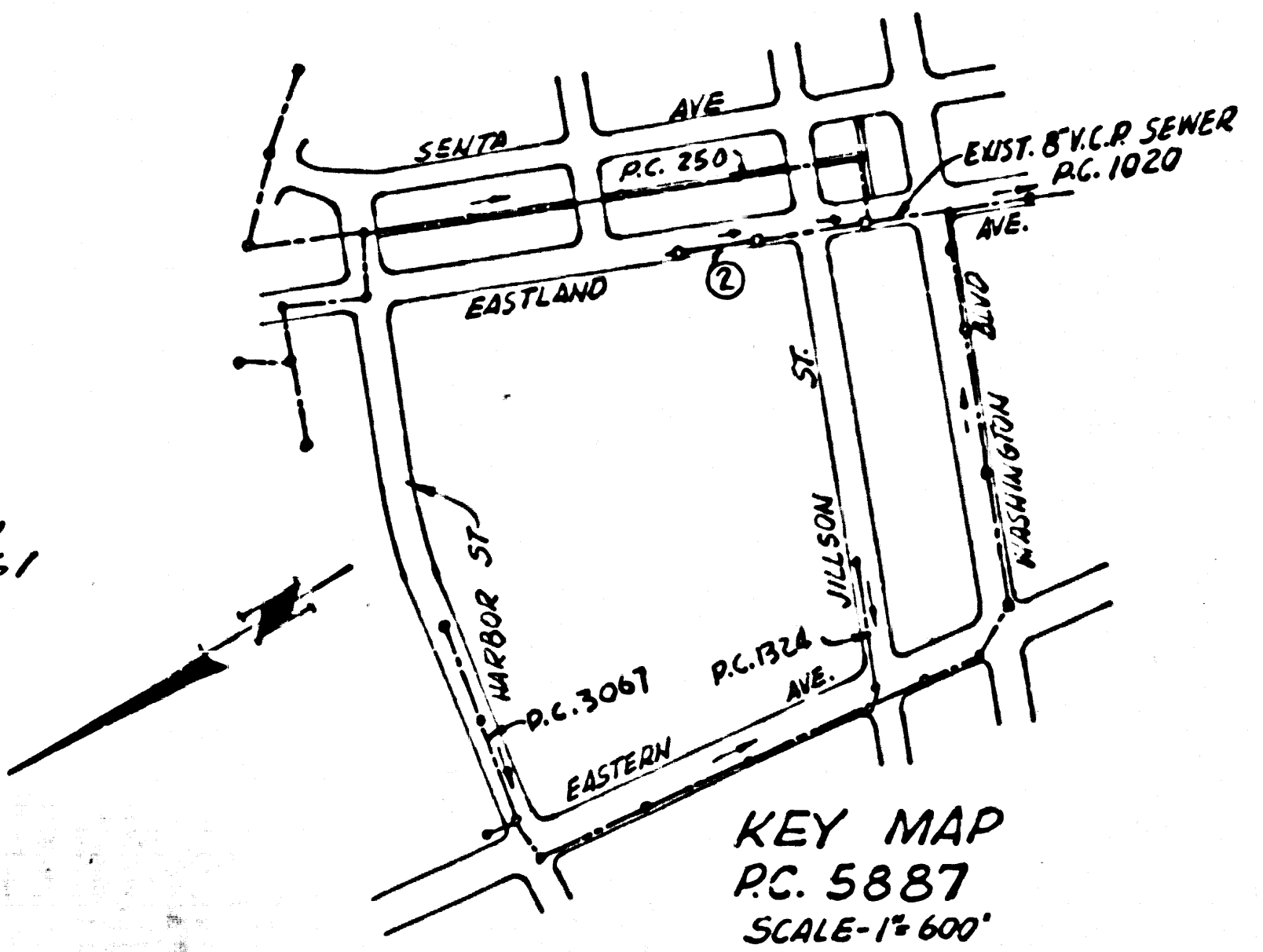
W.S. 36
 1 SHEET ; 2 PAGES
 SCALE: VERT. 1"=4'
 HORIZ. 1"=40' MAY 13, 1961
 PREPARED IN THE OFFICES OF
 L.M. NERENBAUM & ASSOCIATES
 BY L.M. Nerenbaum
 REG. C. E. NO. 6266

30704

- NOTES:
- PROVIDE STAKES ON THE PROPERTY LINE OR PROPERTY LINES PRODUCED AT RIGHT ANGLES TO THE SEWER LINE AT THE CENTER LINE OF EACH MANHOLE.
 - NO REPRESENTATIVE OF THE COUNTY ENGINEER WILL SURVEY OR LAY OUT ANY PORTION OF THE WORK.
 - THE OWNER OR HIS AUTHORIZED REPRESENTATIVE SHALL FURNISH THE COUNTY ENGINEER WITH GRADE SHEETS AND STATIONING FOR ALL HOUSE LATERALS AND Y BRANCHES AND SHALL PROVIDE STAKES FOR THEM AT THEIR PROPER LOCATIONS WITH STATIONING PLAINLY MARKED. ANY CHANGE IN LOCATION SHALL BE REQUESTED IN WRITING BY THE OWNER OR HIS REPRESENTATIVE.
 - THE PRIVATE ENGINEER SHALL FURNISH THE HOUSE LATERAL DEPTH AT THE PROPERTY LINE BELOW THE TOP OF CURB ELEVATION FOR EACH HOUSE LATERAL ON THE GRADE SHEET.
 - NO REVISIONS SHALL BE MADE IN THESE PLANS WITHOUT THE APPROVAL OF THE COUNTY ENGINEER.
 - USE STANDARD MANHOLE FRAMES AND COVERS, S-117 A.
 - USE STANDARD STRENGTH PIPE EXCEPT AS NOTED.
 - USE CEMENT MORTAR OR "WEDGE-LOCK" OR "SEAL-O-SEAL" FOR ALL V.C.P. JOINTS PER SPECS, SECS. 34 & 41.
 - RESURFACE ALL TRENCH WITHIN PAVED AREA TO MEET L.A. COUNTY ROAD DEPT. OR CALIF. STATE HIGHWAY REQUIREMENTS IN ACCORDANCE WITH PERMITS.
 - ENCASE FOUR FEET OF SEWER AT POINTS OF INTERFERENCE WITH POLES, CASE NO. S-112.
 - HOUSE LATERALS TO BE CONSTRUCTED WITH 1/4" RISE PER FOOT TO PROPERTY LINE.
 - ALL STRUCTURES SHALL BE BRICK SEWER STRUCTURES, S-104.
 - FOR ALLOWABLE LEAKAGE TEST USE FORMULA NO. 1 SPEC. SEC. 54.
 - MANHOLES SHALL BE CONSTRUCTED WITH 12" RISE ABOVE FINISHED GRADE.
 - THE CONTRACTOR SHALL NOTIFY THE CONSTRUCTION & STORM DRAIN DIVISION BY TELEPHONE, MADISON 5-4147, EX-1551, AT LEAST TWENTY-FOUR HOURS BEFORE STARTING ANY WORK UNDER THIS CONTRACT.
 - STANDARD SPECIFICATIONS DATED OCT. 17, 1960 APPLY IN THE CONSTRUCTION OF THIS PROJECT.

CONNECTION CHARGES AS INDICATED
 A.L. Albertson 5/24/61

APPROVED BY J. H. Stewart DATE 5/24/61
 INDUSTRIAL WASTE DIVISION



NO CONNECTIONS FOR THE DISPOSAL OF INDUSTRIAL WASTES SHALL BE MADE TO SEWERS SHOWN ON THESE DRAWINGS WITHOUT WRITTEN PERMISSION FROM THE CHIEF ENGINEER AND GENERAL MANAGER OF THE COUNTY SANITATION DISTRICTS.

NOTE: GRADES TO WHICH THIS IMPROVEMENT IS TO BE CONSTRUCTED ARE SHOWN ON PLANS AND PROFILES. GRADE POINTS FOR TOP OF CURBS, CENTER LINE OF STREETS, OR CENTER LINE OF ALLEYS ARE SHOWN BY CIRCLES ON PROFILES. AT ALL POINTS BETWEEN DESIGNATED POINTS THE GRADE SHALL BE ESTABLISHED SO AS TO CONFORM TO A STRAIGHT LINE DRAWN BETWEEN SAID DESIGNATED POINTS.
 ELEVATIONS ARE IN FEET ABOVE U.S.C. & G.S. SEA LEVEL DATUM OF 1929.
 THIS DRAWING AND THE DATA HEREON ARE HEREBY MADE A PART OF THE SPECIFICATIONS.
 WORK SHALL BE CONSTRUCTED ACCORDING TO SPECIFICATIONS ON FILE IN THE OFFICE OF THE CITY ENGINEER AND SHALL BE PROSECUTED ONLY IN THE PRESENCE OF THE CITY ENGINEER.
 BEFORE WORK CAN BE STARTED THE CONTRACTOR MUST OBTAIN A PERMIT TO EXCAVATE IN CITY STREETS FROM THE L.A. COUNTY ROAD DEPT. DISTRICT OFFICE NO. 2252 ATLANTIC BOULEVARD AND MAKE A DEPOSIT WITH THE CITY OF COMMERCE, 2252 ATLANTIC BOULEVARD SUFFICIENT TO COVER THE COST OF CONSTRUCTION INSPECTION AND RECORD PLANS.
 APPROVAL OF THIS PLAN BY THE COUNTY OF LOS ANGELES DOES NOT CONSTITUTE A REPRESENTATION AS TO THE ACCURACY OF THE LOCATION OF OR THE EXISTENCE OR NON-EXISTENCE OF ANY UNDERGROUND UTILITY PIPE, OR STRUCTURE WITHIN THE LIMITS OF THIS PROJECT. THIS NOTE APPLIES TO ALL AGES.
 IF WORK IS TO BE DONE IN A STATE HIGHWAY, A PERMIT MUST BE OBTAINED FROM THE STATE OF CALIFORNIA, DIVISION OF HIGHWAYS, 128 SOUTH SPRING STREET.

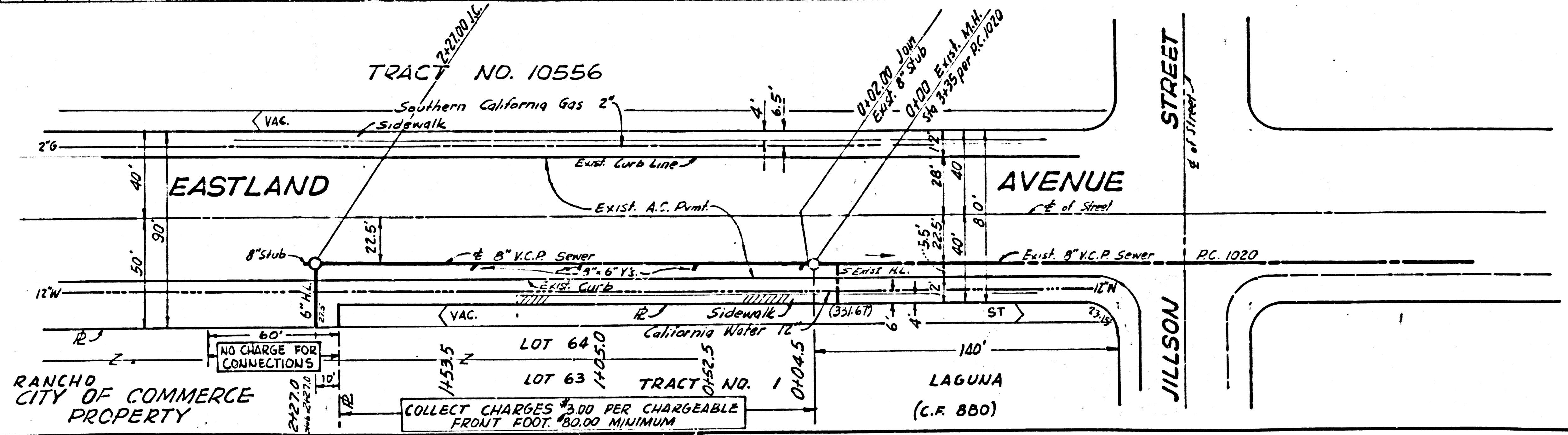
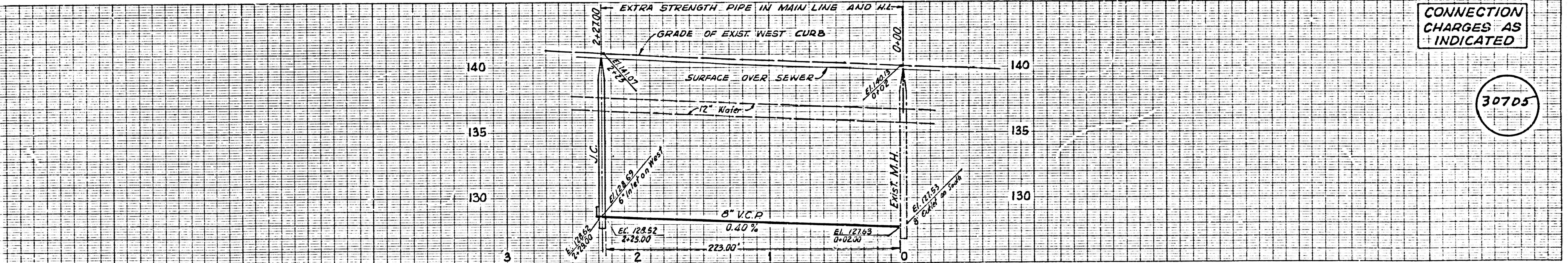
CITY OF COMMERCE, CALIFORNIA
 APPROVED, JOHN A. LAMBIE, CITY ENGINEER APPROVED, C.R. COMPTON, CHIEF ENGINEER
 CO. SAN. DIST. NO. 2
 BY C.E. Priddy J. Colburn
 455E SANITATION ENGINEER OFFICE ENGINEER
 CHECKED BY R.K. Orin 5-25-61
 OFFICE OF COUNTY ENGINEER, REG. C. E. NO. 3494

SUBMITTED BY: N. F. Brander
 SAN GABRIEL VALLEY REGIONAL ENGINEER

P.C. 5887 PAGE 2

CONNECTION CHARGES AS INDICATED

30705



J.N. 1370