

BENCH MARK: Whittier Quad. Elev. 249.254.
 S.G. 1537 Adj. 1955
 Set L&T in N.W. edge of 4' Concr. walk of Bldg.
 ±75' S. & Rush Street ±51' E. & Central Avenue.

SOUTH EL MONTE BLDG. DIST. NO. 5.04

PROFILE ALIGNMENT AND GRADE OF **P.C. 5888**
SANITARY SEWERS PAGE 1
 TO BE CONSTRUCTED IN
RUSH STREET No 2

PRIVATE CONTRACT NO. 5888

W.S. 37
 1 SHEET ; 2 PAGES
 SCALE: VERT. 1" = 4'
 HORIZ. 1" = 40'
 MAY, 1961
 PREPARED IN THE OFFICES OF
ADAMS AND ELLS
 CIVIL ENGINEERS

31175

REG. C. E. NO. 12886
 FOR LEGEND SEE PLAN NO. S.A-64

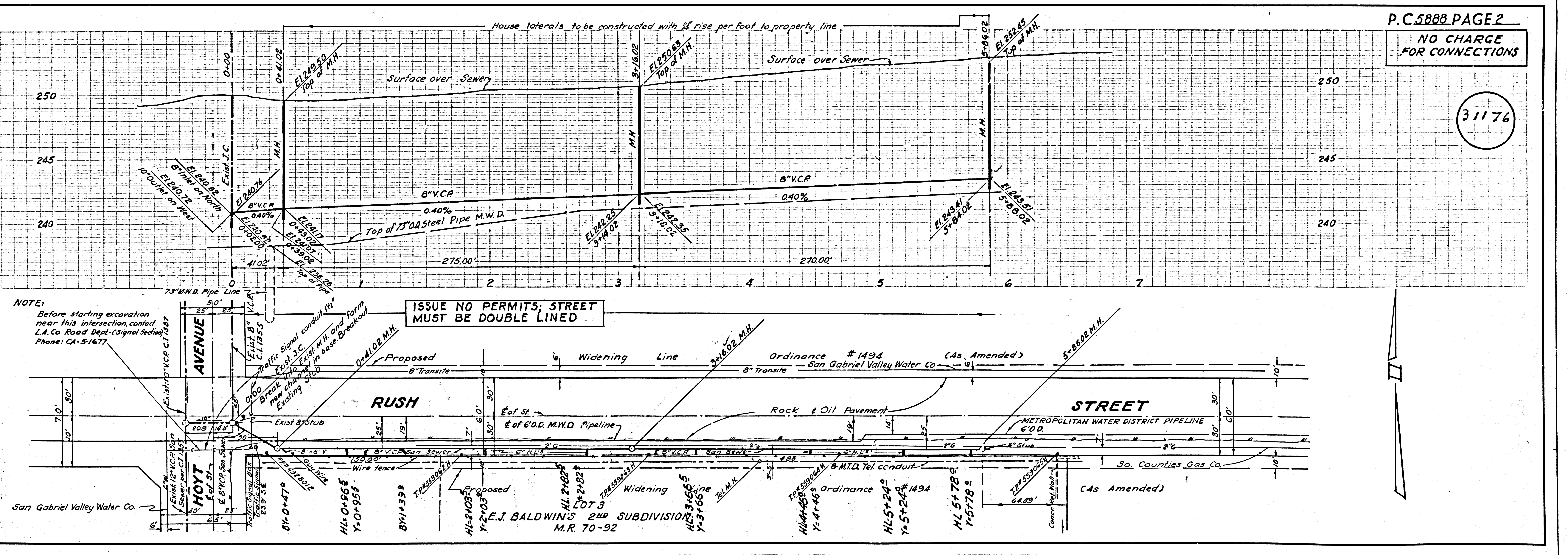
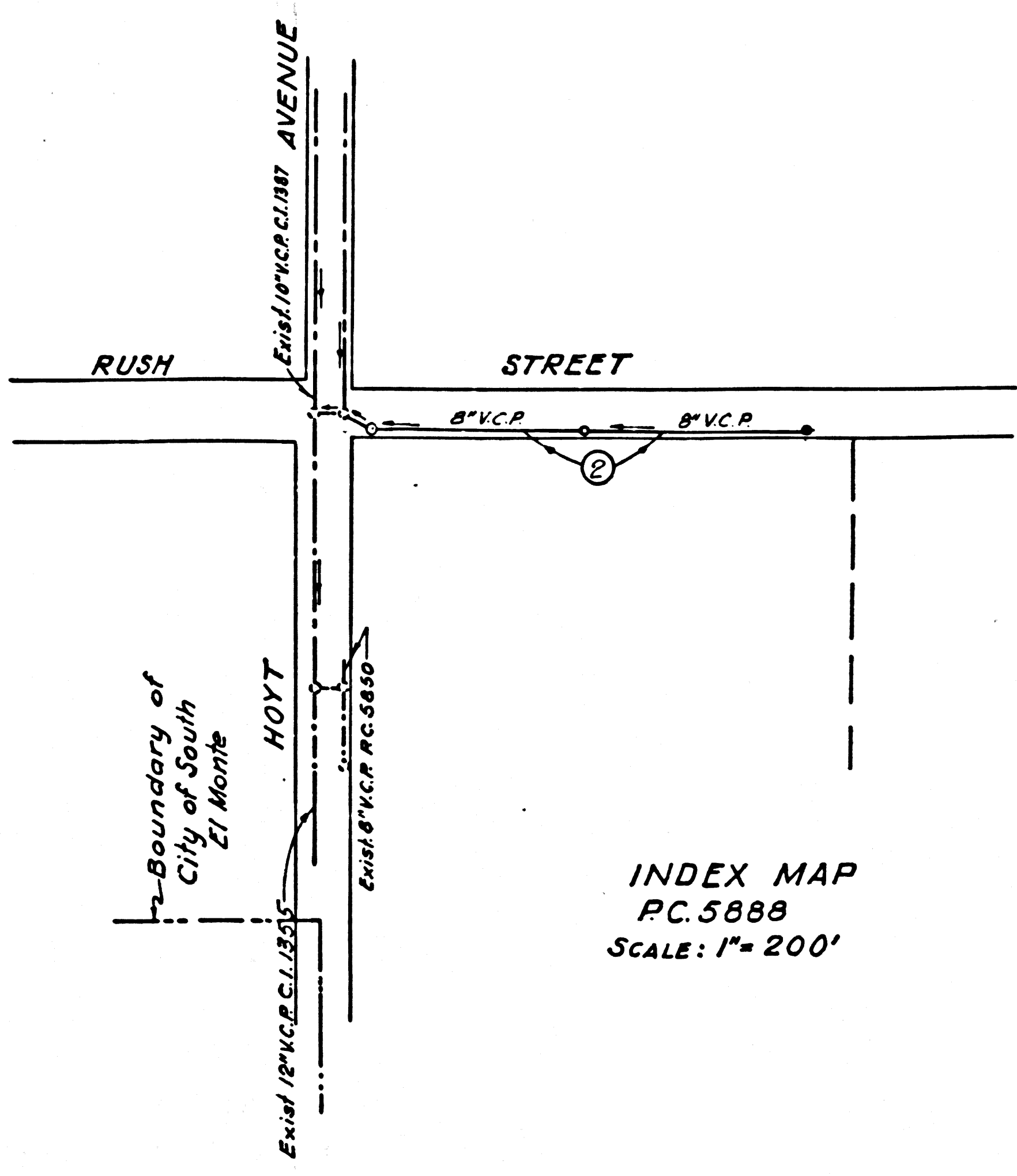
- NOTES:
1. PROVIDE STAKES ON THE PROPERTY LINE OR PROPERTY LINES PRODUCED AT RIGHT ANGLES TO THE SEWER LINE AT THE CENTER LINE OF EACH MANHOLE.
 2. NO REPRESENTATIVE OF THE CITY ENGINEER WILL SURVEY OR LAY OUT ANY PORTION OF THE WORK.
 3. THE OWNER OR HIS AUTHORIZED REPRESENTATIVE SHALL FURNISH OR LAY OUT ANY GRADE SHEETS AND STATIONING FOR ALL HOUSE LATERALS AND Y BRANCHES AND SHALL PROVIDE STAKES FOR THEM AT THEIR PROPER LOCATIONS WITH STATIONING PLAINLY MARKED. ANY CHANGE IN LOCATION SHALL BE REQUESTED IN WRITING BY THE OWNER OR HIS REPRESENTATIVE.
 4. THE PRIVATE ENGINEER SHALL FURNISH THE HOUSE LATERAL DEPTH AT THE PROPERTY LINE BELOW THE TOP OF CURB ELEVATION FOR EACH HOUSE LATERAL ON THE GRADE SHEET.
 5. NO REVISIONS SHALL BE MADE IN THESE PLANS WITHOUT THE APPROVAL OF THE CITY ENGINEER.
 6. USE STANDARD MANHOLE FRAMES AND COVERS, S-117, A.
 7. USE EXTRA STRENGTH PIPE ALL PIPE IS STANDARD LENGTH.
 8. USE CEMENT MORTAR OR "WEDGE-LOCK" OR "SPEED-SEAL" FOR ALL V.C.P. JOINTS PER SPECS. SECS. 34 & 48.
 9. RESURFACE ALL TRENCH WITHIN PAVED AREA TO MEET L.A. COUNTY ROAD DEPT. OR CALIF. STATE HIGHWAY REQUIREMENTS IN ACCORDANCE WITH PERMITS.
 10. ENCASE FOUR FEET OF SEWER AT POINTS OF INTERFERENCE WITH POLES, CASE III, S-117, A.
 11. HOUSE LATERALS TO BE CONSTRUCTED WITH RISE 1/4" PER FOOT TO PROPERTY LINE.
 12. ALL STRUCTURES SHALL BE BRICK 2-1/2" THICK STRUCTURES, S-114, EXCEPT AS NOTED.
 13. FOR ALLOWABLE LEAKAGE TEST USE FORMULA NO. 1, SPECS. SEC. 54.
 14. MANHOLE TOPS IN UNIMPROVED RIGHTS-OF-WAY TO BE LEVEL WITH FINISHED GRADE.
 15. THE CONTRACTOR SHALL NOTIFY THE CONSTRUCTION DIVISION BY TELEPHONE, MADISON 3-417, E.L. 8151, AT LEAST TWENTY-FOUR HOURS BEFORE STARTING ANY WORK UNDER THIS CONTRACT.
 16. STANDARD SPECIFICATIONS DATED OCT. 10, 1960 APPLY IN THE CONSTRUCTION OF THIS PROJECT.

NOTE:
 GRADES TO WHICH THIS IMPROVEMENT IS TO BE CONSTRUCTED ARE SHOWN ON PLANS AND PROFILES. GRADE POINTS FOR TOP OF CURBS, CENTER LINE OF STREETS OR CENTER LINE OF ALLEYS ARE SHOWN BY CIRCLES ON PROFILES. AT ALL POINTS BETWEEN DESIGNATED POINTS THE GRADE SHALL BE ESTABLISHED SO AS TO CONFORM TO A STRAIGHT LINE DRAWN BETWEEN SAID DESIGNATED POINTS.
 ELEVATIONS ARE IN FEET ABOVE U.S.C. & G.S. SEA LEVEL DATUM OF 1929.
 THIS DRAWING AND THE DATA HEREON ARE HEREBY MADE A PART OF THE SPECIFICATIONS.
 WORK SHALL BE CONSTRUCTED ACCORDING TO SPECIFICATIONS ON FILE IN THE OFFICE OF THE CITY ENGINEER AND SHALL BE PROSECUTED ONLY IN THE PRESENCE OF THE CITY ENGINEER.
 BEFORE WORK CAN BE STARTED, THE CONTRACTOR MUST OBTAIN A PERMIT TO EXCAVATE IN CITY STREETS FROM THE L.A. COUNTY ROAD DEPT., DISTRICT OFFICE NO. 1, AND MAKE A DEPOSIT WITH THE CITY OF SOUTH EL MONTE \$500 RUSH STREET SOUTH EL MONTE SUFFICIENT TO COVER THE COST OF CONSTRUCTION INSPECTION AND RECORD PLANS.
 APPROVAL OF THIS PLAN BY THE CITY OF SOUTH EL MONTE DOES NOT CONSTITUTE A REPRESENTATION AS TO THE ACCURACY OF THE LOCATION OR THE EXISTENCE OR NON-EXISTENCE OF ANY UNDERGROUND UTILITY PIPE, OR STRUCTURE WITHIN THE LIMITS OF THIS PROJECT. THIS NOTE APPLIES TO ALL PAGES.
 IF WORK IS TO BE DONE IN A STATE HIGHWAY, A PERMIT MUST BE OBTAINED FROM THE STATE OF CALIFORNIA, DIVISION OF HIGHWAYS, 128 SOUTH SPRING STREET.

CITY OF SOUTH EL MONTE, CALIFORNIA
 APPROVED, JOHN A. LAMBIE, CITY ENGINEER APPROVED, J.D. PARKURST, CHIEF ENGINEER
 CO. SAN. DIST. NO. 13
 BY: *[Signature]* For Sanitation Engineer
 CHECKED BY: *[Signature]* 10-20-61 OFFICE ENGINEER
 OFFICE OF COUNTY ENGINEER, REG. C. E. NO. 2404
 SUBMITTED: *[Signature]* N.F. Braundor
 SAN GABRIEL VALLEY REGIONAL ENGINEER

NO CHARGE
 FOR CONNECTIONS
[Signature] 10/11/61

APPROVED BY: *[Signature]* DATE: 10/6/61
 INDUSTRIAL WASTE DIVISION



P.C. 5888 PAGE 2
 NO CHARGE
 FOR CONNECTIONS

31176

NOTE:
 Before starting excavation near this intersection, contact L.A. Co. Road Dept. (Signal Section) Phone: CA-5-1677

ISSUE NO PERMITS; STREET MUST BE DOUBLE LINED