

SAN DIMAS BLDG. DIST. NO. 10

PROFILE ALIGNMENT AND GRADE OF P.C. 5889
 SANITARY SEWERS PAGE 1
 J.N. 0355.96

TO BE CONSTRUCTED IN
 TRACT NO. 24877
 AND
 (R.S. 2773)
 PRIVATE CONTRACT NO. 5889

W.S. 48

2 SHEETS, 3 PAGES
 SCALE: VERT. 1" = 4' APRIL, 1961

PREPARED IN THE OFFICES OF
 Pond Engineering Co.

W. R. Rangel
 REG. C.E. NO. 11587

FOR LEGEND SEE PLAN NO. S-A-64

30859

Bench Mark: F.B. 1361-12, B.M. 40-6, Foothill Boulevard and Valley Center Avenue & Int. a std. pre-cast mon. stamped; 8" below the surface and protected by a cast iron cover lettered "County Surveyor Monument" 1954 Adjusted Elev. 882.171. (Stamped, County Surveyor-R.E. 63)

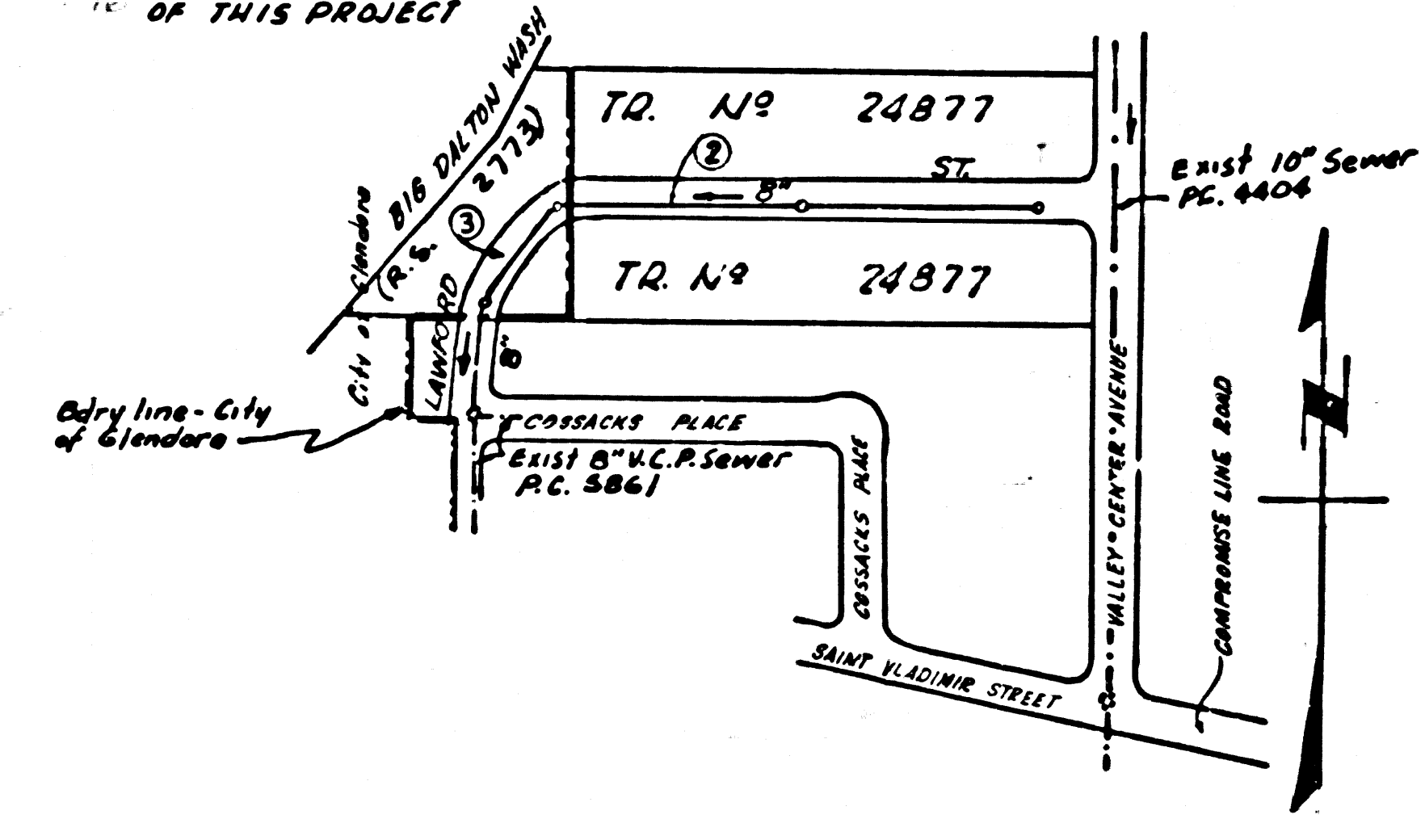
NOTES (CON'T)
 17. THE CONTRACTOR MUST OBTAIN A PERMIT TO EXCAVATE IN CITY STREETS FROM THE CITY OF GLENDORA

- NOTES
1. PROVIDE STAKES ON THE PROPERTY LINE OR PROPERTY LINES PRODUCED AT RIGHT ANGLES TO THE SEWER LINE AT THE CENTER LINE OF EACH MANHOLE.
 2. NO REPRESENTATIVE OF THE COUNTY ENGINEER WILL SURVEY OR LAY OUT ANY PORTION OF THE WORK.
 3. THE OWNER OR HIS AUTHORIZED REPRESENTATIVE SHALL FURNISH THE COUNTY ENGINEER WITH GRADE SHEETS AND STATIONING FOR ALL HOUSE LATERALS AND T BRANCHES AND SHALL PROVIDE STAKES FOR THEM AT THEIR PROPER LOCATIONS WITH STATIONING PLAINLY MARKED. ANY CHANGE IN LOCATION SHALL BE REQUESTED IN WRITING BY THE OWNER OR HIS REPRESENTATIVE.
 4. THE PRIVATE ENGINEER SHALL FURNISH THE HOUSE LATERAL DEPTH AT THE PROPERTY LINE BELOW THE TOP OF CURB ELEVATION FOR EACH HOUSE LATERAL ON THE GRADE SHEET.
 5. NO REVISIONS SHALL BE MADE IN THESE PLANS WITHOUT THE APPROVAL OF THE COUNTY ENGINEER.
 6. USE STANDARD MANHOLE FRAMES AND COVERS, S-117-A
 7. USE STANDARD STRENGTH PIPE
 8. USE "WEDGE-LOCK" OR "SPREAD SEAL" FOR ALL V.C.P. JOINTS PER SPEC. SEC. 38 & 48.
 9. RESURFACE ALL TRENCH WITHIN PAVED AREA TO MEET L.A. COUNTY ROAD DEPT. OR CALIF. STATE HIGHWAY REQUIREMENTS IN ACCORDANCE WITH PERMITS
 10. ENCASE FOUR FEET OF SEWER AT POINTS OF INTERFERENCE WITH POLES, CASE III, S-172.
 11. HOUSE LATERALS TO BE CONSTRUCTED WITH INVERTS AT PROPERTY LINE 6 FEET BELOW CURB GRADE
 12. ALL STRUCTURES SHALL BE BRICK SEWER STRUCTURES, S-104.
 13. FOR ALLOWABLE LEAKAGE TEST USE FORMULA NO. 1, SPEC. SEC. 54
 14. MANHOLE TOPS IN UNIMPROVED RIGHTS-OF-WAY TO BE SIX INCHES ABOVE FINISHED GRADE.
 15. THE CONTRACTOR SHALL NOTIFY THE CONSTRUCTION DIVISION BY TELEPHONE, MADISON 9-27, EXT. 8166/1 AT LEAST TWENTY-FOUR HOURS BEFORE STARTING ANY WORK UNDER THIS CONTRACT.
 16. STANDARD SPECIFICATIONS DATED OCTOBER 10 1960 APPLY IN THE CONSTRUCTION OF THIS PROJECT

NO CHARGE FOR CONNECTIONS
 7.77 ⁶⁴ Dennis 5-24-61

REVISION - Pages 2 and 3
 Lowered curb grades and inverts
 between Stations 2+52.97 and 11+00.00

APPROVED: W.C. Pindot 7-21-61
 OFFICE OF COUNTY ENGINEER



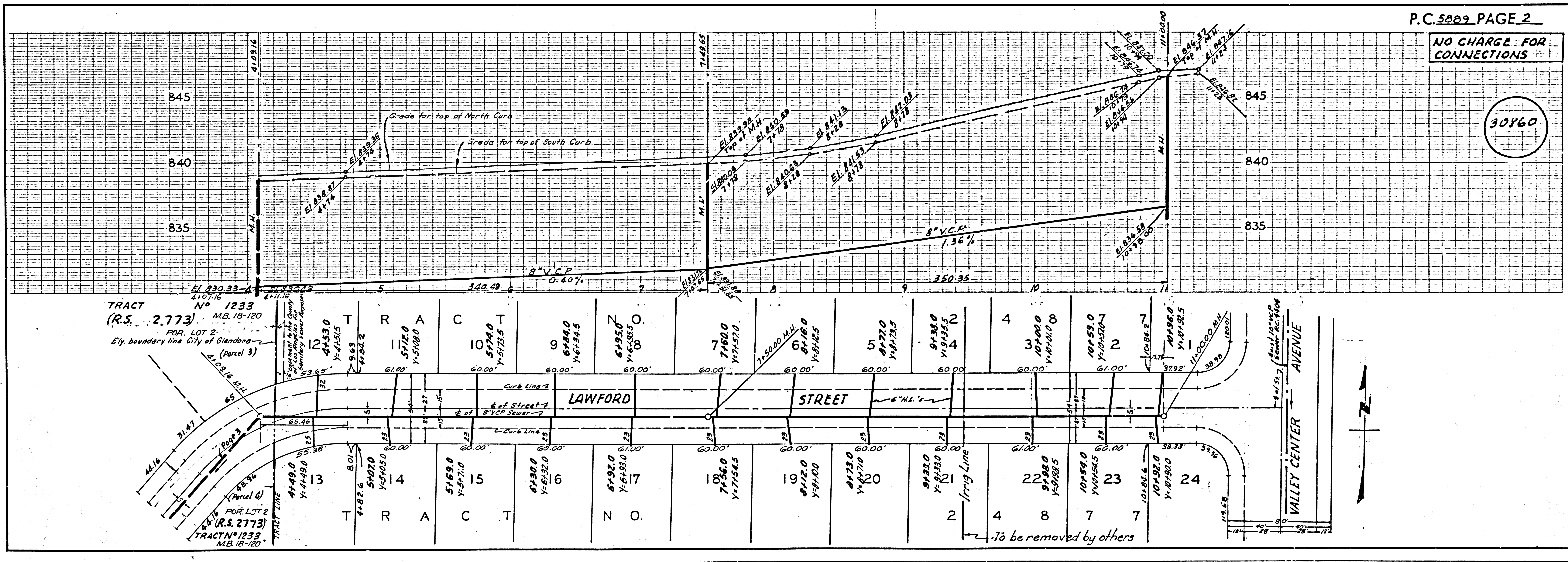
INDEX MAP
 SCALE: 1" = 300'
 TRACT NO. 24877
 R.C. 5889

NO CONNECTIONS FOR THE DISPOSAL OF INDUSTRIAL WASTES SHALL BE MADE TO SEWERS SHOWN ON THESE DRAWINGS WITHOUT WRITTEN PERMISSION FROM THE CHIEF ENGINEER AND GENERAL MANAGER OF THE COUNTY SANITATION DISTRICTS.

NOTE: GRADES TO WHICH THE IMPROVEMENT IS TO BE CONSTRUCTED ARE SHOWN ON PLANS AND PROFILES. GRADE POINTS FOR TOP OF CURBS, CENTER LINE OF STREETS, OR CENTER LINE OF ALLEYS ARE SHOWN BY CIRCLES ON PROFILES. AT ALL POINTS BETWEEN DESIGNATED POINTS THE GRADE SHALL BE ESTABLISHED SO AS TO CONFORM TO A STRAIGHT LINE DRAWN BETWEEN SAID DESIGNATED POINTS. ELEVATIONS ARE IN FEET ABOVE U.S.C. & G.S. SEA LEVEL DATUM OF 1929. THIS DRAWING AND THE DATA HEREON ARE HEREBY MADE A PART OF THE SPECIFICATIONS. WORK SHALL BE CONSTRUCTED ACCORDING TO SPECIFICATIONS ON FILE IN THE OFFICE OF THE COUNTY ENGINEER AND SHALL BE PROSECUTED ONLY IN THE PRESENCE OF THE COUNTY ENGINEER. BEFORE WORK CAN BE STARTED, THE CONTRACTOR MUST OBTAIN A PERMIT TO EXCAVATE IN COUNTY STREETS FROM THE COUNTY ROAD DEPT., DISTRICT OFFICE NO. 11 AND PAY A FEE TO THE COUNTY ENGINEER, ROOM 304 COUNTY ENGINEER BUILDING, 100 N. 5TH ST., GLENDORA, CALIF. TO COVER THE COST OF CONSTRUCTION INSPECTION AND RECORD PLANS. APPROVAL OF THIS PLAN BY THE COUNTY OF LOS ANGELES DOES NOT CONSTITUTE A REPRESENTATION AS TO THE ACCURACY OF THE LOCATION OF OR THE EXISTENCE OR NON-EXISTENCE OF ANY UNDERGROUND UTILITY PIPE, OR STRUCTURE WITHIN THE LIMITS OF THIS PROJECT. THIS NOTE APPLIES TO ALL PAGES. IF WORK IS TO BE DONE IN A STATE HIGHWAY, A PERMIT MUST BE OBTAINED FROM THE STATE OF CALIFORNIA, DIVISION OF HIGHWAYS, 130 SOUTH SPRING STREET.

COUNTY OF LOS ANGELES, CALIFORNIA
 APPROVED, JOHN A. LAMBE, COUNTY ENGINEER
 APPROVED, C. R. CAMPBELL, CHIEF ENGINEER
 BY: C. E. Pindot ASST. SANITATION ENGINEER
 BY: M. J. Pindot OFFICE ENGINEER
 CHECKED BY: J. K. Oide 5-24-61
 OFFICE OF COUNTY ENGINEER, REG. C. E. NO. 5406

SUBMITTED W.C. Pindot 5-27-61
 SAN DIMAS REGIONAL ENGINEER
 CITY OF GLENDORA
 APPROVED: W.C. Pindot CITY ENGINEER



P.C. 5889 - PAGE 2

NO CHARGE FOR CONNECTIONS

30160

NO CHARGE FOR CONNECTIONS

30861

