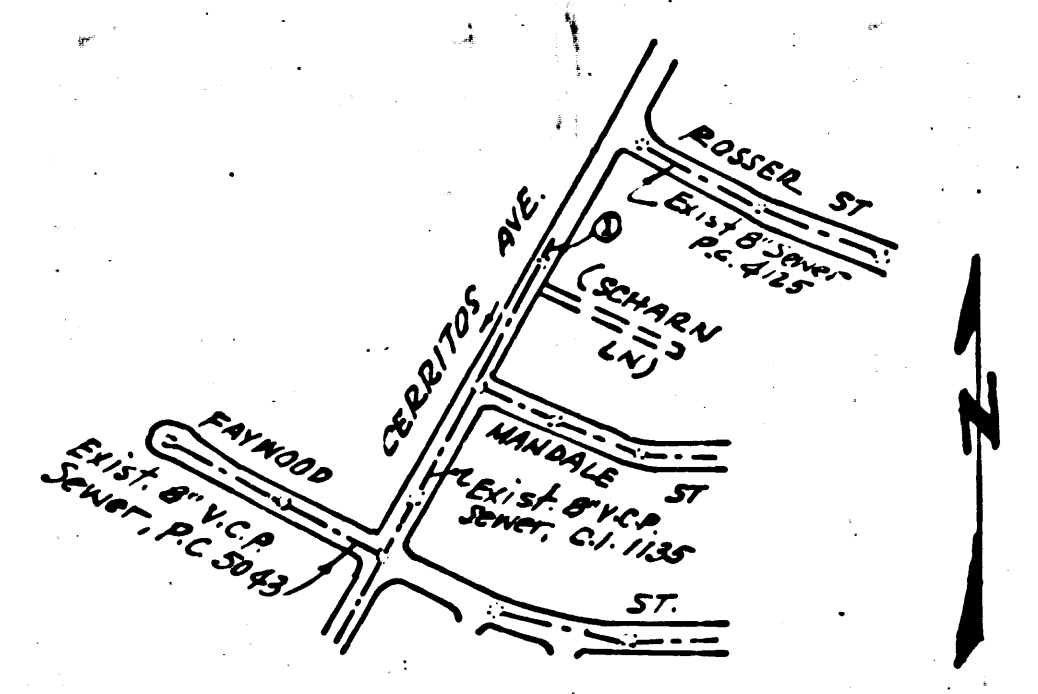
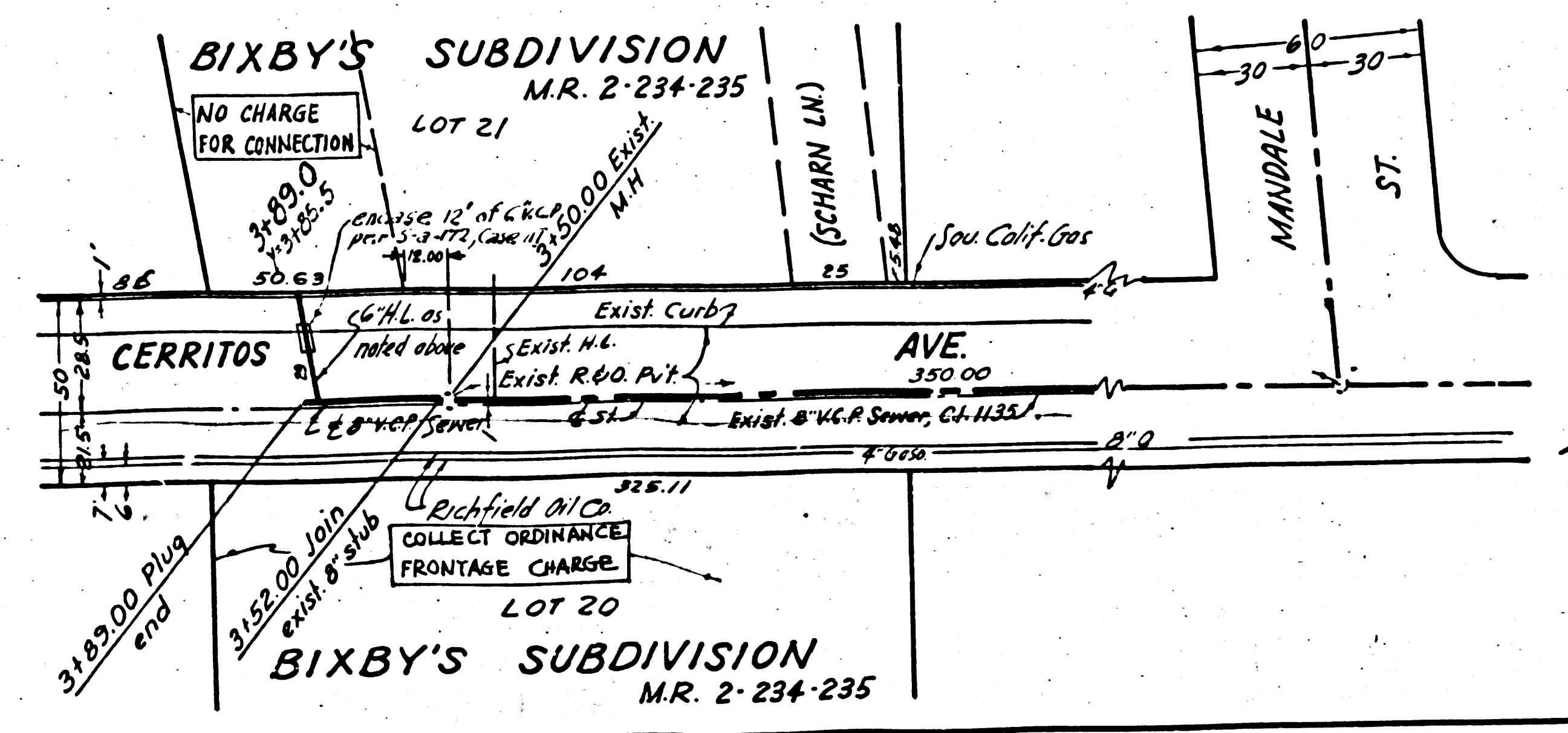


3/4" ST 3655 Elev. 80.085
 L.C. 8" near E end curb in front of 344 3119
 Compton Blvd. 1' 30" W of E. Beyond 1' 30" W of E
 Compton Blvd. 1' 2" W of E end curb.
 (NORWALK QUAD.)



INDEX MAP
 P.C. 5890
 SCALE 1"=600'



BELLFLOWER BLDG. DIST. NO. 4.07

- NOTES:
1. PROVIDE STAKES ON THE PROPERTY LINE OR PROPERTY LINES PRODUCED AT RIGHT ANGLES TO THE SEWER LINE AT THE CENTER LINE OF EACH MANHOLE.
 2. NO REPRESENTATIVE OF THE CITY ENGINEER WILL SURVEY OR LAY OUT ANY PORTION OF THE WORK.
 3. THE OWNER OR HIS AUTHORIZED REPRESENTATIVE SHALL FURNISH THE CITY ENGINEER WITH GRADE SHEETS AND STATIONING FOR ALL HOUSE LATERALS AND Y BRANCHES AND SHALL PROVIDE STAKES FOR THEM AT THEIR PROPER LOCATIONS WITH STATIONING PLAINLY MARKED. ANY CHANGE IN LOCATION SHALL BE REQUESTED IN WRITING BY THE OWNER OR HIS REPRESENTATIVE.
 4. THE PRIVATE ENGINEER SHALL FURNISH THE HOUSE LATERAL DEPTH AT THE PROPERTY LINE BELOW THE TOP OF CURB ELEVATION FOR EACH HOUSE LATERAL ON THE GRADE SHEET.
 5. NO REVISIONS SHALL BE MADE IN THESE PLANS WITHOUT THE APPROVAL OF THE CITY ENGINEER.
 6. USE STANDARD MANHOLE FRAMES AND COVERS, S-117A.
 7. USE STANDARD STRENGTH PIPE.
 8. USE CEMENT MORTAR OR "WEDGE-LOCK" OR "SPEED-SEAL" FOR ALL V.C.P. JOINTS PER SPEC'S. SECS. 14 & 15.
 9. RESURFACE ALL TRENCH WITHIN PAVED AREA TO MEET BELLFLOWER ROAD DEPT. OR CALIF. STATE HIGHWAY REQUIREMENTS IN ACCORDANCE WITH PERMITS.
 10. ENCASE FOUR FEET OF SEWER AT POINTS OF INTERFERENCE WITH POLES, CASE III, S-117C.
 11. HOUSE LATERALS TO BE CONSTRUCTED WITH 1/4" RISE PER FOOT TO PROPERTY LINE.
 12. ALL STRUCTURES SHALL BE BRICK SEWER STRUCTURES, S-104.
 13. FOR ALLOWABLE LEAKAGE TEST USE FORMULA NO. 1, SPEC'S. SEC. 54.
 14. MANHOLE TOPS IN UNIMPROVED RIGHTS-OF-WAY TO BE SIX INCHES ABOVE FINISHED GRADE.
 15. THE CONTRACTOR SHALL NOTIFY THE CONSTRUCTION DIVISION BY TELEPHONE, MADISON 3-4747, EXT. 848, AT LEAST TWENTY-FOUR HOURS BEFORE STARTING ANY WORK UNDER THIS CONTRACT.
 16. STANDARD SPECIFICATIONS DATED OCT. 10, 1960, ON FILE IN THE CITY, SHALL APPLY IN THE CONSTRUCTION OF THIS PROJECT.

COLLECT CHARGES
 AS INDICATED
Dillingham 5-31-61

PROFILE ALIGNMENT AND GRADE OF **P.C. 5890**
SANITARY SEWERS PAGE 1
 TO BE CONSTRUCTED IN
CERRITOS AVE. 31596
PRIVATE CONTRACT NO. 5890
 W.S. 33
 1 SHEET OF 1 PAGES
 SCALE: VERT. 1"=4'
 HORIZ. 1"=40'
 APRIL, 1961
 PREPARED IN THE OFFICES OF
OLSON SURVEYING SERVICE, INC.
 BY *Edward J. Phillips*
 REG. C. E. NO. 7920
 FOR LEGEND SEE PLAN NO. SA-64

NOTE:
 GRADES TO WHICH THIS IMPROVEMENT IS TO BE CONSTRUCTED ARE SHOWN ON PLANS AND PROFILES. GRADE POINTS FOR TOP OF CURBS, CENTER LINE OF STREETS, OR CENTER LINE OF ALLEYS ARE SHOWN BY CIRCLES ON PROFILES. AT ALL POINTS BETWEEN DESIGNATED POINTS THE GRADE SHALL BE ESTABLISHED SO AS TO CONFORM TO A STRAIGHT LINE DRAWN BETWEEN SAID DESIGNATED POINTS.
 ELEVATIONS ARE IN FEET ABOVE U.S.C. & G.S. SEA LEVEL DATUM OF 1929.
 THIS DRAWING AND THE DATA HEREON ARE HEREBY MADE A PART OF THE SPECIFICATIONS ON FILE IN THE OFFICE OF THE CITY ENGINEER AND SHALL BE PROSECUTED ONLY IN THE PRESENCE OF THE CITY ENGINEER.
 BEFORE WORK CAN BE STARTED THE CONTRACTOR MUST OBTAIN A PERMIT TO EXCAVATE IN CITY STREETS FROM THE BELLFLOWER ROAD DEPT., 2033 E. BELMONT ST. AND MAKE A DEPOSIT WITH THE CITY OF BELLFLOWER, 300 S. B. BELMONT ST. SUFFICIENT TO COVER THE COST OF CONSTRUCTION INSPECTION AND RECORD PLANS.
 APPROVAL OF THIS PLAN BY THE CITY OF BELLFLOWER DOES NOT CONSTITUTE A REPRESENTATION AS TO THE ACCURACY OF THE LOCATION OR THE EXISTENCE OR NON-EXISTENCE OF ANY UNDERGROUND UTILITY PIPE, OR STRUCTURE WITHIN THE LIMITS OF THIS PROJECT. THIS NOTE APPLIES TO ALL PAGES.
 IF WORK IS TO BE DONE IN A STATE HIGHWAY, A PERMIT MUST BE OBTAINED FROM THE STATE OF CALIFORNIA, DIVISION OF HIGHWAYS, 120 SOUTH SPRING STREET.

CITY OF BELLFLOWER, CALIFORNIA
 APPROVED, JOHN A. LAMBIE, CITY ENGINEER
 APPROVED, C.R. COMPTON, CHIEF ENGINEER
 BY *C.E. Dillingham* ASST. SANITATION ENGINEER
 BY *M. Dillingham* OFFICE ENGINEER
 CHECKED BY *W. Dillingham*
 OFFICE OF CITY ENGINEER, REG. C. E. NO. 5406
 SUBMITTED BY *John L. Eaton*
 LOS CERRITOS REGIONAL ENGINEER C.E. 3871

NO COMMITMENT FOR THE DEPOSAL OF
 SOLID WASTE SHALL BE MADE TO
 ANY LANDFILL OR OTHER DISPOSAL
 FACILITY UNLESS THE CONTRACTOR
 OBTAINS A PERMIT FROM THE
 CITY ENGINEER AND THE SUPERVISOR
 OF THE CITY ENGINEER'S DISTRICT.

P.C. 2890 CERRITOS
 FILE
 PROJECT OF THE