

B.M. N 150001
 L.A. County Trax. Mon. C-8A under cover
 105 ft. Sly. of South edge Asphalt Pavement
 Pacific Coast Highway 103.02 ft. W'y from
 L & T. in South Curb West end Topanga Canyon
 Bridge.
 El. 28.750 1955 Adj.

(Same as C.S.B.M. 48-63)

REVISION:
 Reduced width of Coastline Drive from
 80' to 60' between sta. 3+89.13 and sta. 21+64.90
 Realigned sewer and changed grades and
 elevations in above region as necessary
 Approved: Edward J. Smith 7-11-61
 E.E. 7267

ISSUE NO PERMITS UNTIL OUTLET
 TRUNK SEWER IS CONSTRUCTED

PRIVATE ENGINEER'S
 NOTICE TO CONTRACTOR

THE EXISTENCE AND LOCATION OF ANY UNDERGROUND UTILITY PIPES
 OR STRUCTURES SHOWN ON THESE PLANS ARE OBTAINED BY A SEARCH
 OF THE AVAILABLE RECORDS TO THE BEST OF OUR KNOWLEDGE.
 THERE ARE NO EXISTING UTILITIES EXCEPT AS SHOWN ON THIS MAP.
 THE CONTRACTOR IS REQUIRED TO TAKE PRECAUTIONARY MEASURES
 TO PROTECT THE UTILITY LINES SHOWN AND ANY OTHER LINES
 NOT OF RECORD OR NOT SHOWN ON THIS DRAWING.

NO CHARGE FOR
 CONNECTIONS

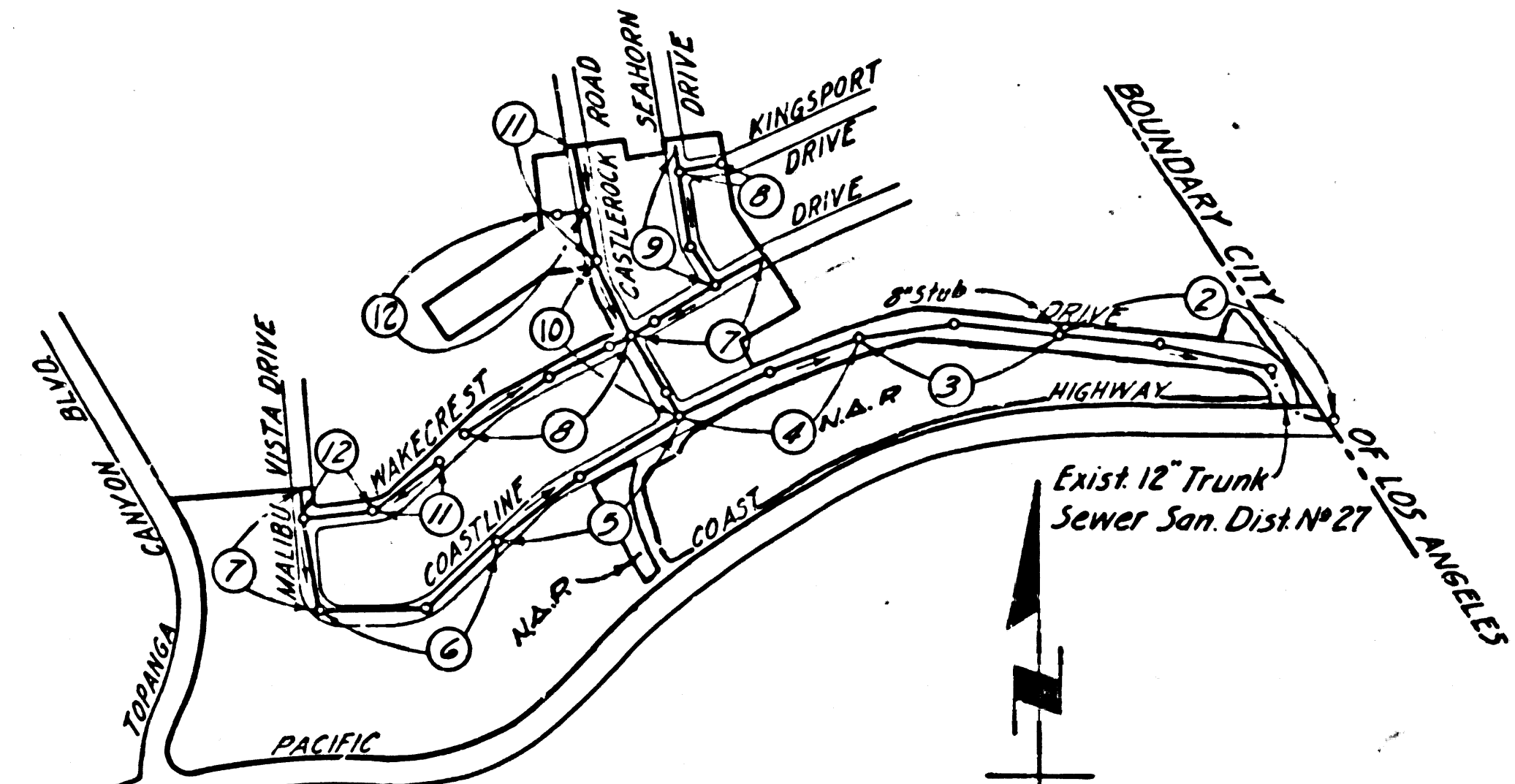
Edward J. Smith

REVISION: Raised Curbs & Sewers
 on Page 9

Edward J. Smith 1-17-62

REVISION: Lowered Sewer on
 Page 6

Edward J. Smith 1-26-62



BEFORE BREAKING INTO ANY EXISTING STRUCTURE
 AND BEFORE FINAL ACCEPTANCE OF THIS WORK,
 COUNTY SANITATION DISTRICT (DU 4-1281) SHALL
 BE NOTIFIED IN ORDER THAT REQUIRED INSPEC-
 TION CAN BE MADE.

NO CONNECTIONS FOR THE DISPOSAL OF
 INDUSTRIAL WASTES SHALL BE MADE TO
 SEWERS SHOWN ON THESE DRAWINGS
 WITHOUT WRITTEN PERMISSION FROM THE
 CHIEF ENGINEER AND GENERAL MANAGER
 OF THE COUNTY SANITATION DISTRICTS.

DOUBLE SCALE
 MALIBU BLDG. DIST. NO. 9.2

PROFILE ALIGNMENT AND GRADE OF
 SANITARY SEWERS PAGE 1
 TO BE CONSTRUCTED IN
 P.C. 5894
 J.N. 0356.00

TRACT NO 26458

PRIVATE CONTRACT NO. 5894

W.S. 58

6 SHEETS; 12 PAGES

SCALE: VERT. 1"=8' HORIZ. 1"=40'

MARCH, 1961

PREPARED IN THE OFFICES OF

ENGINEERING SERVICE CORPORATION

By: R.F. Young REG. C. E. NO. 2632

FOR LEGEND SEE PLAN NO. S-A-64

31773

- NOTES:
- PROVIDE STAKES ON THE PROPERTY LINE OR PROPERTY LINES PRODUCED AT RIGHT ANGLES TO THE SEWER LINE AT THE CENTER LINE OF EACH MANHOLE.
 - NO REPRESENTATIVE OF THE COUNTY ENGINEER WILL SURVEY OR LAY OUT ANY PORTION OF THE WORK.
 - THE OWNER OR HIS AUTHORIZED REPRESENTATIVE SHALL FURNISH THE COUNTY ENGINEER WITH GRADE SHEETS AND STATIONING FOR ALL HOUSE LATERALS AND Y BRANCHES AND SHALL PROVIDE STAKES FOR THEM AT THEIR PROPER LOCATIONS WITH STATIONING PLAINLY MARKED. ANY CHANGE IN LOCATION MUST BE REQUESTED BY THE OWNER OR HIS REPRESENTATIVE.
 - THE PRIVATE ENGINEER SHALL FURNISH THE HOUSE LATERAL DEPTH AT THE PROPERTY LINE BELOW THE TOP OF CURB ELEVATION FOR EACH HOUSE LATERAL ON THE GRADE SHEET.
 - NO REVISIONS SHALL BE MADE IN THESE PLANS WITHOUT THE APPROVAL OF THE COUNTY ENGINEER.
 - USE STANDARD MANHOLE FRAMES AND COVERS, S-117.
 - USE STANDARD STRENGTH PIPE EXCEPT AS NOTED.
 - USE CEMENT MORTAR OR "WEDGE LOCK" OR "SPEED SEAL" FOR ALL V.C.P. JOINTS PER SPECS., SECS. 36 & 48.
 - RESURFACE ALL TRENCH WITHIN PAVED AREA TO MEET L.A. COUNTY ROAD DEPT. OR CALIF. STATE HIGHWAY REQUIREMENTS IN ACCORDANCE WITH PERMITS.
 - ENCASE FOUR FEET OF SEWER AT POINTS OF INTERFERENCE WITH POLES, CASE III, S-172.
 - HOUSE LATERALS TO BE CONSTRUCTED WITH INVERTS AT PROPERTY LINE 6 FEET BELOW CURB GRADE EXCEPT AS NOTED.
 - ALL STRUCTURES SHALL BE BRICK SEWER STRUCTURES, S-104.
 - FOR ALLOWABLE LEAKAGE TEST USE FORMULA NO. 1, SPECS., SEC. 54.
 - MANHOLE TOPS IN UNIMPROVED RIGHTS-OF-WAY TO BE SIX INCHES ABOVE FINISHED GRADE.
 - THE CONTRACTOR SHALL NOTIFY THE CONSTRUCTION DIVISION BY TELEPHONE, MADISON 9-00, EXT. 81-57 AT LEAST TWENTY-FOUR HOURS BEFORE STARTING ANY WORK UNDER THIS CONTRACT.
 - NO CONSTRUCTION WILL BE PERMITTED IN FIELD AREAS UNLESS ACCEPTABLE CERTIFICATION IS SUBMITTED TO THE CONSTRUCTION DIVISION OF THE COUNTY ENGINEER'S DEPARTMENT THAT RELATIVE COMPACTION IS GREATER THAN 80%
 - (1) IF CONSTRUCTION IS LESS THAN 80% THE SEWER MUST BE GRADED AS SHOWN ON THE PLANS PER S-9-108
 - (2) IF CONSTRUCTION IS 80% OR GREATER GRADING IS NOT REQUIRED. HOWEVER, JOINT CONSTRUCTION MUST BE SUBSTITUTED FOR CEMENT MORTAR FOR ALL JOINTS IN FILLED AREAS. IF CONSTRUCTION IS 80% OR GREATER SPECIAL M.H. BASES ARE NOT REQUIRED.
 - SPECIFICATIONS DATED OCT. 10, 1960 APPLY IN THE CONSTRUCTION OF THIS PROJECT.

ENGINEERING SERVICE CORPORATION		1127 W. WASHINGTON BLVD.		RI. 9-7281	
LOS ANGELES 15, CALIF.		TRACED BY: W.P.B.		DES'G'D BY: E.M.P.D.H.	
REVISIONS		CK'D BY:		SUBMITTED:	
SUB STRUCTURES OK'D		W. O. NO.		DWG. NO.	
		DATE		SCALE	
		L.B.		P.B.	
		7-37-61		2-61	
		As Noted			

NOTE:
 GRADES TO WHICH THIS IMPROVEMENT IS TO BE CONSTRUCTED ARE SHOWN ON PLANS AND PROFILES. GRADE POINTS FOR TOP OF CURB, CENTER LINE OF STREETS, OR CENTER LINE OF ALLEYS ARE SHOWN BY CIRCLES ON PROFILES. AT ALL POINTS BETWEEN DESIGNATED POINTS THE GRADE SHALL BE ESTABLISHED SO AS TO CONFORM TO A STRAIGHT LINE DRAWN BETWEEN SAID DESIGNATED POINTS.
 ELEVATIONS ARE IN FEET ABOVE U.S.C. & G.S. SEA LEVEL DATUM OF 1929.
 THIS DRAWING AND THE DATA HEREON ARE HEREBY MADE A PART OF THE SPECIFICATIONS.
 WORK SHALL BE CONSTRUCTED ACCORDING TO SPECIFICATIONS ON FILE IN THE OFFICE OF THE COUNTY ENGINEER AND SHALL BE PROSECUTED ONLY IN THE PRESENCE OF THE COUNTY ENGINEER.
 BEFORE WORK CAN BE STARTED, THE CONTRACTOR MUST OBTAIN A PERMIT TO EXCAVATE IN COUNTY STREETS FROM THE L.A. COUNTY ROAD DEPT., DISTRICT OFFICE NO. 3, AND PAY A FEE TO THE COUNTY ENGINEER, ROOM 510 COUNTY ENGINE BLDG., 108 W. 2ND STREET, SUFFICIENT TO COVER THE COST OF CONSTRUCTION INSPECTION AND RECORD PLANS.
 APPROVAL OF THIS PLAN BY THE COUNTY OF LOS ANGELES DOES NOT CONSTITUTE A REPRESENTATION AS TO THE ACCURACY OF THE LOCATION OF OR THE EXISTENCE OR NON-EXISTENCE OF ANY UNDERGROUND UTILITY PIPE, OR STRUCTURE WITHIN THE LIMITS OF THIS PROJECT. THIS NOTE APPLIES TO ALL PAGES.
 IF WORK IS TO BE DONE IN A STATE HIGHWAY, A PERMIT MUST BE OBTAINED FROM THE STATE OF CALIFORNIA, DIVISION OF HIGHWAYS, 120 SOUTH SPRING STREET.

COUNTY OF LOS ANGELES, CALIFORNIA

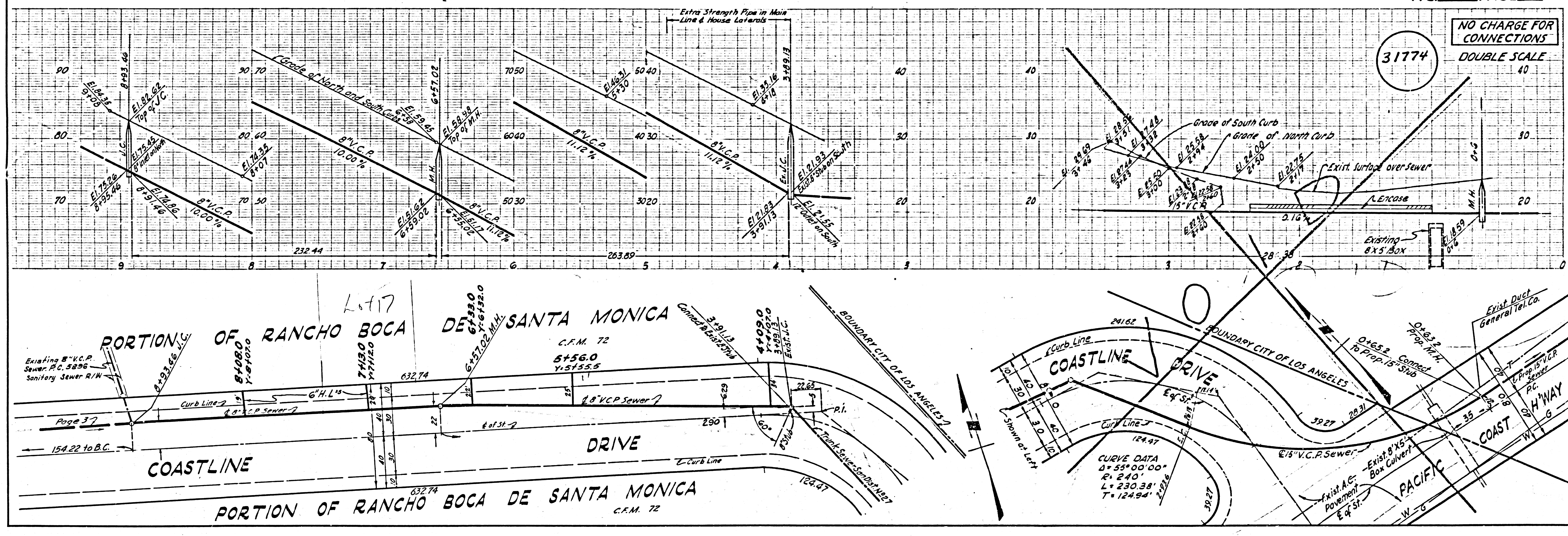
APPROVED, JOHN A. LAMBIE, COUNTY ENGINEER
 APPROVED, C.R. COMPTON, CHIEF ENGINEER
 BY: E.E. [Signature] ASST. SANITATION ENGINEER
 BY: [Signature] OFFICE ENGINEER
 CHECKED BY: R.F. Young 7-13-61
 OFFICE OF COUNTY ENGINEER, REG. C. E. NO. 11636
 SUBMITTED: Jack C. Langston, PALMS VERDES-CENTINELA VALLEY REGIONAL ENGINEER

P.C. 5894 PAGE 2

NO CHARGE FOR
 CONNECTIONS

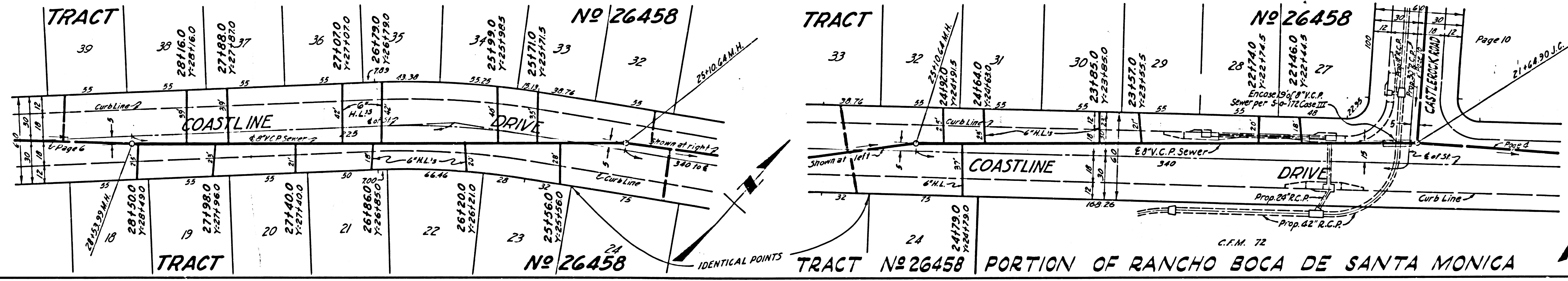
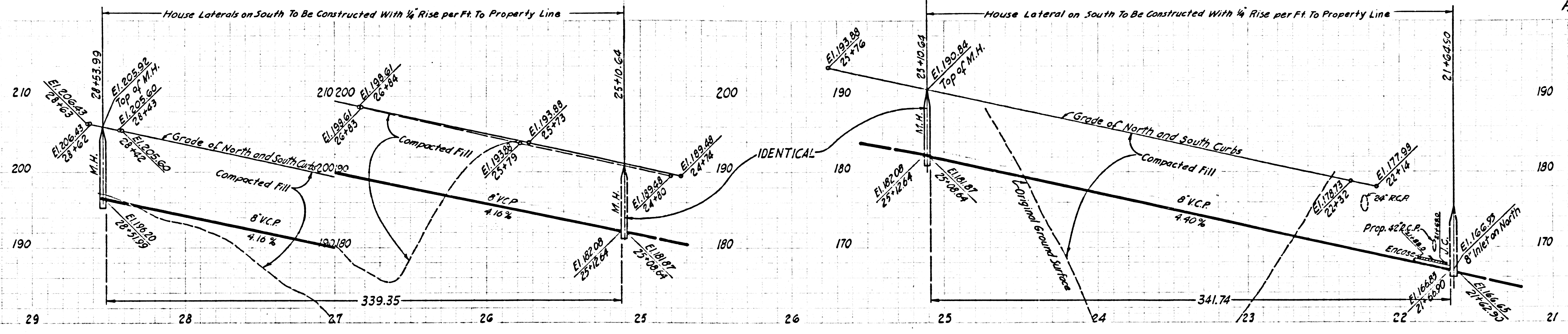
31774

DOUBLE SCALE



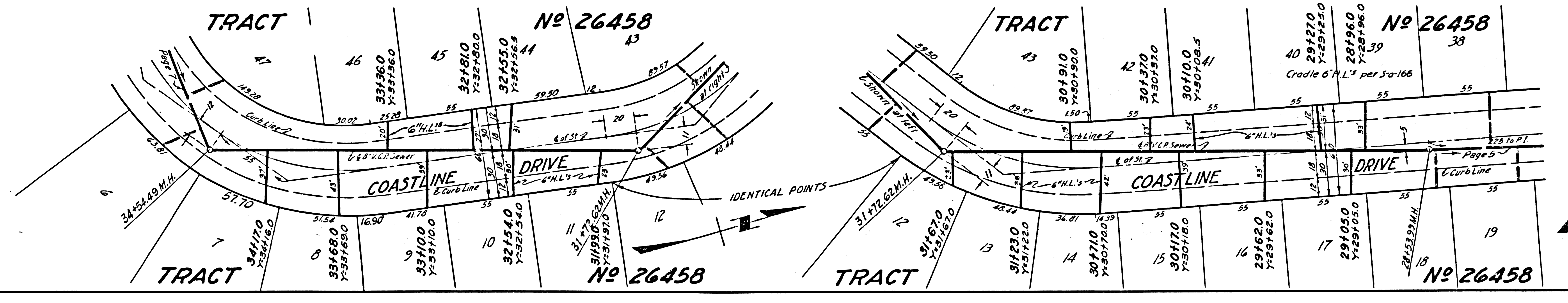
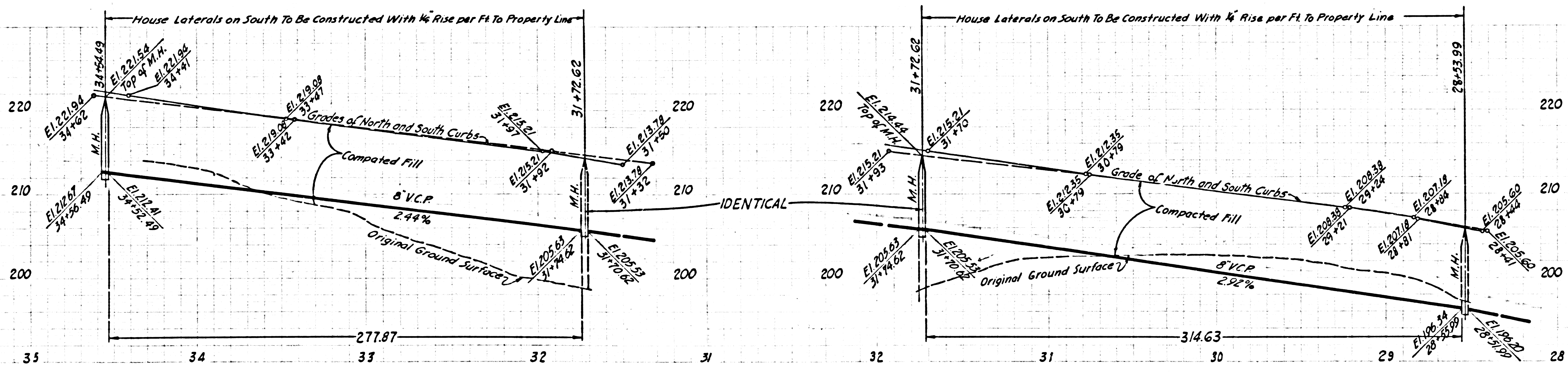
DOUBLE SCALE
NO CHARGE FOR
CONNECTIONS

31777



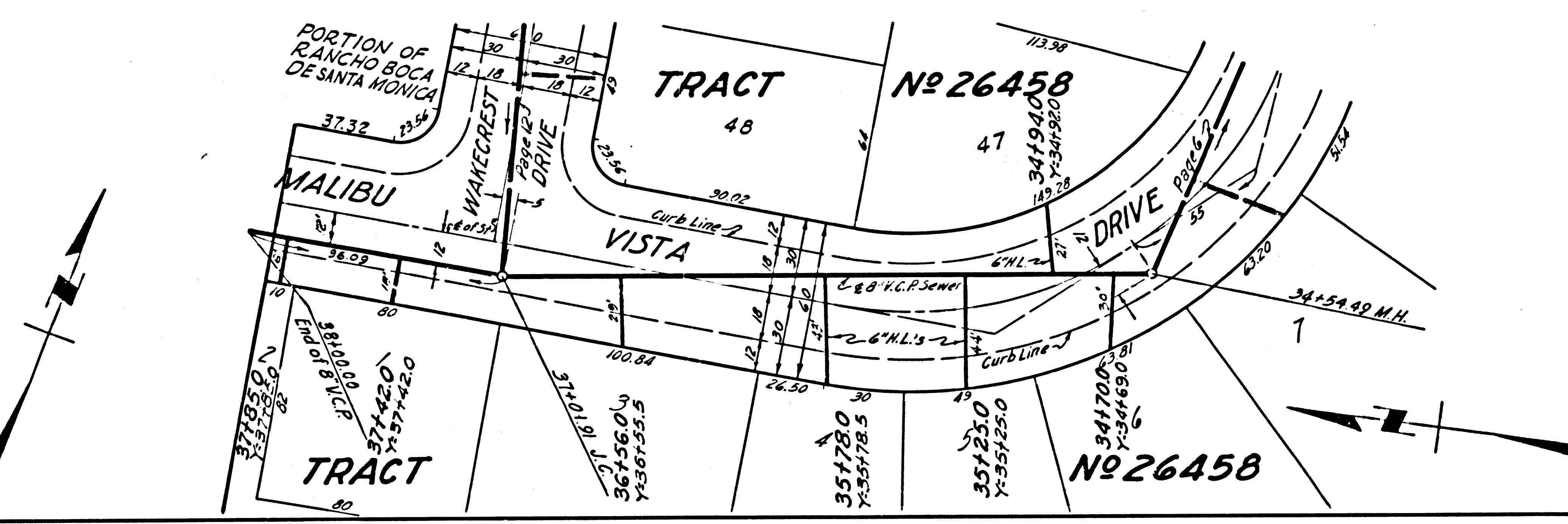
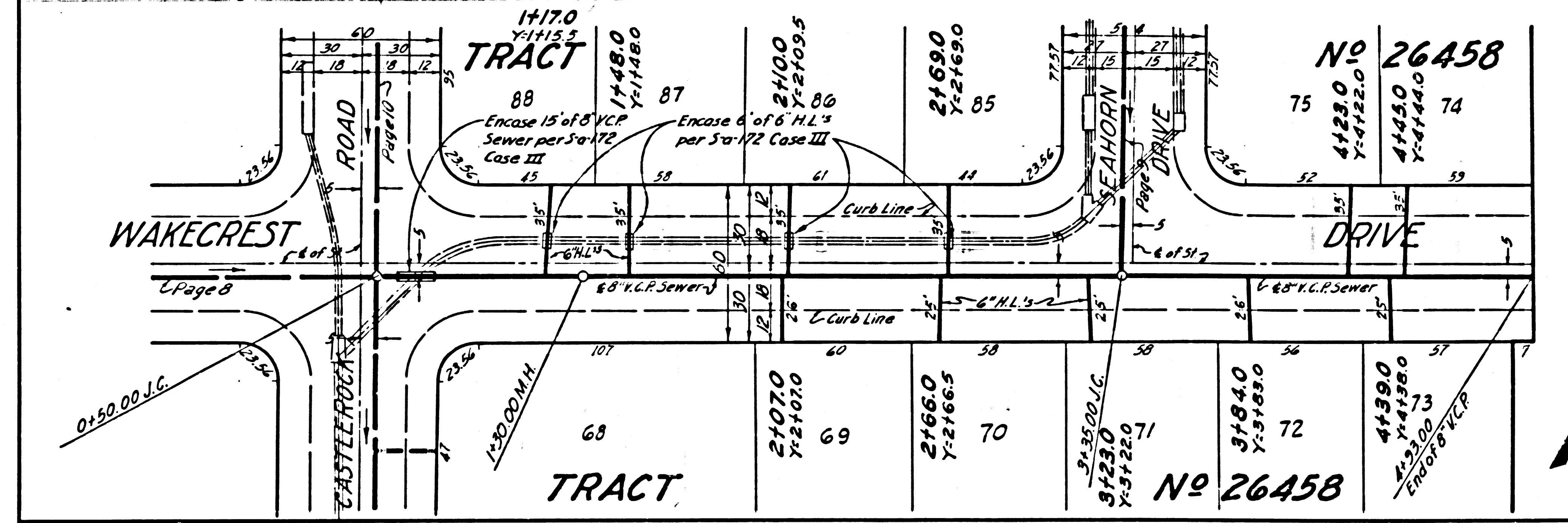
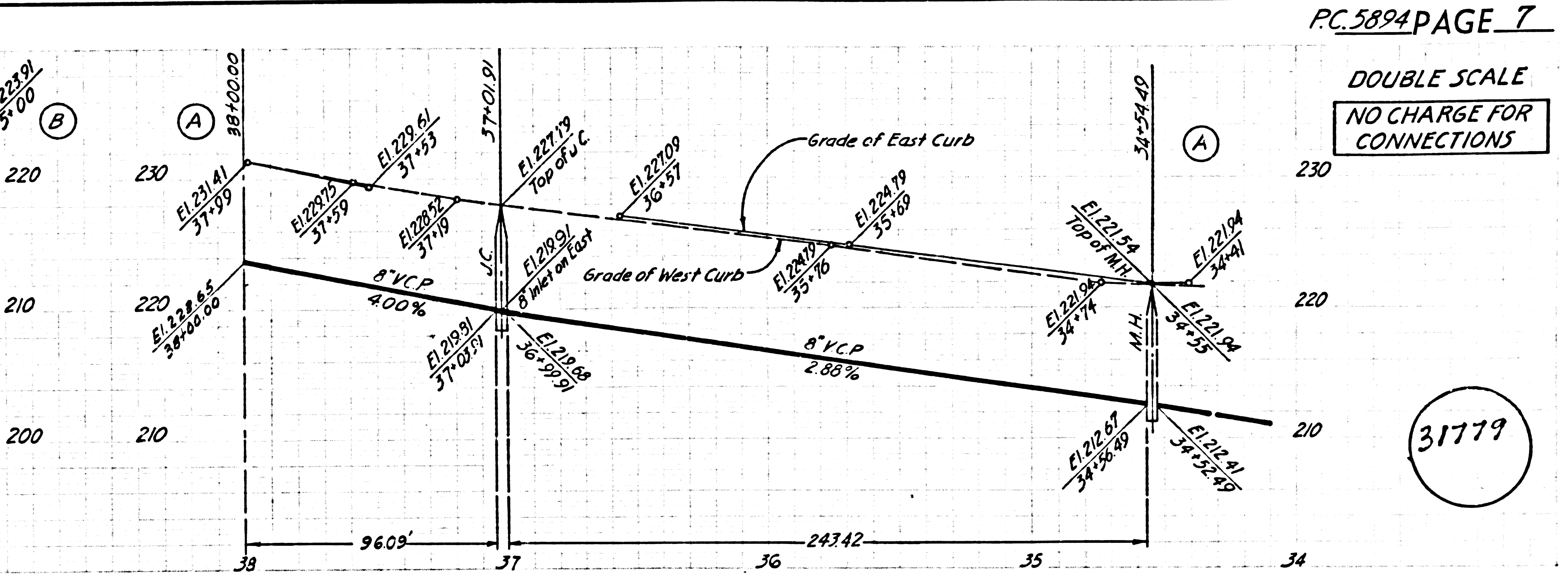
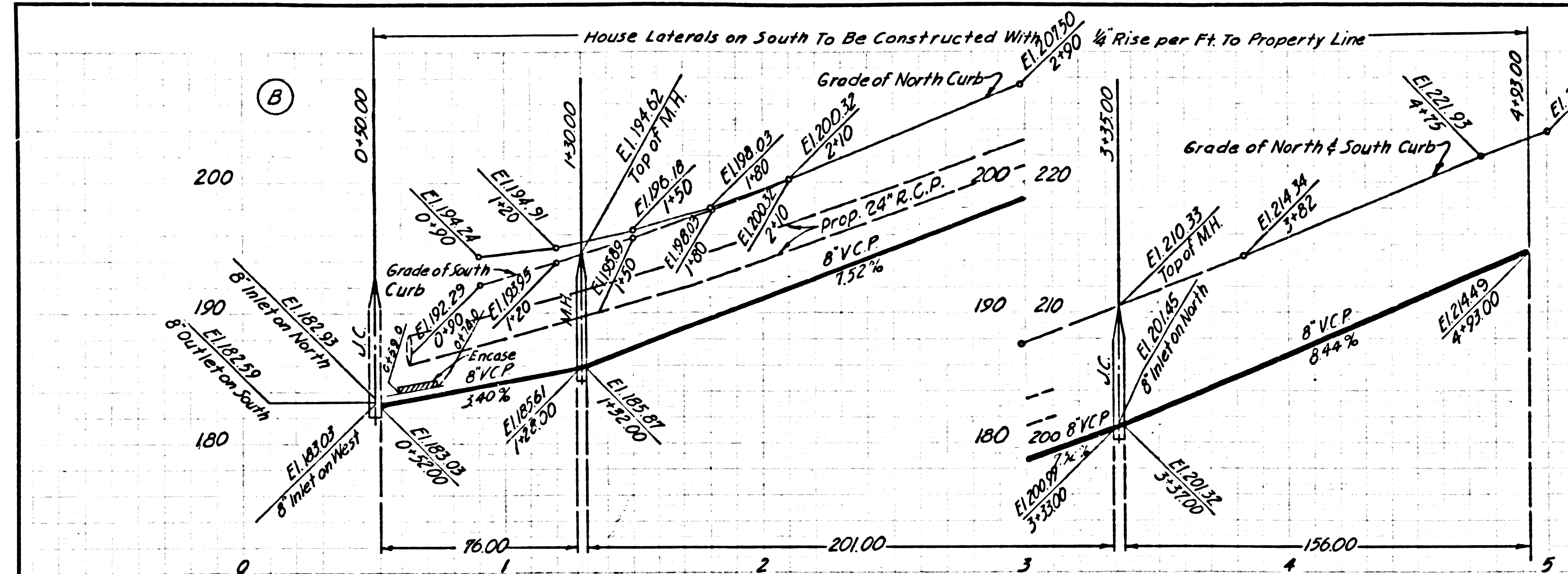
DOUBLE SCALE
NO CHARGE FOR
CONNECTIONS

31778



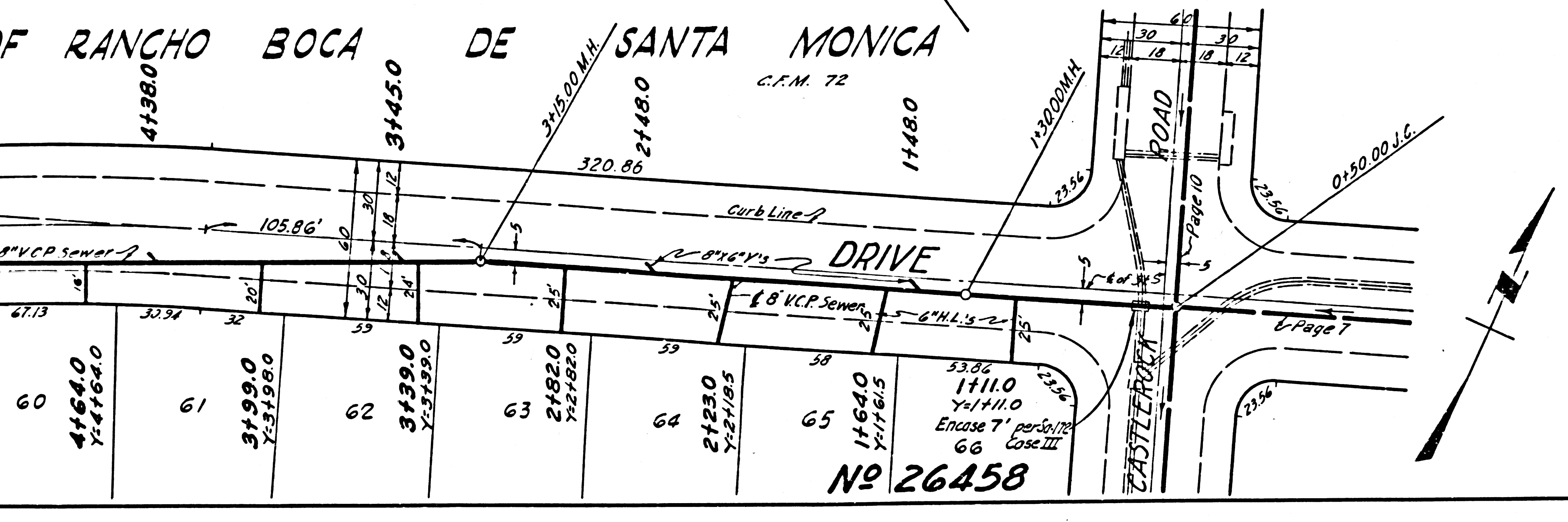
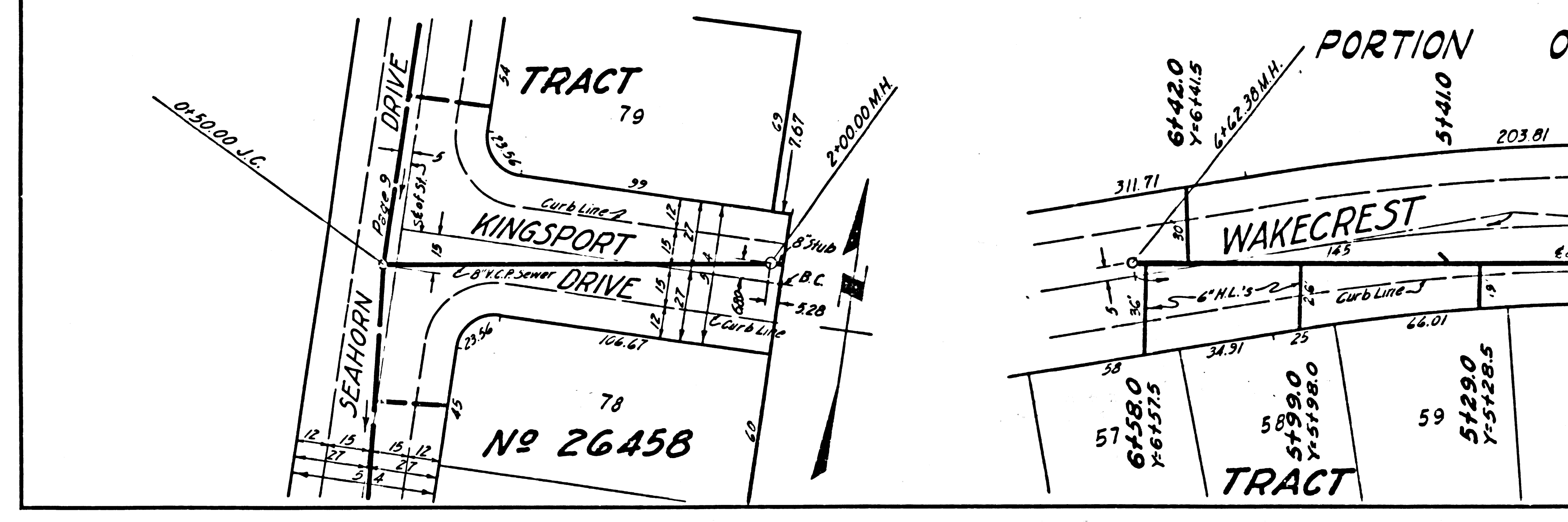
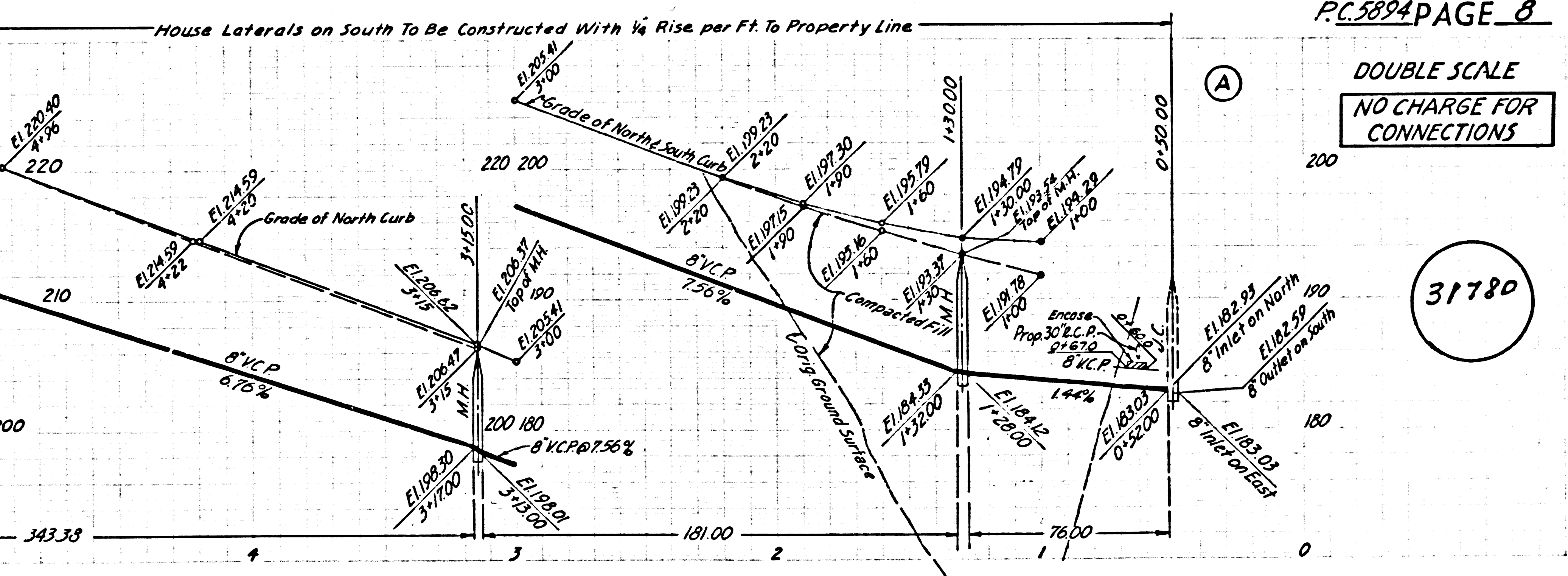
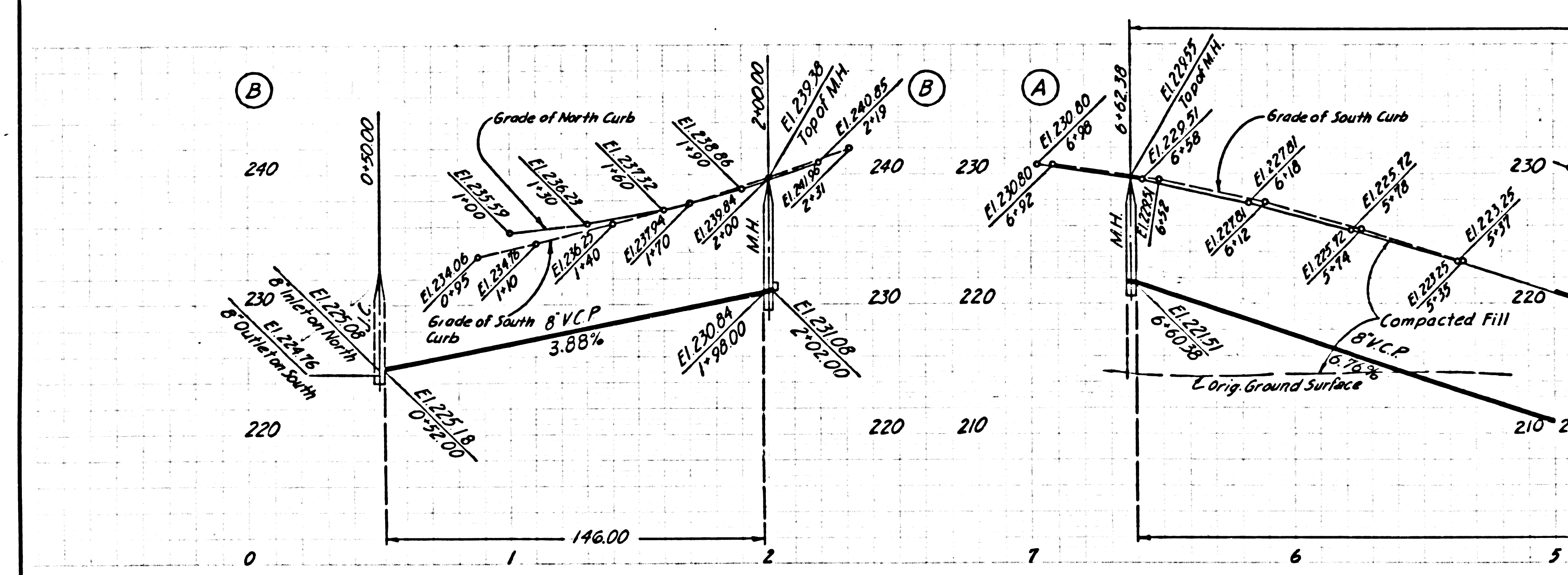
DOUBLE SCALE
NO CHARGE FOR
CONNECTIONS

31779



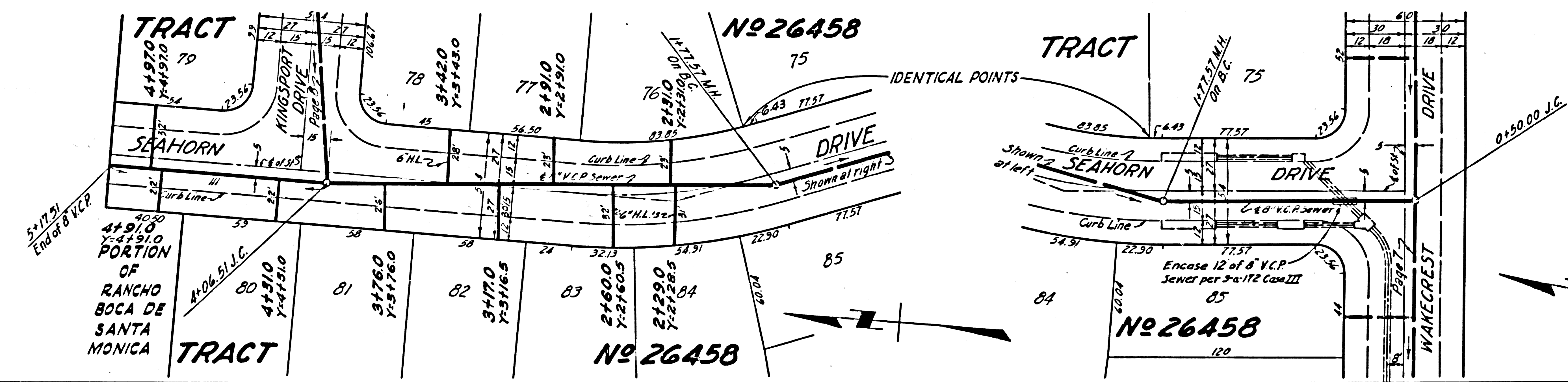
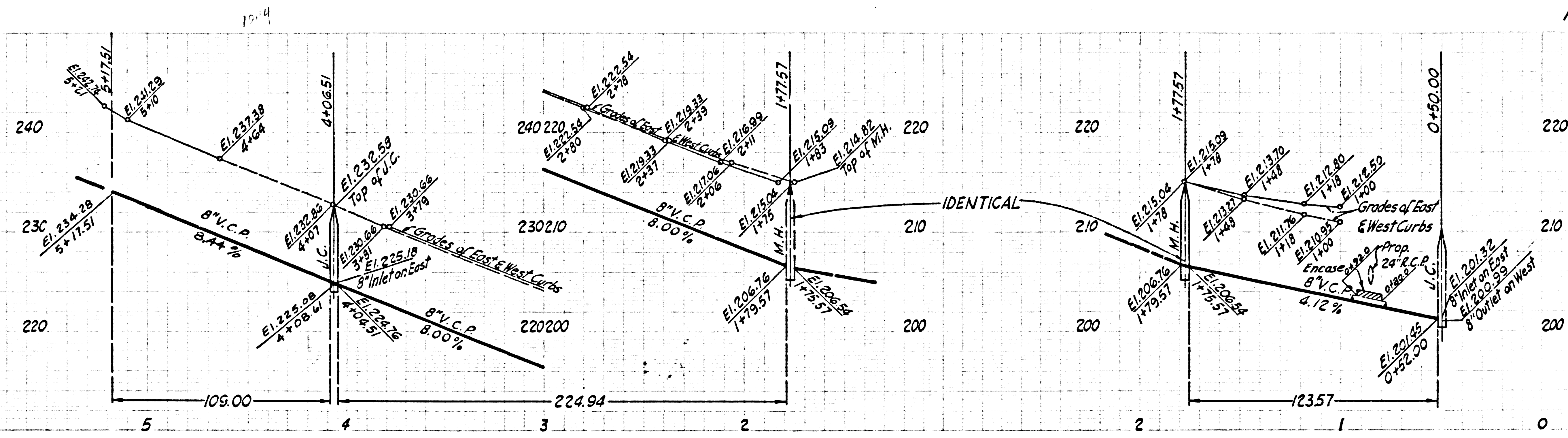
DOUBLE SCALE
NO CHARGE FOR
CONNECTIONS

31780



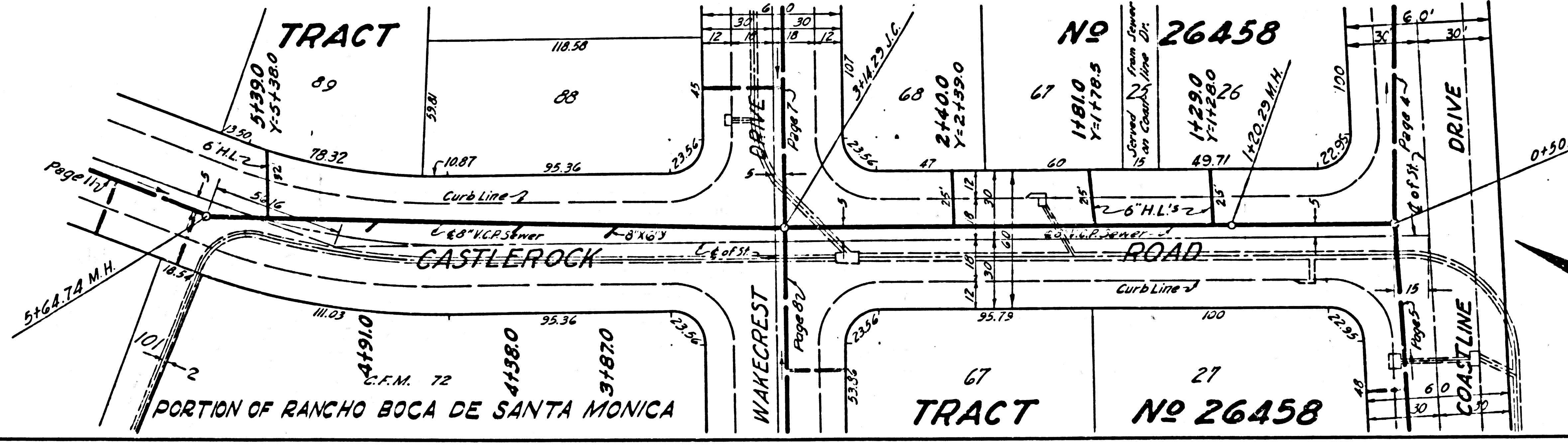
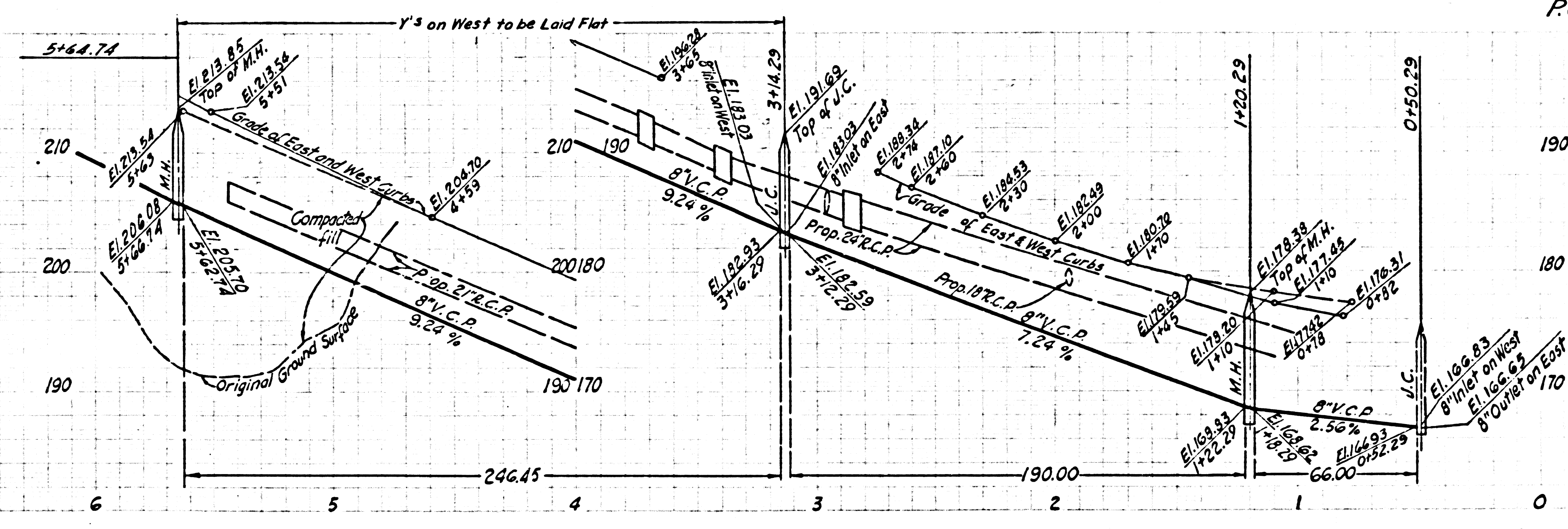
DOUBLE SCALE
NO CHARGE FOR
CONNECTIONS

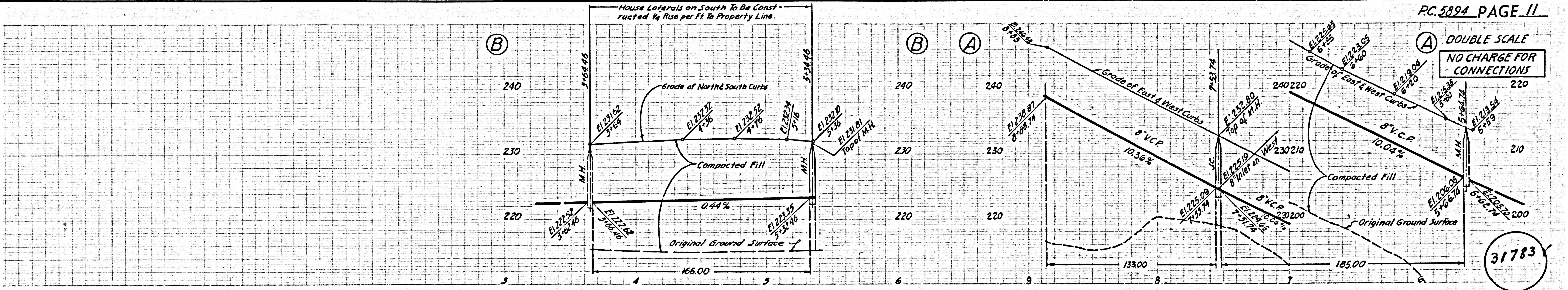
31781



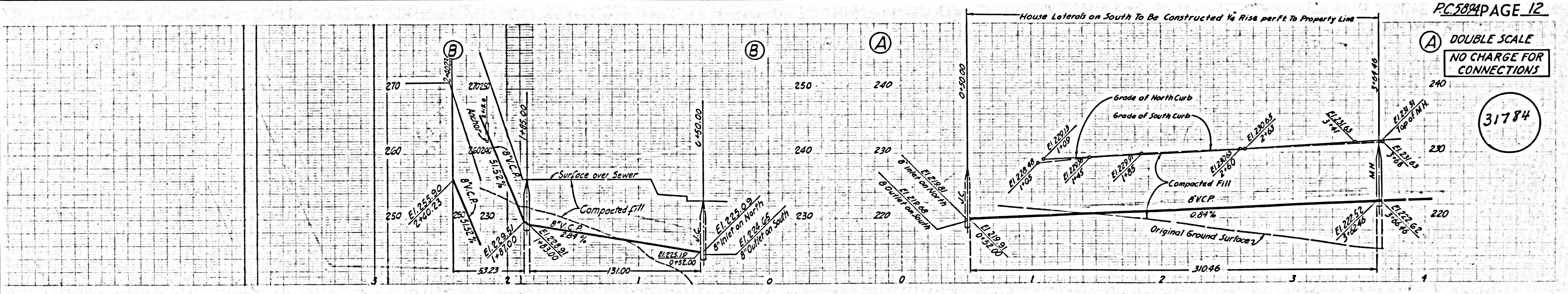
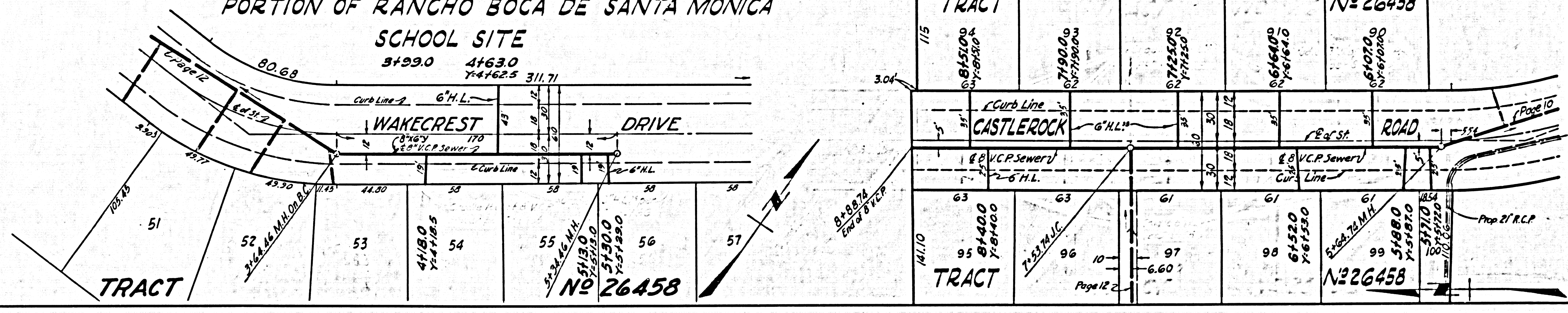
DOUBLE SCALE
NO CHARGE FOR
CONNECTIONS

31782





PORTION OF RANCHO BOCA DE SANTA MONICA
SCHOOL SITE



PORTION OF RANCHO BOCA DE SANTA MONICA
SCHOOL SITE

