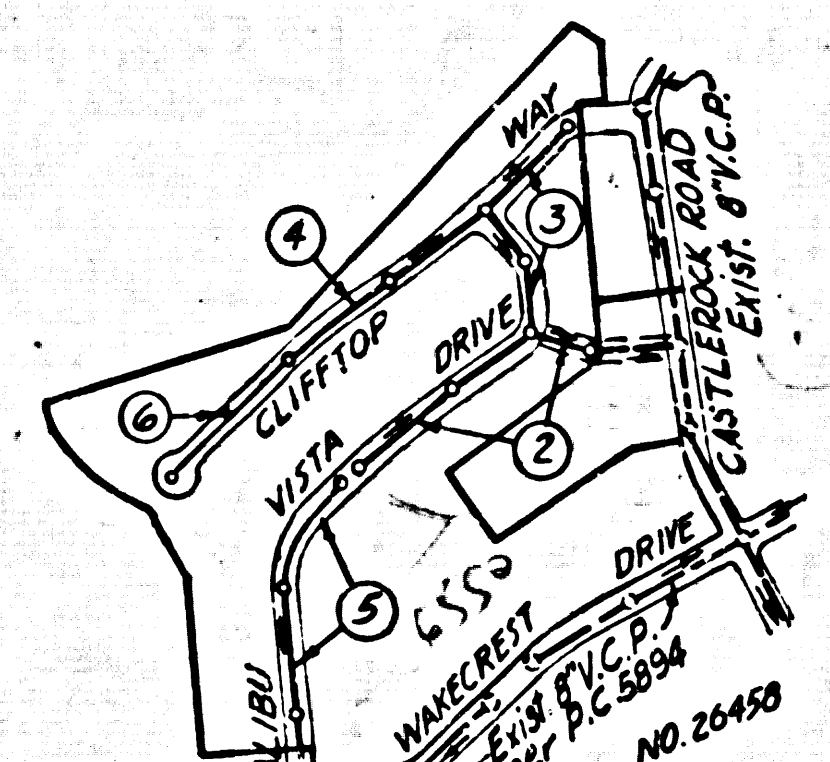


B.M. No. 150001
 L.A. County Trax. Mon. C-8A under cover
 105 ft. Sly. of South edge Asphalt Pavement
 Pacific Coast Highway 103.02 ft. W'n. from
 L. & T. in South Curb West end Topanga Canyon
 Bridge
 El. 28.150 1955 Adj.

(Same as C.S.B.M. 48-63)

REVISIONS
 Lowered Spewer Grade & Del. Storm
 Drain Profile as MALIBU VISTA DRIVE Pages 5 & 6
 Eliminated manhole & revised
 alignment page 5
 Added page 6, Cliff Top Way,
 Revised lot numbers.
 Revised alignment page 5 from
 Sta. 41+78.23 to Sta. 42+36.55.
 --- J.R. Lawrence
 E.E. 4/30/65 11-11-65
 Approved Ralph Schafe. 11/19/65



INDEX MAP
 TRACT NO. 26461
 SCALE: 1"=600'
 P.C. 5895

NO CHARGE FOR CONNECTIONS
 S. Curtis 11-61

PRIVATE ENGINEER'S NOTICE TO CONTRACTOR

THE EXISTENCE AND LOCATION OF ANY UNDERGROUND UTILITY PIPES OR STRUCTURES SHOWN ON THESE PLANS ARE OBTAINED BY A SEARCH OF THE AVAILABLE RECORDS TO THE BEST OF OUR KNOWLEDGE. THERE ARE NO EXISTING UTILITIES EXCEPT AS SHOWN ON THIS MAP. THE CONTRACTOR IS REQUIRED TO TAKE PRECAUTIONARY MEASURES TO PROTECT THE UTILITY LINES SHOWN AND ANY OTHER LINES NOT OF RECORD OR NOT SHOWN ON THIS DRAWING.

DOUBLE SCALE MALIBU BLDG. DIST. NO. 9.2

PROFILE ALIGNMENT AND GRADE OF P.C. 5895
SANITARY SEWERS PAGE 1
 TO BE CONSTRUCTED IN J.N. 0356.01
TRACT No 26461

PRIVATE CONTRACT NO. 5895

W.S. 58
 3 SHEETS, 6 PAGES
 SCALE: VERT. 1"=4' HORIZ. 1"=40'
 MARCH 1961
 PREPARED IN THE OFFICES OF
ENGINEERING SERVICE CORPORATION

36097

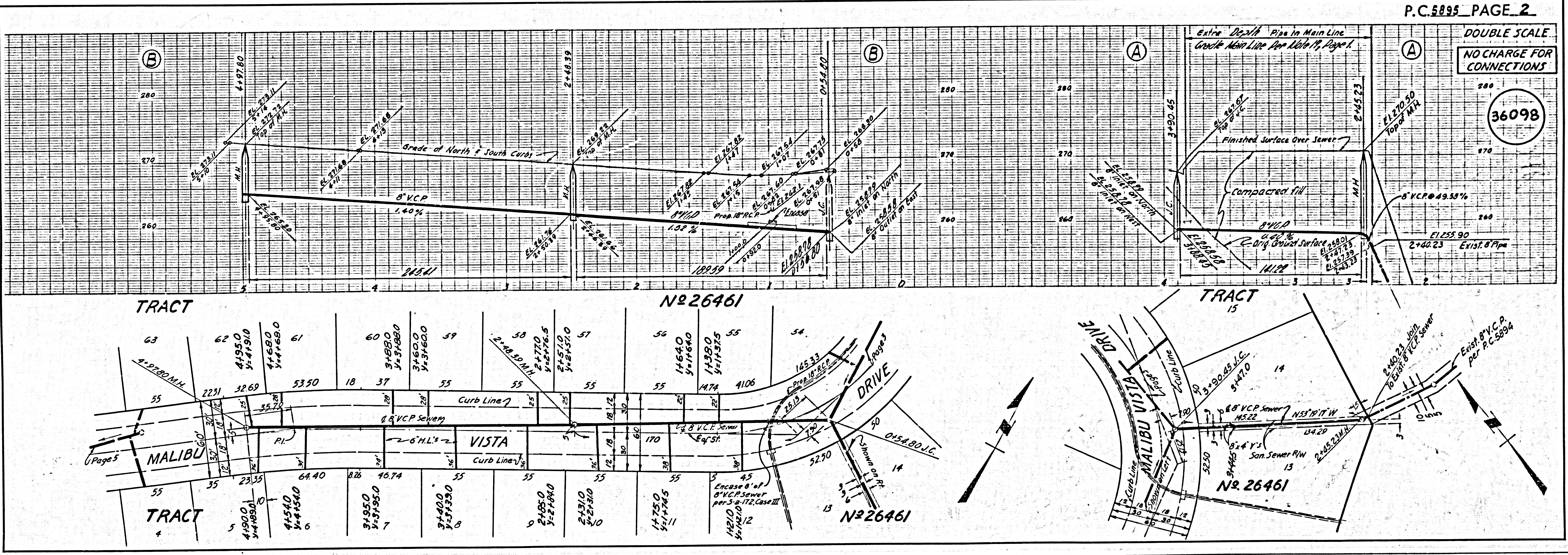
- NOTES**
- PROVIDE STAKES ON THE PROPERTY LINE OR PROPERTY LINES PRODUCED AT RIGHT ANGLES TO THE SEWER LINE AT THE CENTER LINE OF EACH MANHOLE.
 - NO REPRESENTATIVE OF THE COUNTY ENGINEER WILL SURVEY OR LAY OUT ANY PORTION OF THE WORK.
 - THE OWNER OR HIS AUTHORIZED REPRESENTATIVE SHALL FURNISH THE COUNTY ENGINEER WITH GRADE SHEETS AND STATIONING FOR ALL HOUSE LATERALS AND T-BRANCHES AND SHALL PROVIDE STAKES FOR THEM AT THEIR PROPER LOCATIONS WITH STATIONING PLAINLY MARKED. ANY CHANGE IN LOCATION SHALL BE REQUESTED IN WRITING BY THE OWNER OR HIS REPRESENTATIVE.
 - THE PRIVATE ENGINEER SHALL FURNISH THE HOUSE LATERAL DEPTH AT THE PROPERTY LINE BELOW THE TOP OF CURB ELEVATION FOR EACH HOUSE LATERAL ON THE GRADE SHEET.
 - NO REVISIONS SHALL BE MADE IN THESE PLANS WITHOUT THE APPROVAL OF THE COUNTY ENGINEER.
 - USE STANDARD MANHOLE FRAMES AND COVERS, S-117, EXCEPT AS NOTED.
 - USE STANDARD STRENGTH PIPE EXCEPT AS NOTED.
 - USE **MECHANICAL COMPRESSION** FOR ALL V.C.P. JOINTS PER SPEC., SECT. 34 & 44 & 49.
 - RESURFACE ALL THINGS WITHIN PAVED AREA TO MEET L.A. COUNTY ROAD DEPT. OF CALIF. STATE HIGHWAY REQUIREMENTS IN ACCORDANCE WITH PERMITS.
 - ENCASE FOUR FEET OF SEWER AT POINTS OF INTERFERENCE WITH POLES, CASE III, S-172.
 - HOUSE LATERALS TO BE CONSTRUCTED WITH INVERTS AT PROPERTY LINE 6 FEET BELOW CURB GRADE.
 - ALL STRUCTURES SHALL BE BRICK SEWER STRUCTURES, S-194, EXCEPT AS NOTED.
 - FOR ALLOWABLE LEAKAGE TEST USE FORMULA NO. 2, SPEC., SEC. 54.
 - MANHOLE TOPS IN UNIMPROVED RIGHTS-OF-WAY TO BE SIX INCHES ABOVE FINISHED GRADE.
 - THE CONTRACTOR SHALL NOTIFY THE CONSTRUCTION DIVISION BY TELEPHONE, MADISON 9-4747, EXT. 81-551 AT LEAST TWENTY-FOUR HOURS BEFORE STARTING ANY WORK UNDER THIS CONTRACT.
 - SPECIFICATIONS DATED MAY 25, 1962 APPLY IN THE CONSTRUCTION OF THIS PROJECT.
 - (a) NO CONSTRUCTION WILL BE PERMITTED IN FILL AREAS UNLESS ACCEPTABLE CERTIFICATION IS SUBMITTED TO THE CONSTRUCTION DIVISION OF THE COUNTY ENGINEER'S DEPARTMENT THAT RELATIVE COMPACTION IS GREATER THAN 90%.
 - (b) IF COMPACTION IS LESS THAN 90%, THE SEWER MUST BE CRADLED AS SHOWN IN THE PLANS PER S-166 & SPEC., SEC. 54.
 - (c) IF COMPACTION IS 90% OR GREATER, CRADLING IS NOT REQUIRED.
- 90% OR GREATER SPECIAL M.H. BASES ARE NOT REQUIRED IF COMPACTION IS 90% OR GREATER.
 IN ALL STATES LOCAL TRAFFIC SAFETY ORDERS WILL BE REGULARLY ENFORCED.

ENGINEERING SERVICE CORPORATION
 1127 W. WASHINGTON BLVD.
 LOS ANGELES 15, CALIF. RI. 9-7281

REVISIONS	TRACED BY				
	DES'G'D BY				
	CK'D BY				
	SUBMITTED				
SUB STRUCTURES OK'D					
W. O. NO.	DWG. NO.	DATE	SCALE	L. B.	P. B.
7397-16			As Noted		

NOTES
 GRADES TO WHICH THIS IMPROVEMENT IS TO BE CONSTRUCTED ARE SHOWN ON PLANS AND PROFILES. GRADE POINTS FOR TOP OF CURBS, CENTER LINE OF STREETS, OR CENTER LINE OF ALLEYS ARE SHOWN BY CIRCLES ON PROFILES. AT ALL POINTS BETWEEN DESIGNATED POINTS THE GRADE SHALL BE ESTABLISHED SO AS TO CONFORM TO A STRAIGHT LINE DRAWN BETWEEN SAID DESIGNATED POINTS.
 ELEVATIONS ARE IN FEET ABOVE U.S.C. & G.S. MEAN DATUM OF 1929.
 THIS DRAWING AND THE DATA HEREON ARE HEREBY MADE A PART OF THE SPECIFICATIONS.
 WORK SHALL BE CONSTRUCTED ACCORDING TO SPECIFICATIONS ON FILE IN THE OFFICE OF THE COUNTY ENGINEER AND SHALL BE INSPECTED ONLY IN THE PRESENCE OF THE COUNTY ENGINEER.
 BEFORE WORK CAN BE STARTED, THE CONTRACTOR MUST OBTAIN A PERMIT TO ENCASE ANY EXISTING STREETS FROM THE L.A. COUNTY ROAD DEPT., DISTRICT OFFICE NO. 3, AND PAY A FEE TO THE COUNTY ENGINEER, ROOM 310, COUNTY ENGINEER BLDG. 108 W. 5th ST., SUFFICIENT TO COVER THE COST OF CONSTRUCTION INSPECTION AND RECORD PLANS.
 APPROVAL OF THIS PLAN BY THE COUNTY OF LOS ANGELES DOES NOT CONSTITUTE A REPRESENTATION AS TO THE ACCURACY OF THE LOCATION OR OF THE EXISTENCE OR NON-EXISTENCE OF ANY UNDERGROUND UTILITY PIPE, OR STRUCTURE WITHIN THE LIMITS OF THIS PROJECT. THIS NOTE APPLIES TO ALL PAGES.
 IF WORK IS TO BE DONE IN A STATE HIGHWAY, A PERMIT MUST BE OBTAINED FROM THE STATE OF CALIFORNIA, DIVISION OF HIGHWAYS, 138 SOUTH SPRING STREET.

COUNTY OF LOS ANGELES, CALIFORNIA
 APPROVED, JOHN A. LAMBE, COUNTY ENGINEER, APPROVED, C.R. COMPTON, CHIEF ENGINEER
 CO. SEAL NO. 27
 BY *J. Compton* BY *J. Lambe*
 ASST. SANITATION ENGINEER OFFICE ENGINEER
 CHECKED BY *Joe Varda 8-16-61*
 OFFICE OF COUNTY ENGINEER, BPL. C. & N. 3446
 Submitted *Jack C. Lawrence*
 Palmdale - Ventura - Central Valley Regional Engineer



P.C. 5895 PAGE 2

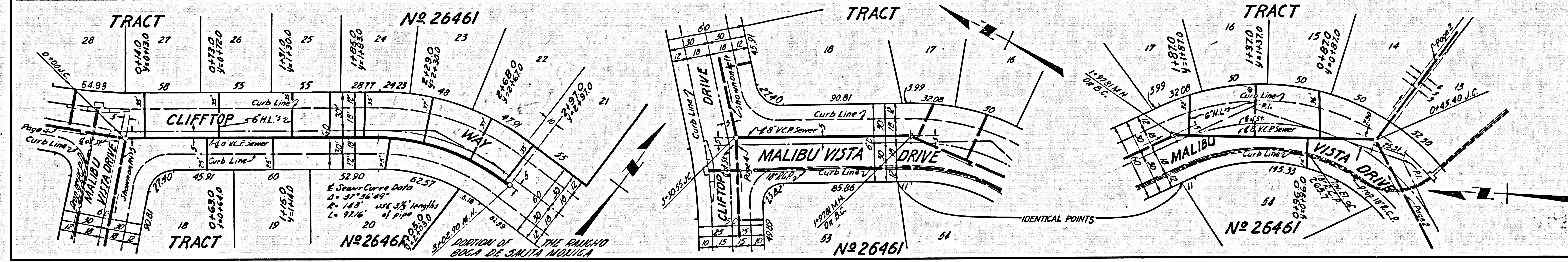
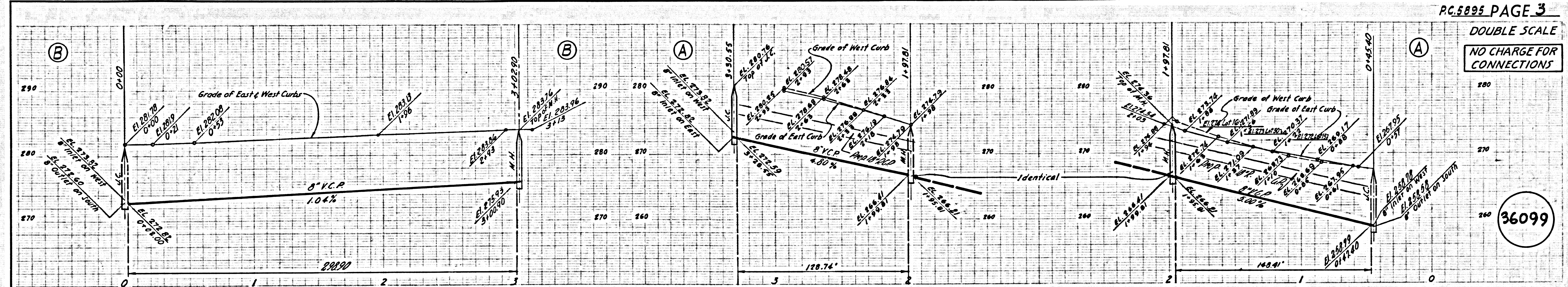
DOUBLE SCALE NO CHARGE FOR CONNECTIONS

36098

DOUBLE SCALE

NO CHARGE FOR CONNECTIONS

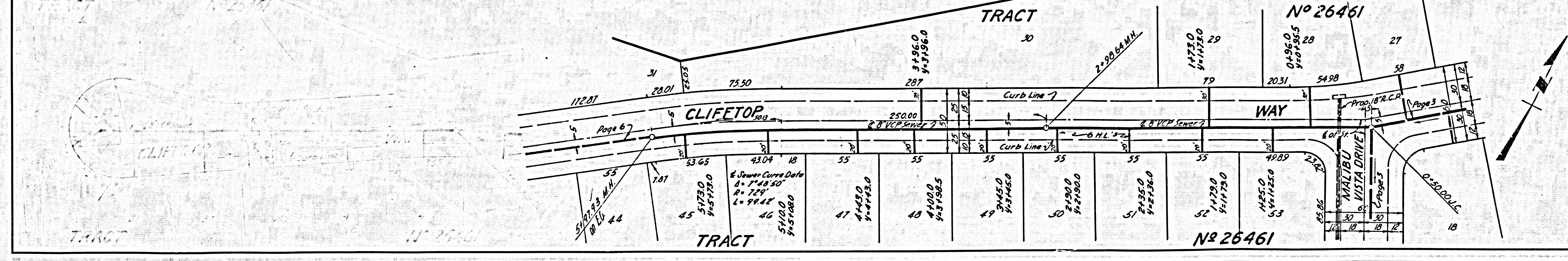
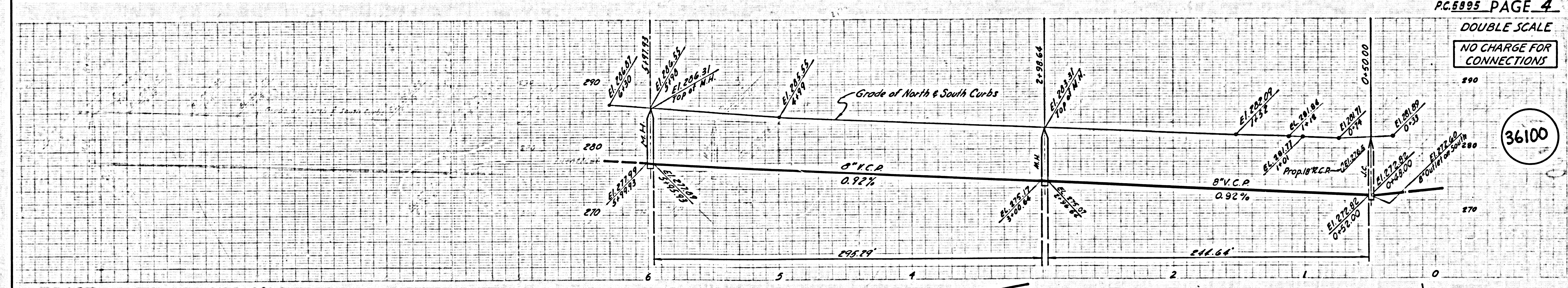
36099



DOUBLE SCALE

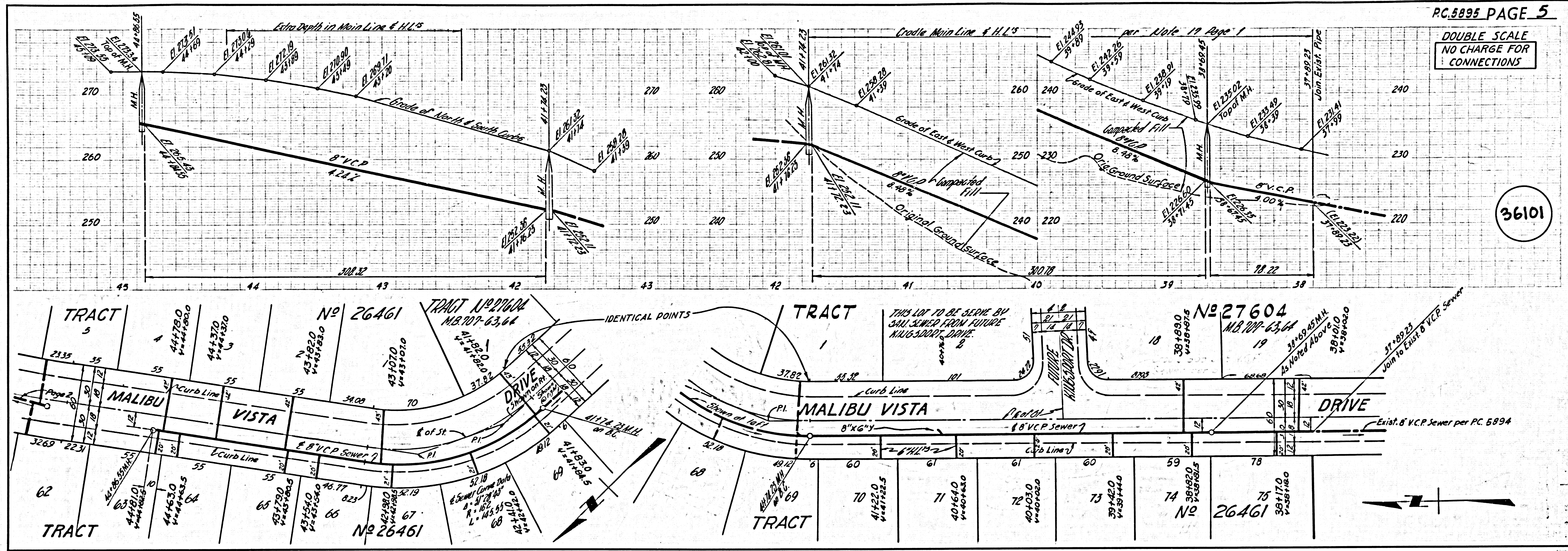
NO CHARGE FOR CONNECTIONS

36100



DOUBLE SCALE
NO CHARGE FOR
CONNECTIONS

36101



DOUBLE SCALE
NO CHARGE FOR
CONNECTION

36102

