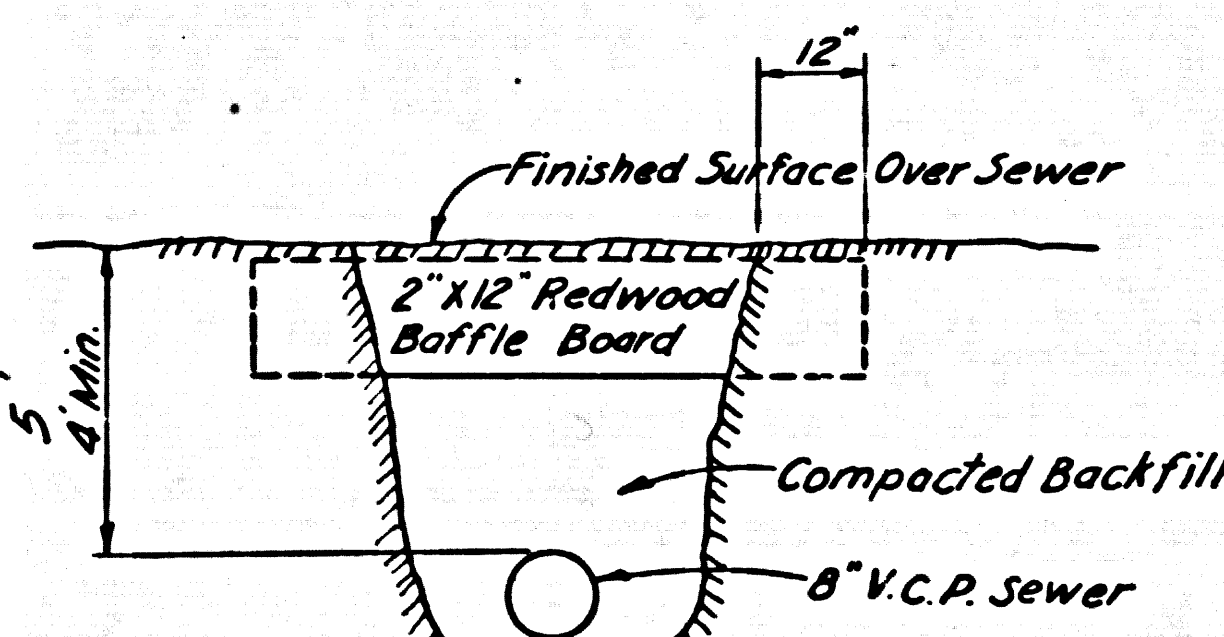


B.M. No 150001
 L.A. County Tract Mon. C-8A under cover
 105 ft. Sly. of South edge Asphalt Pavement
 Pacific Coast Highway 103.02 ft. W'ly from
 L & T. in South Curb West end Tapanga Canyon
 Bridge.
 El. 20.750 1955 Adj.

[Same as C.S.B.M. 48-63]

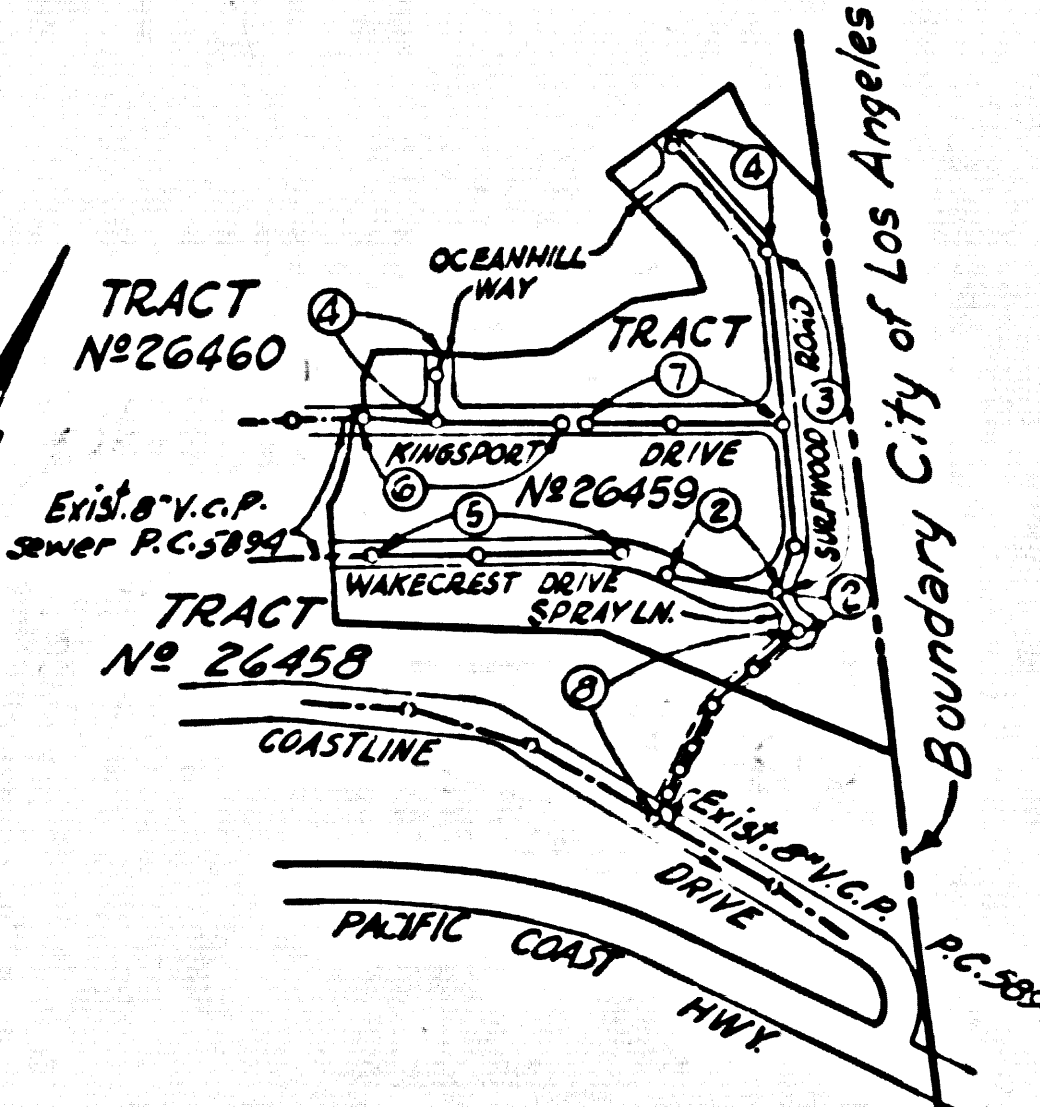


BAFFLE BOARD DETAIL
 NO SCALE

- NOTES
- Each end of Baffle Board will extend one foot into undisturbed ground.
 - The upper layer of backfill to be one foot minimum of Topsoil. Topsoil shall be tamped in place and planted with mustard and rye grass seed and adequately watered until growth is restored.
 - Baffle Boards shall be spaced so that the top of the lower board shall be level with the bottom of the next higher board.

PRIVATE ENGINEER'S
 NOTICE TO CONTRACTOR

THE EXISTENCE AND LOCATION OF ANY UNDERGROUND UTILITY PIPES OR STRUCTURES SHOWN ON THESE PLANS ARE OBTAINED BY A SEARCH OF THE AVAILABLE RECORDS. TO THE BEST OF OUR KNOWLEDGE THERE ARE NO EXISTING UTILITIES EXCEPT AS SHOWN ON THIS MAP. THE CONTRACTOR IS REQUIRED TO TAKE PRECAUTIONARY MEASURES TO PROTECT THE UTILITY LINES SHOWN AND ANY OTHER LINES NOT OF RECORD OR NOT SHOWN ON THIS DRAWING.



INDEX MAP
 TRACT No 26459
 SCALE: 1" = 600'
 P.C. 5896

NO CONNECTIONS FOR THE DISPOSAL OF INDUSTRIAL WASTES SHALL BE MADE TO SEWERS SHOWN ON THESE DRAWINGS WITHOUT WRITTEN PERMISSION FROM THE CHIEF ENGINEER AND GENERAL MANAGER OF THE COUNTY SANITATION DISTRICTS.

MALIBU BLDG. DIST. NO. 22

PROFILE ALIGNMENT AND GRADE OF
SANITARY SEWERS PAGE 1
 TO BE CONSTRUCTED IN J.N. 0356.02

TRACT No 26459

PRIVATE CONTRACT NO. 5896

W.S. 58
 4 SHEETS; 8 PAGES
 SCALE: VERT. 1" = 8'
 HORIZ. 1" = 40' MARCH, 1961
 PREPARED IN THE OFFICES OF
 ENGINEERING SERVICE CORPORATION

31765

FOR LEGEND SEE PLAN NO. S-A-64

- NOTES
- PROVIDE STAKES ON THE PROPERTY LINE OR PROPERTY LINES PRODUCED AT RIGHT ANGLES TO THE SEWER LINE AT THE CENTER LINE OF EACH MANHOLE.
 - NO REPRESENTATIVE OF THE COUNTY ENGINEER WILL SURVEY OR LAYOUT ANY PORTION OF THE WORK.
 - THE OWNER OR HIS AUTHORIZED REPRESENTATIVE SHALL FURNISH THE COUNTY ENGINEER WITH GRADE SHEETS AND STATION FOR ALL HOUSE LATERALS AND Y BRANCHES AND SHALL PROVIDE STAKES FOR THEM AT THEIR PROPER LOCATIONS WITH STATIONING PLAINLY MARKED. ANY CHANGE IN LOCATION SHALL BE REQUESTED IN WRITING BY THE OWNER OR HIS REPRESENTATIVE.
 - NO REVISIONS SHALL BE MADE IN THESE PLANS WITHOUT THE APPROVAL OF THE COUNTY ENGINEER.
 - USE STANDARD MANHOLE FRAMES AND COVERS, S.A. 117
 - USE STANDARD STRENGTH PIPE EXCEPT AS NOTED.
 - USE CEMENT MORTAR OR "WROOD LOCK" OR "SPEED SEAL" FOR ALL V.C.P. JOINTS PER SPEC. SEC. 364-48
 - RESURFACE ALL TERRACE WITHIN PAVED AREA TO MEET L. A. COUNTY ROAD DEPT., OR CALIF. STATE HIGHWAY DEPT. REQUIREMENTS IN ACCORDANCE WITH PERMITS.
 - ENCASE FOUR FEET OF SEWER AT POINTS OF INTERFERENCE WITH POLES, S-A-172 Case III
 - HOUSE LATERALS TO BE CONSTRUCTED WITH INVERTS AT PROPERTY LINE 6 FEET BELOW CURB GRADE
 - ALL STRUCTURES SHALL BE BRICK SEWER STRUCTURES, S-A-104, EXCEPT AS NOTED.
 - FOR ALLOWABLE LEAKAGE TEST USE FORMULA NO. 1 SPEC. S, SEC. 54
 - MANHOLE TOPS IN UNIMPROVED RIGHTS-OF-WAY TO BE 6" ABOVE FINISHED GRADE
 - THE PRIVATE ENGINEER IS TO FURNISH THE HOUSE LATERAL DEPTH AT THE PROPERTY LINE BELOW THE TOP OF CURVE ELEVATION FOR EACH HOUSE LATERAL ON THE GRADE SHEET.
 - THE CONTRACTOR SHALL NOTIFY THE CONSTRUCTION AND STORM DRAIN DIVISION BY TELEPHONE, MADISON 9-440, EXT. 21-551, AT LEAST 24 HOURS BEFORE STARTING ANY WORK UNDER THIS CONTRACT.
 - SPECIFICATIONS DATED OCT. 10, 1950 APPLY IN THE CONSTRUCTION OF THIS PROJECT
 - NO CONSTRUCTION WILL BE PERMITTED IN FIELD AREAS UNLESS ACCEPTABLE CERTIFICATION IS SUBMITTED TO THE CONSTRUCTION DIVISION OF THE COUNTY ENGINEERS DEPARTMENT THAT RELATIVE COMPACTION IS GREATER THAN 80%.
 - IF COMPACTION IS LESS THAN 80%, THE SEWER MUST BE CRADLED AS SHOWN ON PLAN PER S-A-166.
 - IF COMPACTION IS 80% OR GREATER, CRADLING IS NOT REQUIRED HOWEVER, JOINT COMPACTION MUST BE SUBSTITUTED FOR CEMENT MORTAR FOR ALL JOINTS IN FILLED AREAS. IF COMPACTION IS 90% OR GREATER, SPECIAL M.H. BOSTERS ARE NOT REQUIRED.

REVISION: Added J.C. of Sto.
 2+21.98 in EASEMENT on Page 8
 Edward J. Smith 5-19-62

REVISION: Raised Curbs & Sewers
 on Pages 3 & 4
 Edward J. Smith 7-17-62

NO CHARGE FOR CONNECTIONS
 L. G. ... 8-2-61

ENGINEERING SERVICE CORPORATION					
1127 W. WASHINGTON BLVD. LOS ANGELES 15, CALIF. RI. 9-7281					
REVISIONS			TRACED BY _____		
			DES'G'D BY _____		
			CK'D BY _____		
			SUBMITTED _____		
SUB STRUCTURES OK'D					
W. O. NO.	DWG. NO.	DATE	SCALE	L. B.	P. B.
7397-10			As Noted		

NOTE: GRADES TO WHICH THIS IMPROVEMENT IS TO BE CONSTRUCTED ARE SHOWN ON PLANS AND PROFILES. GRADE POINTS FOR TOP OF CURBS, CENTER LINE OF STREETS, OR CENTER LINE OF ALLEYS ARE SHOWN BY CIRCLES ON PROFILES. AT ALL POINTS BETWEEN DESIGNATED POINTS, THE GRADE SHALL BE ESTABLISHED SO AS TO CONFORM TO A STRAIGHT LINE DRAWN BETWEEN SAID DESIGNATED POINTS.

ELEVATIONS ARE IN FEET ABOVE U.S.C. & G.S. SEA LEVEL DATUM OF 1929

THIS DRAWING AND THE DATA HEREON ARE HEREBY MADE A PART OF THE SPECIFICATIONS. WORK SHALL BE CONSTRUCTED ACCORDING TO SPECIFICATIONS ON FILE IN THE OFFICE OF THE COUNTY ENGINEER AND SHALL BE PROSECUTED ONLY IN THE PRESENCE OF THE COUNTY ENGINEER.

BEFORE WORK CAN BE STARTED, THE CONTRACTOR MUST OBTAIN A PERMIT TO EXCAVATE IN COUNTY STREETS FROM THE L. A. COUNTY ROAD DEPT., DIST. OFFICE 13 AND PAY A FEE TO THE COUNTY ENGINEER, ROOM 310 100 W. 8th STREET SUFFICIENT TO COVER THE COST OF CONSTRUCTION INSPECTION AND RECORD PLANS.

APPROVAL OF THIS PLAN BY THE COUNTY OF LOS ANGELES DOES NOT CONSTITUTE A REPRESENTATION AS TO THE ACCURACY OF THE LOCATION OF OR THE EXISTENCE OR NON-EXISTENCE OF ANY UNDERGROUND UTILITY PIPE, OR STRUCTURE WITHIN THE LIMITS OF THIS PROJECT. THIS NOTE APPLIES TO ALL PAGES.

IF WORK IS TO BE DONE IN A STATE HIGHWAY, A PERMIT MUST BE OBTAINED FROM THE STATE OF CALIFORNIA, DIVISION OF HIGHWAYS, 120 SOUTH SPRING STREET.

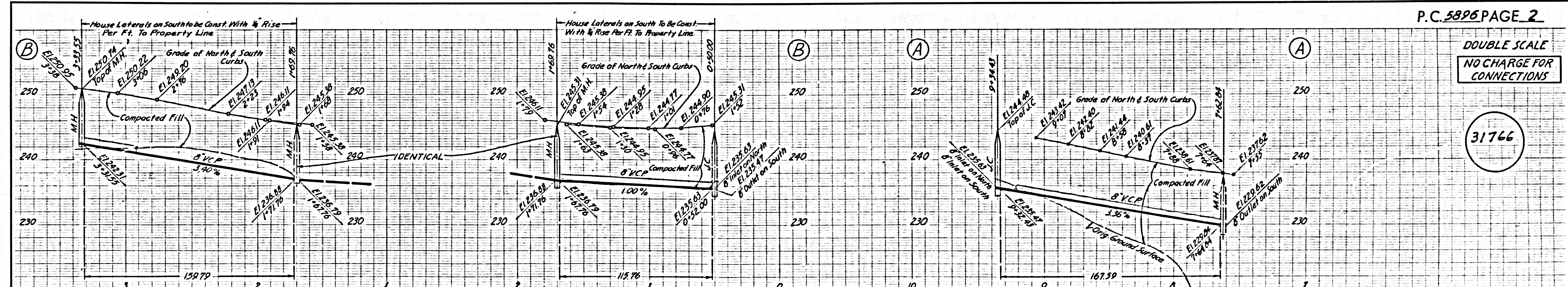
COUNTY OF LOS ANGELES, CALIFORNIA

APPROVED, JOHN A. LAMBIE, COUNTY ENGINEER APPROVED, C.R. COMPTON, CHIEF ENGINEER
 DIST. SAN. DIST. NO. 27

BY: C.E. ... ASST. SANITATION ENGINEER BY: J. ... OFFICE ENGINEER

CHECKED BY: ... 8-16-61
 OFFICE OF COUNTY ENGINEER, REG. C. E. NO. 2464

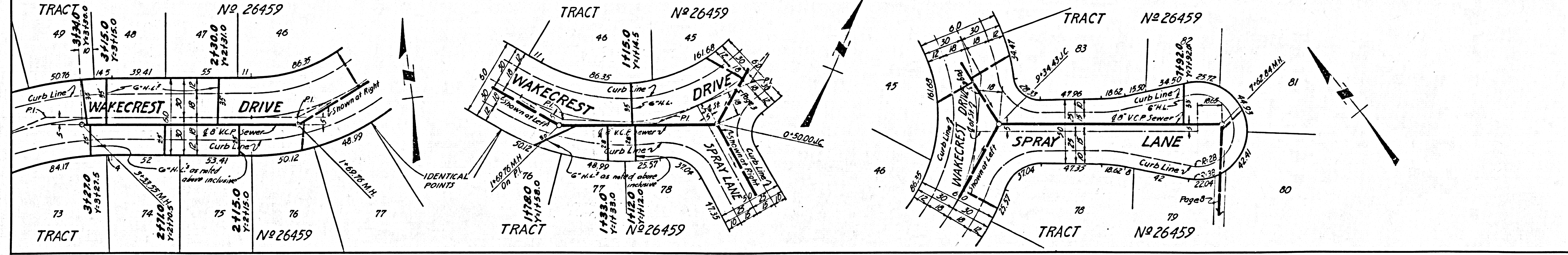
SUBMITTED ...
 Palms Verdes - Centennial Valley Regional Engineer



P.C. 5896 PAGE 2

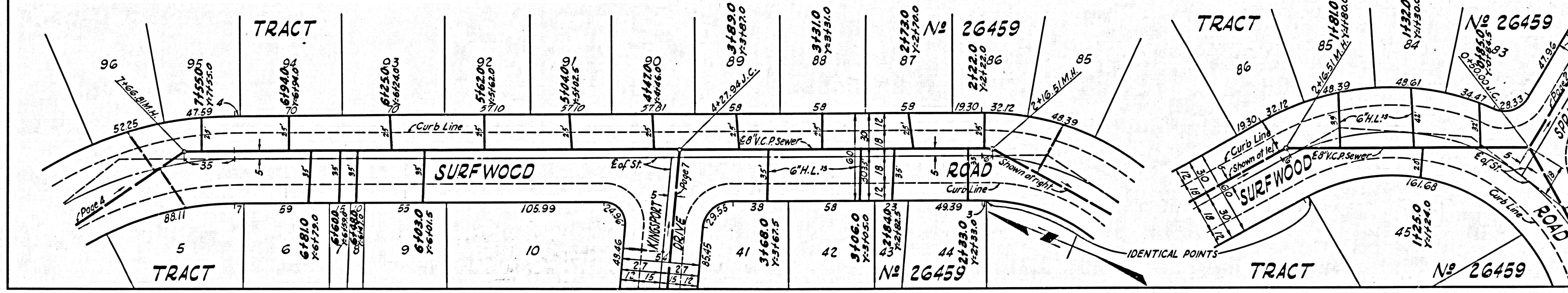
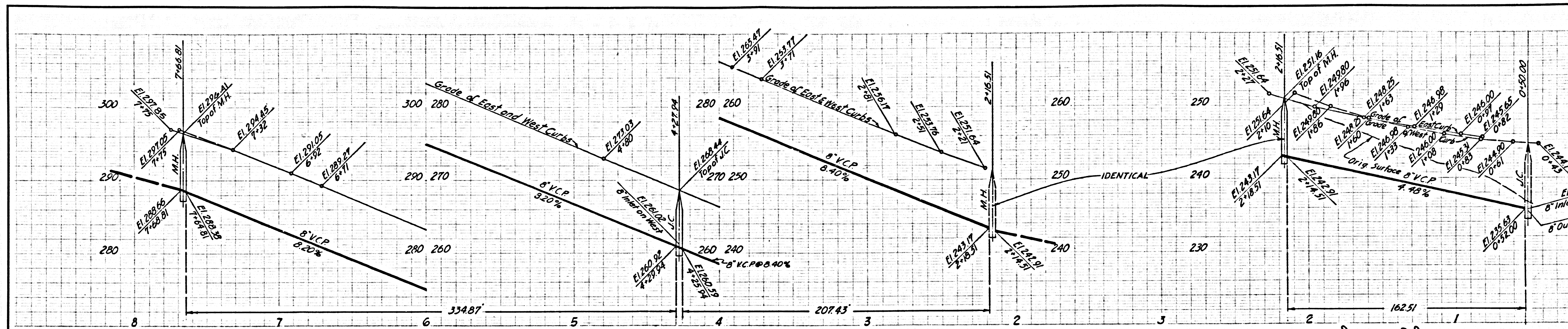
DOUBLE SCALE
 NO CHARGE FOR CONNECTIONS

31766



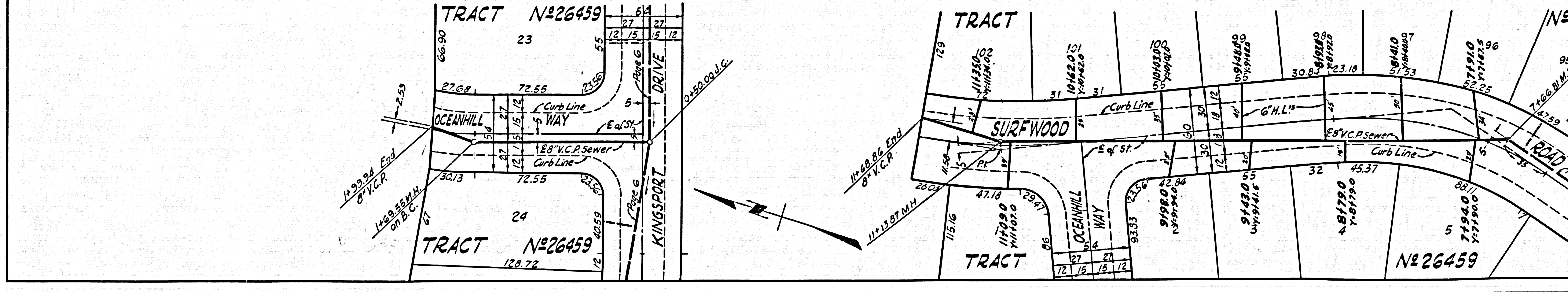
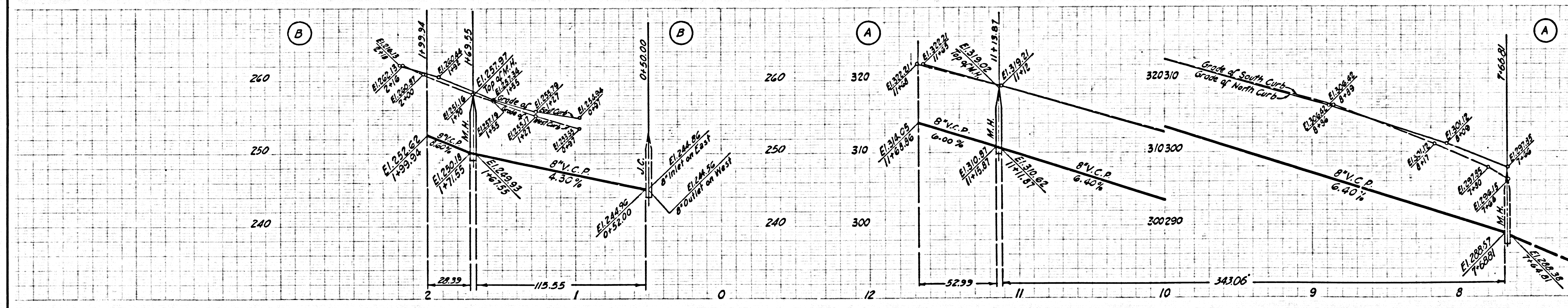
DOUBLE SCALE
NO CHARGE FOR
CONNECTIONS

31767

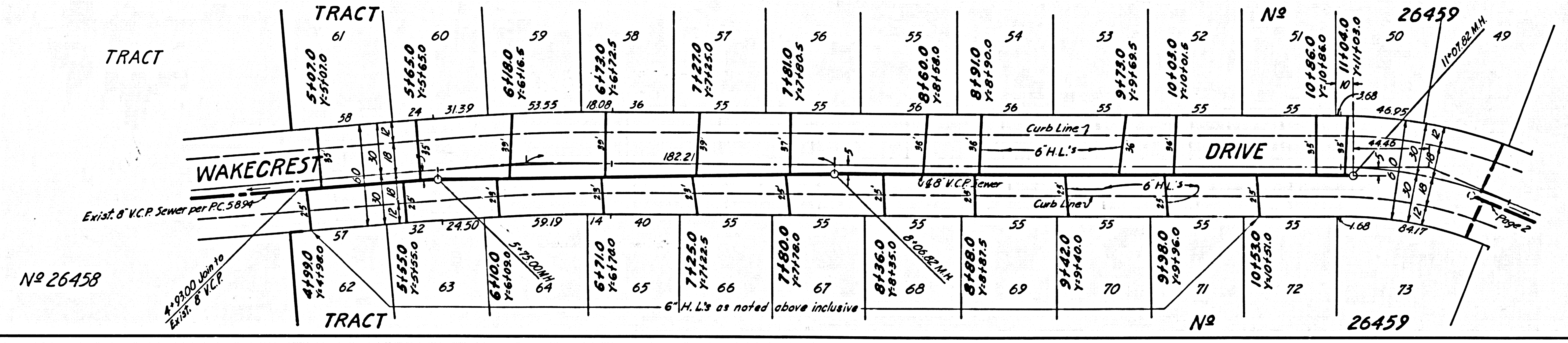
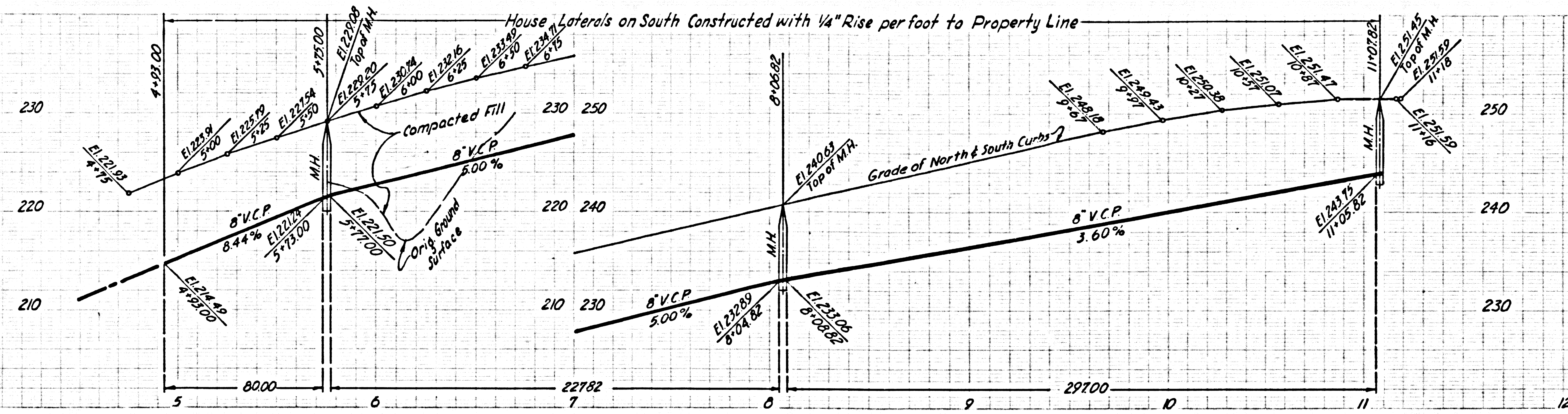


DOUBLE SCALE
NO CHARGE FOR
CONNECTIONS

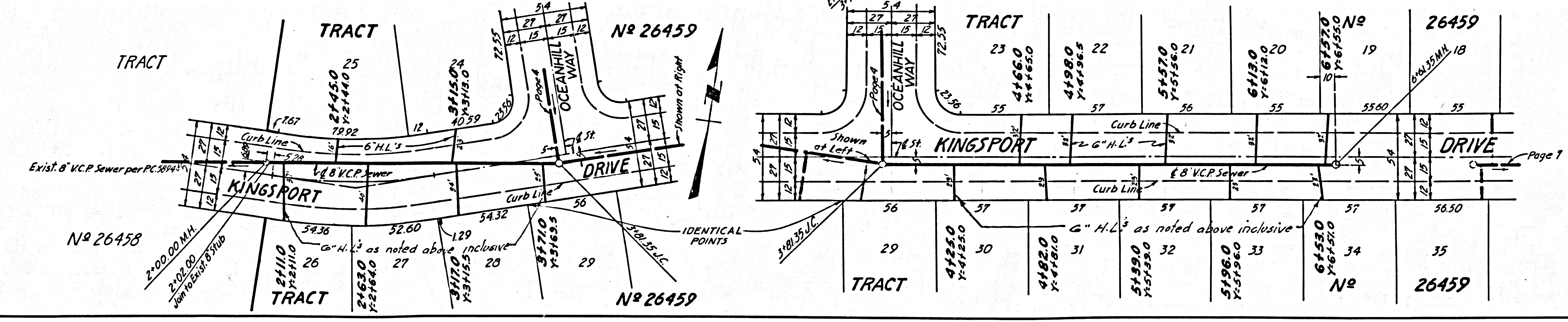
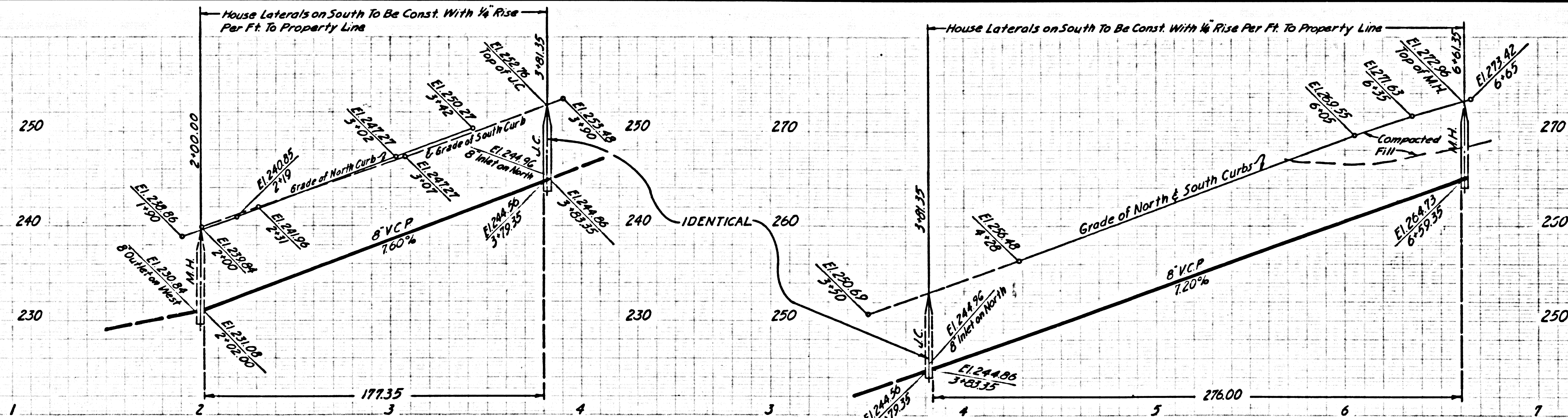
31768



31769



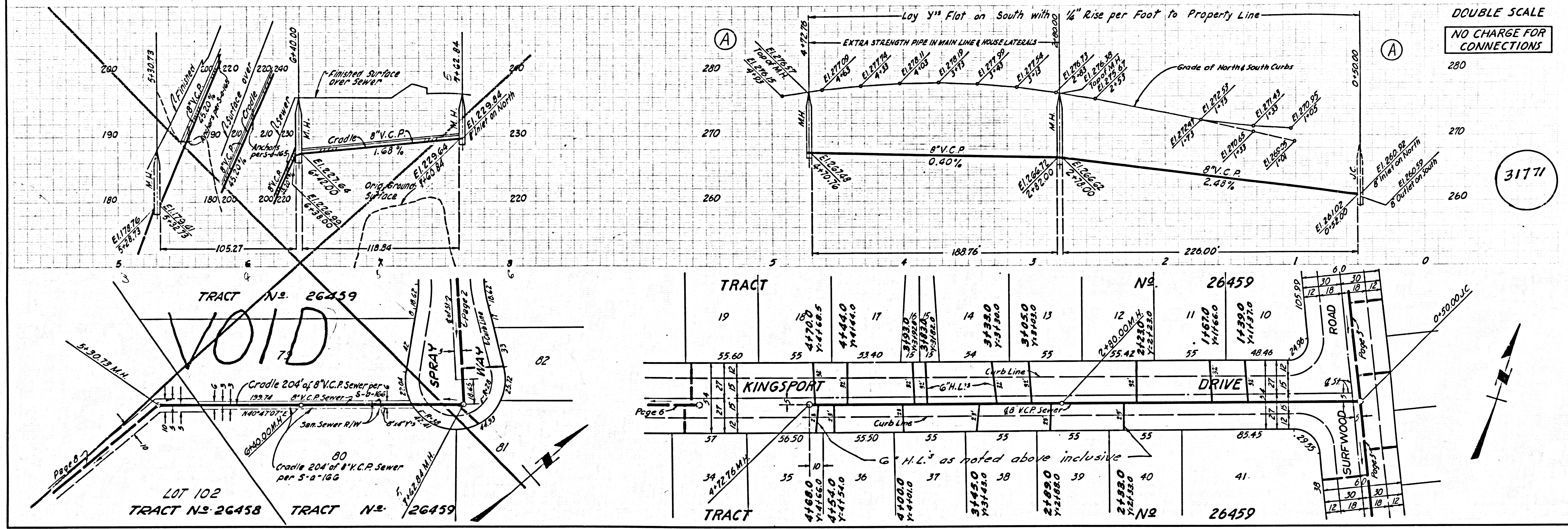
31770



DOUBLE SCALE

NO CHARGE FOR CONNECTIONS

3177



DOUBLE SCALE

NO CHARGE FOR CONNECTIONS

3172

