

**PUENTE BLDG. DIST. NO. 2**

PROFILE ALIGNMENT AND GRADE OF **P.C. 5897**

**SANITARY SEWERS PAGE 1**

TO BE CONSTRUCTED IN JN 8356.03

**TRACT No. 25500**

**PRIVATE CONTRACT NO. 5897**

W.S. 37

SHEET : 2 PAGES

SCALE: VERT. 1" = 4'  
HORIZ. 1" = 40'  
JUNE 1961  
PREPARED IN THE OFFICES OF  
**NATIONAL ENGINEERING CO.**

31406

By: *E. J. Appun*  
REG. C. E. NO. 5828

FOR LEGEND SEE PLAN NO. S-A-64

**REVISION:**  
Sheet 1, page 2, raising grade of sewer and curbs on Bycroft St. and elimination of sewer line on east side of Ninth Ave.  
Approved *R. M. Singletor*  
REG. C. E. NO. 11818 date 11/17/61

**PRIVATE ENGINEER'S NOTICE TO CONTRACTOR**

The existence and location of any underground utility pipes or structures shown on these plans were obtained by a search of the available records. To the best of our knowledge there are no existing utilities except as shown on this map. The Contractor is required to take due precautionary measures to protect the utility lines and any other lines not of record or not shown on this drawing.

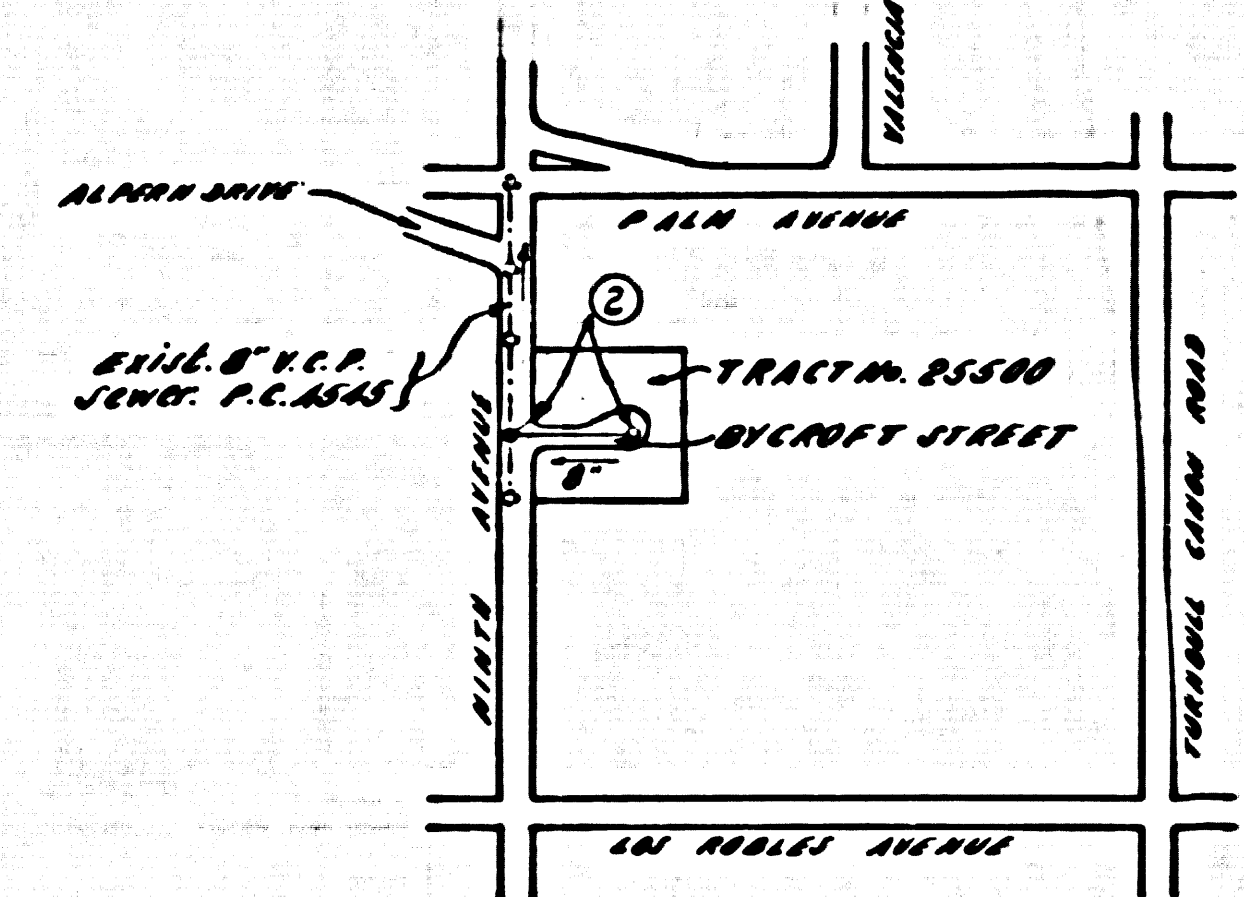
*R. M. Singletor*  
Registered Engineer's No. 5828

**BENCH MARK: SG 1342**  
417 N.E. Corner of east side of oak @ S.W. corner Oak Avenue and 9th Avenue  
Benchmark 1955 ELEV. 332.815

**NO CHARGE FOR CONNECTIONS**  
To 7th St. Drainage 9-21-61

- NOTES:**
1. PROVIDE STAKES ON THE PROPERTY LINE OR PROPERTY LINES PRODUCED AT RIGHT ANGLES TO THE SEWER LINE AT THE CENTER LINE OF EACH MANHOLE.
  2. NO REPRESENTATIVE OF THE COUNTY ENGINEER WILL SURVEY OR LAY OUT ANY PORTION OF THE WORK.
  3. THE OWNER OR HIS AUTHORIZED REPRESENTATIVE SHALL FURNISH THE COUNTY ENGINEER WITH GRADE SHEETS AND STATIONING FOR ALL HOUSE LATERALS AND Y BRANCHES AND SHALL PROVIDE STAKES FOR THEM AT THEIR PROPER LOCATIONS WITH STATIONING PLAINLY MARKED. ANY CHANGE IN LOCATION SHALL BE REQUESTED IN WRITING BY THE OWNER OR HIS REPRESENTATIVE.
  4. THE PRIVATE ENGINEER SHALL FURNISH THE HOUSE LATERAL DEPTH AT THE PROPERTY LINE BELOW THE TOP OF CURB ELEVATION FOR EACH HOUSE LATERAL ON THE GRADE SHEET.
  5. NO REVISIONS SHALL BE MADE IN THESE PLANS WITHOUT THE APPROVAL OF THE COUNTY ENGINEER.
  6. USE STANDARD MANHOLE FRAMES AND COVERS, S-117.
  7. USE EXTRA STRENGTH PIPE. ALL PIPE IS STANDARD DEPTH EXCEPT AS NOTED.
  8. USE CEMENT MORTAR OR "WEDGE-LOCK" OR "SPEED-SEAL" FOR ALL V.C.P. JOINTS PER SPECS. SECS. 36 & 40.
  9. RESURFACE ALL TRENCH WITHIN PAVED AREA TO MEET L.A. COUNTY ROAD DEPT. OR CALIF. STATE HIGHWAY REQUIREMENTS IN ACCORDANCE WITH PERMITS.
  10. ENCASE FOUR FEET OF SEWER AT POINTS OF INTERFERENCE WITH POLES, CASE III, S-172.
  11. HOUSE LATERALS TO BE CONSTRUCTED WITH INVERTS AT PROPERTY LINE 6 FEET BELOW CURB GRADE EXCEPT AS NOTED.
  12. ALL STRUCTURES SHALL BE BRICK SEWER STRUCTURES, S-104.
  13. FOR ALLOWABLE LEAKAGE TEST USE FORMULA NO. 1, SPECS. SEC. 54.
  14. MANHOLE TOPS IN UNIMPROVED RIGHTS-OF-WAY TO BE SIX INCHES ABOVE FINISHED GRADE.
  15. THE CONTRACTOR SHALL NOTIFY THE CONSTRUCTION DIVISION BY TELEPHONE, MADISON 5-4717, EXT. 8647 AT LEAST TWENTY-FOUR HOURS BEFORE STARTING ANY WORK UNDER THIS CONTRACT.
  16. Standard Spec. dated October 10, 1950 shall be used in the construction of this project.
  17. Ground water: where ground water is encountered use metal casings and pumps, or "wedge lock" or "speed seal" per Section 35, 36 and 40 of Standard Specifications.
  18. Figures in circles at ends of House Laterals indicate house laterals shall be constructed with 1/4" rise per foot to property line.
  19. Work on streets of grade of House Laterals and manholes shall be laid horizontal and house laterals shall be constructed with 1/4" rise per foot to property line.

NO CONNECTIONS FOR THE DISPOSAL OF INDUSTRIAL WASTES SHALL BE MADE TO SEWERS SHOWN ON THESE DRAWINGS WITHOUT WRITTEN PERMISSION FROM THE CHIEF ENGINEER AND GENERAL MANAGER OF THE COUNTY SANITATION DISTRICTS.



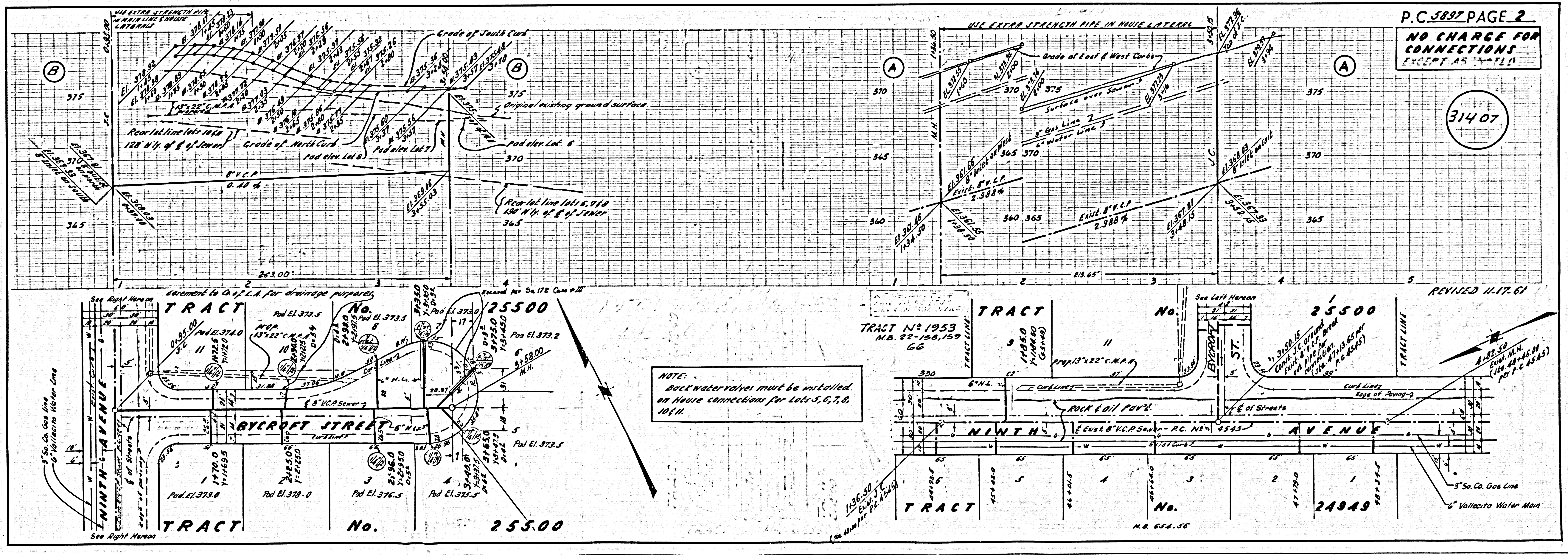
**INDEX MAP**  
**TRACT No. 25500**  
P.C. 5897

**NOTE:**  
GRADES TO WHICH THIS IMPROVEMENT IS TO BE CONSTRUCTED ARE SHOWN ON PLANS AND PROFILES. GRADE POINTS FOR TOP OF CURBS, CENTER LINE OF STREETS OR CENTER LINE OF ALLEYS ARE SHOWN BY CIRCLES ON PROFILES. AT ALL POINTS BETWEEN DESIGNATED POINTS THE GRADE SHALL BE ESTABLISHED SO AS TO CONFORM TO A STRAIGHT LINE DRAWN BETWEEN SAID DESIGNATED POINTS.  
ELEVATIONS ARE IN FEET ABOVE U.S.C. & G.S. SEA LEVEL DATUM OF 1929.  
THIS DRAWING AND THE DATA HEREON ARE HEREBY MADE A PART OF THE SPECIFICATIONS. WORK SHALL BE CONSTRUCTED ACCORDING TO SPECIFICATIONS ON FILE IN THE OFFICE OF THE COUNTY ENGINEER AND SHALL BE PROSECUTED ONLY IN THE PRESENCE OF THE COUNTY ENGINEER.  
BEFORE WORK CAN BE STARTED, THE CONTRACTOR MUST OBTAIN A PERMIT TO EXCAVATE IN COUNTY STREETS FROM THE L.A. COUNTY ROAD DEPT., DISTRICT OFFICE NO. 1, AND PAY A F.F.F. TO THE COUNTY ENGINEER, ROOM 3102, L.A. COUNTY ENGINEER BLDG., 100 N. 2ND ST. SUFFICIENT TO COVER THE COST OF CONSTRUCTION INSPECTION AND RECORD PLANS.  
APPROVAL OF THIS PLAN BY THE COUNTY OF LOS ANGELES DOES NOT CONSTITUTE A REPRESENTATION AS TO THE ACCURACY OF THE LOCATION OR THE EXISTENCE OR NON-EXISTENCE OF ANY UNDERGROUND UTILITY PIPE, OR STRUCTURE WITHIN THE LIMITS OF THIS PROJECT. THIS NOTE APPLIES TO ALL PAGES.  
IF WORK IS TO BE DONE IN A STATE HIGHWAY, A PERMIT MUST BE OBTAINED FROM THE STATE OF CALIFORNIA, DIVISION OF HIGHWAYS, 128 SOUTH SPRING STREET.

**COUNTY OF LOS ANGELES, CALIFORNIA**

APPROVED, JOHN A. LAMBE, COUNTY ENGINEER APPROVED, J.B. MANNHURST, CHIEF ENGINEER  
TO SAN. DIST. NO. 15  
BY: *C.E. Smith* 1557, SANITATION ENGINEER BY: *J.B. Mannhurst* OFFICE ENGINEER  
CHECKED BY: *S.K. White* 9-26-61  
OFFICE OF COUNTY ENGINEER, REG. C. E. NO. 3906

SUBMITTED *W.C. Reindler*  
SAN DIMAS REGIONAL ENGINEER



**NO CHARGE FOR CONNECTIONS**  
EXCEPT AS NOTED

31407

**NOTE:**  
Backwater valves must be installed on house connections for Lots 5, 6, 7, 8, 10 1/2.

REVISED 11-17-61