

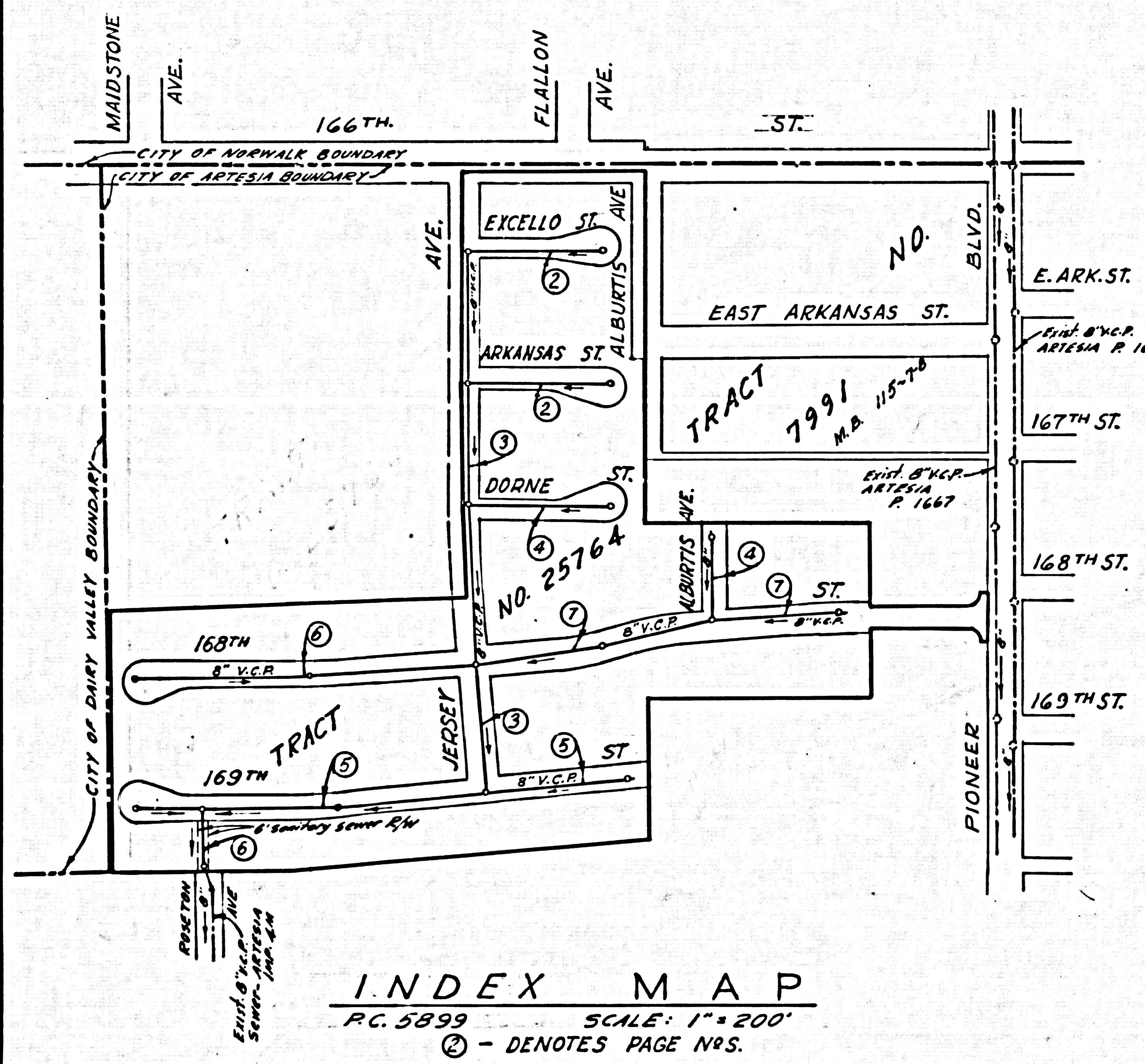
ARTESIA BLDG. DIST. NO. 4.09

PROFILE ALIGNMENT AND GRADE OF P.C. 5899
 SANITARY SEWERS PAGE 1
 TO BE CONSTRUCTED IN
 TRACT NO 25764

PRIVATE CONTRACT NO. 5899

W.S. 33
 4 SHEETS; 7 PAGES
 SCALE: VERT. 1"=4'
 HORIZ. 1"=40'
 MAY, 1961
 PREPARED IN THE OFFICES OF
 KEMMERER ENGR. CO. INC.
 BY: Robert R. Flores
 REG. C. E. NO. 11349
 FOR LEGEND SEE PLAN NO. S-A-64

31032



NOTE:
 THE EXISTENCE AND LOCATION OF ANY UNDERGROUND UTILITY PIPES OR STRUCTURES SHOWN ON THESE PLANS ARE OBTAINED BY A SEARCH OF THE AVAILABLE RECORDS TO THE BEST OF OUR KNOWLEDGE THERE ARE NO EXISTING UTILITIES EXCEPT AS SHOWN ON THESE DRAWINGS.
 THE CONTRACTOR IS REQUIRED TO TAKE THE PRECAUTIONARY MEASURES TO PROTECT THE UTILITY LINES SHOWN AND ANY OTHER LINES NOT OF RECORD OR NOT SHOWN ON THESE DRAWINGS.

REVISION
 RAISE INVERT ELEVATIONS 0.20' TO MEET EXISTING MANHOLE ELEVATION.
 Robert R. Flores 9-7-61
 OFFICE OF CITY ENGINEER REG. C.E. 3871

NO CHARGE FOR CONNECTIONS
 May 6-27-61

- NOTES:
1. PROVIDE STAKES ON THE PROPERTY LINE OR PROPERTY LINES PRODUCED AT RIGHT ANGLES TO THE SEWER LINE AT THE CENTER LINE OF EACH MANHOLE.
 2. NO REPRESENTATIVE OF THE CITY ENGINEER WILL SURVEY OR LAY OUT ANY PORTION OF THE WORK.
 3. THE OWNER OR HIS AUTHORIZED REPRESENTATIVE SHALL FURNISH THE CITY ENGINEER WITH GRADE SHEETS AND STATIONING FOR ALL HOUSE LATERALS AND Y BRANCHES AND SHALL PROVIDE STAKES FOR THEM AT THEIR PROPER LOCATIONS WITH STATIONING PLAINLY MARKED. ANY CHANGE IN LOCATION SHALL BE REQUESTED IN WRITING BY THE OWNER OR HIS REPRESENTATIVE.
 4. THE PRIVATE ENGINEER SHALL FURNISH THE HOUSE LATERAL DEPTH AT THE PROPERTY LINE BELOW THE TOP OF CURB ELEVATION FOR EACH HOUSE LATERAL ON THE GRADE SHEET.
 5. NO REVISIONS SHALL BE MADE IN THESE PLANS WITHOUT THE APPROVAL OF THE CITY ENGINEER.
 6. USE STANDARD MANHOLE FRAMES AND COVERS, S-111A.
 7. USE STANDARD STRENGTH PIPE EXCEPT AS NOTED.
 8. USE CEMENT MORTAR OR "WEDGE-LOCK" OR "SPREAD-SEAL" FOR ALL Y.C.P. JOINTS PER SPECS. SECS. 16 & 48.
 9. RESURFACE ALL TRENCH WITHIN PAVED AREA TO MEET L.A. COUNTY ROAD DEPT. OR CALIF. STATE HIGHWAY REQUIREMENTS IN ACCORDANCE WITH PERMITS.
 10. ENCASE FOUR FEET OF SEWER AT POINTS OF INTERFERENCE WITH POLES, CASE III, S-112.
 11. HOUSE LATERALS TO BE CONSTRUCTED WITH INVERTS AT PROPERTY LINE 6 FT. BELOW CURB GRADE EXCEPT AS NOTED.
 12. ALL STRUCTURES SHALL BE BRICK SEWER STRUCTURES, S-104.
 13. FOR ALLOWABLE LEAKAGE TEST USE FORMULA NO. 1, SPECS. SEC. 54.
 14. MANHOLE TOPS IN UNIMPROVED RIGHTS-OF-WAY TO BE SIX INCHES ABOVE FINISHED GRADE.
 15. THE CONTRACTOR SHALL NOTIFY THE CONSTRUCTION DIVISION BY TELEPHONE, MADISON 9-474, EXT. 8884 AT LEAST TWENTY-FOUR HOURS BEFORE STARTING ANY WORK UNDER THIS CONTRACT.
 16. STANDARD SPECIFICATIONS DATED OCTOBER 10, 1960, ON FILE IN THE CITY, SHALL APPLY IN THE CONSTRUCTION OF THIS PROJECT.

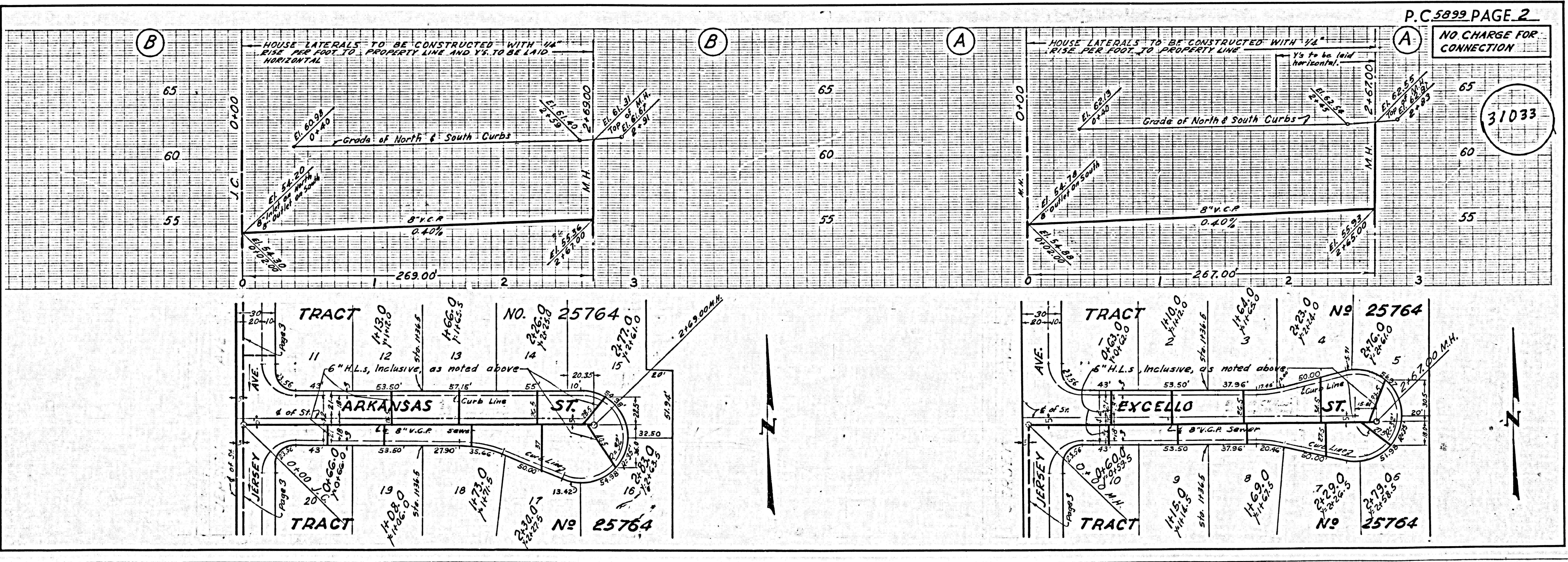
DO NOT ISSUE PERMITS UNTIL OUTLET IS BUILT

BENCH MARK
 S.Y. 3423 SET. L.F.B. N. 21' W. OF B.C.R.
 N.W. COR. PIONEER BLVD. & ARKANSAS ST.
 ELEV. 64.362 ARTESIA QUAD 1955

NO CONNECTIONS FOR THE DISPOSAL OF INDUSTRIAL WASTES SHALL BE MADE TO SEWERS SHOWN ON THESE DRAWINGS WITHOUT WRITTEN PERMISSION FROM THE CHIEF ENGINEER AND GENERAL MANAGER OF THE COUNTY SANITATION DISTRICTS.

NOTE:
 GRADES TO WHICH THIS IMPROVEMENT IS TO BE CONSTRUCTED ARE SHOWN ON PLANS AND PROFILES. GRADE POINTS FOR TOP OF CURBS, CENTER LINE OF STREETS OR CENTER LINE OF ALLEYS ARE SHOWN BY CIRCLES ON PROFILES. AT ALL POINTS BETWEEN DESIGNATED POINTS THE GRADE SHALL BE ESTABLISHED SO AS TO CONFORM TO A STRAIGHT LINE DRAWN BETWEEN SAID DESIGNATED POINTS.
 ELEVATIONS ARE IN FEET ABOVE U.S.C. & G.S. SEA LEVEL DATUM OF 1929.
 THIS DRAWING AND THE DATA HEREON ARE HEREBY MADE A PART OF THE SPECIFICATIONS.
 WORK SHALL BE CONSTRUCTED ACCORDING TO SPECIFICATIONS ON FILE IN THE OFFICE OF THE CITY ENGINEER AND SHALL BE PROSECUTED ONLY IN THE PRESENCE OF THE CITY ENGINEER.
 BEFORE WORK CAN BE STARTED, THE CONTRACTOR MUST OBTAIN A PERMIT TO EXCAVATE IN CITY STREETS FROM THE L.A. COUNTY ROAD DEPT., DISTRICT OFFICE NO. 4, AND MAKE A DEPOSIT WITH THE CITY OF ARTESIA, 1841 S. PIONEER BLVD., ARTESIA, CALIF. SUFFICIENT TO COVER THE COST OF CONSTRUCTION INSPECTION AND RECORD PLANS.
 APPROVAL OF THIS PLAN BY THE CITY OF ARTESIA DOES NOT CONSTITUTE A REPRESENTATION AS TO THE ACCURACY OF THE LOCATION OF OR THE EXISTENCE OR NON-EXISTENCE OF ANY UNDERGROUND UTILITY PIPE OR STRUCTURE WITHIN THE LIMITS OF THIS PROJECT. THIS NOTE APPLIES TO ALL PAGES.
 IF WORK IS TO BE DONE IN A STATE HIGHWAY, A PERMIT MUST BE OBTAINED FROM THE STATE OF CALIFORNIA, DIVISION OF HIGHWAYS, 120 SOUTH SPRING STREET.
 CITY OF ARTESIA, CALIFORNIA
 APPROVED, JOHN A. LAMBIE, CITY ENGINEER APPROVED, C. R. CAMPBELL, CHIEF ENGINEER
 BY: Robert R. Flores BY: [Signature] OFFICE ENGINEER
 CHECKED BY: [Signature] 6-29-61
 OFFICE OF CITY ENGINEER, REG. C. E. NO. 3466
 SUBMITTED BY: Robert R. Flores 6-26-61
 LOS CERRITOS REGIONAL ENGINEER C. E. 3871

INDEX MAP
 P.C. 5899 SCALE: 1"=200'
 ② - DENOTES PAGE NOS.

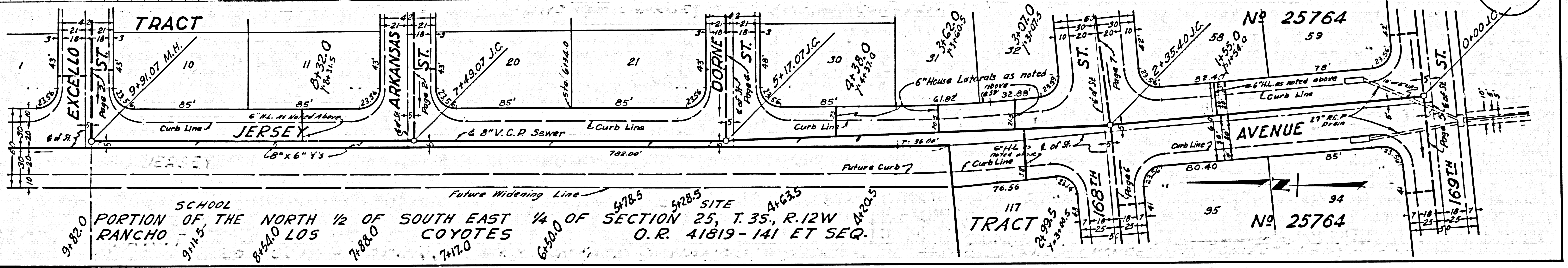
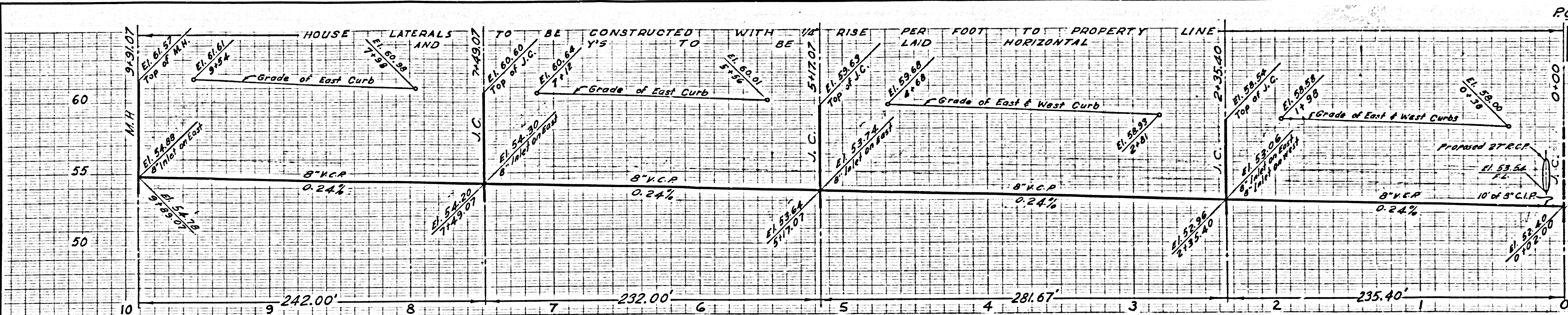


NO CHARGE FOR CONNECTION

31033

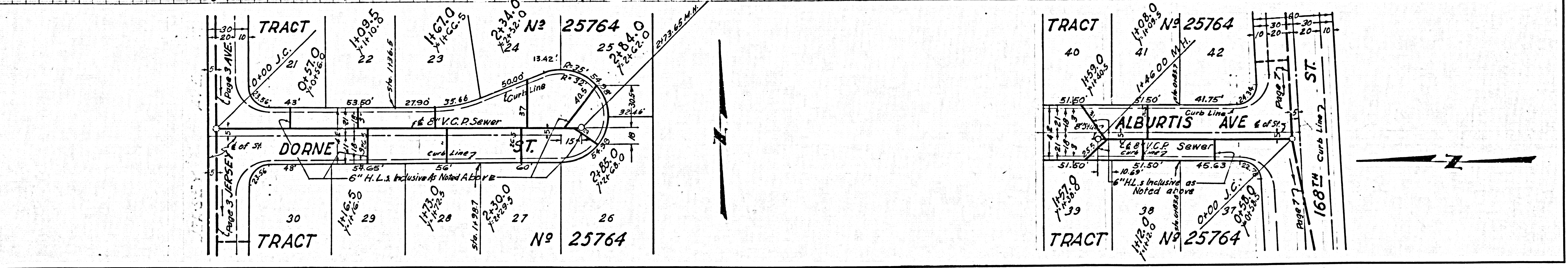
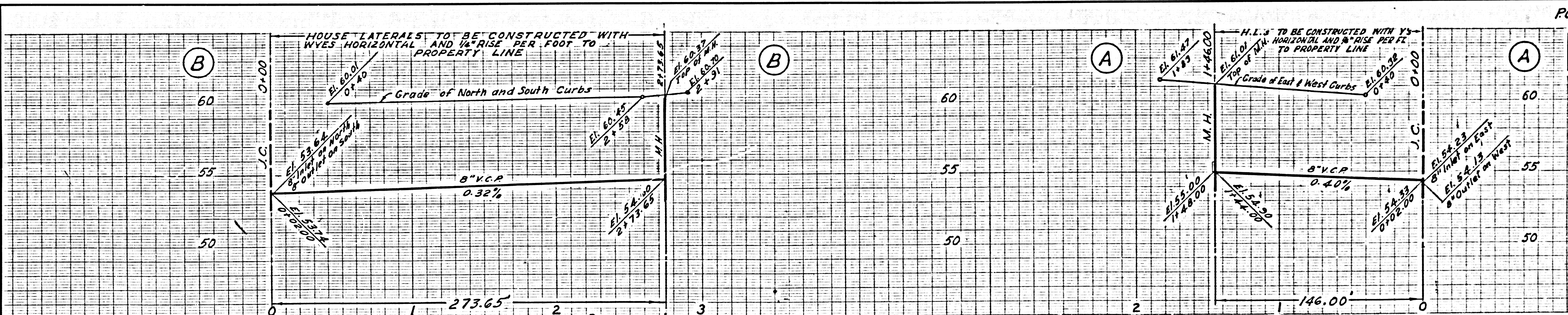
TRACT NO. 25764
 6" H.L.s. inclusive, as noted above
 8" V.C.P. sewer
 M.H.
 JERSEY AVE.
 EXCELLO ST.
 ARKANSAS ST.

NO CHARGE FOR CONNECTIONS



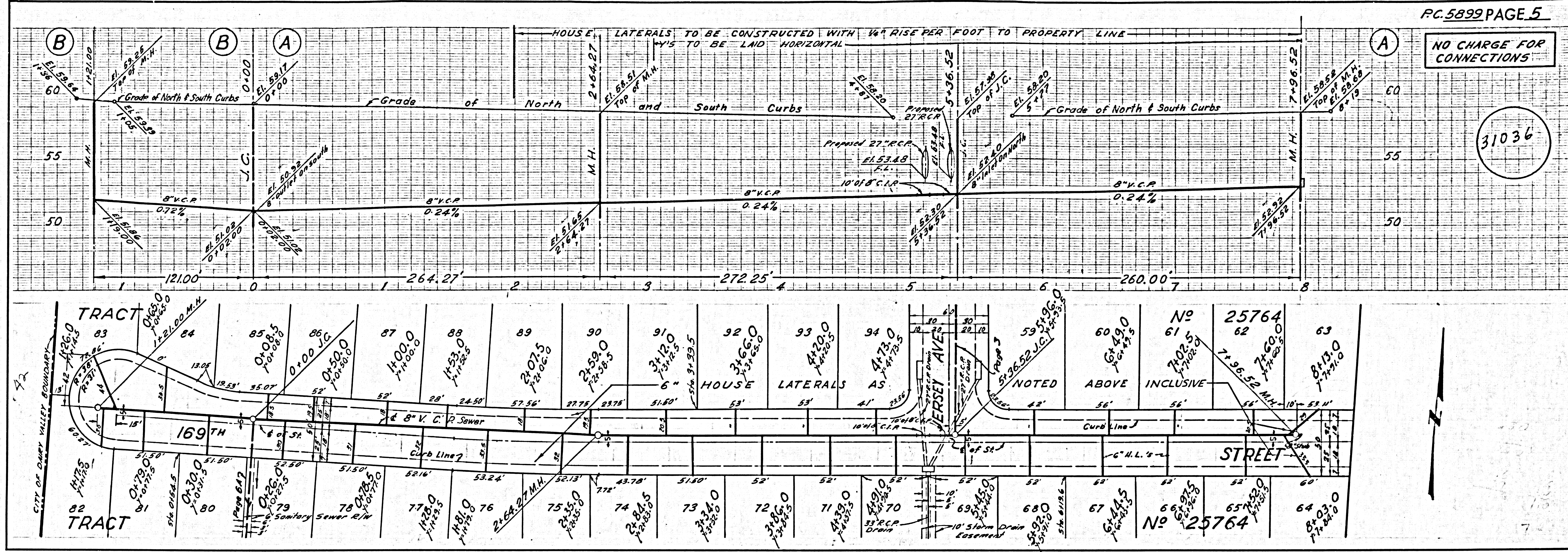
PORTION OF THE NORTH 1/2 OF SCHOOL RANCHO
 SOUTH EAST 1/4 OF SECTION 25, T. 35, R. 12W
 LOS COYOTES O.R. 41819-141 ET SEQ.

NO CHARGE FOR CONNECTION



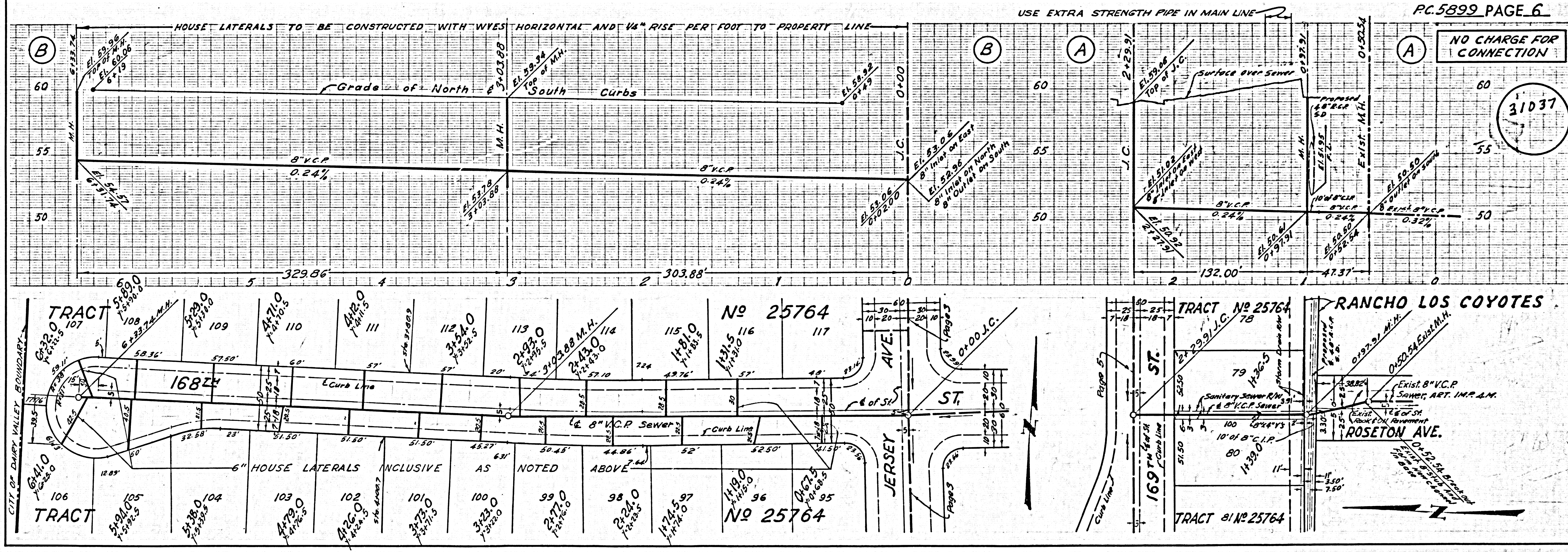
NO CHARGE FOR CONNECTIONS

31036



NO CHARGE FOR CONNECTION

31037



NO CHARGE FOR CONNECTION

31038

