

TRACT No 26535
 PRIVATE CONTRACT NO. 5905

W.S. 28
 1 SHEET ; 2 PAGES
 SCALE: VERT. 1"=4'
 HORIZ. 1"=40'
 APRIL, 1961.
 PREPARED IN THE OFFICES OF
 BARCLAY - PEARSON CO., INC.
 BY: Edward J. Pearson
 REG. C. E. NO. 2723

31664

FOR LEGEND SEE PLAN NO. S-A-64

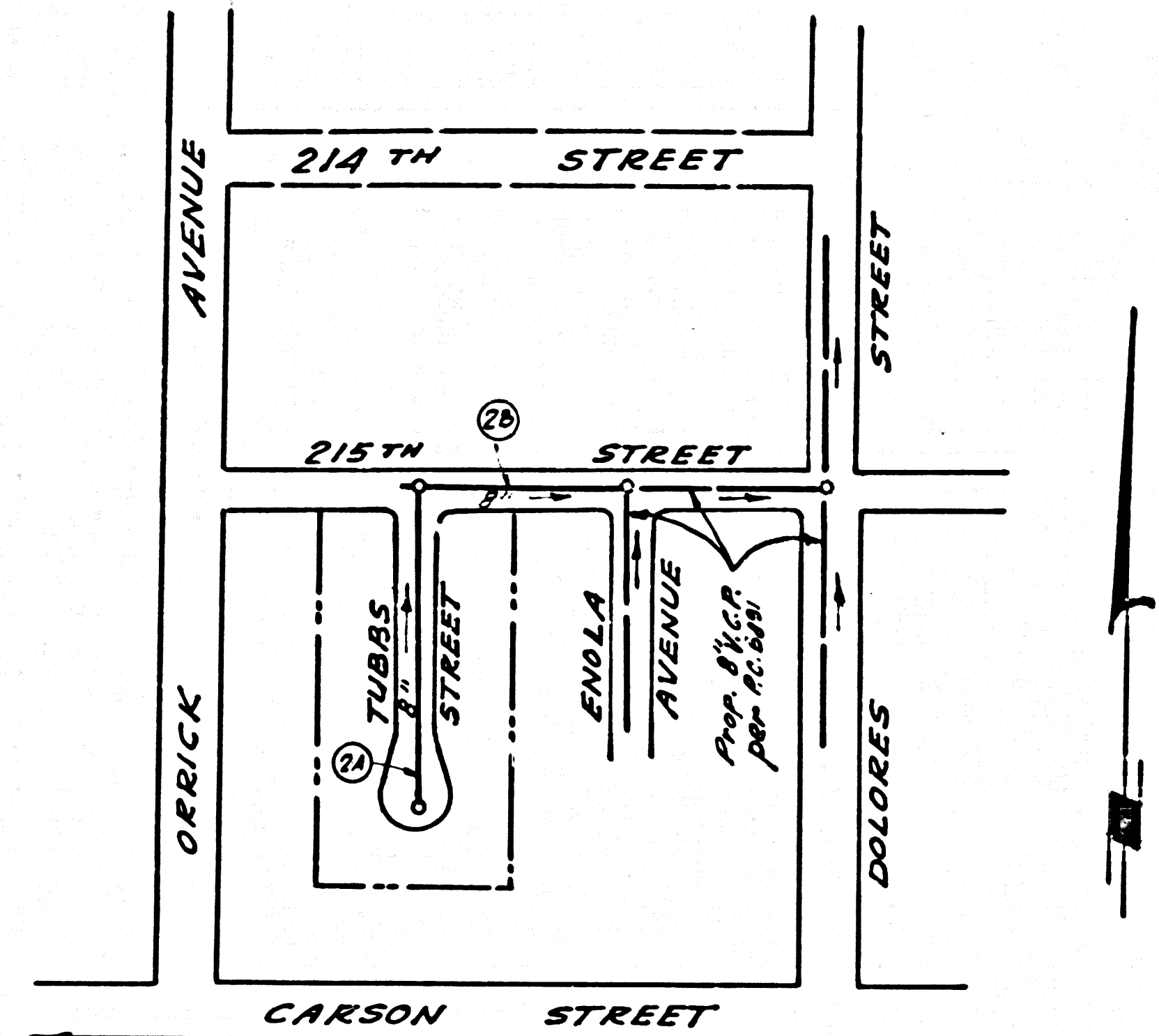
NOTE:
 GRADES TO WHICH THIS IMPROVEMENT IS TO BE CONSTRUCTED ARE SHOWN ON PLANS AND PROFILES. GRADE POINTS FOR TOP OF CURBS, CENTER LINE OF STREETS, OR CENTER LINE OF ALLEYS ARE SHOWN BY CIRCLES ON PROFILES. AT ALL POINTS BETWEEN DESIGNATED POINTS THE GRADE SHALL BE ESTABLISHED SO AS TO CONFORM TO A STRAIGHT LINE DRAWN BETWEEN SAID DESIGNATED POINTS.
 ELEVATIONS ARE IN FEET ABOVE U.S.C. & G.S. SEA LEVEL DATUM OF 1929.
 THIS DRAWING AND THE DATA HEREON ARE HEREBY MADE A PART OF THE SPECIFICATIONS.
 WORK SHALL BE CONSTRUCTED ACCORDING TO SPECIFICATIONS ON FILE IN THE OFFICE OF THE COUNTY ENGINEER AND SHALL BE PROSECUTED ONLY IN THE PRESENCE OF THE COUNTY ENGINEER.
 BEFORE WORK CAN BE STARTED, THE CONTRACTOR MUST OBTAIN A PERMIT TO EXCAVATE IN COUNTY STREETS FROM THE L.A. COUNTY ROAD DEPT., DISTRICT OFFICE NO. 3, AND PAY A FEE TO THE COUNTY ENGINEER, ROOM 310 COUNTY ENG. BLDG., 100 W. SECOND ST., SUFFICIENT TO COVER THE COST OF CONSTRUCTION INSPECTION AND RECORD PLANS.
 APPROVAL OF THIS PLAN BY THE COUNTY OF LOS ANGELES DOES NOT CONSTITUTE A REPRESENTATION AS TO THE ACCURACY OF THE LOCATION OF OR THE EXISTENCE OR NON-EXISTENCE OF ANY UNDERGROUND UTILITY PIPE, OR STRUCTURE WITHIN THE LIMITS OF THIS PROJECT. THIS NOTE APPLIES TO ALL PAGES.
 IF WORK IS TO BE DONE IN A STATE HIGHWAY, A PERMIT MUST BE OBTAINED FROM THE STATE OF CALIFORNIA, DIVISION OF HIGHWAYS, 120 SOUTH SPRING STREET.

COUNTY OF LOS ANGELES, CALIFORNIA
 APPROVED, JOHN A. LAMBIE, COUNTY ENGINEER
 APPROVED, C. E. SMITH, CHIEF ENGINEER
 CD. SAN. DIST. NO. 8
 BY: [Signature] ASST. SANITATION ENGINEER
 BY: [Signature] OFFICE ENGINEER
 CHECKED BY: [Signature] 8-22-61
 OFFICE OF COUNTY ENGINEER, REG. C. E. NO. 3404

SUBMITTED BY: [Signature]
 Palms Verdes - Antelope Valley Regional Engineer

- NOTES:
1. PROVIDE STAKES ON THE PROPERTY LINE OR PROPERTY LINES PRODUCED AT RIGHT ANGLES TO THE SEWER LINE AT THE CENTER LINE OF EACH MANHOLE.
 2. NO REPRESENTATIVE OF THE COUNTY ENGINEER WILL SURVEY OR LAY OUT ANY PORTION OF THE WORK.
 3. THE OWNER OR HIS AUTHORIZED REPRESENTATIVE SHALL FURNISH THE COUNTY ENGINEER WITH GRADE SHEETS AND STATIONING FOR ALL HOUSE LATERALS AND Y BRANCHES AND SHALL PROVIDE STAKES FOR THEM AT THEIR PROPER LOCATIONS WITH STATIONING PLAINLY MARKED. ANY CHANGE IN LOCATION SHALL BE REQUESTED IN WRITING BY THE OWNER OR HIS REPRESENTATIVE.
 4. THE PRIVATE ENGINEER SHALL FURNISH THE HOUSE LATERAL DEPTH AT THE PROPERTY LINE BELOW THE TOP OF CURB ELEVATION FOR EACH HOUSE LATERAL ON THE GRADE SHEET.
 5. NO REVISIONS SHALL BE MADE IN THESE PLANS WITHOUT THE APPROVAL OF THE COUNTY ENGINEER.
 6. USE STANDARD MANHOLE FRAMES AND COVERS, 2-117.
 7. USE STANDARD STRENGTH PIPE.
 8. USE CEMENT MORTAR OR "WEDGE-LOCK" OR "SPEED-SEAL" FOR ALL V.C.P. JOINTS PER SPEC., SECS. 34 & 48.
 9. RESURFACE ALL TRINCH WITHIN PAVED AREA TO MEET L.A. COUNTY ROAD DEPT. OR CALIF. STATE HIGHWAY REQUIREMENTS IN ACCORDANCE WITH PERMITS.
 10. ENCASE FOUR FEET OF SEWER AT POINTS OF INTERFERENCE WITH POLES, CASE III, 2-172.
 11. HOUSE LATERALS TO BE CONSTRUCTED WITH INVERTS AT PROPERTY LINE 6 FEET BELOW CURB GRADE.
 12. ALL STRUCTURES SHALL BE BRICK SEWER STRUCTURES, 2-114.
 13. FOR ALLOWABLE LEAKAGE TEST USE FORMULA NO. 1, SPEC., SEC. 54.
 14. MANHOLE TOPS IN UNIMPROVED RIGHTS-OF-WAY TO BE SIX INCHES ABOVE FINISHED GRADE.
 15. THE CONTRACTOR SHALL NOTIFY THE CONSTRUCTION DIVISION BY TELEPHONE, MADISON 3-417, EXT. 8151 AT LEAST TWENTY-FOUR HOURS BEFORE STARTING ANY WORK UNDER THIS CONTRACT.
 16. Standard specifications dated October 10, 1960 apply in the construction of this project.
 17. The existence and location of any underground utility pipes, or structures shown on these plans are obtained by a search of the available records. To the best of our knowledge there are no existing utilities except as shown on this map. The contractor is required to take due precautionary measures to protect the utility lines shown and any other lines not of record or not shown on this drawing.

NO CONNECTIONS FOR THE DISPOSAL OF INDUSTRIAL WASTES SHALL BE MADE TO SEWERS SHOWN ON THESE DRAWINGS WITHOUT WRITTEN PERMISSION FROM THE CHIEF ENGINEER AND GENERAL MANAGER OF THE COUNTY SANITATION DISTRICTS.

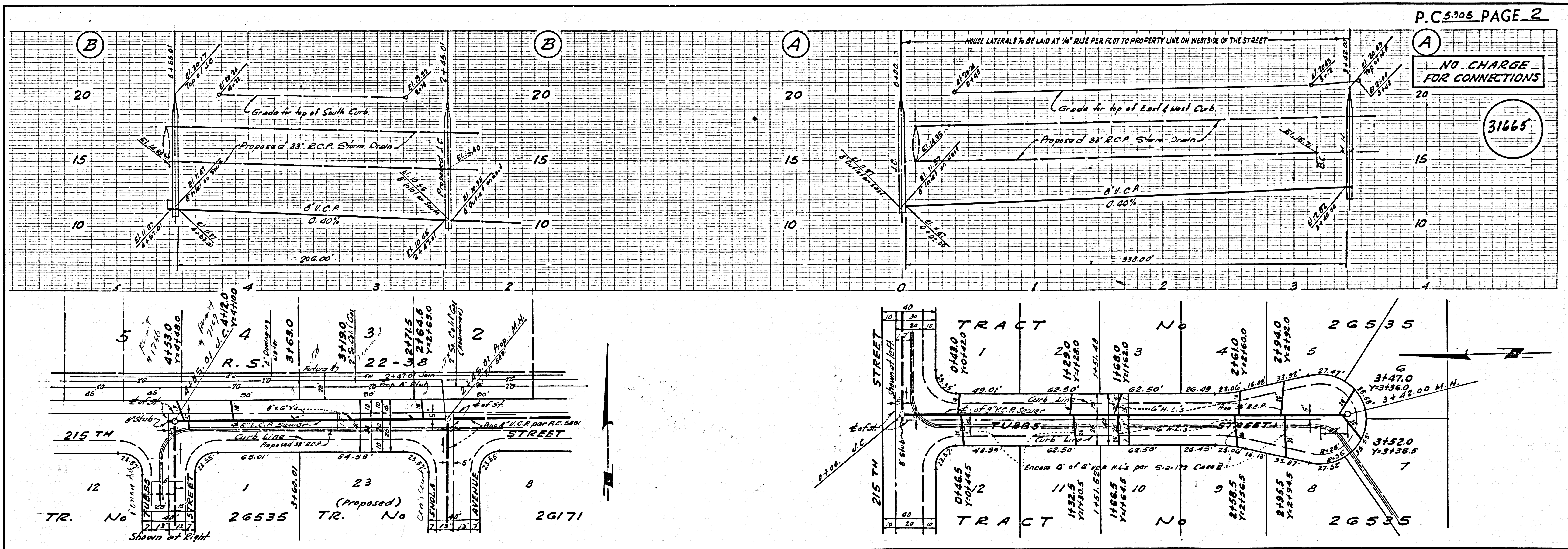


INDEX MAP
 TRACT No 26535
 R.C. 5905
 Scale 1"=200'

BENCH MARK
 87.500
 21.20.004
 E. Eye ball Corner cone valve box 2'05" E.
 & Carson St. & 168 W. of Dolores Street & 44
 Corner valve box on Conroy's 168 W. of
 Line. Gardena Curb 1955

NO CHARGE FOR CONNECTIONS
 [Signature]

ISSUE NO PERMITS UNTIL R.C. 5891 IS CONSTRUCTED.



NO CHARGE FOR CONNECTIONS

31665