

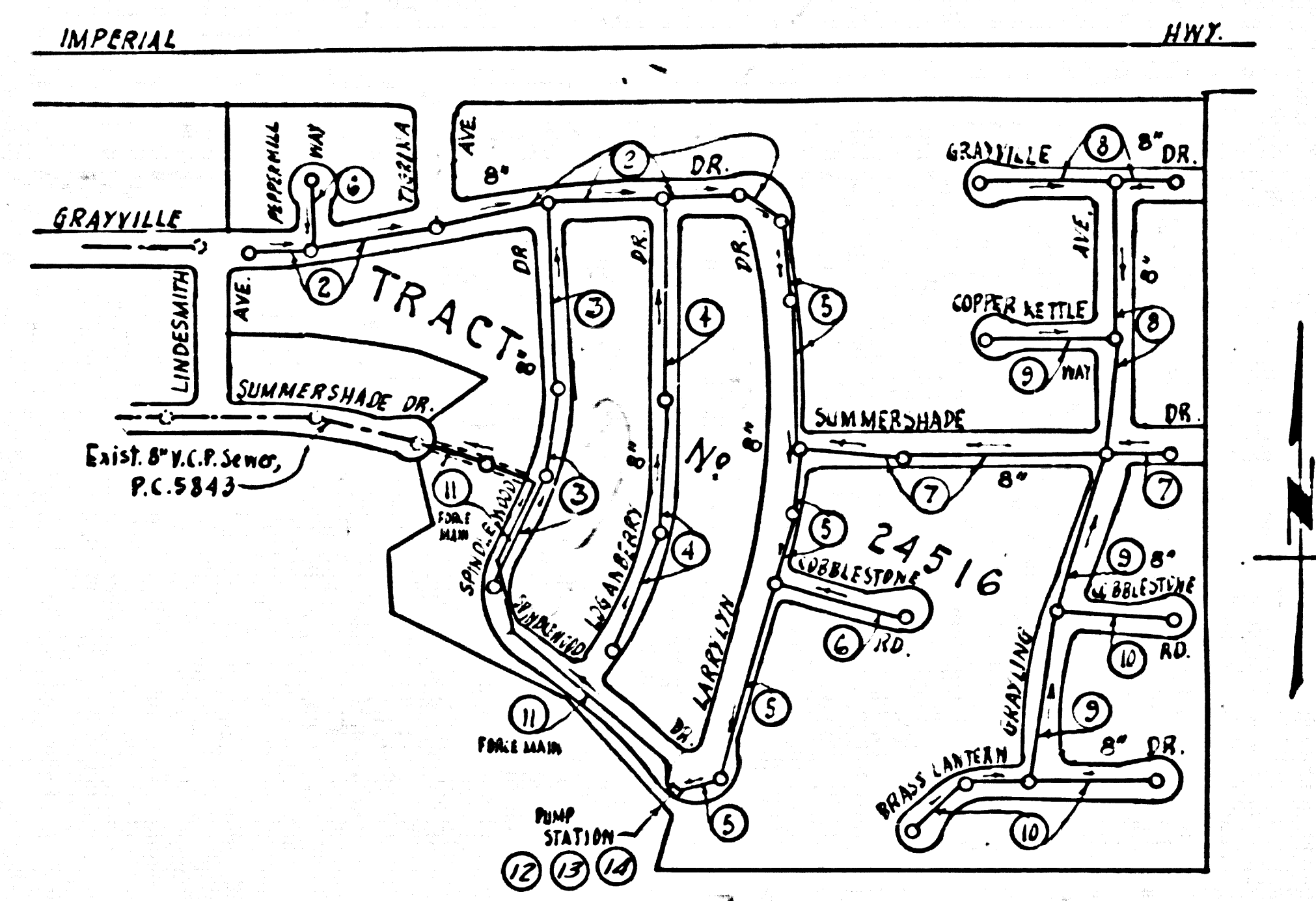
BENCH MARK:
 S.Y. 3997 - L.A. Co. Surveyor's Mon., 15' S. of & IMPERIAL HIGHWAY
 8' W. of & FIRST STREET Prod. 2.0' Deep in Cast Iron Well
 Elev. 298.237 (La Mirada Quad. - 1955)

DOUBLE SCALE
 NORWALK BLDG. DIST. NO.4.2

PROFILE ALIGNMENT AND GRADE OF P.C. 5906
 SANITARY SEWERS PAGE 1
 AND PUMPING STATION J.N. 0356.08
 FOR TRACT N° 24516
 PRIVATE CONTRACT NO. 5906

W.S. 34
 9 SHEETS, 14 PAGES
 SCALE: VERT. 1" = 4'
 HORIZ. 1" = 40'
 JUNE, 1961
 PREPARED IN THE OFFICES OF
 BARNETT, SMITH, & SALIT
 By: Harold G. Barnett
 REG. C. E. NO. 1212
 FOR LEGEND SEE PLAN NO. S-A-64

31546



INDEX MAP
 TRACT N° 24516
 P.C. 5906 J.N. 0356.08
 SCALE: 1" = 300'

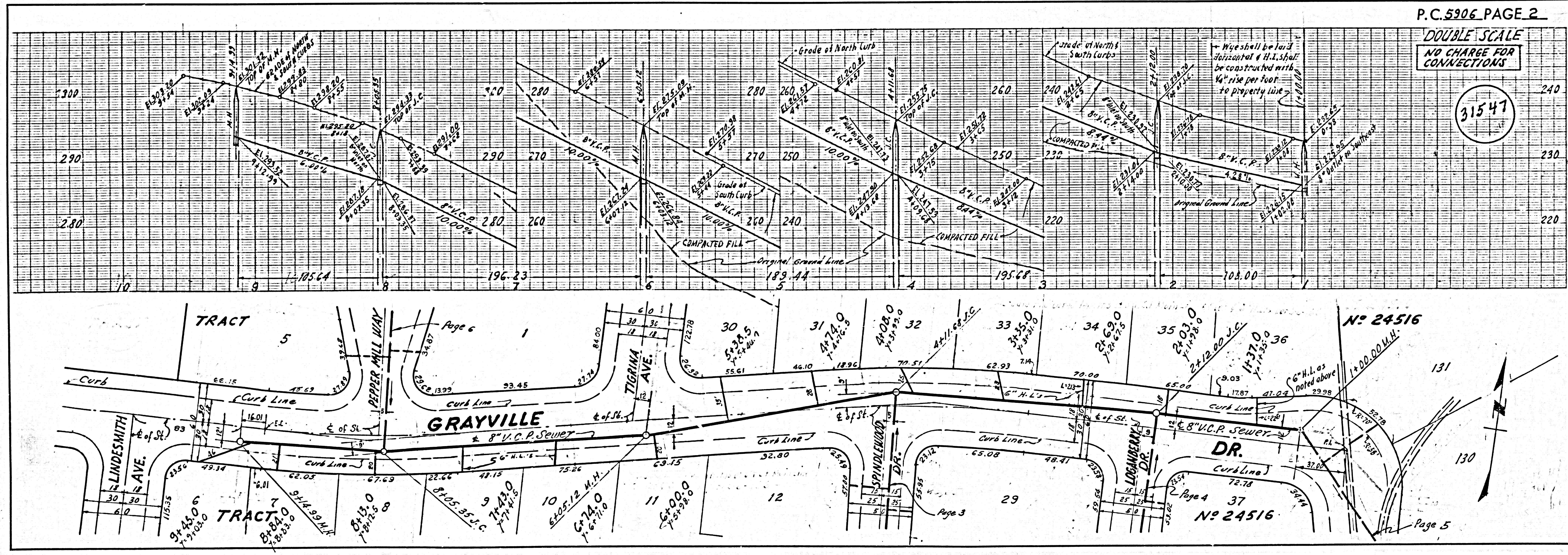
- NOTES:
1. PROVIDE STAKES ON THE PROPERTY LINE OR PROPERTY LINES PRODUCED AT RIGHT ANGLES TO THE SEWER LINE AT THE CENTER LINE OF EACH MANHOLE.
 2. NO REPRESENTATIVE OF THE COUNTY ENGINEER WILL SURVEY OR LAY OUT ANY PORTION OF THE WORK.
 3. THE OWNER OR HIS AUTHORIZED REPRESENTATIVE SHALL FURNISH THE COUNTY ENGINEER WITH GRADE SHEETS AND STATIONING FOR ALL HOUSE LATERALS AND Y BRANCHES AND SHALL PROVIDE STAKES FOR THEM AT THEIR PROPER LOCATIONS WITH STATIONING PLAINLY MARKED. ANY CHANGE IN LOCATION SHALL BE REQUESTED IN WRITING BY THE OWNER OR HIS REPRESENTATIVE.
 4. THE PRIVATE ENGINEER SHALL FURNISH THE HOUSE LATERAL DEPTH AT THE PROPERTY LINE BELOW THE TOP OF CURB ELEVATION FOR EACH HOUSE LATERAL ON THE GRADE SHEET.
 5. NO REVISIONS SHALL BE MADE IN THESE PLANS WITHOUT THE APPROVAL OF THE COUNTY ENGINEER.
 6. USE STANDARD MANHOLE FRAMES AND COVERS, S-117, EXCEPT AS NOTED.
 7. USE EXTRA STRENGTH PIPE, ALL PIPE IS STANDARD DEPTH (EXCEPT AS NOTED)
 8. USE CEMENT MORTAR OR "WEDGE-LOCK" OR "SPEED-SEAL" FOR ALL V.C.P. JOINTS PER SPECS, SECS. 34 & 48.
 9. RESURFACE ALL TRENCH WITHIN PAVED AREA TO MEET L.A. COUNTY ROAD DEPT. OR CALIF. STATE HIGHWAY REQUIREMENTS IN ACCORDANCE WITH PERMITS.
 10. ENCASE FOUR FEET OF SEWER AT POINTS OF INTERFERENCE WITH POLES, CASE III, S-172.
 11. HOUSE LATERALS TO BE CONSTRUCTED WITH INVERTS AT PROPERTY LINE... FEET BELOW CURB GRADE EXCEPT AS NOTED.
 12. ALL STRUCTURES SHALL BE BRICK SEWER STRUCTURES, S-104, EXCEPT AS NOTED.
 13. FOR ALLOWABLE LEAKAGE TEST USE FORMULA NO. 1, SPECS, SEC. 34.
 14. MANHOLE TOPS IN UNIMPROVED RIGHTS-OF-WAY TO BE SIX INCHES ABOVE FINISHED GRADE.
 15. THE CONTRACTOR SHALL NOTIFY THE CONSTRUCTION DIVISION BY TELEPHONE, MADISON 9-4747, EXT. 81251 AT LEAST TWENTY-FOUR HOURS BEFORE STARTING ANY WORK UNDER THIS CONTRACT.
 16. STANDARD SPECIFICATIONS DATED OCTOBER 10, 1948, SHALL APPLY IN THE CONSTRUCTION OF THIS PROJECT, TOGETHER WITH SPECIFICATIONS FOR CONSTRUCTION OF SEWAGE PUMPING STATION & APPURTENANCES THEREON.
 17. (a) NO CONSTRUCTION WILL BE PERMITTED IN FILLED AREAS UNLESS ACCEPTABLE CERTIFICATION IS SUBMITTED TO THE CONSTRUCTION DIVISION OF THE COUNTY ENGINEER'S DEPARTMENT THAT RELATIVE COMPACTION IS GREATER THAN 90%.
 - (b) IF COMPACTION IS LESS THAN 90%, THE SEWER MUST BE CRADLED AS SHOWN ON THE PLANS, PER S-4-166.
 - (c) IF COMPACTION IS GREATER THAN 90%, CRADLING IS NOT REQUIRED.
 - (d) HOWEVER, JOINT COMPOUND MUST BE SUBSTITUTED FOR CEMENT MORTAR FOR ALL JOINTS IN FILLED AREAS.

NO CONNECTIONS FOR THE DISPOSAL OF INDUSTRIAL WASTES SHALL BE MADE TO SEWERS SHOWN ON THESE DRAWINGS WITHOUT WRITTEN PERMISSION FROM THE CHIEF ENGINEER AND GENERAL MANAGER OF THE COUNTY SANITATION DISTRICTS.

NO CHARGE FOR CONNECTION
 25 Hickland 10-18-61

NOTE:
 GRADES TO WHICH THIS IMPROVEMENT IS TO BE CONSTRUCTED ARE SHOWN ON PLANS AND PROFILES. GRADE POINTS FOR TOP OF CURBS, CENTER LINE OF STREETS, OR CENTER LINE OF ALLEYS ARE SHOWN BY CIRCLES ON PROFILES. AT ALL POINTS BETWEEN DESIGNATED POINTS THE GRADE SHALL BE ESTABLISHED SO AS TO CONFORM TO A STRAIGHT LINE DRAWN BETWEEN SAID DESIGNATED POINTS.
 ELEVATIONS ARE IN FEET ABOVE U.S.C. & G.S. SEA LEVEL DATUM OF 1929.
 THIS DRAWING AND THE DATA HEREON ARE HEREBY MADE A PART OF THE SPECIFICATIONS.
 WORK SHALL BE CONSTRUCTED ACCORDING TO SPECIFICATIONS ON FILE IN THE OFFICE OF THE COUNTY ENGINEER AND SHALL BE PROSECUTED ONLY IN THE PRESENCE OF THE COUNTY ENGINEER.
 BEFORE WORK CAN BE STARTED, THE CONTRACTOR MUST OBTAIN A PERMIT TO EXCAVATE IN COUNTY STREETS FROM THE L. A. COUNTY ROAD DEPT., DISTRICT OFFICE NO. 4 - AND PAY A FEE TO THE COUNTY ENGINEER, ROOM 316, COUNTY ENGINEERING BLDG., 18 W. 2ND ST., SUFFICIENT TO COVER THE COST OF CONSTRUCTION INSPECTION AND RECORD PLANS.
 APPROVAL OF THIS PLAN BY THE COUNTY OF LOS ANGELES DOES NOT CONSTITUTE A REPRESENTATION AS TO THE ACCURACY OF THE LOCATION OF OR THE EXISTENCE OR NON-EXISTENCE OF ANY UNDERGROUND UTILITY PIPE, OR STRUCTURE WITHIN THE LIMITS OF THIS PROJECT. THIS NOTE APPLIES TO ALL PAGES.
 IF WORK IS TO BE DONE IN A STATE HIGHWAY, A PERMIT MUST BE OBTAINED FROM THE STATE OF CALIFORNIA, DIVISION OF HIGHWAYS, 1200 SOUTH SPRING STREET.

COUNTY OF LOS ANGELES, CALIFORNIA
 APPROVED, JOHN A. LAMBE, COUNTY ENGINEER
 APPROVED, J. J. PARKMAN, CHIEF ENGINEER
 CO. SAN. DIST. NO. 42
 BY: [Signature] OFFICE ENGINEER
 CHECKED BY: [Signature] 10-20-61
 OFFICE OF COUNTY ENGINEER, REG. C. E. NO. 2456
 SUBMITTED BY: [Signature] OCT. 19, 1961
 ACTING LOS CERRITOS REGIONAL ENGINEER, C.E. 7860

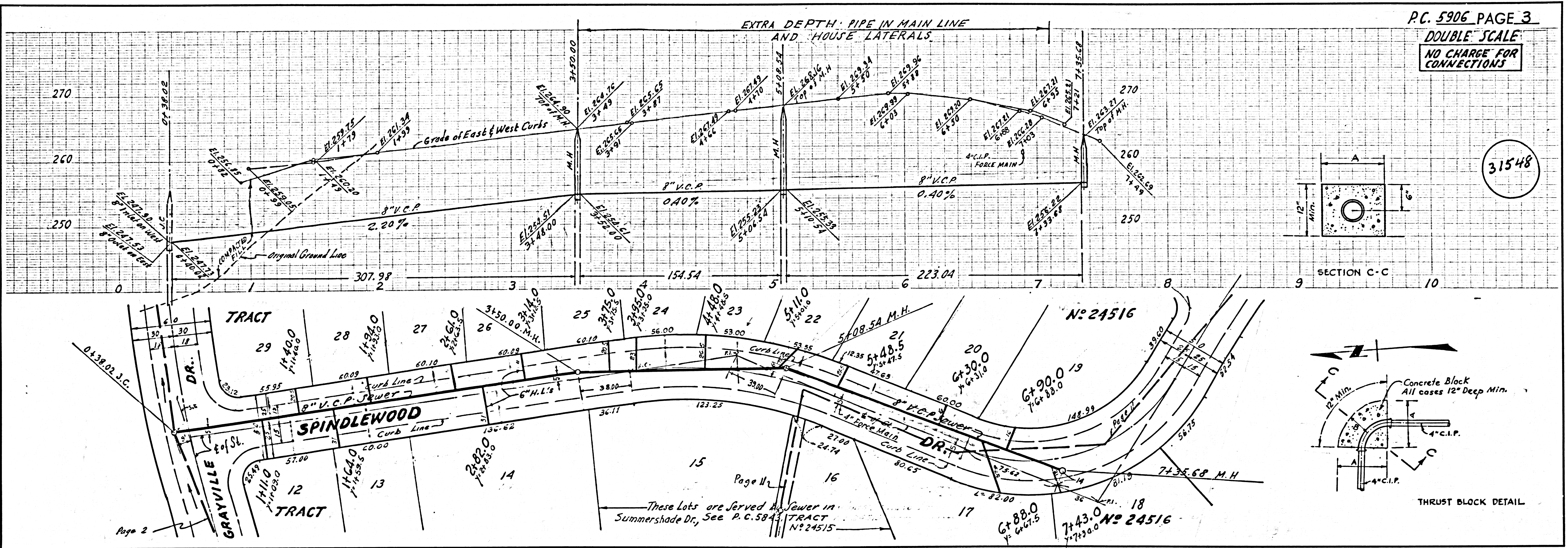


P.C. 5906 PAGE 2
 DOUBLE SCALE
 NO CHARGE FOR CONNECTIONS

31547

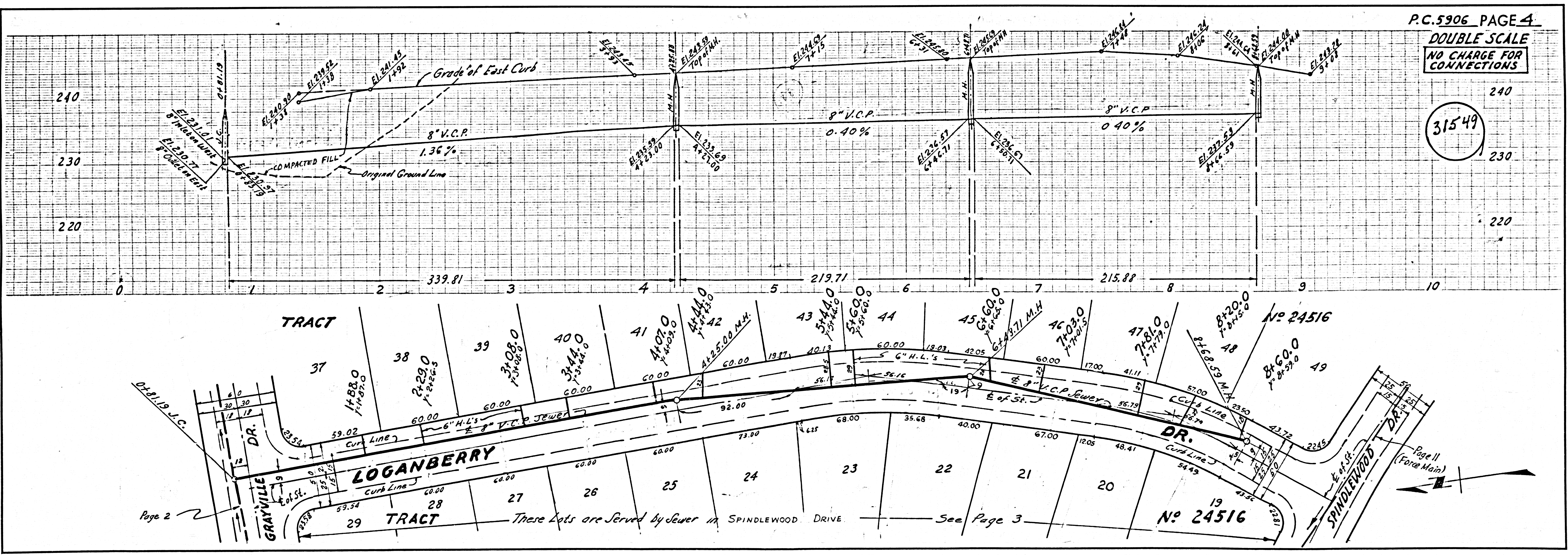
DOUBLE SCALE
NO CHARGE FOR CONNECTIONS

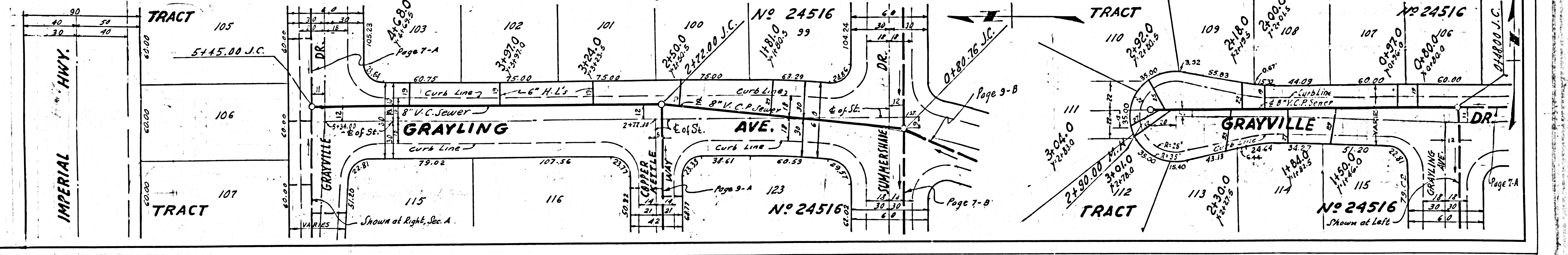
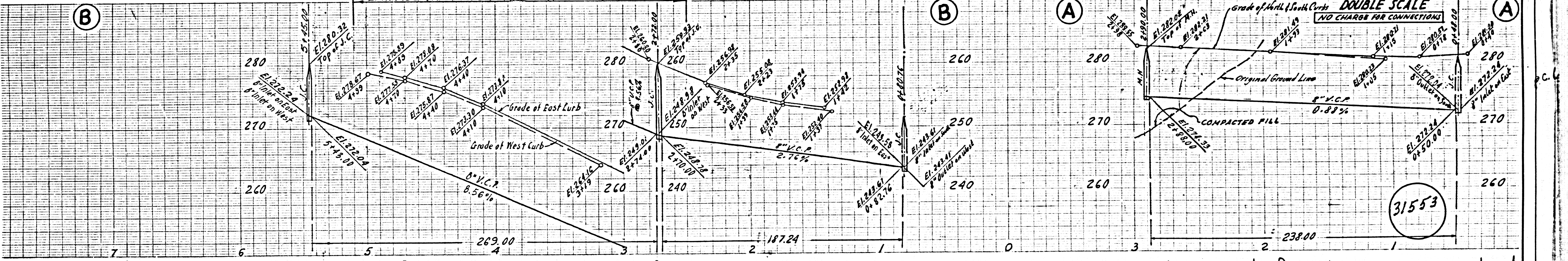
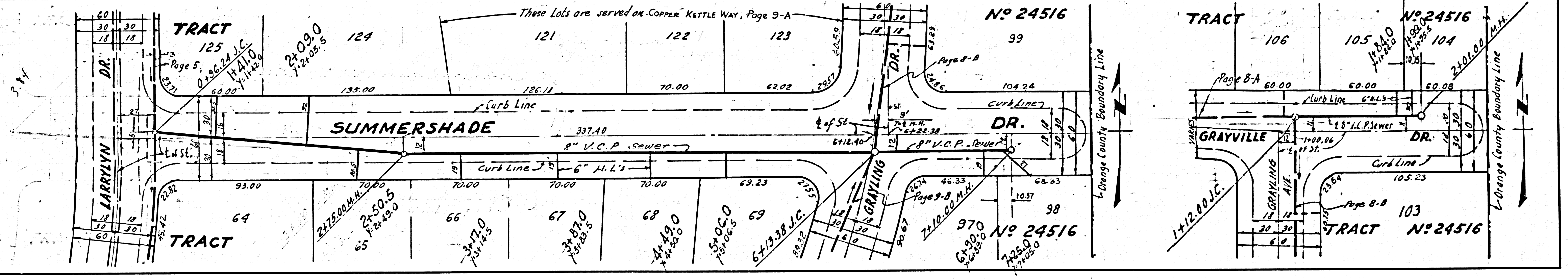
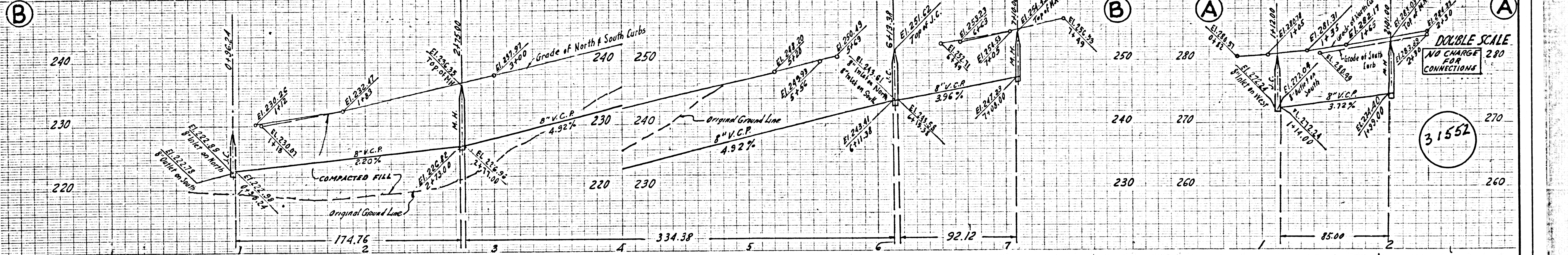
31548

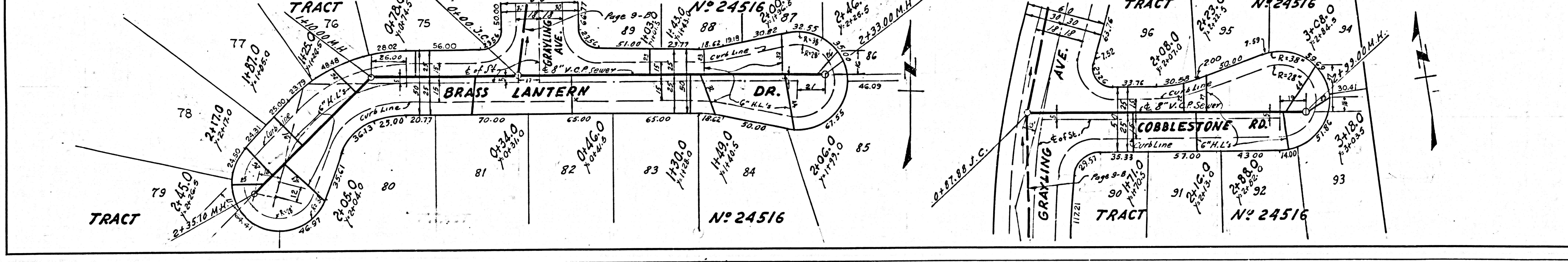
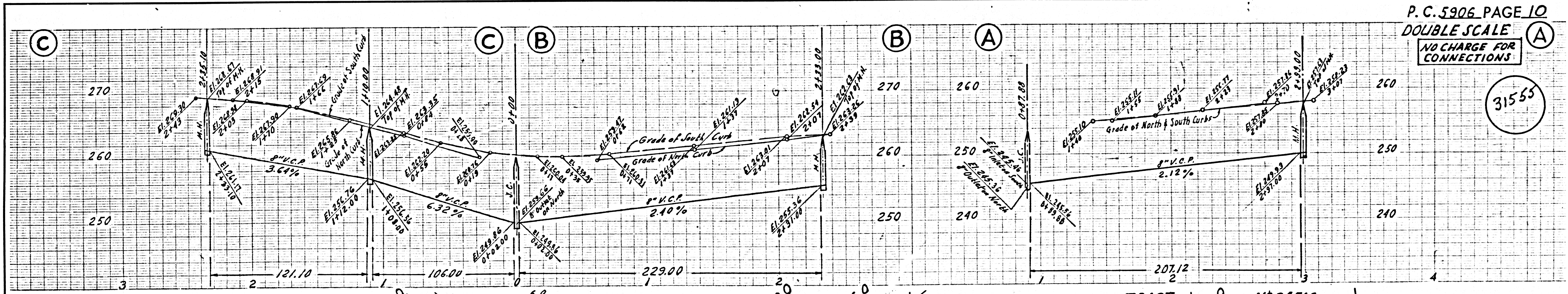
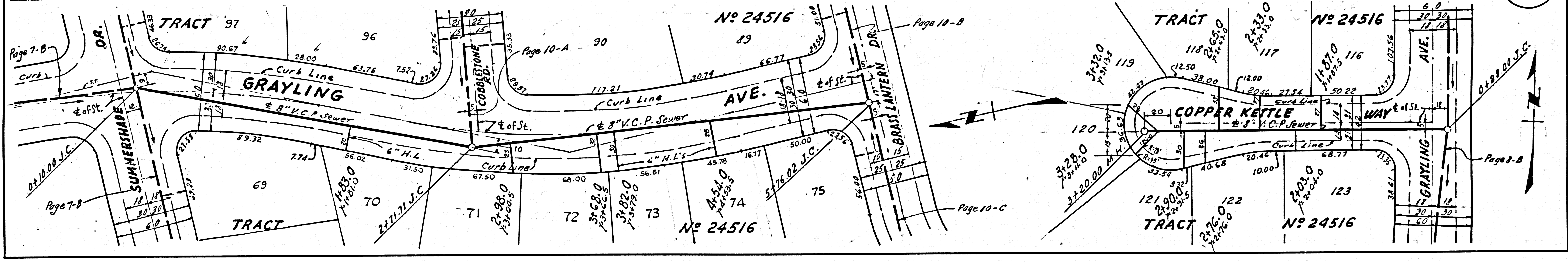
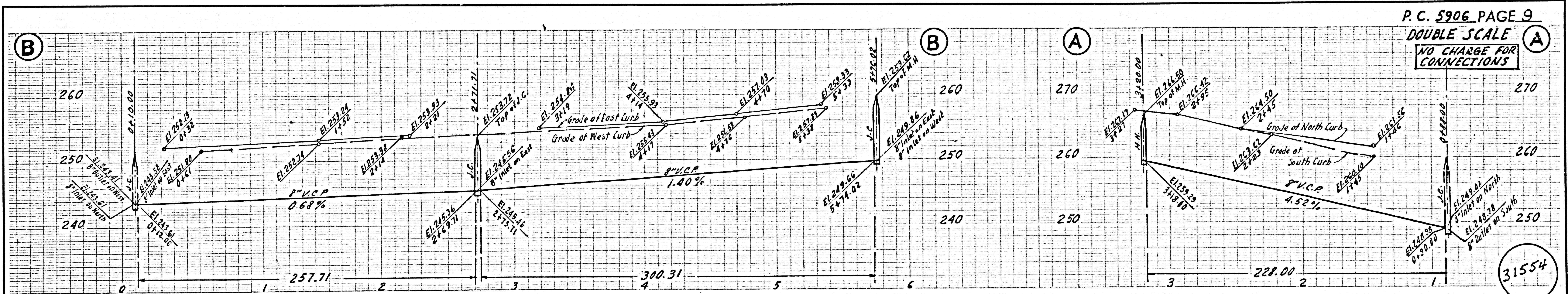


DOUBLE SCALE
NO CHARGE FOR CONNECTIONS

31549







MATERIAL LIST

31557

ITEM	QUANTITY	DESCRIPTION
①	2	Wemco Torque Flow Model "C", 4"x3" pumps, operating at 1600 R.P.M. and capable of delivering 110 g.p.m. each at 103 ft. T.D.H.
②	2	10 H.P., 1750 R.P.M., 720V, 3Ø, 60 cycle, water proof motors to be mounted piggyback
③	2	Variable speed (1500 R.P.M. to 1750 R.P.M.) V-belt drives with safety shields
④	1	1/2 H.P., 1725 R.P.M., 110 V, 1Ø, 60 cycle Buffalo Forge Co. Size "C" Blower
⑤	1	Yeomans Drain Dri. No. D-2 Model Y. Sump Pump, with diving bell, 1/4 H.P., 1750 R.P.M., 110V, 1Ø, 60 cycle, vapor proof or equal.
⑥	1	Model Y-59 "Sealtrode" Sealed Electrode Floatless Pump Controller assembly or equal, with separate control box containing relays for operating pumps, in a NEMA enclosure, for operation on 210 V, 3Ø, 60 cycle current.
⑦	1	Switch for lights and blower (vapor proof), 2 poles.
⑧	1	Crouse-Hinds Arlette plug and receptacle A.E.Q.-1338, cast bronze cover and ARJ-3383 plug
⑨	2	Crouse-Hinds vapor proof light fixture, A.R.B.-41 form 200, 200W or equal
⑩	1	Explosion proof light fixture, 150 watt
⑪	2	4" dresser coupling style N# 53 with neoprene gasket.
⑫	2	4" double disc 0.5" and V Flanged, brass trimmed gate valve Crane No. 483 per Crane Catalog No. 60, or equal. 2 with extension stems.
⑬	2	3"x4" eccentric reducer, flanged
⑭	2	4" swing check valve iron body, brass trimmed Crane No. 383 per Crane Catalog No. 60, or equal
⑮	3	4"x4"x4" Flanged double sweep tee
⑯	2	4" blind flange
⑰	4	3/4" adj. swing hanger flange with pipe clamps, bolt to conc.
⑱	18 1/2 lin. ft.	6" transit pipe. (Air exhaust and intake)
⑲	4	4" cast iron pipe in station (flanged) class 150.
⑳	1	1/2" swing check valve, brass disc, Crane No. 34 per Crane Catalog No. 60 or equal
㉑	1	1/2" gate valve, Crane No. 440, per Crane Catalog No. 60 or equal.
㉒	14 1/2 lin. ft.	1 1/2" galv. iron pipe (from sump pump to wet well) and fittings.
㉓	2	12" dia steel pipe vent cover per sec. A.A. this sheet.
㉔	1	8" dia steel pipe vent cover per sec. A.A. this sheet.
㉕	1	1/2" galv. chain, snap fastener each end (Maint. Door Lockdown)
㉖	2	6" creosoted wooden poles (Ely pole 25' long, W/ly pole 12'-6" long)
㉗	1	Back water valve - 3/4" Beeco E.C. Model 12.
㉘	1	3/4" Special Brass Diamond street washer with concealed hinge Alhambra Foundry Co. Plate A-392-A. Install with lockable cover or approved equal.
㉙	1	4" C.I. long radius 45° elbow.

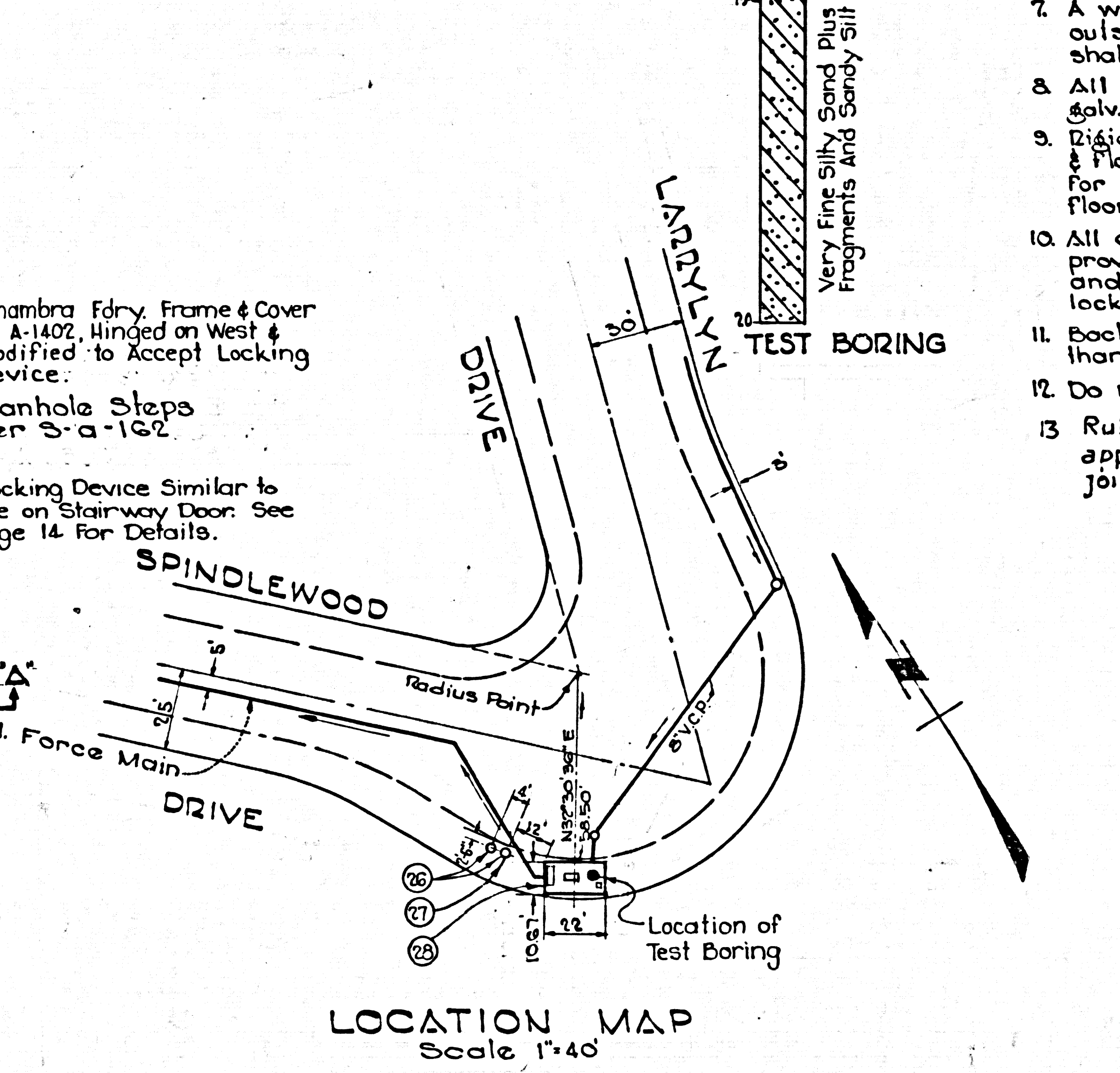
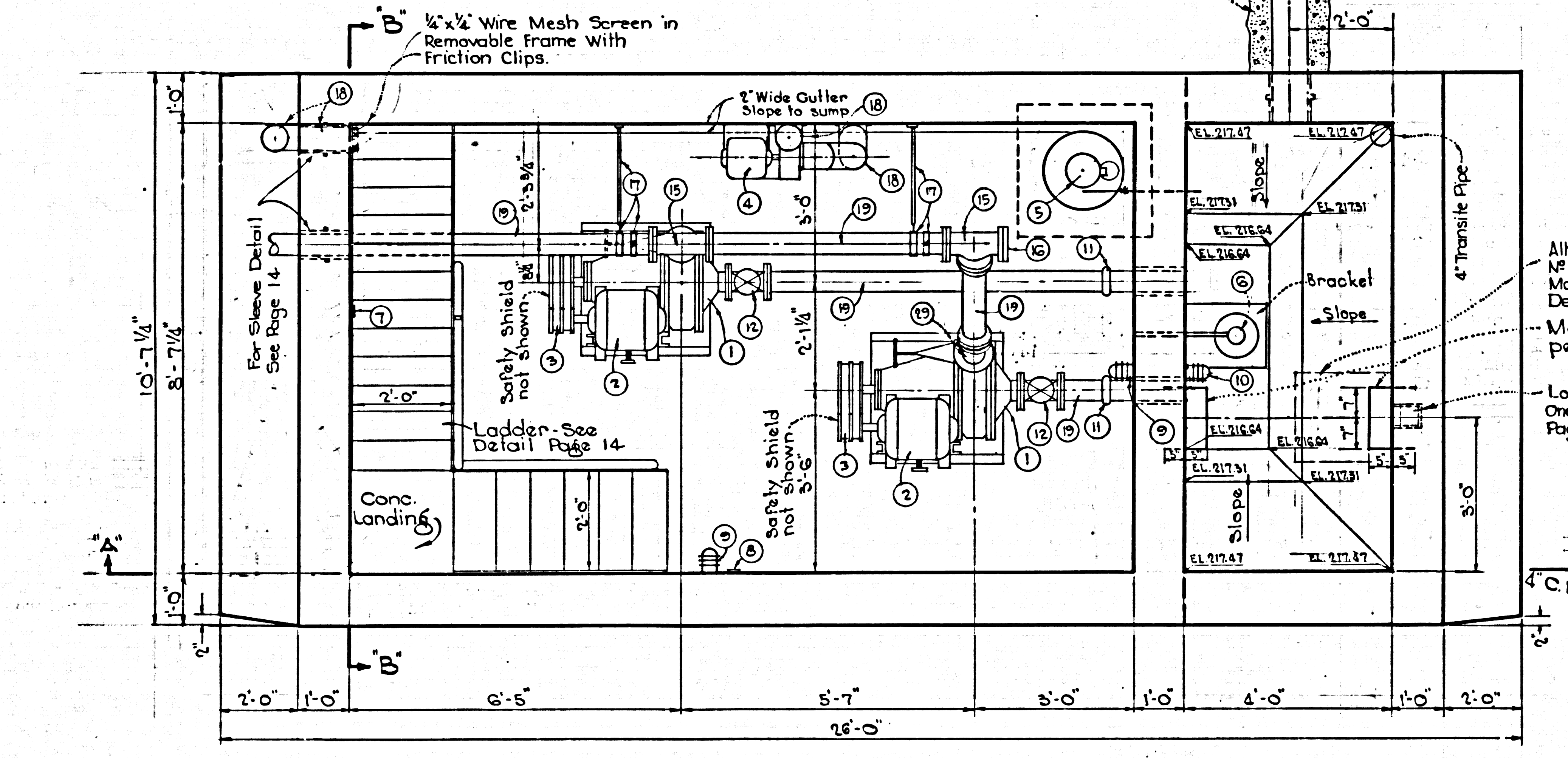
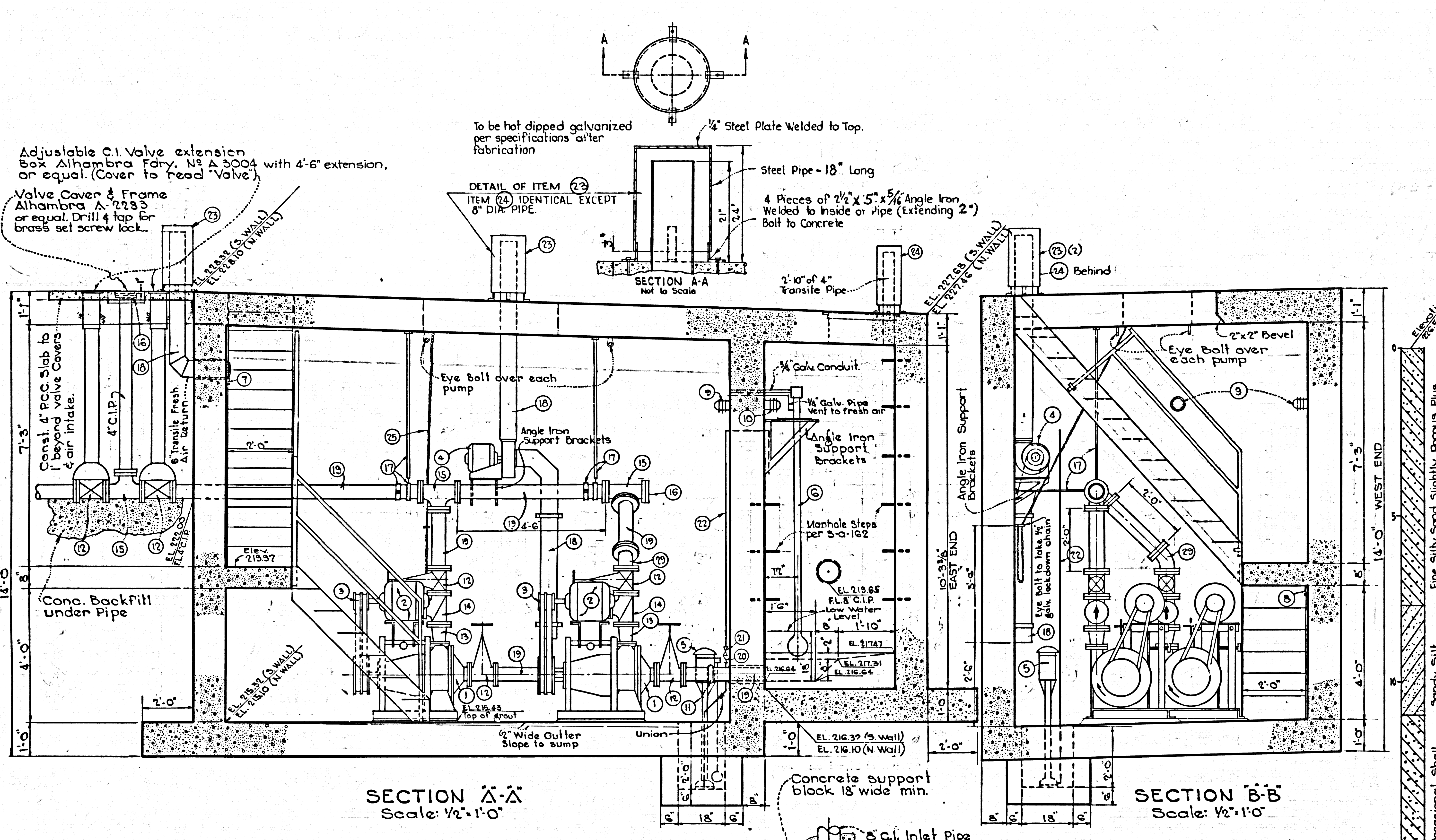
GENERAL NOTES

1. Ultimate strength of concrete (28 day) 3000 P.S.I. min.
2. Use intermediate grade reinforcing bars (20,000 P.S.I.)
3. The contractor shall contact the So. Calif. Edison Co. for power service.
4. The contractor shall contact Southwest Water Co. (Ph. Ed. 34521) to provide water service to line street washer.
5. If a centrifugal pump other than the type specified should be installed, the contractor shall be responsible for setting any necessary bolts, fittings, etc.
6. Electric conduit shall be underground from power pole to pump station.
7. A waterproof membrane or coating shall be applied to the outside of the pump station. The membrane or coating shall extend to 6" below top of top slab.
8. All pipes shall be securely fastened to the walls with galv. iron pipe straps.
9. Rigid electrical conduit shall be embedded within the walls & floor of the structure and shall be vapor proof. Conduit for the pumps to be brought to the pumps through the floor. Separate connection for each pump.
10. All overload protection for electrical equipment shall be provided by circuit breakers incorporating time overcurrent and instantaneous short circuit protection with means for locking them in open position.
11. Backfilling around station to be compacted to not less than 90% compaction at optimum moisture content.
12. Do not backfill around structure until top slab is poured.
13. Rubber water stops, Gates Rubber Co. Size 6"x3/8" or approved equal, shall be placed at all construction joints.

PREPARED IN THE OFFICE OF:
 BROWN ENGINEERING
 7632 COMMONWEALTH AVE.
 BUENA PARK, CALIFORNIA
 PH: LAWRENCE 1-6633

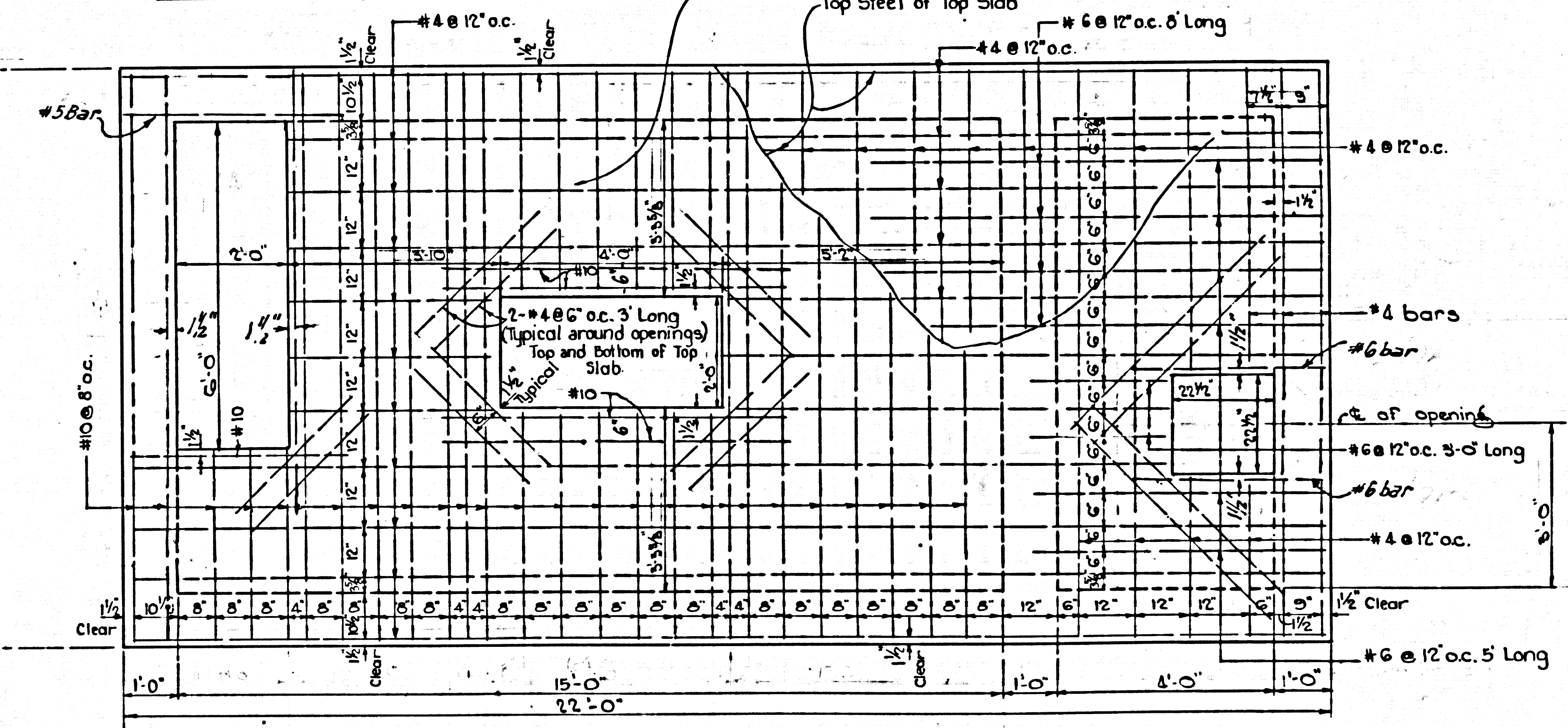
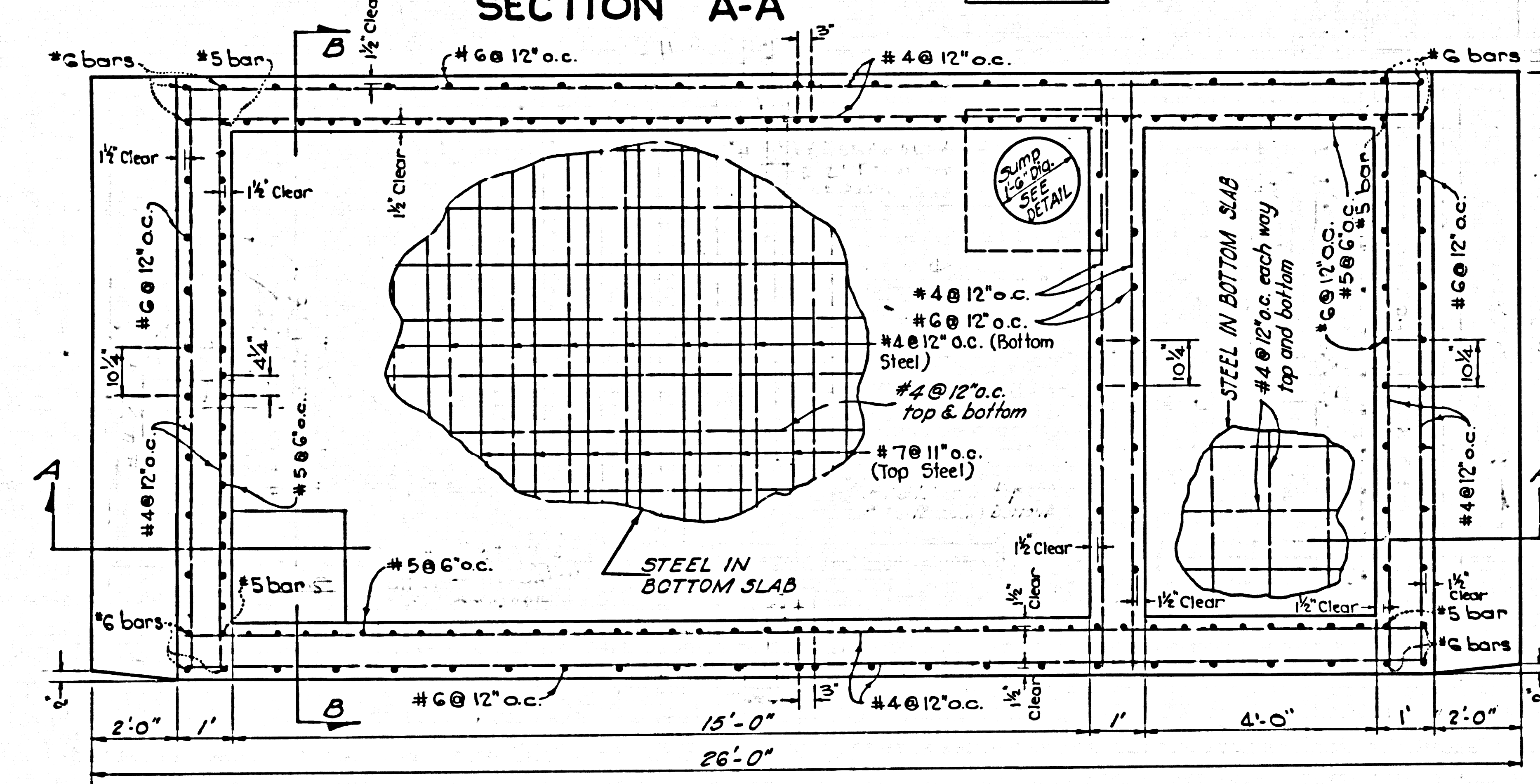
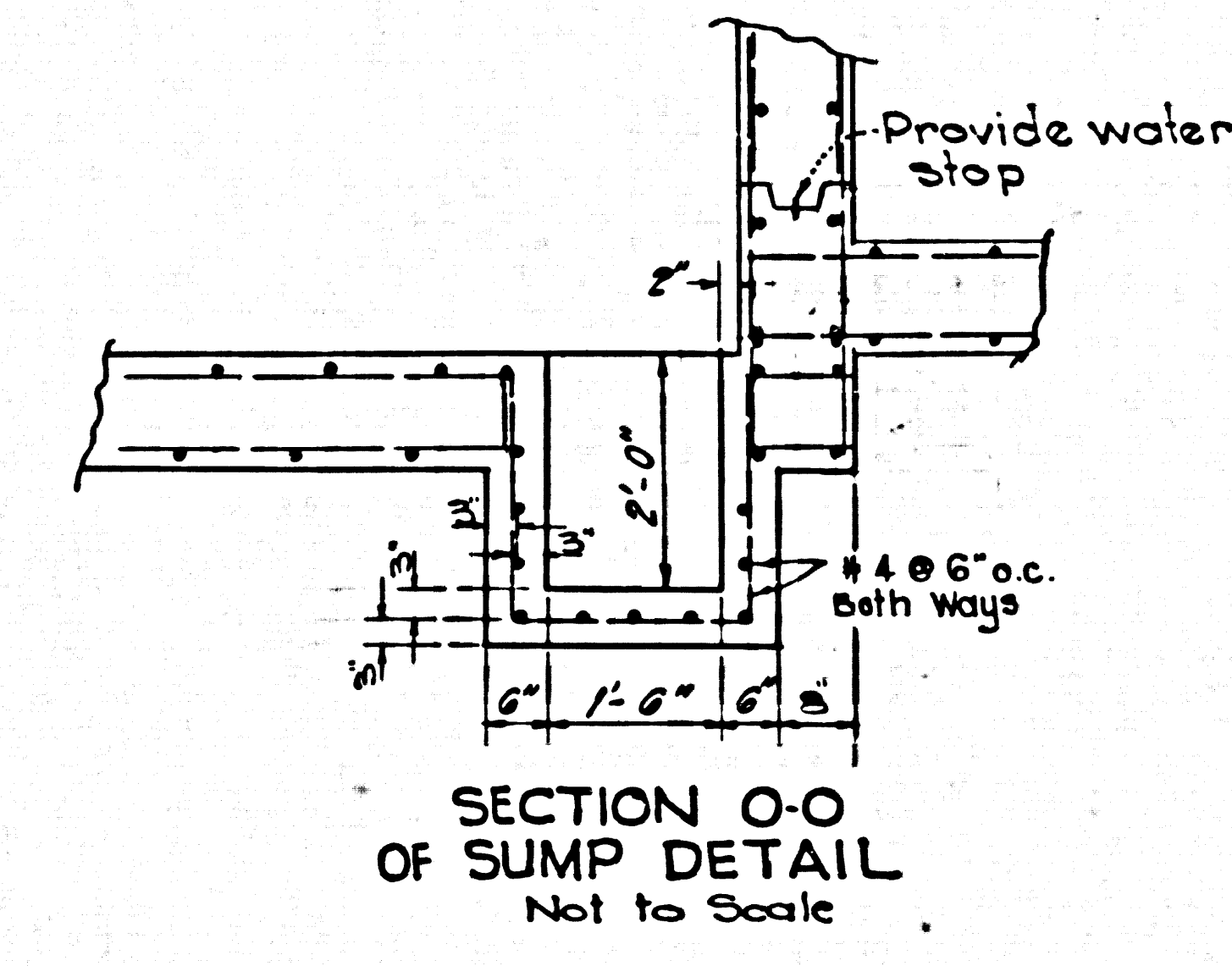
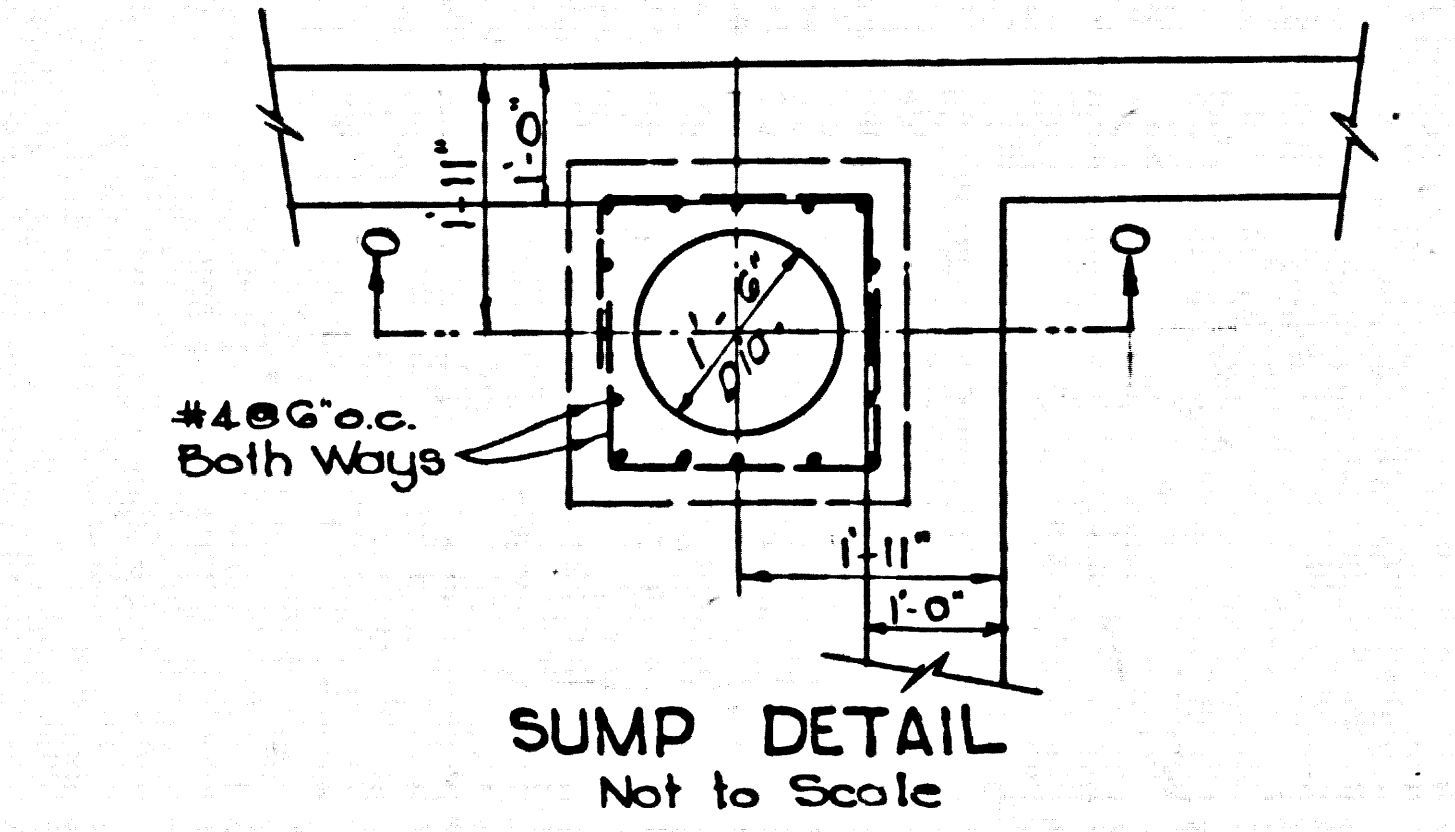
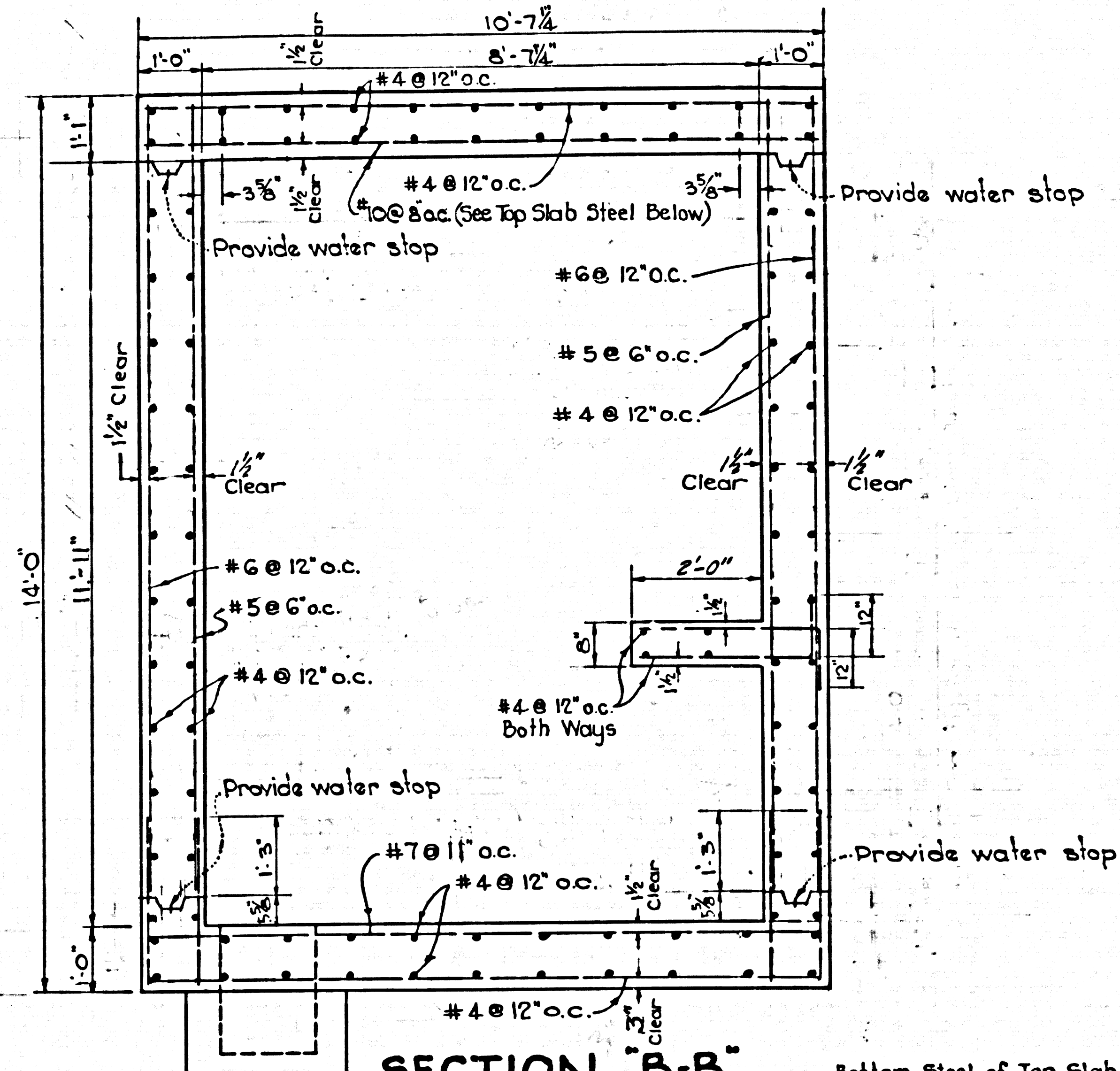
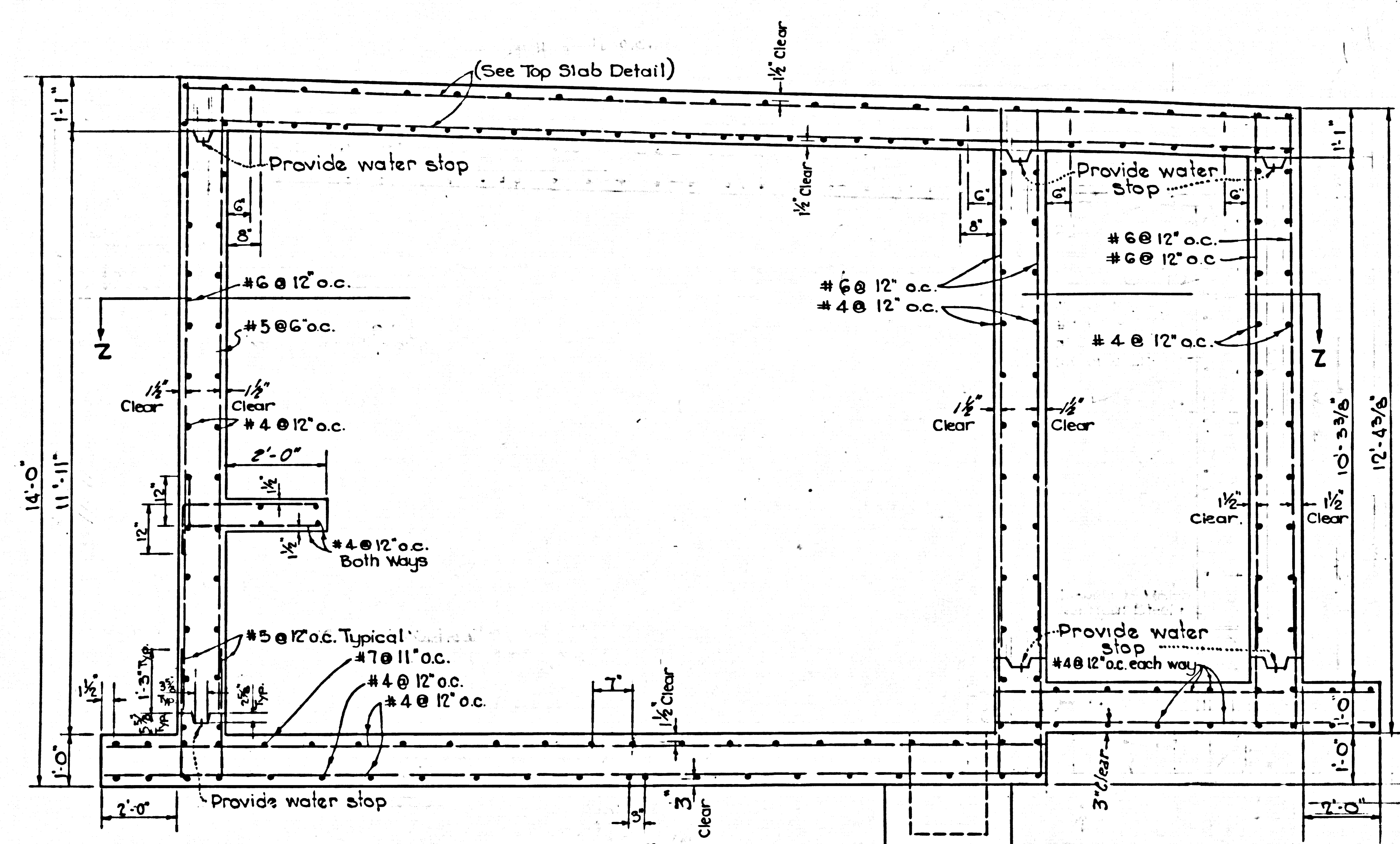
George D. Stringer
 GEORGE D. STRINGER R.C.E. No. 45

PRIVATE CONTRACT NO. 5906
 SEWAGE LIFT STATION
PLAN AND ELEVATIONS
 COUNTY OF LOS ANGELES



NOTE: Figures in circles indicate item numbers.

31558



SCALE 1/2" = 1'-0"

PREPARED IN THE OFFICE OF:
BROWN ENGINEERING
7632 COMMONWEALTH AVE.
BUENA PARK, CALIFORNIA
PH. LAWRENCE 1-6633

George H. Stringer
GEORGE H. STRINGER, P.E. 8/45

PRIVATE CONTRACT NO 5906
SEWAGE LIFT STATION
REINFORCING DETAILS
COUNTY OF LOS ANGELES

JULY, 1961 SCALE AS SHOWN PAGE 13

