

P.C. 5907

# SAN DIMAS BLDG. DIST. NO. 10

PROFILE ALIGNMENT AND GRADE OF **P.C. 5907**  
**SANITARY SEWERS PAGE 1**  
TO BE CONSTRUCTED IN  
**CITRUS AVE.**  
SOUTH OF ALOSTA AVE.

**PRIVATE CONTRACT NO. 5907**

W.S. 47  
1 SHEET OF 2 PAGES  
SCALE: VERT. 1"=4'  
HORIZ. 1"=40'  
MAY, 1961  
PREPARED IN THE OFFICES OF  
**L.D. LEEPER & ASSOC.**  
REG. C. E. NO. 3795  
BY: *L.D. Leeper*  
FOR LEGEND SEE PLAN NO. S-A-64

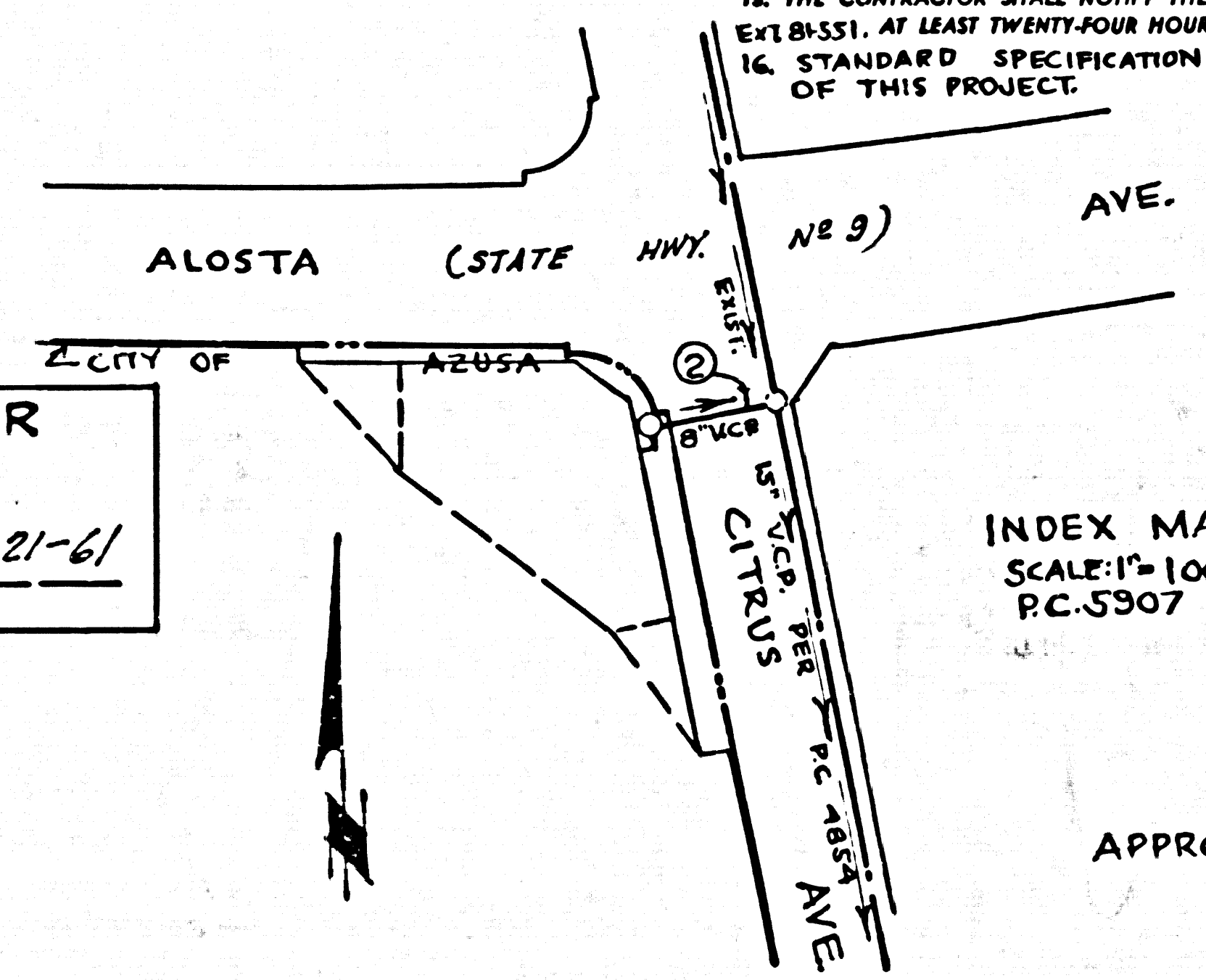
31145

B.M. RD. DEPT. 56 1171, EL. 625.688  
BASELINE 1953, CO. SUR. MON.  
NEAR INT. OF CITRUS AVE.  
AND FOOTHILL BLVD. TO WEST  
T.R.M. FL. OF M.H. STA. H8499  
PER RC. 4884 ELEV. 606.86

- GENERAL NOTES (CITY OF AZUSA)
1. ALL WORK TO BE DONE WITHIN CITY OF AZUSA SHALL BE IN ACCORDANCE WITH THE CITY ENGINEER'S SPECIFICATIONS AND ALL WORK SHALL BE SUBJECT TO THE APPROVAL OF THE CITY ENGINEER.
  2. ALL CONSTRUCTION SHALL BE IN ACCORDANCE WITH THE CITY OF AZUSA SPECIFICATIONS AND ALL WORK SHALL BE SUBJECT TO THE APPROVAL OF THE CITY ENGINEER.
  3. CONTRACTOR SHALL BE RESPONSIBLE FOR OBTAINING ALL NECESSARY PERMITS FROM THE CITY OF AZUSA AND THE COUNTY OF LOS ANGELES.
  4. ALL HOUSE LATERALS TO BE CONSTRUCTED IN ACCORDANCE WITH THE CITY OF AZUSA SPECIFICATIONS AND ALL WORK SHALL BE SUBJECT TO THE APPROVAL OF THE CITY ENGINEER.
  5. EVERY HOUSE LATERAL TO HAVE AT LEAST 3' OF COVER AT PROPERTY LINE.

- NOTES:
1. PROFILE STAKES ON THE PROPERTY LINE OR PROPERTY LINES PRODUCED AT RIGHT ANGLES TO THE SEWER LINE AT THE CENTER LINE OF EACH MANHOLE.
  2. NO REPRESENTATIVE OF THE COUNTY ENGINEER WILL SURVEY OR LAY OUT ANY PORTION OF THE WORK.
  3. THE OWNER OR HIS AUTHORIZED REPRESENTATIVE SHALL FURNISH THE COUNTY ENGINEER WITH GRADE SHEETS AND STATIONING FOR ALL HOUSE LATERALS AND Y BRANCHES AND SHALL PROVIDE STAKES FOR THEM AT THEIR PROPER LOCATIONS WITH STATIONING PLAINLY MARKED. ANY CHANGE IN LOCATION SHALL BE REQUESTED IN WRITING BY THE OWNER OR HIS REPRESENTATIVE.
  4. THE PRIVATE ENGINEER SHALL FURNISH THE HOUSE LATERAL DEPTH AT THE PROPERTY LINE BELOW THE TOP OF CURB ELEVATION FOR EACH HOUSE LATERAL ON THE GRADE SHEET.
  5. NO REVISIONS SHALL BE MADE IN THESE PLANS WITHOUT THE APPROVAL OF THE COUNTY ENGINEER.
  6. USE STANDARD MANHOLE FRAMES AND COVERS, 5-177-A.
  7. USE STANDARD STRENGTH PIPE.
  8. USE "WEDGE-LOCK" OR "SPREAD-SEAL" FOR ALL V.C.P. JOINTS PER SPECS., SECS. M & N.
  9. RESURFACE ALL TRENCH WITHIN PAVED AREA TO MEET L.A. COUNTY ROAD DEPT. OR CALIF. STATE HIGHWAY REQUIREMENTS IN ACCORDANCE WITH PERMITS.
  10. ENCASE FOUR FEET OF SEWER AT POINTS OF INTERFERENCE WITH POLES, CASE III, 5-172.
  11. HOUSE LATERALS TO BE CONSTRUCTED WITH MIN. 1/4" RISE PER FOOT TO PROPERTY LINE.
  12. ALL STRUCTURES SHALL BE BRICK SEWER STRUCTURES, 5-8-104.
  13. FOR ALLOWABLE LEAKAGE TEST USE FORMULA NO. 1, SPECS., SEC. 84.
  14. MANHOLE TOPS IN UNIMPROVED RIGHTS-OF-WAY TO BE SIX INCHES ABOVE FINISHED GRADE.
  15. THE CONTRACTOR SHALL NOTIFY THE CONSTRUCTION DIVISION BY TELEPHONE, MADRON 8-471, AT LEAST TWENTY-FOUR HOURS BEFORE STARTING ANY WORK UNDER THIS CONTRACT, AND CITY OF AZUSA STANDARD SPECIFICATION DATED OCTOBER 10, 1960 APPLY IN THE CONSTRUCTION OF THIS PROJECT.

**NO CHARGE FOR CONNECTIONS**  
*77.77 Dennis 8-21-61*



NO CONNECTIONS FOR THE DISPOSAL OF INDUSTRIAL WASTES SHALL BE MADE TO SEWERS SHOWN ON THESE DRAWINGS WITHOUT WRITTEN PERMISSION FROM THE CHIEF ENGINEER AND GENERAL MANAGER OF THE COUNTY SANITATION DISTRICTS.

NOTE:  
GRADES TO WHICH THIS IMPROVEMENT IS TO BE CONSTRUCTED ARE SHOWN ON PLANS AND PROFILES. GRADE POINTS FOR TOP OF CURBS, CENTER LINE OF STREETS, OR CENTER LINE OF ALLEYS ARE SHOWN BY CIRCLES ON PROFILES. AT ALL POINTS BETWEEN DESIGNATED POINTS THE GRADE SHALL BE ESTABLISHED SO AS TO CONFORM TO A STRAIGHT LINE DRAWN BETWEEN SAID DESIGNATED POINTS.  
ELEVATIONS ARE IN FEET ABOVE U.S.C. & G.S. SEA LEVEL DATUM OF 1929.  
THIS DRAWING AND THE DATA HEREON ARE HEREBY MADE A PART OF THE SPECIFICATIONS.  
WORK SHALL BE CONSTRUCTED ACCORDING TO SPECIFICATIONS ON FILE IN THE OFFICE OF THE COUNTY ENGINEER AND SHALL BE PROSECUTED ONLY IN THE PRESENCE OF THE COUNTY ENGINEER.  
BEFORE WORK CAN BE STARTED THE CONTRACTOR MUST OBTAIN A PERMIT TO EXCAVATE IN COUNTY STREETS FROM THE L.A. COUNTY ROAD DEPT., DISTRICT OFFICE NO. 1, AND PAY A FEE TO THE COUNTY ENGINEER'S DIVISION, COUNTY ENGINEER BUILDING, 708 W. 2<sup>ND</sup> ST., SUFFICIENT TO COVER THE COST OF CONSTRUCTION INSPECTION AND RECORD PLANS.  
APPROVAL OF THIS PLAN BY THE COUNTY OF LOS ANGELES DOES NOT CONSTITUTE A REPRESENTATION AS TO THE ACCURACY OF THE LOCATION OF OR THE EXISTENCE OR NON-EXISTENCE OF ANY UNDERGROUND UTILITY PIPE, OR STRUCTURE WITHIN THE LIMITS OF THIS PROJECT. THIS NOTE APPLIES TO ALL PAGES.  
IF WORK IS TO BE DONE IN A STATE HIGHWAY, A PERMIT MUST BE OBTAINED FROM THE STATE OF CALIFORNIA, DIVISION OF HIGHWAYS, 128 SOUTH SPRING STREET.

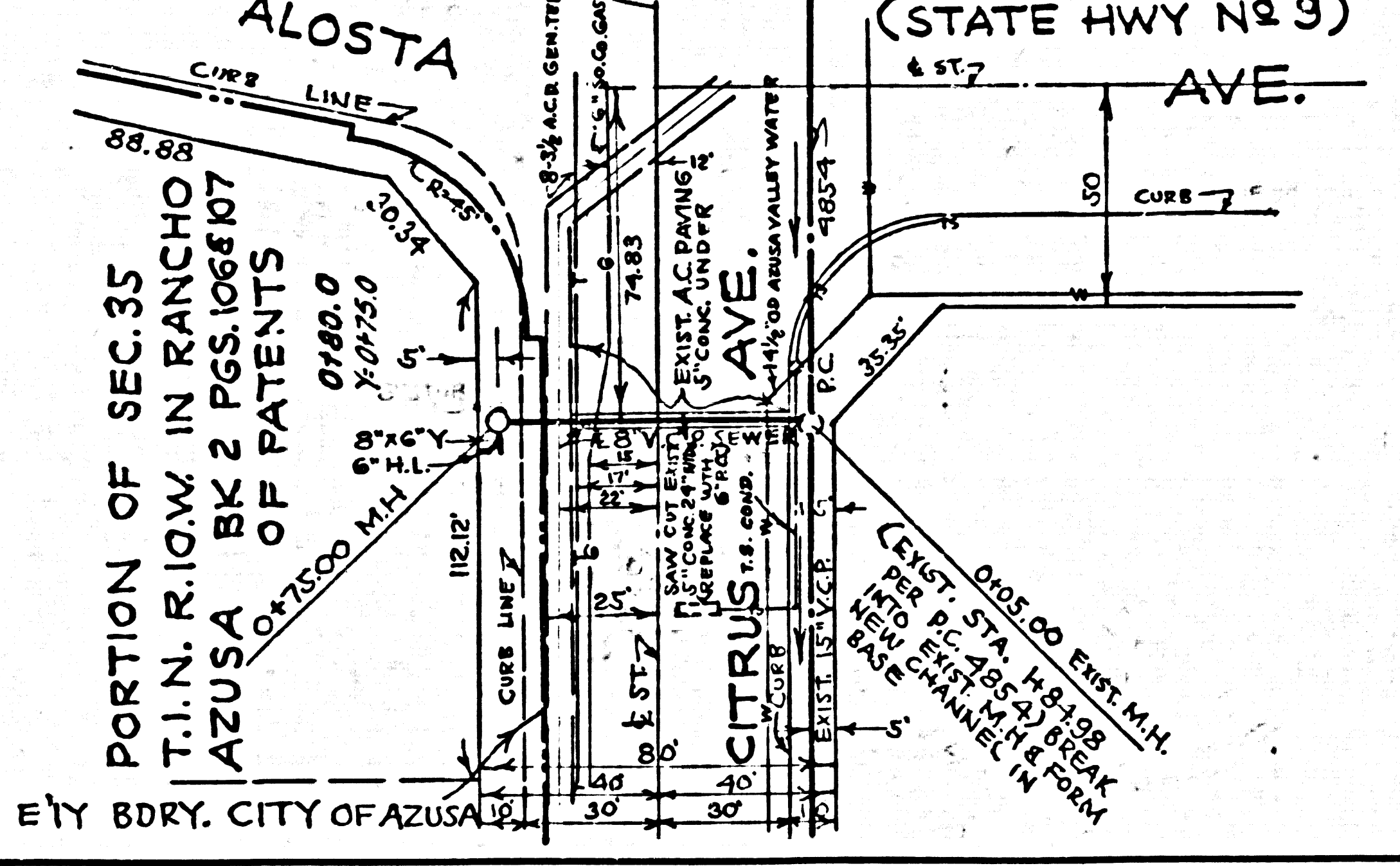
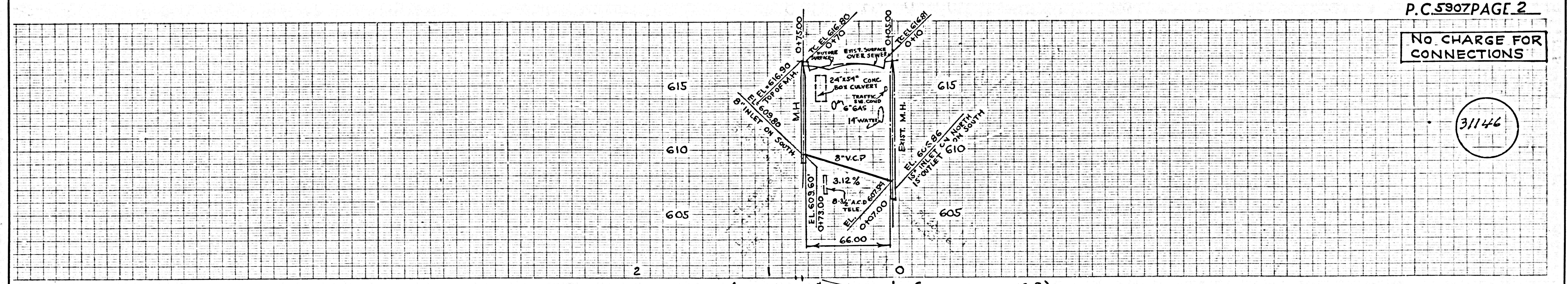
COUNTY OF LOS ANGELES, CALIFORNIA  
APPROVED, JOHN A. LAMBIE, COUNTY ENGINEER  
APPROVED, C.R. COMPTON, CHIEF ENGINEER  
BY: *C.R. Compton* ASS'T. SANITATION ENGINEER  
BY: *J.P. ...* OFFICE ENGINEER  
CHECKED BY: *S.K. ...*  
OFFICE OF COUNTY ENGINEER, REG. C. E. NO. 3406  
SUBMITTED BY: *R.M. Singletar*  
SAN DIMAS REGIONAL OFFICE

DESIGNED BY: C. R. COMPTON, CHIEF ENGINEER  
CHECKED BY: J. P. ...  
APPROVED BY: J. A. LAMBIE, COUNTY ENGINEER

P.C. 5907 PAGE 2

**NO CHARGE FOR CONNECTIONS**

31146



CITY OF AZUSA  
ENGINEER: *L.D. LEEPER*  
DATE: *MAY 1961*  
PROJECT: *CITRUS AVENUE*  
SHEET NO. *1* OF *2*

P.C. 2907