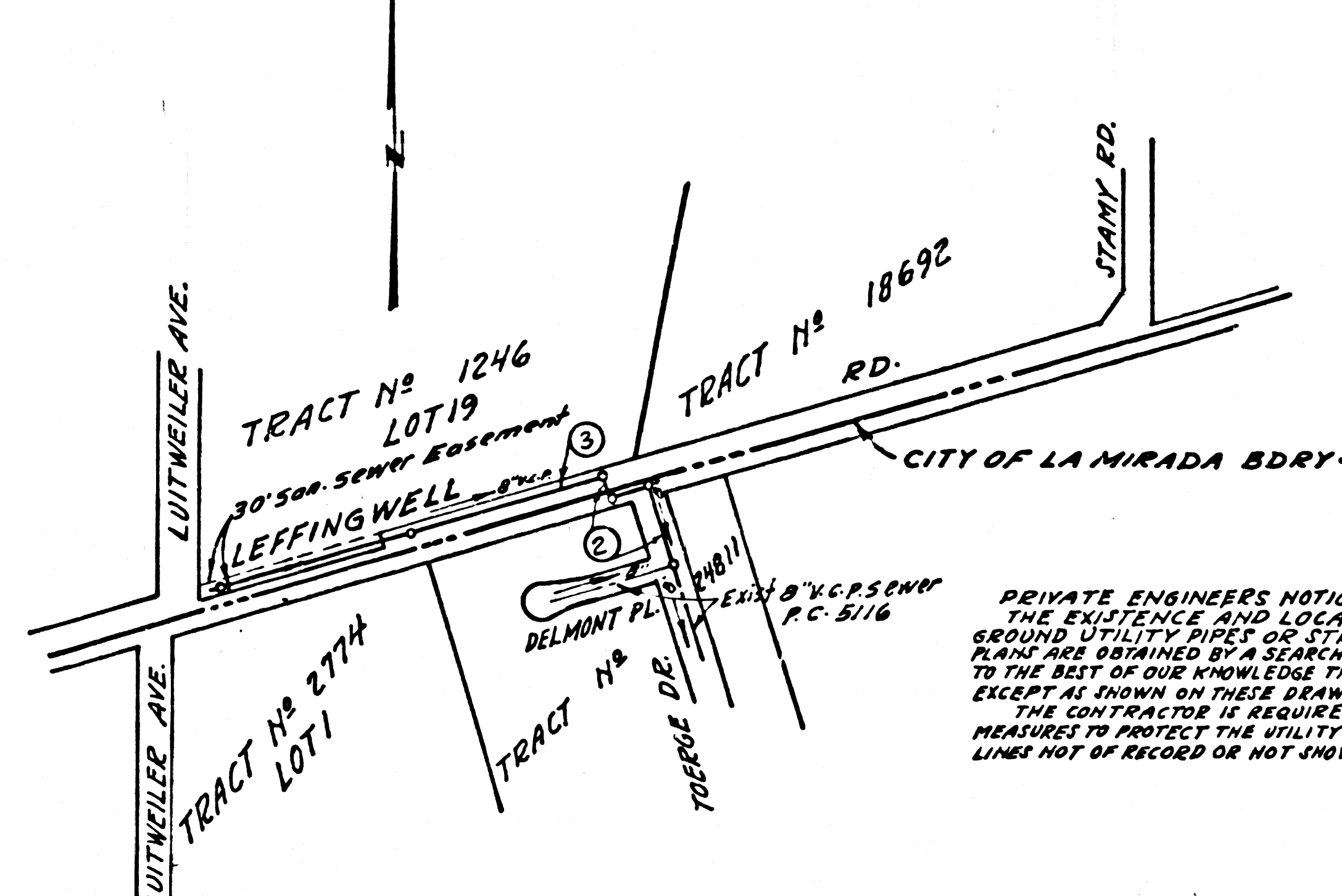


BENCH MARK
 SY-2736-Elev. 201.224
 L&N in conc. drwy. to house #15053
 Leffingwell Rd. ± 94' N of L
 Ed. Sta. 104+05 ± 1225' W. of c/L
 Stanny Rd. N. (LA MIRADA 1955 ADJ.)



REVISION
 PAGE 3
 EXTENSION OF MAIN LINE FROM STATION
 6+47.00 TO STATION 7+75.00 AND
 ADDITION OF THREE HOUSE LATERALS.
 APPROVED BY: *John D. Rose*
 REG. C.E. NR 12437

INDEX MAP
 SCALE 1"=300'
 P.C. 5917
 J.N. 0356-14

PRIVATE ENGINEERS NOTICE TO CONTRACTORS
 THE EXISTENCE AND LOCATION OF ANY UNDERGROUND UTILITY LINES OR STRUCTURES SHOWN ON THESE PLANS ARE OBTAINED BY A SEARCH OF THE AVAILABLE RECORDS TO THE BEST OF OUR KNOWLEDGE THERE ARE NO EXISTING UTILITIES EXCEPT AS SHOWN ON THESE DRAWINGS.
 THE CONTRACTOR IS REQUIRED TO TAKE DUE PRELIMINARY MEASURES TO PROTECT THE UTILITY LINES SHOWN AND ANY OTHER LINES NOT OF RECORD OR NOT SHOWN ON THESE DRAWINGS.

WHITTIER BLDG. DIST. NO. 11

PROFILE ALIGNMENT AND GRADE OF **P.C. 5917**
SANITARY SEWERS PAGE 1
 TO BE CONSTRUCTED IN J.N. 0356-14
LEFFINGWELL ROAD

PRIVATE CONTRACT NO. 5917

W.S. 34
 2 SHEETS; 3 PAGES
 SCALE: VERT. 1"=4' HORIZ. 1"=40'
 JUNE, 1961
 PREPARED IN THE OFFICES OF
KEMMERER ENGINEERING CO. INC.
 WHITTIER, CALIFORNIA
 BY: *Robert R. Flores*
 REG. C. E. NO. 11349

31321

- NOTES:
1. PROVIDE STAKES ON THE PROPERTY LINE OR PROPERTY LINES PRODUCED AT RIGHT ANGLES TO THE SEWER LINE AT THE CENTER LINE OF EACH MANHOLE.
 2. NO REPRESENTATIVE OF THE COUNTY ENGINEER WILL SURVEY OR LAY OUT ANY PORTION OF THE WORK.
 3. THE OWNER OR HIS AUTHORIZED REPRESENTATIVE SHALL FURNISH THE COUNTY ENGINEER WITH GRADE SHEETS AND STATIONING FOR ALL HOUSE LATERALS AND Y BRANCHES AND SHALL PROVIDE STAKES FOR THEM AT THEIR PROPER LOCATIONS WITH STATIONING PLAINLY MARKED. ANY CHANGE IN LOCATION SHALL BE REQUESTED IN WRITING BY THE OWNER OR HIS REPRESENTATIVE.
 4. THE PRIVATE ENGINEER SHALL FURNISH THE HOUSE LATERAL DEPTH AT THE PROPERTY LINE BELOW THE TOP OF CURB ELEVATION FOR EACH HOUSE LATERAL ON THE GRADE SHEET.
 5. NO REVISIONS SHALL BE MADE IN THESE PLANS WITHOUT THE APPROVAL OF THE COUNTY ENGINEER.
 6. USE STANDARD MANHOLE FRAMES AND COVERS, S-6-117.
 7. USE EXTRA STRENGTH PIPE. ALL PIPE IS STANDARD DEPTH, EXCEPT AS NOTED.
 8. USE CEMENT MORTAR OR "WEDGE-LOCK" OR "SPREAD-SEAL" FOR ALL V.C.P. JOINTS PER SPEC., SECS. 34 & 44.
 9. RESURFACE ALL TRENCH WITHIN PAVED AREA TO MEET L.A. COUNTY ROAD DEPT. OR CALIF. STATE HIGHWAY REQUIREMENTS IN ACCORDANCE WITH PERMITS.
 10. ENCASE FOUR FEET OF SEWER AT POINTS OF INTERFERENCE WITH POLES, CASE III, S-6-172.
 11. HOUSE LATERALS TO BE CONSTRUCTED WITH INVERTS AT PROPERTY LINE 6 FEET BELOW GRADE OF E. OF STREET.
 12. ALL STRUCTURES SHALL BE BRICK SEWER STRUCTURES, S-6-104.
 13. FOR ALLOWABLE LEAKAGE TEST USE FORMULA NO. 1, SPEC. SEC. 34.
 14. MANHOLE TOPS IN UNIMPROVED RIGHTS-OF-WAY TO BE SIX INCHES ABOVE FINISHED GRADE.
 15. THE CONTRACTOR SHALL NOTIFY THE CONSTRUCTION & STORM DRAIN DIVISION BY TELEPHONE, MADISON 3-477, 24 HOURS AT LEAST TWENTY-FOUR HOURS BEFORE STARTING ANY WORK UNDER THIS CONTRACT.
 16. STANDARD SPECIFICATIONS DATED OCTOBER 25, 1961 APPLY IN THE CONSTRUCTION OF THIS PROJECT.

NO CONNECTIONS FOR THE DISPOSAL OF INDUSTRIAL WASTES SHALL BE MADE TO SEWERS SHOWN ON THESE DRAWINGS WITHOUT WRITTEN PERMISSION FROM THE CHIEF ENGINEER AND GENERAL MANAGER OF THE COUNTY SANITATION DISTRICTS.

NOTE:
 GRADES TO WHICH THIS IMPROVEMENT IS TO BE CONSTRUCTED ARE SHOWN ON PLANS AND PROFILES. GRADE POINTS FOR TOP OF CURBS, CENTER LINE OF STREETS, OR CENTER LINE OF ALLEYS ARE SHOWN BY CIRCLES ON PROFILES. AT ALL POINTS BETWEEN DESIGNATED POINTS THE GRADE SHALL BE ESTABLISHED SO AS TO CONFORM TO A STRAIGHT LINE DRAWN BETWEEN SAID DESIGNATED POINTS.
 ELEVATIONS ARE IN FEET ABOVE U.S.C. & G.S. SEA LEVEL DATUM OF 1929.
 THIS DRAWING AND THE DATA HEREON ARE HEREBY MADE A PART OF THE SPECIFICATIONS.
 WORK SHALL BE CONSTRUCTED ACCORDING TO SPECIFICATIONS ON FILE IN THE OFFICE OF THE COUNTY ENGINEER AND SHALL BE PROSECUTED ONLY IN THE PRESENCE OF THE COUNTY ENGINEER.
 BEFORE WORK CAN BE STARTED, THE CONTRACTOR MUST OBTAIN A PERMIT TO EXCAVATE IN COUNTY STREETS FROM THE L.A. COUNTY ROAD DEPT., DISTRICT OFFICE NO. 46, AND FROM A PERMIT TO THE COUNTY ENGINEER, ROOM 340 COUNTY ENGINEER BUILDING, 108 W. SECOND ST. SUFFICIENT TO COVER THE COST OF CONSTRUCTION INSPECTION AND RECORD PLANS.
 APPROVAL OF THIS PLAN BY THE COUNTY OF LOS ANGELES DOES NOT CONSTITUTE A REPRESENTATION AS TO THE ACCURACY OF THE LOCATION OF OR THE EXISTENCE OR NON-EXISTENCE OF ANY UNDERGROUND UTILITY PIPE, OR STRUCTURE WITHIN THE LIMITS OF THIS PROJECT. THIS NOTE APPLIES TO ALL PAGES.
 IF WORK IS TO BE DONE IN A STATE HIGHWAY, A PERMIT MUST BE OBTAINED FROM THE STATE OF CALIFORNIA, DIVISION OF HIGHWAYS, 120 SOUTH SPRING STREET.

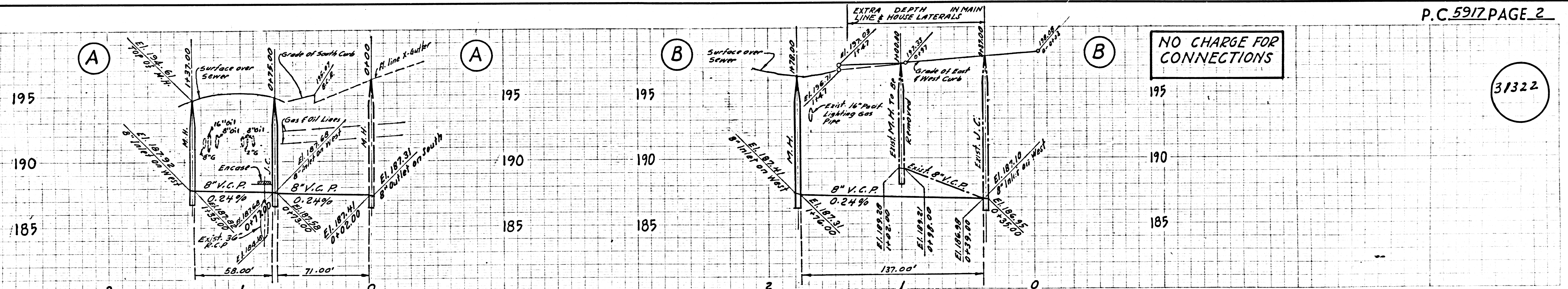
COUNTY OF LOS ANGELES, CALIFORNIA

APPROVED, JOHN A. LAMBIE, COUNTY ENGINEER APPROVED, G.R. COMPTON, CHIEF ENGINEER
 APPROVED, JOHN A. LAMBIE, CITY ENGINEER CITY OF LA MIRADA DIST. NO. 18
 BY: *Richard E. Kahan* ASST. SANITATION ENGINEER BY: *A. J. Coakley* OFFICE ENGINEER
 CHECKED BY: *St. Oude* 11-17-61
 OFFICE OF COUNTY ENGINEER, REG. C. E. NO. 9406

NO CHARGE FOR CONNECTIONS
Richland 11-16-61

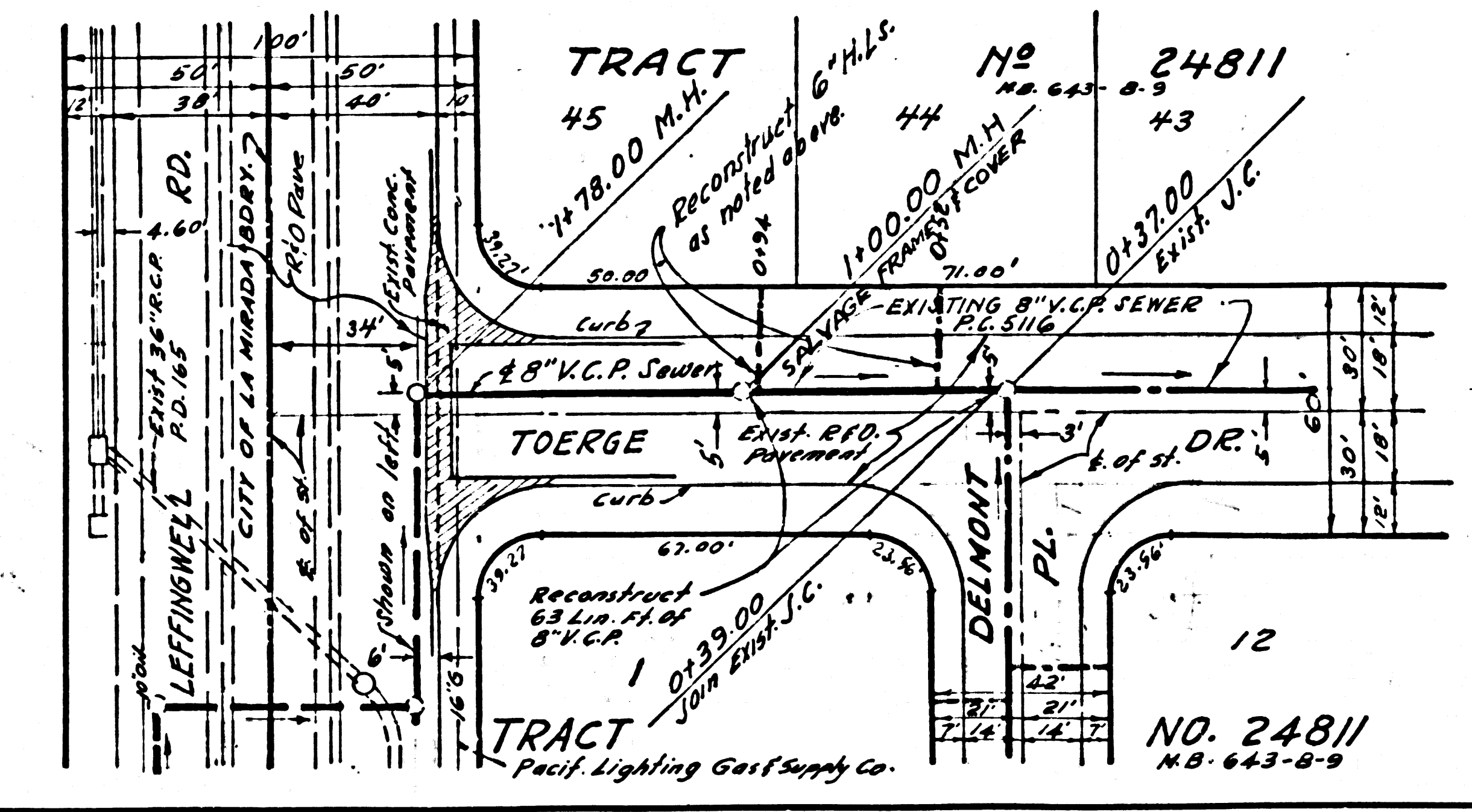
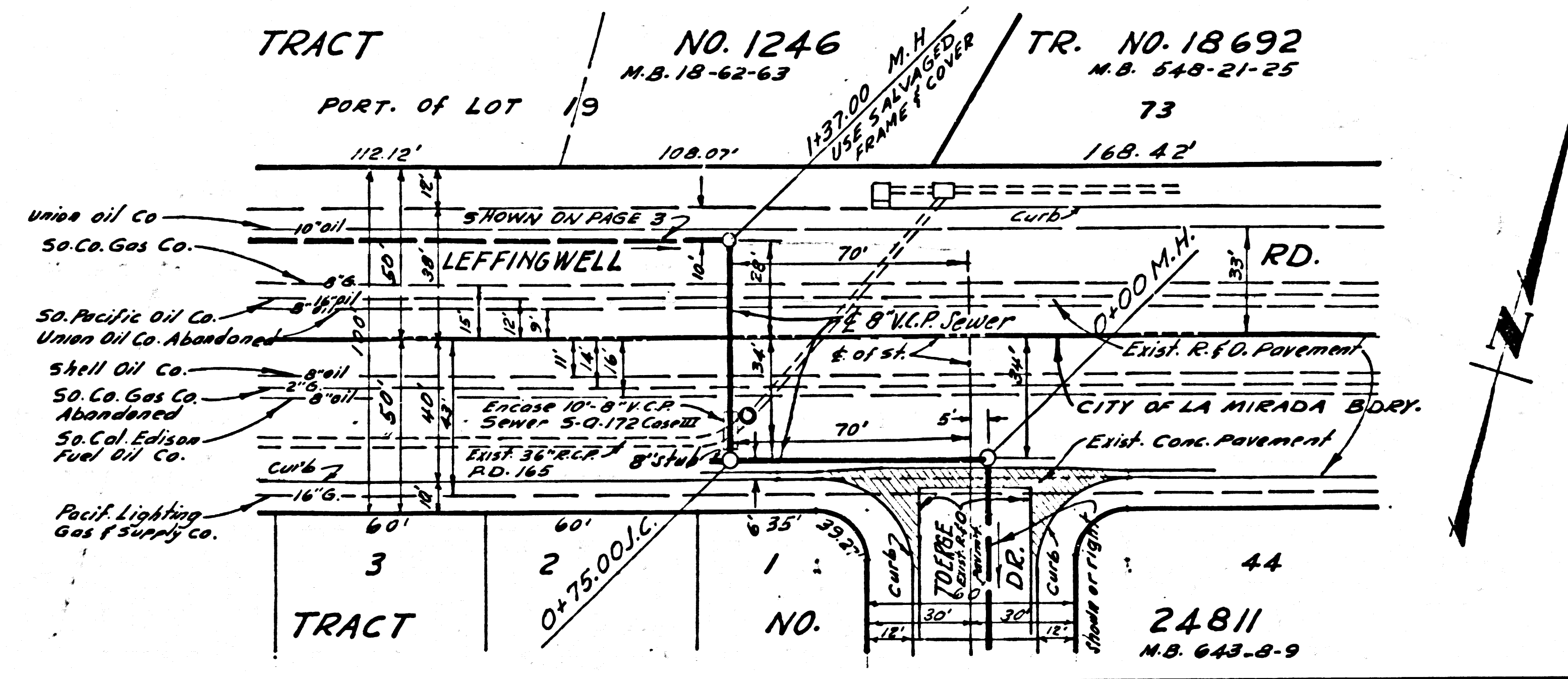
APPROVED BY: *Robert A. Moore* 11-16-61
 INDUSTRIAL WASTE DIVISION

SUBMITTED BY: *Robert R. Flores* 11-16-61
 124 CREDITED REGIONAL OFFICE, REG. C.E. 3871



NO CHARGE FOR CONNECTIONS

31322



EXISTING SERVICE TO BE MAINTAINED DURING CONSTRUCTION

NO CHARGE FOR CONNECTIONS

31323

