

LANCASTER BLDG. DIST. NO. 8.

PROFILE ALIGNMENT AND GRADE OF **P.C. 5921**  
**SANITARY SEWERS PAGE 1**  
 TO BE CONSTRUCTED IN U.N. 0356.15

ALLEY NORTH OF LANCASTER BOULEVARD

PRIVATE CONTRACT NO. 5921

W.S. 70  
 1 SHEET ; 2 PAGES  
 SCALE: VERT. 1"=4' JUNE 1961  
 HORIZ. 1"=40'  
 PREPARED IN THE OFFICES OF  
**SCOTT, BLAKE & WYNNE**  
 BY: *Raymond W. Wynne*  
 REG. C. E. NO. 9438

31246

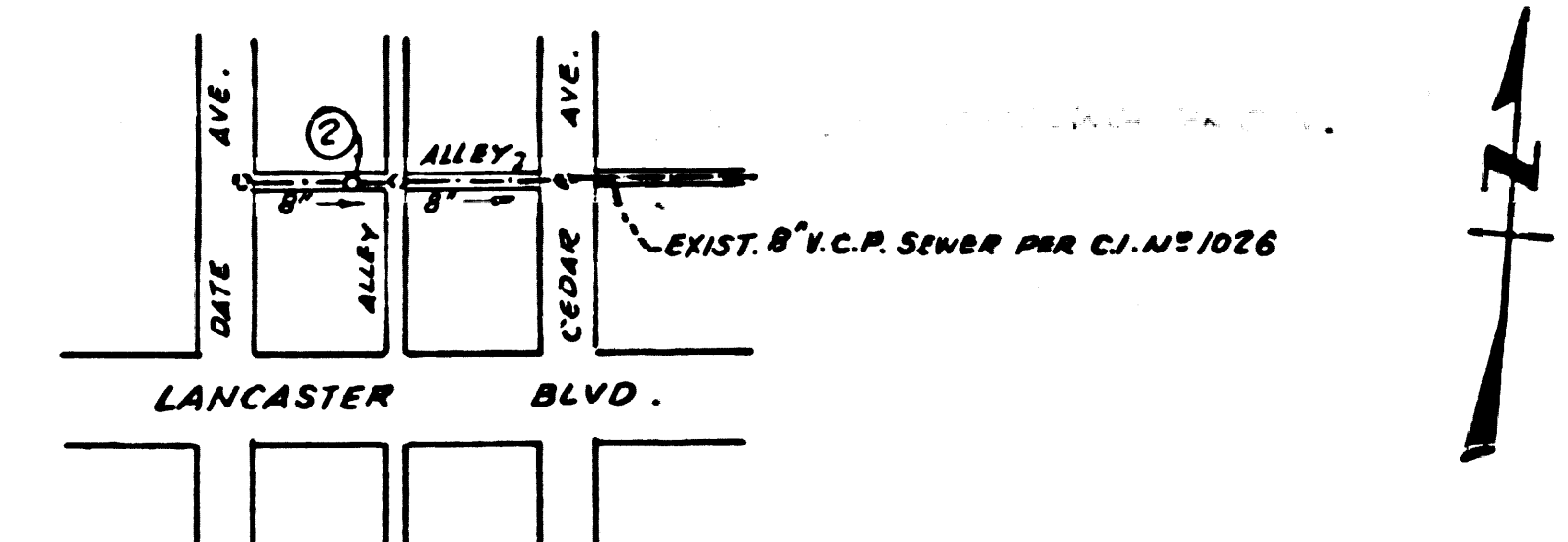
FOR LEGEND SEE PLAN NO. S-A-64

B.M. 101-131 (2356-1914-35) 1959 ADJ. ELEV. 2354.032, C.S.F.B. 2410-40 AT LANCASTER 0.1 MI. W. ALONG LANCASTER BLVD. FROM THE SO. P.W.C. CO. R.R. STA., AT WEB'S SHOE STORE (FORMERLY A BANK BLDG.) IN THE TOP OF THE CONC. SIDEWALK, 168.8 FT. W. OF THE W. CURB OF U.S. HWY 6, 19.6 FT. SO. OF THE SO. CURB OF THE BOULEVARD, 10 1/2 FT. E. OF C/L OF AN ALLEY, 0.6 FT. N.-W. OF THE N.-W. COR. OF THE BLDG., AND ABOUT LEVEL WITH THE BOULEVARD.

- NOTES:
1. PROVIDE STAKES ON THE PROPERTY LINE OR PROPERTY LINES PRODUCED AT RIGHT ANGLES TO THE SEWER LINE AT THE CENTER LINE OF EACH MANHOLE.
  2. NO REPRESENTATIVE OF THE COUNTY ENGINEER WILL SURVEY OR LAY OUT ANY PORTION OF THE WORK.
  3. THE OWNER OR HIS AUTHORIZED REPRESENTATIVE SHALL FURNISH THE COUNTY ENGINEER WITH GRADE SHEETS AND STATIONING FOR ALL HOUSE LATERALS AND Y BRANCHES AND SHALL PROVIDE STAKES FOR THEM AT THEIR PROPER LOCATIONS WITH STATIONING PLAINLY MARKED. ANY CHANGE IN LOCATION SHALL BE REQUESTED IN WRITING BY THE OWNER OR HIS REPRESENTATIVE.
  4. THE PRIVATE ENGINEER SHALL FURNISH THE HOUSE LATERAL DEPTH AT THE PROPERTY LINE BELOW THE TOP OF CURB ELEVATION FOR EACH HOUSE LATERAL ON THE GRADE SHEET.
  5. NO REVISIONS SHALL BE MADE IN THESE PLANS WITHOUT THE APPROVAL OF THE COUNTY ENGINEER.
  6. USE STANDARD MANHOLE FRAMES AND COVERS, S-117.
  7. USE STANDARD STRENGTH PIPE EXCEPT AS NOTED.
  8. USE "WEDGE-LOCK" OR "SPEED-SEAL" FOR ALL V.C.P. JOINTS PER SPECS. SECS. 34 & 48.
  9. RESURFACE ALL TRENCH WITHIN PAVED AREA TO MEET L.A. COUNTY ROAD DEPT. OR CALIF. STATE HIGHWAY REQUIREMENTS IN ACCORDANCE WITH PERMITS.
  10. ENCASE FOUR FEET OF SEWER AT POINTS OF INTERFERENCE WITH POLES, CASE III, S-172.
  11. HOUSE LATERALS TO BE CONSTRUCTED WITH INVERTS AT PROPERTY LINE FEET BELOW CURB GRADE EXCEPT AS NOTED.
  12. ALL STRUCTURES SHALL BE BRICK SEWER STRUCTURES, S-104.
  13. FOR ALLOWABLE LEAKAGE TEST USE FORMULA NO. 1, SPECS. SEC. 54.

14. THE CONTRACTOR SHALL NOTIFY THE CONSTRUCTION DIVISION BY TELEPHONE, MADISON 9-4747, 24 HRS. AT LEAST TWENTY-FOUR HOURS BEFORE STARTING ANY WORK UNDER THIS CONTRACT. SPECS. DATED OCT. 10, 1960 SHALL APPLY IN THE CONSTRUCTION OF THIS PROJECT.

NO CHARGE FOR CONNECTIONS  
*Wynne, R. 7-21-61*



NO CONNECTIONS FOR THE DISPOSAL OF INDUSTRIAL WASTES SHALL BE MADE TO SEWERS SHOWN ON THESE DRAWINGS WITHOUT WRITTEN PERMISSION FROM THE CHIEF ENGINEER AND GENERAL MANAGER OF THE COUNTY SANITATION DISTRICTS.

NOTE: GRADES TO WHICH THIS IMPROVEMENT IS TO BE CONSTRUCTED ARE SHOWN ON PLANS AND PROFILES. GRADE POINTS FOR TOP OF CURBS, CENTER LINE OF STREETS, OR CENTER LINE OF ALLEYS ARE SHOWN BY CIRCLES ON PROFILES. AT ALL POINTS BETWEEN DESIGNATED POINTS THE GRADE SHALL BE ESTABLISHED SO AS TO CONFORM TO A STRAIGHT LINE DRAWN BETWEEN SAID DESIGNATED POINTS. ELEVATIONS ARE IN FEET ABOVE U.S.C. & G.S. SEA LEVEL DATUM OF 1929. THIS DRAWING AND THE DATA HEREON ARE HEREBY MADE A PART OF THE SPECIFICATIONS. WORK SHALL BE CONSTRUCTED ACCORDING TO SPECIFICATIONS ON FILE IN THE OFFICE OF THE COUNTY ENGINEER AND SHALL BE PROSECUTED ONLY IN THE PRESENCE OF THE COUNTY ENGINEER. BEFORE WORK CAN BE STARTED, THE CONTRACTOR MUST OBTAIN A PERMIT TO EXCAVATE IN COUNTY STREETS FROM THE L.A. COUNTY ROAD DIST. DISTRICT OFFICE NO. \_\_\_\_\_ AND PAY A FEE TO ROOM 310, 108 W. 2ND STREET SUFFICIENT TO COVER THE COST OF CONSTRUCTION INSPECTION AND RECORD PLANS. APPROVAL OF THIS PLAN BY THE COUNTY OF LOS ANGELES DOES NOT CONSTITUTE A REPRESENTATION AS TO THE ACCURACY OF THE LOCATION OF OR THE EXISTENCE OR NON-EXISTENCE OF ANY UNDERGROUND UTILITY PIPE, OR STRUCTURE WITHIN THE LIMITS OF THIS PROJECT. THIS NOTE APPLIES TO ALL PAGES. IF WORK IS TO BE DONE IN A STATE HIGHWAY, A PERMIT MUST BE OBTAINED FROM THE STATE OF CALIFORNIA, DIVISION OF HIGHWAYS, 128 SOUTH MAIN STREET.

COUNTY OF LOS ANGELES, CALIFORNIA  
 APPROVED, JOHN A. LAMBE, COUNTY ENGINEER APPROVED, C.R. COMPTON, CHIEF ENGINEER  
 CO. SAN. DIST. NO. 14  
 BY: *W. E. Bennett* BY: *E. P. Bennett*  
 ASSIST. SANITATION ENGINEER IN CHARGE  
 CHECKED BY: *S.K. Onda* 4-25-61  
 OFFICE OF COUNTY ENGINEER, REG. C. E. NO. 2406  
 RECOMMENDED: *Richard E. Allen*  
 ANTELOPE VALLEY REGIONAL ENGINEER

P.C. 5921 PAGE 2  
 NO CHARGE FOR CONNECTIONS

31247

