

PUENTE BLDG. DIST. NO. 2

PROFILE ALIGNMENT AND GRADE OF P.C. 5926
 SANITARY SEWERS PAGE 1
 TO BE CONSTRUCTED IN J.N. 0357.69

TRACT NO. 26611

PRIVATE CONTRACT NO. 5926

W.S. 37

3 SHEETS; 6 PAGES

SCALE: VERT. 1"=4' HORIZ. 1"=40' JANUARY, 1962
 PREPARED IN THE OFFICES OF

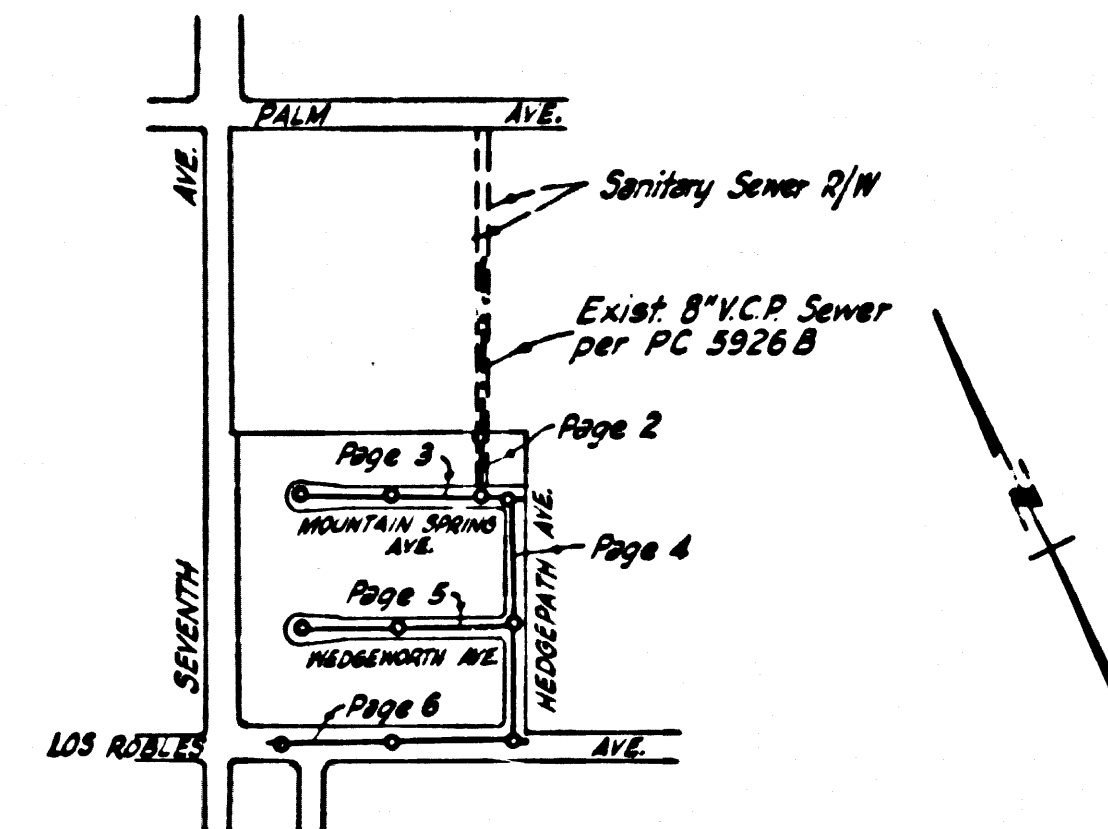
WALSH-FORKERT CIVIL ENGINEERS, INC.

REG. C. E. NO. 6371

FOR LEGEND SEE PLAN NO. S-A-64

31907

Bench Mark Elevation 400.086'
 S.G. 1592 L. & T. near N.W. corner of conc.
 drive to house No. 14606 Palm Ave., at S.E. corner
 of Seventh Ave. 100' E. & 27' 310' E. intersection.
 Whittier Quad 1955



INDEX MAP
 scale: 1"=600'

TRACT NO. 26611
 P.C. NO. 5926

NOTES:

1. PROVIDE STAKES ON THE PROPERTY LINE OR PROPERTY LINES PRODUCED AT RIGHT ANGLES TO THE SEWER LINE AT THE CENTER LINE OF EACH MANHOLE.
2. NO REPRESENTATIVE OF THE COUNTY ENGINEER WILL SURVEY OR LAY OUT ANY PORTION OF THE WORK.
3. THE OWNER OR HIS AUTHORIZED REPRESENTATIVE SHALL FURNISH THE COUNTY ENGINEER WITH GRADE SHEETS AND STATIONING FOR ALL HOUSE LATERALS AND Y BRANCHES AND SHALL PROVIDE STAKES FOR THEM AT THEIR PROPER LOCATIONS WITH STATIONING PLAINLY MARKED. ANY CHANGE IN LOCATION SHALL BE REQUESTED IN WRITING BY THE OWNER OR HIS REPRESENTATIVE.
4. THE PRIVATE ENGINEER SHALL FURNISH THE HOUSE LATERAL DEPTH AT THE PROPERTY LINE BELOW THE TOP OF CURB ELEVATION FOR EACH HOUSE LATERAL ON THE GRADE SHEET.
5. NO REVISIONS SHALL BE MADE IN THESE PLANS WITHOUT THE APPROVAL OF THE COUNTY ENGINEER.
6. USE STANDARD MANHOLE FRAMES AND COVERS, S-117, EXCEPT AS NOTED.
7. USE EXTRA STRENGTH PIPE, ALL PIPE STANDARD DEPTH EXCEPT AS NOTED.
8. USE CEMENT MORTAR OR "WEDGE-LOCK" OR "SPEED-SEAL" FOR ALL V.C.P. JOINTS PER SPECS., SECS. 16 & 48.
9. RESURFACE ALL TRENCH WITHIN PAVED AREA TO MEET L.A. COUNTY ROAD DEPT. OR CALIF. STATE HIGHWAY REQUIREMENTS IN ACCORDANCE WITH PERMITS.
10. ENCASE FOUR FEET OF SEWER AT POINTS OF INTERFERENCE WITH POLES, CASE III, S-117.
11. HOUSE LATERALS TO BE CONSTRUCTED WITH INVERTS AT PROPERTY LINE, 6 FEET BELOW CURB GRADE.
12. MANHOLES SHALL BE BRICK SEWER STRUCTURES PER S-0-10 & PRECAST CONCRETE MANHOLES PER S-0-135 OR S-0-173 MAY BE USED AS AN ALTERNATE IN LOCATIONS APPROVED BY THE COUNTY ENGINEER.
13. FOR ALLOWABLE LEAKAGE TEST USE FORMULA NO. 1, SPECS., SEC. 54.
14. MANHOLE TOPS IN UNIMPROVED RIGHTS-OF-WAY TO BE SIX INCHES ABOVE FINISHED GRADE.
15. THE CONTRACTOR SHALL NOTIFY THE CONSTRUCTION DIVISION BY TELEPHONE, MADISON 5-4743, EXT. 8311 AT LEAST TWENTY-FOUR HOURS BEFORE STARTING ANY WORK UNDER THIS CONTRACT.
16. STANDARD SPECIFICATIONS DATED OCTOBER 25, 1961 APPLY IN THE CONSTRUCTION OF THIS PROJECT.

COLLECT CHARGE
 AS INDICATED
 P.P. Smith 4-11-62

NO CONNECTIONS FOR THE DISPOSAL OF INDUSTRIAL WASTES SHALL BE MADE TO SEWERS SHOWN ON THESE DRAWINGS WITHOUT WRITTEN PERMISSION FROM THE CHIEF ENGINEER AND GENERAL MANAGER OF THE COUNTY SANITATION DISTRICTS.

NOTE:
 GRADES TO WHICH THIS IMPROVEMENT IS TO BE CONSTRUCTED ARE SHOWN ON PLANS AND PROFILE GRADE POINTS FOR TOP OF CURBS, CENTER LINE OF STREETS, OR CENTER LINE OF ALLEYS ARE SHOWN BY CIRCLES ON PROFILES. AT ALL POINTS BETWEEN DESIGNATED POINTS THE GRADE SHALL BE ESTABLISHED SO AS TO CONFORM TO A STRAIGHT LINE DRAWN BETWEEN SAID DESIGNATED POINTS.
 ELEVATIONS ARE IN FEET ABOVE U.S.C. & G.S. SEA LEVEL DATUM OF 1929.
 THIS DRAWING AND THE DATA HEREON ARE HEREBY MADE A PART OF THE SPECIFICATIONS.
 WORK SHALL BE CONSTRUCTED ACCORDING TO SPECIFICATIONS ON FILE IN THE OFFICE OF THE COUNTY ENGINEER AND SHALL BE PROSECUTED ONLY IN THE PRESENCE OF THE COUNTY ENGINEER.
 BEFORE WORK CAN BE STARTED THE CONTRACTOR MUST OBTAIN A PERMIT TO EXCAVATE IN COUNTY STREETS FROM THE L.A. COUNTY ROAD DEPT., DISTRICT OFFICE NO. 7, AND MAKE A DEPOSIT WITH THE COUNTY ENGINEER ROOM 310 (3) ENGINEERS BLDG., 400 N. 2ND STREET, L.A. 12 SUFFICIENT TO COVER THE COST OF CONSTRUCTION INSPECTION AND RECORD PLANS.
 APPROVAL OF THIS PLAN BY THE COUNTY OF LOS ANGELES DOES NOT CONSTITUTE A REPRESENTATION AS TO THE ACCURACY OF THE LOCATION OR OF THE EXISTENCE OR NON-EXISTENCE OF ANY UNDERGROUND UTILITY PIPE, OR STRUCTURE WITHIN THE LIMITS OF THIS PROJECT. THIS NOTE APPLIES TO ALL PAGES.
 IF WORK IS TO BE DONE IN A STATE HIGHWAY, A PERMIT MUST BE OBTAINED FROM THE STATE OF CALIFORNIA, DIVISION OF HIGHWAYS, 120 SOUTH SPRING STREET.

COUNTY OF LOS ANGELES, CALIFORNIA

APPROVED, JOHN A. LA. 481E, COUNTY ENGINEER APPROVED, J.D. PARKHURST, CHIEF ENGINEER

CO. SAN. DIST. NO. 12

CHECKED BY: J.K. D... 4-13-62

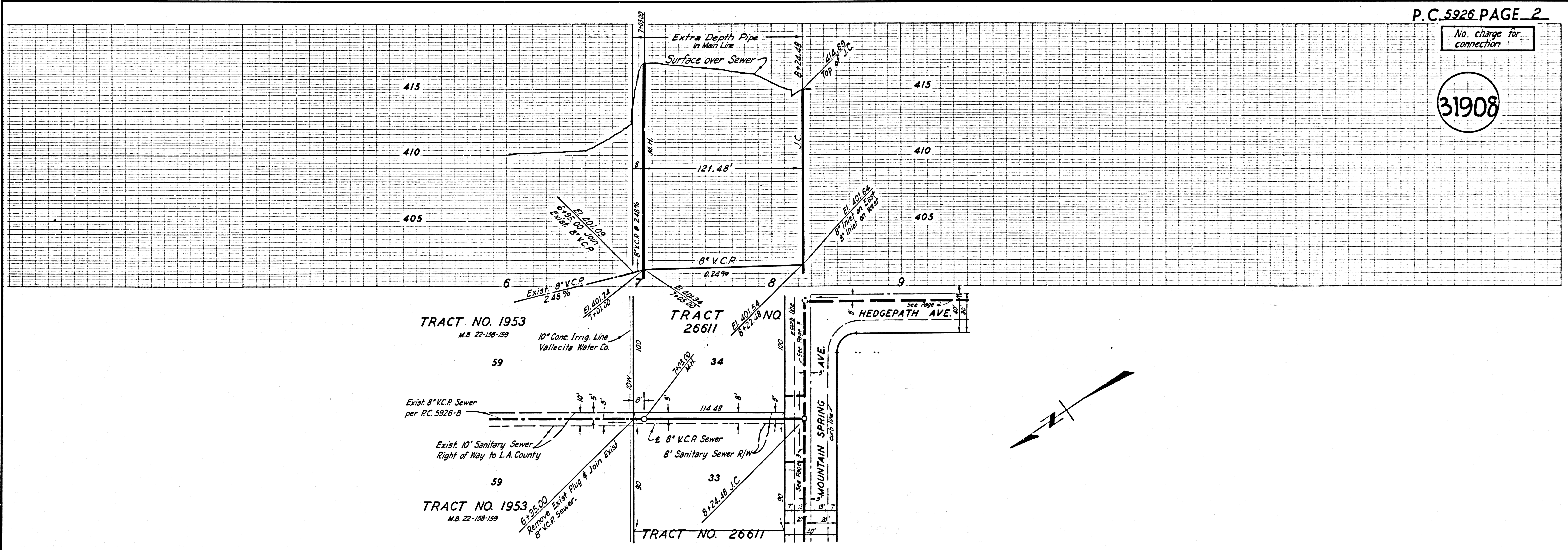
OFFICE OF COUNTY ENGINEER, REG. C. E. NO. 7406

SUBMITTED J.K.C. Reinhardt 4-11-62
 SAN DIMAS REGIONAL OFFICE

P.C. 5926 PAGE 2

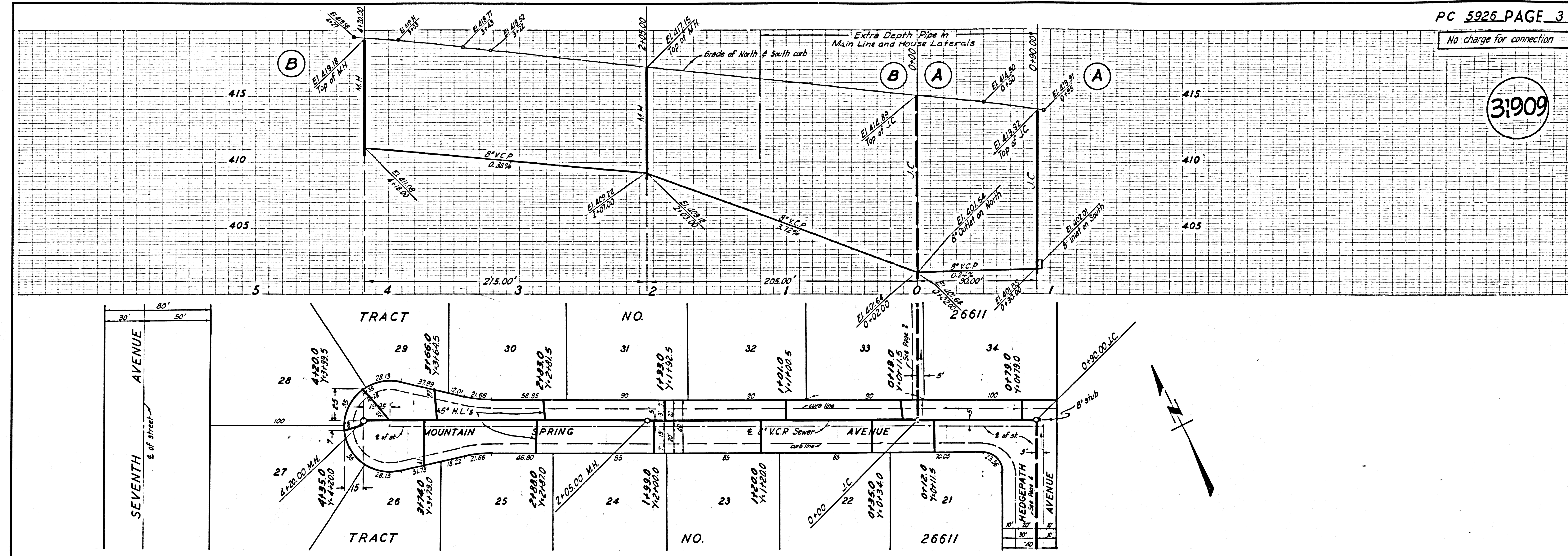
No charge for connection

31908



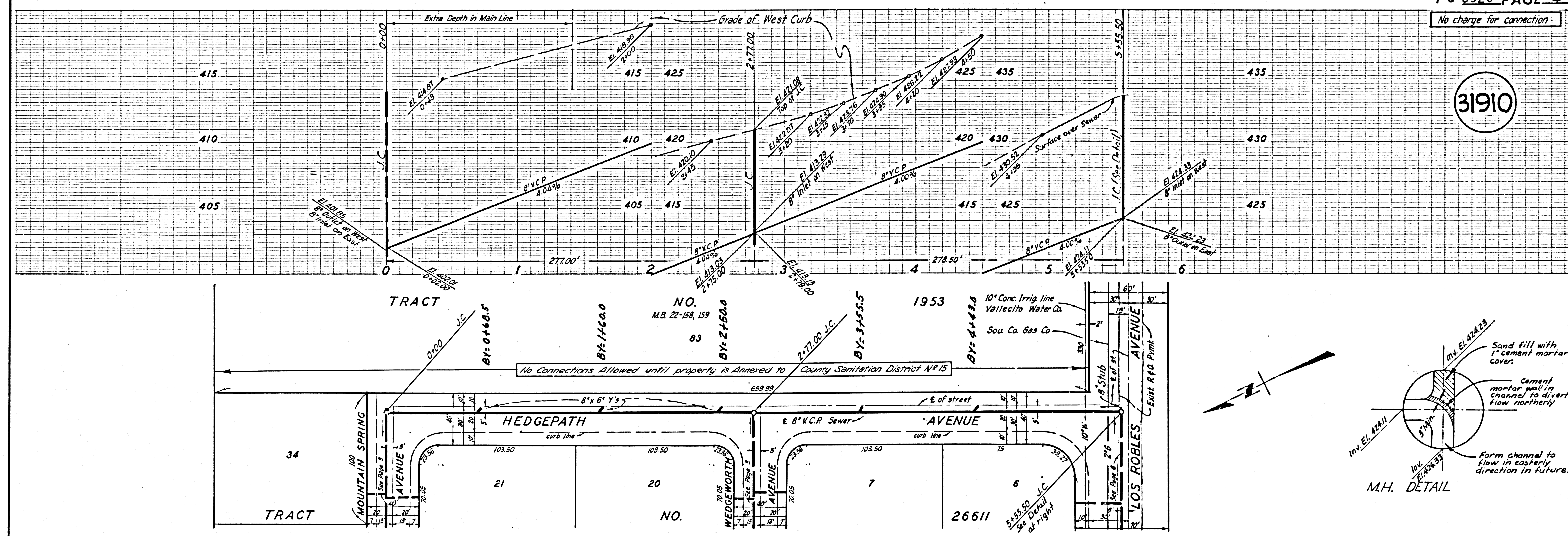
No charge for connection

31909



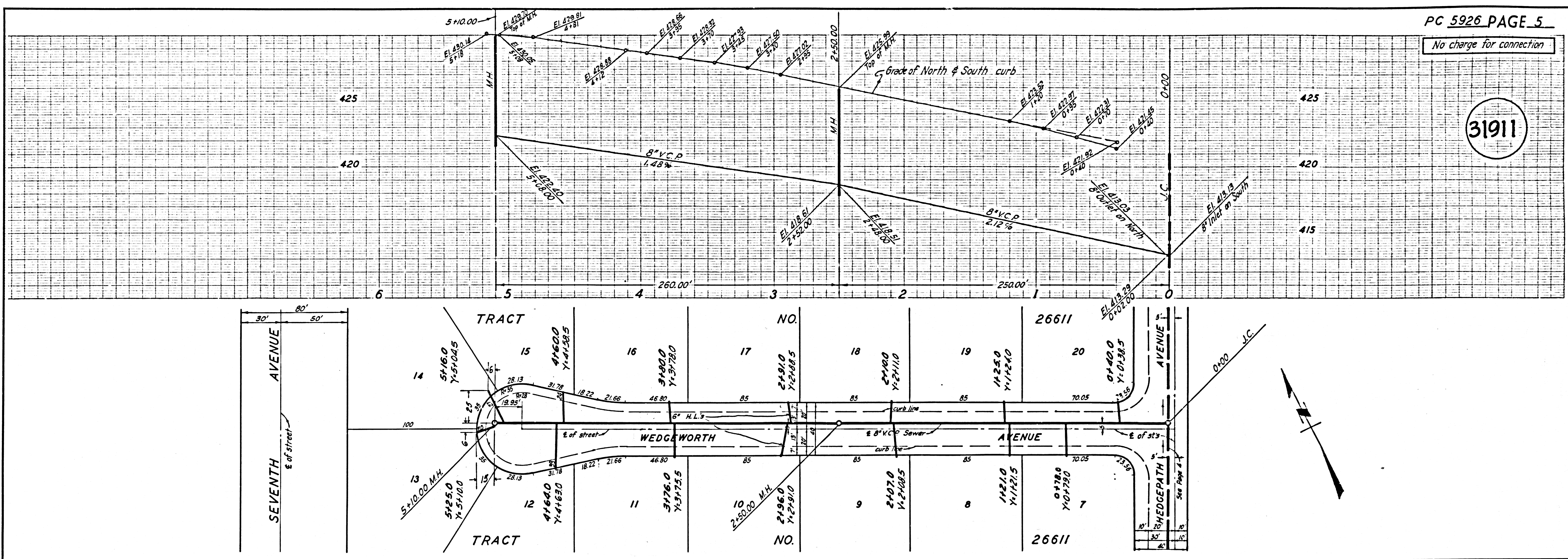
No charge for connection

31910



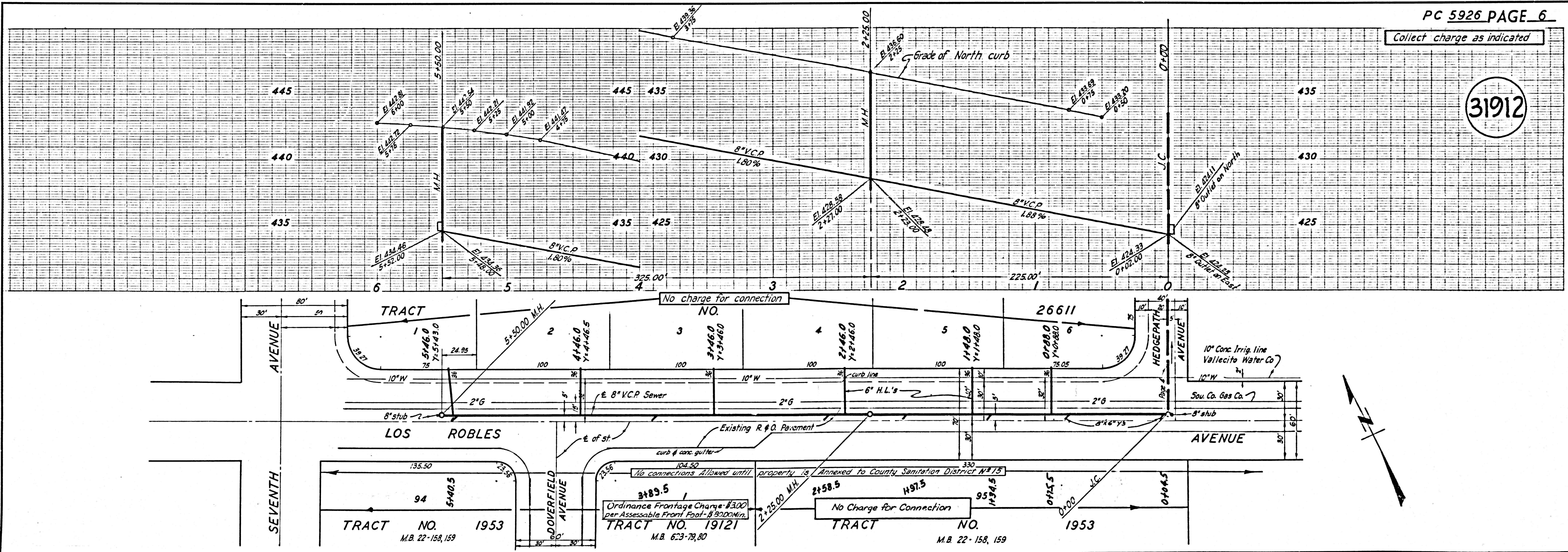
No charge for connection

31911



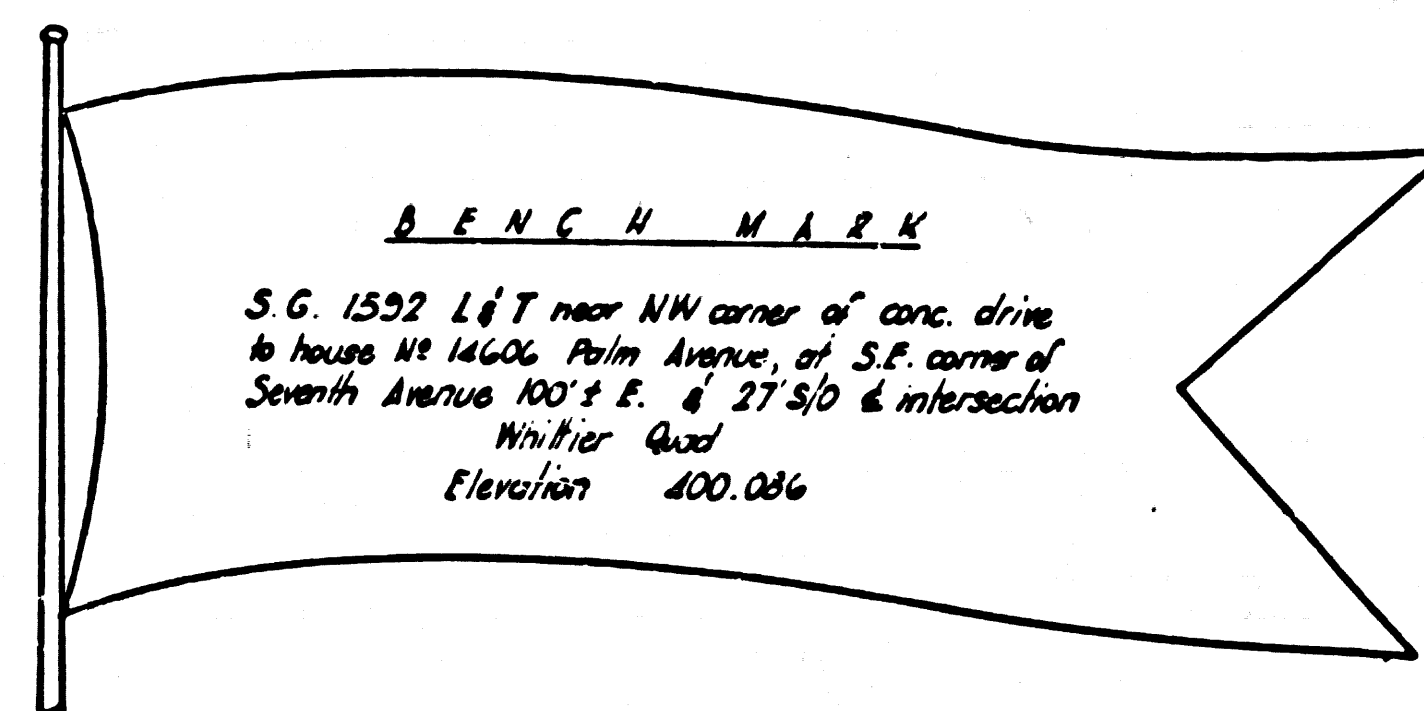
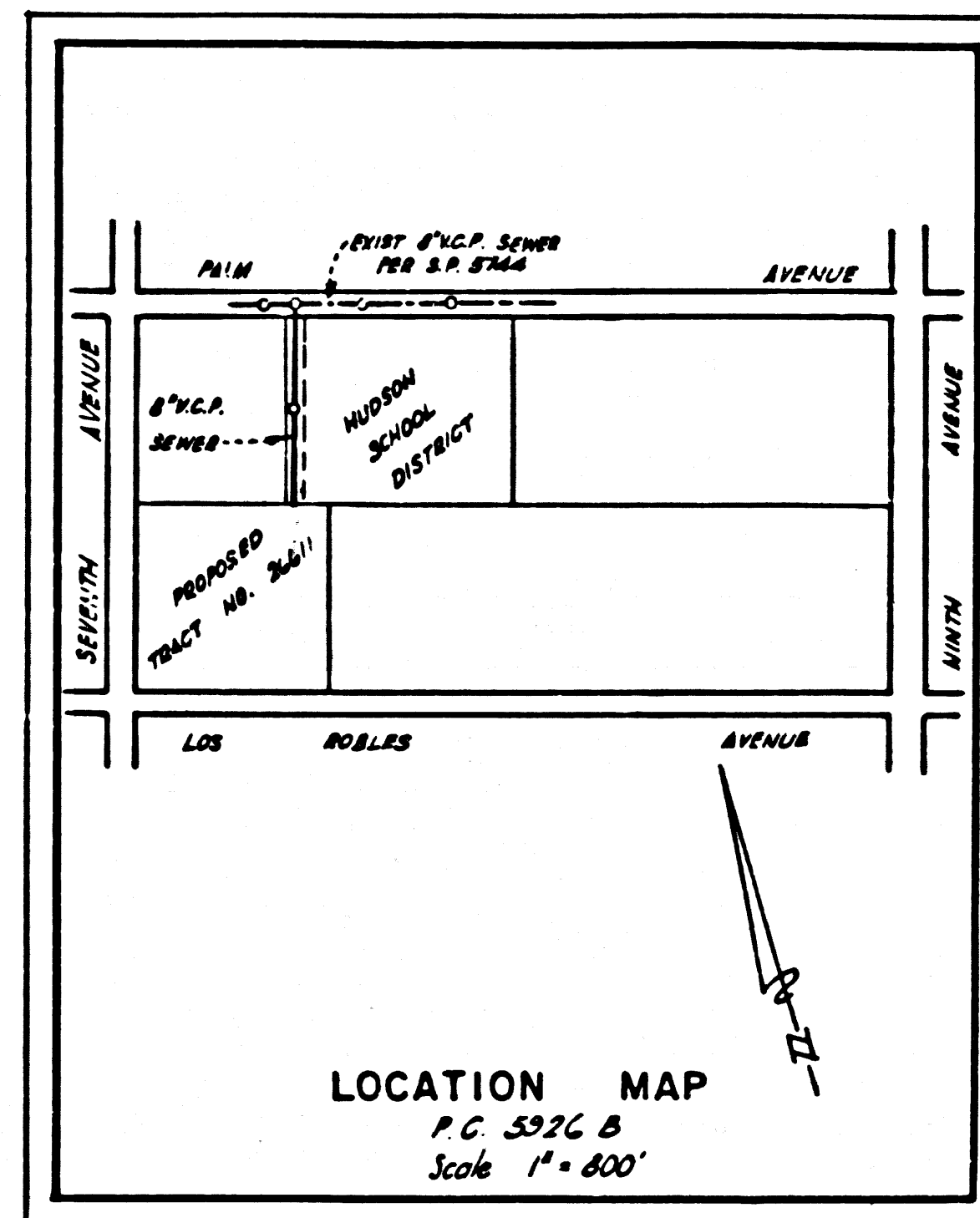
Collect charge as indicated

31912



PUENTE BLDG. DIST. NO. 2

PROFILE ALIGNMENT AND GRADE OF P.C. 5926-B
 SANITARY SEWERS PAGE 1
 TO BE CONSTRUCTED IN
 RIGHT OF WAY for
 TRACT NO. 26611



DOUBLE SCALE
 VERTICAL

- NOTES:
1. PROVIDE STAKES ON THE PROPERTY LINE OR PROPERTY LINES PRODUCED AT RIGHT ANGLES TO THE SEWER LINE AT THE CENTER LINE OF EACH MANHOLE.
 2. NO REPRESENTATIVE OF THE COUNTY ENGINEER WILL SURVEY OR LAY OUT ANY PORTION OF THE WORK.
 3. THE OWNER OR HIS AUTHORIZED REPRESENTATIVE SHALL FURNISH THE COUNTY ENGINEER WITH GRADE SHEETS AND STATIONING FOR ALL HOUSE LATERALS AND Y BRANCHES AND SHALL PROVIDE STAKES FOR THEM AT THEIR PROPER LOCATIONS WITH STATIONING PLAINLY MARKED. ANY CHANGE IN LOCATION SHALL BE REQUESTED IN WRITING BY THE OWNER OR HIS REPRESENTATIVE.
 4. NO REVISIONS SHALL BE MADE IN THESE PLANS WITHOUT THE APPROVAL OF THE COUNTY ENGINEER.
 5. USE STANDARD MANHOLE FRAMES AND COVERS, S-117.
 6. USE EXTRA STRENGTH PIPE.
 7. USE CEMENT MORTAR OR "WEDGELOCK" OR "SPEED-SEAL" FOR ALL Y.C.P. JOINTS PER SPEC'S, SECS. 36 & 48.
 8. RESURFACE ALL TRENCH WITHIN PAVED AREA TO MEET L.A. COUNTY ROAD DEPT. OR CALIF. STATE HIGHWAY REQUIREMENTS IN ACCORDANCE WITH PERMITS.
 9. ENCASE FOUR FEET OF SEWER AT POINTS OF INTERFERENCE WITH POLES, CASE III, S-117.
 10. ALL STRUCTURES SHALL BE BRICK SEWER STRUCTURES, S-104, PER SPEC'S, SEC. 54.
 11. FOR ALLOWABLE LEAKAGE TEST USE FORMULA NO. 1, SPEC'S, SEC. 54.
 12. MANHOLE TOPS IN UNIMPROVED RIGHTS-OF-WAY TO BE SIX INCHES ABOVE FINISHED GRADE.
 13. THE CONTRACTOR SHALL NOTIFY THE CONSTRUCTION DIVISION BY TELEPHONE, MADISON 9-4747, ESTABLISH AT LEAST TWENTY-FOUR HOURS BEFORE STARTING ANY WORK UNDER THIS CONTRACT.
 14. IT SHALL BE THE RESPONSIBILITY OF THE CONTRACTOR TO LOCATE ALL UTILITIES OF EVERY NATURE WHETHER SHOWN HEREON OR NOT AND PROTECT THEM FROM DAMAGE. THE CONTRACTOR SHALL BEAR THE TOTAL EXPENSE OF REPAIR OR REPLACEMENT OF SAID UTILITIES DAMAGED BY OPERATIONS IN CONNECTION WITH THE PRODUCTION OF THIS WORK.
 15. STANDARD SPECIFICATIONS DATED OCT. 10, 1960 APPLY IN THE CONSTRUCTION OF THIS PROJECT.

NO CONNECTIONS FOR THE DISPOSAL OF INDUSTRIAL WASTES SHALL BE MADE TO SEWERS SHOWN ON THESE DRAWINGS WITHOUT WRITTEN PERMISSION FROM THE CHIEF ENGINEER AND GENERAL MANAGER OF THE COUNTY SANITATION DISTRICTS.

COLLECT CHARGES AS INDICATED
 D. R. Olson 9/19/61

PRIVATE CONTRACT NO. 5926 - B
 W.S. 37
 1 SHEET OF 2 PAGES
 SCALE: VERT. 1" = 8'
 HORIZ. 1" = 40'
 JULY, 1961
 PREPARED IN THE OFFICES OF
 WALSH-FORKERT CIVIL ENGINEERS, INC.
 REG. C. E. NO. 6427
 FOR LEGEND SEE PLAN NO. S-A-64

NOTE:
 GRADES TO WHICH THIS IMPROVEMENT IS TO BE CONSTRUCTED ARE SHOWN ON PLANS AND PROFILES. GRADE POINTS FOR TOP OF CURBS, CENTER LINE OF STREETS OR CENTER LINE OF ALLEYS ARE SHOWN BY CIRCLES ON PROFILES. AT ALL POINTS BETWEEN DESIGNATED POINTS THE GRADE SHALL BE ESTABLISHED SO AS TO CONFORM TO A STRAIGHT LINE DRAWN BETWEEN SAID DESIGNATED POINTS.
 ELEVATIONS ARE IN FEET ABOVE U.S.C. & G.S. SEA LEVEL DATUM OF 1929.
 THIS DRAWING AND THE DATA HEREON ARE HEREBY MADE A PART OF THE SPECIFICATIONS ON FILE IN THE OFFICE OF THE COUNTY ENGINEER AND SHALL BE PROSECUTED ONLY IN THE PRESENCE OF THE COUNTY ENGINEER.
 BEFORE WORK CAN BE STARTED THE CONTRACTOR MUST OBTAIN A PERMIT TO EXCAVATE IN COUNTY STREETS FROM THE L.A. COUNTY ROAD DEPT., DISTRICT OFFICE NO. 7 AND PAY A FEE TO THE COUNTY ENGINEER ROOM 310 1/2 ENGINEER BLDG. 128 W. 24th STREET, L.A., SUFFICIENT TO COVER THE COST OF CONSTRUCTION INSPECTION AND RECORD PLANS.
 APPROVAL OF THIS PLAN BY THE COUNTY OF LOS ANGELES DOES NOT CONSTITUTE A REPRESENTATION AS TO THE ACCURACY OF THE LOCATION OF OR THE EXISTENCE OR NON-EXISTENCE OF ANY UNDERGROUND UTILITY PIPE, OR STRUCTURE WITHIN THE LIMITS OF THIS PROJECT. THIS NOTE APPLIES TO ALL PAGES.
 IF WORK IS TO BE DONE IN A STATE HIGHWAY, A PERMIT MUST BE OBTAINED FROM THE STATE OF CALIFORNIA, DIVISION OF HIGHWAYS, 120 SOUTH SPRING STREET.

COUNTY OF LOS ANGELES, CALIFORNIA
 APPROVED, JOHN A. LAMBIE, COUNTY ENGINEER
 APPROVED, J.D. PARKHURST, CHIEF ENGINEER
 CO. SAN. DIST. NO. 15
 BY: [Signature] ASST. SANITATION ENGINEER
 BY: [Signature] OFFICE ENGINEER
 CHECKED BY: [Signature] 9-15-61
 OFFICE OF COUNTY ENGINEER, REG. C. E. NO. 9406
 SUBMITTED: [Signature] 9-11-61
 SAN DIMAS REGIONAL OFFICE

P.C. 5926-B PAGE 2

