

PUENTE BLDG. DIST. NO. 2

PROFILE ALIGNMENT AND GRADE OF P.C. 5931  
 SANITARY SEWERS PAGE 1  
 TO BE CONSTRUCTED IN J.N. 0356.23

TRACT NO 26697

PRIVATE CONTRACT NO. 5931

W.S. 37  
 3 SHEETS; 5 PAGES

31311

SCALE: VERT. 1"=4'  
 HORIZ. 1"=40'

MAY 1, 1961  
 PREPARED IN THE OFFICES OF  
**HANS C. THOMSEN**

By: *Hans C. Thomsen*  
 REG. C. E. NO. 8244

FOR LEGEND SEE PLAN NO. S-A-64

NOTE:  
 GRADES TO WHICH THIS IMPROVEMENT IS TO BE CONSTRUCTED ARE SHOWN ON PLANS AND PROFILES. GRADE POINTS FOR TOP OF CURBS, CENTER LINE OF STREETS, OR CENTER LINE OF ALLEYS ARE SHOWN BY CIRCLES ON PROFILES AT ALL POINTS BETWEEN DESIGNATED POINTS THE GRADE SHALL BE ESTABLISHED SO AS TO CONFORM TO A STRAIGHT LINE DRAWN BETWEEN SAID DESIGNATED POINTS.  
 ELEVATIONS ARE IN FEET ABOVE U.S.C. & G.S. SEA LEVEL DATUM OF 1929.  
 THIS DRAWING AND THE DATA HEREON ARE HEREBY MADE A PART OF THE SPECIFICATIONS.  
 WORK SHALL BE CONSTRUCTED ACCORDING TO SPECIFICATIONS ON FILE IN THE OFFICE OF THE COUNTY ENGINEER AND SHALL BE PROSECUTED ONLY IN THE PRESENCE OF THE COUNTY ENGINEER.  
 BEFORE WORK CAN BE STARTED, THE CONTRACTOR MUST OBTAIN A PERMIT TO EXCAVATE IN COUNTY STREETS FROM THE L. A. COUNTY ROAD DEPT. DISTRICT OFFICE NO. 1 AND PAY A FEE TO THE COUNTY ENGINEER ROOM, 210 COUNTY ENGINEER BUILDING, 440 N. 5th ST., SUFFICIENT TO COVER THE COST OF CONSTRUCTION INSPECTION AND RECORD PLANS.  
 APPROVAL OF THIS PLAN BY THE COUNTY OF LOS ANGELES DOES NOT CONSTITUTE A REPRESENTATION AS TO THE ACCURACY OF THE LOCATION OF OR THE EXISTENCE OR NON-EXISTENCE OF ANY UNDERGROUND UTILITY PIPE, OR STRUCTURE WITHIN THE LIMITS OF THIS PROJECT. THIS NOTE APPLIES TO ALL PAGES.  
 IF WORK IS TO BE DONE IN A STATE HIGHWAY, A PERMIT MUST BE OBTAINED FROM THE STATE OF CALIFORNIA, DIVISION OF HIGHWAYS, 126 SOUTH SHAW STREET.

COUNTY OF LOS ANGELES, CALIFORNIA

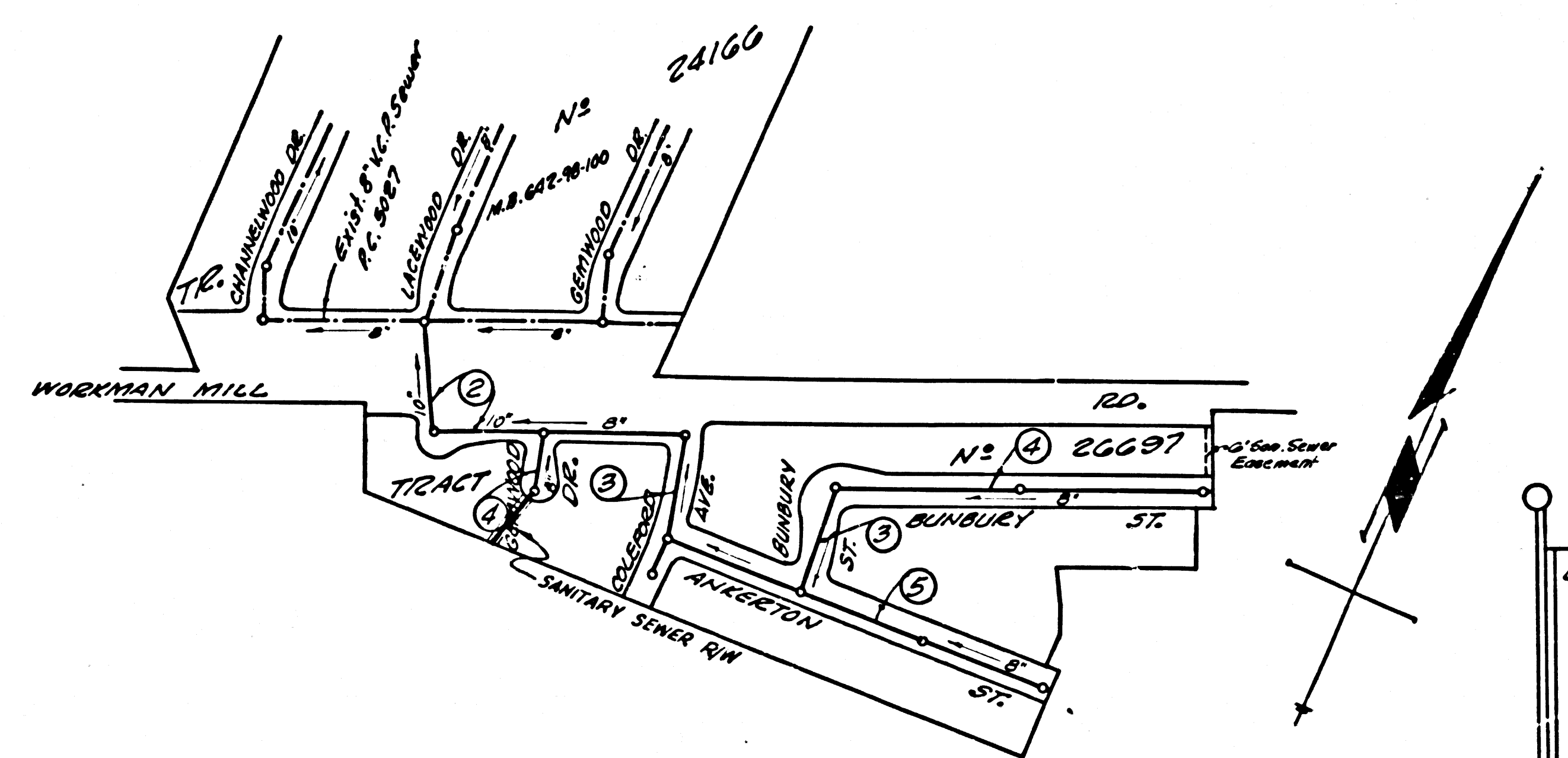
APPROVED, JOHN A. LAMBIE, COUNTY ENGINEER APPROVED, *C.R. Campbell*, CHIEF ENGINEER  
 TO SAN. DIST. NO. 15

By: *L.H. Hughes* SANITATION ENGINEER By: *H.C. Thomsen* OFFICE ENGINEER

CHECKED BY: *W.C. Reid* 9-8-61  
 OFFICE OF COUNTY ENGINEER, REG. C. E. NO. 2406

SUBMITTED BY: *W.C. Reid* 9-8-61  
 SAN DIMAS REGIONAL ENGINEER

- NOTES:
1. PROVIDE STAKES ON THE PROPERTY LINE OR PROPERTY LINES PRODUCED AT RIGHT ANGLES TO THE SEWER LINE AT THE CENTER LINE OF EACH MANHOLE.
  2. NO REPRESENTATIVE OF THE COUNTY ENGINEER WILL SURVEY OR LAY OUT ANY PORTION OF THE WORK.
  3. THE OWNER OR HIS AUTHORIZED REPRESENTATIVE SHALL FURNISH THE COUNTY ENGINEER WITH GRADE SHEETS AND STATIONING FOR ALL HOUSE LATERALS AND Y BRANCHES AND SHALL PROVIDE STAKES FOR THEM AT THEIR PROPER LOCATIONS WITH STATIONING PLAINLY MARKED. ANY CHANGE IN LOCATION SHALL BE REQUESTED IN WRITING BY THE OWNER OR HIS REPRESENTATIVE.
  4. THE PRIVATE ENGINEER SHALL FURNISH THE HOUSE LATERAL DEPTH AT THE PROPERTY LINE BELOW THE TOP OF CURB ELEVATION FOR EACH HOUSE LATERAL ON THE GRADE SHEET.
  5. NO REVISIONS SHALL BE MADE IN THESE PLANS WITHOUT THE APPROVAL OF THE COUNTY ENGINEER.
  6. USE STANDARD MANHOLE FRAMES AND COVERS, S-117, ENCLOSURE AS NOTED.
  7. USE STANDARD STRENGTH PIPE EXCEPT AS NOTED.
  8. USE CEMENT MORTAR OR "WEDGE-LOCK" OR "SPEED-SEAL" FOR ALL V.C.P. JOINTS PER SPEC'S, SECS. 34 & 4.
  9. RESURFACE ALL TRENCH WITHIN PAVED AREA TO MEET L.A. COUNTY ROAD DEPT. OR CALIF. STATE HIGHWAY REQUIREMENTS IN ACCORDANCE WITH PERMITS.
  10. ENCASE FOUR FEET OF SEWER AT POINTS OF INTERFERENCE WITH POLES, CASE III, S-172.
  11. HOUSE LATERALS TO BE CONSTRUCTED WITH INVERTS AT PROPERTY LINE 5 FEET BELOW CURB GRADE EXCEPT AS NOTED.
  12. ALL STRUCTURES SHALL BE BRICK SEWER STRUCTURES, S-104, ENCLOSURE AS NOTED.
  13. FOR ALLOWABLE LEAKAGE TEST USE FORMULA NO. 1 SPEC'S, SEC. 34.
  14. MANHOLE TOPS IN UNIMPROVED RIGHTS-OF-WAY TO BE SIX INCHES ABOVE FINISHED GRADE.
  15. THE CONTRACTOR SHALL NOTIFY THE CONSTRUCTION & STORM-DRAIN DIVISION BY TELEPHONE, MADISON 9-4747, EXT. 81951 AT LEAST TWENTY-FOUR HOURS BEFORE STARTING ANY WORK UNDER THIS CONTRACT.
  16. STANDARD SPECIFICATIONS DATED OCT. 16, 1950 SHALL APPLY IN THE CONSTRUCTION OF THIS PROJECT.



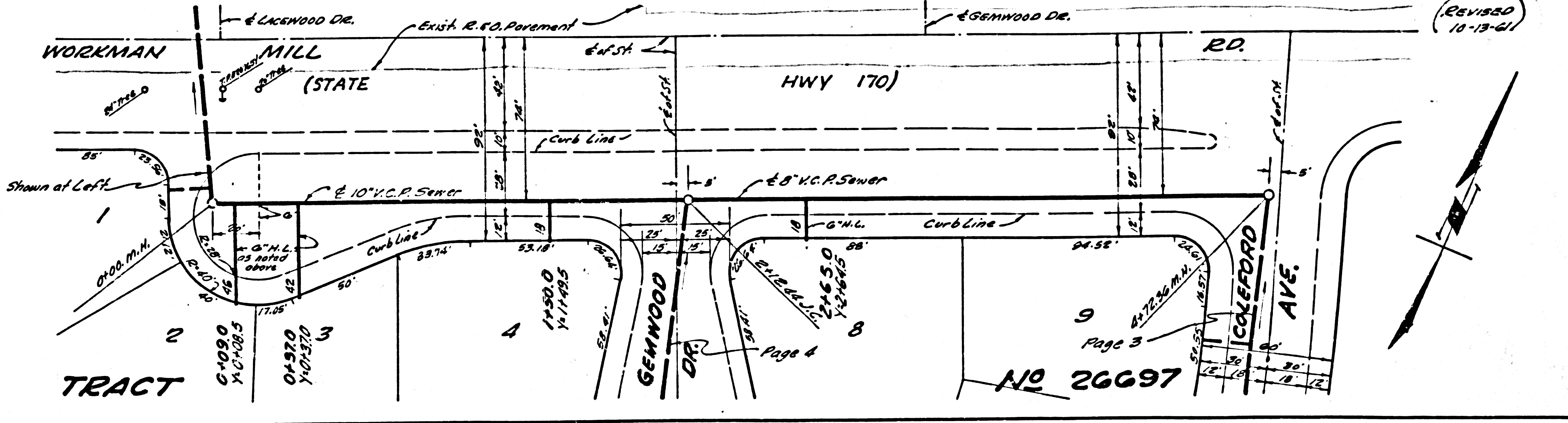
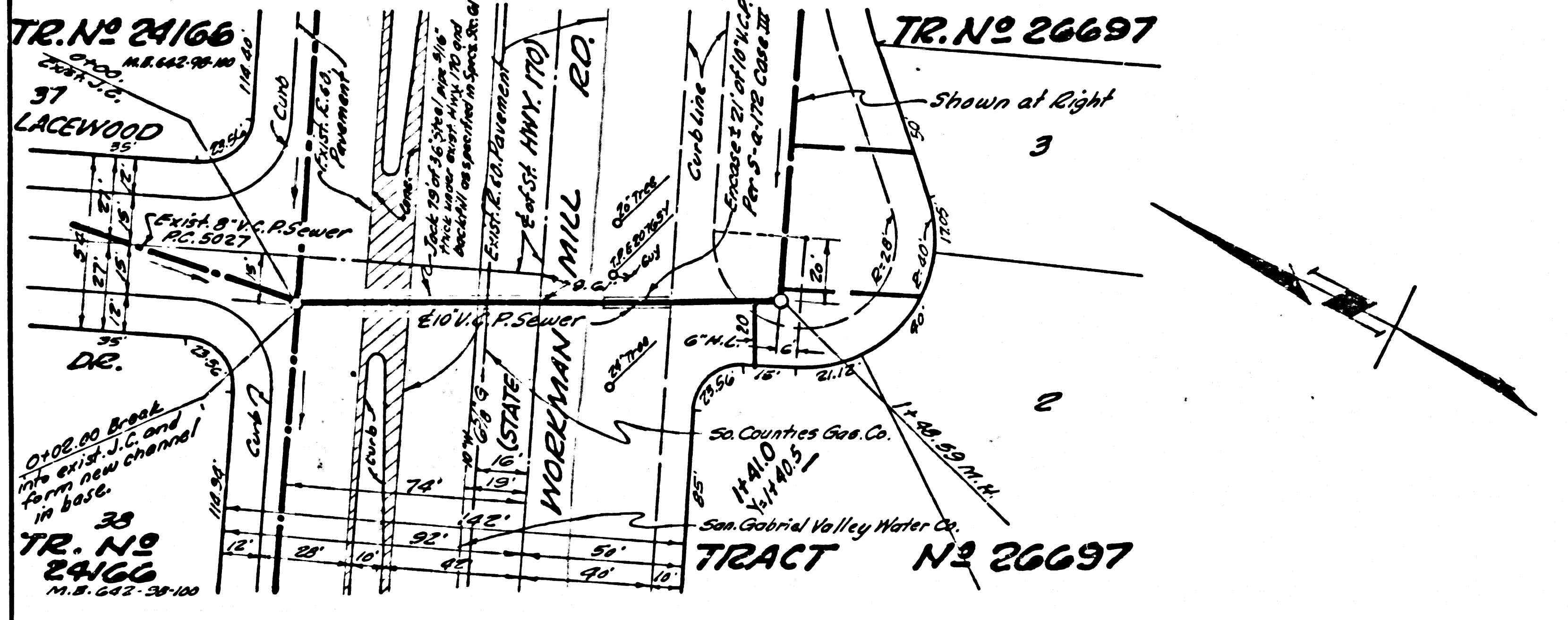
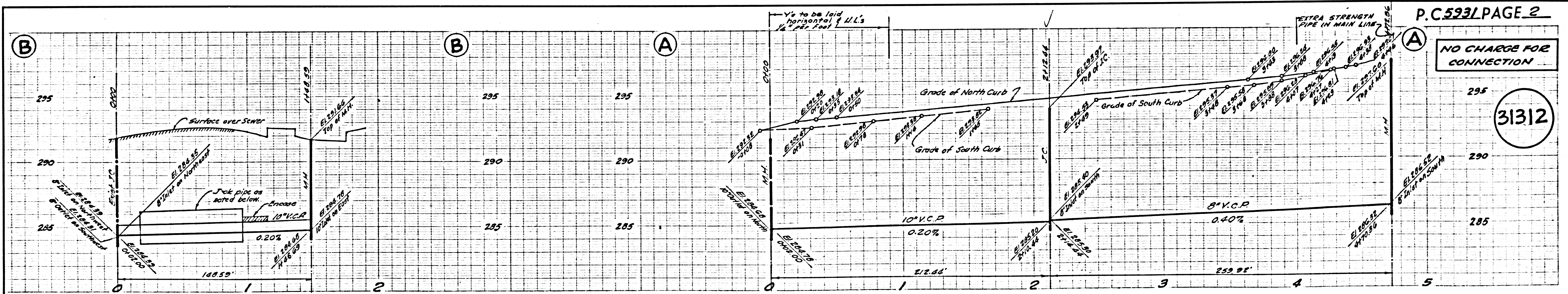
INDEX MAP  
 TRACT NO 26697  
 P.C. 5931 Scale 1"=300'

B.M. 11-122 Workman Mill Rd. & Dirt Road to House No. 1322, 11' N. of E. of Workman Mill Rd. & 12' S.E. from 18" Eucalyptus Tree in well cut thru the pavement & protected by a cast iron cover marked, "County Surveyor Monument" a Std. County Surveyors Monument, set in conc. 10' below the surface, marked "B.M. 11-122 1952 R.E. 63" (Baseline 1955) ELEV. 311.973

NO CHARGE FOR CONNECTION  
*W.C. Reid 9-8-61*

REVISIONS:  
 Page 2, Sec. B.  
 Added 21' x 2' Conn. Encasement.  
 APPROVED: *W.C. Reid* 10-17-61  
 San Dimas Regional Engineer

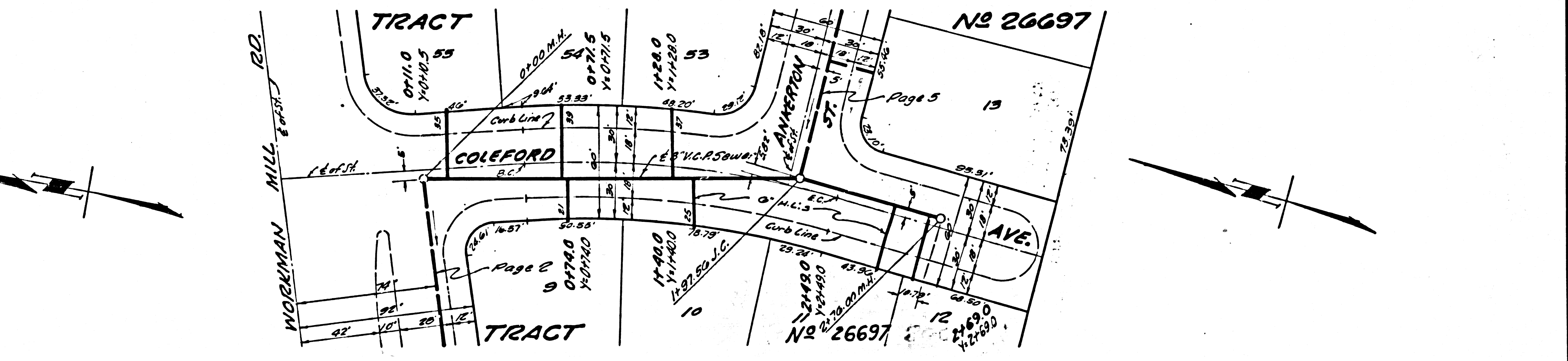
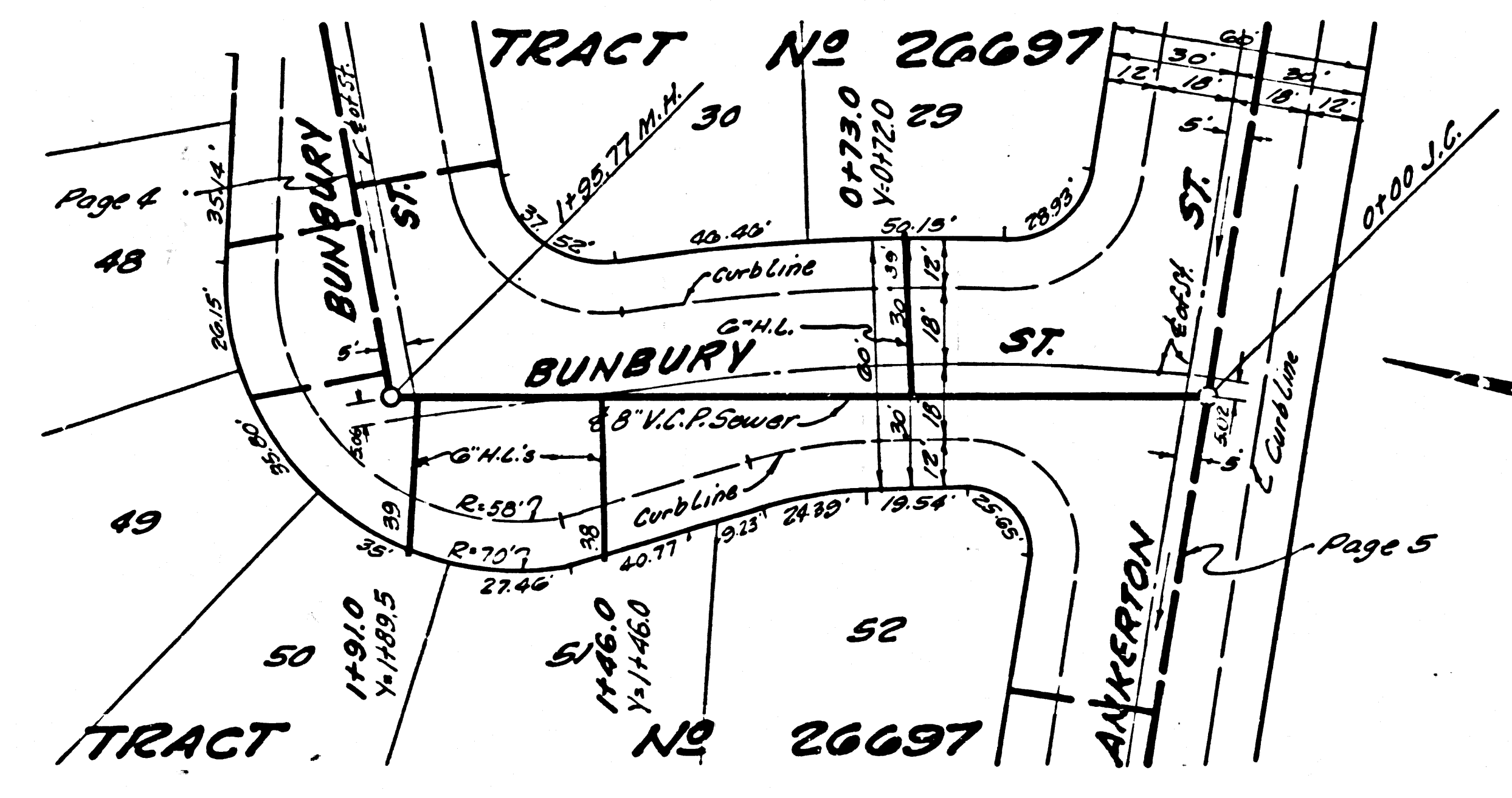
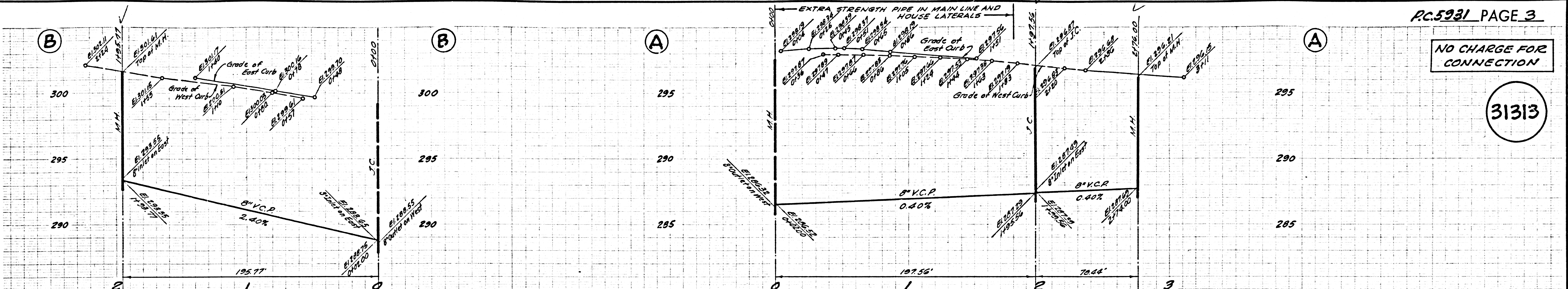
NO CONNECTIONS FOR THE DISPOSAL OF INDUSTRIAL WASTES SHALL BE MADE TO SEWERS SHOWN ON THESE DRAWINGS WITHOUT WRITTEN PERMISSION FROM THE CHIEF ENGINEER AND GENERAL MANAGER OF THE COUNTY SANITATION DISTRICTS.



PC 5931-1940-10-26-20

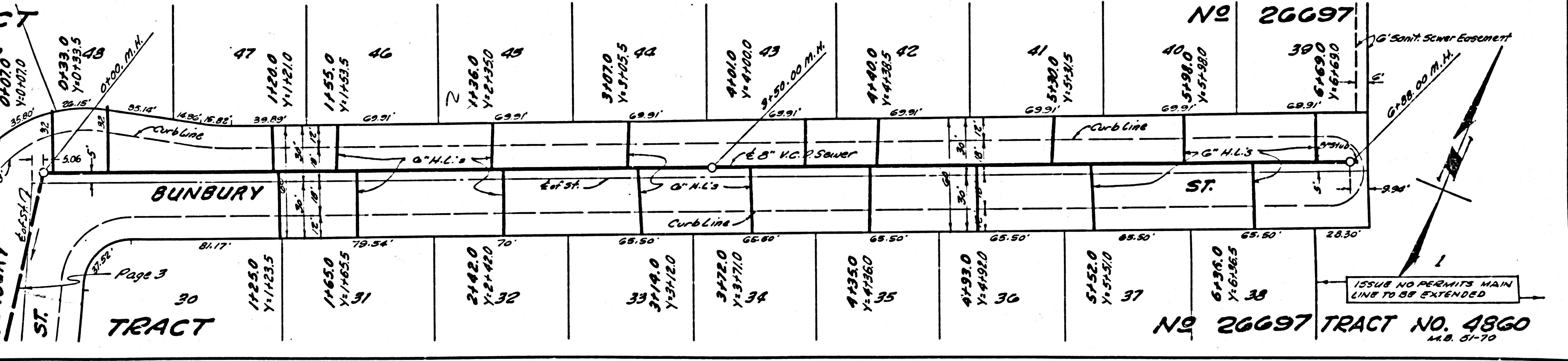
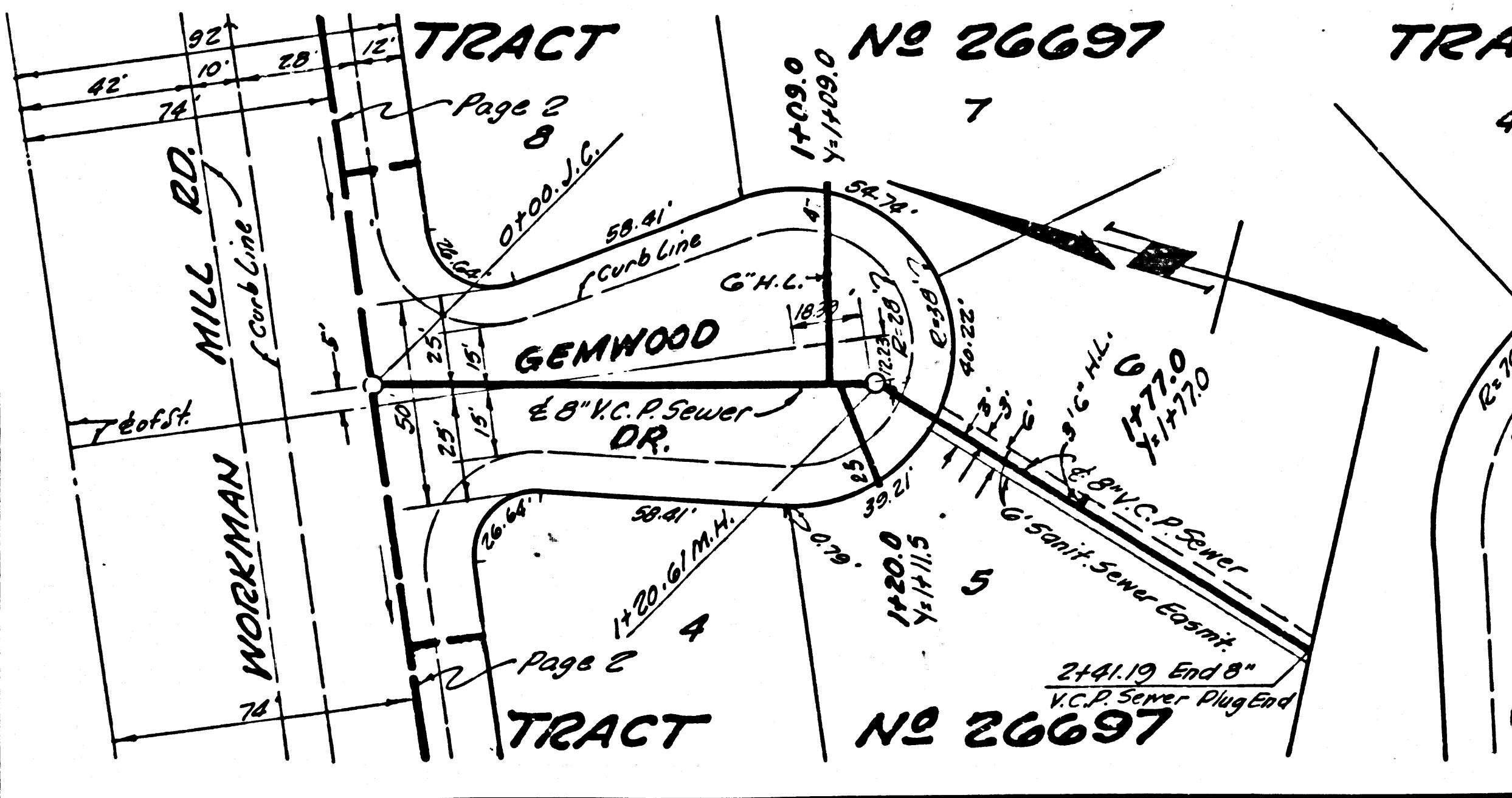
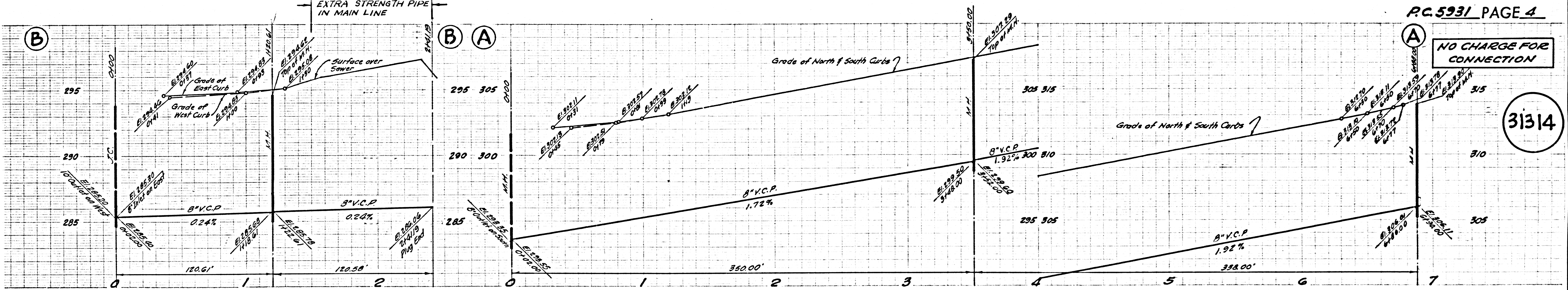
NO CHARGE FOR CONNECTION

31313



NO CHARGE FOR CONNECTION

31314

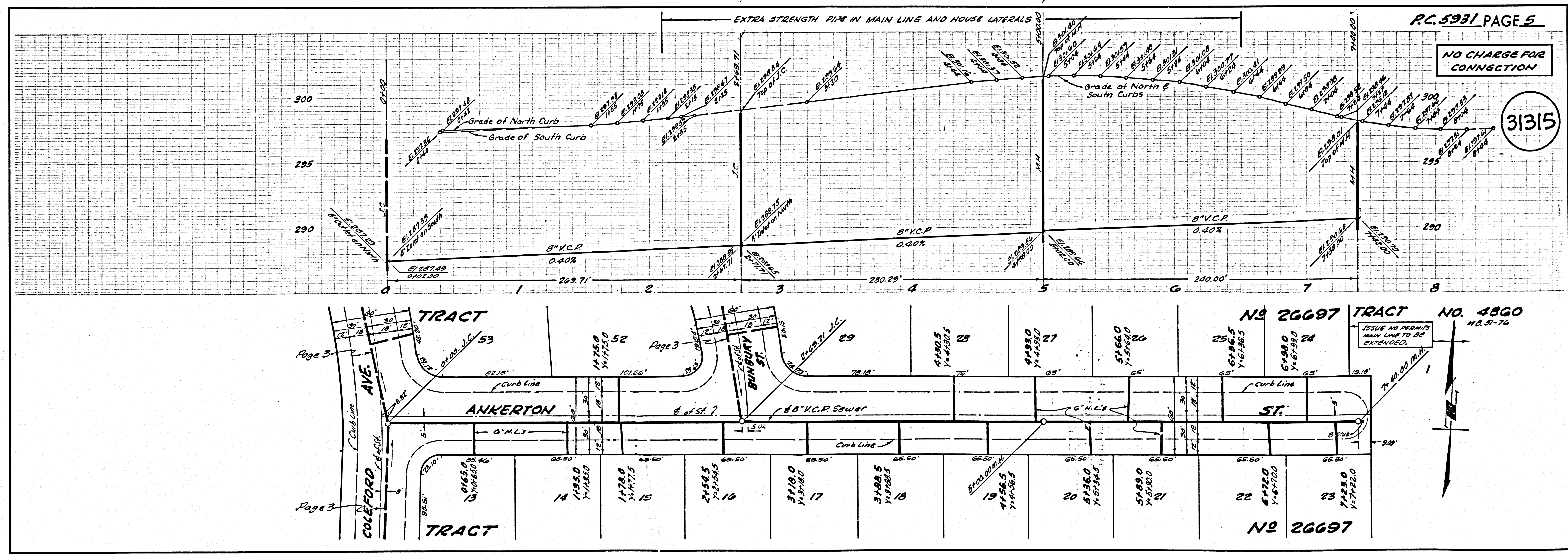


31315-15A-C1-NO-252-23

P.C. 5931 PAGE 5

NO CHARGE FOR CONNECTION

31315



PROPERTY OF JIB