

TRACT No 25247

PRIVATE CONTRACT NO. 5933

W.S. 38 SHEETS; 2 PAGES

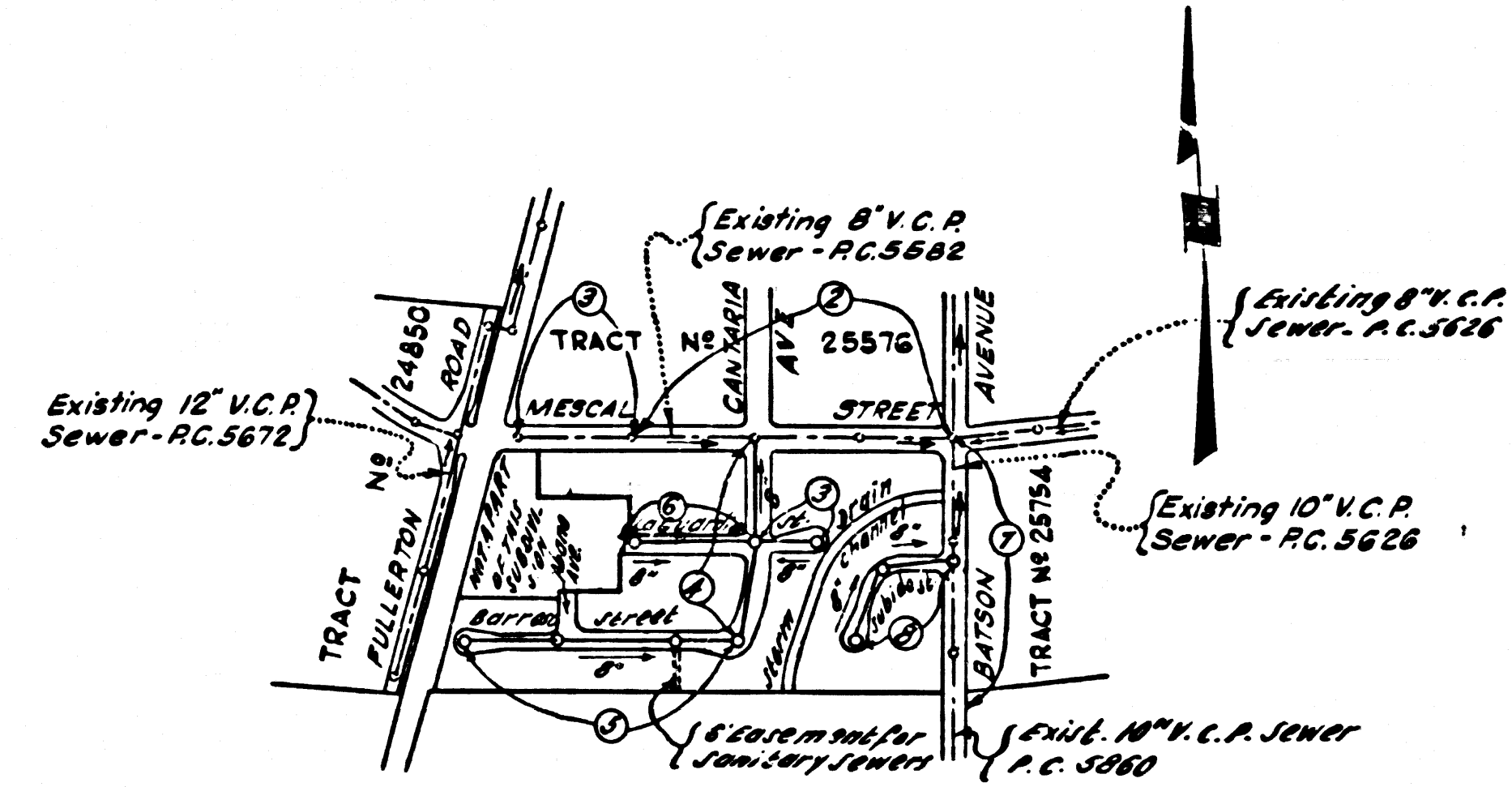
SCALE: VERT. 1"=4' AUGUST, 1961 HORIZ. 1"=40'

PREPARED IN THE OFFICES OF NATIONAL ENGINEERING CO.

By: E. J. Epperson REG. C. E. NO. 5828

FOR LEGEND SEE PLAN NO. S-A-64

31414



INDEX MAP Scale 1"=600' TRACT No 25247 P.C. 5933

REVISION PAGE 2 of 3 Revised house laterals extending southerly between Sta. 2+95 & 11+64.89. APPROVED W.C. Reinhardt 12-15-61

- NOTES: 1. PROVIDE STAKES ON THE PROPERTY LINE OR PROPERTY LINES PRODUCED AT RIGHT ANGLES TO THE SEWER LINE AT THE CENTER LINE OF EACH MANHOLE. 2. NO REPRESENTATIVE OF THE COUNTY ENGINEER WILL SURVEY OR LAY OUT ANY PORTION OF THE WORK. 3. THE OWNER OR HIS AUTHORIZED REPRESENTATIVE SHALL FURNISH THE COUNTY ENGINEER WITH GRADE SHEETS AND STATIONING FOR ALL HOUSE LATERALS AND Y BRANCHES AND SHALL PROVIDE STAKES FOR THEM AT THEIR PROPER LOCATIONS WITH STATIONING PLAINLY MARKED. ANY CHANGE IN LOCATION SHALL BE REQUESTED IN WRITING BY THE OWNER OR HIS REPRESENTATIVE. 4. THE PRIVATE ENGINEER SHALL FURNISH THE HOUSE LATERAL DEFIN AT THE PROPERTY LINE BELOW THE TOP OF CURB ELEVATION FOR EACH HOUSE LATERAL ON THE GRADE SHEET. 5. NO REVISIONS SHALL BE MADE IN THESE PLANS WITHOUT THE APPROVAL OF THE COUNTY ENGINEER. 6. USE STANDARD MANHOLE FRAMES AND COVERS, S-117. 7. USE STANDARD STRENGTH PIPE EXCEPT AS NOTED. 8. USE CEMENT MORTAR OR "WEDGE-LOCK" OR "SPEED-SEAL" FOR ALL V.C.P. JOINTS PER SPEC'S. SECS. 34 & 41. 9. RESURFACE ALL TRENCH WITHIN RAISED AREA TO MEET L.A. COUNTY ROAD DEPT. OR CALIF. STATE HIGHWAY REQUIREMENTS IN ACCORDANCE WITH PERMITS. 10. ENCASE FOUR FEET OF SEWER AT POINTS OF INTERFERENCE WITH POLES, CASE III, S-172. 11. HOUSE LATERALS TO BE CONSTRUCTED WITH INVERTS AT PROPERTY LINE 6 FEET BELOW CURB GRADE EXCEPT AS NOTED. 12. ALL STRUCTURES SHALL BE BRICK SEWER STRUCTURES, S-104. 13. FOR ALLOWABLE LEAKAGE TEST USE FORMULA NO. 1, SPEC'S. SEC. 54. 14. MANHOLE TOPS IN UNIMPROVED RIGHTS-OF-WAY TO BE SIX INCHES ABOVE FINISHED GRADE. 15. THE CONTRACTOR SHALL NOTIFY THE CONSTRUCTION DIVISION BY TELEPHONE, MADISON 9-4747, EXT. 81531 AT LEAST TWENTY-FOUR HOURS BEFORE STARTING ANY WORK UNDER THIS CONTRACT. 16. STANDARD SPECIFICATIONS DATED OCT. 10, 1960 APPLY IN CONSTRUCTION OF THIS PROJECT.

PRIVATE ENGINEER'S NOTICE TO CONTRACTOR

The existence and location of any underground utility pipes or structures shown on these plans were obtained by a search of the available records. To the best of our knowledge there are no existing utilities except as shown on this map. The Contractor is required to take due precautionary measures to protect the utility lines shown and any other lines not of record or not shown on this drawing.

E. J. Epperson Registered Engineer No. 5828

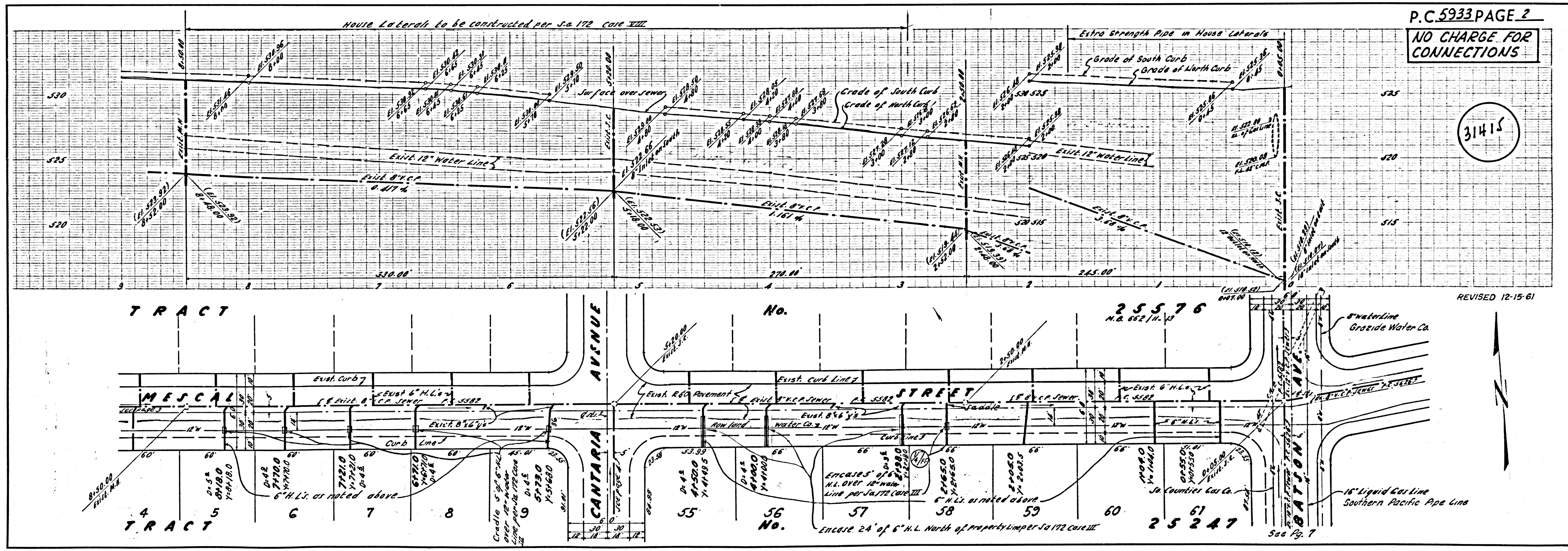
COLLECT CHARGES AS INDICATED B. R. Olson 9-6-61

BENCH MARK: S.G. 1635 County road Dept. S.M. Tag near W.P. edge of cir. conc. storage tank 22' above gr. level on N.E. 1/4 cor. Fullerton Rd. & Mescal St. 150' N.P. & 230' E.P. of int. ELEV. 534.905

NOTE: GRADES TO WHICH THIS IMPROVEMENT IS TO BE CONSTRUCTED ARE SHOWN ON PLANS AND PROFILES. GRADE POINTS FOR TOP OF CURBS, CENTER LINE OF STREETS, OR CENTER LINE OF ALLEYS ARE SHOWN BY CIRCLES ON PROFILES. AT ALL POINTS BETWEEN DESIGNATED POINTS THE GRADES SHALL BE ESTABLISHED SO AS TO CONFORM TO A STRAIGHT LINE DRAWN BETWEEN SAID DESIGNATED POINTS. ELEVATIONS ARE IN FEET ABOVE U.S.C. & G.S. SEA LEVEL DATUM OF 1929. THIS DRAWING AND THE DATA HEREON ARE HEREBY MADE A PART OF THE SPECIFICATIONS. WORK SHALL BE CONSTRUCTED ACCORDING TO SPECIFICATIONS ON FILE IN THE OFFICE OF THE COUNTY ENGINEER AND SHALL BE PROSECUTED ONLY IN THE PRESENCE OF THE COUNTY ENGINEER. BEFORE WORK CAN BE STARTED, THE CONTRACTOR MUST OBTAIN A PERMIT TO EXCAVATE IN COUNTY STREETS FROM THE L.A. COUNTY ROAD DEPT., DISTRICT OFFICE NO. 1 AND PAY A FEE TO THE COUNTY ENGINEER, ROOM 510 County Eng'rs Bldg, 105 W. 4th St., L.A. SUFFICIENT TO COVER THE COST OF CONSTRUCTION INSPECTION AND RECORD PLANS. APPROVAL OF THIS PLAN BY THE COUNTY OF LOS ANGELES DOES NOT CONSTITUTE A REPRESENTATION AS TO THE ACCURACY OF THE LOCATION OF OR THE EXISTENCE OR NON-EXISTENCE OF ANY UNDERGROUND UTILITY PIPE, OR STRUCTURE WITHIN THE LIMITS OF THIS PROJECT. THIS NOTE APPLIES TO ALL PAGES. IF WORK IS TO BE DONE IN A STATE HIGHWAY, A PERMIT MUST BE OBTAINED FROM THE STATE OF CALIFORNIA, DIVISION OF HIGHWAYS, 120 SOUTH SPRING STREET.

COUNTY OF LOS ANGELES, CALIFORNIA APPROVED, JOHN A. LAMBIE, COUNTY ENGINEER APPROVED C.E. COMPTON, CHIEF ENGINEER CA. SAN. DIST. NO. 81 BY: S. K. Hughes SANITATION ENGINEER BY: J. Posthumus OFFICE ENGINEER CHECKED BY: S. K. Hughes 9-6-61 OFFICE OF COUNTY ENGINEER, REG. C. E. NO. 2406

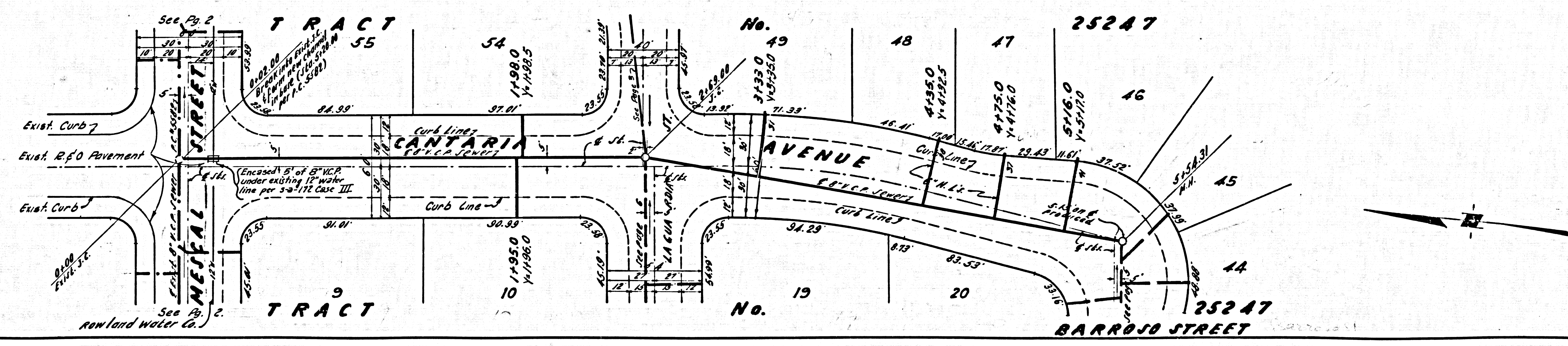
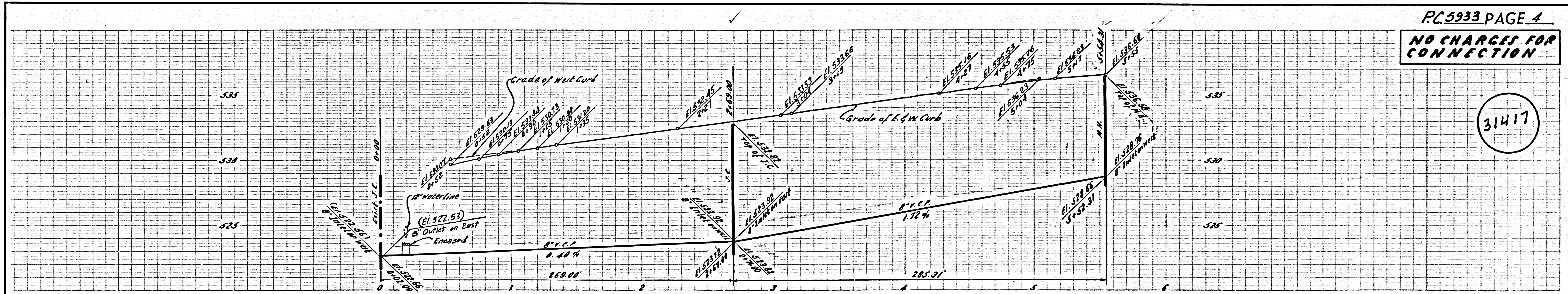
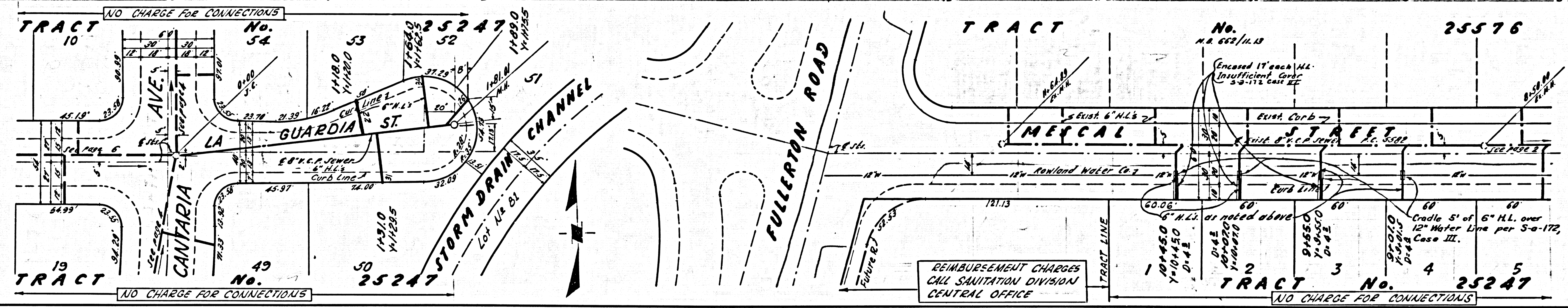
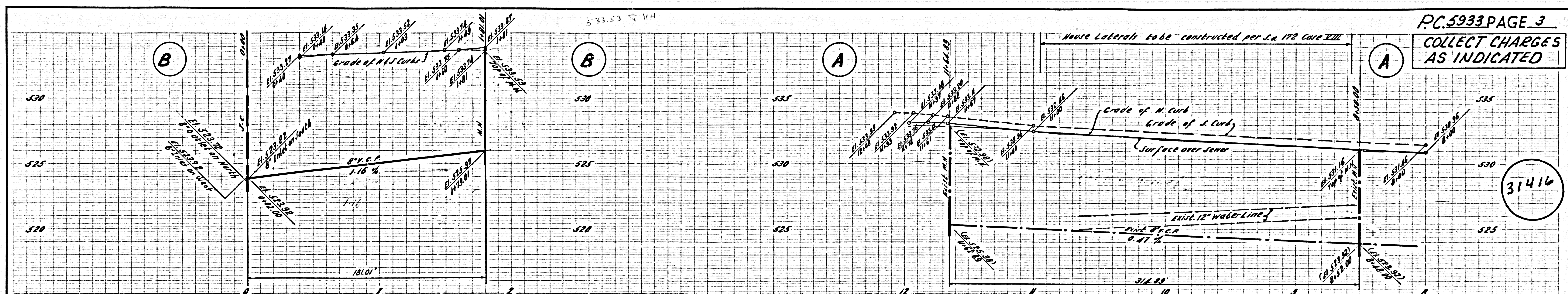
Submitted W.C. Reinhardt 9-6-61 San Dimas Regional Engineer



NO CHARGE FOR CONNECTIONS

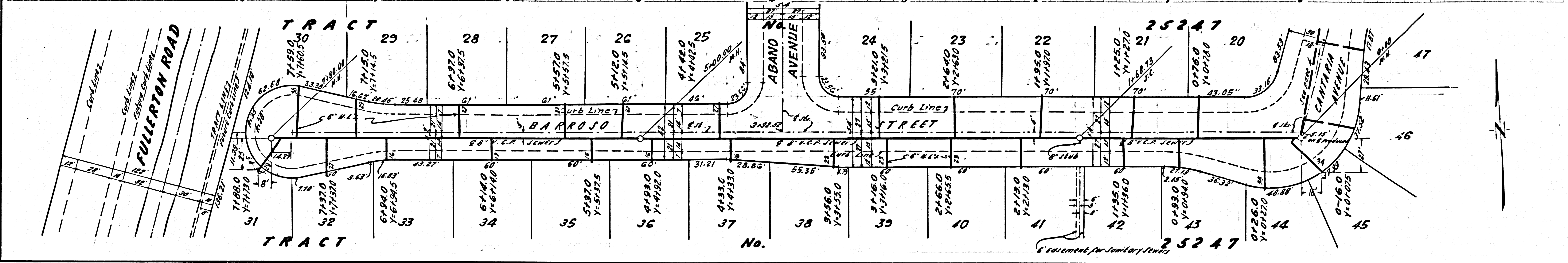
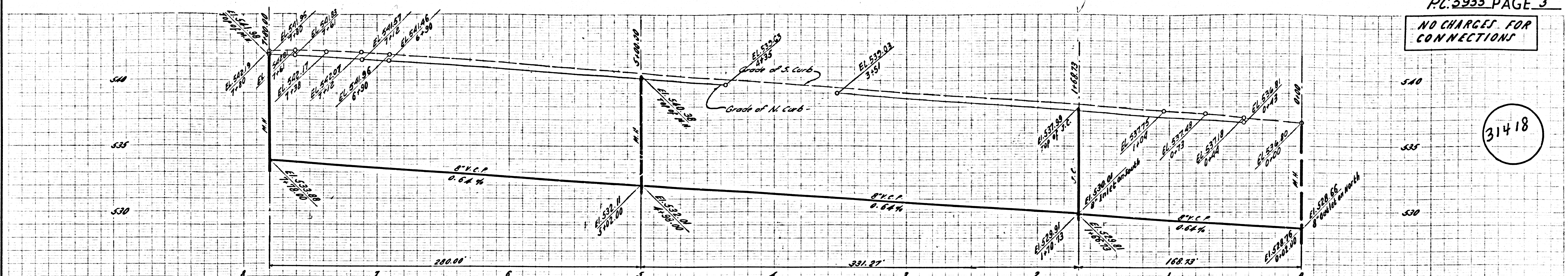
31415

REVISED 12-15-61



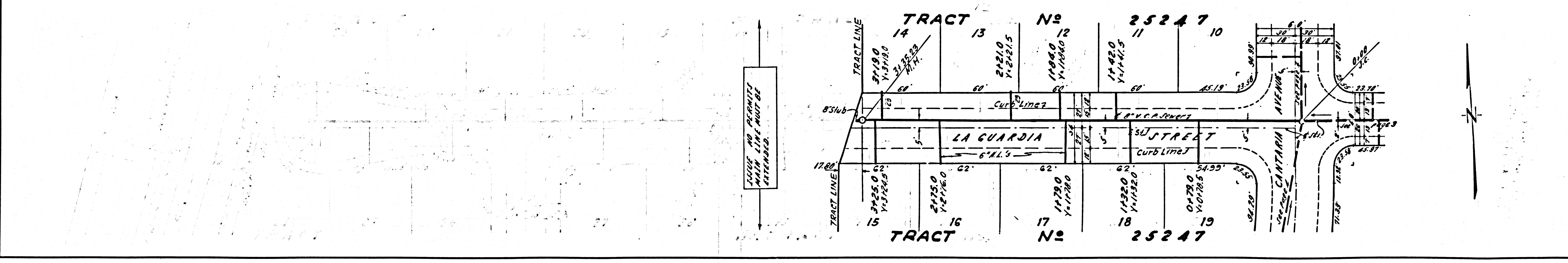
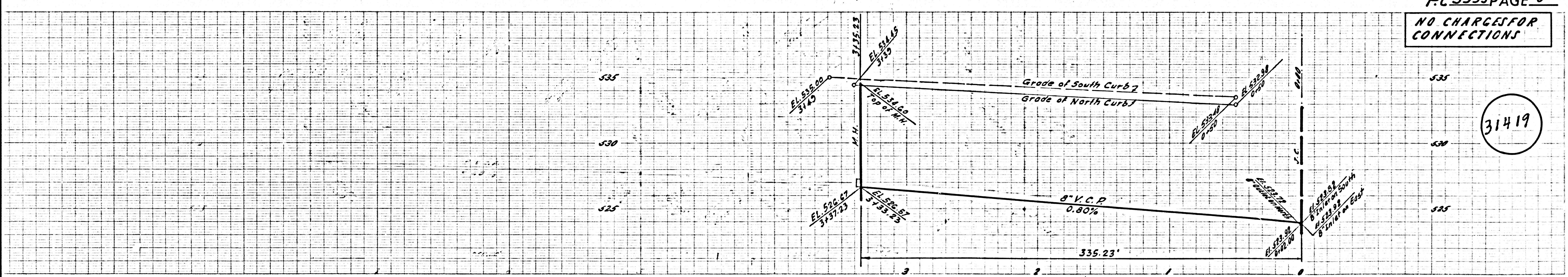
NO CHARGES FOR CONNECTIONS

31418



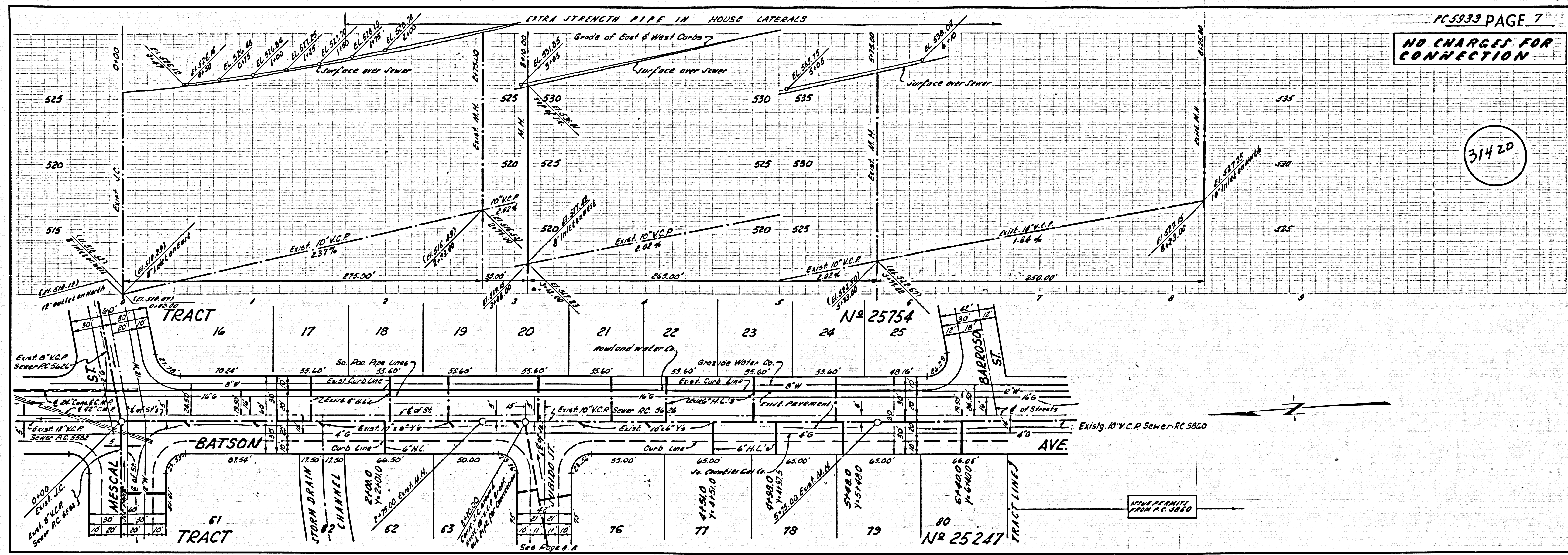
NO CHARGES FOR CONNECTIONS

31419



NO CHARGES FOR CONNECTION

31420



NO CHARGES FOR CONNECTION

31421

