

TRACT NO. 26771

PRIVATE CONTRACT NO. 5935

W.S. 37

3 SHEETS; 5 PAGES

SCALE: VERT. 1"=8' HORIZ. 1"=40' JULY 1961

PREPARED IN THE OFFICES OF KEMMERER ENGR. CO. INC.

By: Robert R. Flores REG. C. E. NO. 11349

FOR LEGEND SEE PLAN NO. S-A-64

NOTE: GRADES TO WHICH THIS IMPROVEMENT IS TO BE CONSTRUCTED ARE SHOWN ON PLANS AND PROFILE. GRADE POINTS FOR TOP OF CURBS, CENTER LINE OF STREETS, OR CENTER LINE OF ALLEYS ARE SHOWN BY CIRCLES ON PROFILES. AT ALL POINTS BETWEEN DESIGNATED POINTS THE GRADE SHALL BE ESTABLISHED SO AS TO CONFORM TO A STRAIGHT LINE DRAWN BETWEEN SAID DESIGNATED POINTS. ELEVATIONS ARE IN FEET ABOVE U.S.C. & G.S. SEA LEVEL DATUM OF 1929. THIS DRAWING AND THE DATA HEREON ARE HEREBY MADE A PART OF THE SPECIFICATIONS. WORK SHALL BE CONSTRUCTED ACCORDING TO SPECIFICATIONS ON FILE IN THE OFFICE OF THE COUNTY ENGINEER AND SHALL BE PROSECUTED ONLY IN THE PRESENCE OF THE COUNTY ENGINEER. BEFORE WORK CAN BE STARTED, THE CONTRACTOR MUST OBTAIN A PERMIT TO EXCAVATE IN COUNTY STREETS FROM THE L.A. COUNTY ROAD DEPT., DISTRICT OFFICE NO. 1, AND FROM THE COUNTY ENGINEER, ROOM 3000 SOUTH SPRING STREET, DISTRICT OFFICE NO. 1, AND FROM THE COUNTY ENGINEER, ROOM 3000 SOUTH SPRING STREET, DISTRICT OFFICE NO. 1, SUFFICIENT TO COVER THE COST OF CONSTRUCTION INSPECTION AND RECORD PLANS. APPROVAL OF THIS PLAN BY THE COUNTY OF LOS ANGELES DOES NOT CONSTITUTE A REPRESENTATION AS TO THE ACCURACY OF THE LOCATION OF OR THE EXISTENCE OR NON-EXISTENCE OF ANY UNDERGROUND UTILITY PIPE, OR STRUCTURE WITHIN THE LIMITS OF THIS PROJECT. THIS NOTE APPLIES TO ALL PAGES. IF WORK IS TO BE DONE IN A STATE HIGHWAY, A PERMIT MUST BE OBTAINED FROM THE STATE OF CALIFORNIA, DIVISION OF HIGHWAYS, 126 SOUTH SPRING STREET.

COUNTY OF LOS ANGELES, CALIFORNIA

APPROVED, JOHN A. LAMBIE, COUNTY ENGINEER APPROVED, J.D. Prockers, CHIEF ENGINEER

CO. SAN. DIST. NO. 21

By: [Signature] SANITATION ENGINEER

CHECKED BY: [Signature] OFFICE ENGINEER

OFFICE OF COUNTY ENGINEER, REG. C. E. NO. 3486

SUBMITTED: [Signature] SAN DIMAS REGIONAL ENGINEER

NOTE: THE EXISTENCE AND LOCATION OF ANY UNDERGROUND UTILITY PIPES OR STRUCTURES SHOWN ON THESE PLANS ARE OBTAINED BY A SEARCH OF THE AVAILABLE RECORDS TO THE BEST OF OUR KNOWLEDGE THERE ARE NO EXISTING UTILITIES EXCEPT AS SHOWN ON THESE DRAWINGS. THE CONTRACTOR IS REQUIRED TO TAKE DUE PRECAUTIONARY MEASURES TO PROTECT THE UTILITY LINES SHOWN AND ANY OTHER LINES NOT OF RECORD OR NOT SHOWN ON THESE DRAWINGS.

NO PERMITS TO BE ISSUED UNTIL OUTLET SEWER IS DEDICATED TO COUNTY

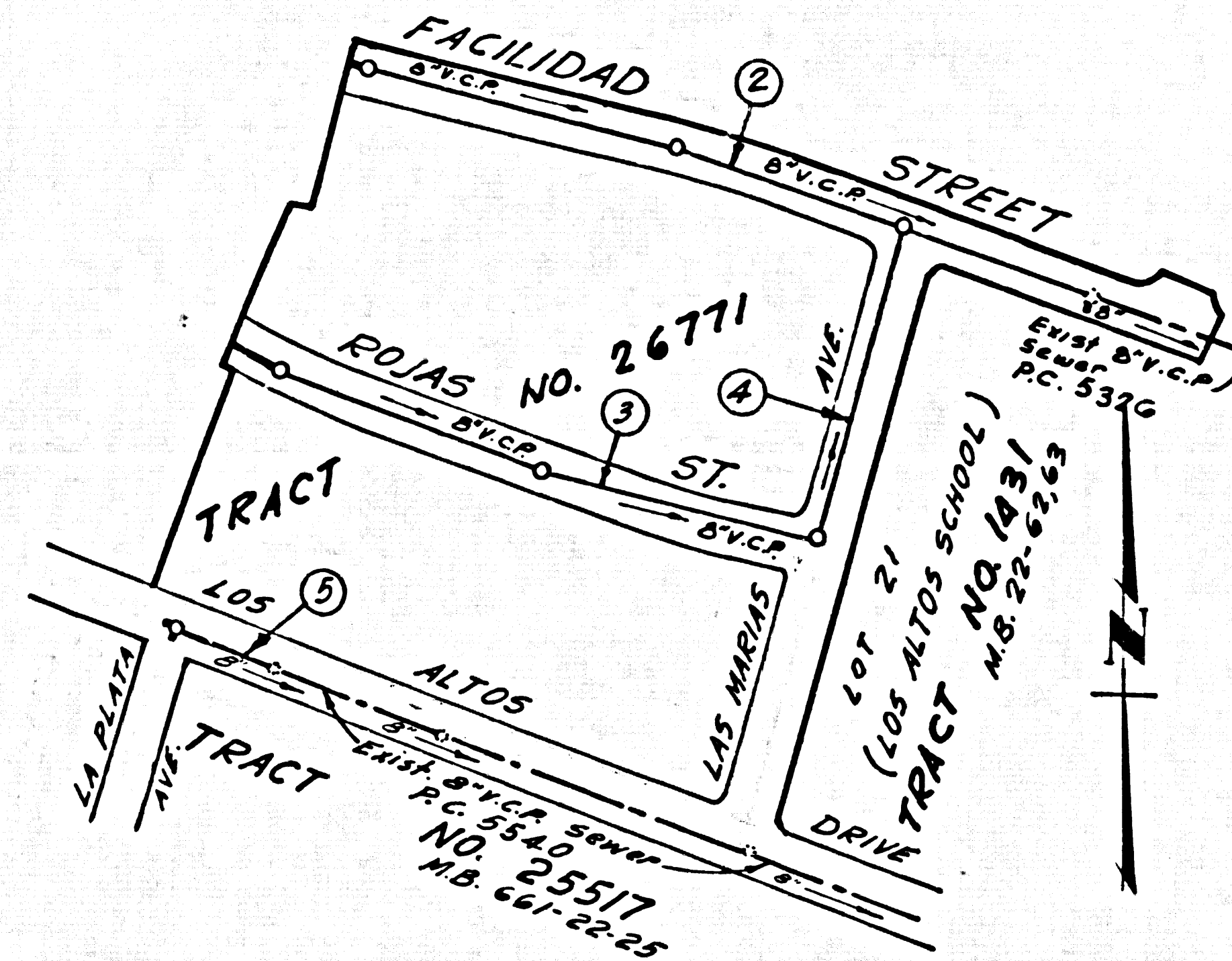
BENCH MARK: SQ 1603 P.C. 2 & 8 N. S.W. Cor. of Weir Box @ N.E. Cor. of La Cuesta Ave. & La Subida Dr. ± 27' N. & 331' E. 42. Lot. M.Kd. "B.M. J2" Elev. 563.121 Whittier 1955

- 1. PROVIDE STAKES ON THE PROPERTY LINE OR PROPERTY LINES PRODUCED AT RIGHT ANGLES TO THE SEWER LINE AT THE CENTER LINE OF EACH MANHOLE.
2. NO REPRESENTATIVE OF THE COUNTY ENGINEER WILL SURVEY OR LAY OUT ANY PORTION OF THE WORK.
3. THE OWNER OR HIS AUTHORIZED REPRESENTATIVE SHALL FURNISH THE COUNTY ENGINEER WITH GRADE SHEETS AND STATIONING FOR ALL HOUSE LATERALS AND Y BRANCHES AND SHALL PROVIDE STAKES FOR THEM AT THEIR PROPER LOCATIONS WITH STATIONING PLAINLY MARKED. ANY CHANGE IN LOCATION SHALL BE REQUESTED IN WRITING BY THE OWNER OR HIS REPRESENTATIVE.
4. THE PRIVATE ENGINEER SHALL FURNISH THE HOUSE LATERAL DEPTH AT THE PROPERTY LINE BELOW THE TOP OF CURB ELEVATION FOR EACH HOUSE LATERAL ON THE GRADE SHEET.
5. NO REVISIONS SHALL BE MADE IN THESE PLANS WITHOUT THE APPROVAL OF THE COUNTY ENGINEER.
6. USE STANDARD MANHOLE FRAMES AND COVERS, S-117.
7. USE EXTRA STRENGTH PIPE, ALL PIPE STANDARD DEPTH.
8. USE CEMENT MORTAR OR "WEDGE-LOCK" OR "SPEED-SEAL" FOR ALL V.C.P. JOINTS PER SPECS., SECS. 36 & 4E.
9. RESURFACE ALL TRENCH WITHIN RAISED AREA TO MEET L.A. COUNTY ROAD DEPT. OR CALIF. STATE HIGHWAY REQUIREMENTS IN ACCORDANCE WITH PERMITS.
10. ENCASE FOUR FEET OF SEWER AT POINTS OF INTERFERENCE WITH POLES, CASE III, S-172.
11. HOUSE LATERALS TO BE CONSTRUCTED WITH INVERTS AT PROPERTY LINE 6 FEET BELOW CURB GRADE.
12. ALL STRUCTURES SHALL BE BRICK SEWER STRUCTURES, S-104.
13. FOR ALLOWABLE LEAKAGE TEST USE FORMULA NO. 1, SPECS., SEC. 54.
14. MANHOLE TOPS IN UNIMPROVED RIGHTS-OF-WAY TO BE SIX INCHES ABOVE FINISHED GRADE.
15. THE CONTRACTOR SHALL NOTIFY THE CONSTRUCTION DIVISION BY TELEPHONE, MADISON 3-474, AT 8:15 AM AT LEAST TWENTY-FOUR HOURS BEFORE STARTING ANY WORK UNDER THIS CONTRACT.
16. STANDARD SPECIFICATIONS DATED OCT. 10, 1960 APPLY IN THE CONSTRUCTION OF THIS PROJECT.

NO CONNECTIONS FOR THE DISPOSAL OF INDUSTRIAL WASTES SHALL BE MADE TO SEWERS SHOWN ON THESE DRAWINGS WITHOUT WRITTEN PERMISSION FROM THE CHIEF ENGINEER AND GENERAL MANAGER OF THE COUNTY SANITATION DISTRICTS.

COLLECT CHARGES AS INDICATED

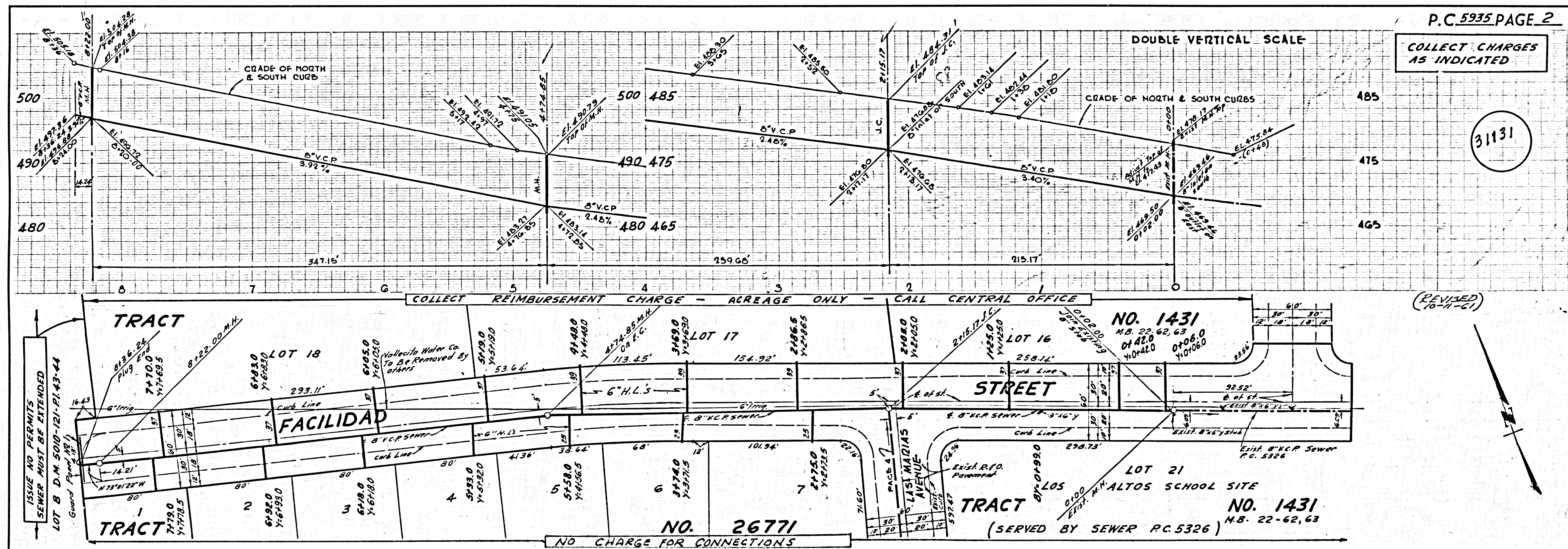
7.77 C. Dennis 9-20-61



KEY MAP TRACT NO. 26771 P.C. 5935 SCALE: 1"=200'

REVISION: ADDED HOUSE LATERALS EXTENDING NORTHEASTLY ON FACILIDAD STREET BETWEEN STATIONS 0+00 AND 0+22.00 W.C. Prockers 10-11-61 SANITATION REGIONAL ENGINEER

DOUBLE SCALE VERTICAL



COLLECT CHARGES AS INDICATED

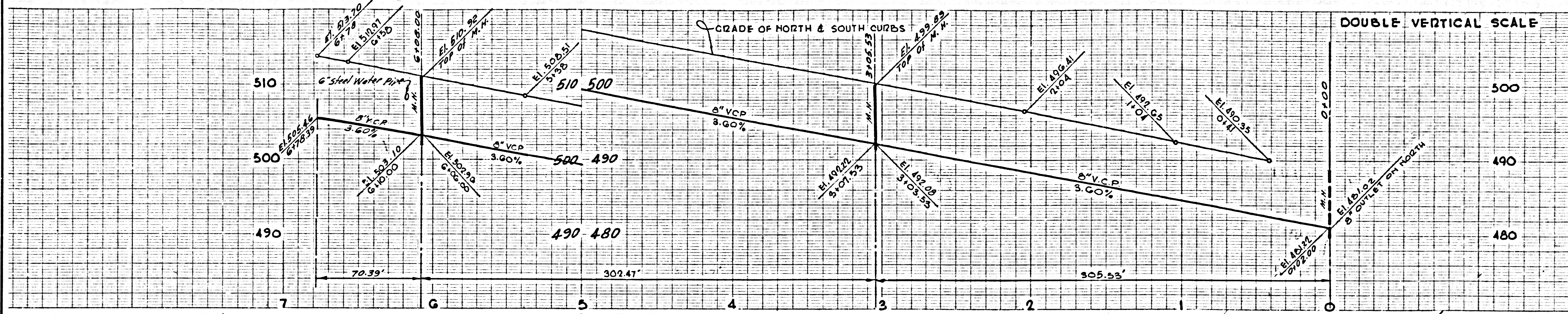
31131

(REVISED) 10-11-61

ISSUE NO PERMITS SEWER MUST BE EXTENDED LOT B D.M. 500-121-PI. 43-44 Guard Panel (S-1)

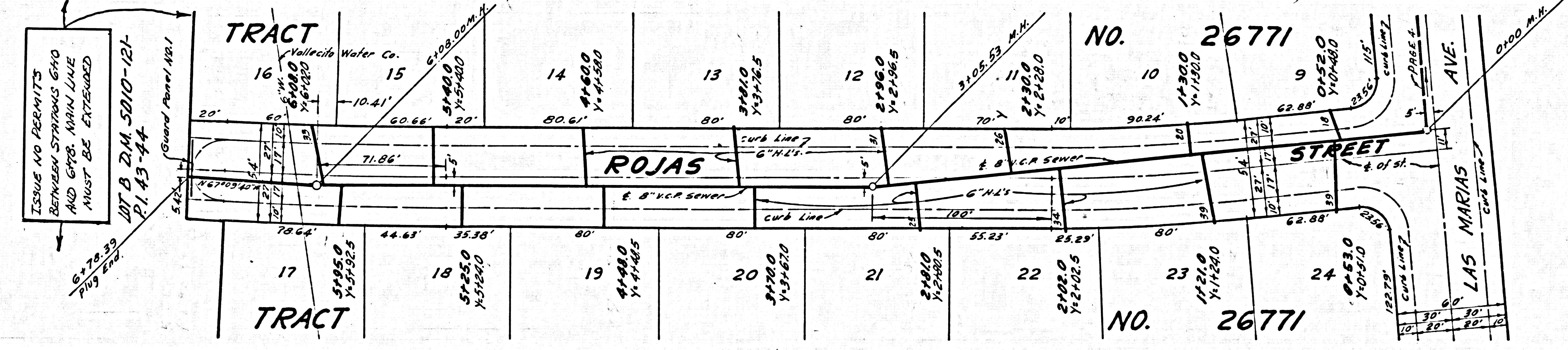
NO CHARGE FOR CONNECTIONS

TRACT NO. 1431 M.B. 22-62-63 0+42.0 0+06.0 1+0+06.0



DOUBLE VERTICAL SCALE
NO CHARGE FOR CONNECTIONS.

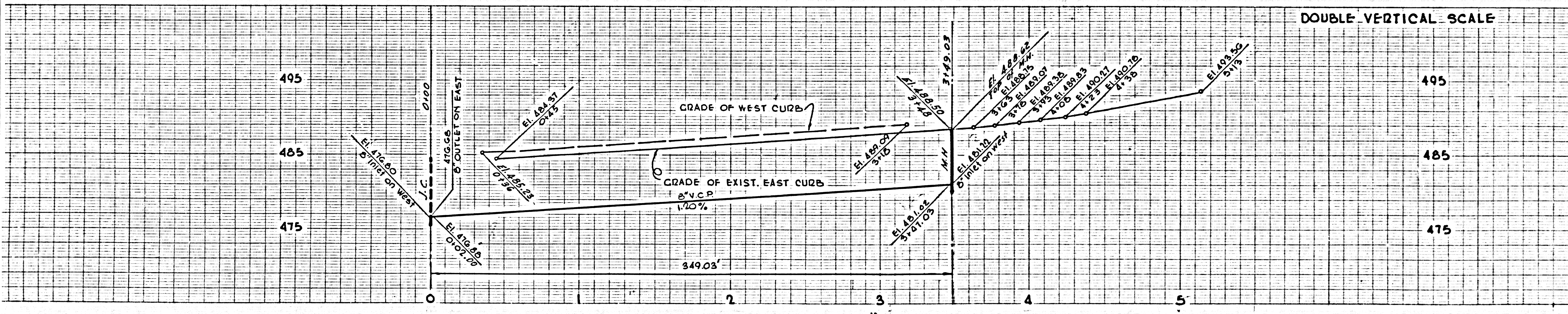
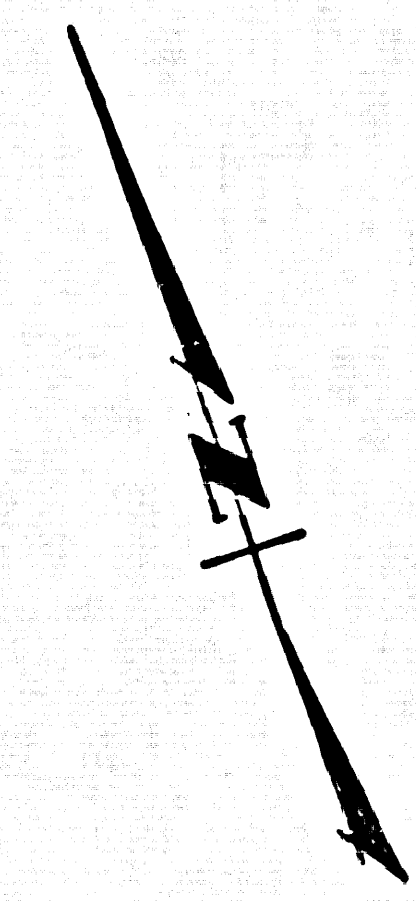
31132



ISSUE NO PERMITS
BETWEEN STATIONS 6+40
AND 6+76. MAIN LINE
MUST BE EXTENDED

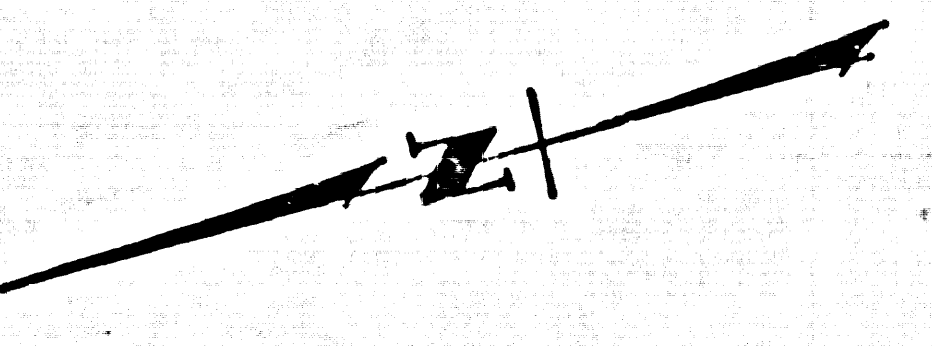
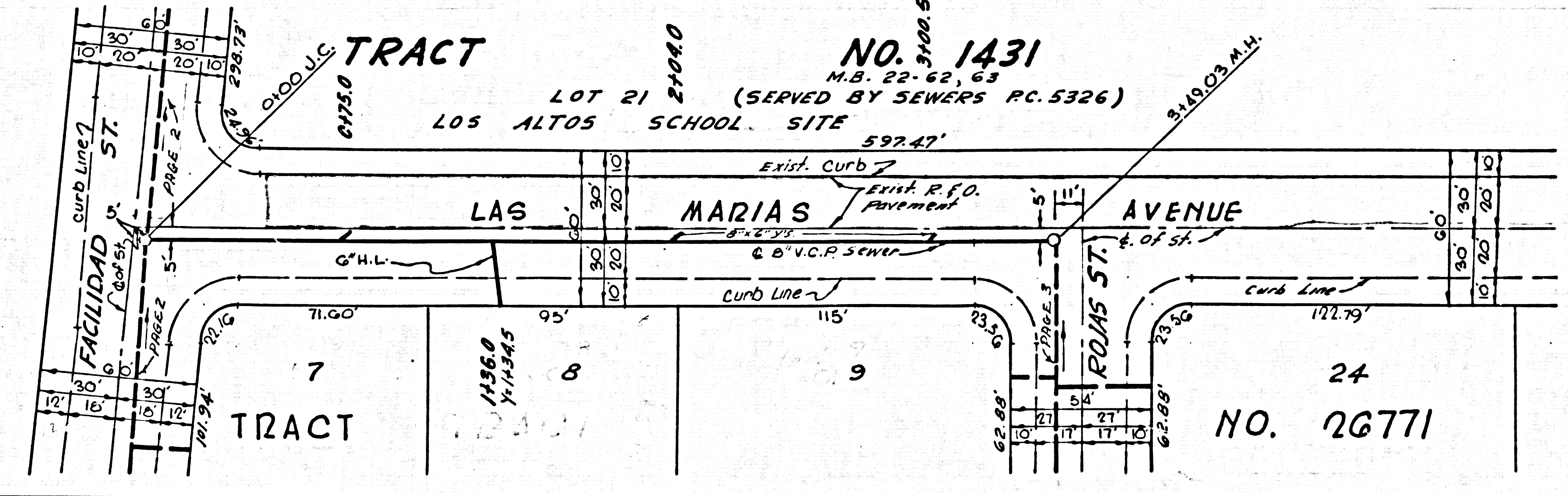
LOT B D.M. 5010-121-
P. 1.43-44

Guard Panel No. 1

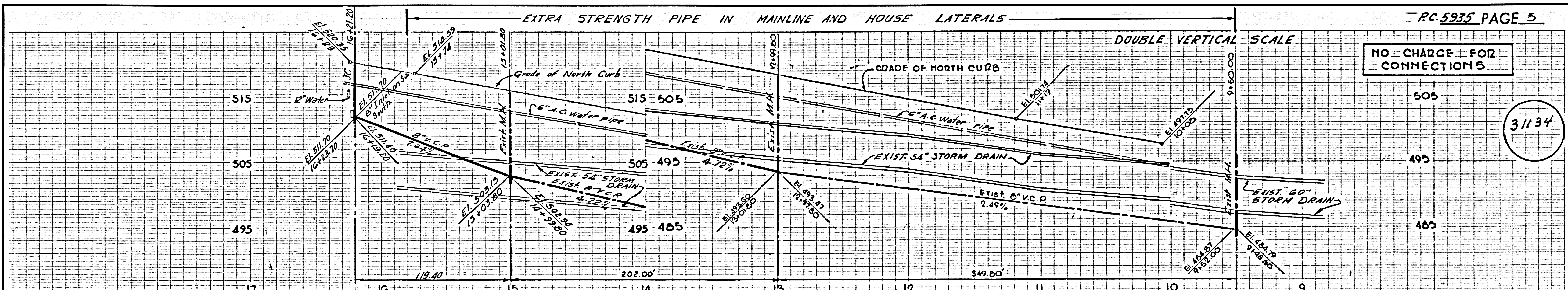


DOUBLE VERTICAL SCALE
NO CHARGES FOR CONNECTIONS.

31133



26771



NO CHARGE FOR CONNECTIONS

31134

