

DOUBLE SCALE
LOMITA BLDG. DIST. NO. 12

PROFILE ALIGNMENT AND GRADE OF **P.C. 5939**
SANITARY SEWERS PAGE 1
TO BE CONSTRUCTED IN **J.N. 0356.30**

TRACT N° 24712
PRIVATE CONTRACT NO. 5939

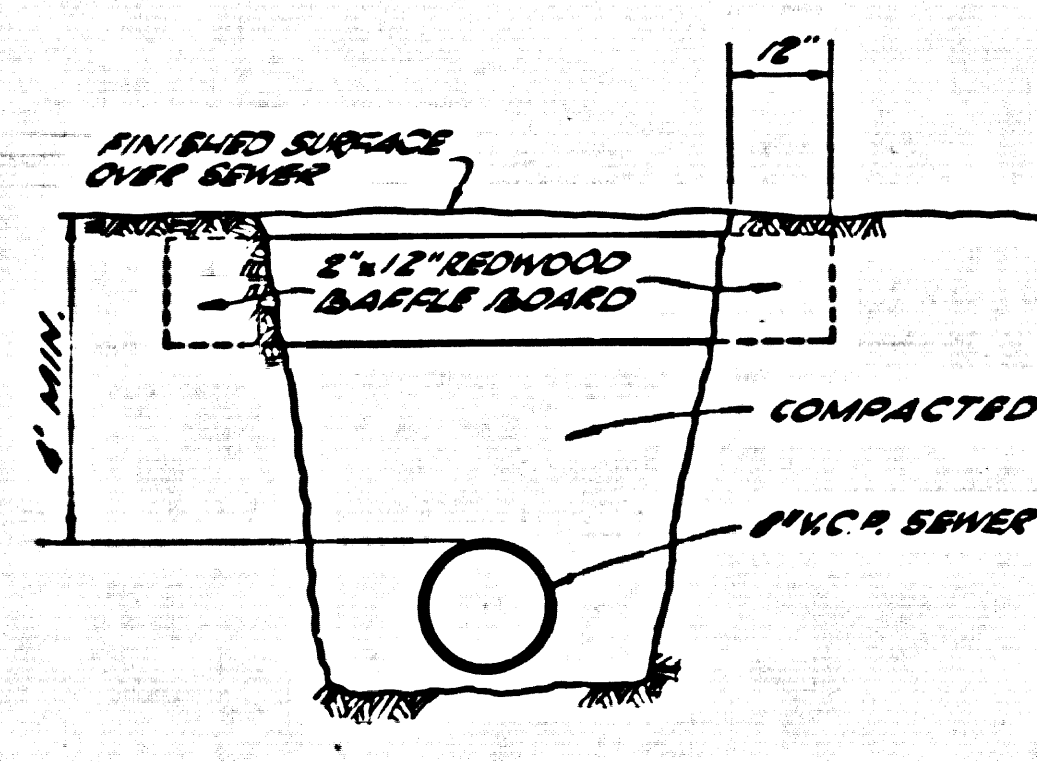
W.S. 27
3 SHEETS; 6 PAGES
SCALE: VERT. 1"=4' HORIZ. 1"=40'
DEC. 1961
PREPARED IN THE OFFICES OF
SOUTH BAY ENGINEERING CORP.
By: *Raymond L. Quigley*
REG. C. E. NO. 7191

34140

Revisions:
Page 9A: Changed grade alignment. Added 8" x 6" wye at Sta. 0+00.
Page 4C: Changed grade alignment of sewer. Changed length of sewer due to new survey data. Added 4" x 11" to East 8" x 6" wye to serve Lot 7.
APPROVED: *Ralph Schala*
Date: 5-6-63 R.C.E. # 12906

Revision:
1. Re-aligned sewer from Montalaga Drive S'ly approx. 23.69 Ft page 5 Sec A.
2. Revised grades on Sewers on page 5 Sec A & page 6 Sec A & B.
Approved: *Jack C. Posing*
Date: 11-5-64 R.E. N° 5631

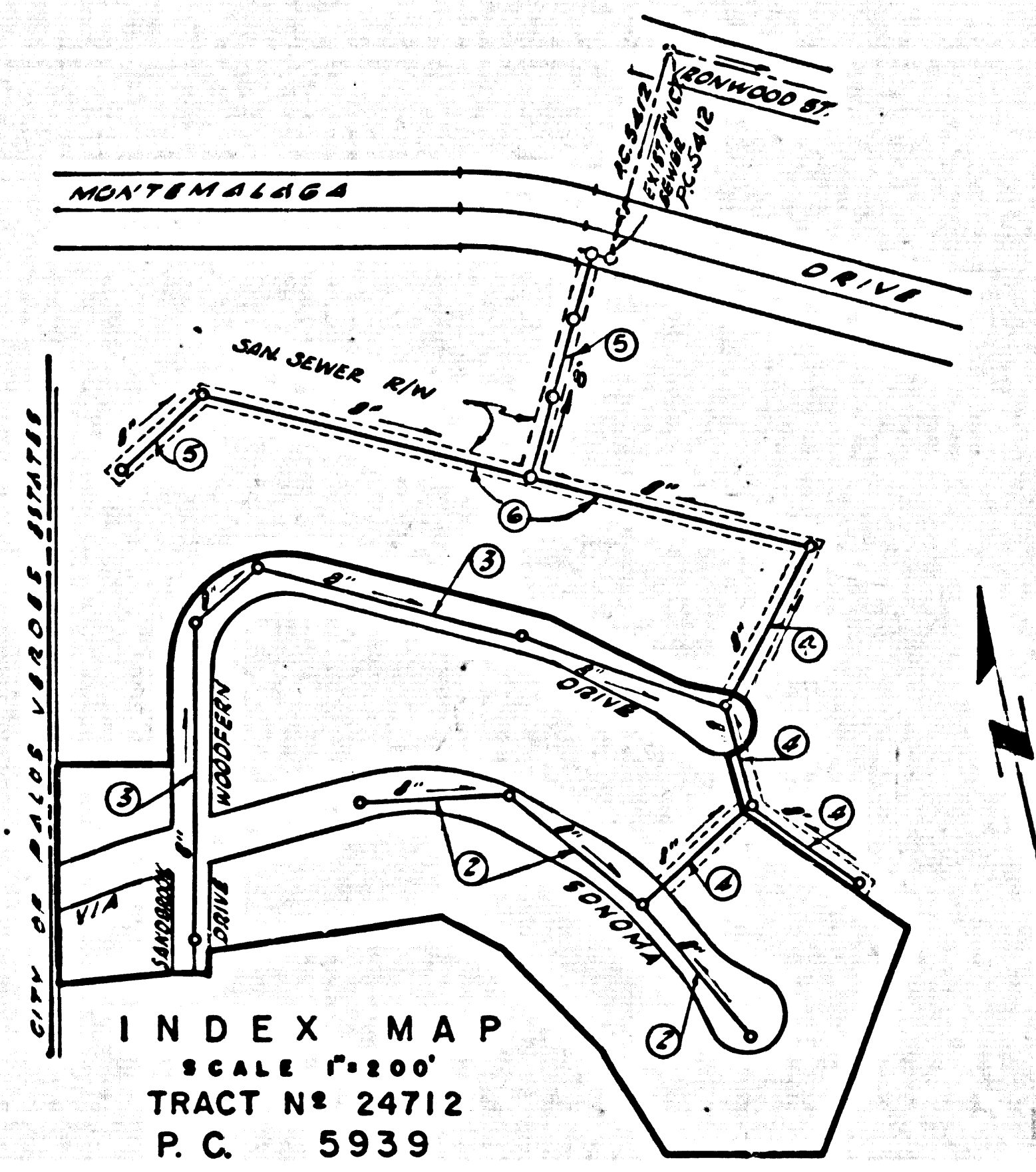
NO CHARGE FOR CONNECTIONS
L. Curie 3-26-62



BAFFLE BOARD DETAIL
NOT TO SCALE

NOTES:-
1. EACH END OF BAFFLE BOARD SHALL EXTEND 12" INTO UNDISTURBED GROUND.
2. THE LOWER LAYER OF BACKFILL TO BE 12" MIN. TYPICAL. TOPSOIL SHALL BE PLANTED IN PLACE AND PLANTED WITH GRASS AND THE SOILS REFINED AND AERATED BY HAND TO 10% DEPTH.
3. BAFFLE BOARD SHALL BE BENDED SO THAT THE TOP OF THE LOWER BOARD SHALL BE LEVEL WITH THE BOTTOM OF THE UPPER BOARD.
4. BAFFLE BOARDS NOT INSTALLED. CERTIFIED COMPRESSION OBTAINED.

Revision:
1. Added 2 1/2" H.L. on Page 3, Sec. B at approx. sta. 4+07.7+20.
2. Added 8" x 6" wye on page 5, Sec. B.
Raymond L. Quigley
Approved: *Ralph Schala*
Date: 10-1-63 R.C.E. # 13946

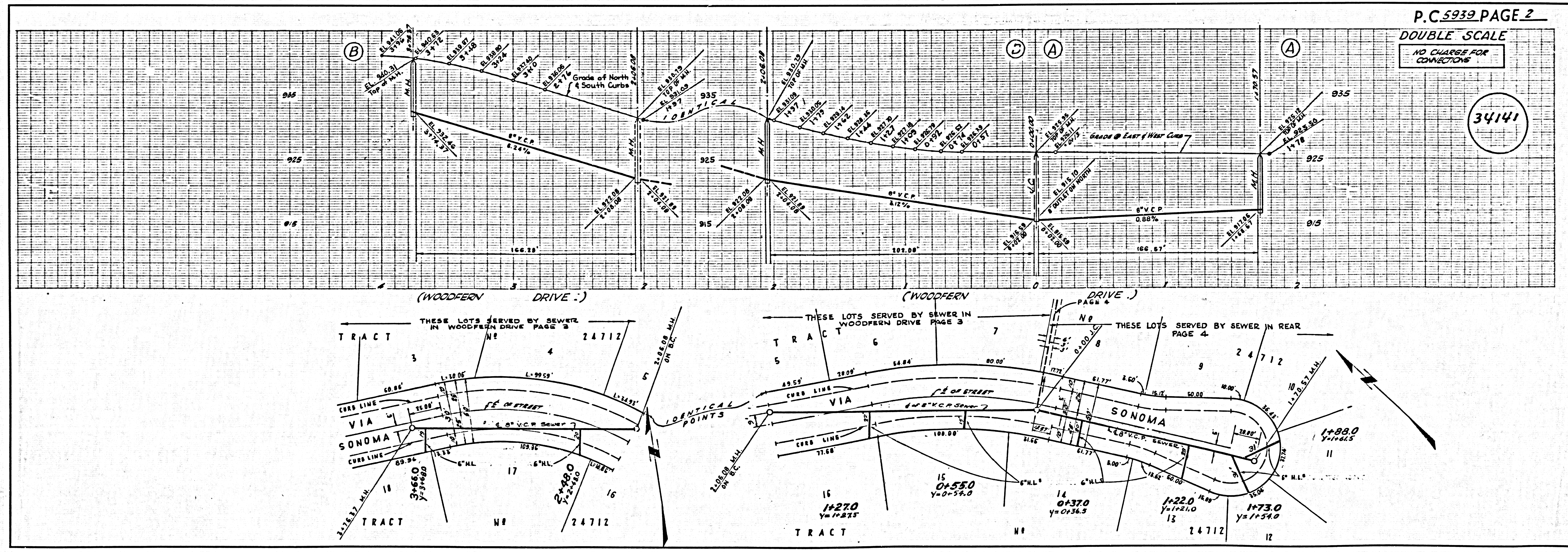


- NOTES:
1. PROVIDE STAKES ON THE PROPERTY LINE OR PROPERTY LINES PRODUCED AT RIGHT ANGLES TO THE SEWER LINE AT THE CENTER LINE OF EACH MANHOLE.
 2. NO REPRESENTATIVE OF THE COUNTY ENGINEER WILL SURVEY OR LAY OUT ANY PORTION OF THE WORK.
 3. THE OWNER OR HIS AUTHORIZED REPRESENTATIVE SHALL FURNISH THE COUNTY ENGINEER WITH GRADE SHEETS AND STATIONING FOR ALL HOUSE LATERALS AND Y BRANCHES AND SHALL PROVIDE STAKES FOR THEM AT THEIR PROPER LOCATIONS WITH STATIONING PLAINLY MARKED. ANY CHANGE IN LOCATION SHALL BE REQUESTED IN WRITING BY THE OWNER OR HIS REPRESENTATIVE.
 4. THE PRIVATE ENGINEER SHALL FURNISH THE HOUSE LATERAL DEPTH AT THE PROPERTY LINE BELOW THE TOP OF CURB ELEVATION FOR EACH HOUSE LATERAL ON THE GRADE SHEET.
 5. NO REVISIONS SHALL BE MADE IN THESE PLANS WITHOUT THE APPROVAL OF THE COUNTY ENGINEER.
 6. USE STANDARD MANHOLE FRAMES AND COVERS, S-117.
 7. USE EXTRA STRENGTH PIPE, ALL PIPE IS STANDARD DEPTH EXCEPT AS NOTED.
 8. USE "WEDGE-LOCK" OR "SPED-SEAL" FOR ALL V.C.P. JOINTS PER SPECS. SECT. 34 & 44.
 9. RESURFACE ALL TRENCH WITHIN PAVED AREA TO MEET L.A. COUNTY ROAD DEPT. OR CALIF. STATE HIGHWAY REQUIREMENTS IN ACCORDANCE WITH PERMITS.
 10. ENCASE FOUR FEET OF SEWER AT POINTS OF INTERFERENCE WITH POLES, CASE III, S-172.
 11. HOUSE LATERALS TO BE CONSTRUCTED WITH INVERTS AT PROPERTY LINE... 6 FEET BELOW CURB GRADE EXCEPT AS NOTED.
 12. ALL STRUCTURES SHALL BE BRICK SEWER STRUCTURES, S-104.
 13. FOR ALLOWABLE LEAKAGE TEST USE FORMULA NO. 1 SPEC'S. SEC. 54.
 14. MANHOLE TOPS IN UNIMPROVED RIGHTS-OF-WAY TO BE SIX INCHES ABOVE FINISHED GRADE.
 15. THE CONTRACTOR SHALL NOTIFY THE CONSTRUCTION DIVISION BY TELEPHONE, MADISON 9-4747, EXT. 81641 AT LEAST TWENTY-FOUR HOURS BEFORE STARTING ANY WORK UNDER THIS CONTRACT.
 16. SPECIFICATIONS DATED OCT. 22, 1961 APPLY TO THE CONSTRUCTION OF THIS PROJECT.

NOTE:
GRADES TO WHICH THIS IMPROVEMENT IS TO BE CONSTRUCTED ARE SHOWN ON PLANS AND PROFILES. GRADE POINTS FOR TOP OF CURBS, CENTER LINE OF STREETS, OR CENTER LINE OF ALLEYS ARE SHOWN BY CIRCLES ON PROFILES. AT ALL POINTS BETWEEN DESIGNATED POINTS THE GRADE SHALL BE ESTABLISHED SO AS TO CONFORM TO A STRAIGHT LINE DRAWN BETWEEN SAID DESIGNATED POINTS.
ELEVATIONS ARE IN FEET ABOVE U.S.C. & G.S. SEA LEVEL DATUM OF 1929.
THIS DRAWING AND THE DATA HEREON ARE HEREBY MADE A PART OF THE SPECIFICATIONS.
WORK SHALL BE CONSTRUCTED ACCORDING TO SPECIFICATIONS ON FILE IN THE OFFICE OF THE COUNTY ENGINEER AND SHALL BE PROSECUTED ONLY IN THE PRESENCE OF THE COUNTY ENGINEER.
BEFORE WORK CAN BE STARTED THE CONTRACTOR MUST OBTAIN A PERMIT TO EXCAVATE IN COUNTY STREETS FROM THE L.A. COUNTY ROAD DIST. DISTRICT OFFICE NO. 7 AND PAY A FEE TO THE COUNTY ENGINEER, ROOM 310, 108 W. 2ND STREET SUFFICIENT TO COVER THE COST OF CONSTRUCTION INSPECTION AND RECORD PLANS.
APPROVAL OF THIS PLAN BY THE COUNTY OF LOS ANGELES DOES NOT CONSTITUTE A REPRESENTATION AS TO THE ACCURACY OF THE LOCATION OF OR THE EXISTENCE OR NON-EXISTENCE OF ANY UNDERGROUND UTILITY PIPE, OR STRUCTURE WITHIN THE LIMITS OF THIS PROJECT. THIS NOTE APPLIES TO ALL PAGES.
IF WORK IS TO BE DONE IN A STATE HIGHWAY, A PERMIT MUST BE OBTAINED FROM THE STATE OF CALIFORNIA, DIVISION OF HIGHWAYS, 120 SOUTH SPRING STREET.

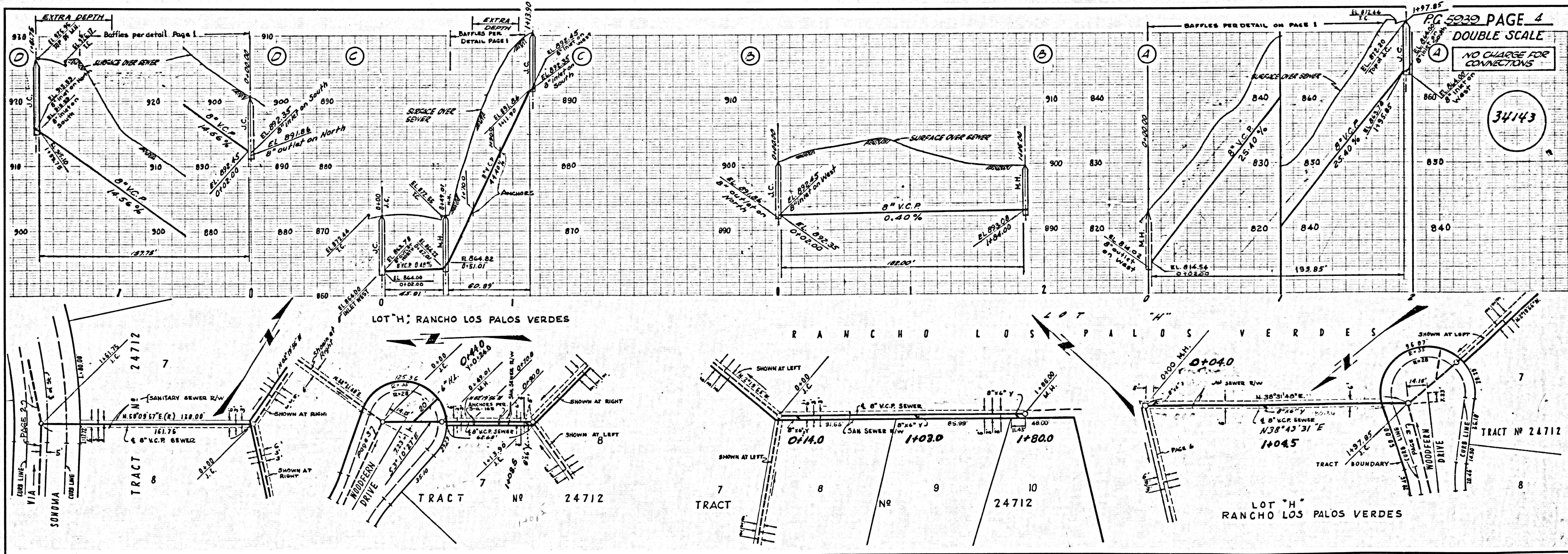
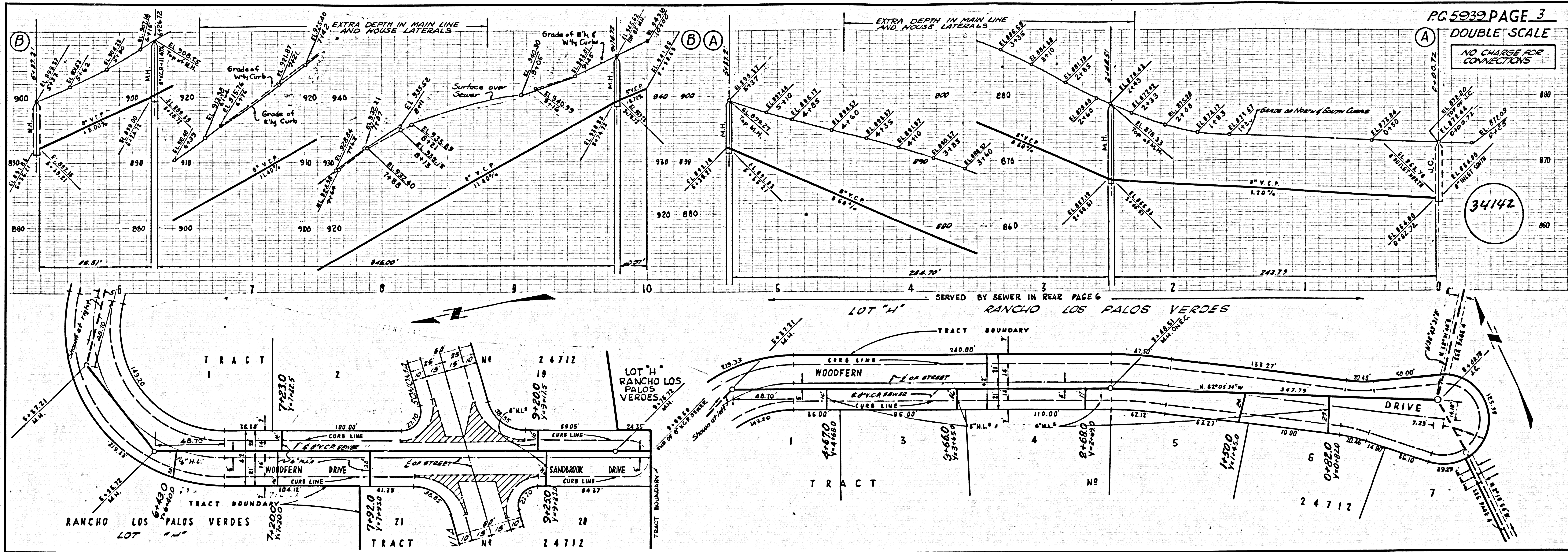
COUNTY OF LOS ANGELES, CALIFORNIA
APPROVED, JOHN A. LAMMIE, COUNTY ENGINEER APPROVED, J.D. BARKER, CHIEF ENGINEER
CO. SAN. DIST. NO. 5 R.C.
BY: *Russ S. Kline* ASST. SANITATION ENGINEER BY: *L. Posthumus* OFFICE ENGINEER
CHECKED BY: *R. K. W. 3-28-62*
OFFICE OF COUNTY ENGINEER, REG. C. E. NO. 2406

NO CONNECTIONS FOR THE DISPOSAL OF INDUSTRIAL WASTES SHALL BE MADE TO SEWERS SHOWN ON THESE DRAWINGS WITHOUT WRITTEN PERMISSION FROM THE CHIEF ENGINEER AND GENERAL MANAGER OF THE COUNTY SANITATION DISTRICTS.



P.C. 5939 PAGE 2
DOUBLE SCALE
NO CHARGE FOR CONNECTIONS

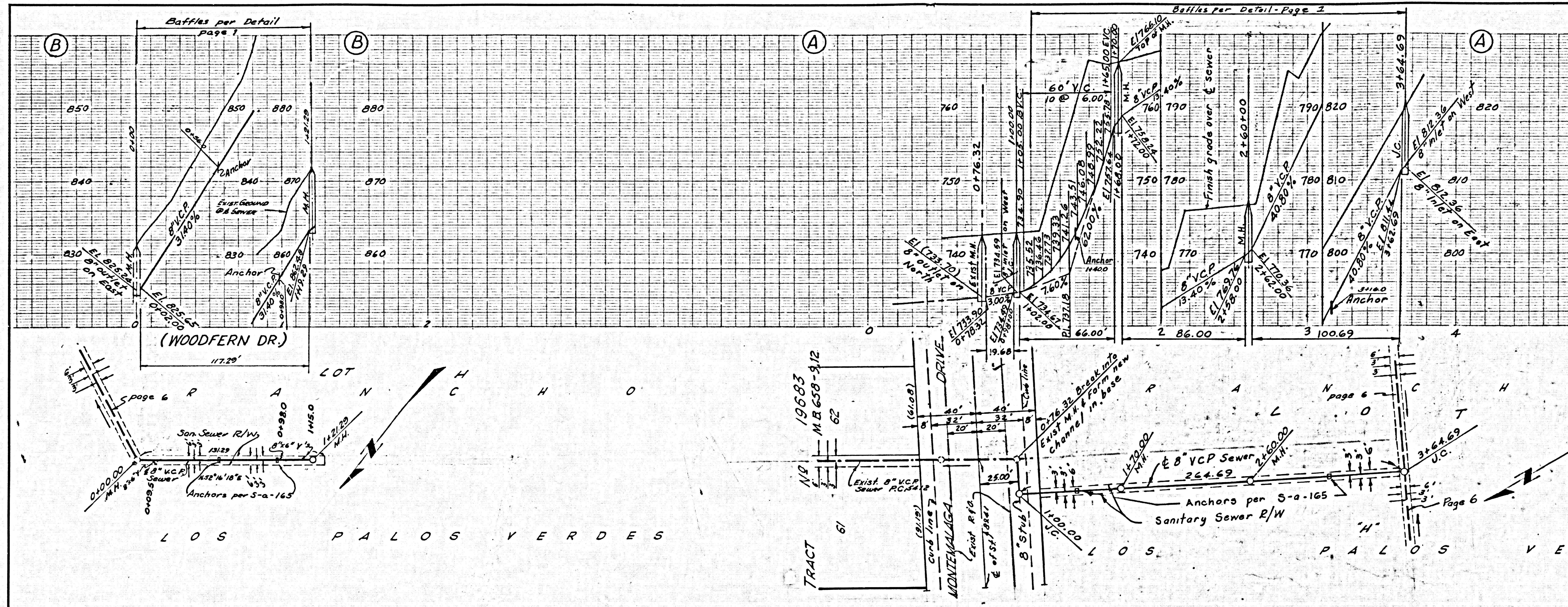
34141



DOUBLE SCALE

NO CHARGE FOR CONNECTIONS

34144



DOUBLE SCALE

NO CHARGE FOR CONNECTIONS

34145

