

B.M. - SY 4042, Elev. 171.836 (1955 Adj.) L.A. County Rd. Dept. Monument in macadam pavement 6' East of W. of Luitwiler Ave. and 18' West of Telephone Pole No. W 5681Y - 23' South of E. of Imperial Highway in casing with cover La Mirada Quad.

LA MIRADA BLDG. DIST. N.O. 4.08

PROFILE ALIGNMENT AND GRADE OF P.C. 5941  
 SANITARY SEWERS PAGE 1  
 TO BE CONSTRUCTED IN

R/W N/O IMPERIAL HIGHWAY  
 PRIVATE CONTRACT NO. 5941

W.S. 34  
 1 SHEET ; 2 PAGES  
 SCALE: VERT. 1" = 4'  
 HORIZ. 1" = 40'  
 JUNE, 1961  
 PREPARED IN THE OFFICES OF  
 L.M. NERENBAUM & ASSOCIATES  
 BY: R.M. Nerenbaum  
 REG. C. E. NO. 6956  
 FOR LEGEND SEE PLAN NO. S-A-64

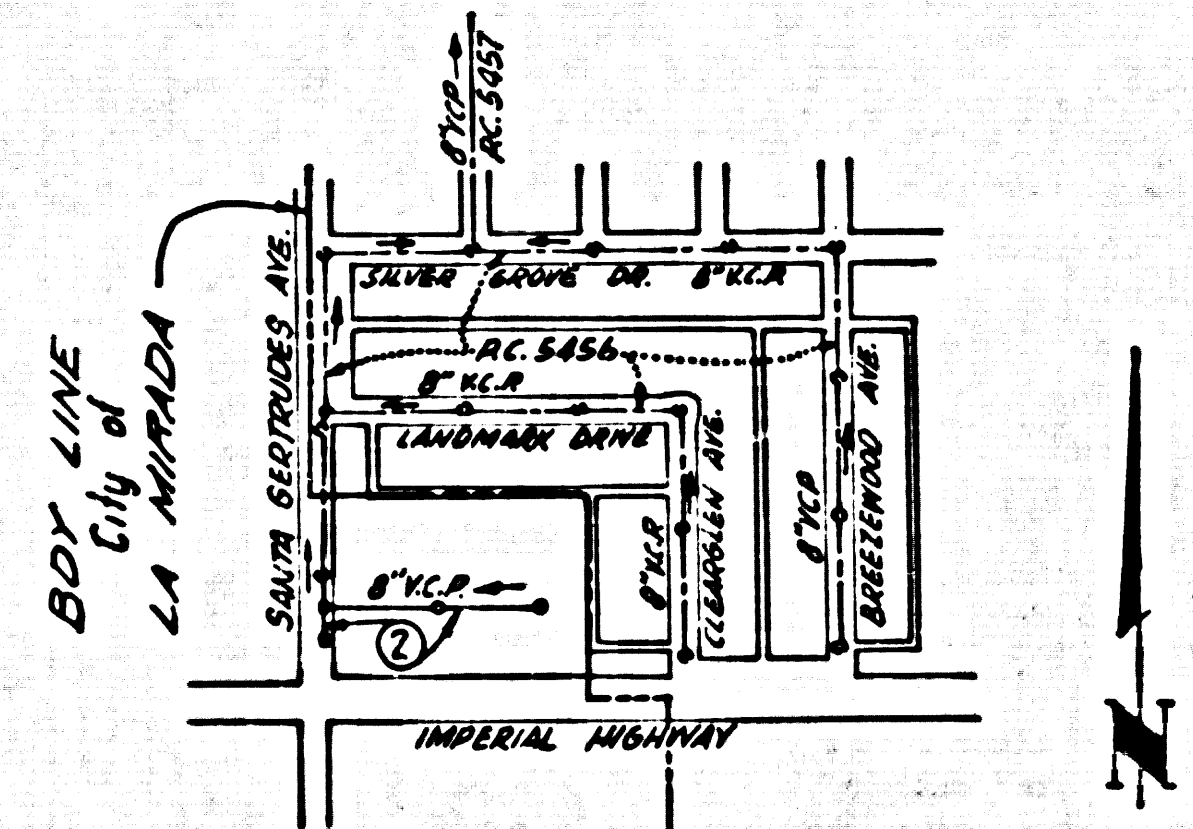
31344

- NOTES:
1. PROVIDE STAKES ON THE PROPERTY LINE OR PROPERTY LINES PRODUCED AT RIGHT ANGLES TO THE SEWER LINE AT THE CENTER LINE OF EACH MANHOLE.
  2. NO REPRESENTATIVE OF THE CITY ENGINEER WILL SURVEY OR LAY OUT ANY PORTION OF THE WORK.
  3. THE OWNER OR HIS AUTHORIZED REPRESENTATIVE SHALL FURNISH THE CITY ENGINEER WITH GRADE SHEETS AND STATIONING FOR ALL HOUSE LATERALS AND Y BRANCHES AND SHALL PROVIDE STAKES FOR THEM AT THEIR PROPER LOCATIONS WITH STATIONING PLAINLY MARKED. ANY CHANGE IN LOCATION SHALL BE REQUESTED IN WRITING BY THE OWNER OR HIS REPRESENTATIVE.
  4. THE PRIVATE ENGINEER SHALL FURNISH THE HOUSE LATERAL DEPTH AT THE PROPERTY LINE BELOW THE TOP OF CURB ELEVATION FOR EACH HOUSE LATERAL ON THE GRADE SHEET.
  5. NO REVISIONS SHALL BE MADE IN THESE PLANS WITHOUT THE APPROVAL OF THE CITY ENGINEER.
  6. USE STANDARD MANHOLE FRAMES AND COVERS, S-117
  7. USE EXTEND STRENGTH PIPE. ALL PIPE IS STANDARD DEPTH, EXCEPT AS NOTED
  8. USE "WEDGELOCK" OR "SEAL-SEAL" FOR ALL V.C.P. JOINTS PER SPECS. SECS. 34 & 41.
  9. RESURFACE ALL TRENCH WITHIN PAVED AREA TO MEET L.A. COUNTY ROAD DEPT. OR CALIF. STATE HIGHWAY REQUIREMENTS IN ACCORDANCE WITH PERMITS.
  10. ENCASE FOUR FEET OF SEWER AT POINTS OF INTERFERENCE WITH POLES, CASE III, S-172.
  11. HOUSE LATERALS TO BE CONSTRUCTED WITH INVERTS AT PROPERTY LINE 6 FEET BELOW CURB GRADE OF GRADE OF SEWER R/W
  12. ALL STRUCTURES SHALL BE BRICK SEWER STRUCTURES, S-104, EXCEPT AS NOTED.
  13. FOR ALLOWABLE LEAKAGE TEST USE FORMULA NO. 1, SPECS. SEC. 54.
  14. MANHOLE TOPS IN UNIMPROVED RIGHTS-OF-WAY TO BE SIX INCHES ABOVE FINISHED GRADE.
  15. THE CONTRACTOR SHALL NOTIFY THE CONSTRUCTION DEPARTMENT DIVISION BY TELEPHONE, MADISON 9-4747, EXT. 81-531, AT LEAST TWENTY-FOUR HOURS BEFORE STARTING ANY WORK UNDER THIS CONTRACT.
  16. STANDARD SPECIFICATIONS DATED OCTOBER 10, 1960, ON FILE IN CITY, APPLY IN THE CONSTRUCTION OF THIS PROJECT.

NOTE:  
 GRADES TO WHICH THIS IMPROVEMENT IS TO BE CONSTRUCTED ARE SHOWN ON PLANS AND PROFILES. GRADE POINTS FOR TOP OF CURBS, CENTER LINE OF STREETS, OR CENTER LINE OF ALLEYS ARE SHOWN BY CIRCLES ON PROFILES AT ALL POINTS BETWEEN DESIGNATED POINTS THE GRADE SHALL BE ESTABLISHED SO AS TO CONFORM TO A STRAIGHT LINE DRAWN BETWEEN SAID DESIGNATED POINTS.  
 ELEVATIONS ARE IN FEET ABOVE U.S.C. & G.S. SEA LEVEL DATUM OF 1929.  
 THIS DRAWING AND THE DATA HEREON ARE HEREBY MADE A PART OF THE SPECIFICATIONS.  
 WORK SHALL BE CONSTRUCTED ACCORDING TO SPECIFICATIONS ON FILE IN THE OFFICE OF THE CITY ENGINEER AND SHALL BE PROSECUTED ONLY IN THE PRESENCE OF THE CITY ENGINEER.  
 BEFORE WORK CAN BE STARTED THE CONTRACTOR MUST OBTAIN A PERMIT TO EXCAVATE IN CITY STREETS FROM THE L.A. COUNTY ROAD DIST. DISTRICT OFFICE NO. 10, AND MAKE A DEPOSIT WITH THE CITY ON 405 1/2 STREET, 10214 ROSECRANS AVENUE, SUFFICIENT TO COVER THE COST OF CONSTRUCTION INSPECTION AND RECORD PLANS.  
 APPROVAL OF THIS PLAN BY THE CITY OF LA MIRADA DOES NOT CONSTITUTE A REPRESENTATION AS TO THE ACCURACY OF THE LOCATION OF OR THE EXISTENCE OR NON-EXISTENCE OF ANY UNDERGROUND UTILITY PIPE, OR STRUCTURE WITHIN THE LIMITS OF THIS PROJECT. THIS NOTE APPLIES TO ALL PAGES.  
 IF WORK IS TO BE DONE IN A STATE HIGHWAY, A PERMIT MUST BE OBTAINED FROM THE STATE OF CALIFORNIA, DIVISION OF HIGHWAYS, 120 SOUTH SPRING STREET.

CITY OF LA MIRADA, CALIFORNIA  
 APPROVED, JOHN A. LAMBIE, CITY ENGINEER APPROVED, C. COMPTON, CHIEF ENGINEER  
 NO. SAN. DIST. NO. 12  
 BY: R.M. Nerenbaum, SANITATION ENGINEER  
 CHECKED BY: S. L. O'NEAL, OFFICE ENGINEER  
 OFFICE OF CITY ENGINEER, REG. C. E. NO. 3486

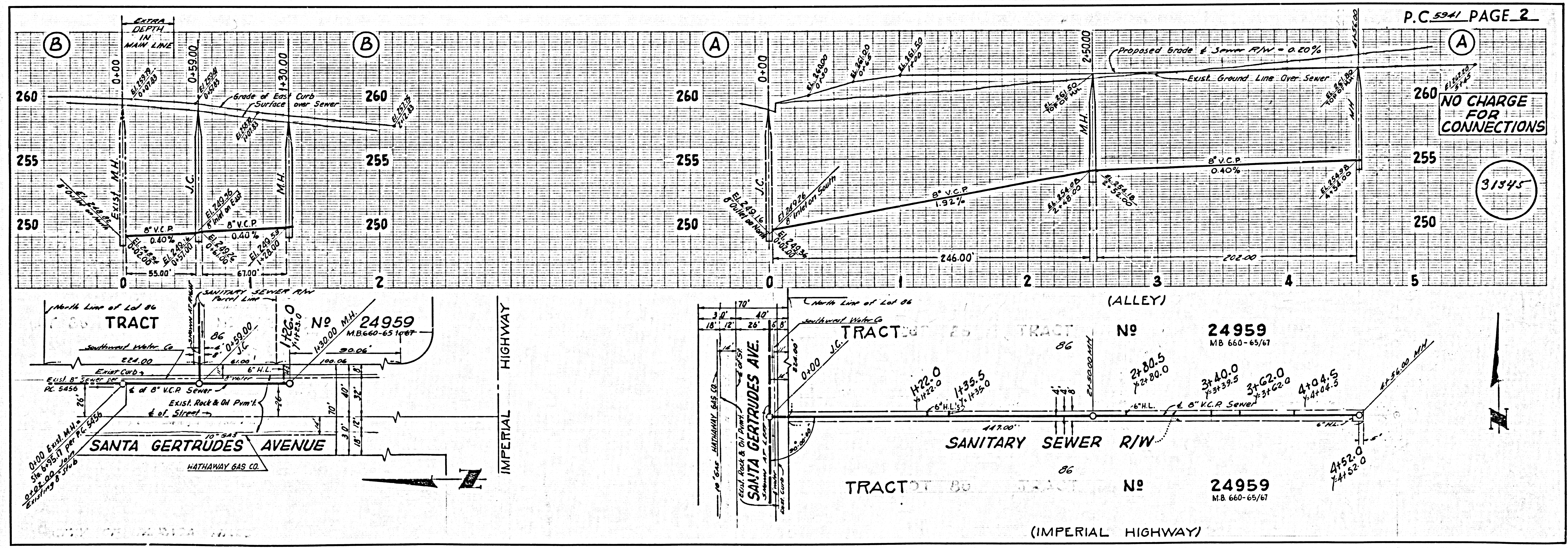
NO CHARGE FOR CONNECTIONS  
 R. M. Nerenbaum U-2261



APPROVED BY: R. A. Moore, INDUSTRIAL WASTE DIVISION

INDEX MAP SCALE 1"=600' P.C. 5941  
 NO CONNECTIONS FOR THE DISPOSAL OF INDUSTRIAL WASTES SHALL BE MADE TO SEWERS SHOWN ON THESE DRAWINGS WITHOUT WRITTEN PERMISSION FROM THE CHIEF ENGINEER AND GENERAL MANAGER OF THE COUNTY SANITATION DISTRICTS.

SUBMITTED BY: C. L. Egan, 11-27-61, LOS ANGELES REGIONAL ENGINEER, REG. C.E. NO. 3871



P.C. 5941 PAGE 2

NO CHARGE FOR CONNECTIONS

31345