

BEACH MARK 35.554 - SPUR FLOOR  
 IN S.E. CORNER OF CONG. W/118 14 HOUSE N.B.  
 6277 - IN GOLDEN WEST 15' WEST OF  
 END OF WALL 2' WEST OF THE E. OF GOLDEN  
 WEST AVE. 20' SOUTH OF THE E. OF CONG.  
 W/118 14 HOUSE N.B. 6277 - HOUSE CORNER MARK

CITY OF TEMPLE CITY BLDG. DIST. NO. 5.08

PROFILE ALIGNMENT AND GRADE OF P.C. 5942  
 SANITARY SEWERS PAGE 1  
 TO BE CONSTRUCTED IN

RIGHT OF WAY  
 WEST OF GOLDEN WEST AVE  
 PRIVATE CONTRACT NO. 5942

W.S. 44

1 SHEETS, 2 PAGES

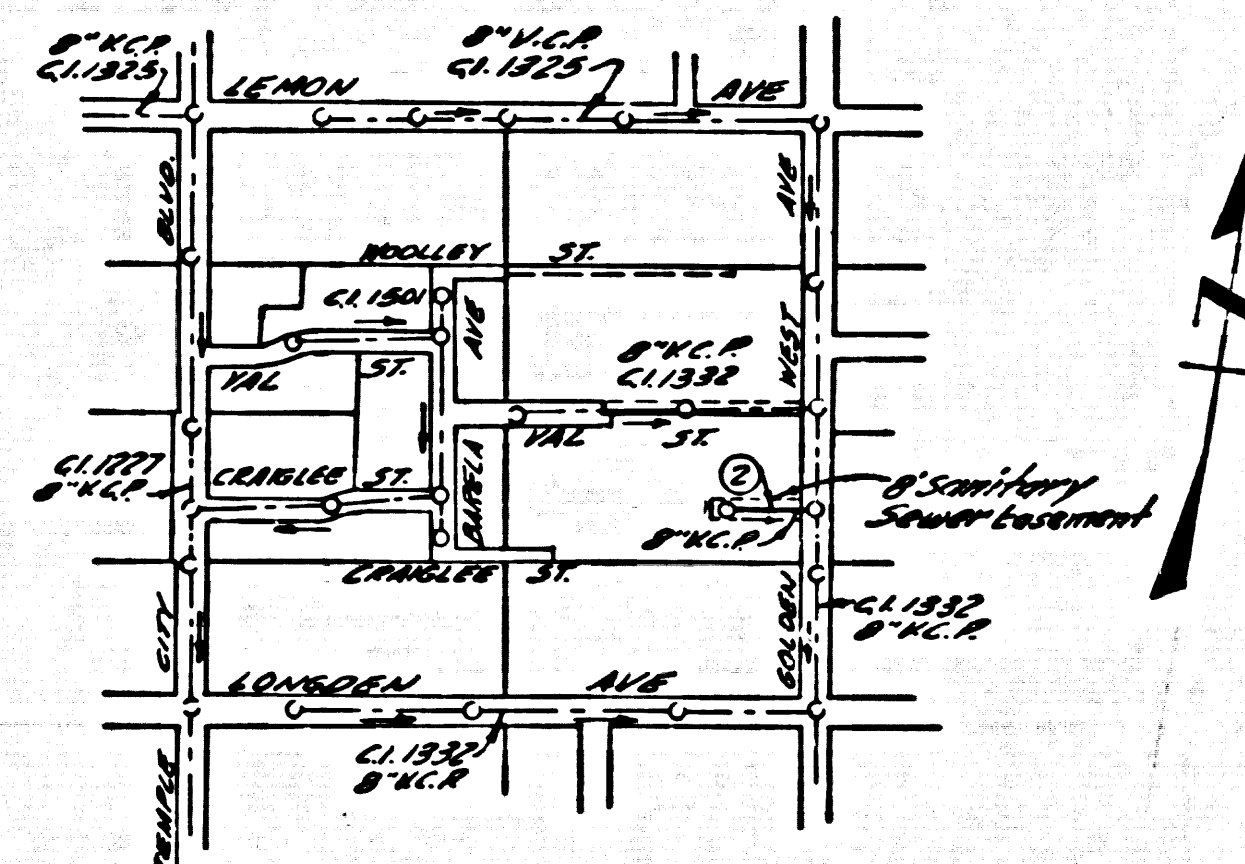
SCALE: VERT. 1" = 4' HORIZ. 1" = 40' JUNE, 1961

PREPARED IN THE OFFICES OF  
 M.W. FINLEY CO.  
 370 WEST 7TH ST.  
 TEMPLE CITY, CALIF.  
 91785

31336

By: Clyde C. Lambie  
 REG. C. E. NO. 6964

FOR LEGEND SEE PLAN NO. S-A-64



INDEX MAP  
 SCALE 1"=600'  
 P.C. 5942

- NOTES:
- PROVIDE STAKES ON THE PROPERTY LINE OR PROPERTY LINES PRODUCED AT RIGHT ANGLES TO THE SEWER LINE AT THE CENTER LINE OF EACH MANHOLE.
  - NO REPRESENTATIVE OF THE CITY ENGINEER WILL SURVEY OR LAYOUT ANY PORTION OF THE WORK.
  - THE OWNER OR HIS AUTHORIZED REPRESENTATIVE SHALL FURNISH THE CITY ENGINEER WITH GRADE SHEETS AND STATIONING FOR ALL HOUSE LATERALS AND T BRANCHES AND SHALL PROVIDE STAKES FOR THEM AT THEIR PROPER LOCATIONS WITH STATIONING PLAINLY MARKED. ANY CHANGE IN LOCATION SHALL BE REQUESTED IN WRITING BY THE OWNER OR HIS REPRESENTATIVE.
  - NO REVISIONS SHALL BE MADE IN THESE PLANS WITHOUT THE APPROVAL OF THE CITY ENGINEER.
  - USE STANDARD MANHOLE FRAMES AND COVERS, S-A-117, A
  - USE EXTRA STRENGTH PIPE. ALL PIPE IS STANDARD DEPTH.
  - USE CEMENT MORTAR OR "WEDGE LOCK OR "SPEED SEAL" FOR ALL K.C.P. JOINTS PER SPEC., SEC. 38-43
  - RESURFACE ALL TRENCH WITHIN PAVED AREA TO MEET L. A. COUNTY ROAD DEPT., OR CALIF. STATE HIGHWAY DEPT. REQUIREMENTS IN ACCORDANCE WITH PERMITS.
  - ENCASE FOUR FEET OF SEWER AT POINTS OF INTERFERENCE WITH POLES, S-A-119.
  - 1" DUCT LATERALS FOR 4" AND 6" MAINS MUST BE MADE OF 1" DUCT PERMITS.
  - ALL STRUCTURES SHALL BE BRICK SEWER STRUCTURES, S-A-104, EXCEPT AS NOTED.
  - FOR ALLOWABLE LEAKAGE TEST USE FORMULA NO. 1 SPEC., SEC. 31.
  - MANHOLE TOPS IN UNIMPROVED RIGHTS-OF-WAY TO BE 6" ABOVE FINISHED GRADE.
  - THE CONTRACTOR SHALL NOTIFY THE CONSTRUCTION DIVISION BY TELEPHONE MADISON 3-4747 EXT. 81551 AT LEAST TWENTY-FOUR HOURS BEFORE STARTING ANY WORK UNDER THIS PROJECT.
  - STANDARD SPECIFICATIONS DATED OCTOBER 25, 1961 APPLY IN THE CONSTRUCTION OF THIS PROJECT.

NO CONNECTIONS FOR THE DISPOSAL OF INDUSTRIAL WASTES SHALL BE MADE TO SEWERS SHOWN ON THESE DRAWINGS WITHOUT WRITTEN PERMISSION FROM THE CHIEF ENGINEER AND GENERAL MANAGER OF THE COUNTY SANITATION DISTRICTS.

NO CHARGE FOR CONNECTIONS  
 Clyde C. Lambie

NOTES:

GRADES TO WHICH THIS IMPROVEMENT IS TO BE CONSTRUCTED ARE SHOWN ON PLANS AND PROFILES. GRADE POINTS FOR TOP OF CURBS, CENTER LINE OF STREETS, OR CENTER LINE OF ALLEYS ARE SHOWN BY CIRCLES ON PROFILES. AT ALL POINTS BETWEEN DESIGNATED POINTS THE GRADE SHALL BE ESTABLISHED SO AS TO CONFORM TO A STRAIGHT LINE DRAWN BETWEEN SAID DESIGNATED POINTS.

ELEVATIONS ARE IN FEET ABOVE U.S.C. & G.S. SEA LEVEL DATUM OF 1929.

THIS DRAWING AND THE DATA HEREON ARE HEREBY MADE A PART OF THE SPECIFICATIONS.

BEFORE WORK CAN BE STARTED, THE CONTRACTOR MUST OBTAIN A PERMIT TO EXCAVATE IN CITY STREETS FROM THE L. A. COUNTY ROAD DEPT., 100 W. 3RD ST. AND MAKE A DEPOSIT WITH THE CITY OF TEMPLE CITY - PAGE #417 - LAST THREE DOLLARS SUFFICIENT TO COVER THE COST OF CONSTRUCTION INSPECTION AND RECORD PLANS.

APPROVAL OF THIS PLAN BY THE CITY OF TEMPLE CITY DOES NOT CONSTITUTE A REPRESENTATION AS TO THE ACCURACY OF THE LOCATION OF OR THE EXISTENCE OR NON-EXISTENCE OF ANY UNDERGROUND UTILITY PIPE, OR STRUCTURE WITHIN THE LIMITS OF THIS PROJECT. THIS NOTE APPLIES TO ALL PAGES.

IF WORK IS TO BE DONE IN A STATE HIGHWAY, A PERMIT MUST BE OBTAINED FROM THE STATE OF CALIFORNIA, DIVISION OF HIGHWAYS, 120 SOUTH SPRING STREET.

CITY OF TEMPLE CITY, CALIFORNIA

APPROVED, JOHN A. LAMBIE, CITY ENGINEER APPROVED, L. D. PHALAN, CHIEF ENGINEER

By: [Signature] SANITATION ENGINEER By: [Signature] OFFICE ENGINEER

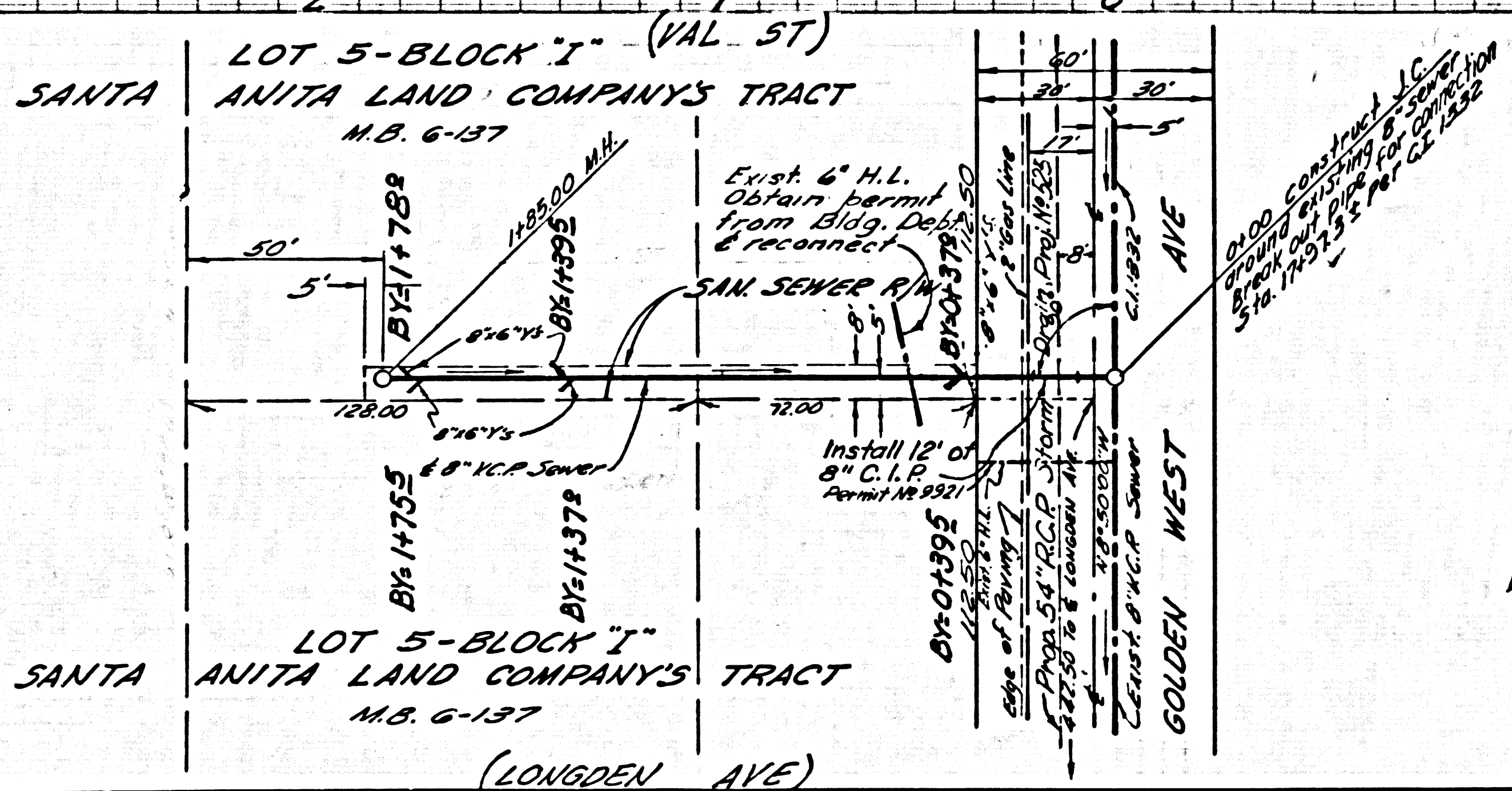
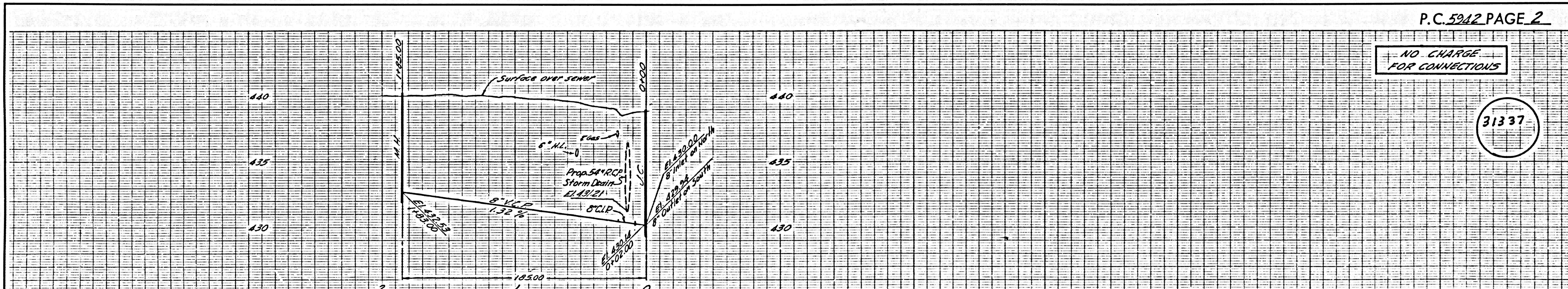
CHECKED BY: [Signature] 12-18-61  
 OFFICE OF CITY ENGINEER, REG. C. E. NO. 2406

Submitted: [Signature] San Gabriel Valley Regional Engineer

P.C. 5942 PAGE 2

NO CHARGE FOR CONNECTIONS

31337



SANTA ANITA LAND COMPANY'S TRACT M.B. 6-137