

NEW WALL BLDG. DIST. NO. 82

PRIVATE CONTRACT NO. 5944

W.S. 62
 9 SHEETS; 18 PAGES
 SCALE: VERT. 1"=4' JULY 1961
 HORIZ. 1"=40'
 PREPARED IN THE OFFICES OF
MCINTIRE & QUIROS INC.
 BY: Clay McIntire 7/20/61
 REG. CIV. NO. 9518
 FOR LEGEND SEE PLAN NO. S-A-64

31500

- NOTES:
1. PROVIDE STAKES ON THE PROPERTY LINE OR PROPERTY LINES PRODUCED AT RIGHT ANGLES TO THE SEWER LINE AT THE CENTER LINE OF EACH MANHOLE.
 2. NO REPRESENTATIVE OF THE COUNTY ENGINEER WILL SURVEY OR LAY OUT ANY PORTION OF THE WORK.
 3. THE OWNER OR HIS AUTHORIZED REPRESENTATIVE SHALL FURNISH THE COUNTY ENGINEER WITH GRADE SHEETS AND STATIONING FOR ALL HOUSE LATERALS AND Y BRANCHES AND SHALL PROVIDE STAKES FOR THEM AT THEIR PROPER LOCATIONS WITH STATIONING PLAINLY MARKED. ANY CHANGE IN LOCATION SHALL BE REQUESTED IN WRITING BY THE OWNER OR HIS REPRESENTATIVE.
 4. THE PRIVATE ENGINEER SHALL FURNISH THE HOUSE LATERAL DEPTH AT THE PROPERTY LINE BELOW THE TOP OF CURB ELEVATION FOR EACH HOUSE LATERAL ON THE GRADE SHEET.
 5. NO REVISIONS SHALL BE MADE IN THESE PLANS WITHOUT THE APPROVAL OF THE COUNTY ENGINEER.
 6. USE STANDARD MANHOLE FRAMES AND COVERS, S-111, EXCEPT AS NOTED.
 7. USE STANDARD STRENGTH PIPE EXCEPT AS NOTED.
 8. USE "WEDGE-LOCK" OR "SPEED-SEAL" FOR ALL Y.C.P. JOINTS PER SPECS. SECS. 14 & 48.
 9. RESURFACE ALL TRENCH WITHIN PAVED AREA TO MEET L.A. COUNTY ROAD DEPT. OR CALIF. STATE HIGHWAY REQUIREMENTS IN ACCORDANCE WITH PERMITS.
 10. ENCASE FOUR FEET OF SEWER AT POINTS OF INTERFERENCE WITH POLES, CASE III, S-172.
 11. HOUSE LATERALS TO BE CONSTRUCTED WITH INVERTS AT PROPERTY LINE 6 FEET BELOW CURB GRADE EXCEPT AS NOTED.
 12. ALL STRUCTURES SHALL BE BRICK SEWER STRUCTURES, S-104, EXCEPT AS NOTED.
 13. FOR ALLOWABLE LEAKAGE TEST USE FORMULA NO. 1, SPECS. SEC. 54.
 14. MANHOLE TOPS IN UNIMPROVED RIGHTS-OF-WAY TO BE SIX INCHES ABOVE FINISHED GRADE.
 15. EXCEPT AS NOTED BY TELEPHONE, MADISON 8-4747.
 16. THE CONTRACTOR SHALL NOTIFY THE CONSTRUCTION DEPARTMENT BEFORE STARTING ANY WORK UNDER THIS CONTRACT.
 17. THE CONTRACTOR SHALL SATISFY HIMSELF OF ALL SUBSTRUCTURES AND SHALL BE RESPONSIBLE FOR THEIR LOCATION AND MAINTENANCE.
 18. STANDARD SPECIFICATIONS DATED OCT. 10, 1960 APPLY IN CONSTRUCTION OF THIS PROJECT.

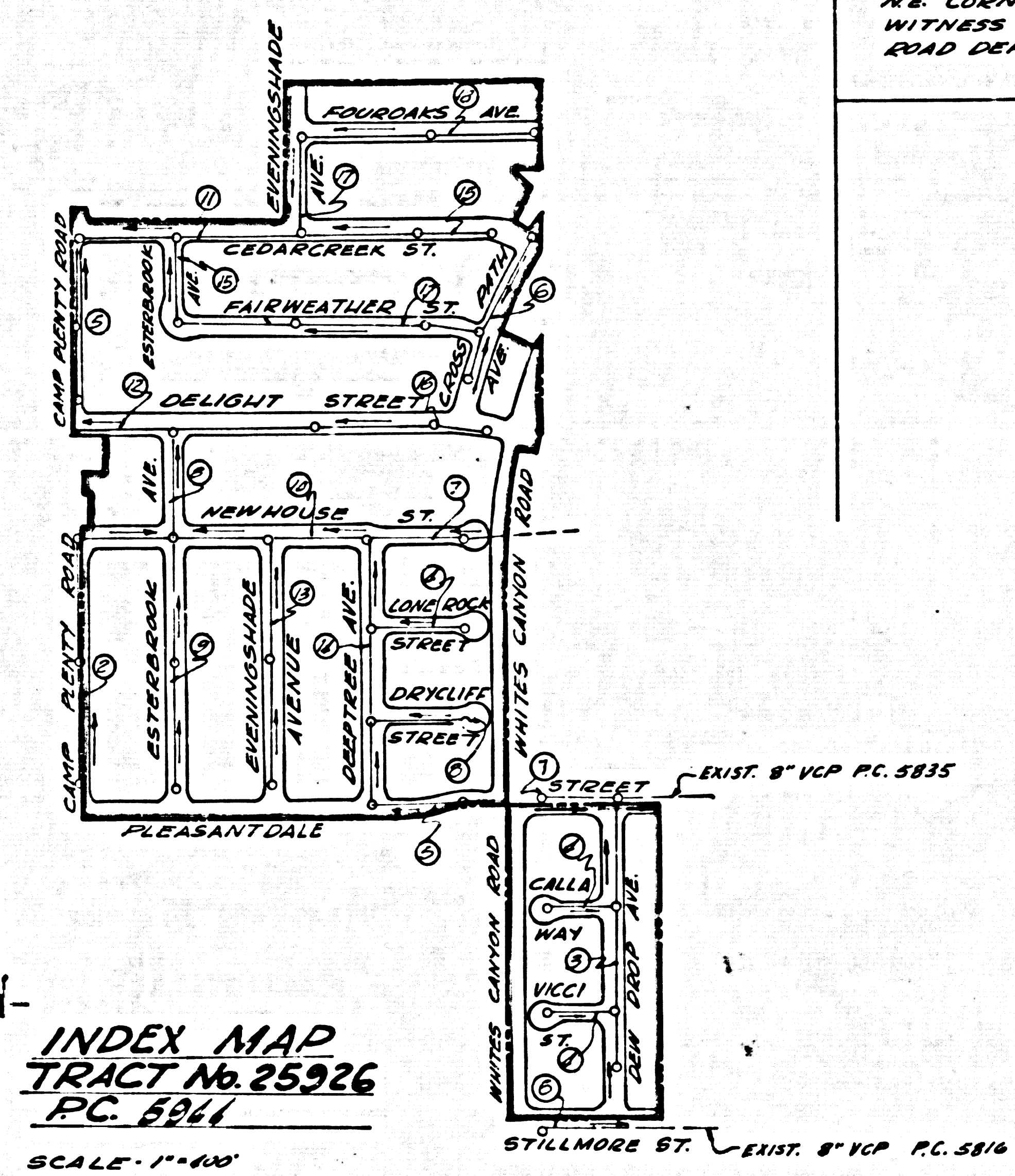
NOTE:
 GRADES TO WHICH THIS IMPROVEMENT IS TO BE CONSTRUCTED ARE SHOWN ON PLANS AND PROFILES. GRADE POINTS FOR TOP OF CURBS, CENTER LINE OF STREETS, OR CENTER LINE OF ALLEYS ARE SHOWN BY CIRCLES ON PROFILES. AT ALL POINTS BETWEEN DESIGNATED POINTS THE GRADE SHALL BE ESTABLISHED SO AS TO CONFORM TO A STRAIGHT LINE DRAWN BETWEEN SAID DESIGNATED POINTS.
 ELEVATIONS ARE IN FEET ABOVE U.S.C. & G.S. SEA LEVEL DATUM OF 1929.
 THIS DRAWING AND THE DATA HEREON ARE HEREBY MADE A PART OF THE SPECIFICATIONS OF THE COUNTY ENGINEER AND SHALL BE PROSECUTED ONLY IN THE PRESENCE OF THE COUNTY ENGINEER.
 BEFORE WORK CAN BE STARTED, THE CONTRACTOR MUST OBTAIN A PERMIT TO EXCAVATE IN COUNTY STREETS FROM THE L.A. COUNTY ROAD DEPT., DISTRICT OFFICE NO. 100, AND PAY A FEE TO THE COUNTY ENGINEER ROOM 310, 100 WEST SECOND STREET, SUFFICIENT TO COVER THE COST OF CONSTRUCTION INSPECTION AND RECORD PLANS.
 APPROVAL OF THIS PLAN BY THE COUNTY OF LOS ANGELES DOES NOT CONSTITUTE A REPRESENTATION AS TO THE ACCURACY OF THE LOCATION OR NON-EXISTENCE OF ANY UNDERGROUND UTILITY PIPE, OR STRUCTURE WITHIN THE LIMITS OF THIS PROJECT. THIS NOTE APPLIES TO ALL PAGES.
 IF WORK IS TO BE DONE IN A STATE HIGHWAY, A PERMIT MUST BE OBTAINED FROM THE STATE OF CALIFORNIA, DIVISION OF HIGHWAYS, 120 SOUTH SPRING STREET.

COUNTY OF LOS ANGELES, CALIFORNIA
 APPROVED, JOHN A. LAMBIE, COUNTY ENGINEER APPROVED, C.R. COMPTON, CHIEF ENGINEER
 BY: C.E. [Signature] BY: [Signature]
 ASST. SANITATION ENGINEER OFFICE ENGINEER
 CHECKED BY: [Signature]
 OFFICE OF COUNTY ENGINEER, REG. C. & NO. 9406
 RECOMMENDED H.M. Dick 6/27/61
 ANTELOPE VALLEY REGIONAL ENGINEER

ISSUE NO PERMITS UNTIL
 CONSTRUCTION IS COMPLETED AND
 TREATMENT PLANT IS OPERATIONAL
 WITH SANITATION DIVISION
 PERMITS TO ISSUANCE OF
 PERMITS.

NO CHARGE FOR CONNECTIONS
Minway Holst Aug 8, 1961

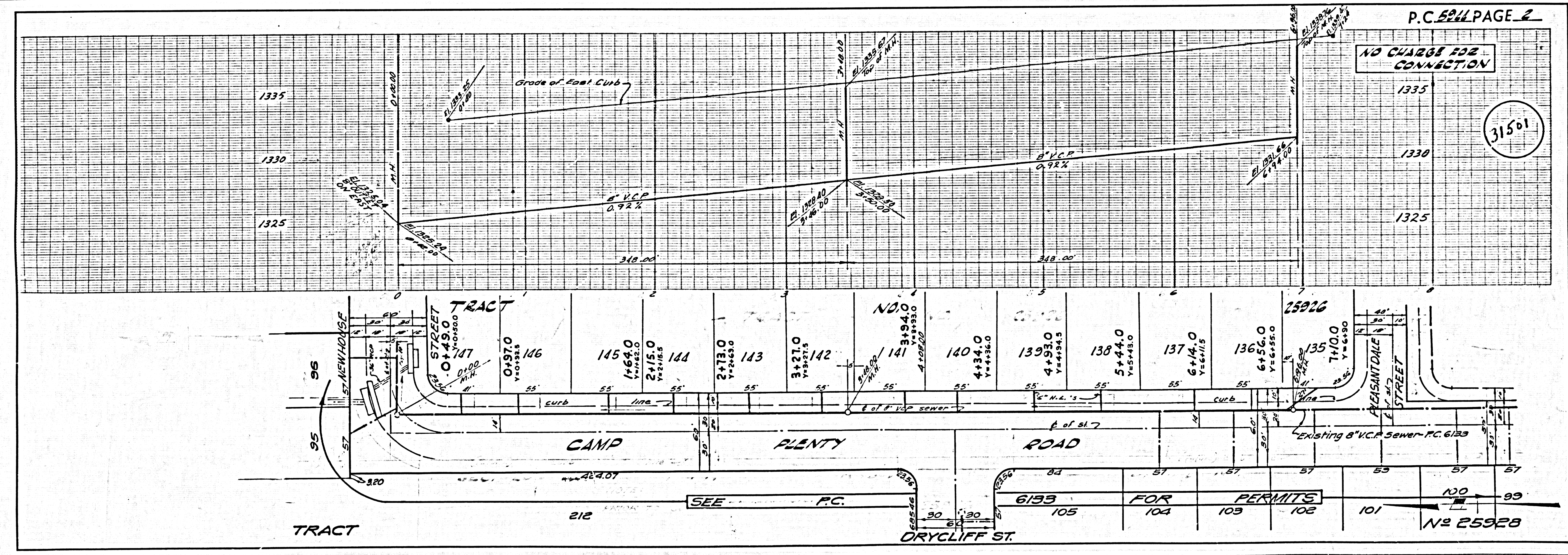
870 U.S.C. & G.S. BRASS DISC SET IN A CONCRETE MON. & STAMPED D-407-1955, LOCATED 2.83 MILE NW OF INTERSECT OF CAMP PLENTY ROAD AND A PAVED ROAD LEADING TO THE G.S. RANCH AIRPORT AT N.E. CORNER OF INTERSECTION AND NEXT TO A WHITE WITNESS POST. ROAD DEPT. ELEVATION = 1344.482



INDEX MAP
 TRACT No. 25926
 PC. 5944
 SCALE: 1"=400'
 NOTE: FIGURES IN CIRCLES INDICATE SHEET NUMBERS.

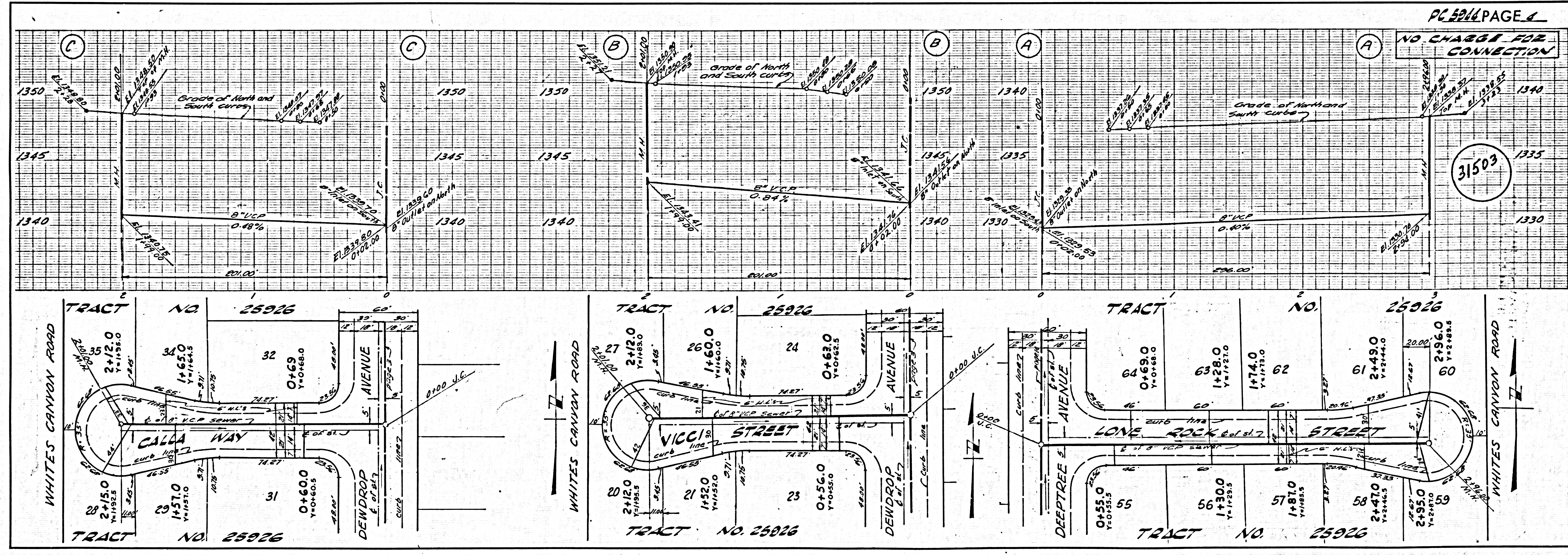
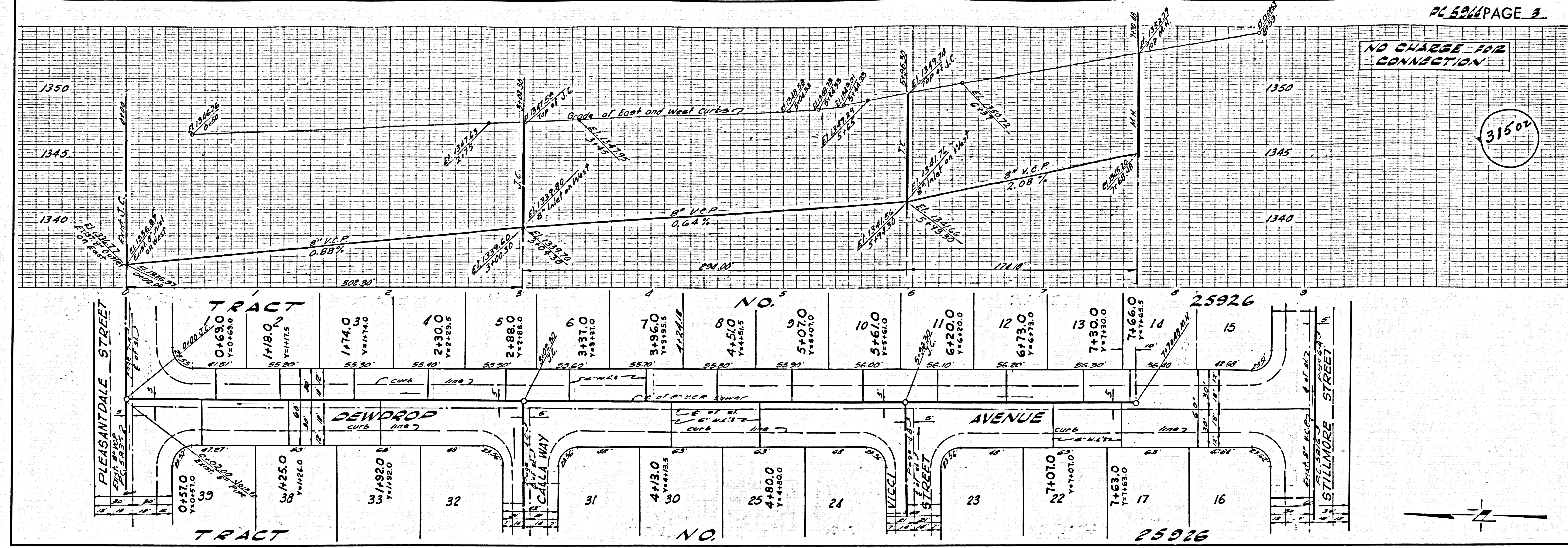
CONNECTIONS FOR THE DISPOSAL OF INDUSTRIAL WASTES SHALL BE MADE TO SEWERS SHOWN ON THESE DRAWINGS WITHOUT WRITTEN PERMISSION FROM THE CHIEF ENGINEER AND GENERAL MANAGER OF THE COUNTY SANITATION DISTRICTS.

REVISION APPROVED: H.M. Dick 7/26/61
 Change in Road & Sewer Grades - Page 16A & Page 18.

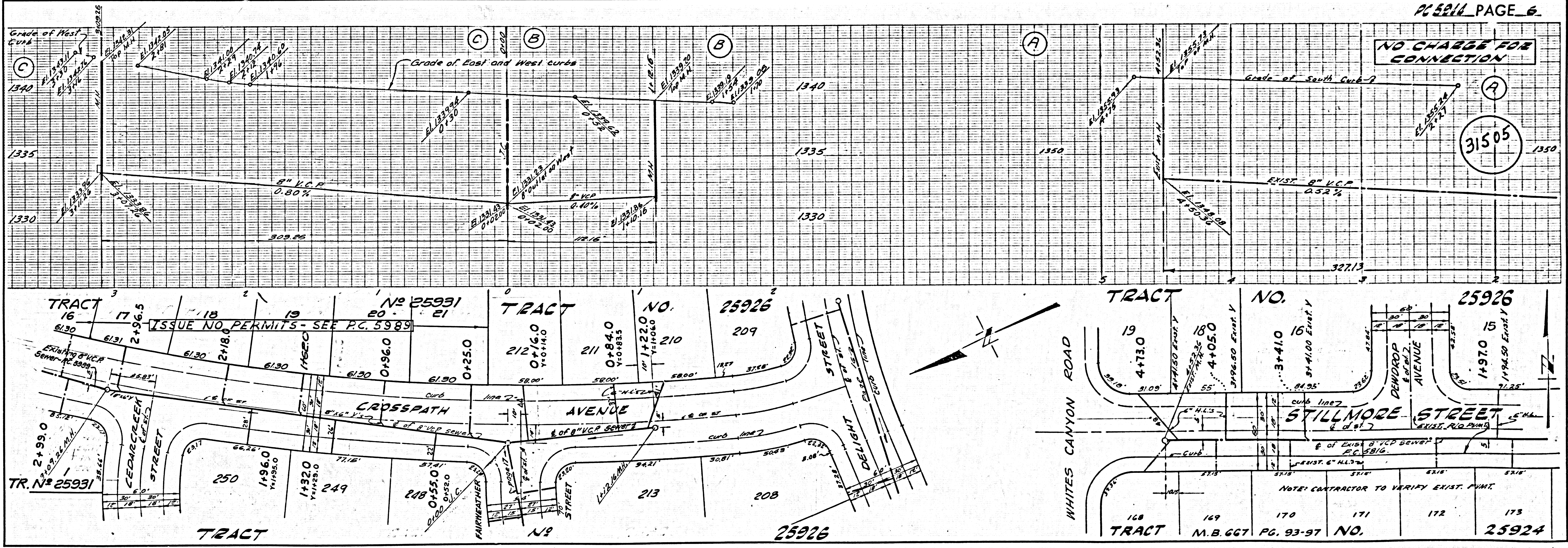
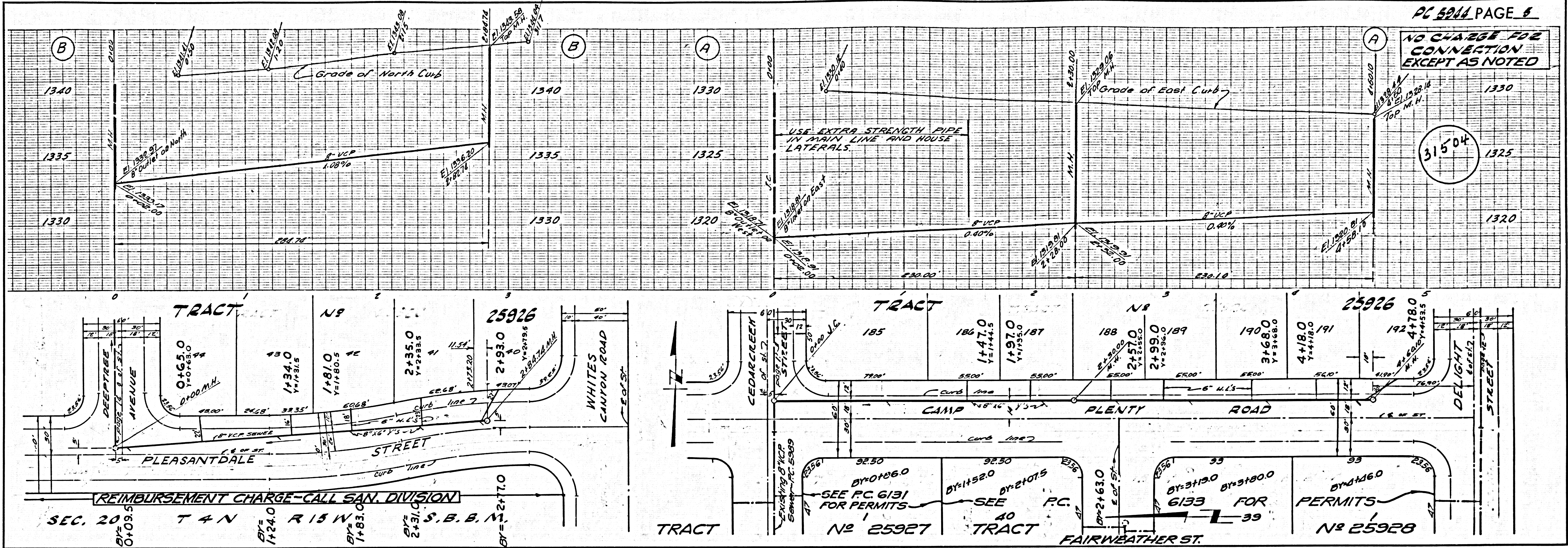


NO CHARGE FOR CONNECTION

31501

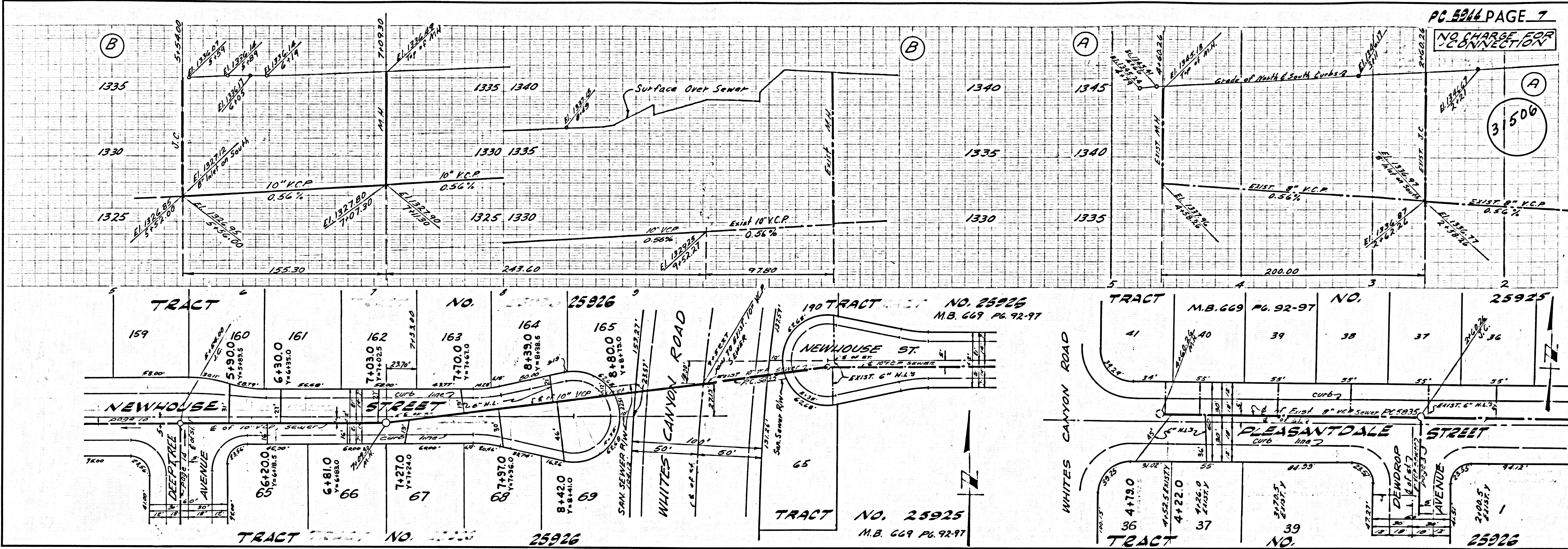


31502
31503



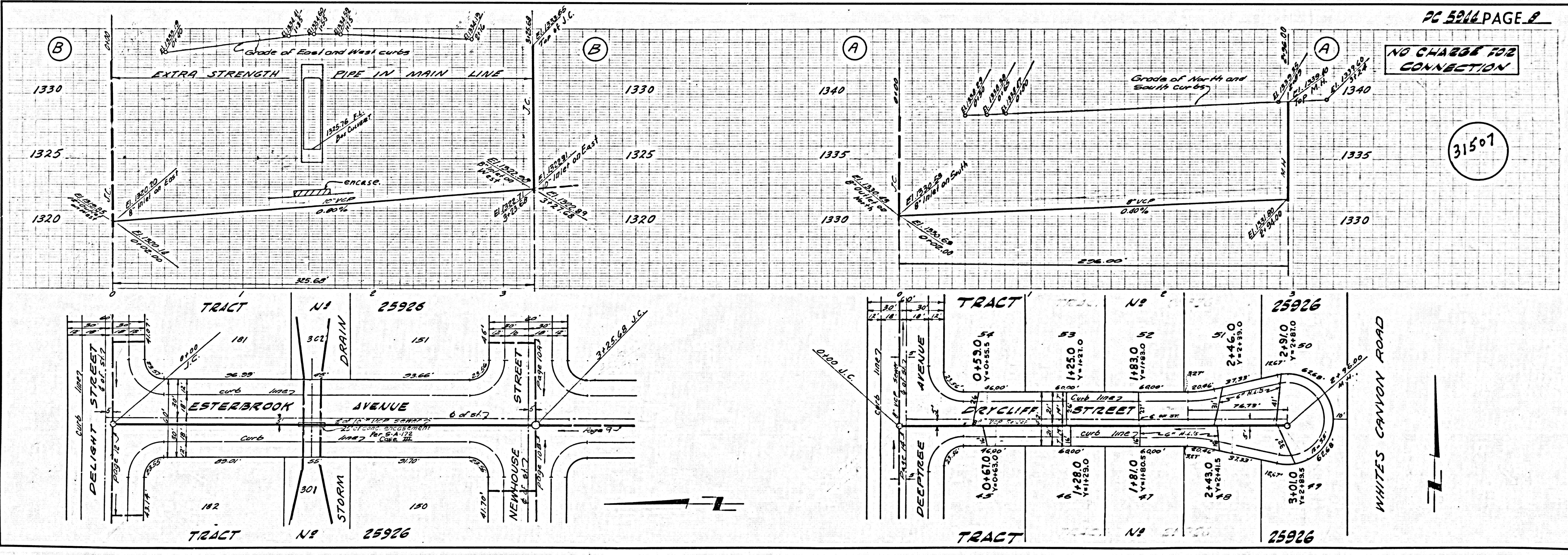
NO CHARGE FOR CONNECTION

31506



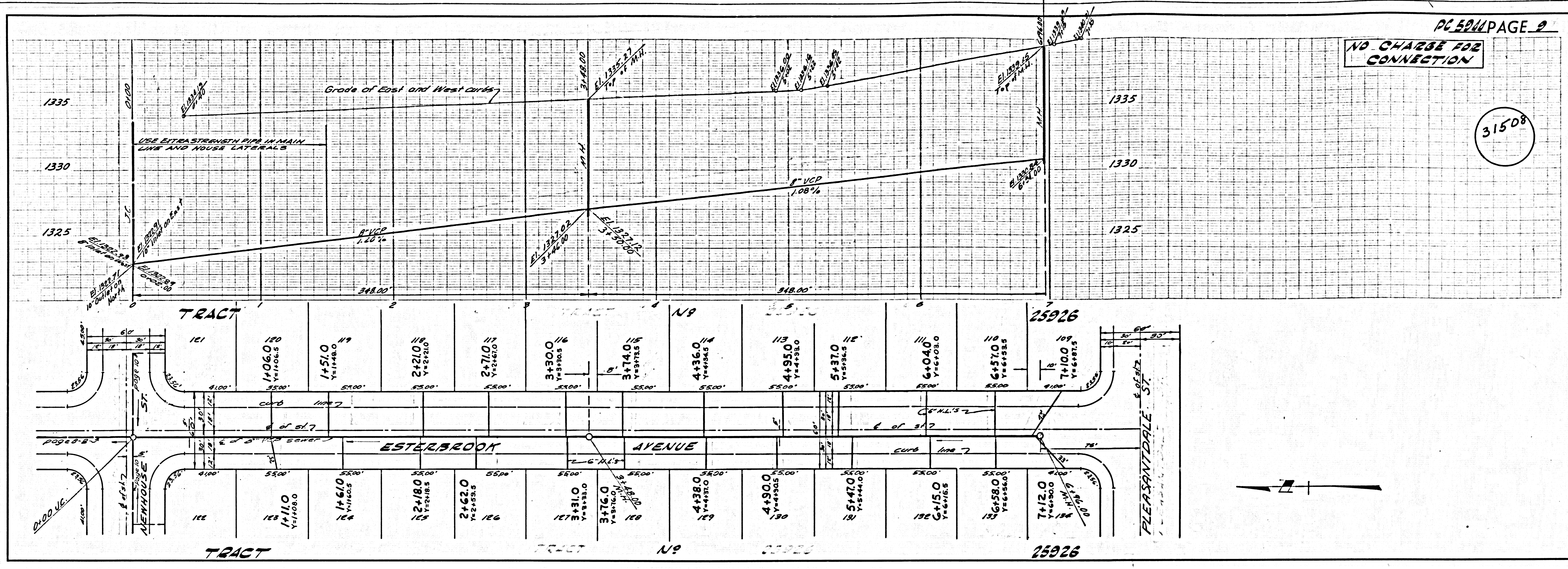
NO CHARGE FOR CONNECTION

31507



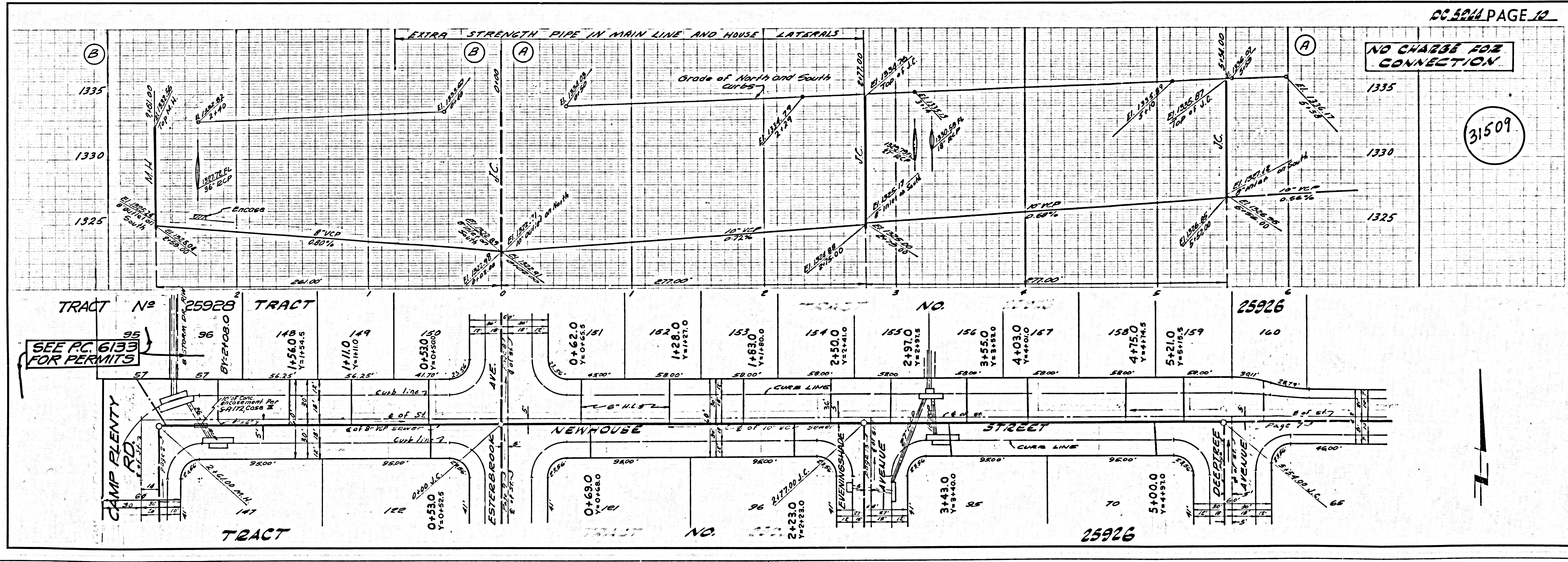
NO CHARGE FOR CONNECTION

31508



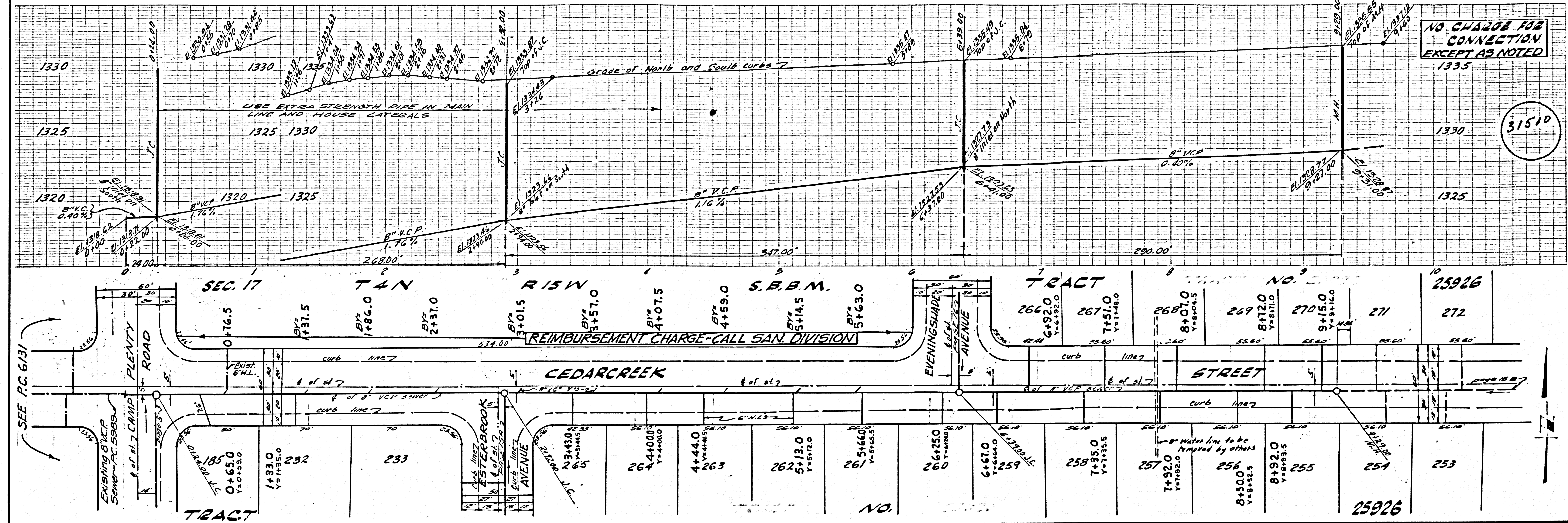
NO CHARGE FOR CONNECTION

31509



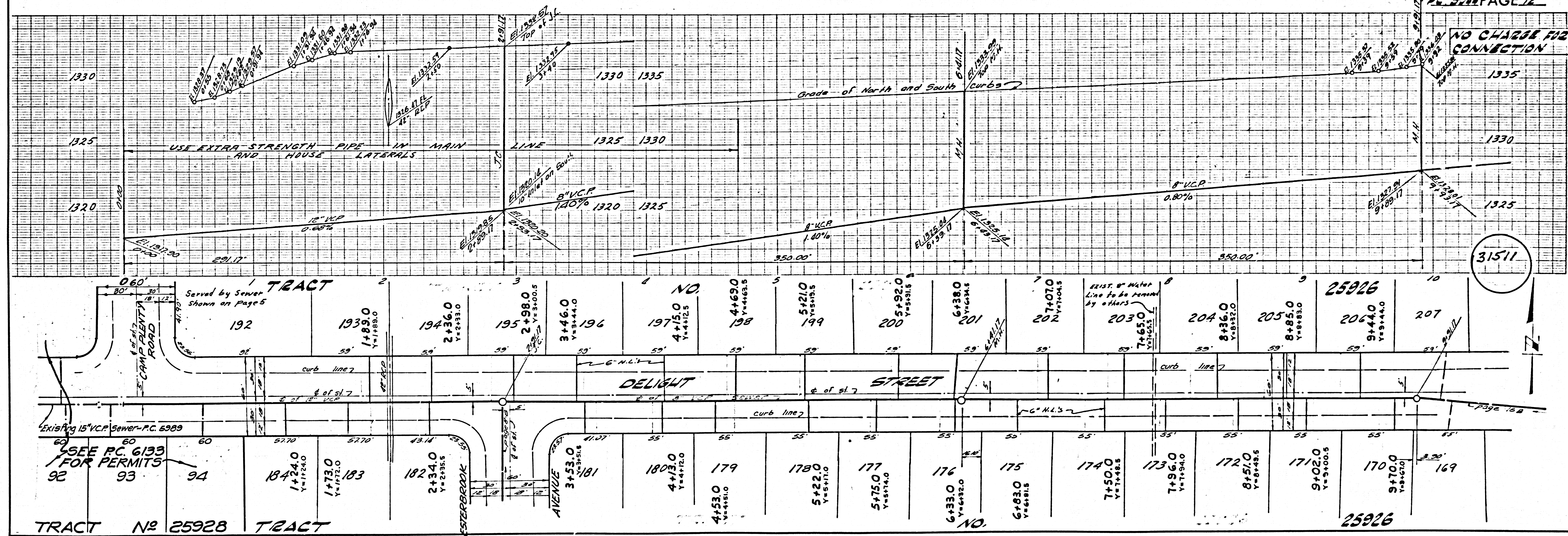
NO CHARGE FOR CONNECTION EXCEPT AS NOTED

31510



NO CHARGE FOR CONNECTION

31511

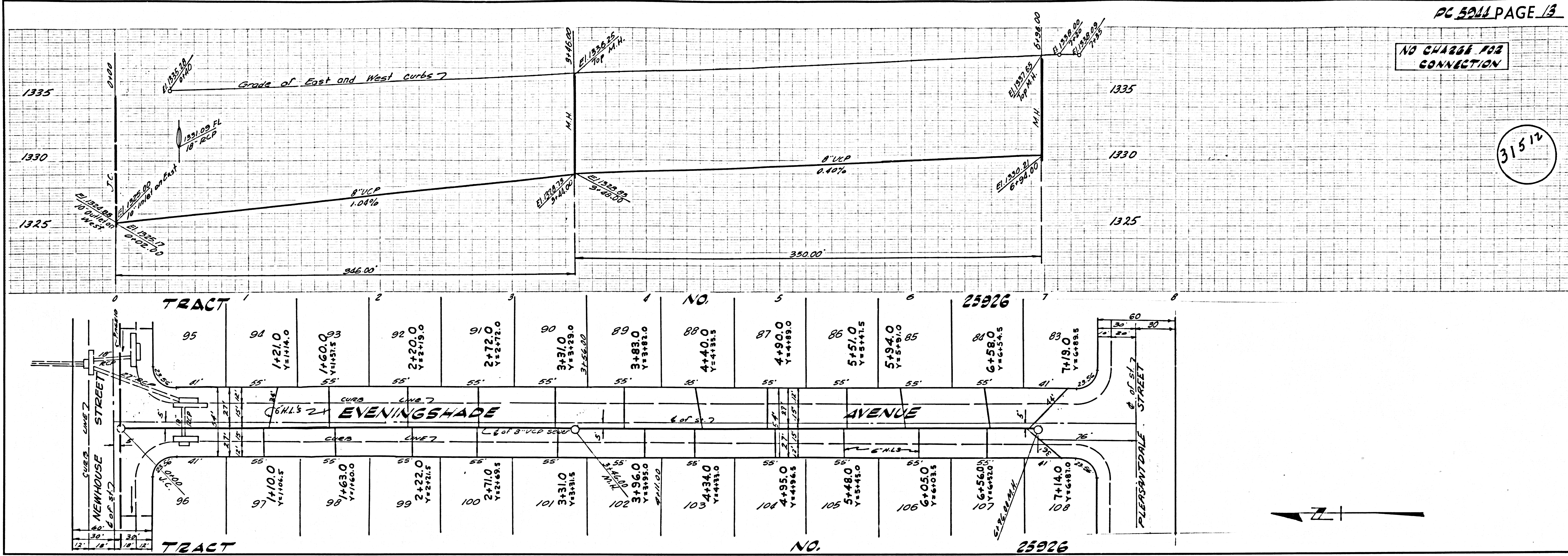


15701 5355

SEE PC 6133 FOR PERMITS

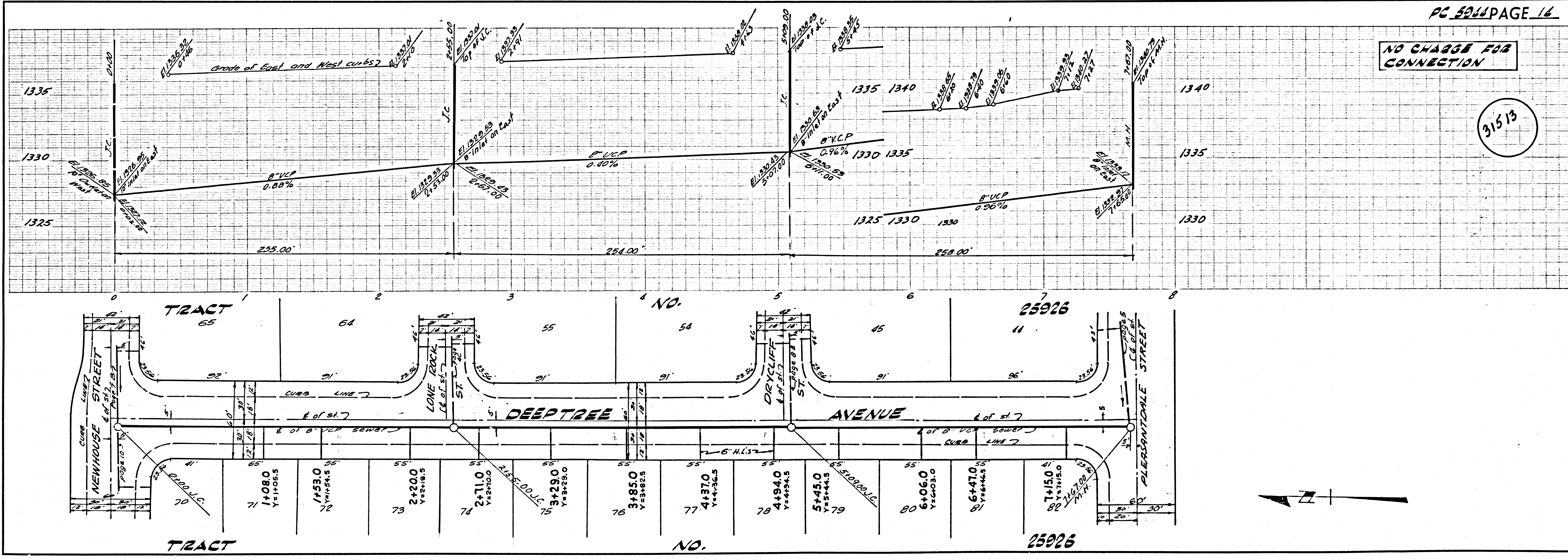
NO CHARGE FOR CONNECTION

31512



NO CHARGE FOR CONNECTION

31513

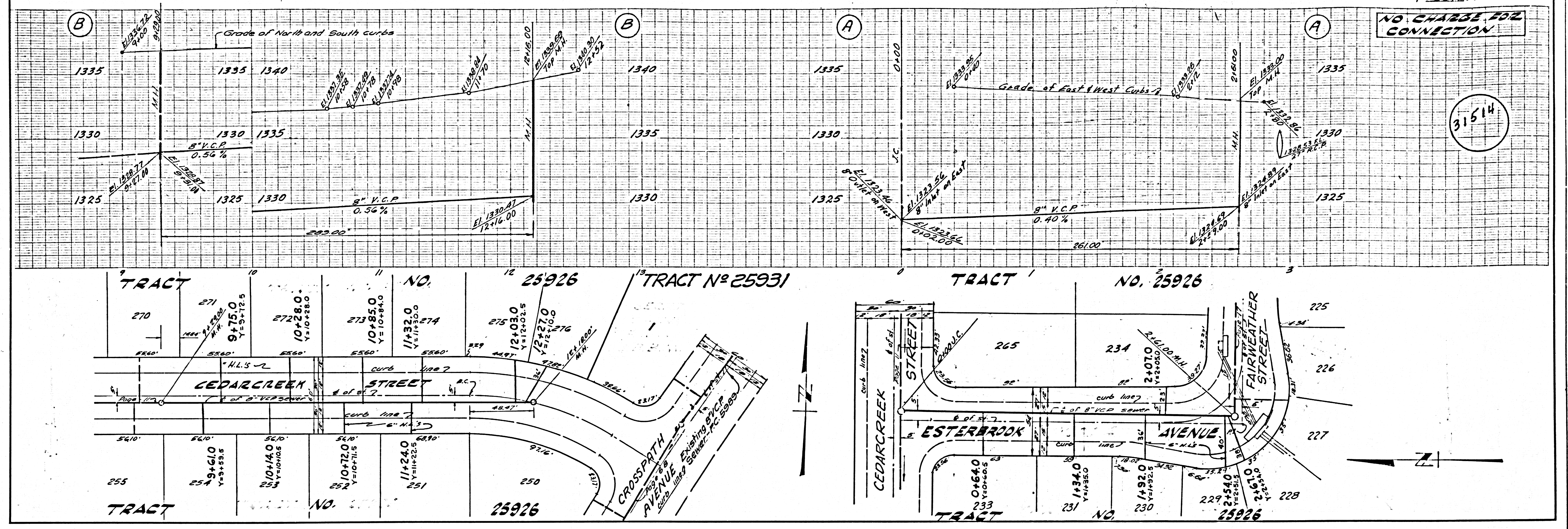


DEVELOPER OR CONSULTING ENGINEER
QUALIFIED FOR APPLICABLE
PROVISIONS OF THE

25926 EAST 25926

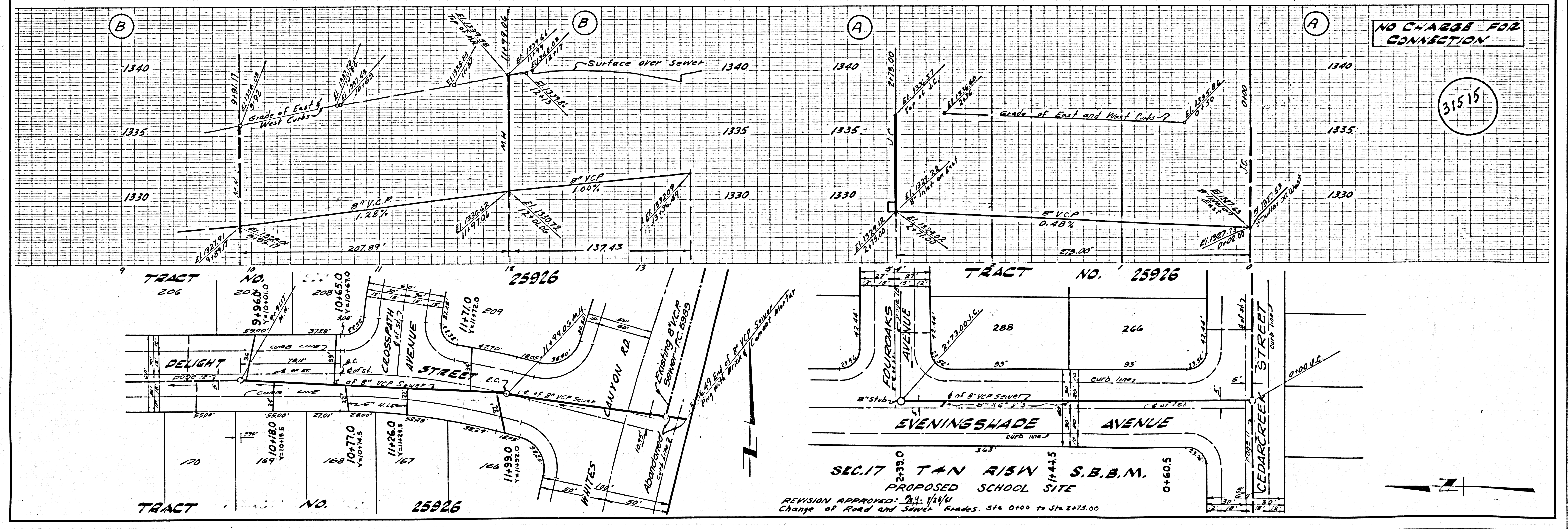
NO CHARGE FOR CONNECTION

31514



NO CHARGE FOR CONNECTION

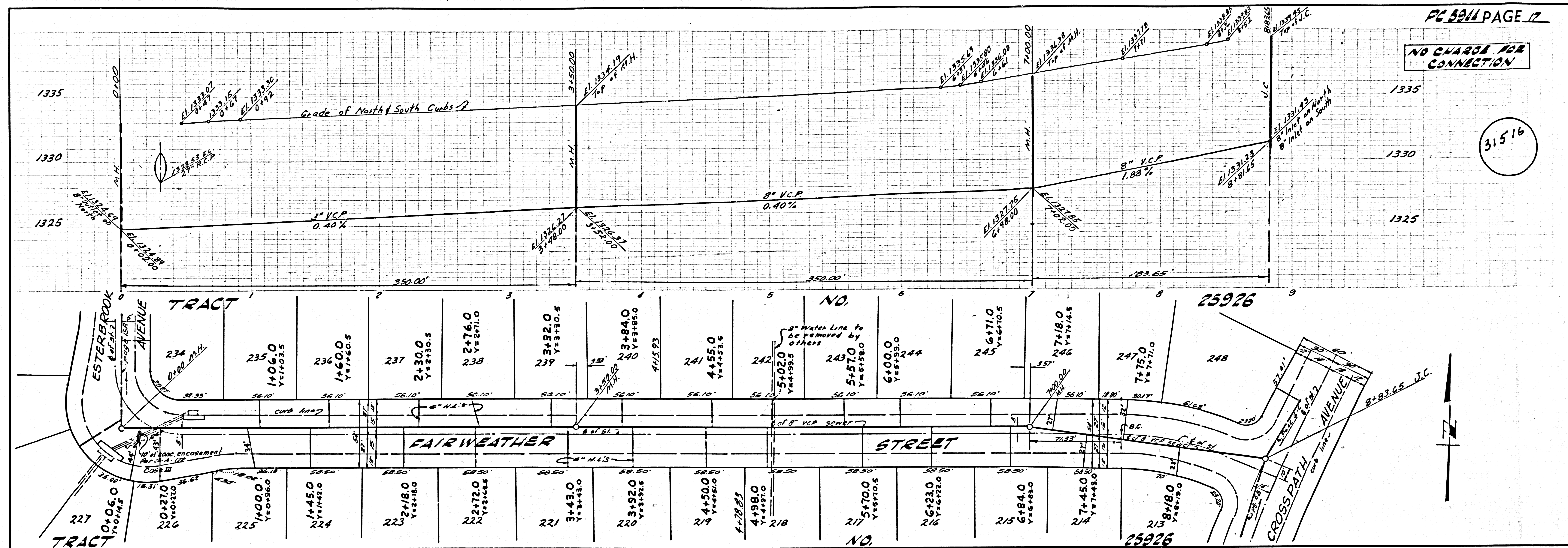
31515



SEC. 17 TAN RISE S.B.B.M. 144.5
 PROPOSED SCHOOL SITE
 REVISION APPROVED: M. V. V. V. V.
 Change of Road and Sewer Grades. STA 0+00 TO STA 2+75.00

NO CHARGE FOR CONNECTION

31516



NO CHARGE FOR CONNECTION

31517

