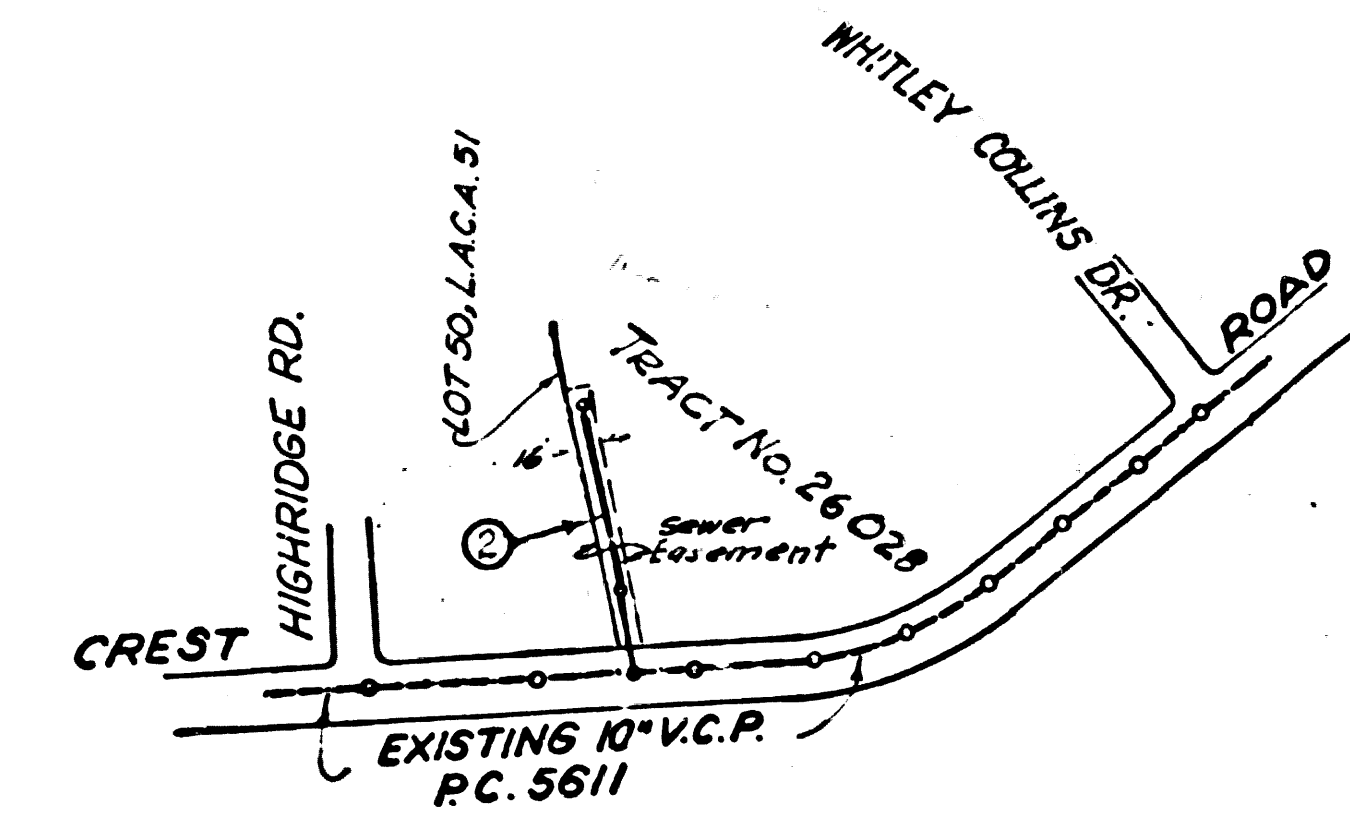


BENCH MARK
 County Surveyor B.M. L.S.C. 6.5 Standard Disc
 Stamped Q 796-1946 Set Flush With Ground 45.2'
 N. of Centerline of Palos Verdes Drive North 47.4'
 East of E. of Narbonne Avenue El = 355.518'



INDEX MAP
 R.C. 5947
 SCALE 1"=600'

NO CHARGE FOR CONNECTIONS
 L. Curtis M-12-61

Approved *Joe P. Knight* 10-19-61
 Industrial Waste Division

**DOUBLE SCALE
 LOMITA BLDG. DIST. NO. 12**

PROFILE ALIGNMENT AND GRADE OF **P.C. 5947**
SANITARY SEWERS PAGE **1**
 TO BE CONSTRUCTED IN **J.N. 0356.36**

RIGHT OF WAY NORTH OF CREST ROAD
PRIVATE CONTRACT NO. 5947

W.S. 27
 1 SHEET OF 2 PAGES
 SCALE: VERT. 1"=8' HORIZ. 1"=40'
 JUNE, 1961
 PREPARED IN THE OFFICES OF

31248

By: *Charles C. Miller*
 RFG. C. E. NO. 122
 FOR LEGEND SEE PLAN NO. S-A-64

NOTE:
 GRADES TO WHICH THIS IMPROVEMENT IS TO BE CONSTRUCTED ARE SHOWN ON PLANS AND PROFILES. GRADE POINTS FOR TOP OF CURBS, CENTER LINE OF STREETS, OR CENTER LINE OF ALLEYS ARE SHOWN BY CIRCLES ON PROFILES. AT ALL POINTS BETWEEN DESIGNATED POINTS THE GRADE SHALL BE ESTABLISHED SO AS TO CONFORM TO A STRAIGHT LINE DRAWN BETWEEN SAID DESIGNATED POINTS.
 ELEVATIONS ARE IN FEET ABOVE U.S.C. & G.S. SEA LEVEL DATUM OF 1929.
 THIS DRAWING AND THE DATA HEREON ARE HEREBY MADE A PART OF THE SPECIFICATIONS.
 WORK SHALL BE CONSTRUCTED ACCORDING TO SPECIFICATIONS ON FILE IN THE OFFICE OF THE COUNTY ENGINEER AND SHALL BE PROSECUTED ONLY IN THE PRESENCE OF THE COUNTY ENGINEER.
 BEFORE WORK CAN BE STARTED, THE CONTRACTOR MUST OBTAIN A PERMIT TO EXCAVATE IN COUNTY STREETS FROM THE L. A. COUNTY ROAD DEPT., DISTRICT OFFICE NO. 13, AND PAY A FEE TO THE COUNTY ENGINEER ROOM 310, COUNTY ENGINEERING BLDG., OR 810 P.O. BOX 100, SUFFICIENT TO COVER THE COST OF CONSTRUCTION INSPECTION AND RECORD PLANS.
 APPROVAL OF THIS PLAN BY THE COUNTY OF LOS ANGELES DOES NOT CONSTITUTE A REPRESENTATION AS TO THE ACCURACY OF THE LOCATION OF OR THE EXISTENCE OR NON-EXISTENCE OF ANY UNDERGROUND UTILITY PIPE, OR STRUCTURE WITHIN THE LIMITS OF THIS PROJECT. THIS NOTE APPLIES TO ALL PAGES.
 IF WORK IS TO BE DONE IN A STATE HIGHWAY, A PERMIT MUST BE OBTAINED FROM THE STATE OF CALIFORNIA, DIVISION OF HIGHWAYS, 120 SOUTH SPRING STREET.

COUNTY OF LOS ANGELES, CALIFORNIA
 APPROVED, JOHN A. LAMBIE, COUNTY ENGINEER APPROVED, J.B. MANNING, CHIEF ENGINEER
 DO. SAN. DIST. NO. 5
 BY: *John A. Lambie* BY: *J.B. Manning*
 S.A. SANITATION ENGINEER OFFICE ENGINEER
 CHECKED BY: *John Under* 10-25-61
 OFFICE OF COUNTY ENGINEER, REG. C. E. NO. 2426
 SUBMITTED *Charles C. Miller*
 PALOS VERDES-CENTINELA VALLEY REGIONAL ENGINEER

- NOTES:
1. PROVIDE STAKES ON THE PROPERTY LINE OR PROPERTY LINES PRODUCED AT RIGHT ANGLES TO THE SEWER LINE AT THE CENTER LINE OF EACH MANHOLE.
 2. NO REPRESENTATIVE OF THE COUNTY ENGINEER WILL SURVEY OR LAY OUT ANY PORTION OF THE WORK.
 3. THE OWNER OR HIS AUTHORIZED REPRESENTATIVE SHALL FURNISH THE COUNTY ENGINEER WITH GRADE SHEETS AND STATIONING FOR ALL HOUSE LATERALS AND Y BRANCHES AND SHALL PROVIDE STAKES FOR THEM AT THEIR PROPER LOCATIONS WITH STATIONING PLAINLY MARKED. ANY CHANGE IN LOCATION SHALL BE REQUESTED IN WRITING BY THE OWNER OR HIS REPRESENTATIVE.
 4. THE PRIVATE ENGINEER SHALL FURNISH THE HOUSE LATERAL DEPTH AT THE PROPERTY LINE BELOW THE TOP OF CURB ELEVATION FOR EACH HOUSE LATERAL ON THE GRADE SHEET.
 5. NO REVISIONS SHALL BE MADE IN THESE PLANS WITHOUT THE APPROVAL OF THE COUNTY ENGINEER.
 6. USE STANDARD MANHOLE FRAMES AND COVERS, S-117.
 7. USE #4784 STRENGTH PIPE. ALL PIPE IS STANDARD DEPTH.
 8. USE CEMENT MORTAR OR "WEDGE-LOCK" OR "SPEED-SEAL" FOR ALL V.C.P. JOINTS PER SPECS. SECS. 36 & 48.
 9. RESURFACE ALL TRENCH WITHIN PAVED AREA TO MEET L.A. COUNTY ROAD DEPT. OR CALIF. STATE HIGHWAY REQUIREMENTS IN ACCORDANCE WITH PERMITS.
 10. ENCASE FOUR FEET OF SEWER AT POINTS OF INTERFERENCE WITH POLES, CASE III, S-173.
 11. HOUSE LATERALS TO BE CONSTRUCTED WITH INVERTS AT PROPERTY LINE FEET BELOW CURB GRADE EXCEPT AS NOTED.
 12. ALL STRUCTURES SHALL BE BRICK SEWER STRUCTURES, S-104.
 13. FOR ALLOWABLE LEAKAGE TEST USE FORMULA NO. 1, SPECS. SEC. 54.
 14. MANHOLE TOPS IN UNIMPROVED RIGHTS-OF-WAY TO BE SIX INCHES ABOVE FINISHED GRADE.
 15. THE CONTRACTOR SHALL NOTIFY THE CONSTRUCTION DIVISION BY TELEPHONE, MADISON 3-4747, EXT. 8551 AT LEAST TWENTY-FOUR HOURS BEFORE STARTING ANY WORK UNDER THIS CONTRACT.
 16. SPECIFICATIONS DATED OCT. 10, 1960 APPLY IN THE CONSTRUCTION OF THIS PROJECT.

NOTE:
 METER TESTING WATER MUST NOT BE DISCHARGED TO THE SEWER.

**P.C. 5947 PAGE 2
 DOUBLE SCALE**

NO CHARGE FOR CONNECTIONS

31249

