

LOMITA BLDG. DIST. NO. 71

PROFILE ALIGNMENT AND GRADE OF P.C. 5955

SANITARY SEWERS PAGE 1

TO BE CONSTRUCTED IN J.N. 0356.42

MONETA AVENUE

PRIVATE CONTRACT NO. 5955

W.S.

1 SHEET; 2 PAGES

30914

SCALE: VERT. 1"=4'  
HORIZ. 1"=40'  
JULY, 1961  
PREPARED IN THE OFFICES OF

SOUTH BAY ENGINEERING CORPORATION

By: *Raymond L. ...*  
REG. C. E. NO. 7181

FOR LEGEND SEE PLAN NO. S-A-64

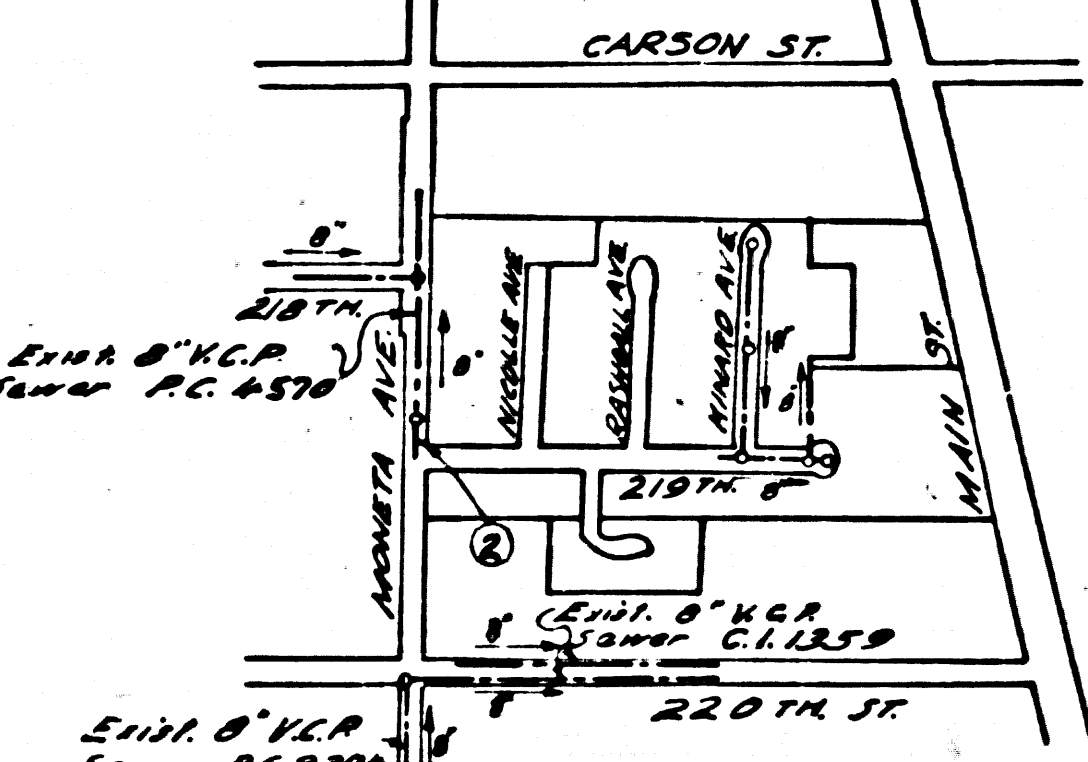
BM. SY 503 ELEV 36.388 ft  
Spike in Walk 402 feet  
N. of Carson St. 501 feet  
W. of Moneta Ave.

NOTES:

1. PROVIDE STAKES ON THE PROPERTY LINE OR PROPERTY LINES PRODUCED AT RIGHT ANGLES TO THE SEWER LINE AT THE CENTER LINE OF EACH MANHOLE.
2. NO REPRESENTATIVE OF THE COUNTY ENGINEER WILL SURVEY OR LAY OUT ANY PORTION OF THE WORK.
3. THE OWNER OR HIS AUTHORIZED REPRESENTATIVE SHALL FURNISH THE COUNTY ENGINEER WITH GRADE SHEETS AND STATIONING FOR ALL HOUSE LATERALS AND BRANCHES AND SHALL PROVIDE STAKES FOR THEM AT THEIR PROPER LOCATIONS WITH STATIONING PLAINLY MARKED. ANY CHANGE IN LOCATION SHALL BE REQUESTED IN WRITING BY THE OWNER OR HIS REPRESENTATIVE.
4. THE PRIVATE ENGINEER SHALL FURNISH THE HOUSE LATERAL DEPTH AT THE PROPERTY LINE BELOW THE TOP OF CURB ELEVATION FOR EACH HOUSE LATERAL ON THE GRADE SHEET.
5. NO REVISIONS SHALL BE MADE IN THESE PLANS WITHOUT THE APPROVAL OF THE COUNTY ENGINEER.
6. USE STANDARD MANHOLE FRAMES AND COVERS, EXCEPT AS NOTED.
7. USE STANDARD STRENGTH PIPE.
8. USE CEMENT MORTAR OR "WEDGE-LOCK" OR "SEED-SEAL" FOR ALL V.C.P. JOINTS PER SPEC'S, SECS. 26 & 41.
9. RESURFACE ALL TRENCH WITHIN PAVED AREA TO MEET L.A. COUNTY ROAD DEPT. OR CALIF. STATE HIGHWAY REQUIREMENTS IN ACCORDANCE WITH PERMITS.
10. ENCASE FOUR FEET OF SEWER AT POINTS OF INTERFERENCE WITH POLES, CASE III, S-172.
11. HOUSE LATERALS TO BE CONSTRUCTED AT A 1/4" RISE PER FOOT TO PROPERTY LINE.

12. ALL STRUCTURES SHALL BE UNDER SEWER STRUCTURES, EXCEPT AS NOTED.
13. FOR ALLOWABLE LEAKAGE TEST USE FORMULA NO. 1, SPEC'S, SEC. 54.
14. MANHOLE TOPS IN UNIMPROVED RIGHTS-OF-WAY TO BE SIX INCHES ABOVE FINISHED GRADE.
15. THE CONTRACTOR SHALL NOTIFY THE CONSTRUCTION DIVISION BY TELEPHONE, MADISON 9-4747, EXT. 8-351 AT LEAST TWENTY-FOUR HOURS BEFORE STARTING ANY WORK UNDER THIS CONTRACT.
16. SPECIFICATIONS DATED OCT. 10, 1960 APPLY IN THE CONSTRUCTION OF THIS PROJECT.
17. THE EXISTENCE AND LOCATION OF ANY UNDERGROUND UTILITY PIPES OR STRUCTURES SHOWN ON THESE PLANS ARE OBTAINED BY A SEARCH OF THE AVAILABLE RECORDS. TO THE BEST OF OUR KNOWLEDGE THERE ARE NO UNUSUAL UTILITY RECORDS SHOWN ON THIS DRAWING. THE CONTRACTOR IS REQUIRED TO FURTHER AND UNUSUAL UTILITY RECORDS TO PERFECT THE UTILITY RECORDS SHOWN AND ANY OTHER DATA NOT OF RECORD OR NOT SHOWN ON THIS DRAWING.

CONNECTION CHARGES AS INDICATED  
*Edw. W. ...*



CONNECTIONS FOR THE DISPOSAL OF INDUSTRIAL WASTES SHALL BE MADE TO SEWERS SHOWN ON THESE DRAWINGS WITHOUT WRITTEN PERMISSION FROM THE COUNTY ENGINEER AND GENERAL MANAGER OF THE COUNTY SANITATION DISTRICTS.

NOTE:  
GRADES TO WHICH THIS IMPROVEMENT IS TO BE CONSTRUCTED ARE SHOWN ON PLANS AND PROFILES. GRADE POINTS FOR TOP OF CURBS, CENTER LINE OF STREETS, OR CENTER LINE OF ALLEYS ARE SHOWN BY CIRCLES ON PROFILES AT ALL POINTS BETWEEN DESIGNATED POINTS THE GRADE SHALL BE ESTABLISHED SO AS TO CONFORM TO A STRAIGHT LINE BETWEEN SAID DESIGNATED POINTS.  
ELEVATIONS ARE IN FEET ABOVE U.S.C. & G.S. SEA LEVEL DATUM OF 1929.  
THIS DRAWING AND THE DATA HEREON ARE HEREBY MADE A PART OF THE SPECIFICATIONS.  
WORK SHALL BE CONSTRUCTED ACCORDING TO SPECIFICATIONS ON FILE IN THE OFFICE OF THE COUNTY ENGINEER AND SHALL BE PROSECUTED ONLY IN THE PRESENCE OF THE COUNTY ENGINEER.  
BEFORE WORK CAN BE STARTED, THE CONTRACTOR MUST OBTAIN A PERMIT TO EXCAVATE IN COUNTY STREETS FROM THE L.A. COUNTY ROAD DEPT., DISTRICT OFFICE NO. 3, AND PAY A FEE TO THE COUNTY ENGINEER, ROOM 710, 108 W. SECOND STREET, SUFFICIENT TO COVER THE COST OF CONSTRUCTION INSPECTION AND RECORD PLANS.  
APPROVAL OF THIS PLAN BY THE COUNTY OF LOS ANGELES DOES NOT CONSTITUTE A REPRESENTATION AS TO THE ACCURACY OF THE LOCATION OR OF THE EXISTENCE OR NON-EXISTENCE OF ANY UNDERGROUND UTILITY PIPE, OR STRUCTURE WITHIN THE LIMITS OF THIS PROJECT. THIS NOTE APPLIES TO ALL PAGES.  
IF WORK IS TO BE DONE IN A STATE HIGHWAY, A PERMIT MUST BE OBTAINED FROM THE STATE OF CALIFORNIA, DIVISION OF HIGHWAYS, 120 SOUTH SPRING STREET.

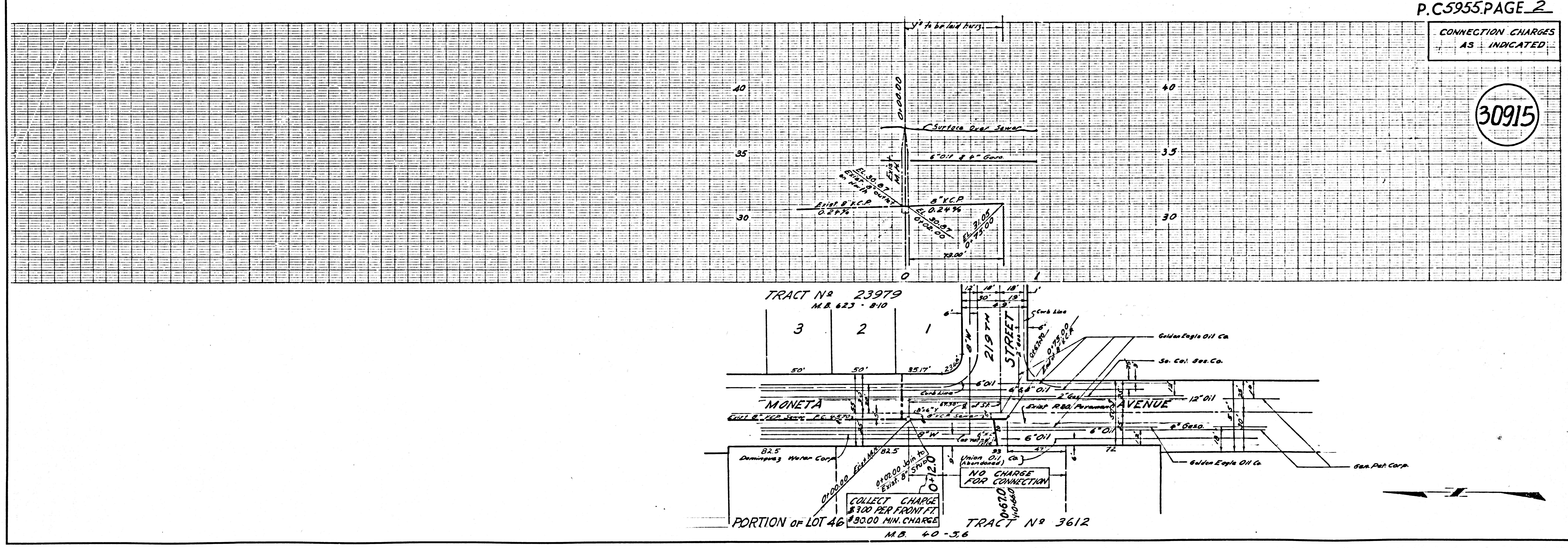
COUNTY OF LOS ANGELES, CALIFORNIA  
APPROVED, JOHN A. LAMBIE, COUNTY ENGINEER APPROVED, C.R. COMPANY CHIEF ENGINEER  
CO. SAN. DIST. NO. 5  
BY: *C.E. ...* BY: *J. ...*  
ASST. SANITATION ENGINEER OFFICE ENGINEER  
CHECKED BY: *R.F. ...* 8-15-61  
OFFICE OF COUNTY ENGINEER, REG. C. E. NO. 11636

SUBMITTED: *J. ...*  
PALO VERDES-CENTINELA VALLEY REGIONAL ENGINEER

P.C. 5955 PAGE 2

CONNECTION CHARGES AS INDICATED

30915



TRACT No 23979  
M.B. 623 - 810

3 2 1

MONETA AVENUE

825 Demingway Water Corp

825 Union Oil (Abandoned) Co

83 Union Oil (Abandoned) Co

84 Golden Eagle Oil Co

85 San. Pat. Corp.

PORTION OF LOT 46

COLLECT CHARGE \$300 PER FRONT FT. \$9000 MIN. CHARGE

NO CHARGE FOR CONNECTION

TRACT No 3612  
M.B. 40-36