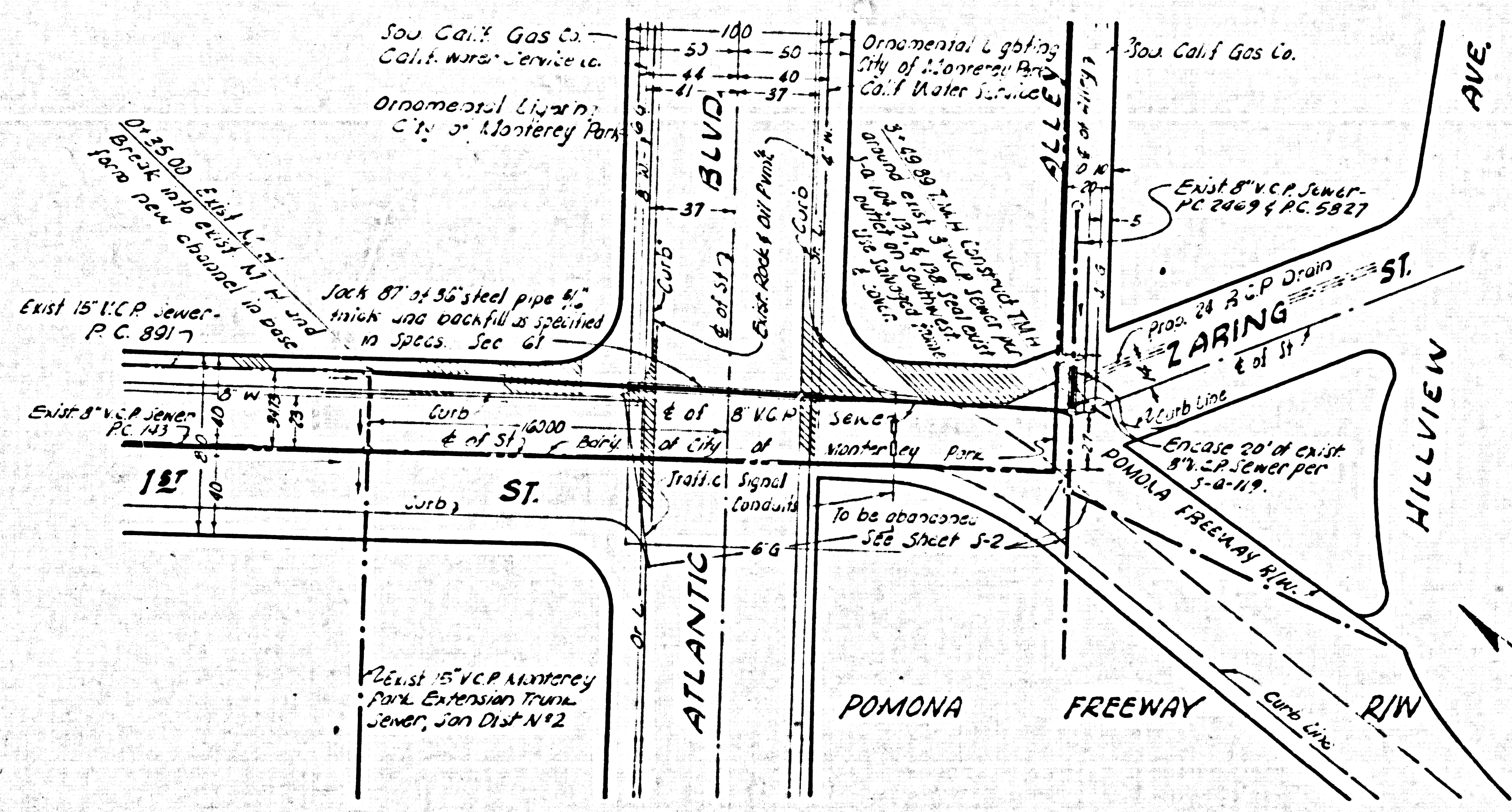
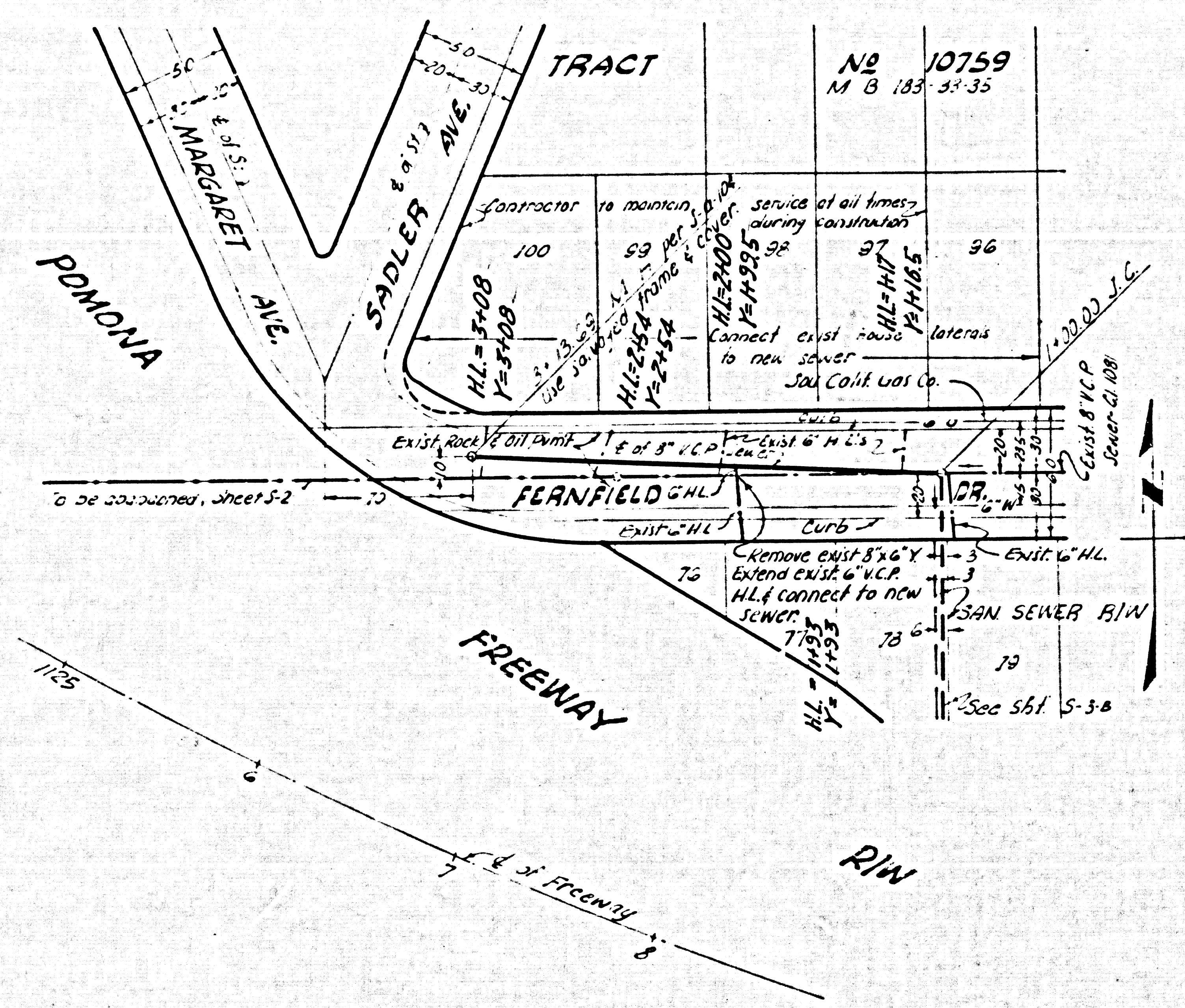


F.P.N.	STATE	FEDERAL PROJECT NO.	SHEET NO.	TOTAL SHEETS
7	CALIF.			
DIST.	COUNTY	ROUTE	SEC.	FILE NO.
VII	LA	172		

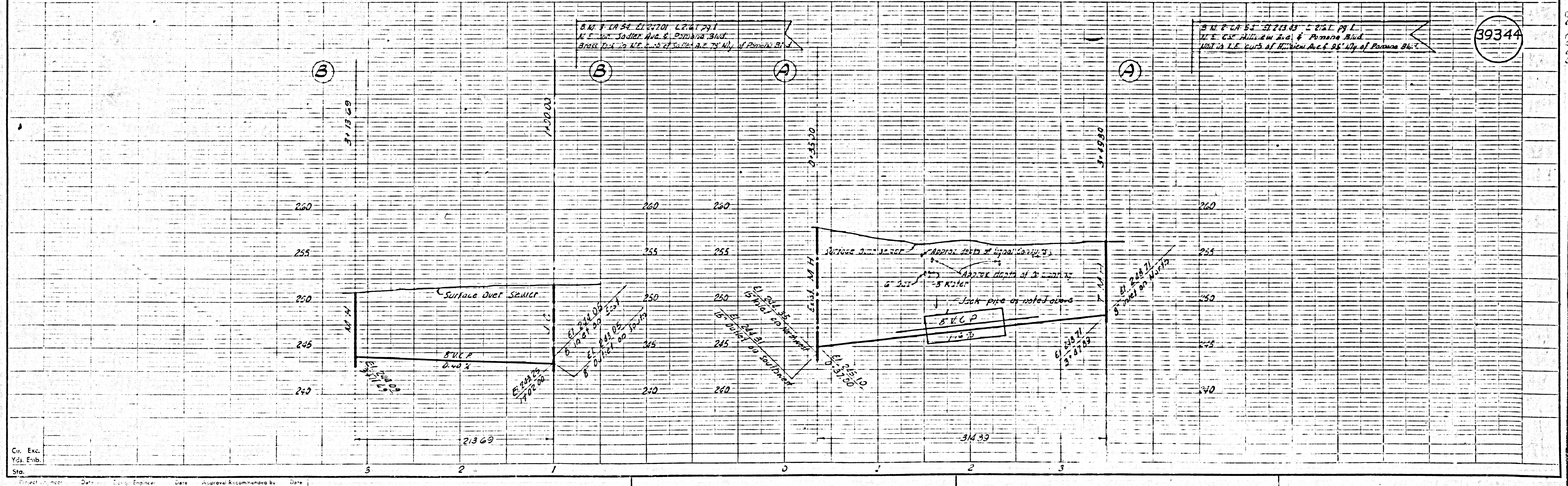
39343

Approved: _____
Dist. Eng. Dist. _____



PLAN & PROFILE OF
SANITARY SEWERS
TO BE RECONSTRUCTED UNDER
PRIVATE CONTRACT NO 5966
SHEET S-1 OF 6 SHEETS
W.S. 36 AUGUST, 1962
SCALES: Horiz. 1"=50'; Vert. 1"=5'
COUNTY OF LOS ANGELES, CALIFORNIA
APPROVED, JOHN A. LAMBIE, COUNTY ENGINEER
BY Richard E. Kline
ASST. SANITATION ENGINEER
APPROVED, P.R. WARWICK, CITY ENGINEER
CITY OF MONTEBELLO
BY W.J. Lockman
CITY ENGINEER
APPROVED, W.J. LOCKMAN, CITY ENGINEER
CITY OF MONTEBELLO
BY W.J. Lockman
CITY ENGINEER
APPROVED, JOHN D. PARLHURST, CHIEF ENGINEER
SAN. DISTRICT NO 2
BY John D. Parlhurst
OFFICE ENGINEER
NO CONNECTIONS FOR THE DISPOSAL OF INDUSTRIAL WASTES SHALL BE MADE TO SEWERS SHOWN ON THESE DRAWINGS WITHOUT WRITTEN PERMISSION FROM THE CHIEF ENGINEER AND GENERAL MANAGER OF THE COUNTY SANITATION DISTRICTS

DESIGNED	T. HUNDA
CHECKED	M. SWELL



39344

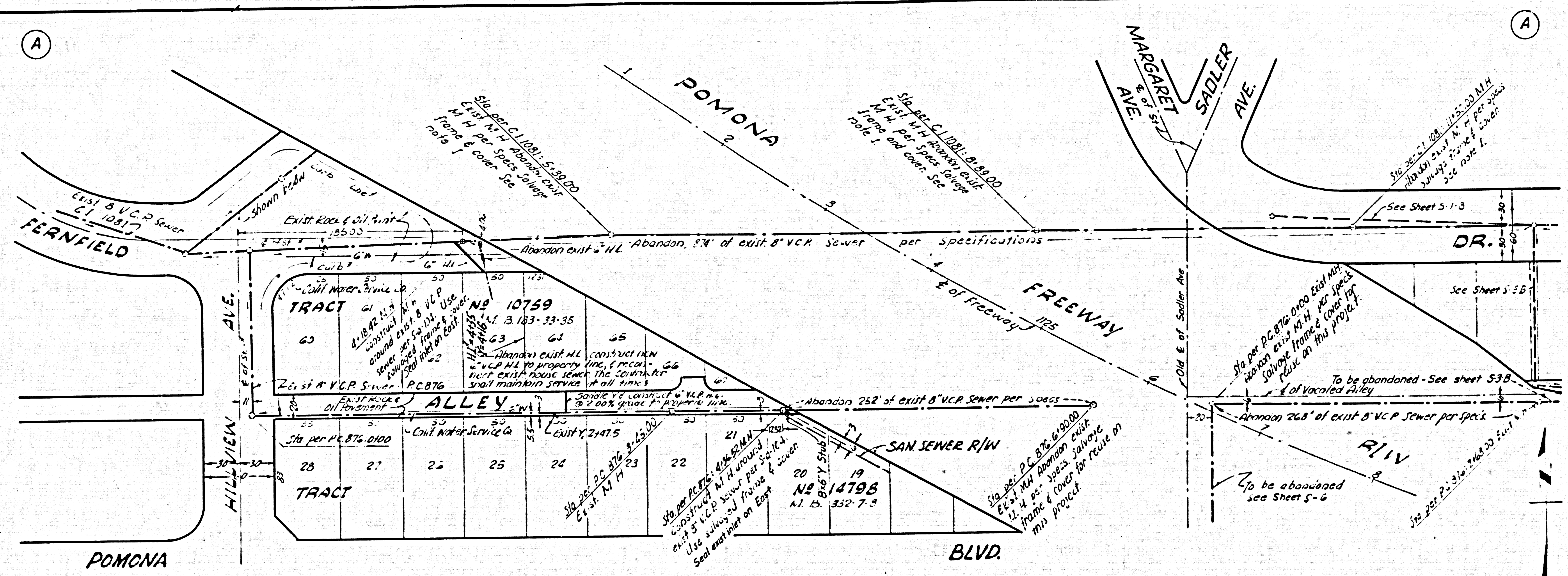
Civ. Eng. Yds. Emb. Sta. Project No. Date Date Approval Recommended by Date

39345

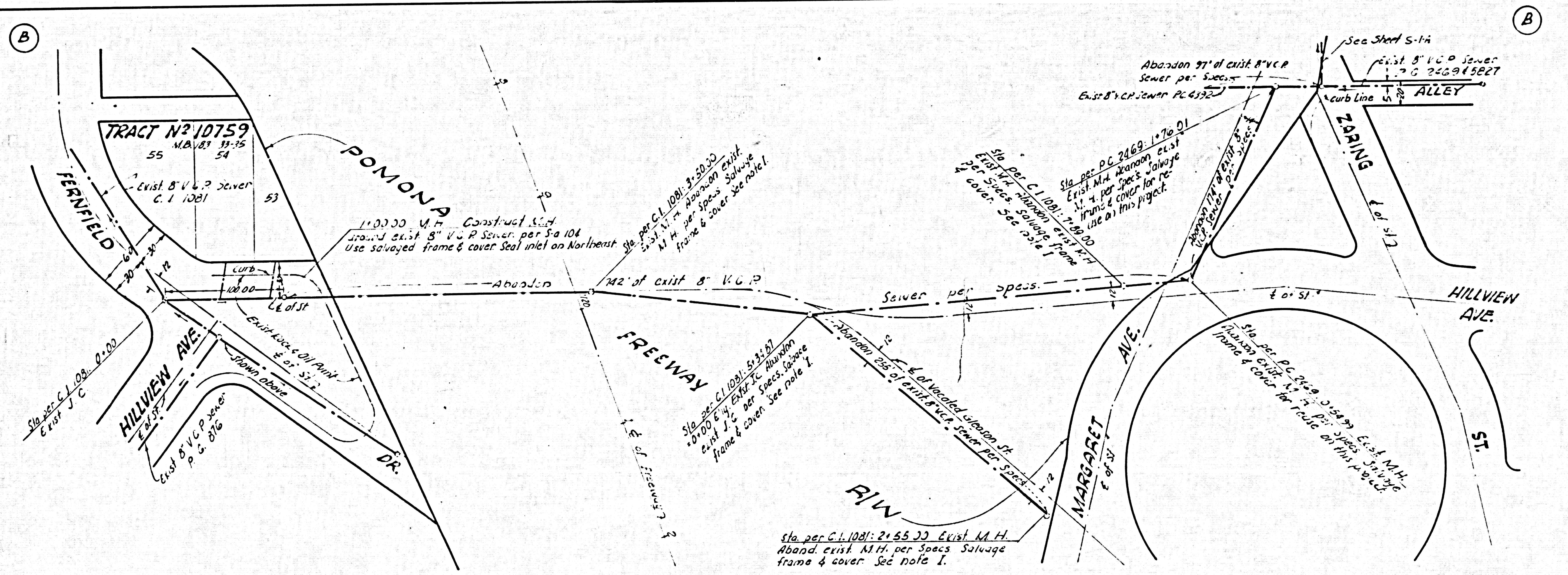
PC.5966
 SHEET S-2 OF 6 SHEETS

NOTES:
 1. The Contractor shall salvage the frames & covers from manholes indicated on this sheet & deliver them to the County Sewer Maintenance Yard, 2849 S Myrtle Ave, Inglewood, + 1129 E 99th St, Los Angeles.

DESIGNED J. HONDA
 CHECKED V. HALL



39346



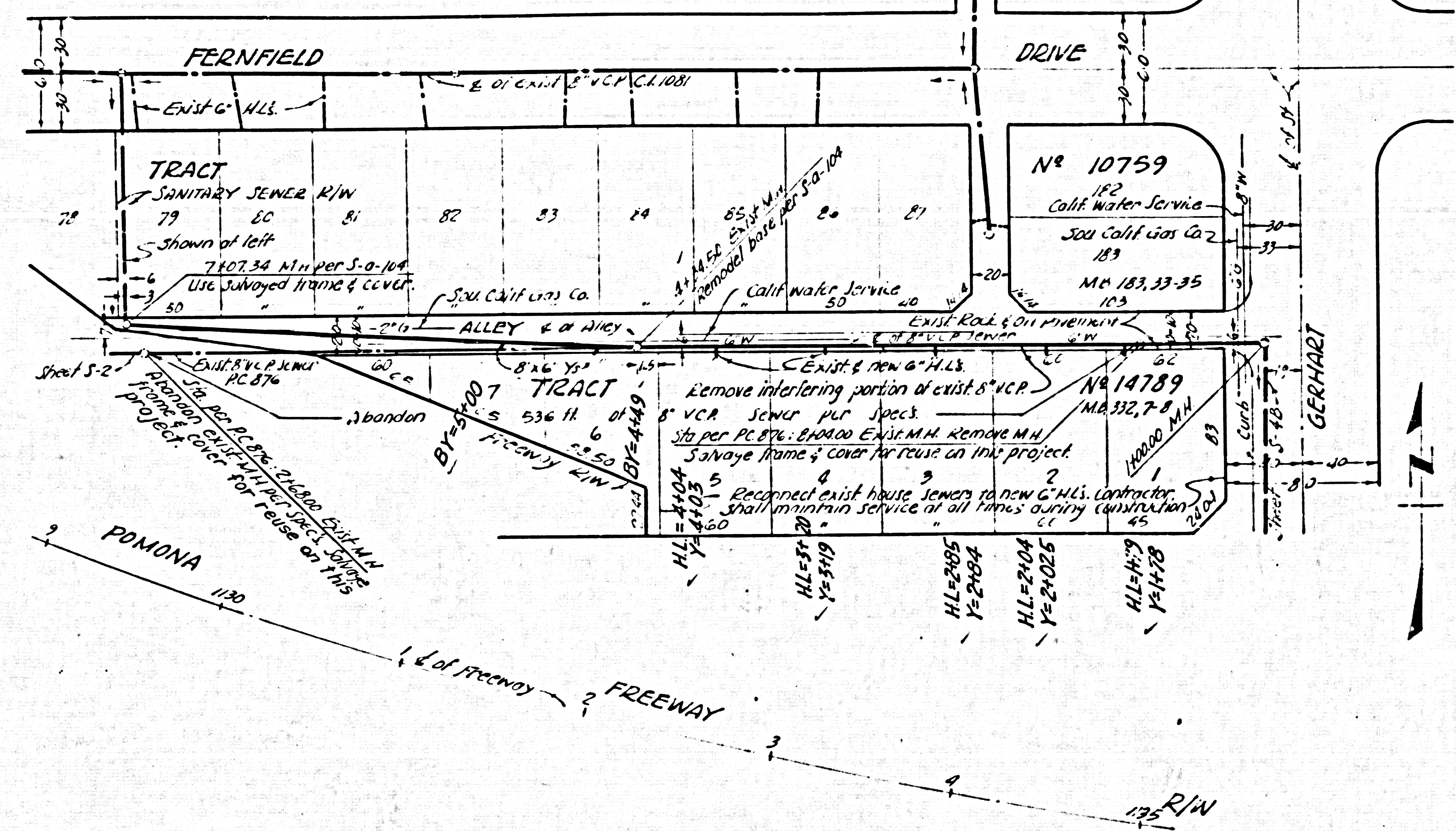
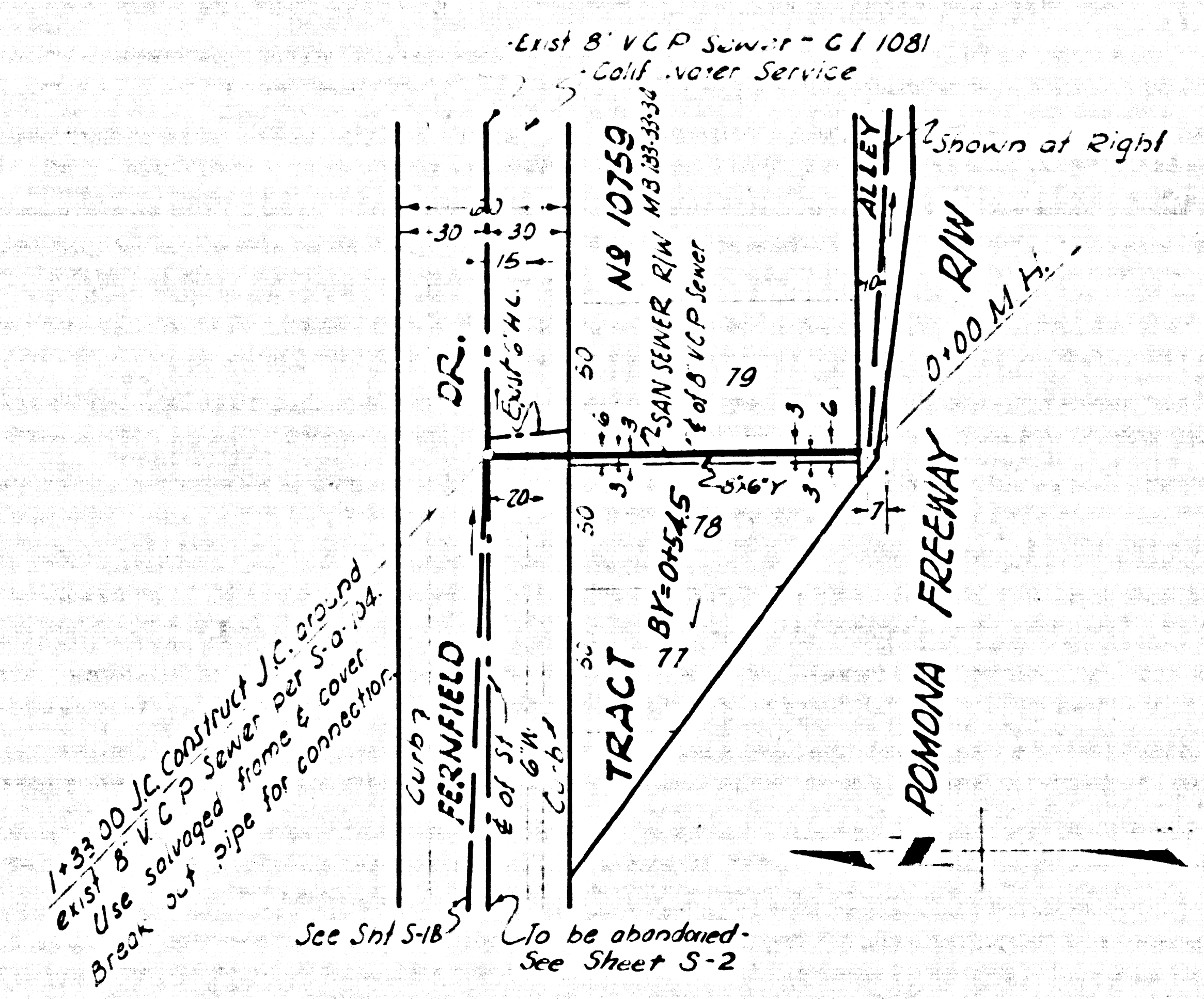
D. P. R. DIV. NO.	STATE	FEDERAL PROJECT NO.	SHEET NO.	TOTAL SHEETS
7	CALIF.			

DIST.	COUNTY	ROUTE	SEC.	SHEET NO.	TOTAL SHEETS
VII	LA	172			

Approved: _____ Dist. Eng. Dist. _____

39347

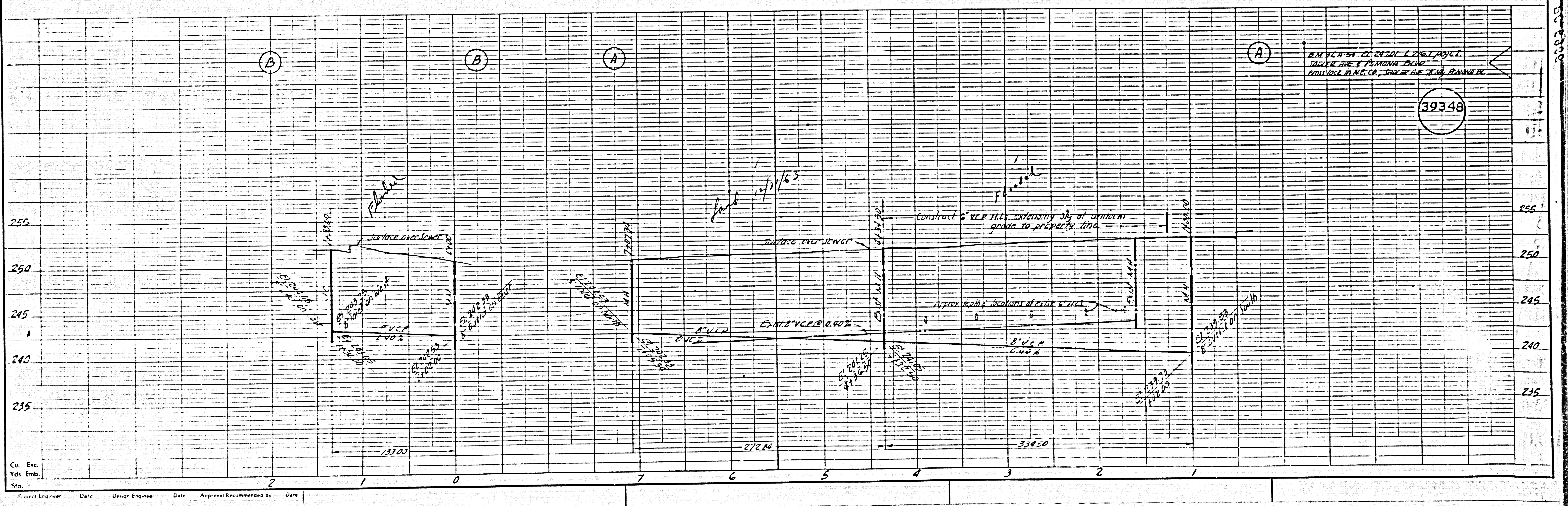
PC. 5966
SHEET 5-3 OF 6 SHEETS



DESIGNED T. HONAN, G. ESQUIER
CHECKED M. ISAELL

39348

PLAN BEARING OF EXIST. & PROPOSED SEWER LINE & POMONA BLVD. FROM VERTICAL LINE CO. 104.72 AC. 7.14, POMONA BL.



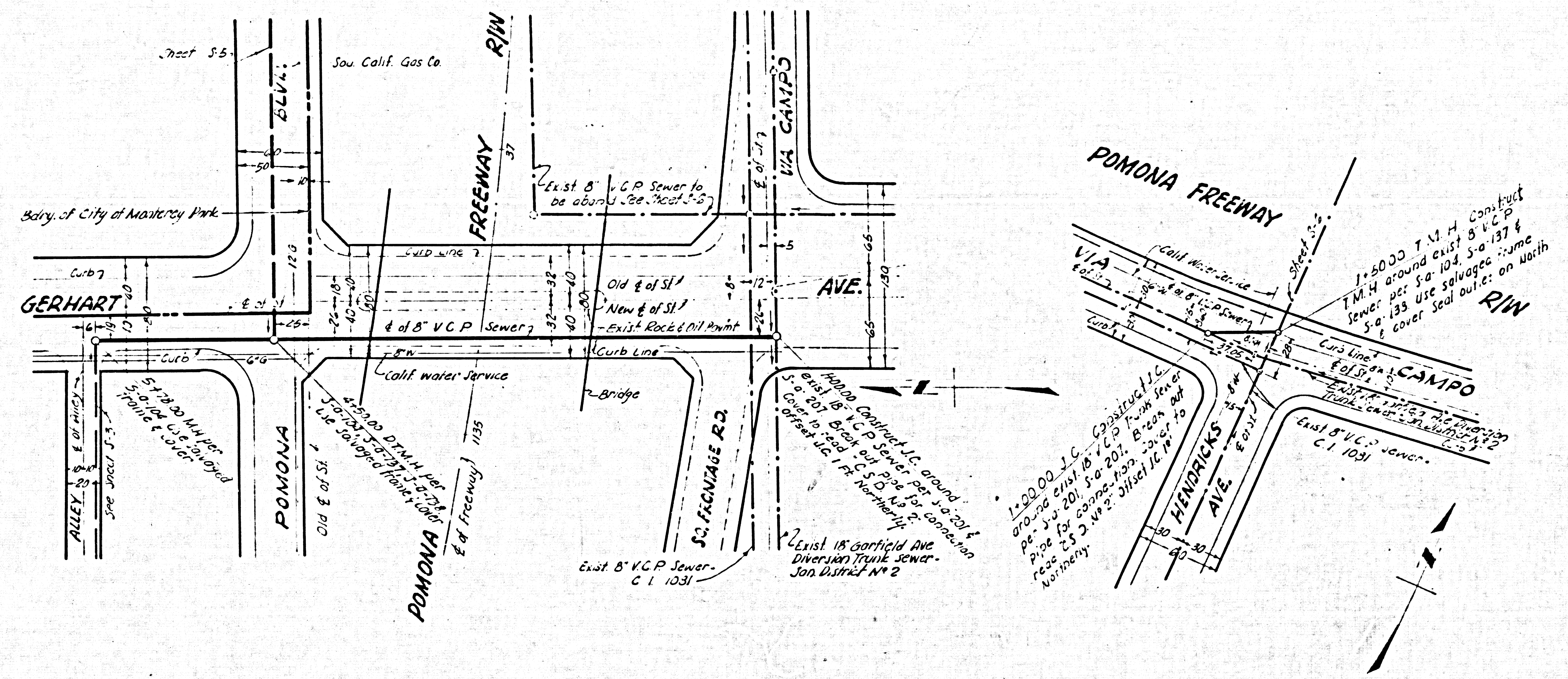
Cu. Exc. Yds. Emb. Sta. _____

Project Engineer _____ Date _____ Design Engineer _____ Date _____ Approval Recommended By _____ Date _____

Approved: _____ Dist. Eng. Dist.

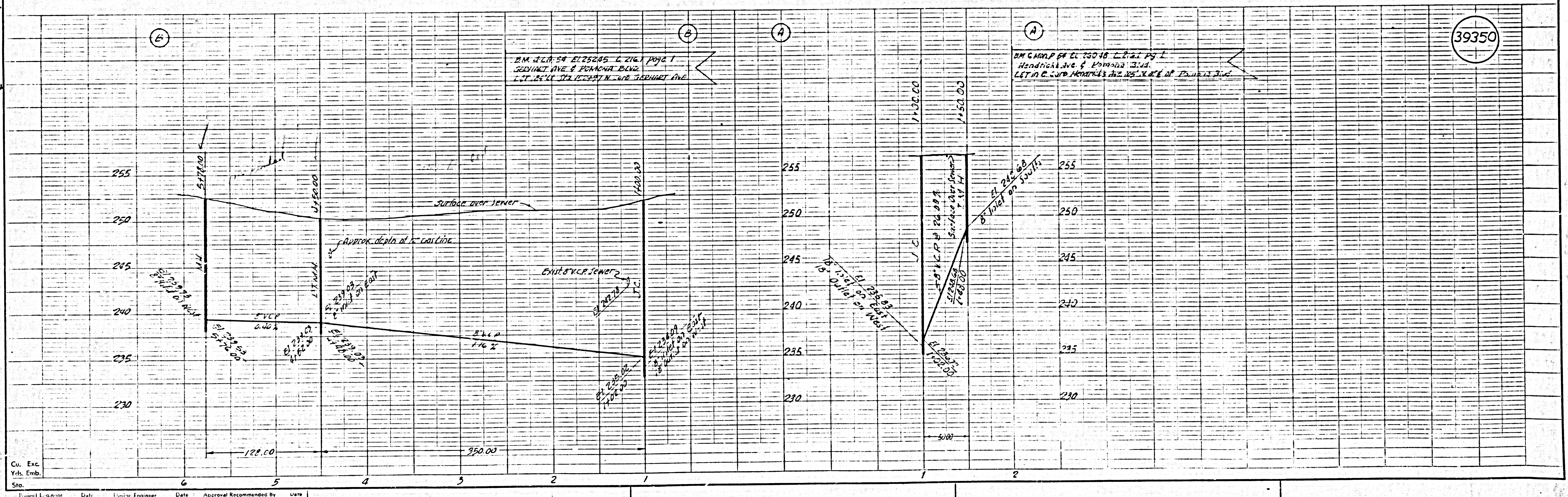
39349

PC 5966
SHEET 3-A OF 6 SHEETS



DESIGNED T. HOWA
CHECKED MISHELL

39350



Cu. Exc. Yds. Emb. Sta. 6 5 4 3 2 1

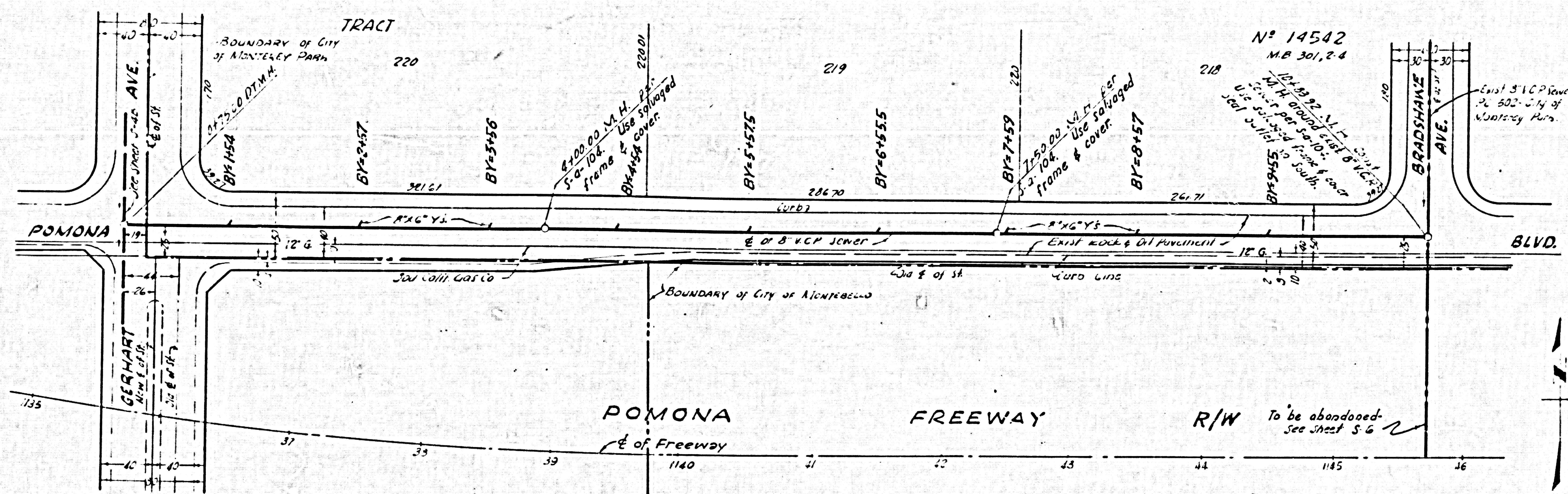
Project Engineer Date Design Engineer Date Approval Recommended By Date

B.P.R. DIST. NO.	STATE	FEDERAL PROJECT NO.	SHEET NO.	TOTAL SHEETS
7	CALIF.			
DIST.	COUNTY	ROUTE	SEC.	SHEET NO.
VII	LA	172		

Approved: _____ Dist. Eng. Dist. _____

39351

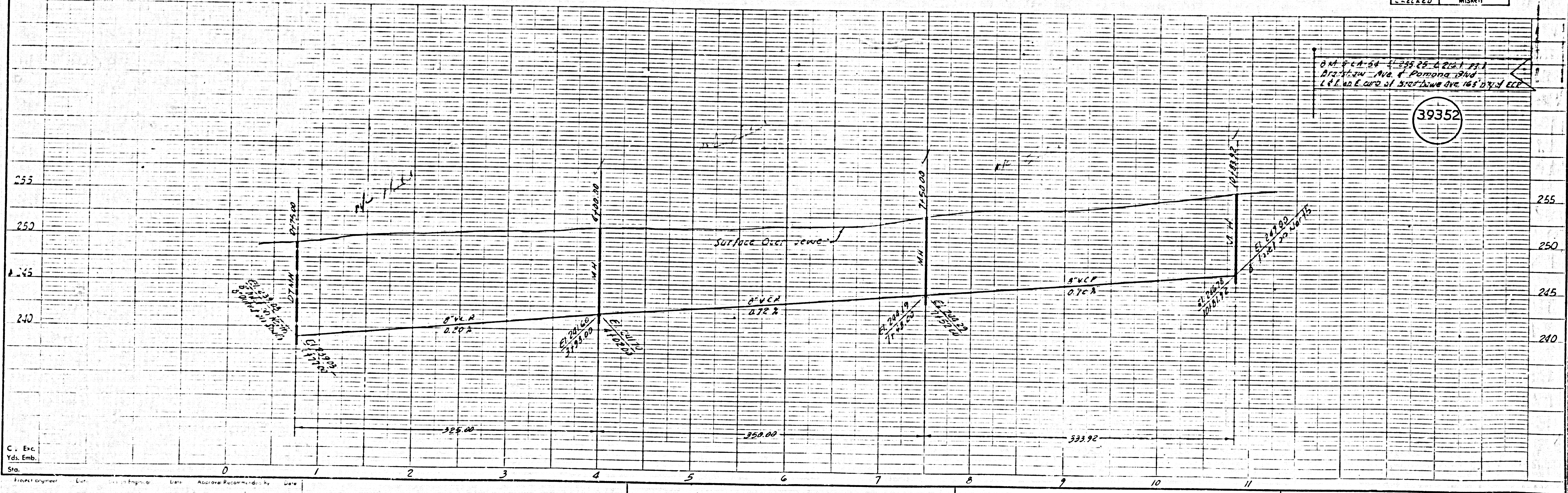
P.C. 5966
SHEET 3-5 OF 6 SHEETS



DESIGNED T. MONDA
CHECKED Miskell

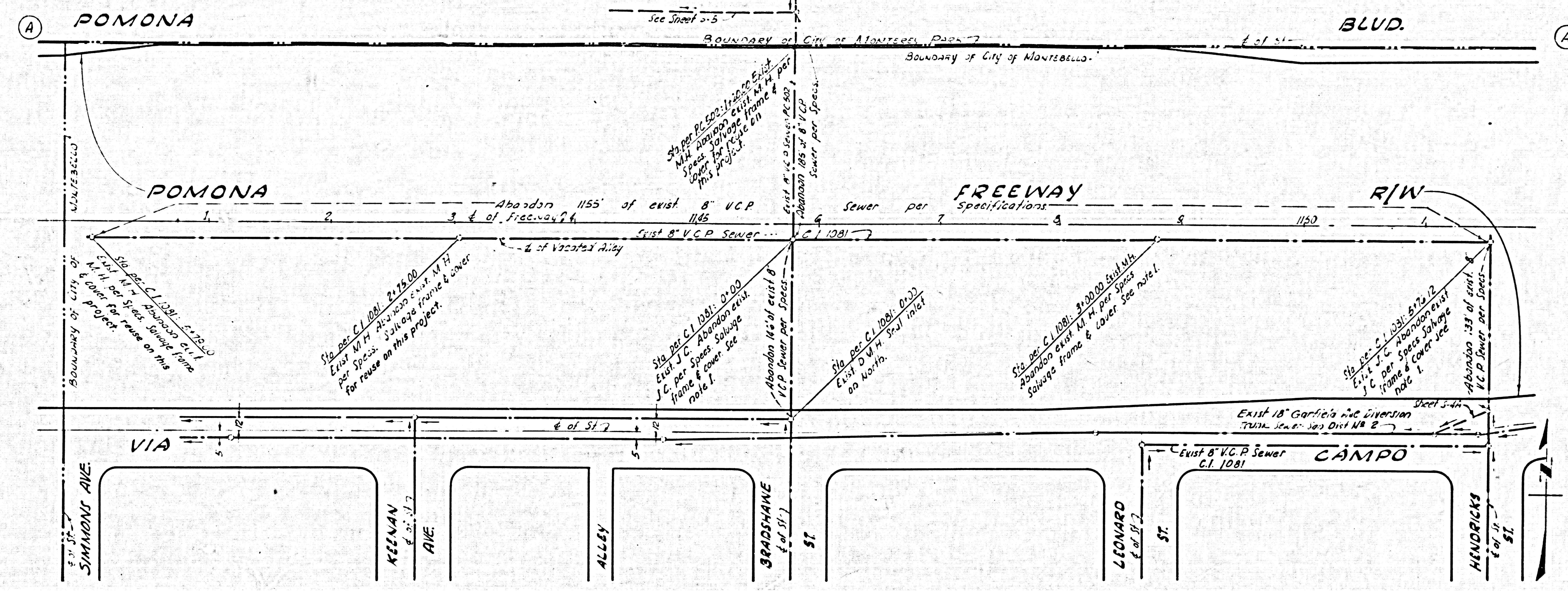
Dist. No. 7 - 255 25 - 212 - 172
Area: 1.24 Mw. & Pomona Blvd
L.R. and E. side of Bradshaw Ave. 165' by 1/2 E.C.P.

39352



C. Exc.
Yds. Emb.
Sta.

Project Engineer: _____
Dist. Engineer: _____
Date: _____
Approval/Recommendation: _____
Date: _____



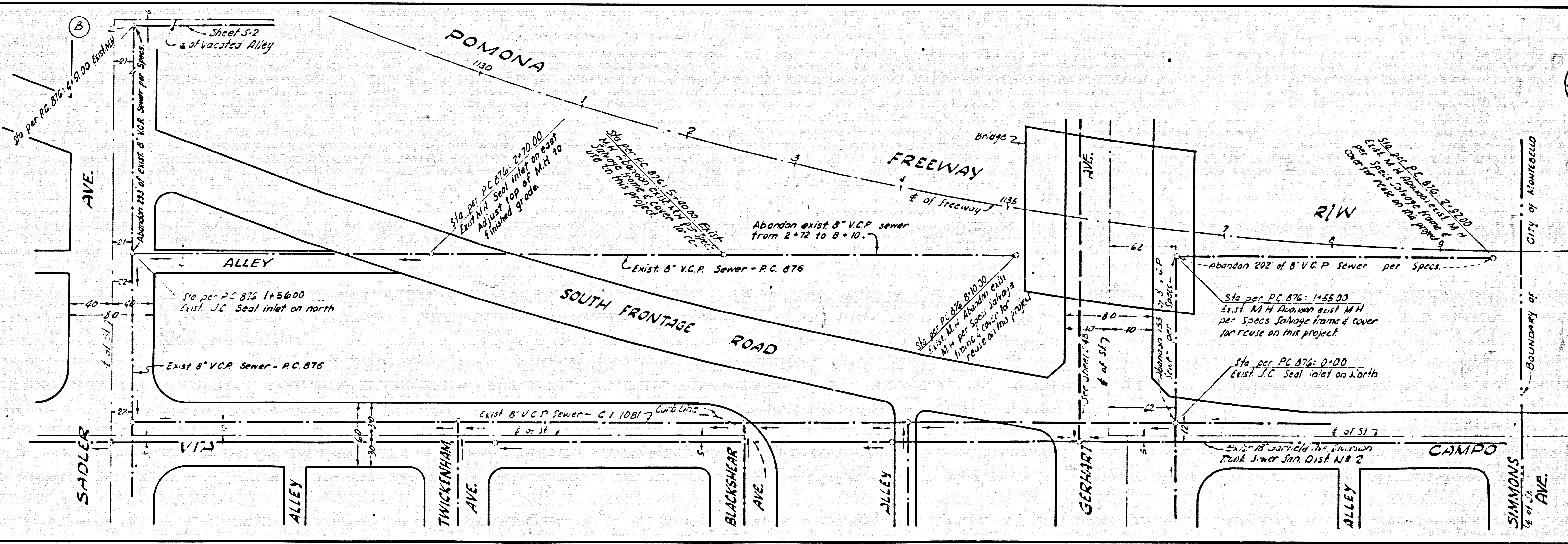
DIST.	COUNTY	ROUTE	SECTION	SHEET NO.	TOTAL SHEETS
VII	LA	172			

39353

PC 5966
SHEET 3-G OF 6 SHEETS

NOTES
1. The Contractor shall salvage the frames & covers from manholes indicated on this sheet & deliver them to the County Sewer Maintenance Yard, 24th & Ivy Sts., Pomona, Irwindale, at 124 E. 59th St., Los Angeles.

DESIGNED: I. HONDA
CHECKED: Miskell



39354