

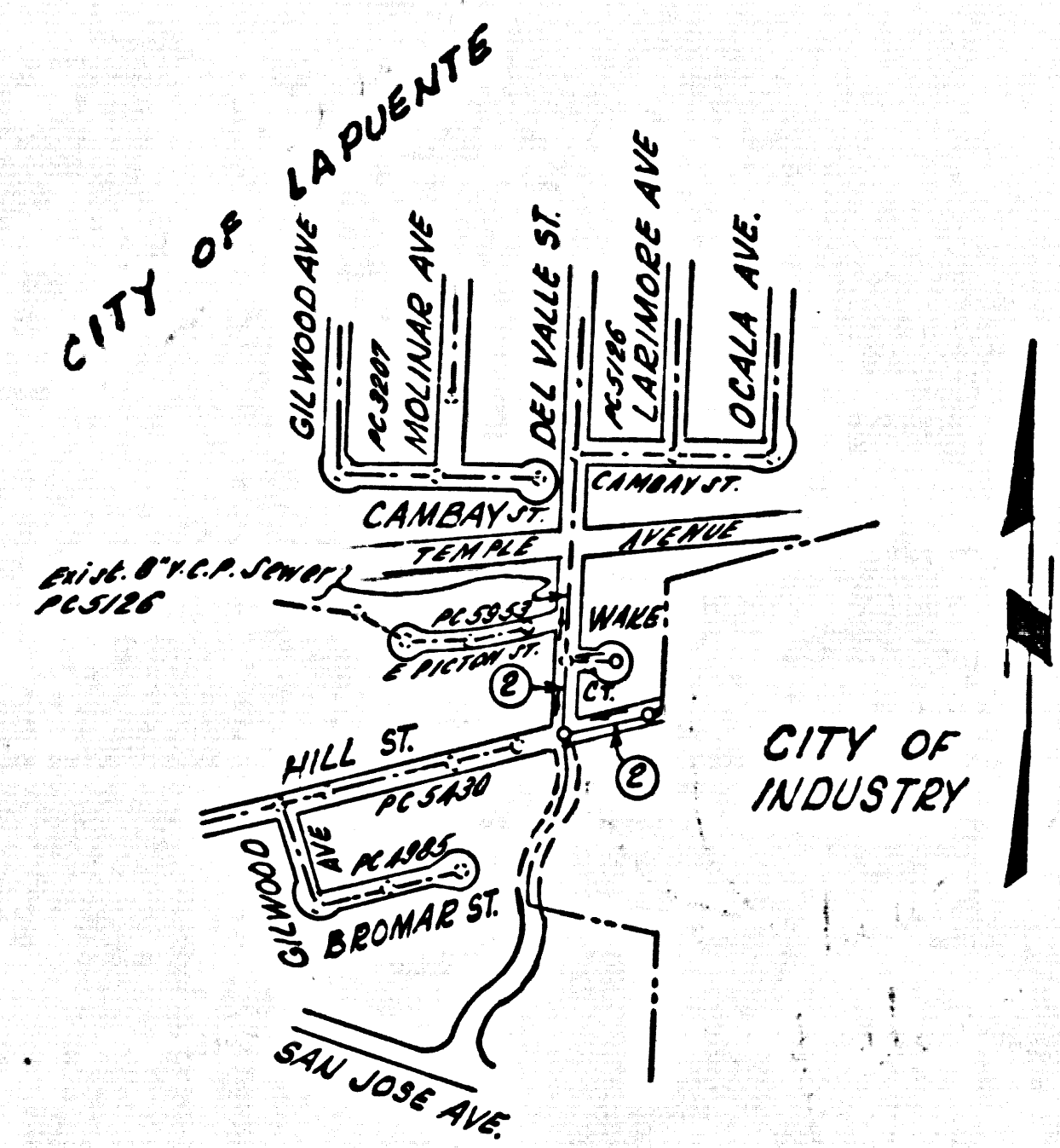
CITY OF INDUSTRY BLDG. DIST. NO. 2.03
LA PUENTE BLDG. DIST. NO. 2.02

PROFILE ALIGNMENT AND GRADE OF P.C. 5967
SANITARY SEWERS PAGE 1

PRIVATE ENGINEER'S NOTICE TO CONTRACTOR

The existence and location of any underground utility pipes or structures shown on these plans were obtained by a search of available records. To the best of our knowledge there are no existing utilities except as shown on this map.
The Contractor is required to take the precautionary measures to protect the utility lines shown and any other lines not of record or not shown on this drawing.

E. E. Person
Registered Engineer No. 5828



INDEX MAP
P.C. No. 5967
Scale 1"=600'

BENCH MARK: S.G. 1030
Let in N. end of 1/2 step of Puente Community Church 330' E/O & Glendora Ave. & 125' N/O & Inter Hill St. & Glendora Ave. (W. ent. to Church).
PUENTE 1955 ELEV. 355.105

NO CHARGE FOR CONNECTIONS
7/27/61 *E. E. Person* 8-11-61

- NOTES:
- PROVIDE STAKES ON THE PROPERTY LINE OR PROPERTY LINES PRODUCED AT RIGHT ANGLES TO THE SEWER LINE AT THE CENTER LINE OF EACH MANHOLE.
 - NO REPRESENTATIVE OF THE CITY ENGINEER WILL SURVEY OR LAY OUT ANY PORTION OF THE WORK.
 - THE OWNER OR HIS AUTHORIZED REPRESENTATIVE SHALL FURNISH THE CITY ENGINEER WITH GRADE SHEETS AND STATIONING FOR ALL HOUSE LATERALS AND Y BRANCHES AND SHALL PROVIDE STAKES FOR THEM AT THEIR PROPER LOCATIONS WITH STATIONING PLAINLY MARKED. ANY CHANGE IN LOCATION SHALL BE REQUESTED IN WRITING BY THE OWNER OR HIS REPRESENTATIVE.
 - THE PRIVATE ENGINEER SHALL FURNISH THE HOUSE LATERAL DEPTH AT THE PROPERTY LINE BELOW THE TOP OF CURB ELEVATION FOR EACH HOUSE LATERAL ON THE GRADE SHEET.
 - NO REVISIONS SHALL BE MADE IN THESE PLANS WITHOUT THE APPROVAL OF THE CITY ENGINEER.
 - USE STANDARD MANHOLE FRAMES AND COVERS, S=117 A.
 - USE STANDARD STRENGTH PIPE EXCEPT AS NOTED.
 - USE CEMENT MORTAR OR "WEDGE-LOCK" OR "SPEED-SEAL" FOR ALL Y.C.P. JOINTS PER SPECS, SECS. 36 & 40.
 - RESURFACE ALL TRENCH WITHIN PAVED AREA TO MEET L.A. COUNTY ROAD DEPT. OR CALIF. STATE HIGHWAY REQUIREMENTS IN ACCORDANCE WITH PERMITS.
 - ENCASE FOUR FEET OF SEWER AT POINTS OF INTERFERENCE WITH POLES, CASE III, S=172.
 - HOUSE LATERALS TO BE CONSTRUCTED WITH INVERTS AT PROPERTY LINE 6 FEET BELOW CURB GRADE.
 - ALL STRUCTURES SHALL BE BRICK SEWER STRUCTURES, S=104.
 - FOR ALLOWABLE LEAKAGE TEST USE FORMULA NO. 1, SPECS, SEC. 54.
 - MANHOLE TOPS IN UNIMPROVED RIGHTS-OF-WAY TO BE SIX INCHES ABOVE FINISHED GRADE.
 - THE CONTRACTOR SHALL NOTIFY THE CONSTRUCTION DIVISION BY TELEPHONE, MADISON 9-474, EXT. 8551 AT LEAST TWENTY-FOUR HOURS BEFORE STARTING ANY WORK UNDER THIS CONTRACT.
 - STANDARD SPECIFICATIONS DATED OCTOBER 10, 1960 SHALL APPLY IN THE CONSTRUCTION OF THIS PROJECT.

NO CONNECTIONS FOR THE DISPOSAL OF INDUSTRIAL WASTES SHALL BE MADE TO SEWERS SHOWN ON THESE DRAWINGS WITHOUT WRITTEN PERMISSION FROM THE CHIEF ENGINEER AND GENERAL MANAGER OF THE COUNTY SANITATION DISTRICTS.

DOUBLE SCALE
VERTICAL

PRIVATE CONTRACT NO. 5967

W.S. 38
1 SHEET 2 PAGES
SCALE: VERT. 1"=6'
HORIZ. 1"=40'
JULY, 1961
PREPARED IN THE OFFICES OF

NATIONAL ENGINEERING CO.

By: *E. E. Person*
REG. C. E. NO. 5828

FOR LEGEND SEE PLAN NO. S-A-64

NOTE:
GRADES TO WHICH THIS IMPROVEMENT IS TO BE CONSTRUCTED ARE SHOWN ON PLANS AND PROFILES. GRADE POINTS FOR TOP OF CURBS, CENTER LINE OF STREETS OR CENTER LINE OF ALLEYS ARE SHOWN BY CIRCLES ON PROFILES. AT ALL POINTS BETWEEN DESIGNATED POINTS THE GRADE SHALL BE ESTABLISHED SO AS TO CONFORM TO A STRAIGHT LINE DRAWN BETWEEN SAID DESIGNATED POINTS. ELEVATIONS ARE IN FEET ABOVE U.S.C. & G.S. SEA LEVEL DATUM OF 1929.
THIS DRAWING AND THE DATA HEREON ARE HEREBY MADE A PART OF THE SPECIFICATIONS. WORK SHALL BE CONSTRUCTED ACCORDING TO SPECIFICATIONS ON FILE IN THE OFFICE OF THE CITY ENGINEER AND SHALL BE PROSECUTED ONLY IN THE PRESENCE OF THE CITY ENGINEER.
BEFORE WORK CAN BE STARTED, THE CONTRACTOR MUST OBTAIN A PERMIT TO RECYCLE IN CITY STREETS FROM THE L.A. COUNTY ROAD DEPT., DISTRICT OFFICE NO. 1, AND PAY A FEE TO THE CITY OF INDUSTRY, 100 SOUTH MACLENDEN BLVD., CITY OF INDUSTRY, SUFFICIENT TO COVER THE COST OF CONSTRUCTION INSPECTION AND RECORD PLANS.
APPROVAL OF THIS PLAN BY THE CITY OF INDUSTRY DOES NOT CONSTITUTE A REPRESENTATION AS TO THE ACCURACY OF THE LOCATION OF OR THE EXISTENCE OR NON-EXISTENCE OF ANY UNDERGROUND UTILITY PIPE OR STRUCTURE WITHIN THE LIMITS OF THIS PROJECT. THIS NOTE APPLIES TO ALL PAGES.
IF WORK IS TO BE DONE IN A STATE HIGHWAY, A PERMIT MUST BE OBTAINED FROM THE STATE OF CALIFORNIA, DIVISION OF HIGHWAYS, 120 SOUTH SPRING STREET.

CITY OF INDUSTRY, CALIFORNIA

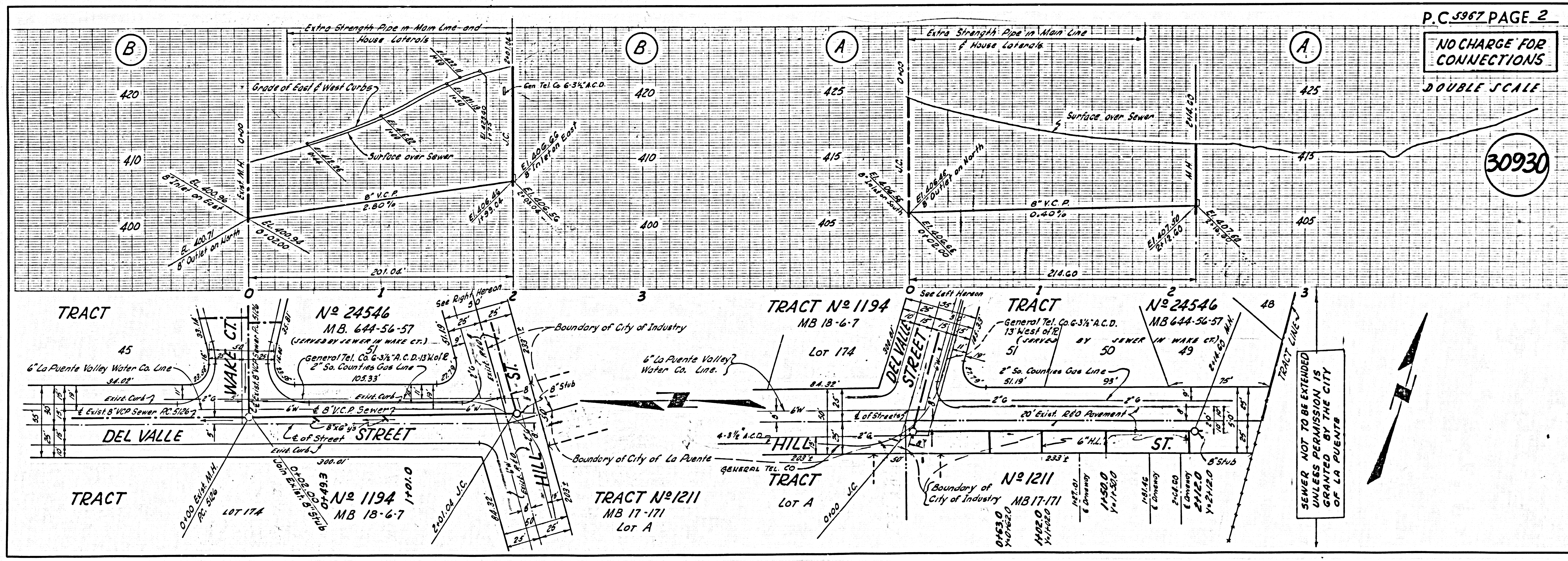
APPROVED, JOHN A. LAMBIE, CITY ENGINEER APPROVED, G.R. COMPTON, CHIEF ENGINEER

BY: *E. E. Person* ATTY. SANITATION ENGINEER BY: *G. R. Compton* OFFICE ENGINEER

CHECKED BY: *J. K. Janda* 8-15-61

OFFICE OF CITY ENGINEER, REG. C. E. NO. 5828

APPROVED: *John A. Lambie* 8-11-61 SUBMITTED, *Richard E. Huber*
CITY OF LA PUENTE ACTING SAN DIMAS REGIONAL ENGINEER



P.C. 5967 PAGE 2

NO CHARGE FOR CONNECTIONS

DOUBLE SCALE

30930

SEWER NOT TO BE EXTENDED UNLESS PERMISSION IS GRANTED BY THE CITY OF LA PUENTE