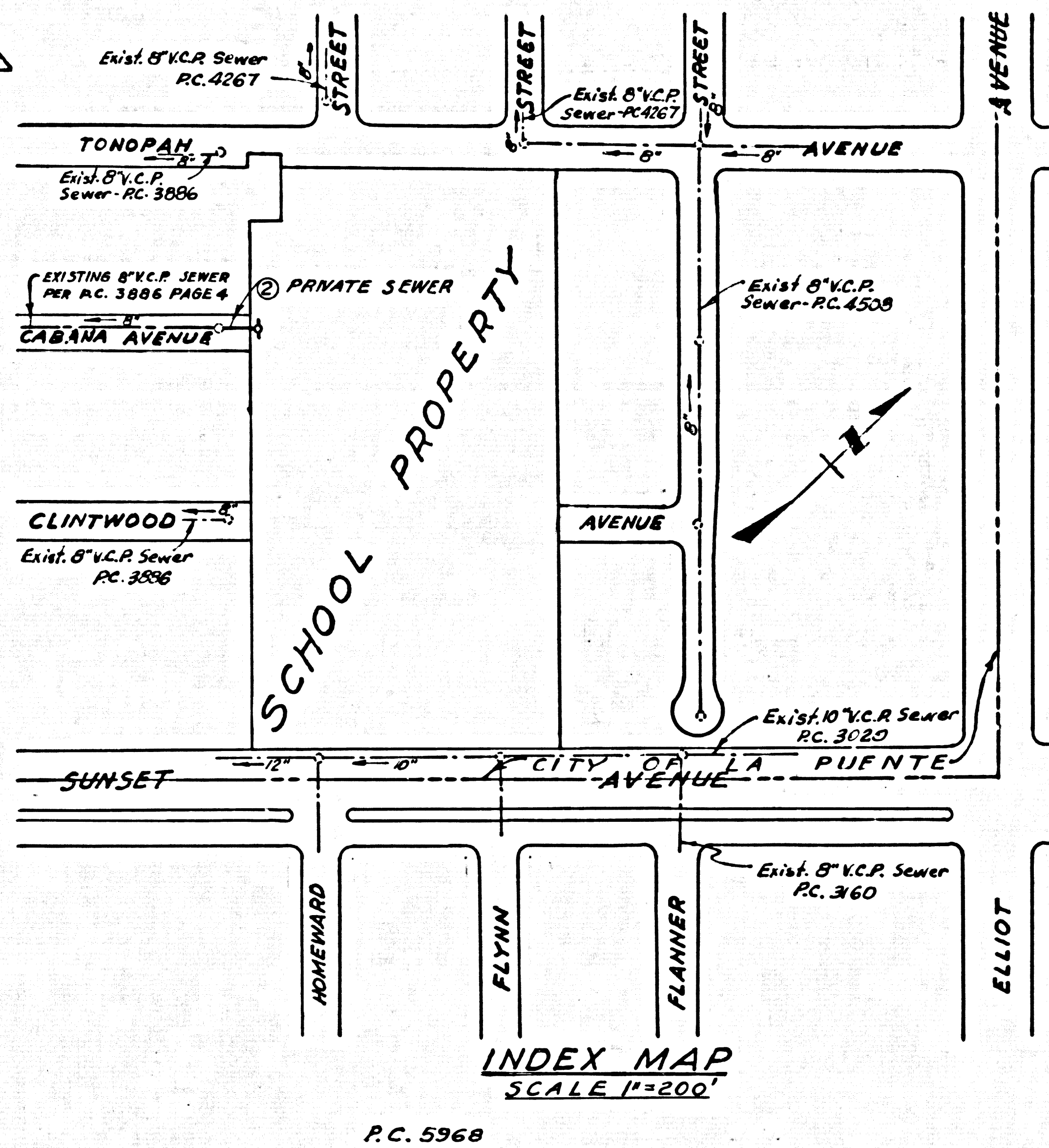


BENCH MARK: 56 1097 Reset 1955 Puente Quad
 L.A. Co. Road Dept. B.M. Tag in East Curb Sunset Avenue
 West Side of Island 40' East of & Sunset Avenue & 15' North
 of & Hutchcroft Street 15' North of House #662
 Sunset Avenue 500' North of Temple Avenue.
 ELEVATION = 311.244
 Co. Sur. Precise



LA PUENTE BLDG. DIST. NO. 2.02

- NOTES
- PROVIDE STAKES ON THE PROPERTY LINE OR PROPERTY LINES PRODUCED AT RIGHT ANGLES TO THE SEWER LINE AT THE CENTER LINE OF EACH MANHOLE.
 - NO REPRESENTATIVE OF THE CITY ENGINEER WILL SURVEY OR LAYOUT ANY PORTION OF THE WORK.
 - THE CONTRACTOR OR HIS AUTHORIZED REPRESENTATIVE SHALL FURNISH THE CITY ENGINEER WITH GRADE SHEETS AND STATIONING FOR ALL HOUSE LATERALS AND Y BRANCHES AND SHALL PROVIDE STAKES FOR THEM AT THEIR PROPER LOCATIONS WITH STATIONING PLAINLY MARKED. ANY CHANGE IN LOCATION SHALL BE REQUESTED IN WRITING BY THE OWNER OR HIS REPRESENTATIVE.
 - NO REVISIONS SHALL BE MADE IN THESE PLANS WITHOUT THE APPROVAL OF THE CITY ENGINEER.
 - USE STANDARD MANHOLE FRAMES AND COVERS, S.A. 117.
 - USE EXTRA STRENGTH PIPE. ALL PIPE STANDARD DEPTH.
 - USE CEMENT MORTAR "SPEED-SEAL" OR "WEDGE LOCK" FOR ALL WTRPRED CLAY PIPE JOINTS, SPECS. SECS. 36 & 40.
 - RESURFACE ALL TRENCH WITHIN PAVED AREA TO MEET L. A. COUNTY ROAD DEPT., OR CALIF. STATE HIGHWAY DEPT. REQUIREMENTS IN ACCORDANCE WITH PERMITS.
 - ENCASE FOUR FEET "P" SEWER AT POINTS OF INTERFERENCE WITH POLES, S.W. 172, CASE XX
 - HOUSE LATERALS TO BE CONSTRUCTED WITH INVERTS AT PROPERTY LINE FEET BELOW CURB GRADE EXCEPT AS NOTED.
 - ALL STRUCTURES SHALL BE BRICK SEWER STRUCTURES, S.A. 104
 - FOR ALLOWABLE LEAKAGE TEST USE FORMULA NO. 1 SPECS. SEC. 54
 - MANHOLE TOPS IN UNIMPROVED RIGHTS-OF-WAY TO BE FLUSH WITH FINISHED GRADE.
 - THE CONTRACTOR SHALL NOTIFY THE CONSTRUCTION DIVISION BY TELEPHONE, MADISON 9-4747 EXTENSION 8551 AT LEAST TWENTY-FOUR HOURS BEFORE STARTING ANY WORK UNDER THIS CONTRACT.
 - STANDARD SPECIFICATIONS DATED OCTOBER 10, 1960 APPLY IN THE CONSTRUCTION OF THIS PROJECT.

NO CONNECTIONS FOR THE DISPOSAL OF INDUSTRIAL WASTES SHALL BE MADE TO SEWERS SHOWN ON THESE DRAWINGS WITHOUT WRITTEN PERMISSION FROM THE CHIEF ENGINEER AND GENERAL MANAGER OF THE COUNTY SANITATION DISTRICTS.

NO CHARGE FOR CONNECTION
 779 S. Dimas 11-24-61

CITY OF LA PUENTE
 APPROVED: [Signature] 11-24-61
 CITY ENGINEER

PROFILE ALIGNMENT AND GRADE OF P.C. 5968
 SANITARY SEWERS PAGE 1
 TO BE CONSTRUCTED IN
 CABANA AVENUE
 PRIVATE SEWER

PRIVATE CONTRACT NO. 5968

W.S. 38
 1 SHEET: 2 PAGES

SCALE: VERT. 1"=4'
 HORIZ. 1"=40'
 JULY, 1961

PREPARED IN THE OFFICES OF
 KISTNER, WRIGHT AND WRIGHT
 ARCHITECTS AND ENGINEERS
 By: [Signature]
 REG. C. E. NO. 6617

31524

FOR LEGEND SEE PLAN NO. S-A-64

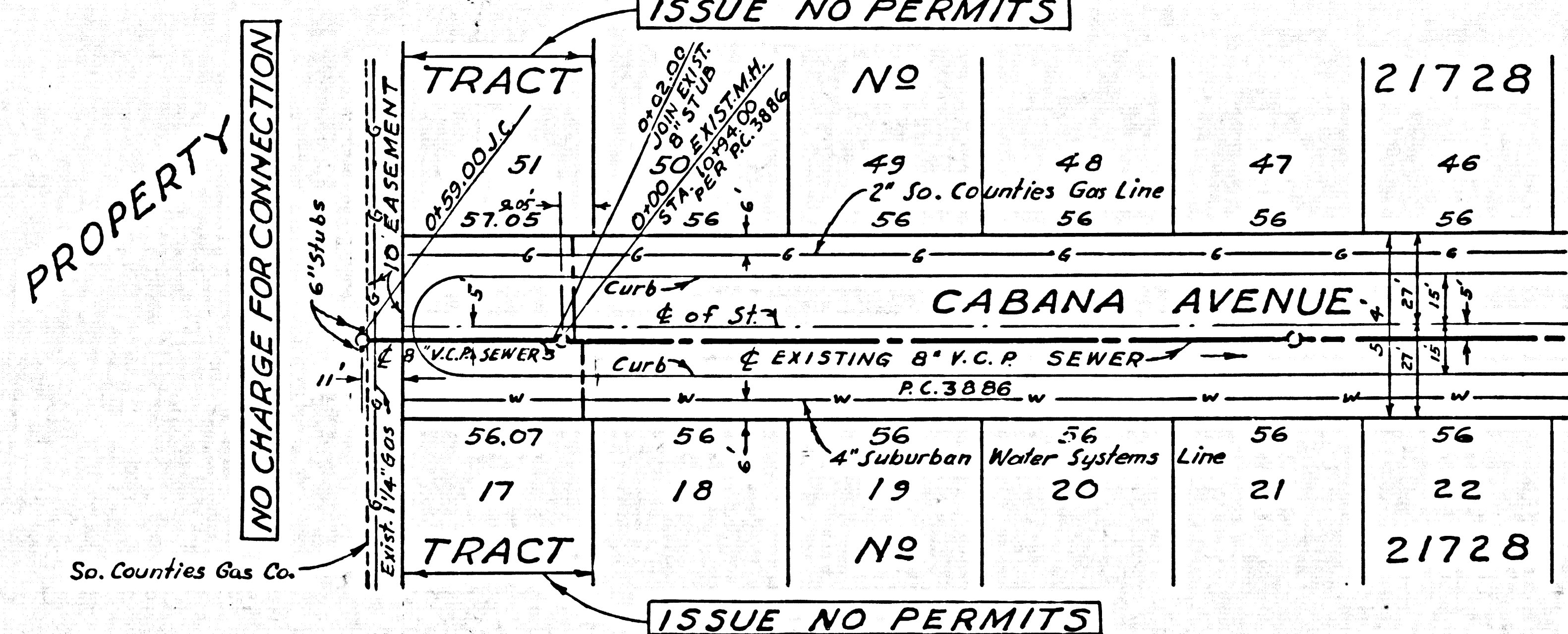
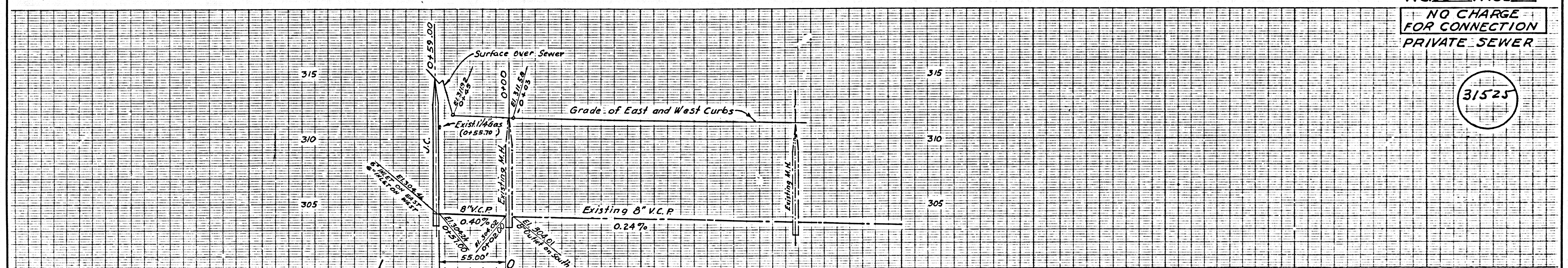
NOTE: GRADES TO WHICH THIS IMPROVEMENT IS TO BE CONSTRUCTED AND SHOWN ON PLANS AND PROFILES. GRADE POINTS FOR TOP OF CURBS, CENTER LINE OF STREETS, OR CENTER LINE OF ALLEYS ARE SHOWN BY CIRCLES ON PROFILES AT ALL POINTS BETWEEN DESIGNATED POINTS. THE GRADE SHALL BE ESTABLISHED SO AS TO CONFORM TO A STRAIGHT LINE DRAWN BETWEEN SAID DESIGNATED POINTS.
 ELEVATIONS ARE IN FEET ABOVE U.S.C. & G.S. MEAN SEA LEVEL DATUM OF 1929.
 THIS DRAWING AND THE DATA HEREON ARE HEREBY MADE A PART OF THE SPECIFICATIONS.
 WORK SHALL BE CONSTRUCTED ACCORDING TO SPECIFICATIONS ON FILE IN THE OFFICE OF THE CITY ENGINEER AND SHALL BE PROSECUTED ONLY IN THE PRESENCE OF THE CITY ENGINEER.
 BEFORE WORK CAN BE STARTED, THE CONTRACTOR MUST OBTAIN A PERMIT TO EXCAVATE IN CITY STREETS FROM THE L. A. COUNTY ROAD DEPT., DISTRICT OFFICE NO. 1 AND PAY A FEE TO THE CITY OF LA PUENTE.
 SUFFICIENT TO COVER THE COST OF CONSTRUCTION INSPECTION AND RECORD PLANS.
 APPROVAL OF THIS PLAN BY THE CITY OF LA PUENTE DOES NOT CONSTITUTE A REPRESENTATION AS TO THE ACCURACY OF THE LOCATION OF OR THE EXISTENCE OR NON-EXISTENCE OF ANY UNDERGROUND UTILITY PIPE, OR STRUCTURE WITHIN THE LIMITS OF THIS PROJECT. THIS NOTE APPLIES TO ALL PAGES.
 IF WORK IS TO BE DONE IN A STATE HIGHWAY, A PERMIT MUST BE OBTAINED FROM THE STATE OF CALIFORNIA, DIVISION OF HIGHWAYS, 128 SOUTH SPRING STREET.

CITY OF LA PUENTE, CALIFORNIA
 APPROVED: JOHN A. LAMBIE, CITY ENGINEER
 APPROVED: J.A. MURPHY, CHIEF ENGINEER
 BY: [Signature] ASST. SANITATION ENGINEER
 BY: [Signature] OFFICE ENGINEER
 CHECKED BY: B.F. Worling 11-27-61
 OFFICE OF CITY ENGINEER, REG. C. E. NO. 11636
 SUBMITTED: W.C. Rainey 11-24-61
 SAN DIMAS REGIONAL ENGINEER

P.C. 5968 PAGE 2

NO CHARGE FOR CONNECTION
 PRIVATE SEWER

31525



PROPERTY
 SCHOOL
 NO CHARGE FOR CONNECTION

ISSUE NO PERMITS

TRACT	NO	21728
51	49	47
57.05	48	46
	2" Jo. Counties Gas Line	56
	56	56
	56	56
	4" Suburban Water Systems Line	56
56.07	56	56
17	19	21
	20	22
	NO	21728

ISSUE NO PERMITS