

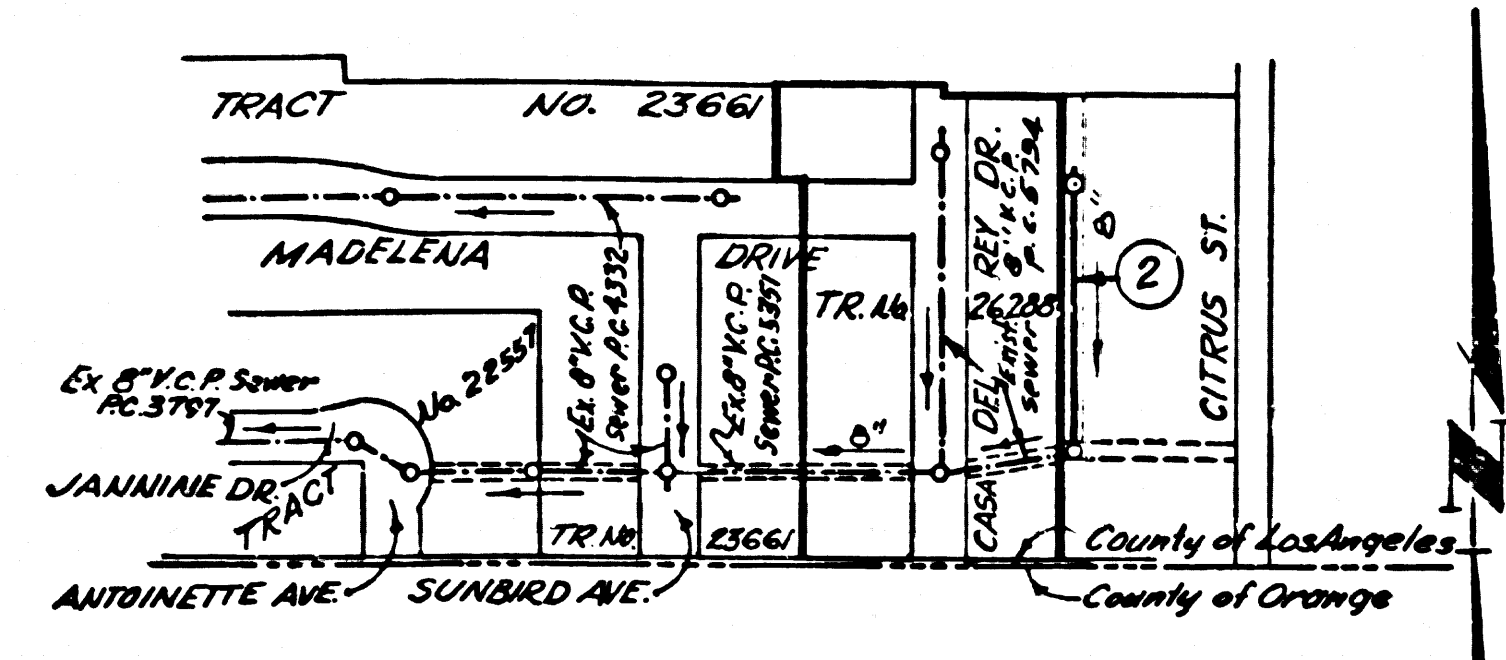
DOUBLE SCALE
WHITTIER BLDG. DIST. NO. 11

PROFILE ALIGNMENT AND GRADE OF P.C. 5978
SANITARY SEWERS PAGE 1
TO BE CONSTRUCTED IN J.N. 0356.56

(R/W W/O CITRUS ST.)
PRIVATE CONTRACT NO. 5978

W.S. 38
1 SHEETS; 2 PAGES
SCALE: VERT. 1"=8'
HORIZ. 1"=8' SEPT., 1961
PREPARED IN THE OFFICES OF
KEMMERER ENGINEERING CO., INC.
By: Robert R. Flores
REG. C. E. NO. 11349

31302



INDEX MAP
P.C. 5978 Scale: 1"=300'
J.N. 0356.56

NO CHARGE FOR CONNECTIONS
11-1-61

NOTE:
The existence and approximate location of underground utilities or structures shown on these plans were determined by a search of the available public records. To the best of our knowledge there are no existing underground utilities or structures except as shown on these plans.
The contractor is required to take due precautionary measures to protect the utilities or structures shown and any other utilities or structures at the site. It shall be the contractor's responsibility to notify the owners of the utilities or structures concerned before starting work.

- NOTES:
1. PROVIDE STAKES ON THE PROPERTY LINE OR PROPERTY LINES PRODUCED AT RIGHT ANGLES TO THE SEWER LINE AT THE CENTER LINE OF EACH MANHOLE.
 2. NO REPRESENTATIVE OF THE COUNTY ENGINEER WILL SURVEY OR LAY OUT ANY PORTION OF THE WORK.
 3. THE OWNER OR HIS AUTHORIZED REPRESENTATIVE SHALL FURNISH THE COUNTY ENGINEER WITH GRADE SHEETS AND STATIONING FOR ALL HOUSE LATERALS AND Y BRANCHES AND SHALL PROVIDE STAKES FOR THEM AT THEIR PROPER LOCATIONS WITH STATIONING PLAINLY MARKED. ANY CHANGE IN LOCATION SHALL BE REQUESTED IN WRITING BY THE OWNER OR HIS REPRESENTATIVE.
 4. THE PRIVATE ENGINEER SHALL FURNISH THE HOUSE LATERAL DEPTH AT THE PROPERTY LINE BELOW THE TOP OF CURB ELEVATION FOR EACH HOUSE LATERAL ON THE GRADE SHEET.
 5. NO REVISIONS SHALL BE MADE IN THESE PLANS WITHOUT THE APPROVAL OF THE COUNTY ENGINEER.
 6. USE STANDARD MANHOLE FRAMES AND COVERS, S-111.
 7. USE EXTRA STRENGTH PIPE. ALL PIPE IS STANDARD DEPTH.
 8. USE CEMENT MORTAR OR "WIDE-LOCK" OR "SPED-SEAL" FOR ALL V.C.P. JOINTS PER SPEC'S, SECS. 34 & 41.
 9. RESURFACE ALL TRENCH WITHIN PAVED AREA TO MEET L.A. COUNTY ROAD DEPT. OR CALIF. STATE HIGHWAY REQUIREMENTS IN ACCORDANCE WITH PERMITS.
 10. ENCASE FOUR FEET OF SEWER AT POINTS OF INTERFERENCE WITH POLES, CASE III, S-173.
 11. HOUSE LATERALS TO BE CONSTRUCTED WITH INVERTS AT PROPERTY LINE _____ FEET BELOW CURB GRADE EXCEPT AS NOTED.
 12. ALL STRUCTURES SHALL BE BRICK SEWER STRUCTURES, S-104, EXCEPT AS NOTED.
 13. FOR ALLOWABLE LEAKAGE TEST USE FORMULA NO. _____ SPEC'S, SEC. 34.
 14. MANHOLE TOPS IN UNIMPROVED HIGH S-O-F-WAY TO BE SIX INCHES ABOVE FINISHED GRADE.
 15. THE CONTRACTOR SHALL NOTIFY THE CONSTRUCTION DIVISION BY TELEPHONE, MADISON 9-4747, EXT. 81-531 AT LEAST TWENTY-FOUR HOURS BEFORE STARTING ANY WORK UNDER THIS CONTRACT.
 16. STANDARD SPECIFICATIONS DATED OCT. 25, 1961 APPLY IN THE CONSTRUCTION OF THIS PROJECT.

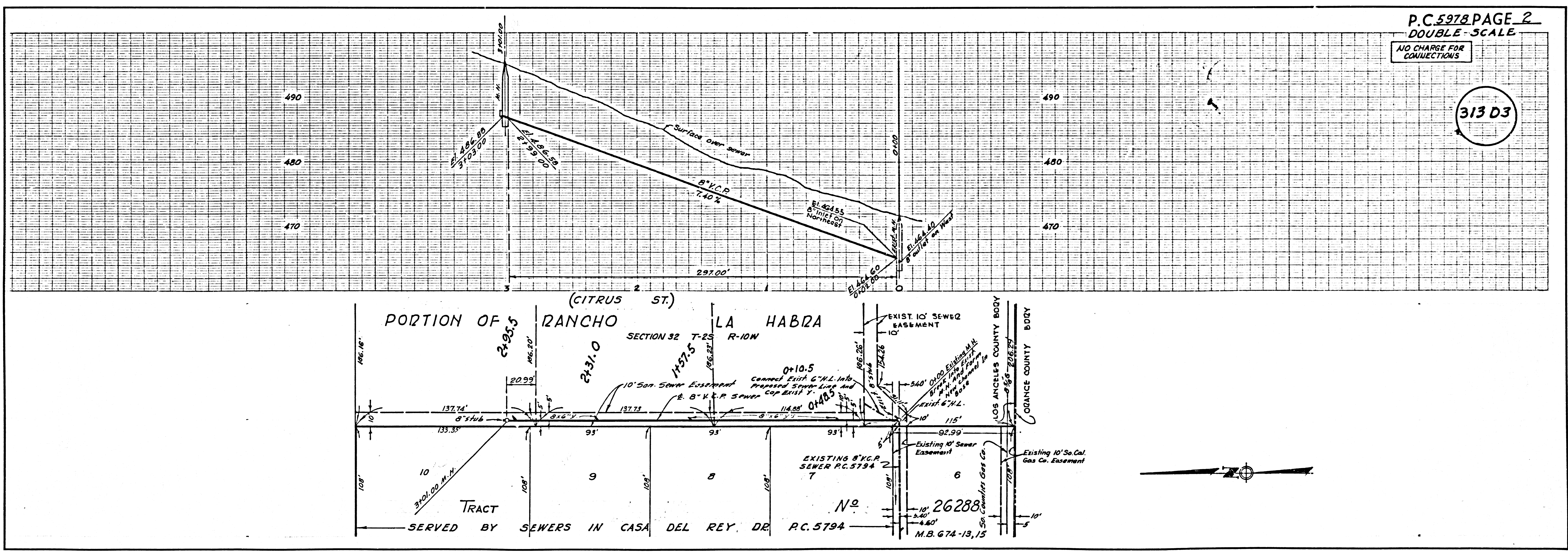
BENCH MARK F.B. 1359-B
C.S. 38-2 Hacienda Blvd & L.A. & Orange County Line Intersection. A Standard Precast Man. 15" below the surface and protected by a cast iron cover lettered "County Surveyors Monument" 1954 Adj. ELEVATION 425.003

NO CONNECTIONS FOR THE DISPOSAL OF INDUSTRIAL WASTES SHALL BE MADE TO SEWERS SHOWN ON THESE DRAWINGS WITHOUT WRITTEN PERMISSION FROM THE CHIEF ENGINEER AND GENERAL MANAGER OF THE COUNTY SANITATION DISTRICTS.

NOTE:
GRADES TO WHICH THIS IMPROVEMENT IS TO BE CONSTRUCTED ARE SHOWN ON PLANS AND PROFILES. GRADE POINTS FOR TOP OF CURBS, CENTER LINE OF STREETS, OR CENTER LINE OF ALLEYS ARE SHOWN BY CIRCLES ON PROFILES. AT ALL POINTS BETWEEN DESIGNATED POINTS THE GRADE SHALL BE ESTABLISHED SO AS TO CONFORM TO A STRAIGHT LINE DRAWN BETWEEN SAID DESIGNATED POINTS.
ELEVATIONS ARE IN FEET ABOVE U.S.C. & G.S. SEA LEVEL DATUM OF 1929.
THIS DRAWING AND THE DATA HEREON ARE HEREBY MADE A PART OF THE SPECIFICATIONS.
WORK SHALL BE CONSTRUCTED ACCORDING TO SPECIFICATIONS ON FILE IN THE OFFICE OF THE COUNTY ENGINEER AND SHALL BE PROSECUTED ONLY IN THE PRESENCE OF THE COUNTY ENGINEER.
BEFORE WORK CAN BE STARTED THE CONTRACTOR MUST OBTAIN A PERMIT TO ESCAPE IN COUNTY STREETS FROM THE L.A. COUNTY ROAD DEPT., DISTRICT OFFICE NO. 4, AND PAY A FEE TO THE COUNTY ENGINEER, ROOM 300 COUNTY ENGINEER BUILDING, 108 WEST SECOND ST. SUFFICIENT TO COVER THE COST OF CONSTRUCTION INSPECTION AND RECORD PLANS.
APPROVAL OF THIS PLAN BY THE COUNTY OF LOS ANGELES DOES NOT CONSTITUTE A REPRESENTATION AS TO THE ACCURACY OF THE LOCATION OR THE EXISTENCE OR NON-EXISTENCE OF ANY UNDERGROUND UTILITY PIPE, OR STRUCTURE WITHIN THE LIMITS OF THIS PROJECT. THIS NOTE APPLIES TO ALL PAGES.
IF WORK IS TO BE DONE IN A STATE HIGHWAY, A PERMIT MUST BE OBTAINED FROM THE STATE OF CALIFORNIA, DIVISION OF HIGHWAYS, 120 SOUTH SPRING STREET.

COUNTY OF LOS ANGELES, CALIFORNIA
APPROVED, JOHN A. LAMBIE, COUNTY ENGINEER APPROVED, J.D. PARKURST, CHIEF ENGINEER
CO. SAN. DIST. NO. 18
BY: [Signature] SANITATION ENGINEER BY: [Signature] OFFICE ENGINEER
CHECKED BY: [Signature] 11-2-61
OFFICE OF COUNTY ENGINEER, RFD. C. E. NO. 3406

SUBMITTED BY: [Signature] 11-1-61
LOS CEBITOS REGIONAL ENGINEER REG. C.E. NO. 3871



P.C. 5978 PAGE 2
DOUBLE SCALE

NO CHARGE FOR CONNECTIONS

31303