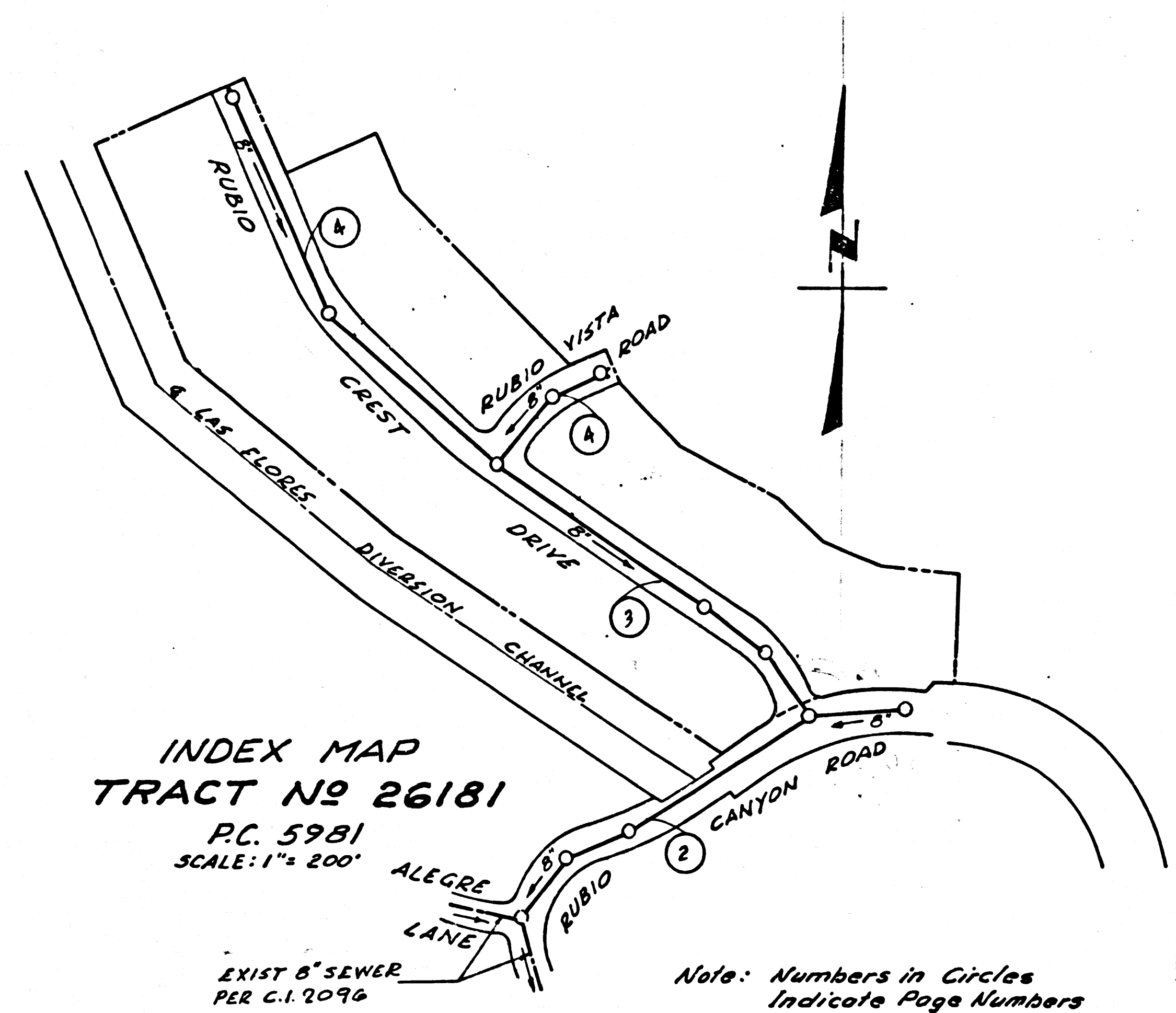


BENCH MARK:

- SV 5098 BT. SPK. IN E. CB. LAKE AVE. 15' S. OF RET. @ N.E. COR. WAPELLO ST. 1' 25" E. & 170' N. OF CL INT. MK'D. AE 597A PASADENA QUAD. 1955 ELEV. = 1599.445
- SV 5099 R.D.M. TAG IN E. CB. LAKE AVE. 2' N. OF CB. RET. @ S.E. COR. WAPELLO ST. 1' 25" E. & 136' S. OF CL INT. MK'D. AE 597A PASADENA QUAD. 1955 ELEVATION = 1599.407



DOUBLE SCALE
ALTADENA BLDG. DIST. NO. 3

PROFILE ALIGNMENT AND GRADE OF **P.C. 5981**
SANITARY SEWERS PAGE 1
TO BE CONSTRUCTED IN **J.N. 0356.58**

TRACT No 26181
PRIVATE CONTRACT NO. 5981

W.S. 88
SHEETS: 4 PAGES
SCALE: VERT. 1" = 4'
HORIZ. 1" = 40'
MAY, 1962
PREPARED IN THE OFFICES OF
MCINTIRE & QUIROS, INC.

32938

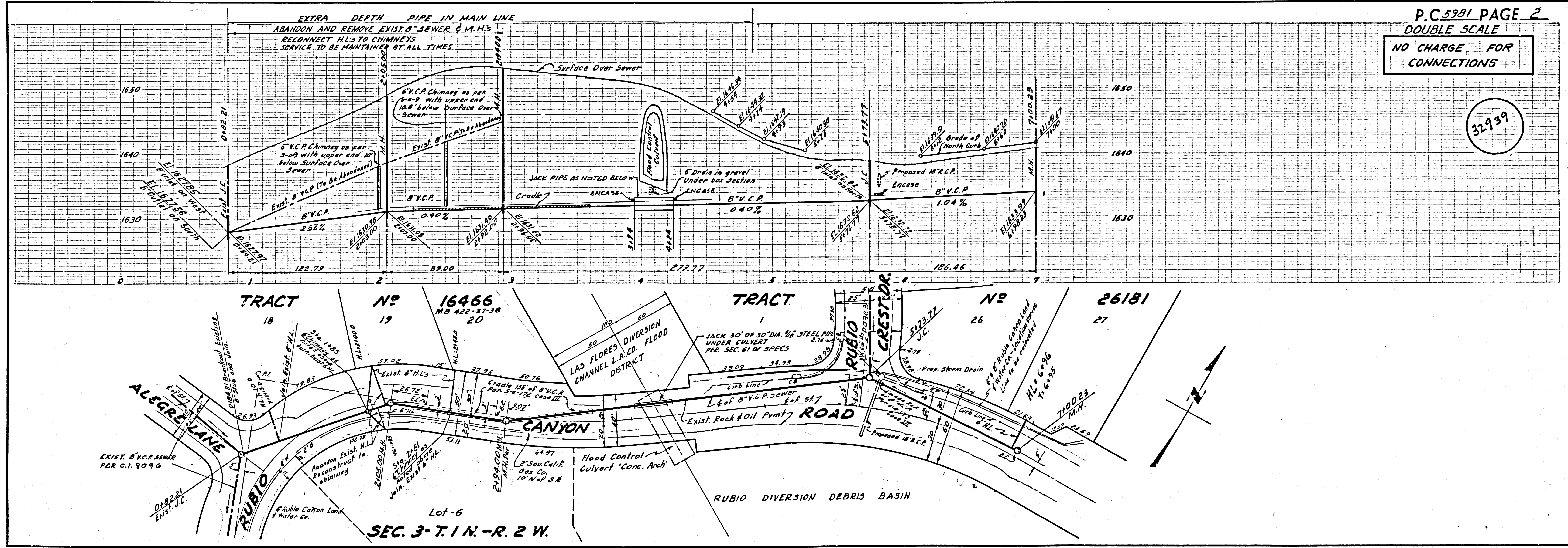
- NOTES:**
- PROVIDE STAKES ON THE PROPERTY LINE OR PROPERTY LINES PRODUCED AT RIGHT ANGLES TO THE SEWER LINE AT THE CENTER LINE OF EACH MANHOLE.
 - NO REPRESENTATIVE OF THE COUNTY ENGINEER WILL SURVEY OR LAY OUT ANY PORTION OF THE WORK.
 - THE OWNER OR HIS AUTHORIZED REPRESENTATIVE SHALL FURNISH THE COUNTY ENGINEER WITH GRADE SHEETS AND STATIONING FOR ALL HOUSE LATERALS AND Y BRANCHES AND SHALL PROVIDE STAKES FOR THEM AT THEIR PROPER LOCATIONS WITH STATIONING PLAINLY MARKED. ANY CHANGE IN LOCATION SHALL BE REQUESTED IN WRITING BY THE OWNER OR HIS REPRESENTATIVE.
 - THE PRIVATE ENGINEER SHALL FURNISH THE HOUSE LATERAL DEPTH AT THE PROPERTY LINE BELOW THE TOP OF CURB ELEVATION FOR EACH HOUSE LATERAL ON THE GRADE SHEET.
 - NO REVISIONS SHALL BE MADE IN THESE PLANS WITHOUT THE APPROVAL OF THE COUNTY ENGINEER.
 - USE STANDARD MANHOLE FRAMES AND COVERS, S-117.
 - USE EXTRA STRENGTH PIPE. ALL PIPE IS STANDARD DEPTH EXCEPT AS NOTED.
 - USE CEMENT MORTAR OR "WEDGE-LOCK" OR "SPEED-SEAL" FOR ALL V.C.P. JOINTS PER SPECS, SECS. 34 & 44, FOR MAIN LINE EXCEPT BANK.
 - RESURFACE ALL TRENCH WITHIN PAVED AREA TO MEET L.A. COUNTY ROAD DEPT. OR CALIF. STATE HIGHWAY REQUIREMENTS IN ACCORDANCE WITH PERMITS.
 - ENCASE FOUR FEET OF SEWER AT POINTS OF INTERFERENCE WITH POLES, CASE III, S-172.
 - HOUSE LATERALS TO BE CONSTRUCTED WITH INVERTS AT PROPERTY LINE 6 FEET BELOW CURB GRADE EXCEPT AS NOTED.
 - FOR ALLOWABLE LEAKAGE TEST USE FORMULA NO. 1, SPECS, SEC. 34.
 - MANHOLE TOPS IN UNIMPROVED RIGHTS-OF-WAY TO BE SIX INCHES ABOVE FINISHED GRADE.
 - THE CONTRACTOR SHALL NOTIFY THE CONSTRUCTION DIVISION BY TELEPHONE, MADISON 9-4741, EXT 8151 AT LEAST TWENTY-FOUR HOURS BEFORE STARTING ANY WORK UNDER THIS CONTRACT.
 - MANHOLES SHALL BE BRICK SEWER STRUCTURES PER S.O. 104 PRECAST CONC. MANHOLES PER S.O. 135 OR S.O. 173 MAY BE USED AS AN ALTERNATE IN LOCATIONS APPROVED BY THE COUNTY ENGINEER.
 - NO CONSTRUCTION SHALL BE PERMITTED IN THE FILLED AREA UNLESS ACCEPTABLE CERTIFICATION IS SUBMITTED TO THE CONSTRUCTION DIVISION OF THE COUNTY ENGINEER'S DEPARTMENT THAT RELATIVE COMPACTION IS GREATER THAN 85%.
 - IF COMPACTION IS LESS THAN 90% THE SEWER MUST BE CRADLED AS SHOWN ON THE PLANS PER S-116, AND MANHOLE BASE SHALL BE CONSTRUCTED PER S-113.
 - IF COMPACTION IS GREATER THAN 90% CRADLING AND SPECIAL M.H. BASE ARE NOT REQUIRED, HOWEVER "WEDGE LOCK" OR "SPEED SEAL" MUST BE SUBSTITUTED FOR CEMENT MORTAR IN ALL JOINTS IN THE FILLED AREAS.
 - USE MECHANICAL COMPRESSION JOINTS FOR ALL V.C.P. HOUSE LATERALS.
 - SPECIFICATIONS DATED MAY 25, 1962 APPLY IN THE CONSTRUCTION OF THIS PROJECT.

NOTE:
GRADES TO WHICH THIS IMPROVEMENT IS TO BE CONSTRUCTED ARE SHOWN ON PLANS AND PROFILES. GRADE POINTS FOR TOP OF CURBS, CENTER LINE OF STREETS, OR CENTER LINE OF ALLEYS ARE SHOWN BY CIRCLES ON PROFILES. AT ALL POINTS BETWEEN DESIGNATED POINTS THE GRADE SHALL BE ESTABLISHED SO AS TO CONFORM TO A STRAIGHT LINE DRAWN BETWEEN SAID DESIGNATED POINTS.
ELEVATIONS ARE IN FEET ABOVE U.S.C. & G.S. SEA LEVEL DATUM OF 1929.
THIS DRAWING AND THE DATA HEREON ARE HEREBY MADE A PART OF THE SPECIFICATIONS. WORK SHALL BE CONSTRUCTED ACCORDING TO SPECIFICATIONS ON FILE IN THE OFFICE OF THE COUNTY ENGINEER AND SHALL BE PROSECUTED ONLY IN THE PRESENCE OF THE COUNTY ENGINEER.
BEFORE WORK CAN BE STARTED, THE CONTRACTOR MUST OBTAIN A PERMIT TO EXCAVATE IN COUNTY STREETS FROM THE L.A. COUNTY ROAD DEPT., DISTRICT OFFICE NO. 2, AND PAY A FEE TO THE COUNTY ENGINEER, ROOM 310 CO. BLDG. 108 N. 2ND. STREET SUFFICIENT TO COVER THE COST OF CONSTRUCTION INSPECTION AND RECORD PLANS.
APPROVAL OF THIS PLAN BY THE COUNTY OF LOS ANGELES DOES NOT CONSTITUTE A REPRESENTATION AS TO THE ACCURACY OF THE LOCATION OR THE EXISTENCE OR NON-EXISTENCE OF ANY UNDERGROUND UTILITY PIPE, OR STRUCTURE WITHIN THE LIMITS OF THIS PROJECT. THIS NOTE APPLIES TO ALL PAGES.
IF WORK IS TO BE DONE IN A STATE HIGHWAY, A PERMIT MUST BE OBTAINED FROM THE STATE OF CALIFORNIA, DIVISION OF HIGHWAYS, 120 SOUTH SPRING STREET.

COUNTY OF LOS ANGELES, CALIFORNIA
APPROVED, JOHN A. LAMBIE, COUNTY ENGINEER
APPROVED, JOHN D. PARKHURST, CHIEF ENGINEER
BY: *[Signature]* ASST. SANITATION ENGINEER
BY: *[Signature]* OFFICE ENGINEER
CHECKED BY: *[Signature]*
OFFICE OF COUNTY ENGINEER, REG. C. E. NO. 2604
SUBMITTED *[Signature]* SAN GABRIEL VALLEY REGIONAL ENGINEER

NO CHARGE FOR CONNECTIONS
[Signature] 6/14/62

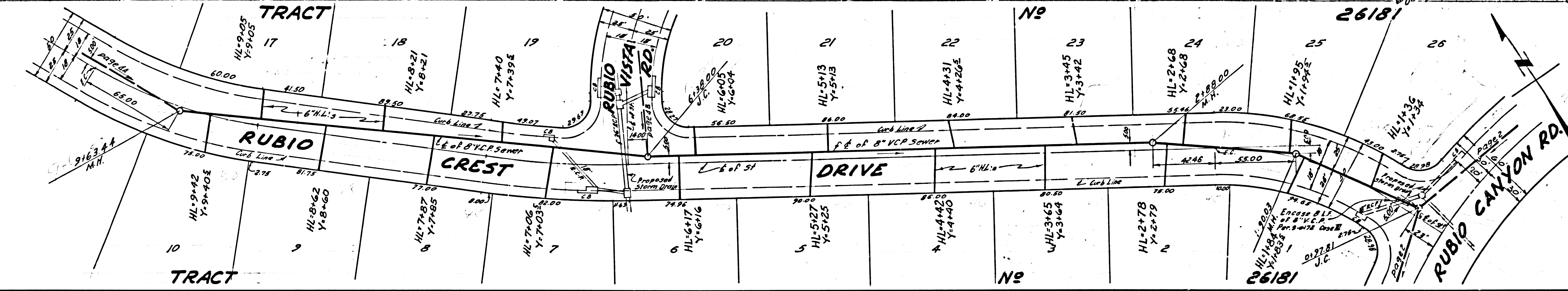
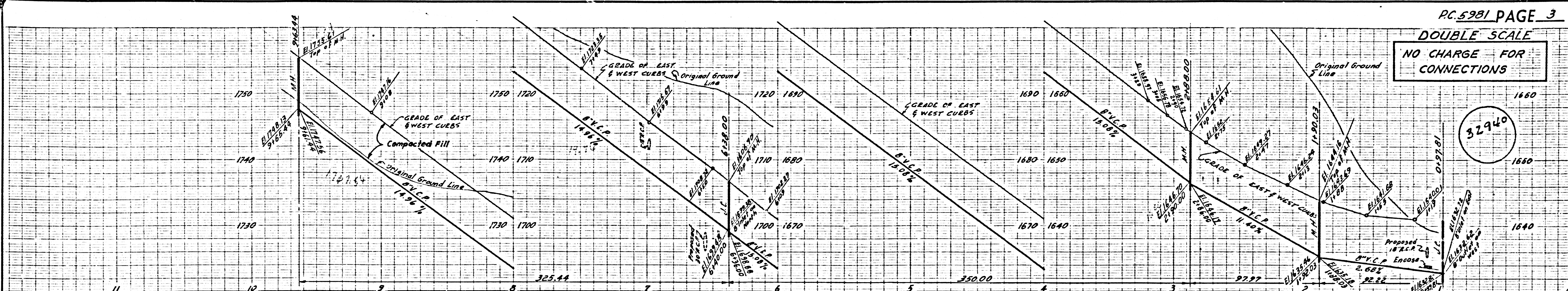
NO CONNECTIONS FOR THE DISPOSAL OF INDUSTRIAL WASTES SHALL BE MADE TO SEWERS SHOWN ON THESE DRAWINGS WITHOUT WRITTEN PERMISSION FROM THE CHIEF ENGINEER AND GENERAL MANAGER OF THE COUNTY SANITATION DISTRICTS.



P.C. 5981 PAGE 2
DOUBLE SCALE
NO CHARGE FOR CONNECTIONS

32939

DOUBLE SCALE
NO CHARGE FOR CONNECTIONS



DOUBLE SCALE
NO CHARGE FOR CONNECTIONS

