

INDEX MAP
SCALE 1"=600'
P.C. 5985

BENCH MARK: T.F. 273 Elev. 340.016'
At Willow Ave And Allwood St. S.E.
Cor. Bond Spk. In L. 5 ft. East of End of
Curb Return C.S.F.B. 1965 P. 236.

PUEENTE BLDG. DIST. NO. 2

- NOTES
- PROVIDE STAKES ON THE PROPERTY LINE OR PROPERTY LINES PRODUCED AT RIGHT ANGLES TO THE SEWER LINE AT THE CENTER LINE OF EACH MANHOLE.
 - NO REPRESENTATIVE OF THE COUNTY ENGINEER WILL SURVEY OR LAYOUT ANY PORTION OF THE WORK.
 - THE OWNER OR HIS AUTHORIZED REPRESENTATIVE SHALL FURNISH THE COUNTY ENGINEER WITH GRADE SHEETS AND STATION FOR ALL HOUSE LATERALS AND Y BRANCHES AND SHALL PROVIDE STAKES FOR THEM AT THEIR PROPER LOCATIONS WITH STATIONING PLAINLY MARKED. ANY CHANGE IN LOCATION SHALL BE REQUESTED IN WRITING BY THE OWNER OR HIS REPRESENTATIVE. NO REVISIONS SHALL BE MADE IN THESE PLANS WITHOUT THE APPROVAL OF THE COUNTY ENGINEER.
 - USE STANDARD MANHOLE FRAMES AND COVERS, S.A. 1117.
 - USE EXTRAN STRENGTH PIPE, ALL PIPE STANDARD DEPTH.
 - USE CEMENT MORTAR "beds, 2" thick, of Spread-Sand" Per A.C.I. V.C.P. Joint Per Spec. Sect. 36498.
 - RESURFACE ALL TRENCH WITHIN PAVED AREA TO MEET L.A. COUNTY ROAD DEPT. OR CALIF. STATE HIGHWAY DEPT. REQUIREMENTS IN ACCORDANCE WITH PERMITS.
 - ENCASE FOUR FEET OF SEWER AT POINTS OF INTERFERENCE WITH POLES, S.A. 1172, CASE III.
 - MANHOLES SHALL BE BRICK SEWER STRUCTURES, PER S.A. 1117, CONCRETE MANHOLE PER S.A. 1135 OR S.A. 1138 MAY BE USED AS AN ALTERNATE IN LOCATIONS APPROVED BY THE COUNTY ENGINEER.
 - FOR ALLOWABLE LEAKAGE TEST USE FORMER NO. 1 SPEC. SEC. 55.
 - MANHOLE TOPS IN UNIMPROVED RIGHTS OF WAY TO BE LEVEL WITH FINISHED GRADE.
 - The Private Engineer Shall Furnish The House Lateral Depth At The Property Line Below The Top Of Curb Elevation For Each House Lateral Shown On The Grade Sheet.
 - The Contractor Shall Notify The Construction Division By Telephone M.A. 3-4747 Extension 81551 At Least 24 hrs. Before Starting Any Work Under This Contract.
 - Standard Specifications Dated October 25, 1961, Apply In The Construction Of This Project.
 - Notify Suburban Water Systems, Telephone ED-6-1231 Mr. Hollingsworth, 48 Hours Prior To Construction.
- NO CONNECTIONS FOR THE DISPOSAL OF INDUSTRIAL WASTES SHALL BE MADE TO SEWERS SHOWN ON THESE DRAWINGS WITHOUT WRITTEN PERMISSION FROM THE CHIEF ENGINEER AND GENERAL MANAGER OF THE COUNTY SANITATION DISTRICTS.

CITY OF WEST COVINA
APPROVED: R.E. PONTREAU RE 2326 12/11/61

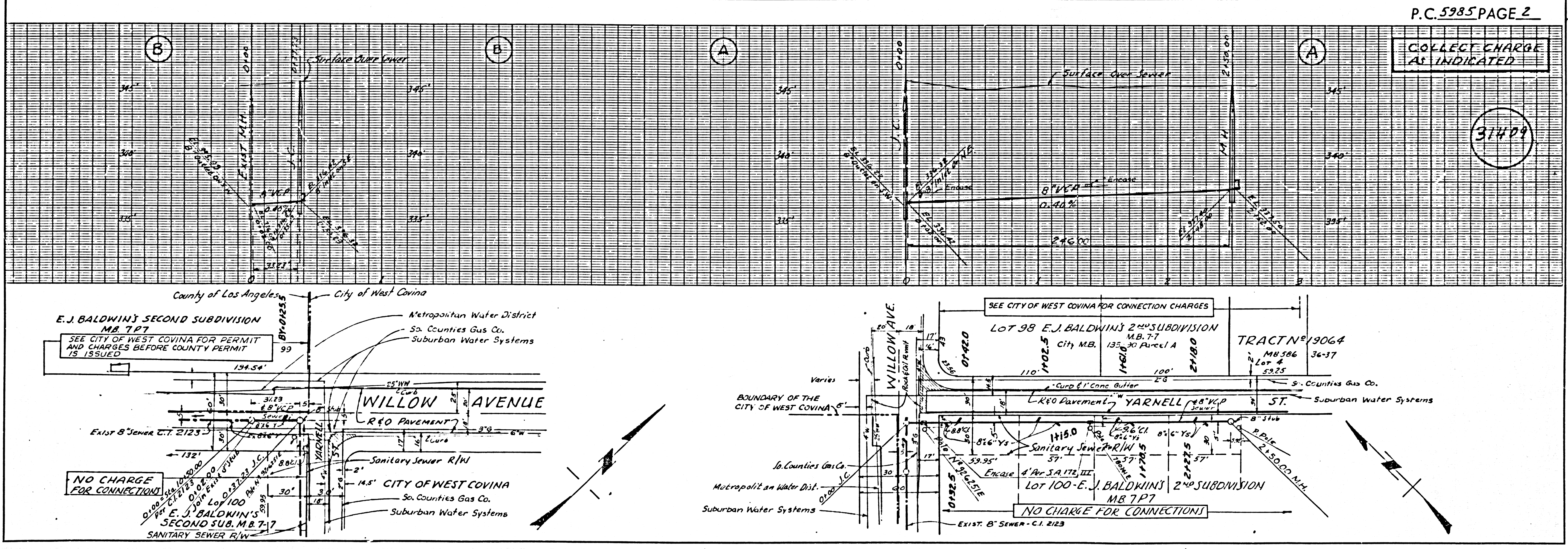
COLLECT CHARGE AS INDICATED
7.215.00

PROFILE ALIGNMENT AND GRADE OF P.C. 5985
SANITARY SEWERS PAGE 1
TO BE CONSTRUCTED IN
WILLOW AVENUE AND PORTION OF LOT 100
OF E. J. BALDWIN'S 2ND SUB. OF PART OF RO. LA
PUEENTE M.B. 7 PAGE 7.

PRIVATE CONTRACT NO. 5985
W.S. 46
1 SHEET, 2 PAGES
SCALE: VERT. 1"=4' HORIZ. 1"=40' AUG. 17, 1961 31408
PREPARED IN THE OFFICES OF
STRECKER ASSOCIATES INC.
By John A. Alford REG. C. E. NO. 8638
FOR LEGEND SEE PLAN NO. S-A-64

NOTE
GRADES TO WHICH THIS IMPROVEMENT IS TO BE CONSTRUCTED ARE SHOWN ON PLANS AND PROFILES. GRADE POINTS FOR TOP OF CURB, CENTER LINE OF STREETS, OR CENTER LINE OF ALLEYS ARE SHOWN BY CIRCLES ON PROFILES AT ALL POINTS BETWEEN DESIGNATED POINTS. THE GRADE SHALL BE ESTABLISHED SO AS TO CONFORM TO A STRAIGHT LINE DRAWN BETWEEN SAID DESIGNATED POINTS.
ELEVATIONS ARE IN FEET ABOVE U.S.C. & G.S. SEA LEVEL DATUM OF 1929.
THIS DRAWING AND THE DATA HEREON ARE HEREBY MADE A PART OF THE SPECIFICATIONS.
WORK SHALL BE CONSTRUCTED ACCORDING TO SPECIFICATIONS ON FILE IN THE OFFICE OF THE COUNTY ENGINEER AND SHALL BE PROSECUTED ONLY IN THE PRESENCE OF THE COUNTY ENGINEER.
BEFORE WORK CAN BE STARTED, THE CONTRACTOR MUST OBTAIN A PERMIT TO EXCAVATE IN CITY STREETS FROM THE CITY OF WEST COVINA AND PAY A FEE TO THE COUNTY ENGINEER ROOM 810 W. 4th ST. CIVIL ENGR. BLDG. LOS AN. 2ND ST. SUFFICIENT TO COVER THE COST OF CONSTRUCTION INSPECTION AND RECORD PLANS.
APPROVAL OF THIS PLAN BY THE COUNTY OF LOS ANGELES DOES NOT CONSTITUTE A REPRESENTATION AS TO THE ACCURACY OF THE LOCATION OR THE EXISTENCE OR NON-EXISTENCE OF ANY UNDERGROUND UTILITY PIPE, OR STRUCTURE WITHIN THE LIMITS OF THIS PROJECT. THIS NOTE APPLIES TO ALL PAGES.
IF WORK IS TO BE DONE IN A STATE HIGHWAY, A PERMIT MUST BE OBTAINED FROM THE STATE OF CALIFORNIA, DIVISION OF HIGHWAYS, 120 SOUTH SPRING STREET.

COUNTY OF LOS ANGELES, CALIFORNIA
APPROVED, JOHN A. LAMBIE, COUNTY ENGINEER
APPROVED, J.D. PARKER, CHIEF ENGINEER
BY: R. E. PONTREAU ASST. SANITATION ENGINEER
CHECKED BY: R. K. Onda 12-12-61 OFFICE ENGINEER
SUBMITTED: Robert M. Singleton SAN DIMAS REGIONAL OFFICE
OFFICE OF COUNTY ENGINEER, REG. C. E. NO. 2406



P.C. 5985 PAGE 2
COLLECT CHARGE AS INDICATED
31409

