

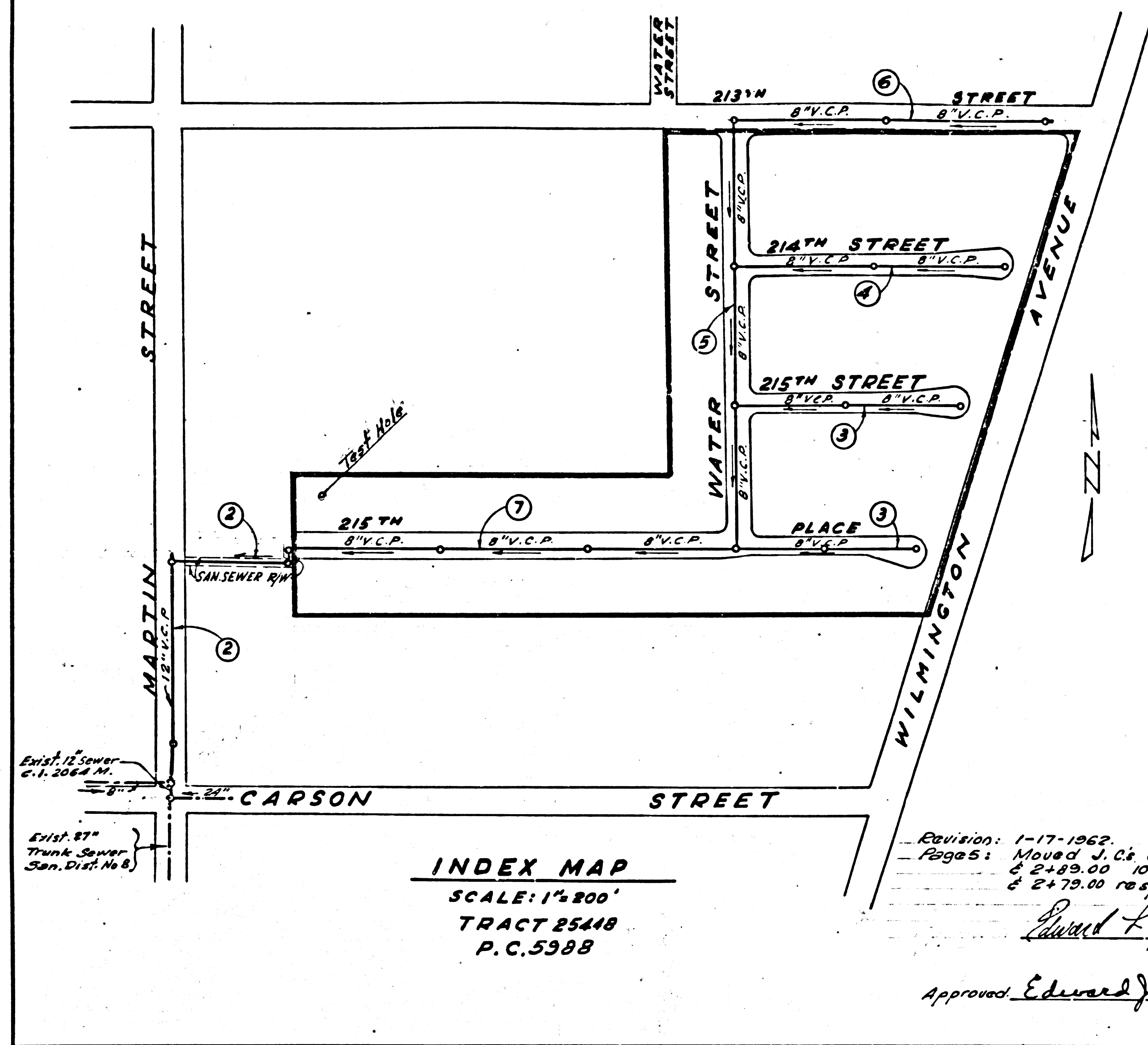
LOMITA BLDG. DIST. NO. 12

PROFILE ALIGNMENT AND GRADE OF P.C. 5986  
 SANITARY SEWERS PAGE 1  
 TO BE CONSTRUCTED IN U.N. 0356.64

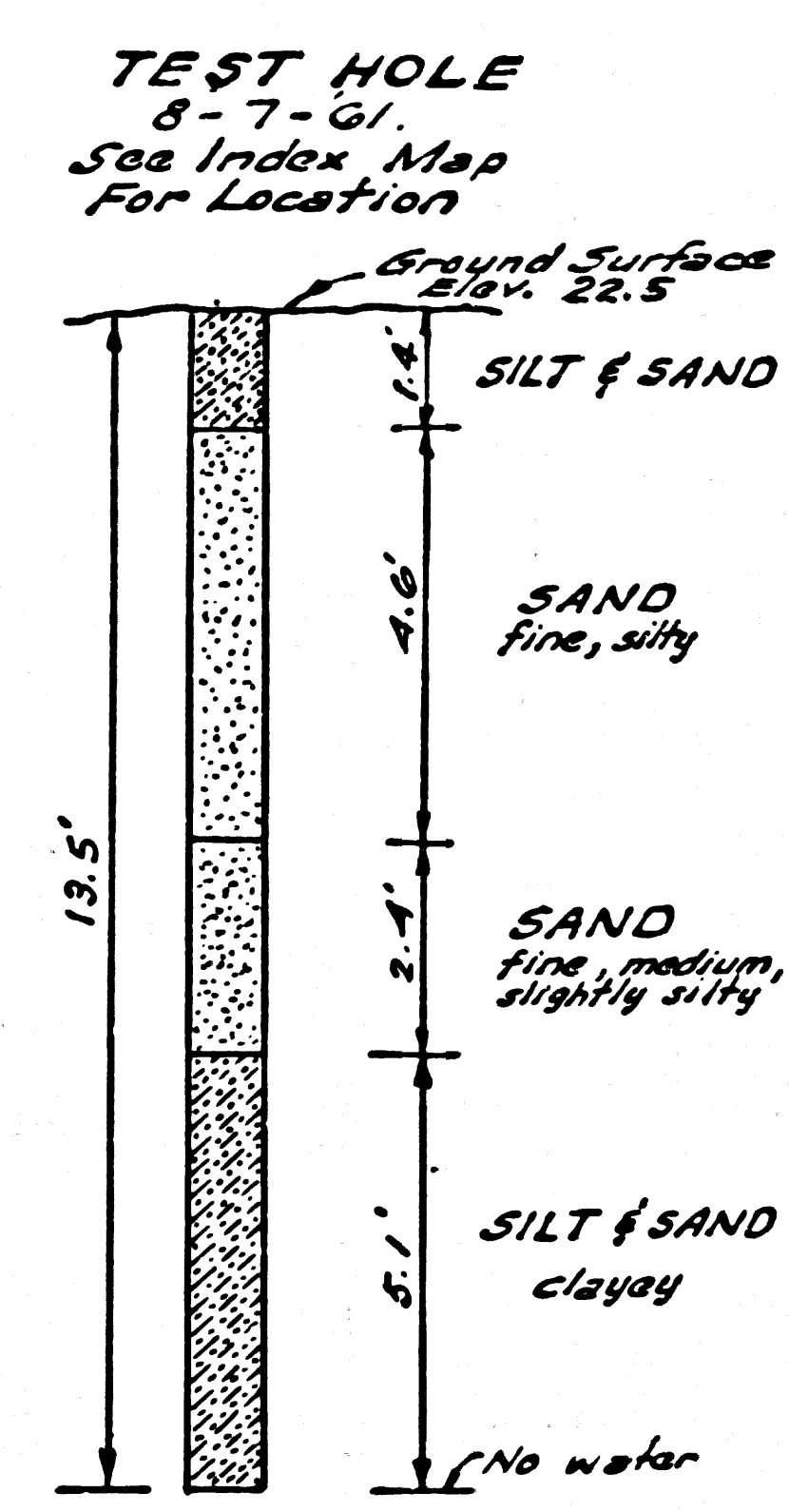
TRACT No 25448  
 PRIVATE CONTRACT NO. 5988

W.S. 28  
 4 SHEETS, 7 PAGES  
 SCALE: VERT. 1"=4' August, 1961  
 HORIZ. 1"=40'  
 PREPARED IN THE OFFICES OF  
 BARCLAY PEARSON CO., INC.  
 BY: Edward J. Pearson  
 REG. C. E. NO. 3283  
 FOR LEGEND SEE PLAN NO. S-A-64

31702



INDEX MAP  
 SCALE: 1"=800'  
 TRACT 25448  
 P.C. 5988



- NOTES:
1. PROVIDE STAKES ON THE PROPERTY LINE OR PROPERTY LINES PRODUCED AT RIGHT ANGLES TO THE SEWER LINE AT THE CENTER LINE OF EACH MANHOLE.
  2. NO REPRESENTATIVE OF THE COUNTY ENGINEER WILL SURVEY OR LAY OUT ANY PORTION OF THE WORK.
  3. THE OWNER OR HIS AUTHORIZED REPRESENTATIVE SHALL FURNISH THE COUNTY ENGINEER WITH GRADE SHEETS AND STATIONING FOR ALL HOUSE LATERALS AND Y BRANCHES AND SHALL PROVIDE STAKES FOR THEM AT THEIR PROPER LOCATIONS WITH STATIONING PLAINLY MARKED. ANY CHANGE IN LOCATION SHALL BE REQUESTED IN WRITING BY THE OWNER OR HIS REPRESENTATIVE.
  4. THE PRIVATE ENGINEER SHALL FURNISH THE HOUSE LATERAL DEPTH AT THE PROPERTY LINE BELOW THE TOP OF CURB ELEVATION FOR EACH HOUSE LATERAL ON THE GRADE SHEET.
  5. NO REVISIONS SHALL BE MADE IN THESE PLANS WITHOUT THE APPROVAL OF THE COUNTY ENGINEER.
  6. USE STANDARD MANHOLE FRAMES AND COVERS, S-117.
  7. USE EXTRA STRENGTH PIPE SHALL BE STANDARD DEPTH, EXCEPT AS NOTED.
  8. USE "WEDGELOCK" OR "SPEED-SEAL" FOR ALL V.C.P. JOINTS PER SPECS., SECS. 34 & 48.
  9. RESURFACE ALL TRENCH WITHIN PAVED AREA TO MEET L.A. COUNTY ROAD DEPT. OR CALIF. STATE HIGHWAY REQUIREMENTS IN ACCORDANCE WITH PERMITS.
  10. ENCASE FOUR FEET OF SEWER AT POINTS OF INTERFERENCE WITH POLES, CASE III, S-172.
  11. HOUSE LATERALS TO BE CONSTRUCTED WITH INTERVALS AT PROPERTY LINE, 6 FEET BELOW CURB GRADE EXCEPT AS NOTED.
  12. ALL STRUCTURES SHALL BE BRICK SEWER STRUCTURES, S-104.
  13. 1" ALLOWABLE LEAKAGE TEST USE FORMULA NO. 2, SPEC'S, SEC. 84.
  14. MANHOLE TOPS IN UNIMPROVED RIGHTS-OF-WAY TO BE SIX INCHES ABOVE FINISHED GRADE.
  15. THE CONTRACTOR SHALL NOTIFY THE CONSTRUCTION DIVISION BY TELEPHONE, MADISON 9-4747, EXT. 8155 AT LEAST TWENTY-FOUR HOURS BEFORE STARTING ANY WORK UNDER THIS CONTRACT.
  16. STANDARD SPECIFICATIONS DATED OCT. 19, 1960 APPLY IN THE CONSTRUCTION OF THIS PROJECT.
  17. ALL THE LOCATIONS SHOWN FOR EXISTING SUBSTRUCTURES HAVE BEEN TAKEN FROM RECORDS AND THEIR CORRECTNESS AND COMPLETENESS IS IN NO WAY GUARANTEED. IT SHALL BE THE CONTRACTOR'S RESPONSIBILITY ALONE TO DEFINITELY LOCATE ALL UNDERGROUND LINES OF EVERY NATURE WHETHER SHOWN HEREON OR NOT AND PROTECT THEM FROM DAMAGE. THE CONTRACTOR SHALL BEAR THE TOTAL EXPENSE OF REPAIR TO ANY LINE DAMAGED BY ANY OPERATION IN CONNECTION WITH THE PROSECUTION OF THIS WORK.

NO CONNECTIONS FOR THE DISPOSAL OF INDUSTRIAL WASTES SHALL BE MADE TO SEWERS SHOWN ON THESE DRAWINGS WITHOUT WRITTEN PERMISSION FROM THE CHIEF ENGINEER AND GENERAL MANAGER OF THE COUNTY SANITATION DISTRICTS.

BENCH MARK

Spk in conc. paving 15' West of Wilmington Ave. 100' from Int. with 213 W. Street. SY. 273 Elev. 23.601

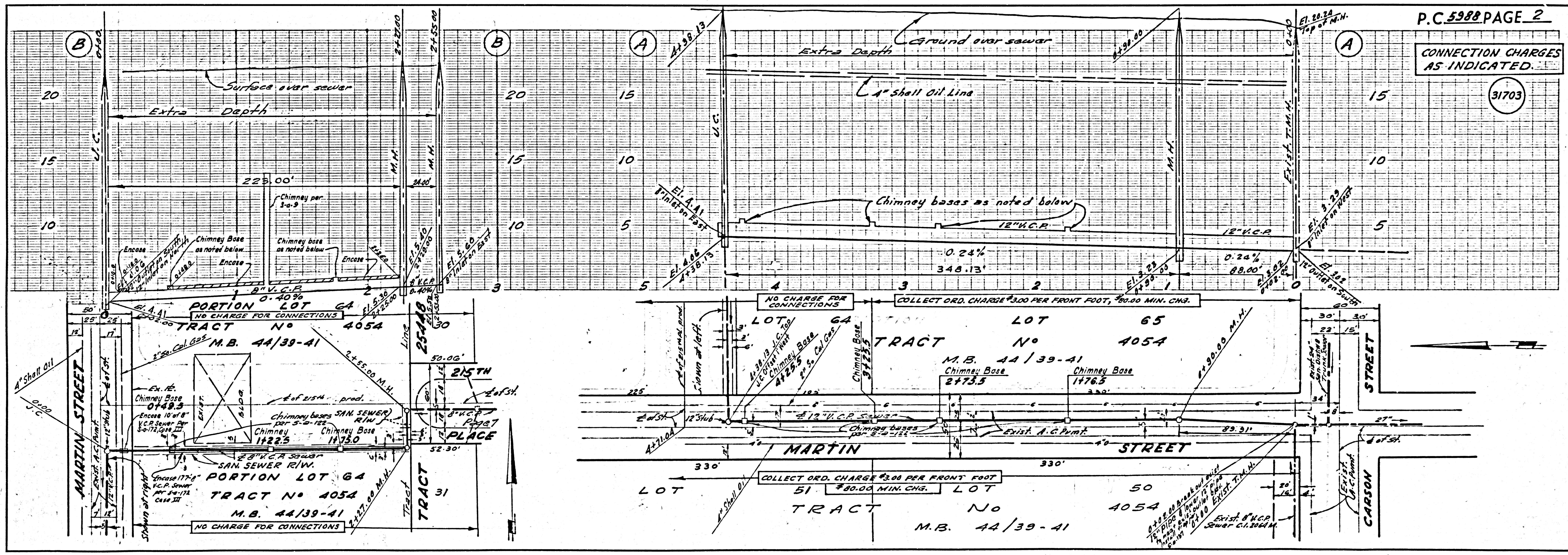
CONNECTION CHARGES AS INDICATED  
 L. Curtis 10-3-61

Revision: 1-17-1962.  
 Moved J.C. @ Sta 5+65.00  
 2+49.00 to 10' shy to Sta 5+155.00  
 & 2+72.00 respectively.  
 Approved: Edward J. Smith  
 E.C.E. 0783

NOTES:  
 GRADES TO WHICH THIS IMPROVEMENT IS TO BE CONSTRUCTED ARE SHOWN ON PLANS AND PROFILES. GRADE POINTS FOR TOP OF CURB, CENTER LINE OF STREETS, OR CENTER LINE OF ALLEYS ARE SHOWN BY CIRCLES ON PROFILES. AT ALL POINTS BETWEEN DESIGNATED POINTS THE GRADE SHALL BE ESTABLISHED SO AS TO CONFORM TO A STRAIGHT LINE DRAWN BETWEEN SAID DESIGNATED POINTS.  
 ELEVATIONS ARE IN FEET ABOVE U.S.C. & G.S. SEA LEVEL DATUM OF 1929.  
 THIS DRAWING AND THE DATA HEREON ARE HEREBY MADE A PART OF THE SPECIFICATIONS.  
 WORK SHALL BE CONSTRUCTED ACCORDING TO SPECIFICATIONS ON FILE IN THE OFFICE OF THE COUNTY ENGINEER AND SHALL BE PROSECUTED ONLY IN THE PRESENCE OF THE COUNTY ENGINEER.  
 BEFORE WORK CAN BE STARTED, THE CONTRACTOR MUST OBTAIN A PERMIT TO EXCAVATE IN COUNTY STREETS FROM THE L.A. COUNTY ROAD DEPT., DISTRICT OFFICE NO. 3 AND PAY A FEE TO THE COUNTY ENGINEER ROOM 316 COUNTY ENGINEER BLDG., 100 W. 2ND STREET, SUFFICIENT TO COVER THE COST OF CONSTRUCTION INSPECTION AND RECORD PLANS.  
 APPROVAL OF THIS PLAN BY THE COUNTY OF LOS ANGELES DOES NOT CONSTITUTE A REPRESENTATION AS TO THE ACCURACY OF THE LOCATION OF OR THE EXISTENCE OR NON-EXISTENCE OF ANY UNDERGROUND UTILITY PIPE, OR STRUCTURE WITHIN THE LIMITS OF THIS PROJECT. THIS NOTE APPLIES TO ALL PAGES.  
 IF WORK IS TO BE DONE IN A STATE HIGHWAY, A PERMIT MUST BE OBTAINED FROM THE STATE OF CALIFORNIA, DIVISION OF HIGHWAYS, 120 SOUTH SPRING STREET.

COUNTY OF LOS ANGELES, CALIFORNIA  
 APPROVED: JOHN A. LAMBIE, COUNTY ENGINEER  
 APPROVED: J.D. PIERKALSKI, CHIEF ENGINEER  
 BY: E. Hughes  
 SANITATION ENGINEER  
 BY: J. C. Pearson  
 OFFICE ENGINEER  
 CHECKED BY: J. C. Pearson 10-10-61  
 OFFICE OF COUNTY ENGINEER, REG. C. E. NO. 3406

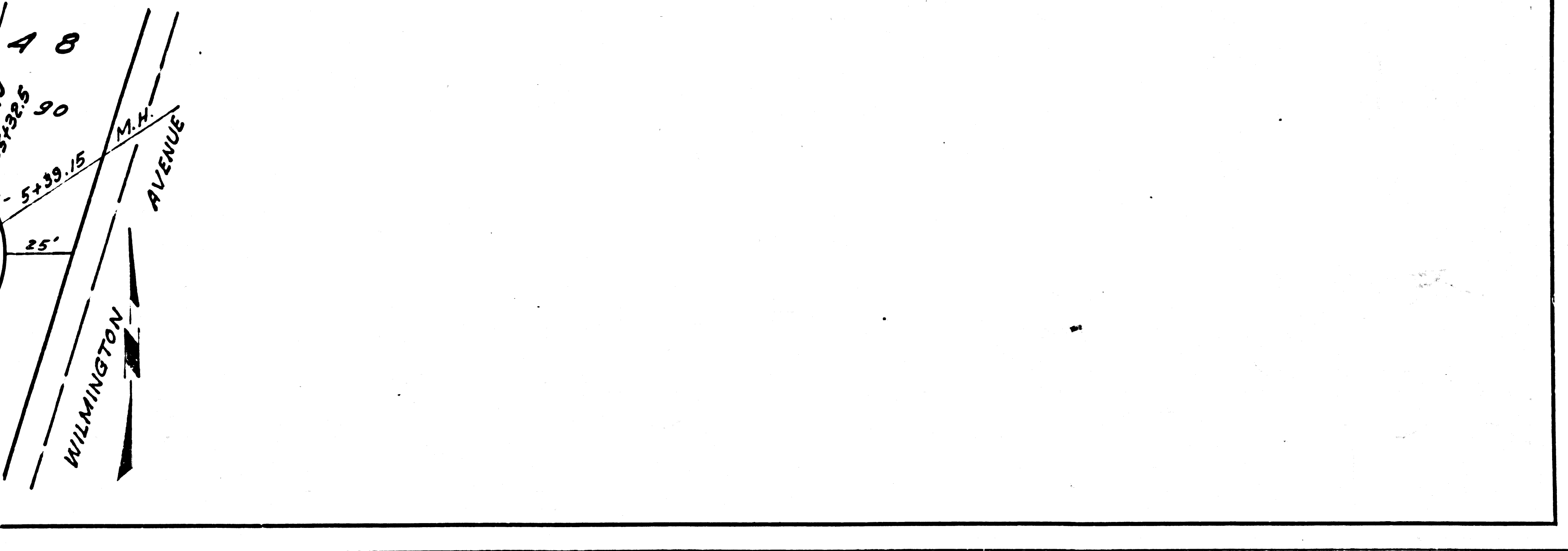
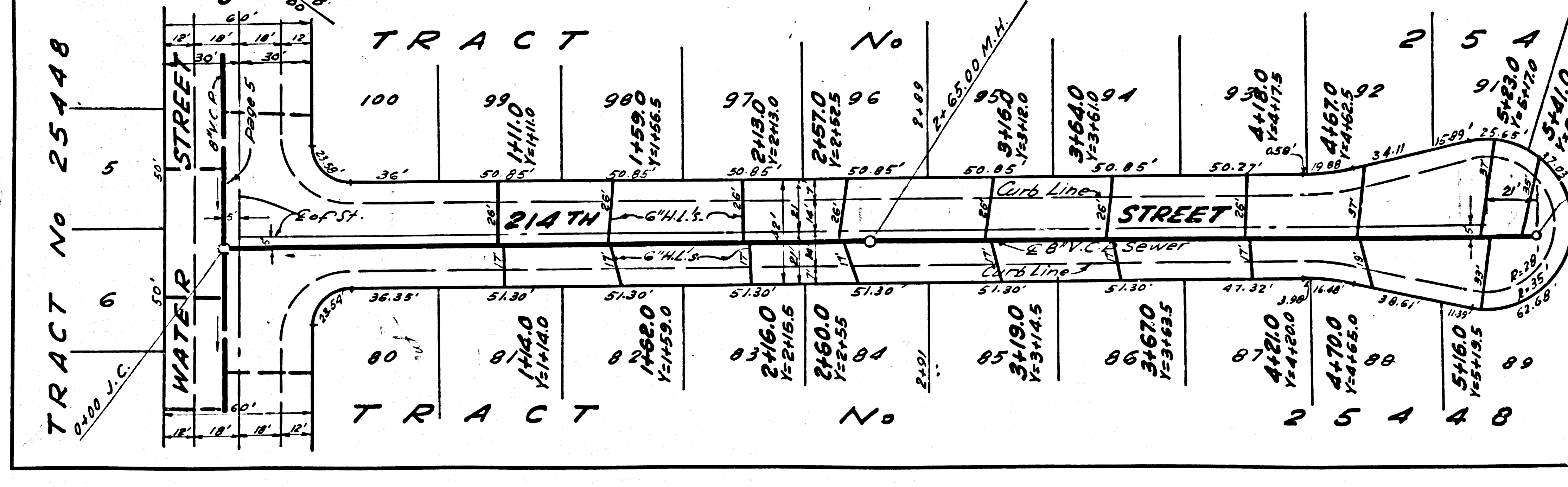
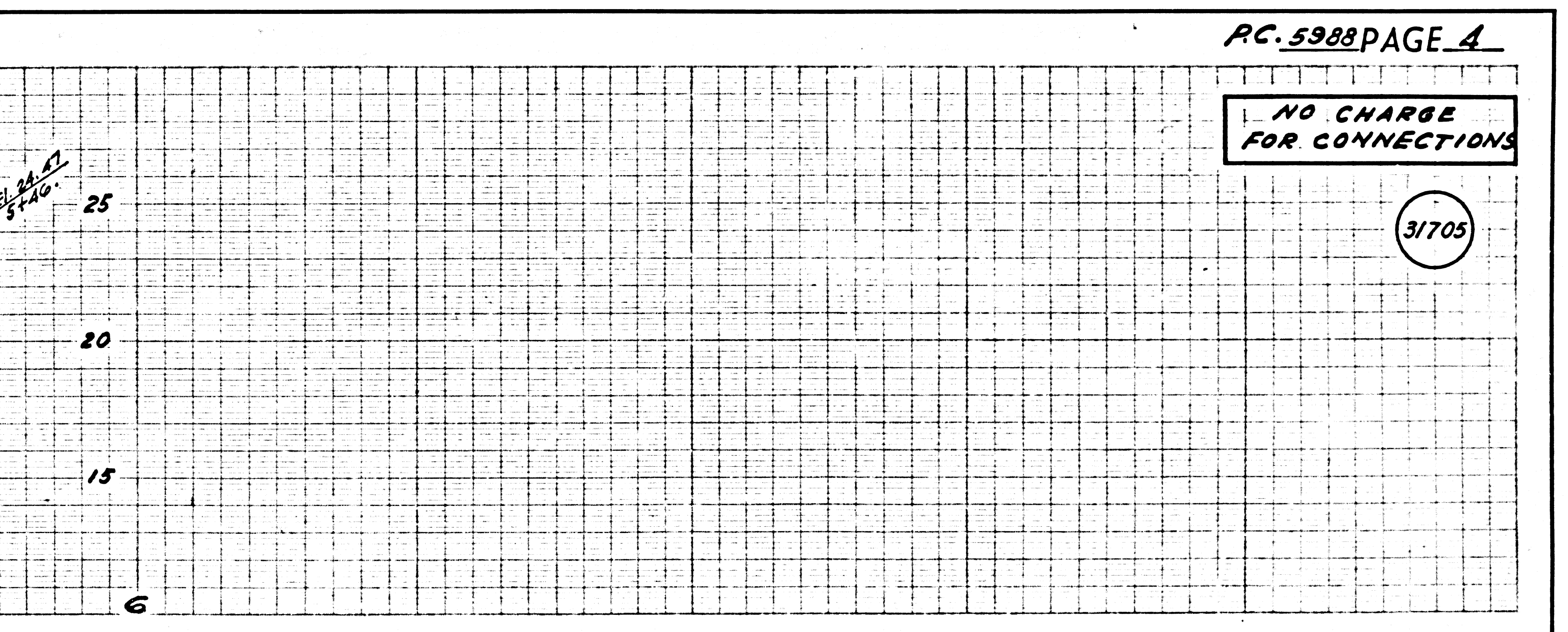
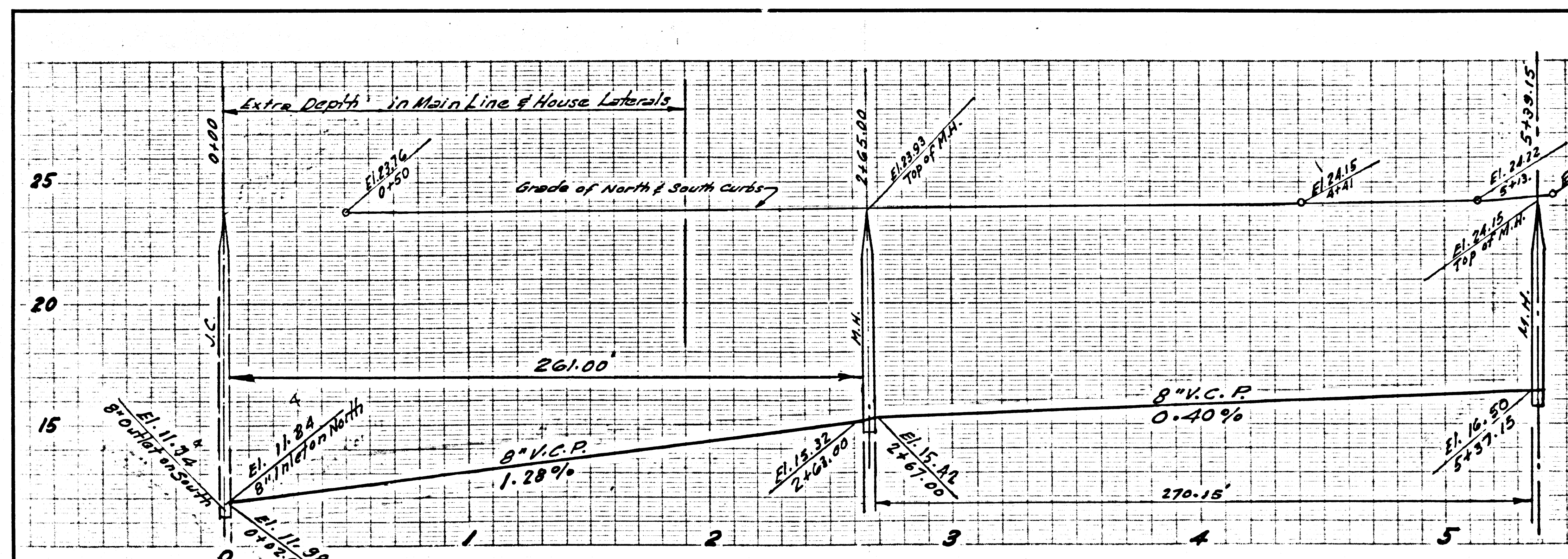
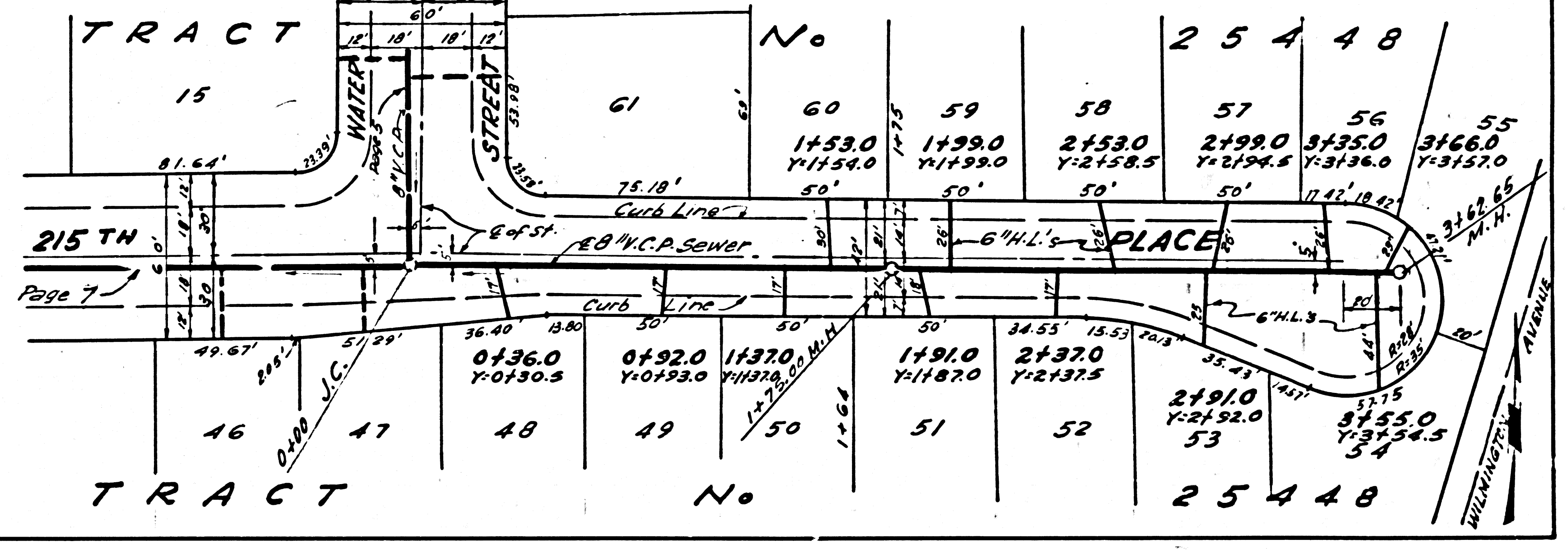
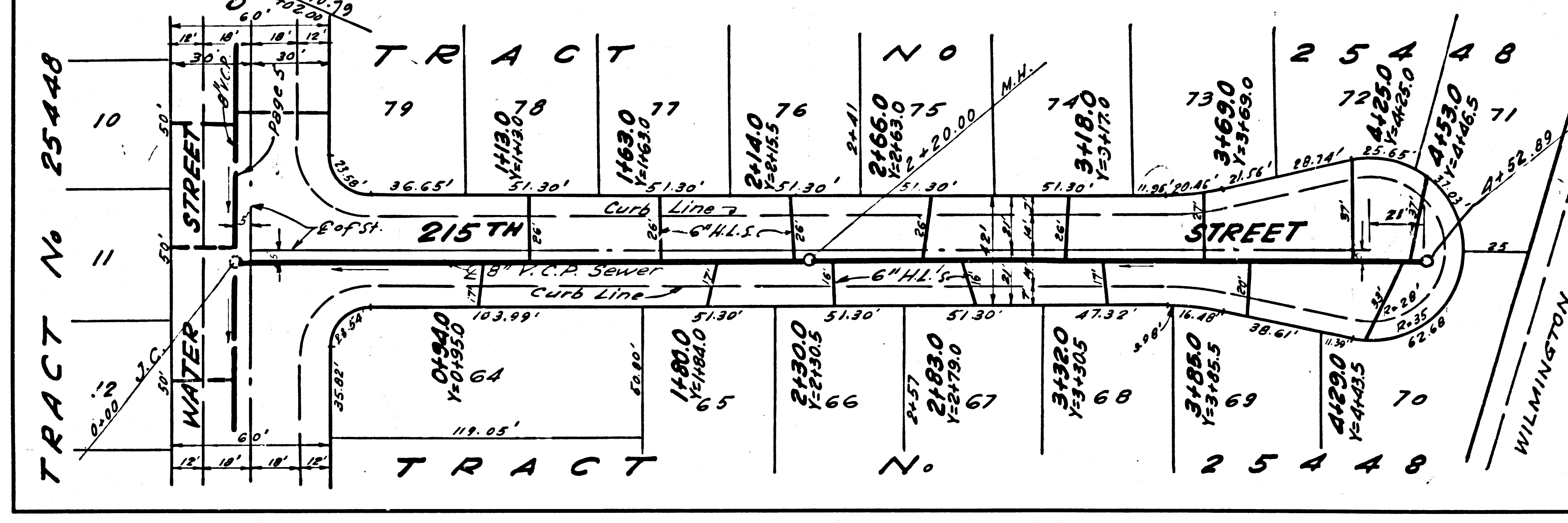
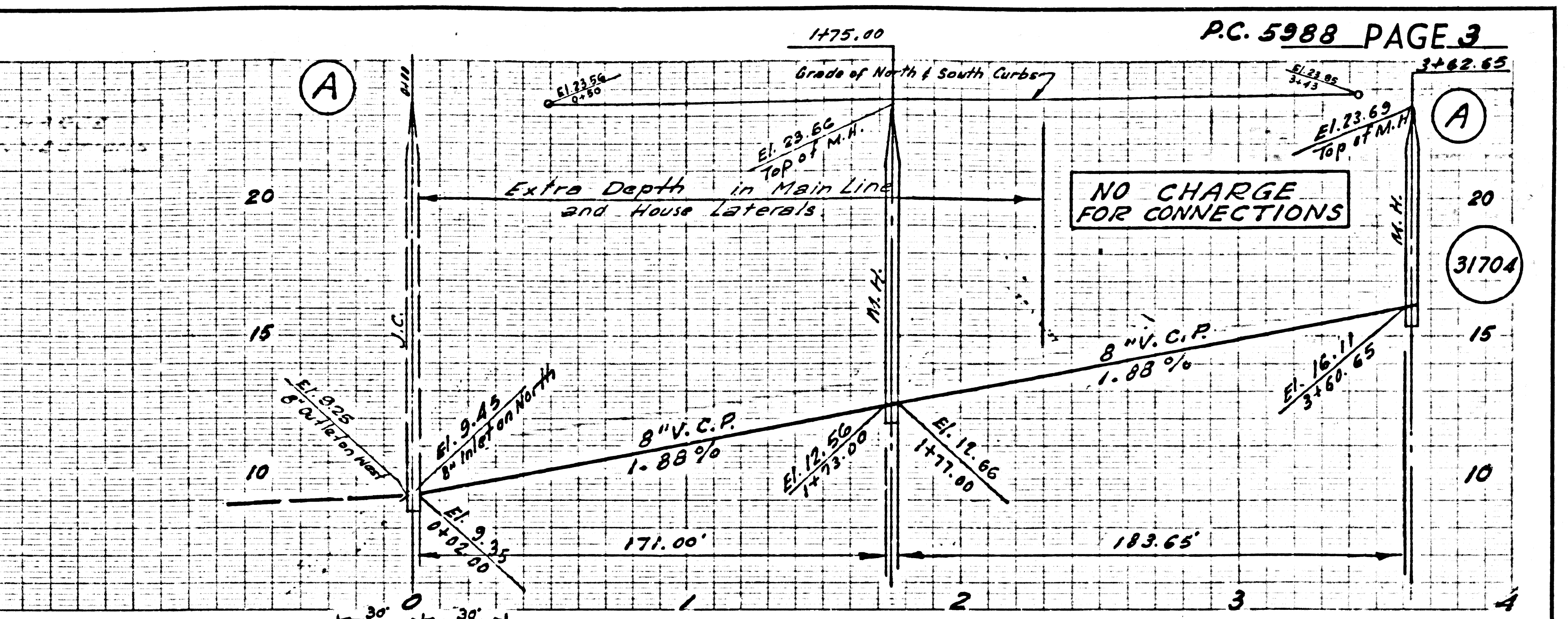
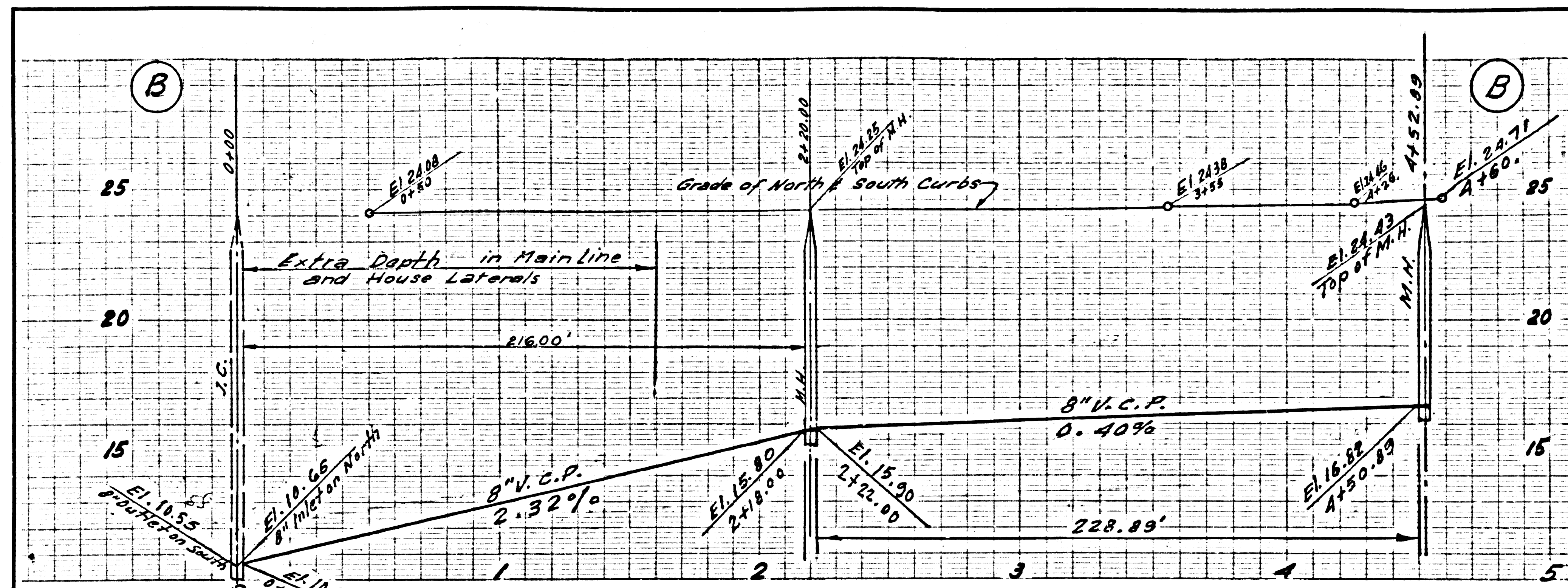
Submitted by: Jack C. Lansing  
 Sales Manager - Centinela Valley Regional Engineer.



P.C. 5988 PAGE 2

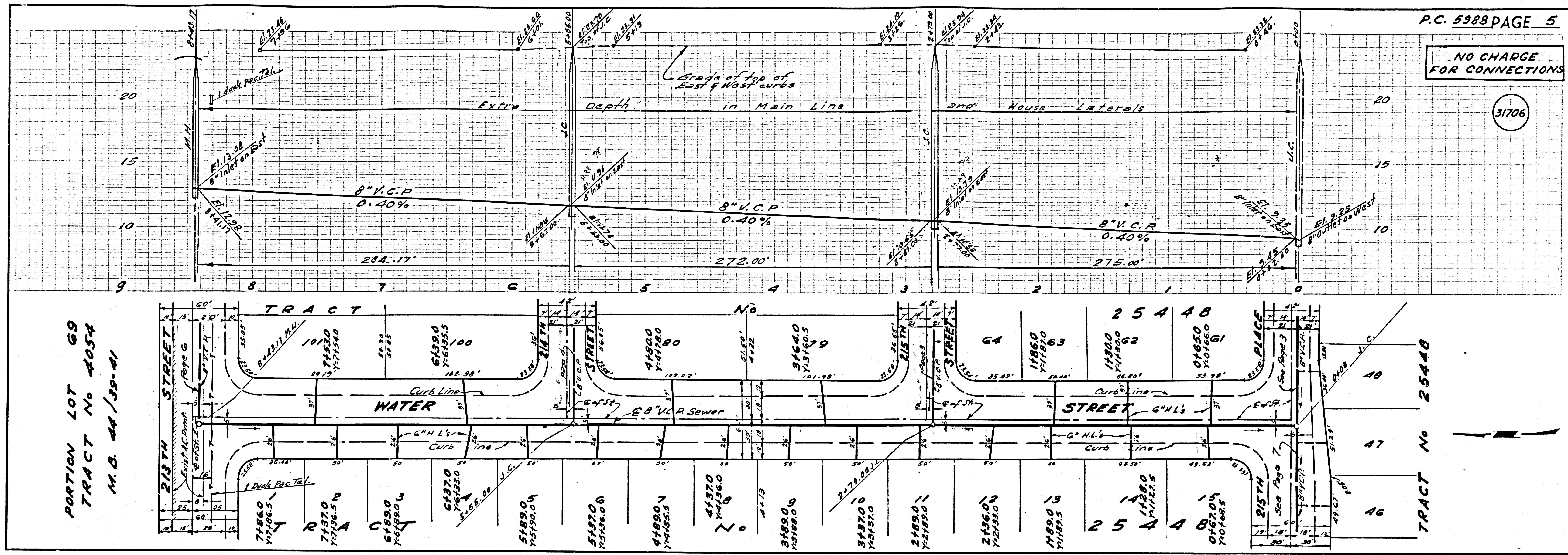
CONNECTION CHARGES AS INDICATED

31703



NO CHARGE FOR CONNECTIONS

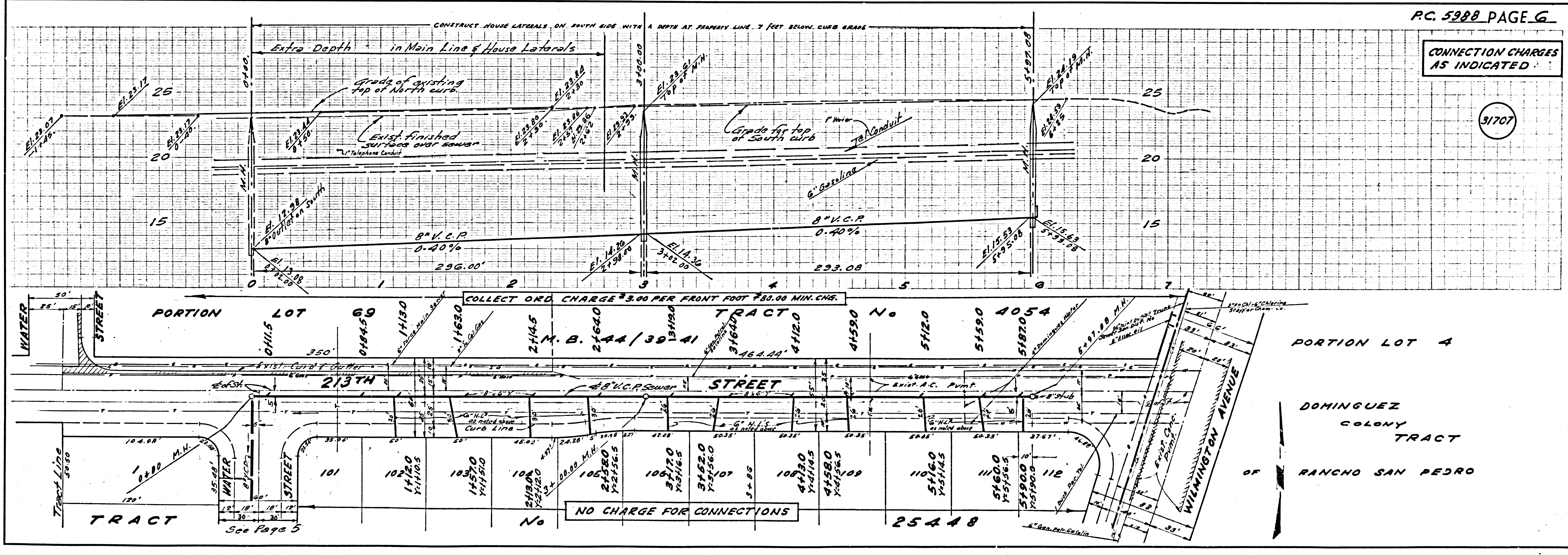
31706



PORTION LOT 69  
TRACT No 4054  
M.B. 44/39-41

CONNECTION CHARGES AS INDICATED

31707



PORTION LOT 69  
TRACT No 4054  
M.B. 44/39-41

NO CHARGE FOR CONNECTIONS

PORTION LOT 4  
DOMINGUEZ COLONY TRACT  
OF RANCHO SAN PEDRO

NO CHARGE FOR CONNECTIONS

31708

