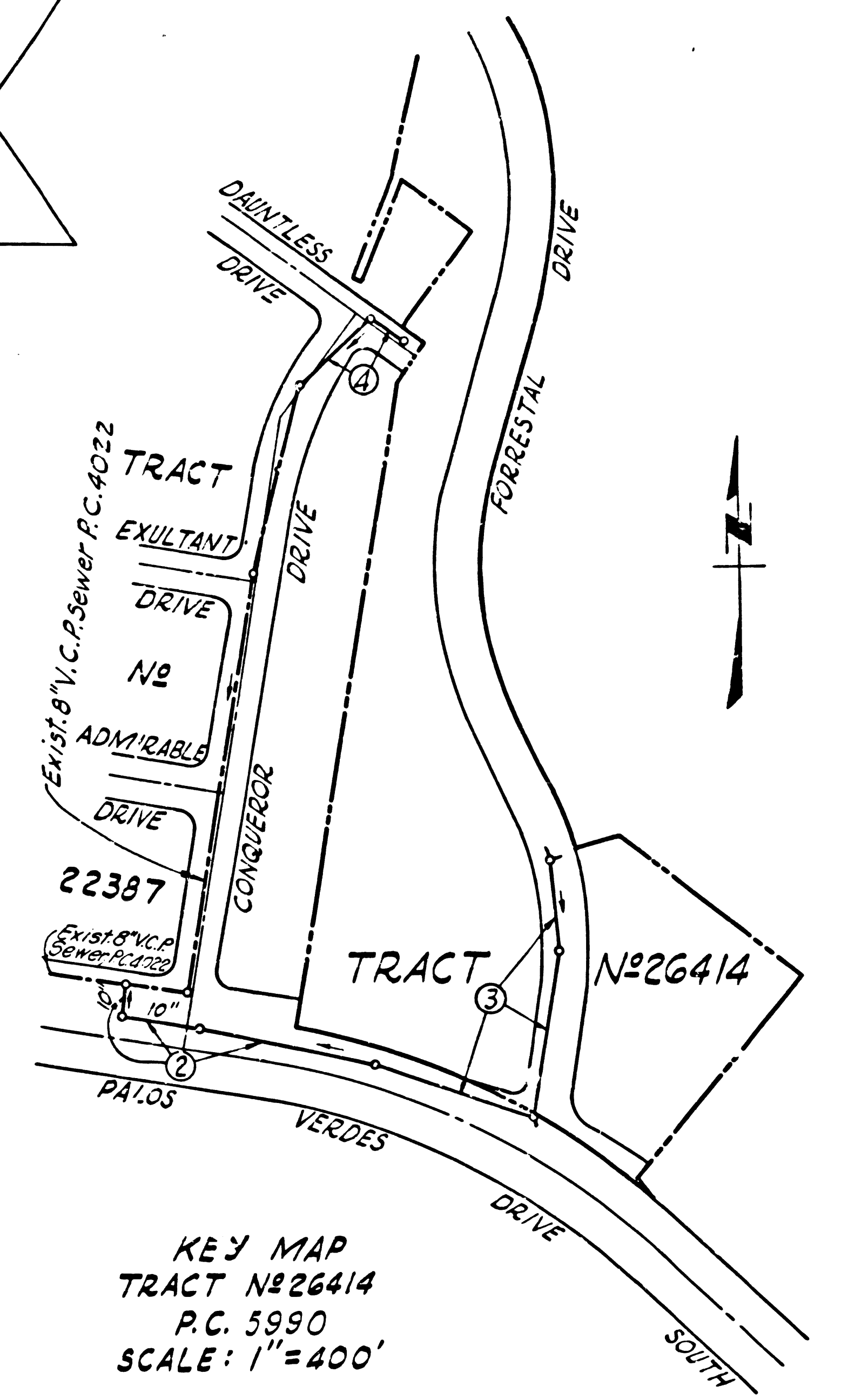


BENCH MARK:
 B.M. 34-13 U.S.C. & G.S. B.M. V-787 (U.S. 4131)
 Palos Verdes Dr. S. 0.5 mi. W. from junction, Palos
 Verdes Dr. S. and Palos Verdes Dr. E. 27.6' E. of a
 stone box culvert, 26.2' N.E. of center line, 2' E. of
 a white witness post. A Std. disk stamped "V-787"
 1946" set in top of conc. post flush with surface.
 F.B. 1355-19' 1953 Adj. Elev. 332.211



**PRIVATE ENGINEER'S
 NOTICE TO CONTRACTOR**

THE EXISTENCE AND LOCATION OF ALL UNDERGROUND UTILITY PIPES OR STRUCTURES SHOWN ON THESE PLANS ARE OBTAINED BY A SEARCH OF THE AVAILABLE RECORDS TO THE BEST OF OUR KNOWLEDGE. THERE ARE NO OTHER UTILITIES EXCEPT AS SHOWN ON THIS MAP. THE CONTRACTOR IS REQUESTED TO TAKE PRECAUTIONARY MEASURES TO PROTECT THE UTILITIES SHOWN AND ANY OTHER LINES NOT OF RECORD OR NOT SHOWN ON THIS DRAWING.

**KEY MAP
 TRACT N22641
 P.C. 5990
 SCALE: 1"=400'**

**NO CHARGE
 FOR CONNECTIONS**
 Submitted 9-27-61

**DOUBLE SCALE
 LOMITA BLDG. DIST. NO. 12**

PROFILE ALIGNMENT AND GRADE OF P.C. 5990
SANITARY SEWERS PAGE 1
 TO BE CONSTRUCTED IN J.N. 0356 66

**TRACT N22641
 PRIVATE CONTRACT NO. 5990**

W.S. 27
 2 SHEETS; 4 PAGES

SCALE: VERT. 1"=4'
 HORIZ. 1"=40' August, 1961
 PREPARED IN THE OFFICES OF
ENGINEERING SERVICE CORPORATION

32135

By: *C.F. Jones*
 REG. C. E. NO. 3632
 FOR LEGEND SEE PLAN NO. S-A-64

- NOTES**
- PROVIDE STAKES ON THE PROPERTY LINE OR PROPERTY LINES PRODUCED AT RIGHT ANGLES TO THE SEWER LINE AT THE CENTER LINE OF EACH MANHOLE.
 - NO REPRESENTATIVE OF THE COUNTY ENGINEER WILL SURVEY OR LAYOUT ANY PORTION OF THE WORK.
 - THE OWNER OR HIS AUTHORIZED REPRESENTATIVE SHALL FURNISH THE COUNTY ENGINEER WITH GRADE SHEETS AND STATIONING FOR ALL HOUSE LATERALS AND Y BRANCHES AND SHALL PROVIDE STAKES FOR THEM AT THEIR PROPER LOCATIONS WITH STATIONING PLAINLY MARKED. ANY CHANGE IN LOCATION SHALL BE REQUESTED IN WRITING BY THE OWNER OR HIS REPRESENTATIVE.
 - NO REVISIONS SHALL BE MADE IN THESE PLANS WITHOUT THE APPROVAL OF THE COUNTY ENGINEER.
 - USE STANDARD MANHOLE FRAMES AND COVERS, S.A. 117.
 - USE EXTRA STRENGTH PIPE, ALL PIPE IS STANDARD DEPTH, EXCEPT AS NOTED.
 - USE CEMENT MORTAR OR "WEDGE LOCK" OR "SPEED SEAL" FOR ALL V.C.P. JOINTS PER SPECS SEC 36 & 48.
 - RESURFACE ALL TRENCH WITHIN PAVED AREA TO MEET L. A. COUNTY ROAD DEPT., OR CALIF. STATE HIGHWAY DEPT. REQUIREMENTS IN ACCORDANCE WITH PERMITS.
 - ENCASE FOUR FEET OF SEWER AT POINTS OF INTERFERENCE WITH POLES, S.A. 172 CASE III.
 - HOUSE LATERALS TO BE CONSTRUCTED WITH INVERTS AT PROPERTY LINE 6" FEET BELOW CURB GRADE EXCEPT AS NOTED.
 - ALL STRUCTURES SHALL BE BRICK SEWER STRUCTURES, S.A. 104.
 - FOR ALLOWABLE LEAKAGE TEST USE FORMULA NO. 1 SPECS, SEC. 54.
 - SPECIFICATIONS DATED OCT. 10, 1960 APPLY IN THE CONSTRUCTION OF THIS PROJECT.
 - THE PRIVATE ENGINEER IS TO FURNISH THE HOUSE LATERAL DEPTH AT THE PROPERTY LINE BELOW THE TOP OF CURVE ELEVATION FOR EACH HOUSE LATERAL ON THE GRADE SHEET.
 - THE CONTRACTOR SHALL NOTIFY THE CONSTRUCTION DIVISION BY TELEPHONE, MADISON 9-4747, EXT. 81591 AT LEAST 24 HOURS BEFORE STARTING ANY WORK UNDER THIS CONTRACT.

CONNECTIONS FOR THE DISPOSAL OF INDUSTRIAL WASTES SHALL BE MADE TO SEWERS SHOWN ON THESE DRAWINGS WITHOUT WRITTEN PERMISSION FROM THE CHIEF ENGINEER AND GENERAL MANAGER OF THE COUNTY SANITATION DISTRICTS.

ENGINEERING SERVICE CORPORATION 1127 W. WASHINGTON BLVD. LOS ANGELES 15, CALIF. RI. 9-7281					
REVISIONS			TRACED BY <i>C. Falzone</i>		
			DES'G'D BY <i>B. Froman</i>		
			CK'D BY <i>C.M.R.</i>		
			SUBMITTED <i>A.A.M.E.</i>		
SUB STRUCTURES OK'D					
W. O. NO.	DWG. NO.	DATE	SCALE	L. B.	F. B.
6777-87		August 1961	As Noted	546	

NOTE:
 GRADES TO WHICH THIS IMPROVEMENT IS TO BE CONSTRUCTED ARE SHOWN ON PLANS AND PROFILES. GRADE POINTS FOR TOP OF CURBS, CENTER LINE OF STREETS, OR CENTER LINE OF ALLEYS ARE SHOWN BY CIRCLES ON PROFILES AT ALL POINTS BETWEEN DESIGNATED POINTS THE GRADE SHALL BE ESTABLISHED TO AS TO CONFORM TO A STRAIGHT LINE DRAWN BETWEEN SAID DESIGNATED POINTS.
 ELEVATIONS ARE IN FEET ABOVE U.S.C. AND G.S. SEA LEVEL DATUM OF 1929.
 THIS DRAWING AND THE DATA HEREON ARE HEREBY MADE A PART OF THE SPECIFICATIONS.
 WORK SHALL BE CONSTRUCTED ACCORDING TO SPECIFICATIONS ON FILE IN THE OFFICE OF THE COUNTY ENGINEER AND SHALL BE PROSECUTED ONLY IN THE PRESENCE OF THE COUNTY ENGINEER.
 BEFORE WORK CAN BE STARTED THE CONTRACTOR MUST OBTAIN A PERMIT TO EXCAVATE IN CITY STREETS FROM THE COUNTY ENGINEER, ROOM 310 COUNTY ENGINEERS BLDG. 108 W. 8TH STREET, SUFFICIENT TO COVER THE COST OF CONSTRUCTION INSPECTION AND RECORD PLANS.
 APPROVAL OF THIS PLAN BY THE COUNTY OF LOS ANGELES DOES NOT CONSTITUTE A REPRESENTATION AS TO THE ACCURACY OF THE LOCATION OF OR THE EXISTENCE OR NON-EXISTENCE OF ANY UNDERGROUND UTILITY PIPE, OR STRUCTURE WITHIN THE LIMITS OF THIS PROJECT. THIS NOTE APPLIES TO ALL PAGES.
 IF WORK IS TO BE DONE IN A STATE HIGHWAY, A PERMIT MUST BE OBTAINED FROM THE STATE OF CALIFORNIA, DIVISION OF HIGHWAYS, 120 SOUTH SPRING STREET.

COUNTY OF LOS ANGELES, CALIFORNIA
 APPROVED, JOHN A. LAMBIE, COUNTY ENGINEER
 APPROVED, J.D. PUGH, CHIEF ENGINEER
 CO SAN DIST NO. 5
 BY *C.F. Jones* BY *J.D. Pugh*
 SANITATION ENGINEER OFFICE ENGINEER
 CHECKED BY *J.W. Duda* 10-2-61
 OFFICE OF COUNTY ENGINEER, REG. C. E. NO. 3404
 SUBMITTED *Jack C. Lansing*
 PALOS VERDES - CENTINELA VALLEY DISTRICT ENGINEER

P.C. 5990 PAGE 2

DOUBLE SCALE

NO CHARGE
 FOR CONNECTIONS

32136

