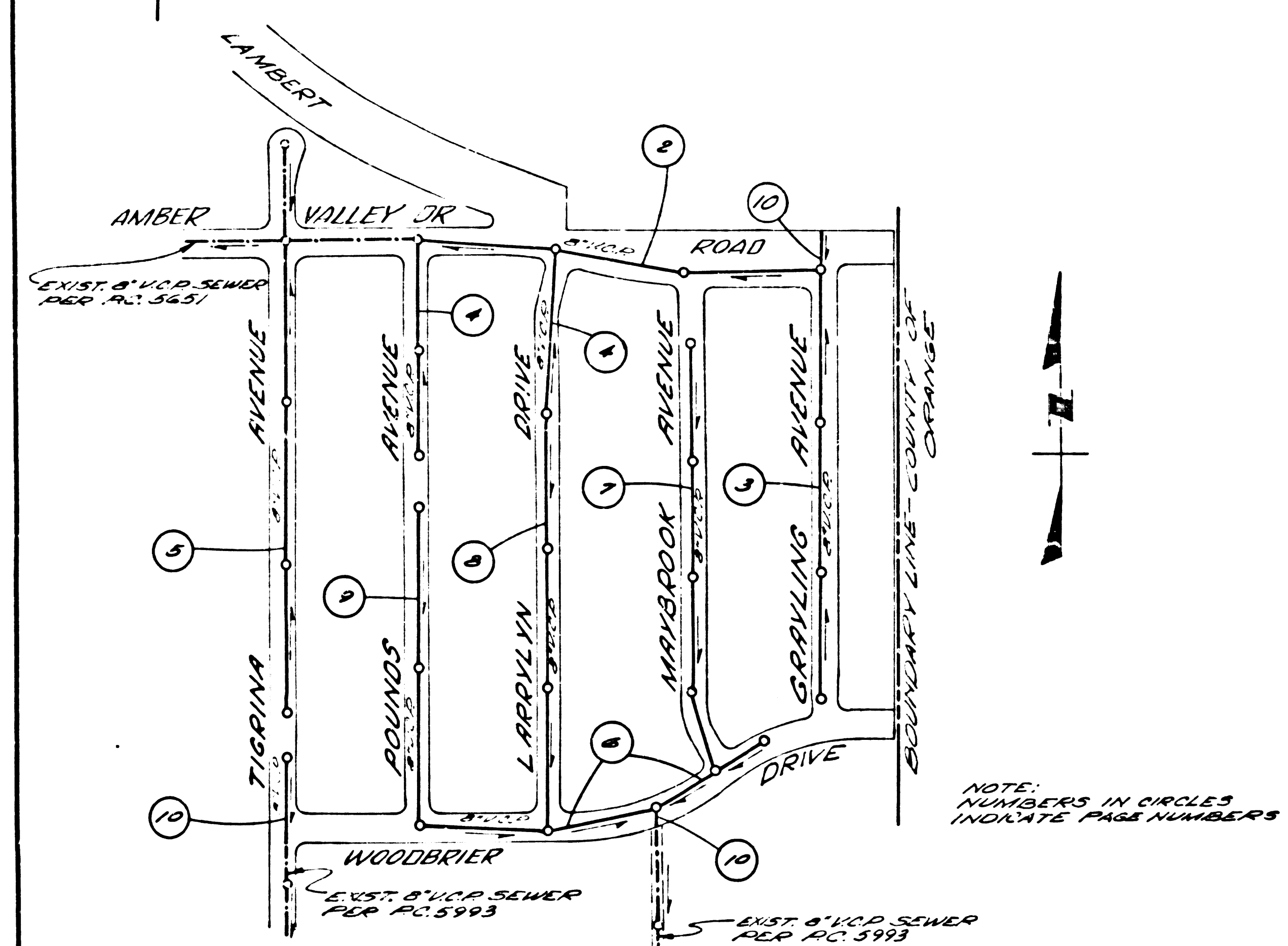


**BENCH MARK**  
 54' ABOVE ELEV. WITH 838  
 MONUMENT IN M.I.C. PAVEMENT 6' S.E. OF LUTHWIELER AVENUE  
 AND 18' W. OF TEL. POLE NO. W 38511 1232 S. 30. OF 8' IMPERIAL  
 HIGHWAY IN CASINGS WITH COVER. (LAMIRADA QUAD. 1933 ADJ.)

**NORWALK BLDG. DIST. NO. 4.2**

PROFILE ALIGNMENT AND GRADE OF  
**SANITARY SEWERS** PAGE 1  
 TO BE CONSTRUCTED IN  
**TRACT No. 24969**

**PRIVATE CONTRACT NO. 5994**



**INDEX MAP**  
**TRACT No. 24969**  
 SCALE: 1"=300'  
 P.C. 5994  
 J.M. 0356.68

- NOTES**
1. PROVIDE STAKES ON THE PROPERTY LINE OR PROPERTY LINES PRODUCED AT RIGHT ANGLES TO THE SEWER LINE AT THE CENTER LINE OF EACH MANHOLE.
  2. NO REPRESENTATIVE OF THE COUNTY ENGINEER WILL SURVEY OR LAY OUT ANY PORTION OF THE WORK.
  3. THE OWNER OR HIS AUTHORIZED REPRESENTATIVE SHALL FURNISH THE COUNTY ENGINEER WITH GRADE SHEETS AND STATIONING FOR ALL HOUSE LATERALS AND Y BRANCHES AND SHALL PROVIDE STAKES FOR THEM AT THEIR PROPER LOCATIONS WITH STATIONING PLAINLY MARKED. ANY CHANGE IN LOCATION SHALL BE REQUESTED IN WRITING BY THE OWNER OR HIS REPRESENTATIVE.
  4. THE PRIVATE ENGINEER SHALL FURNISH THE HOUSE LATERAL DEPTH AT THE PROPERTY LINE BELOW THE TOP OF CURB ELEVATION FOR EACH HOUSE LATERAL ON THE GRADE SHEET.
  5. NO REVISIONS SHALL BE MADE IN THESE PLANS WITHOUT THE APPROVAL OF THE COUNTY ENGINEER.
  6. USE STANDARD MANHOLE FRAMES AND COVERS, S-117, EXCEPT AS NOTED.
  7. USE EXTRA STRENGTH PIPE, ALL PIPE IS STANDARD DEPTH, EXCEPT AS NOTED.
  8. USE CEMENT MORTAR OR "WEDGE-LOCK" OR "SPEED-SEAL" FOR ALL Y.C.P. JOINTS PER SPEC., SECS. 36 & 41.
  9. RESURFACE ALL TRENCH WITHIN PAVED AREA TO MEET L.A. COUNTY ROAD DEPT. OR CALIF. STATE HIGHWAY REQUIREMENTS IN ACCORDANCE WITH PERMITS.
  10. ENCASE FOUR FEET OF SEWER AT POINTS OF INTERFERENCE WITH POLES, CASE III, S-117.
  11. HOUSE LATERALS TO BE CONSTRUCTED WITH INVERTS AT PROPERTY LINE 6 FEET BELOW CURB GRADE EXCEPT AS NOTED.
  12. ALL STRUCTURES SHALL BE BRICK SEWER STRUCTURES, S-104, EXCEPT AS NOTED.
  13. FOR ALLOWABLE LEAKAGE TEST USE FORMULA NO. 1 SPEC. S., SEC. 54.
  14. MANHOLE TOPS IN UNIMPROVED RIGHTS-OF-WAY TO BE SIX INCHES ABOVE FINISHED GRADE.
  15. THE CONTRACTOR SHALL NOTIFY THE CONSTRUCTION DIVISION BY TELEPHONE, MADISON 9-4747, 8:15 A.M. AT LEAST TWENTY-FOUR HOURS BEFORE STARTING ANY WORK UNDER THIS CONTRACT.
  16. STANDARD SPECIFICATIONS DATED OCTOBER 10, 1960 APPLY IN THE CONSTRUCTION OF THIS PROJECT.
  17. NO CONSTRUCTION WILL BE PERMITTED IN FILLED AREAS UNLESS ACCEPTABLE CERTIFICATION IS SUBMITTED TO THE CONSTRUCTION DIVISION OF THE COUNTY ENGINEER DEPT. THAT COMPACTION IS GREATER THAN 80% B.Y. COMPACTION IS GREATER THAN 90% CRADLING OR SPECIAL M.H. BASES ARE NOT REQUIRED, HOWEVER JOINT COMPOUND MUST BE SUBSTITUTED FOR CEMENT MORTAR FOR ALL JOINTS IN FILLED AREAS. C. IF COMPACTION IS LESS THAN 80% THE SEWER MUST BE CRADLED AS SHOWN ON PLANS (P.E.P. 3-9-16C)

W.S. 34  
 5 SHEETS; 10 PAGES  
 SCALE: VERT. 1"=4'  
 HORIZ. 1"=40'  
 SEPTEMBER, 1961  
 PREPARED IN THE OFFICES OF  
**MCINTIRE & QUIROS, INC.**  
 BY: *Alan McIntire* 11/7/61  
 REG. C. E. NO. 2548  
 FOR LEGEND SEE PLAN, NO. S-A-64

31611

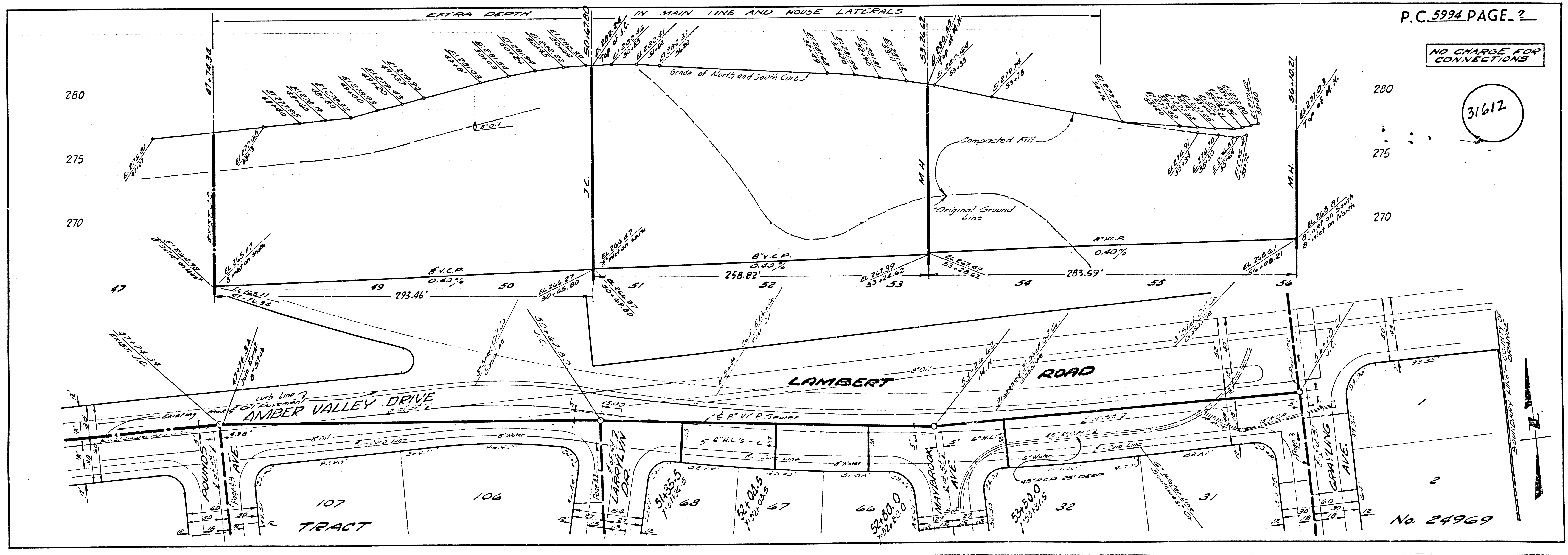
**NOTE:**  
 GRADES TO WHICH THIS IMPROVEMENT IS TO BE CONSTRUCTED ARE SHOWN ON PLANS AND PROFILES. GRADE POINTS FOR TOP OF CURB, CENTER LINE OF STREETS, OR CENTER LINE OF ALLEYS ARE SHOWN BY CIRCLES ON PROFILES. AT ALL POINTS BETWEEN DESIGNATED POINTS THE GRADE SHALL BE ESTABLISHED SO AS TO CONFORM TO A STRAIGHT LINE DRAWN BETWEEN SAID DESIGNATED POINTS.  
 ELEVATIONS ARE IN FEET ABOVE U.S.C. & G.S. SEA LEVEL DATUM OF 1929.  
 THIS DRAWING AND THE DATA HEREON ARE HEREBY MADE A PART OF THE SPECIFICATIONS. THE COUNTY ENGINEER WORK SHALL BE CONSTRUCTED ACCORDING TO SPECIFICATIONS ON FILE IN THE OFFICE OF THE COUNTY ENGINEER AND SHALL BE PROSECUTED ONLY IN THE PRESENCE OF THE COUNTY ENGINEER.  
 BEFORE WORK CAN BE STARTED THE CONTRACTOR MUST OBTAIN A PERMIT TO EXCAVATE IN COUNTY STREETS FROM THE L.A. COUNTY ROAD DEPT. DISTRICT OFFICE NO. 4 AND PAY A FEE WITH THE COUNTY ENGINEER ROOM 310 CO. EXHIB. BLDG. 108 W. 2ND ST. SUFFICIENT TO COVER THE COST OF CONSTRUCTION INSPECTION AND RECORD PLANS.  
 APPROVAL OF THIS PLAN BY THE COUNTY OF LOS ANGELES DOES NOT CONSTITUTE A REPRESENTATION AS TO THE ACCURACY OF THE LOCATION OR THE EXISTENCE OR NON-EXISTENCE OF ANY UNDERGROUND UTILITY PIPE, OR STRUCTURE WITHIN THE LIMITS OF THIS PROJECT. THIS NOTE APPLIES TO ALL PAGES.  
 IF WORK IS TO BE DONE IN A STATE HIGHWAY, A PERMIT MUST BE OBTAINED FROM THE STATE OF CALIFORNIA, DIVISION OF HIGHWAYS, 120 SOUTH SPRING STREET.

**COUNTY OF LOS ANGELES, CALIFORNIA**  
 APPROVED, JOHN A. LAMBIE, COUNTY ENGINEER  
 APPROVED, J.D. PARKHURST, CHIEF ENGINEER  
 BY: *Richard S. ...* ASST. SANITATION ENGINEER  
 BY: *J. ...* OFFICE ENGINEER  
 CHECKED BY: *JK ...*  
 OFFICE OF COUNTY ENGINEER, REG. C. E. NO. 2406

**NO CHARGE FOR CONNECTIONS**  
*D. ... 12-6-61*

NO CONNECTIONS FOR THE DISPOSAL OF INDUSTRIAL WASTES SHALL BE MADE TO SEWERS SHOWN ON THESE DRAWINGS WITHOUT WRITTEN PERMISSION FROM THE CHIEF ENGINEER AND GENERAL MANAGER OF THE COUNTY SANITATION DISTRICTS.

SUBMITTED BY *John ...* 12-6-61  
 LOS CERRITOS REGIONAL ENGINEER, REG. C.E. 5871



P.C. 5994 PAGE 2

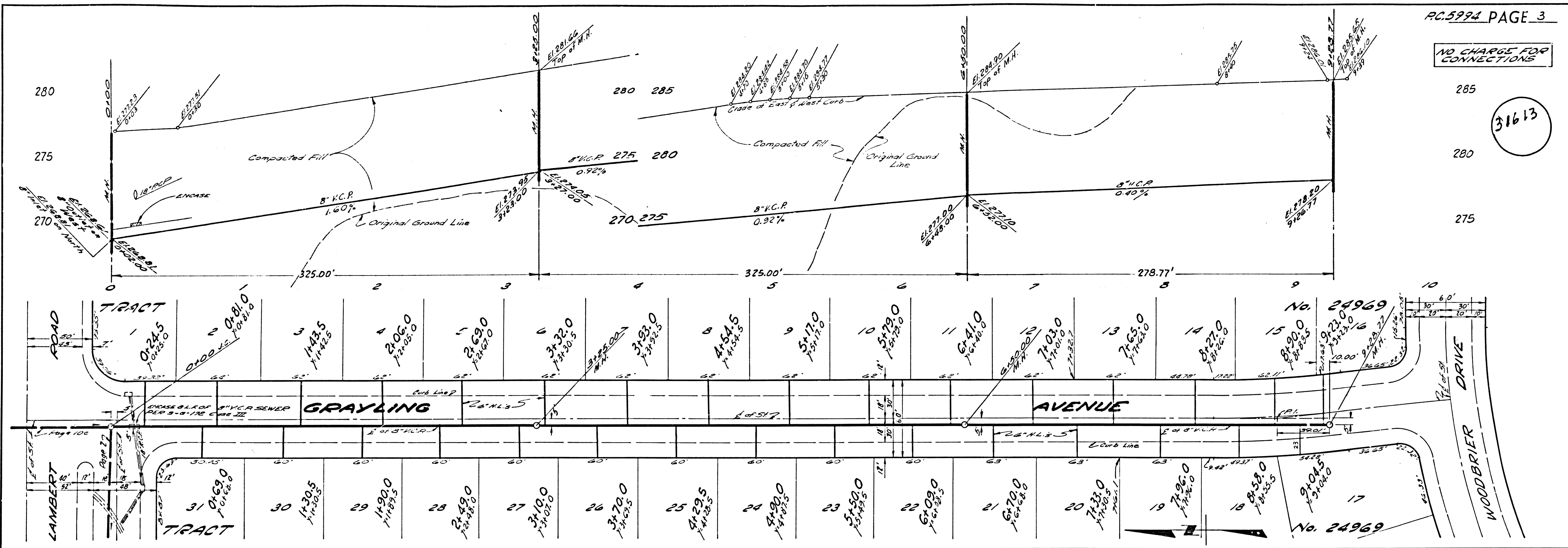
**NO CHARGE FOR CONNECTIONS**

31612



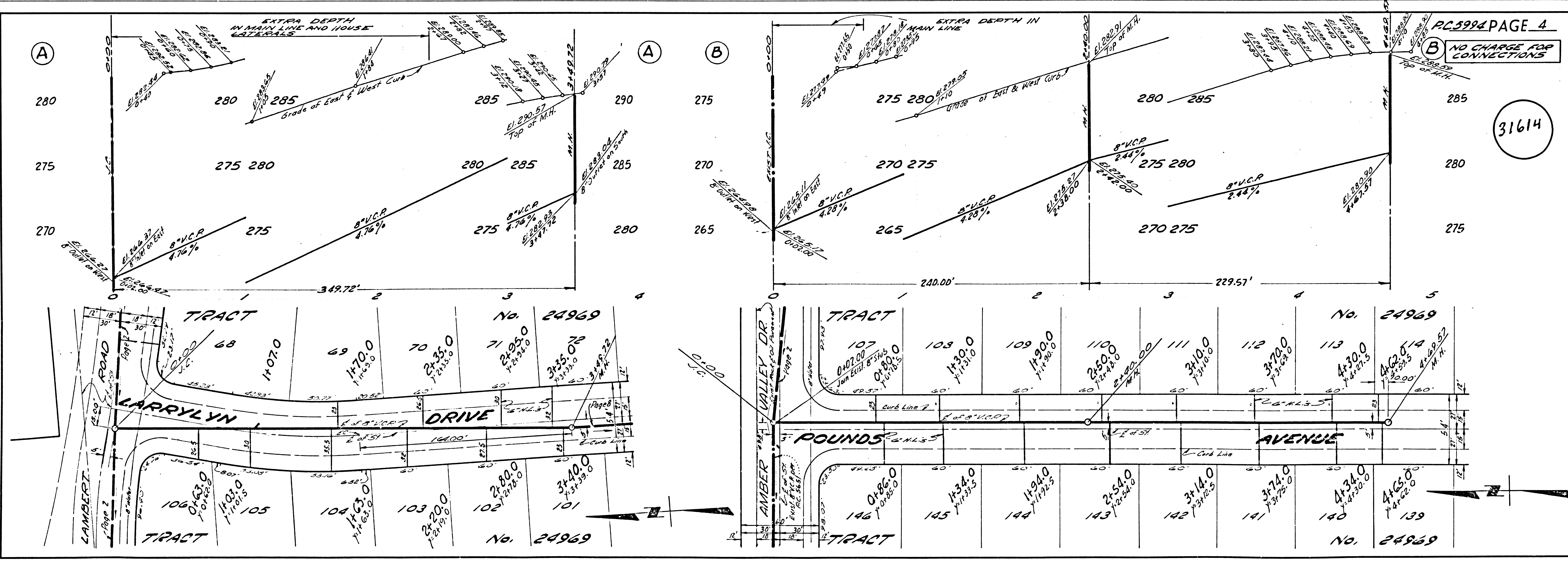
NO CHARGE FOR CONNECTIONS

31613



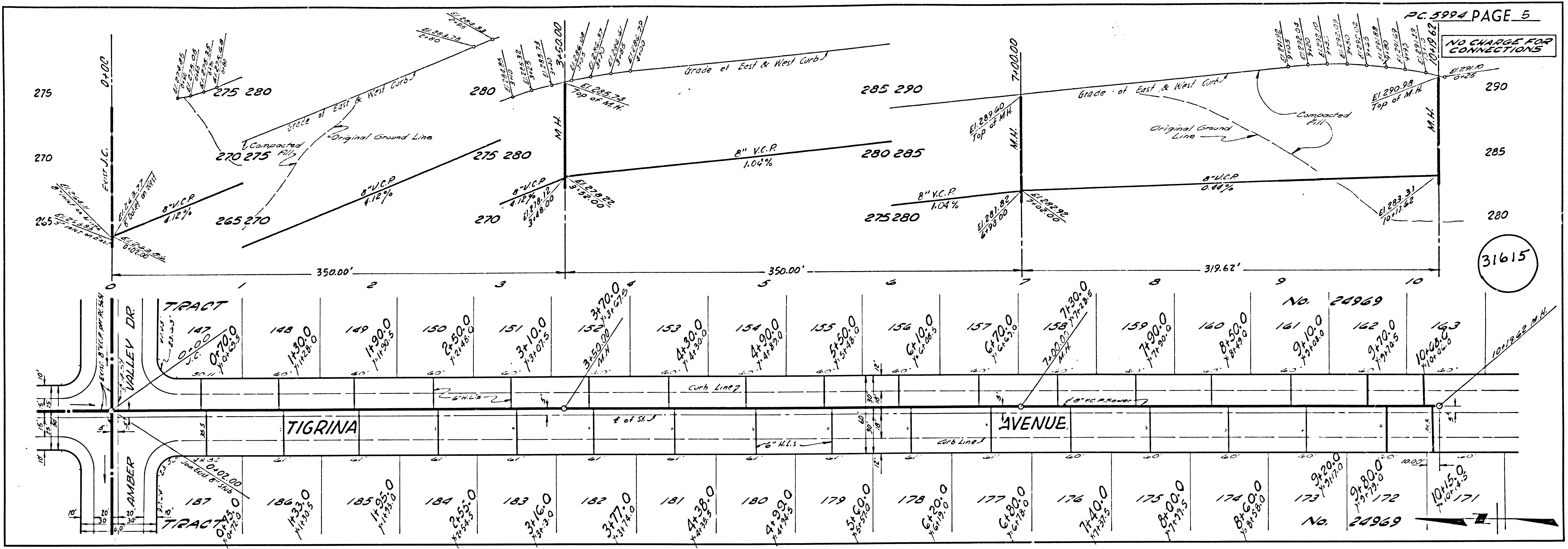
NO CHARGE FOR CONNECTIONS

31614

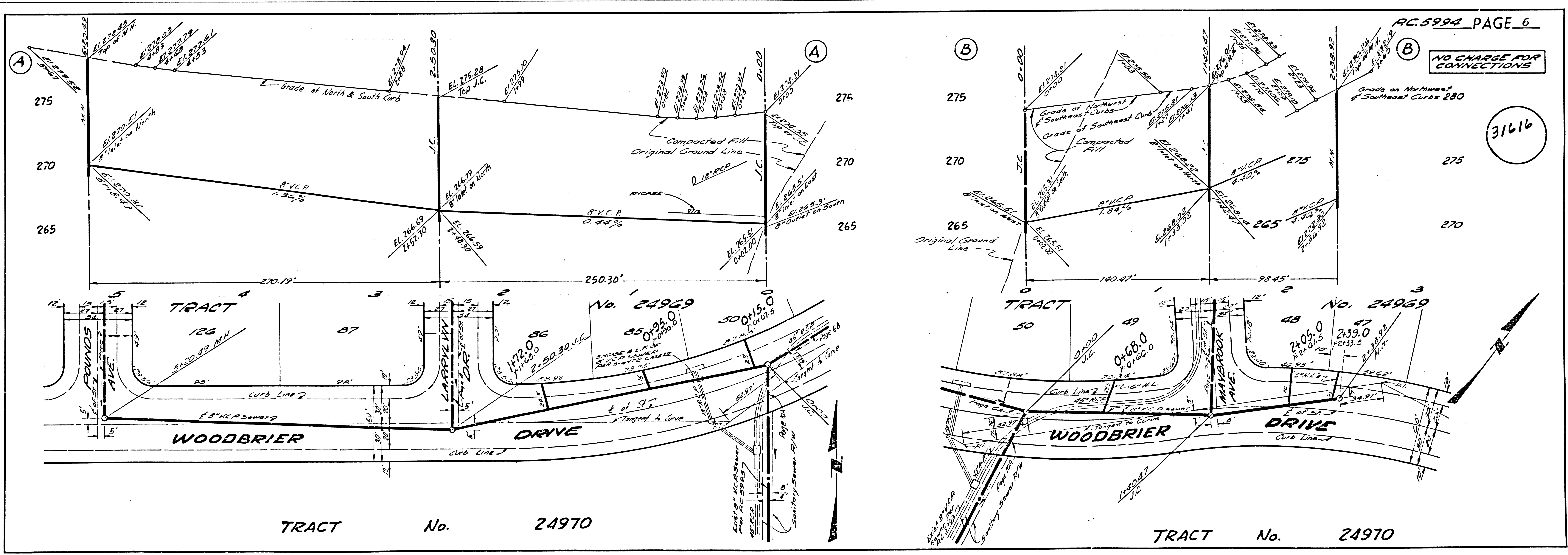




NO CHARGE FOR CONNECTIONS

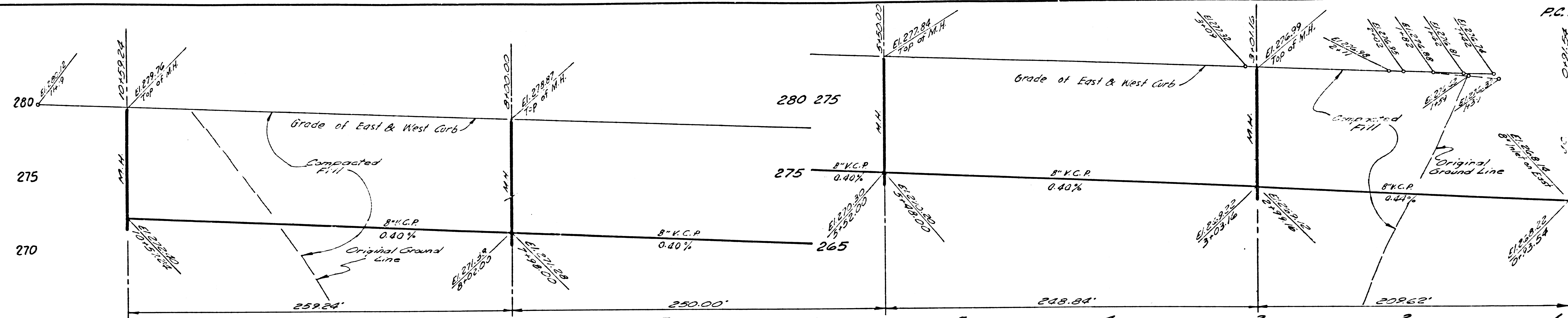


NO CHARGE FOR CONNECTIONS

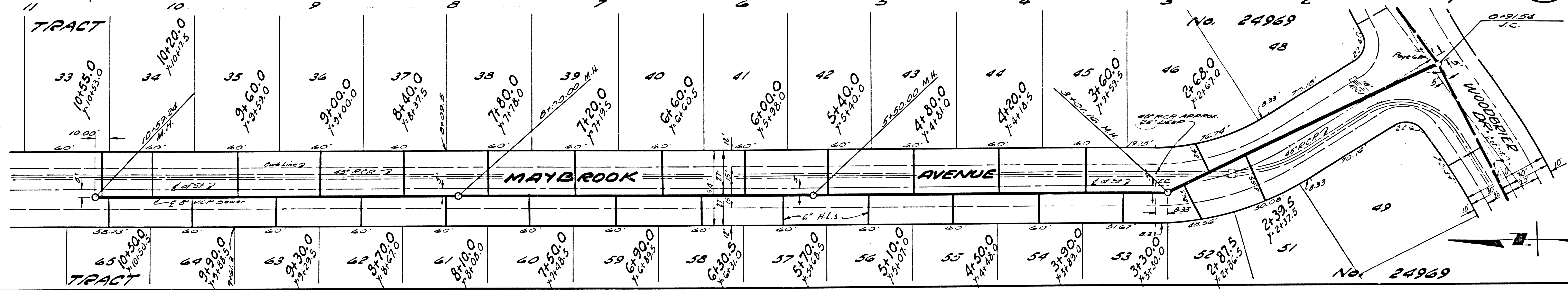




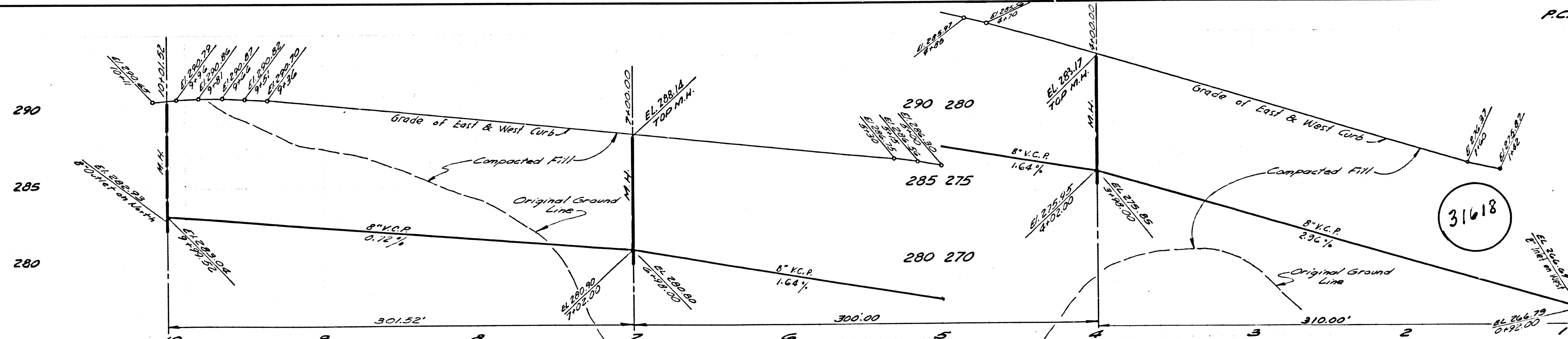
NO CHARGE FOR CONNECTIONS



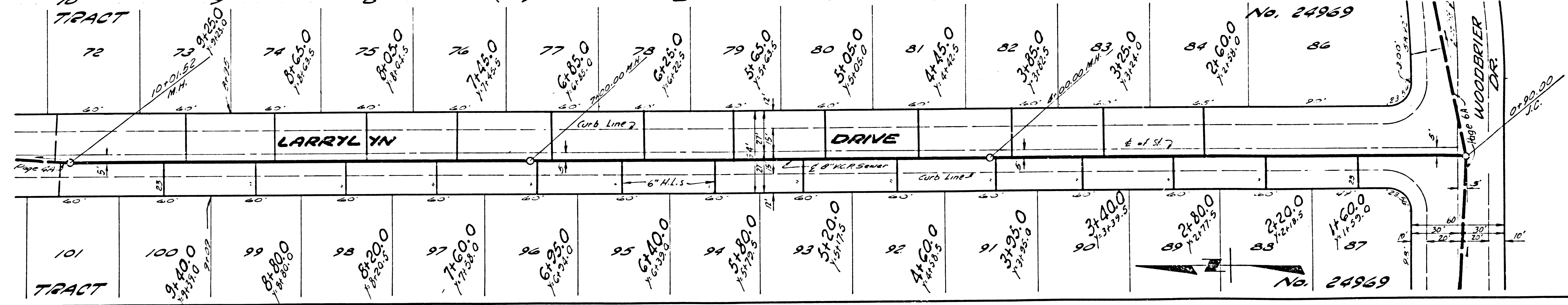
275  
270  
265  
31617



NO CHARGE FOR CONNECTIONS



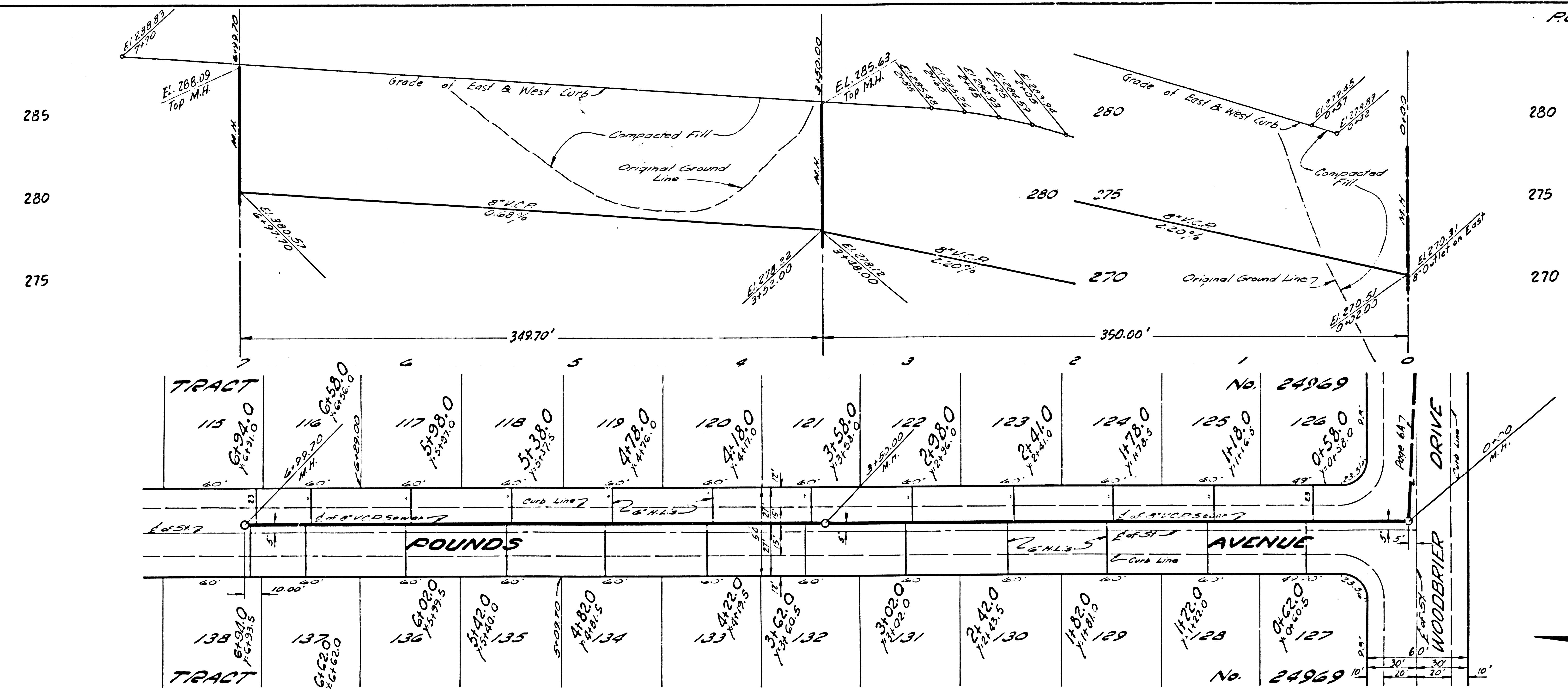
280  
275  
270  
31618





NO CHARGE FOR CONNECTIONS

31619



NO CHARGE FOR CONNECTIONS

31620

