

TRACT NO. 24963  
 PRIVATE CONTRACT NO. 5995

W.S. 34  
 5 SHEETS; 10 PAGES  
 SCALE: VERT. 1" = 4'  
 HORIZ. 1" = 40'  
 AUGUST 23, 1961  
 PREPARED IN THE OFFICES OF

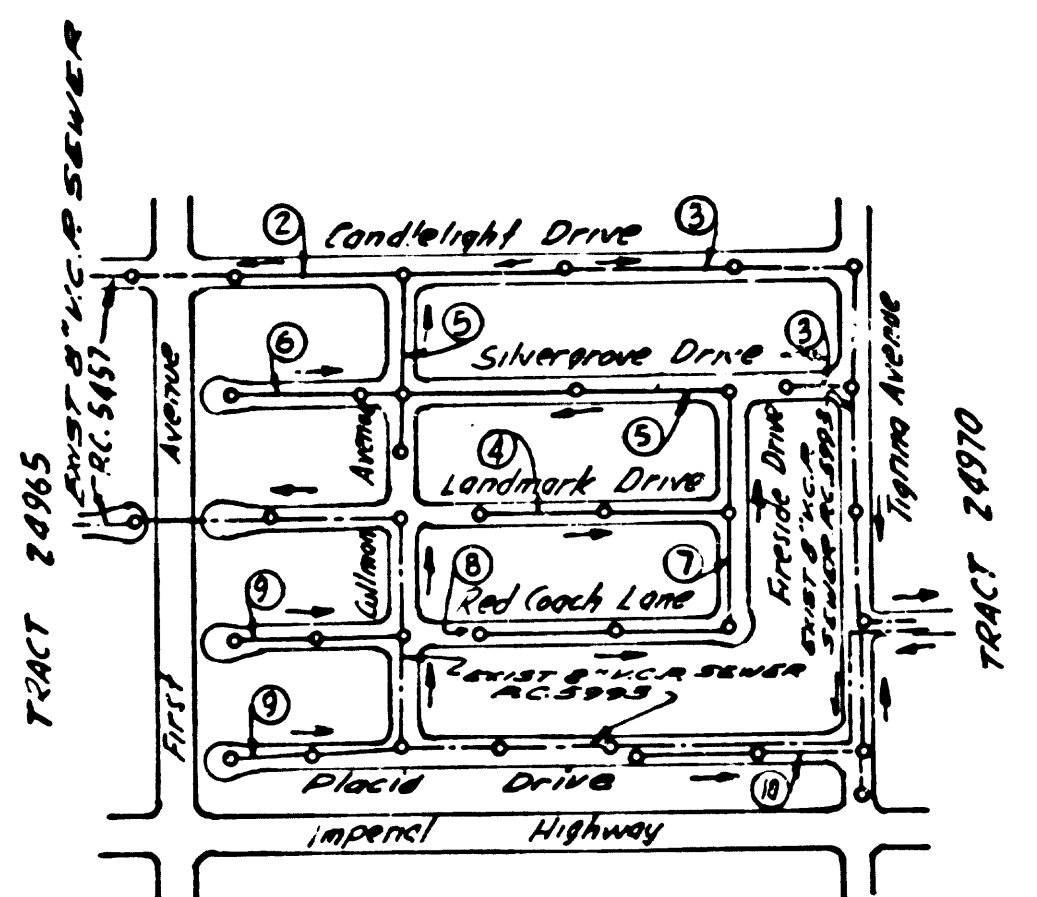
MEINTIRE & QUIROS INC.  
 By: *Alan Quiros* 12/1/61  
 REG. C. E. NO. 2543  
 FOR LEGEND SEE PLAN NO. S-A-64

32311

B.M. 54042 ELEV = 171.836 L.O. COUNTY  
 ROAD DEPARTMENT MONUMENT IN MDC. PAVEMENT  
 6' S OF E OF LUTWILER AVENUE AND 18' W OF TEL  
 POLE NO. W-3651-Y 1236' S.D. OF E OF IMPERIAL HIGHWAY  
 IN CROSSING WITH COVER (LANE ROAD CURB), 1953 ADJ.

LOTS NUMBERED 10 TO 15, 28 TO 35, 43 TO 54, 74, 75, 86 TO 89,  
 109 TO 120, 171 & 172 SERVED BY SEWERS  
 IN P.C. 5995.

NO CHARGES  
 FOR CONNECTION  
*Richland* 1-22-62

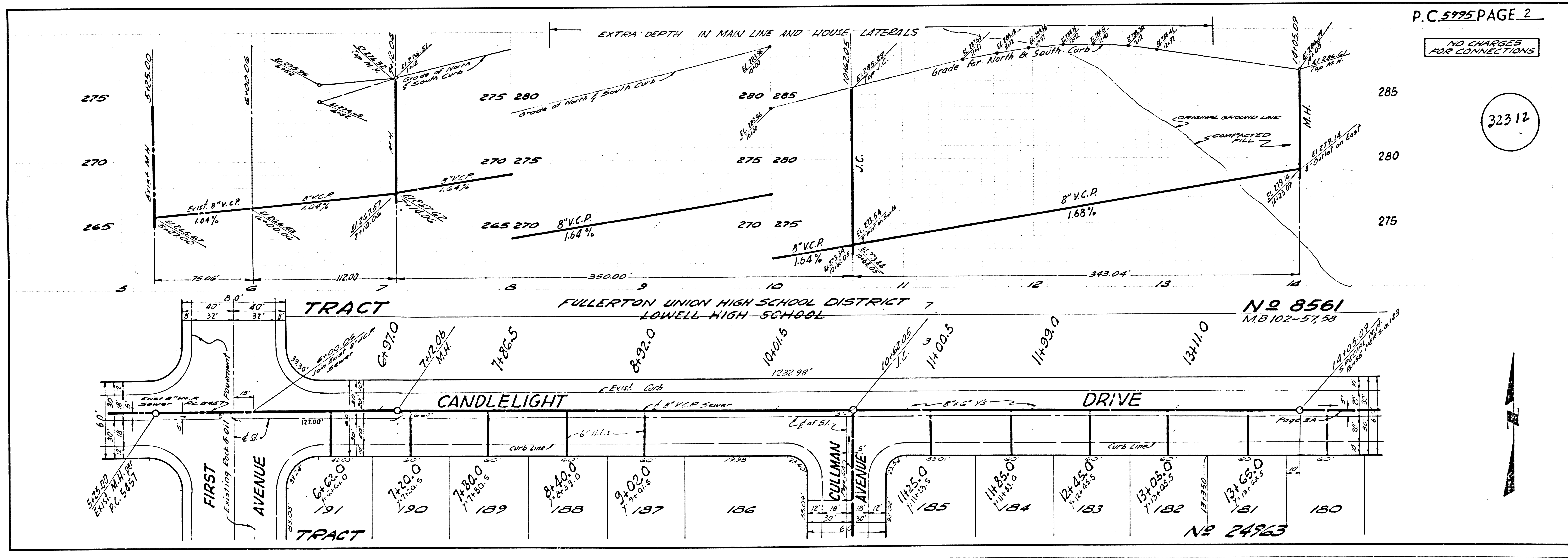


INDEX MAP  
 Scale 1" = 600'  
 TRACT NO. 24963  
 P.C. 5995  
 J.N. 0356.69

- NOTES:
- PROVIDE STAKES ON THE PROPERTY LINE OR PROPERTY LINES PRODUCED AT RIGHT ANGLES TO THE SEWER LINE AT THE CENTER LINE OF EACH MANHOLE.
  - NO REPRESENTATIVE OF THE COUNTY ENGINEER WILL SURVEY OR LAY OUT ANY PORTION OF THE WORK.
  - THE OWNER OR HIS AUTHORIZED REPRESENTATIVE SHALL FURNISH THE COUNTY ENGINEER WITH GRADE SHEETS AND STATIONING FOR ALL HOUSE LATERALS AND Y BRANCHES AND SHALL PROVIDE STAKES FOR THEM AT THEIR "PROPER LOCATIONS WITH STATIONING PLAINLY MARKED. ANY CHANGE IN LOCATION SHALL BE REQUESTED IN WRITING BY THE OWNER OR HIS REPRESENTATIVE.
  - THE PRIVATE ENGINEER SHALL FURNISH THE HOUSE LATERAL DEPTH AT THE PROPERTY LINE BELOW THE TOP OF CURB ELEVATION FOR EACH HOUSE LATERAL ON THE GRADE SHEET.
  - NO REVISIONS SHALL BE MADE IN THESE PLANS WITHOUT THE APPROVAL OF THE COUNTY ENGINEER.
  - USE STANDARD MANHOLE FRAMES AND COVERS, S-117.
  - USE EXTRA STRENGTH PIPE. ALL PIPE IS STANDARD DEPTH EXCEPT AS NOTED.
  - USE CEMENT MORTAR OR "WEDGE-LOCK" OR "SPREAD-SEAL" FOR ALL V.C.P. JOINTS PER SPECS. SECS. 36 & 41.
  - RESURFACE ALL TRENCH WITHIN PAVED AREA TO MEET L.A. COUNTY ROAD DEPT. OR CALIF. STATE HIGHWAY REQUIREMENTS IN ACCORDANCE WITH PERMITS.
  - ENCASE FOUR FEET OF SEWER AT POINTS OF INTERFERENCE WITH POLES, CASE III, S-172.
  - HOUSE LATERALS TO BE CONSTRUCTED WITH INVERTS AT PROPERTY LINE... 6... FEET BELOW CURB GRADE EXCEPT AS NOTED.
  - ALL STRUCTURES SHALL BE BRICK SEWER STRUCTURES, S-104, EXCEPT AS NOTED.
  - FOR ALLOWABLE LEAKAGE TEST USE FORMULA NO. 2, SPECS. SEC. 34.
  - MANHOLE TOPS IN UNIMPROVED RIGHTS-OF-WAY TO BE SIX INCHES ABOVE FINISHED GRADE.
  - THE CONTRACTOR SHALL NOTIFY THE CONSTRUCTION DIVISION BY TELEPHONE, MADISON 5-4747, AT LEAST TWENTY-FOUR HOURS BEFORE STARTING ANY WORK UNDER THIS CONTRACT.
  - STANDARD SPECIFICATIONS DATED OCTOBER 25, 1961 APPLY IN THE CONSTRUCTION OF THIS PROJECT.
  - A NO CONSTRUCTION SHALL BE PERMITTED IN FILLED AREAS UNLESS ADEQUATE GUARANTEE IS SUBMITTED TO THE CONSTRUCTION DIVISION OF THE COUNTY ENGINEER DEPT. THAT CONSTRUCTION IS LIMITED TO 20%.
  - IF THE CONSTRUCTION IS GREATER THAN 20% CONFINED OR SPECIAL MIN. DEEPS ARE NOT REQUIRED, HOWEVER, JOINT COMPACTED MUST BE ESTABLISHED FOR CEMENT MORTAR FOR ALL JOINTS IN FILLED AREAS. IF CONSTRUCTION IS LESS THAN 20% THE SEWER MUST BE CIRCLED AS SHOWN ON PLANS (PER S-117).

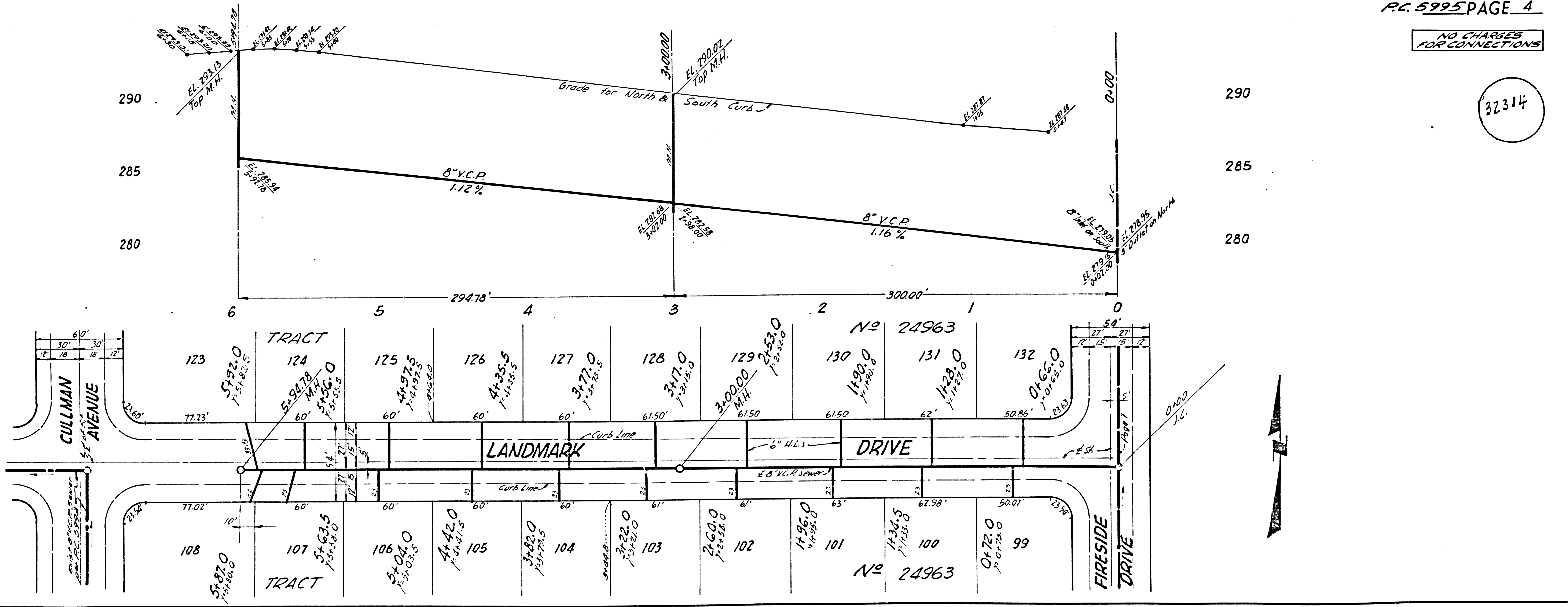
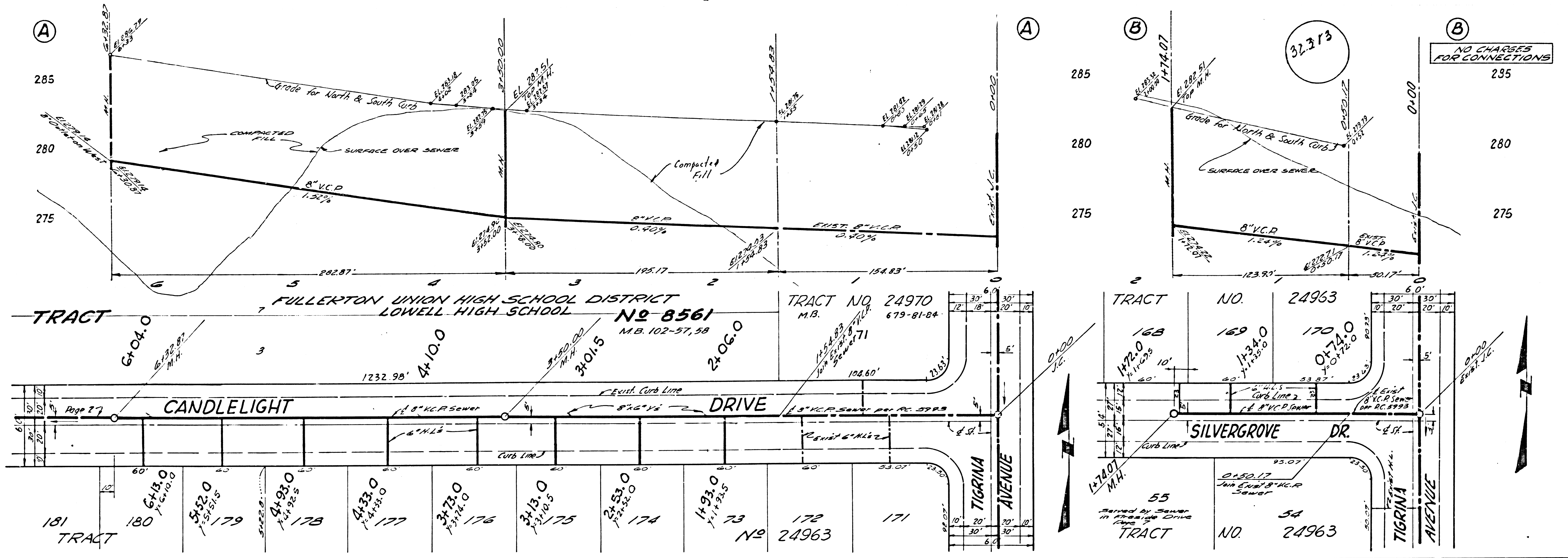
NO CONNECTIONS FOR THE DISPOSAL OF INDUSTRIAL WASTES SHALL BE MADE TO SEWERS SHOWN ON THESE DRAWINGS WITHOUT WRITTEN PERMITS FROM THE CHIEF ENGINEER AND GENERAL MANAGER OF THE COUNTY SANITATION DISTRICTS.

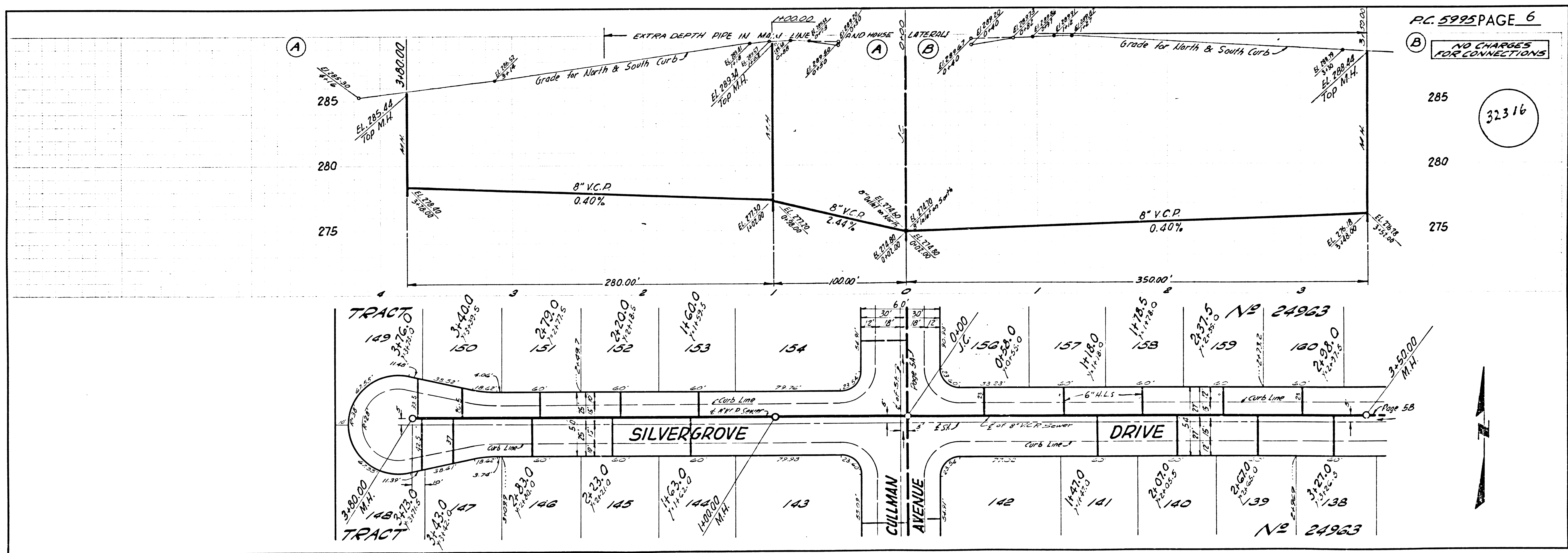
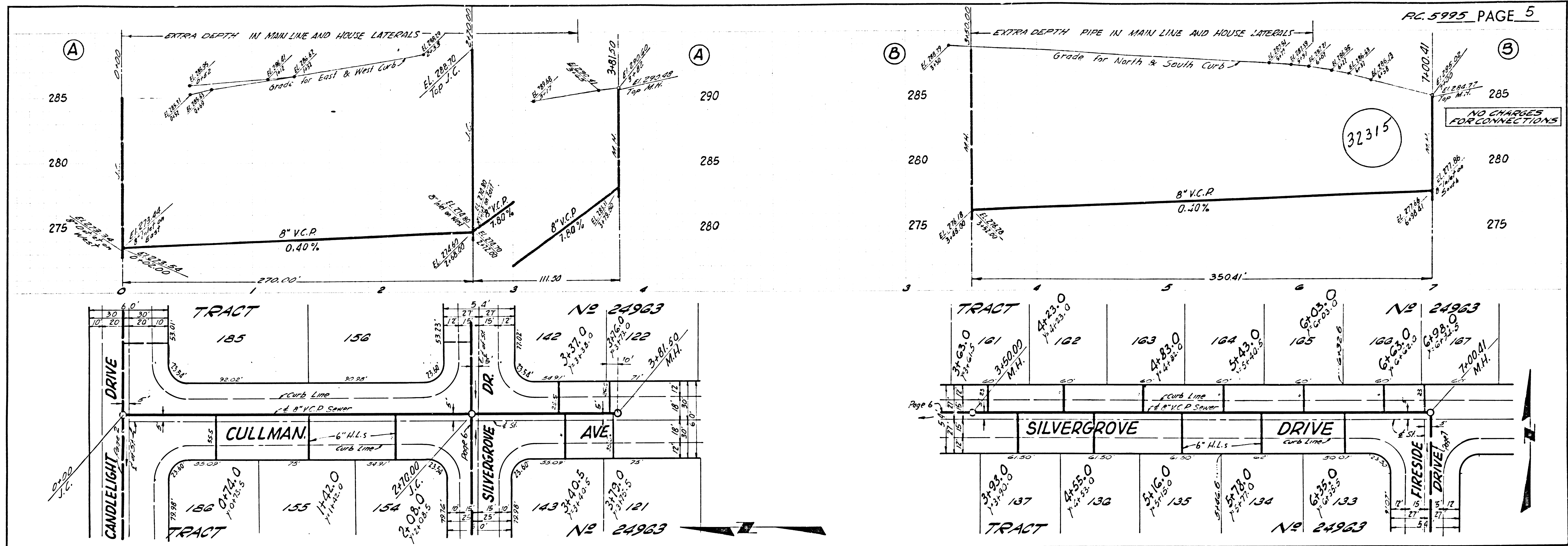
NOTE:  
 GRADES TO WHICH THIS IMPROVEMENT IS TO BE CONSTRUCTED ARE SHOWN ON PLANS AND PROFILES. GRADE POINTS FOR TOP OF CURB, CENTER LINE OF STREETS OR ALLEYS ARE SHOWN BY CIRCLES ON PROFILES. AT ALL POINTS BETWEEN DESIGNATED POINTS THE GRADE SHALL BE ESTABLISHED SO AS TO CONFORM TO A STRAIGHT LINE DRAWN BETWEEN SAID DESIGNATED POINTS.  
 ELEVATION ARE IN FEET ABOVE U.S.C. & G.S. SEA LEVEL DATUM OF 1929.  
 THIS DRAWING AND THE DATA HEREON ARE HEREBY MADE A PART OF THE SPECIFICATIONS.  
 WORK SHALL BE CONSTRUCTED ACCORDING TO SPECIFICATIONS ON FILE IN THE OFFICE OF THE COUNTY ENGINEER AND SHALL BE PROSECUTED ONLY IN THE PRESENCE OF THE COUNTY ENGINEER.  
 BEFORE WORK CAN BE STARTED, THE CONTRACTOR MUST OBTAIN A PERMIT TO EXCAVATE IN COUNTY STREETS FROM THE L.A. COUNTY ROAD DEPT. DISTRICT OFFICE NO. 6 AND PAY A FEE WITH THE COUNTY ENGINEER ROOM 310 COUNTY ENGINEER BLDG. 108 W. SECOND ST. SUFFICIENT TO COVER THE COST OF CONSTRUCTION INSPECTION AND RECORD PLANS.  
 APPROVAL OF THIS PLAN BY THE COUNTY OF LOS ANGELES DOES NOT CONSTITUTE A REPRESENTATION AS TO THE ACCURACY OF THE LOCATION OR THE EXISTENCE OR NON-EXISTENCE OF ANY UNDERGROUND UTILITY PIPE, OR STRUCTURE WITHIN THE LIMITS OF THIS PROJECT. THIS NOTE APPLIES TO ALL PAGES.  
 IF WORK IS TO BE DONE IN A STATE HIGHWAY, A PERMIT MUST BE OBTAINED FROM THE STATE OF CALIFORNIA, DIVISION OF HIGHWAYS, 120 SOUTH SPRING STREET.  
 COUNTY OF LOS ANGELES, CALIFORNIA  
 APPROVED, JOHN A. LAMBIE, COUNTY ENGINEER APPROVED, J.D. PARKHURST, CHIEF ENGINEER  
 CO. SAN. DIST. NO. 10  
 BY: *Richard E. Lambie* 2554 SANITATION ENGINEER BY: *J. D. Parkhurst* OFFICE ENGINEER  
 CHECKED BY: *W. L. Deane* 1-23-62  
 OFFICE OF COUNTY ENGINEER, REG. C. E. NO. 2466  
 SUBMITTED BY: *John L. Bate* 1-23-62  
 LOS ANGELES REGIONAL ENGINEER, REG. C. E. NO. 3871



NO CHARGES FOR CONNECTIONS

32312

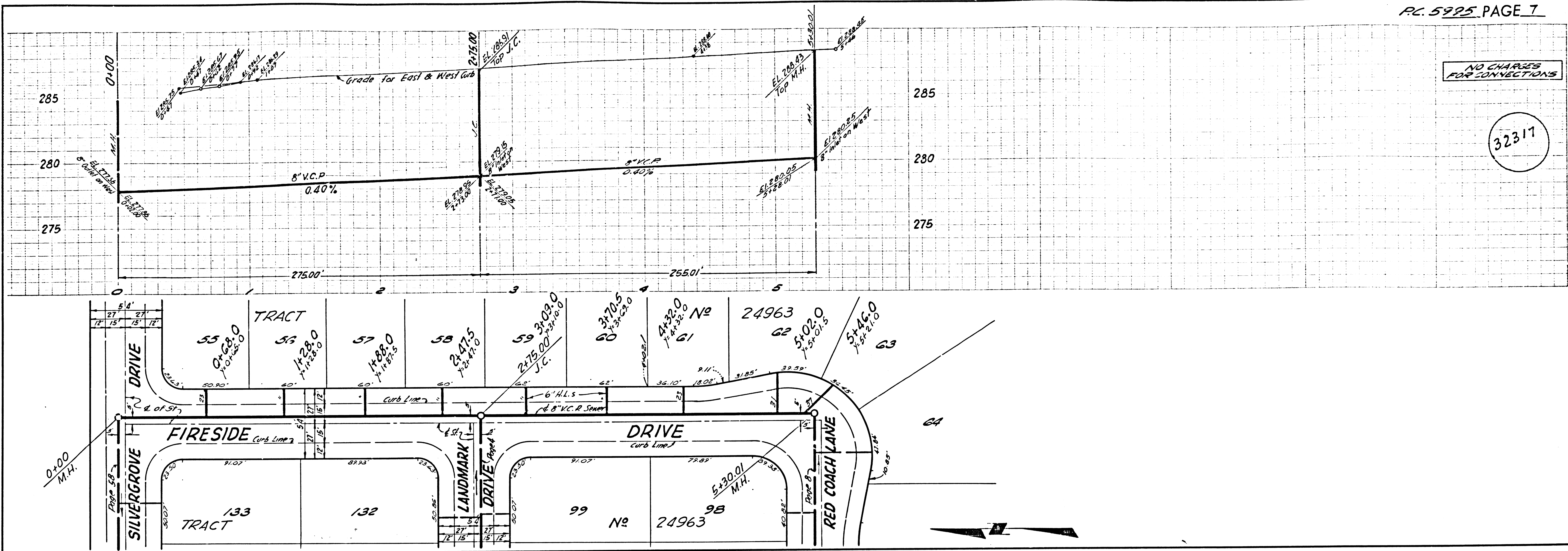




REVISIONS IN ORDER

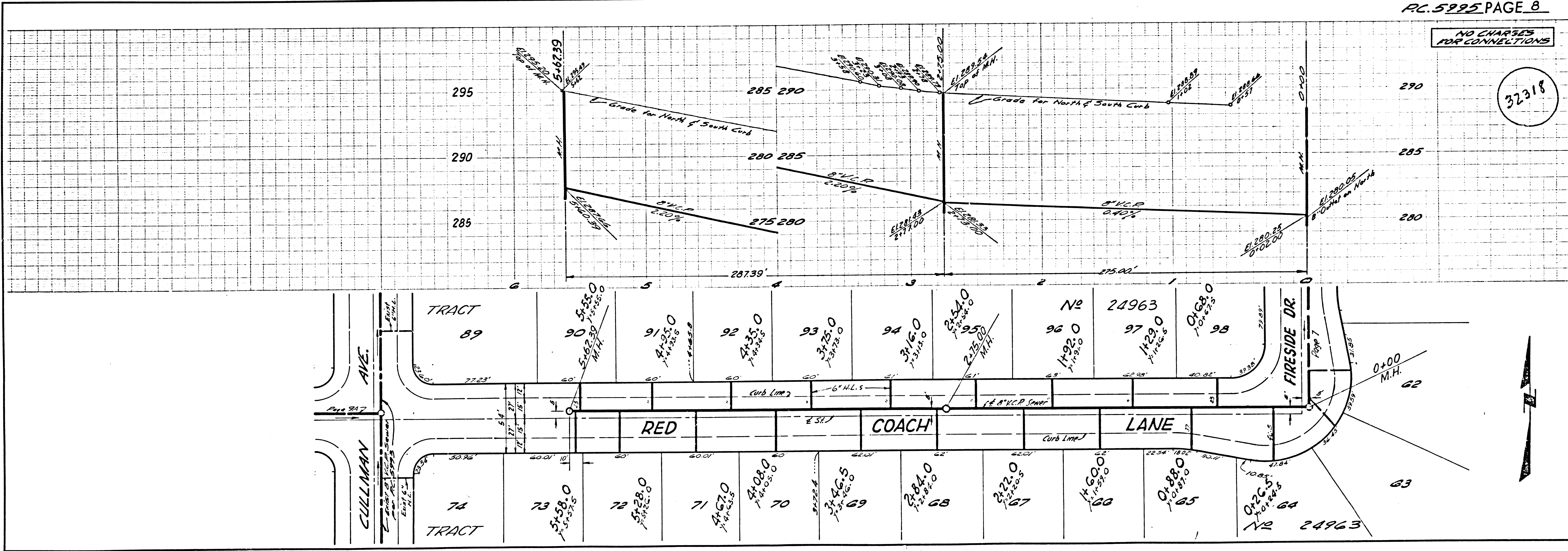
NO CHARGES FOR CONNECTIONS

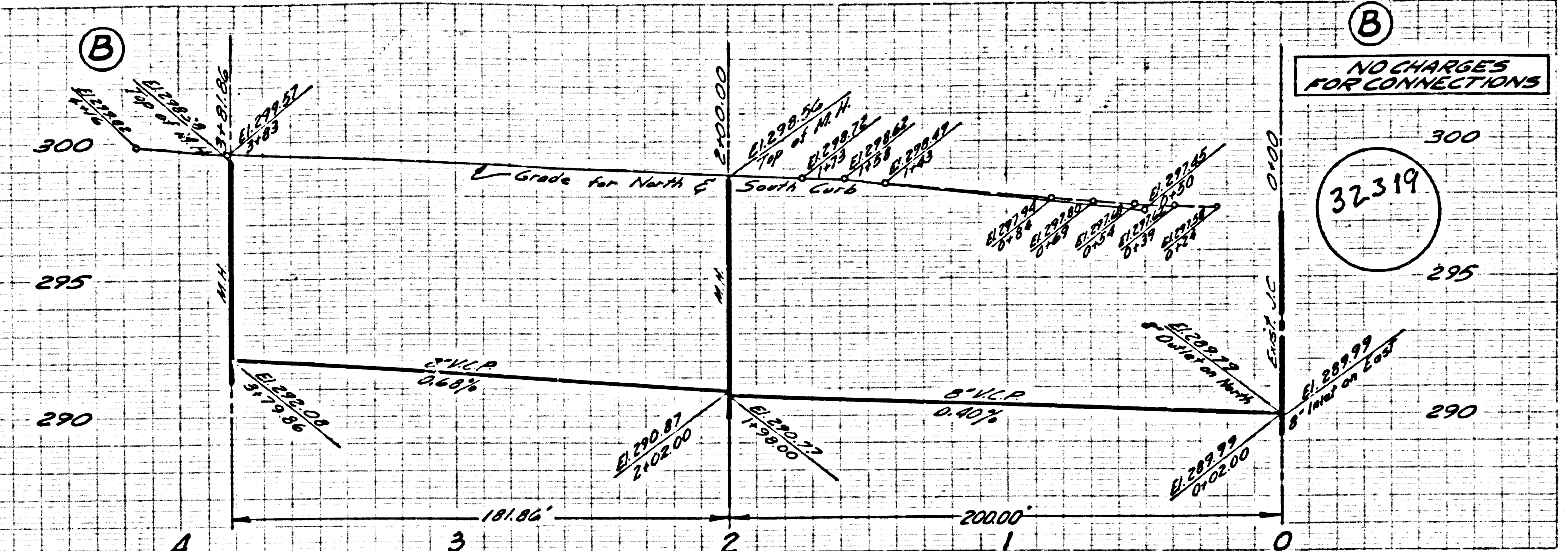
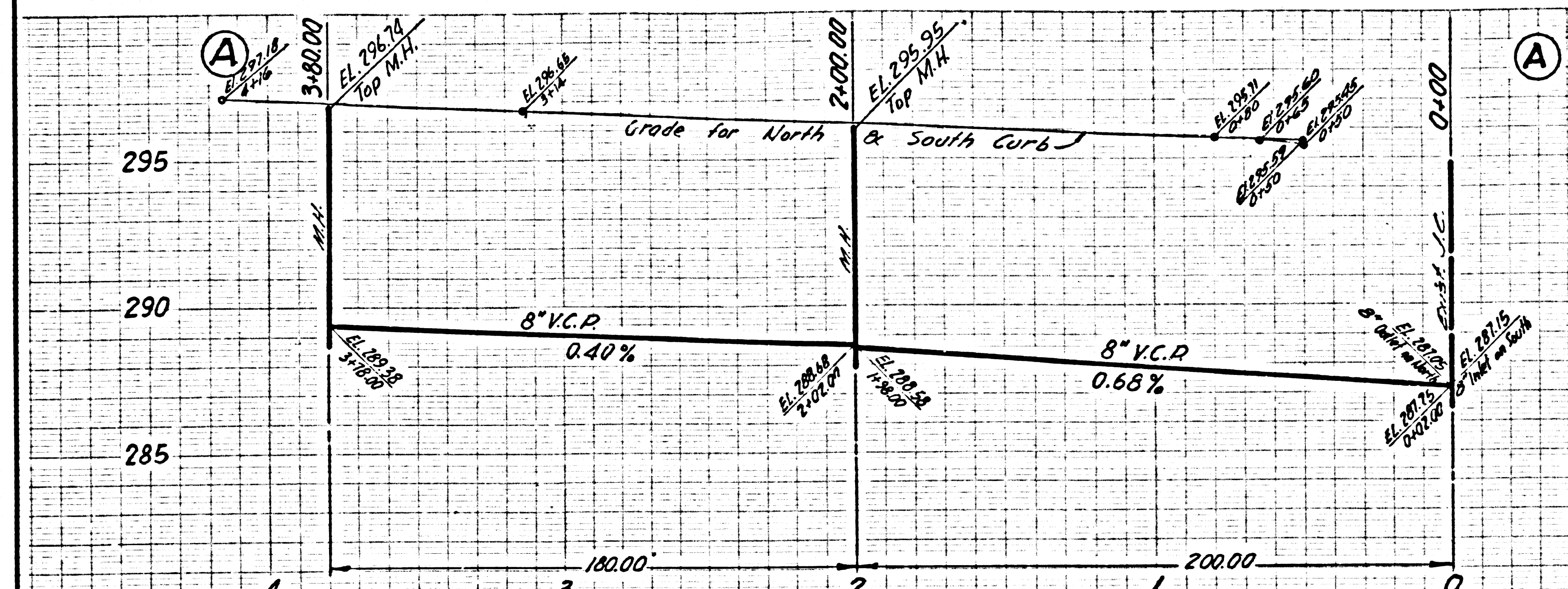
32317



NO CHARGES FOR CONNECTIONS

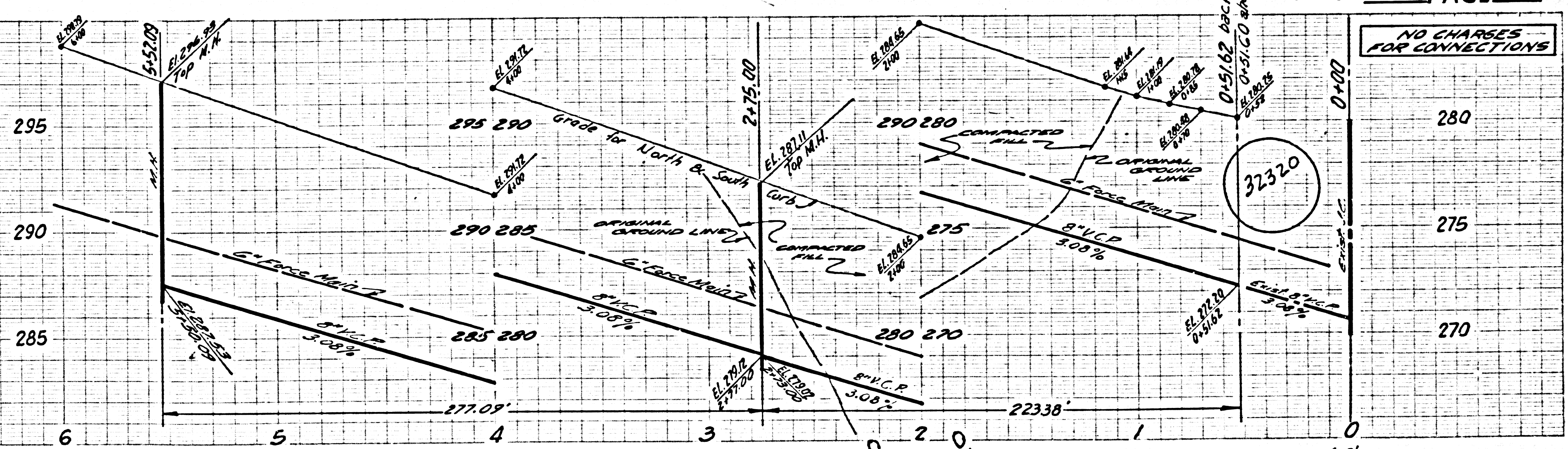
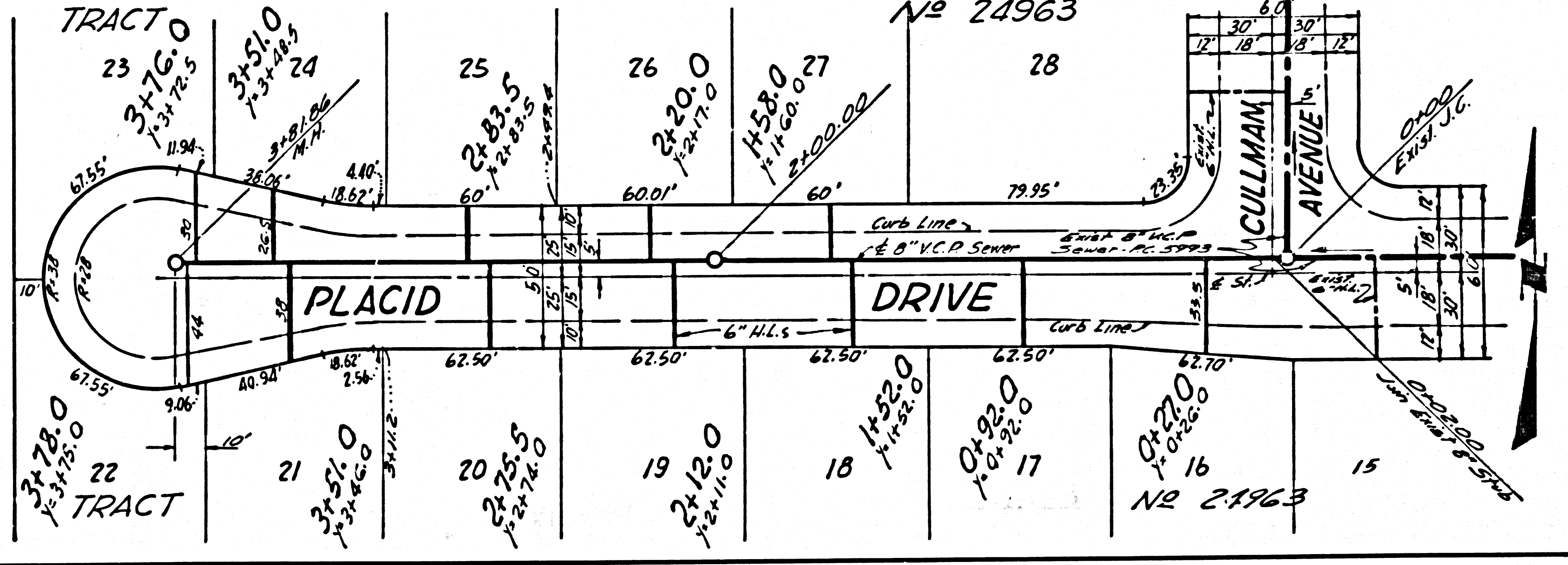
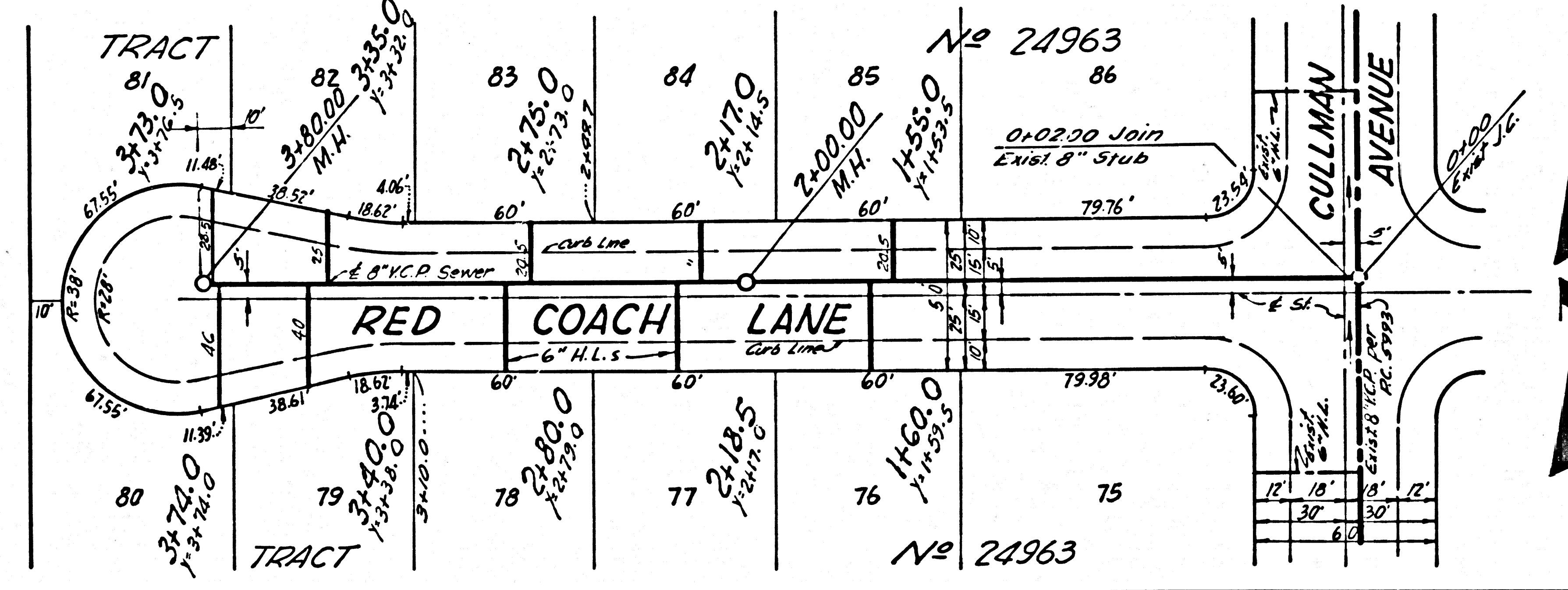
32318





NO CHARGES FOR CONNECTIONS

32319



NO CHARGES FOR CONNECTIONS

32320

