

BENCH MARK
 A STANDARD COUNTY SURVEYOR MON. SET IN CONCRETE 10" BELOW THE SURFACE MARKED B.M. 11791 1952, R.E. 63 AND LOCATED 8.3' WEST OF THE WEST EDGE OF MONOM. BLDG. AND 8.8' EAST OF THE EAST EDGE OF VALLEY BLVD. IN A WELL PROTECTED BY A CAST IRON COVER MARKED COUNTY SURVEYORS MONUMENT F.B. 1876-82 1952 ADJ. ELEVATION 684.191

**SAN DIMAS BLDG. DIST. NO. 10
 DOUBLE SCALE**

PROFILE ALIGNMENT AND GRADE OF **P.C. 5999**
SANITARY SEWERS PAGE 1
 TO BE CONSTRUCTED IN **JN 0356.70**

TRACT No 24731
PRIVATE CONTRACT NO. 5999

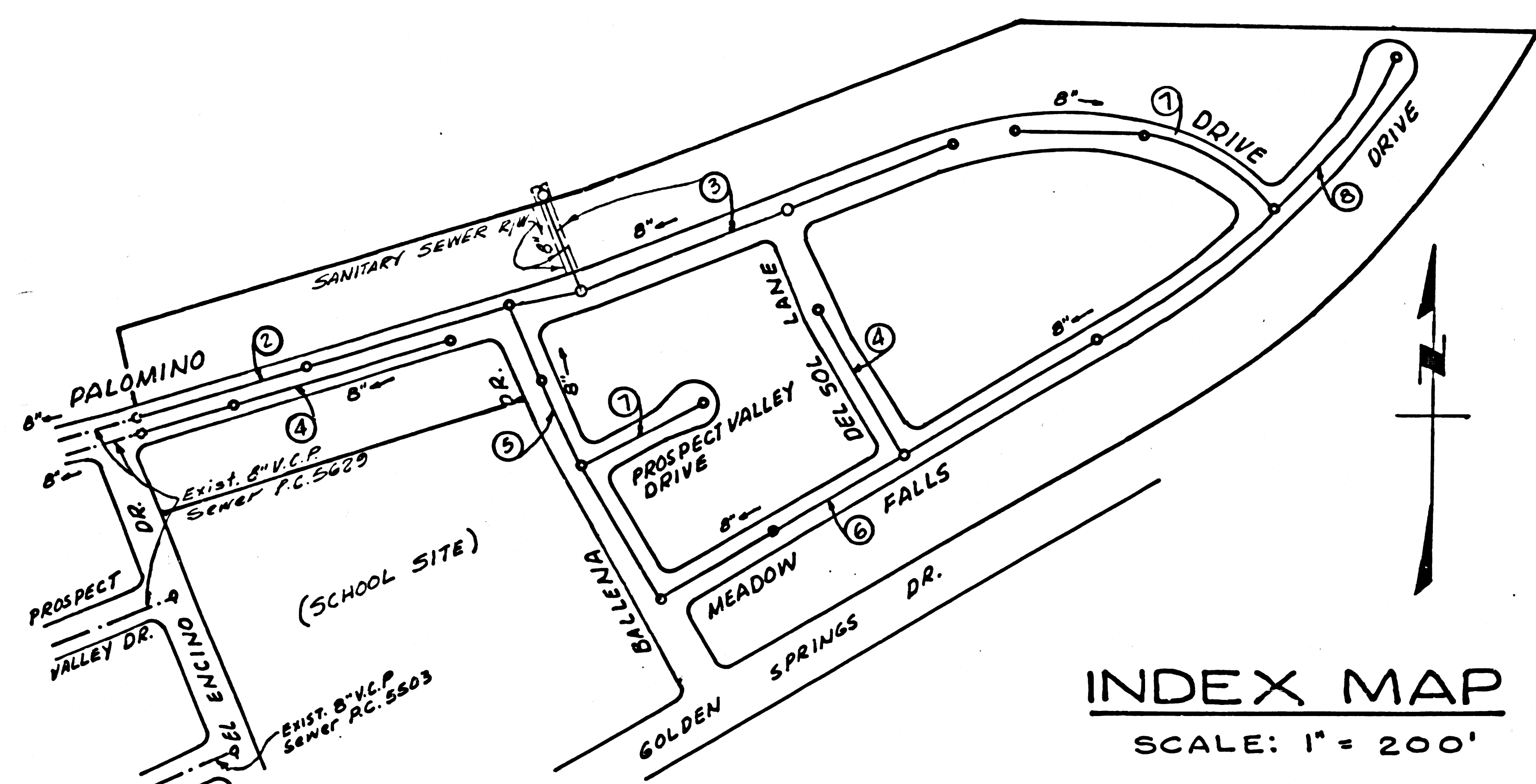
W.S. 39
 4 SHEETS; 8 PAGES
 SCALE: VERT. 1"=8' OCTOBER, 1961
 HORIZ. 1"=40'
 PREPARED IN THE OFFICES OF
BAKER PAFFORD & ASSOC.

32163

By: William B. Barrett
 REG. C. E. NO. 7423
 FOR LEGEND SEE PLAN NO. S-A-64

NOTE:
 GRADES TO WHICH THIS IMPROVEMENT IS TO BE CONSTRUCTED ARE SHOWN ON PLANS AND PROFILES. GRADE POINTS FOR TOP OF CURBS, CENTER LINE OF STREETS OR CENTER LINE OF ALLEYS ARE SHOWN BY CIRCLES ON PROFILES. AT ALL POINTS BETWEEN DESIGNATED POINTS THE GRADE SHALL BE ESTABLISHED SO AS TO CONFORM TO A STRAIGHT LINE DRAWN BETWEEN SAID DESIGNATED POINTS.
 ELEVATIONS ARE IN FEET ABOVE U.S.C. & G.S. SEA LEVEL DATUM OF 1929.
 THIS DRAWING AND THE DATA HEREON ARE HEREBY MADE A PART OF THE SPECIFICATIONS.
 WORK SHALL BE CONSTRUCTED ACCORDING TO SPECIFICATIONS ON FILE IN THE OFFICE OF THE COUNTY ENGINEER AND SHALL BE PROSECUTED ONLY IN THE PRESENCE OF THE COUNTY ENGINEER.
 BEFORE WORK CAN BE STARTED, THE CONTRACTOR MUST OBTAIN A PERMIT TO EXCAVATE IN COUNTY STREETS FROM THE L. A. COUNTY ROAD DEPT., DISTRICT OFFICE NO. 1, AND PAY A FEE TO THE COUNTY ENGINEER ROOM 310 L. A. COUNTY ENGINEER BLDG. 100 W. 2ND ST., SUFFICIENT TO COVER THE COST OF CONSTRUCTION INSPECTION AND RECORD PLANS.
 APPROVAL OF THIS PLAN BY THE COUNTY OF LOS ANGELES DOES NOT CONSTITUTE A REPRESENTATION AS TO THE ACCURACY OF THE LOCATION OR OF THE EXISTENCE OR NON-EXISTENCE OF ANY UNDERGROUND UTILITY PIPE, OR STRUCTURE WITHIN THE LIMITS OF THIS PROJECT. THIS NOTE APPLIES TO ALL PAGES.
 IF WORK IS TO BE DONE IN A STATE HIGHWAY, A PERMIT MUST BE OBTAINED FROM THE STATE OF CALIFORNIA, DIVISION OF HIGHWAYS, 120 SOUTH SPRING STREET.

COUNTY OF LOS ANGELES, CALIFORNIA
 APPROVED, JOHN A. LAMBIE, COUNTY ENGINEER APPROVED, J. PARKHURST, CHIEF ENGINEER
 SAN. DIST. NO. 21
 BY: L. H. Hughes BY: J. Parkhurst
 SANITARY ENGINEER OFFICE ENGINEER
 CHECKED BY: B. F. Worling 10-27-61
 OFFICE OF COUNTY ENGINEER, REG. C. E. NO. 11636
 SUBMITTED W. C. Reinhardt
 SAN DIMAS REGIONAL ENGINEER

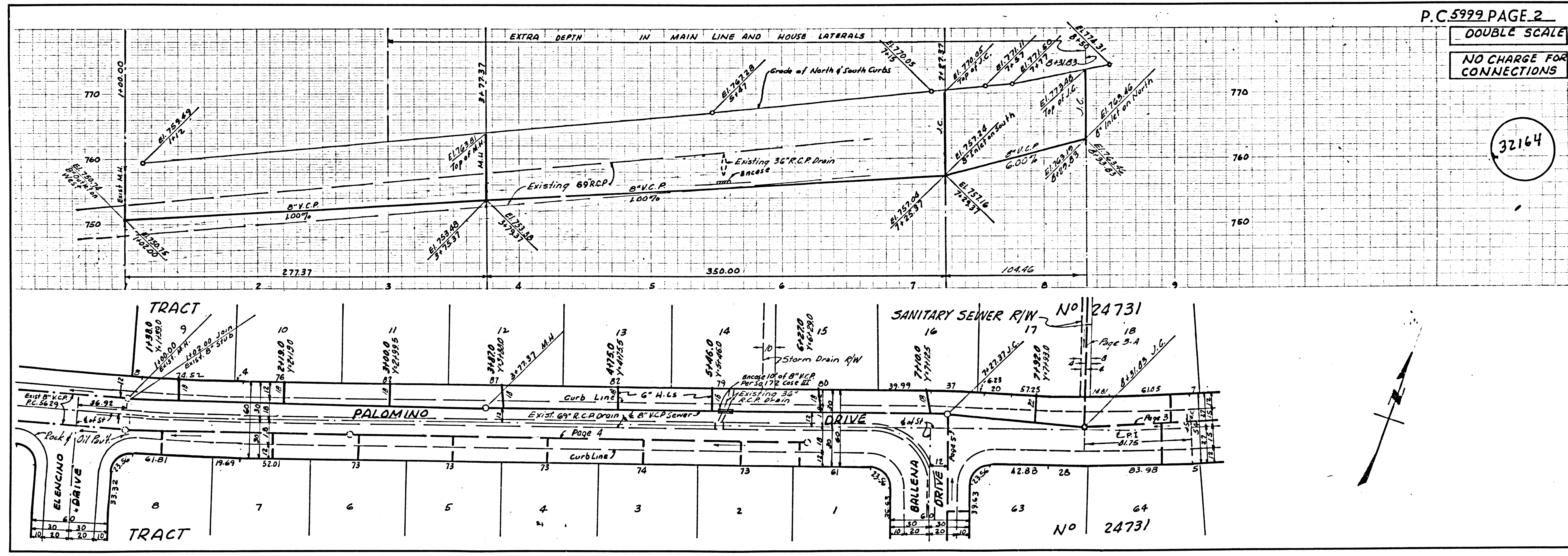


INDEX MAP
 SCALE: 1" = 200'

- NOTES:**
- PROVIDE STAKES ON THE PROPERTY LINE OR PROPERTY LINES PRODUCED AT RIGHT ANGLES TO THE SEWER LINE AT THE CENTER LINE OF EACH MANHOLE.
 - NO REPRESENTATIVE OF THE COUNTY ENGINEER WILL SURVEY OR LAY OUT ANY PORTION OF THE WORK.
 - THE OWNER OR HIS AUTHORIZED REPRESENTATIVE SHALL FURNISH THE COUNTY ENGINEER WITH GRADE SHEETS AND STATIONING FOR ALL HOUSE LATERALS AND Y BRANCHES AND SHALL PROVIDE STAKES FOR THEM AT THEIR PROPER LOCATIONS WITH STATIONING PLAINLY MARKED. ANY CHANGE IN LOCATION SHALL BE REQUESTED IN WRITING BY THE OWNER OR HIS REPRESENTATIVE.
 - THE PRIVATE ENGINEER SHALL FURNISH THE HOUSE LATERAL DEPTH AT THE PROPERTY LINE BELOW THE TOP OF CURB ELEVATION FOR EACH HOUSE LATERAL ON THE GRADE SHEET.
 - NO REVISIONS SHALL BE MADE IN THESE PLANS WITHOUT THE APPROVAL OF THE COUNTY ENGINEER.
 - USE STANDARD MANHOLE FRAMES AND COVERS, S-117.
 - USE EXTRA STRENGTH PIPE ALL PIPE STANDARD DEPTH EXCEPT AS NOTED.
 - USE CEMENT MORTAR OR "WEDGE-LOCK" OR "SPEED-SEAL" FOR ALL J.C.P. JOINTS PER SPEC'S, SECS. 36 & 48.
 - RESURFACE ALL TRENCH WITHIN PAVED AREA TO MEET L.A. COUNTY ROAD DEPT. OR CALIF. STATE HIGHWAY REQUIREMENTS IN ACCORDANCE WITH PERMITS.
 - ENCASE FOUR FEET OF SEWER AT POINTS OF INTERFERENCE WITH POLES, CASE III, S-4-172.
 - HOUSE LATERALS TO BE CONSTRUCTED WITH INVERTS AT PROPERTY LINE - 6 FEET BELOW CURB GRADE EXCEPT AS NOTED.
 - ALL STRUCTURES SHALL BE BRICK SEWER STRUCTURES, S-104.
 - FOR ALLOWABLE LEAKAGE TEST USE FORMULA NO. 1, SPEC'S, SEC. 44.
 - MANHOLE TOPS IN UNIMPROVED RIGHTS-OF-WAY TO BE SIX INCHES ABOVE FINISHED GRADE.
 - THE CONTRACTOR SHALL NOTIFY THE CONSTRUCTION DIVISION BY TELEPHONE, MADISON 9-4177, EXT. 8181 AT LEAST TWENTY-FOUR HOURS BEFORE STARTING ANY WORK UNDER THIS CONTRACT.
 - STANDARD SPECIFICATIONS DATED OCTOBER 25, 1961 APPLY IN THE CONSTRUCTION OF THIS PROJECT.
 - SEWERS IN FILLED GROUND
 - (a) NO CONSTRUCTION WILL BE PERMITTED IN FILLED AREAS UNLESS ACCEPTABLE CERTIFICATION IS SUBMITTED TO THE CONSTRUCTION DIVISION OF THE COUNTY ENGINEER'S DEPARTMENT THAT RELATIVE COMPACTION IS GREATER THAN 80%.
 - (b) IF COMPACTION IS LESS THAN 80%, THE SEWER MUST BE CRADLED AS SHOWN ON PLANS PER S-0-166, CRAWLING.
 - (c) IF COMPACTION IS GREATER THAN 80%, NEITHER A SPECIAL MANHOLE BASES WILL BE REQUIRED. HOWEVER, JOINT COMPOUND OR WEDGE-LOCK OR "SPEED-SEAL" MUST BE SUBSTITUTED FOR CEMENT MORTAR FOR ALL JOINTS IN FILLED AREAS.
 - WORDS IN CIRCLES AT ENDS OF HOUSE LATERALS INDICATE THAT INVERTS SHALL BE LAYED HORIZONTAL AND HOUSE LATERALS SHALL BE CONSTRUCTED WITH A 1/4" RISE PER FOOT TO PROPERTY LINE.

NO CHARGE FOR CONNECTIONS
 71.77' December 19-24

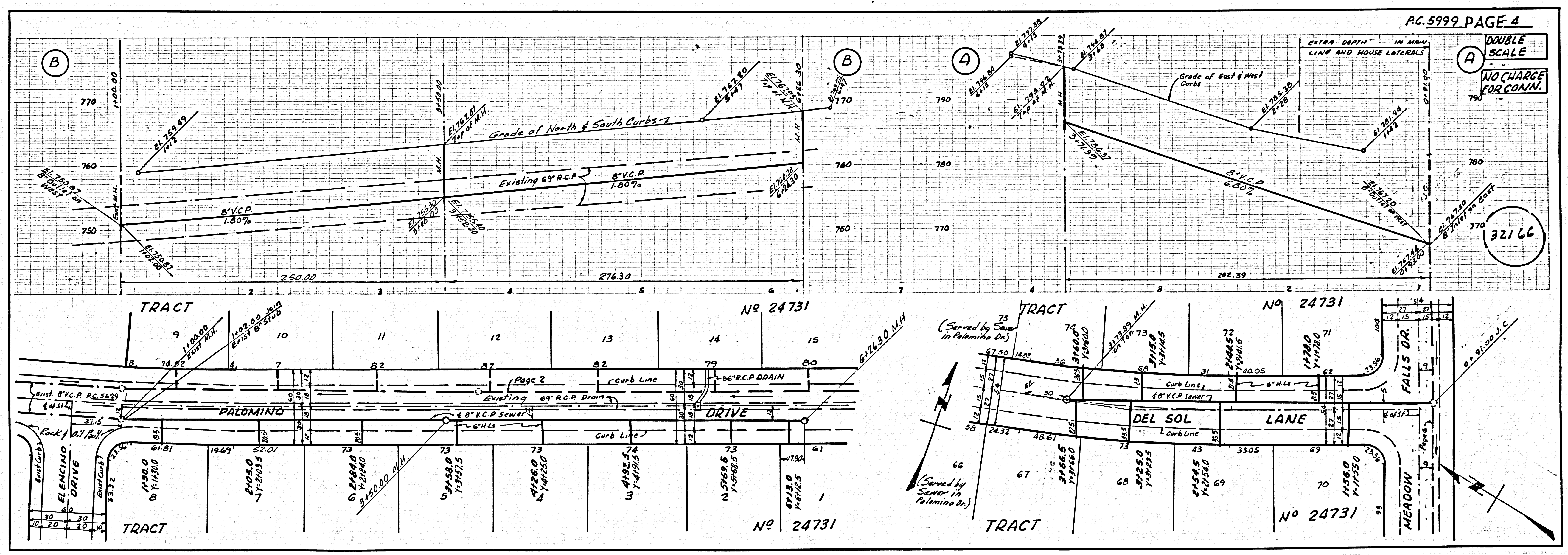
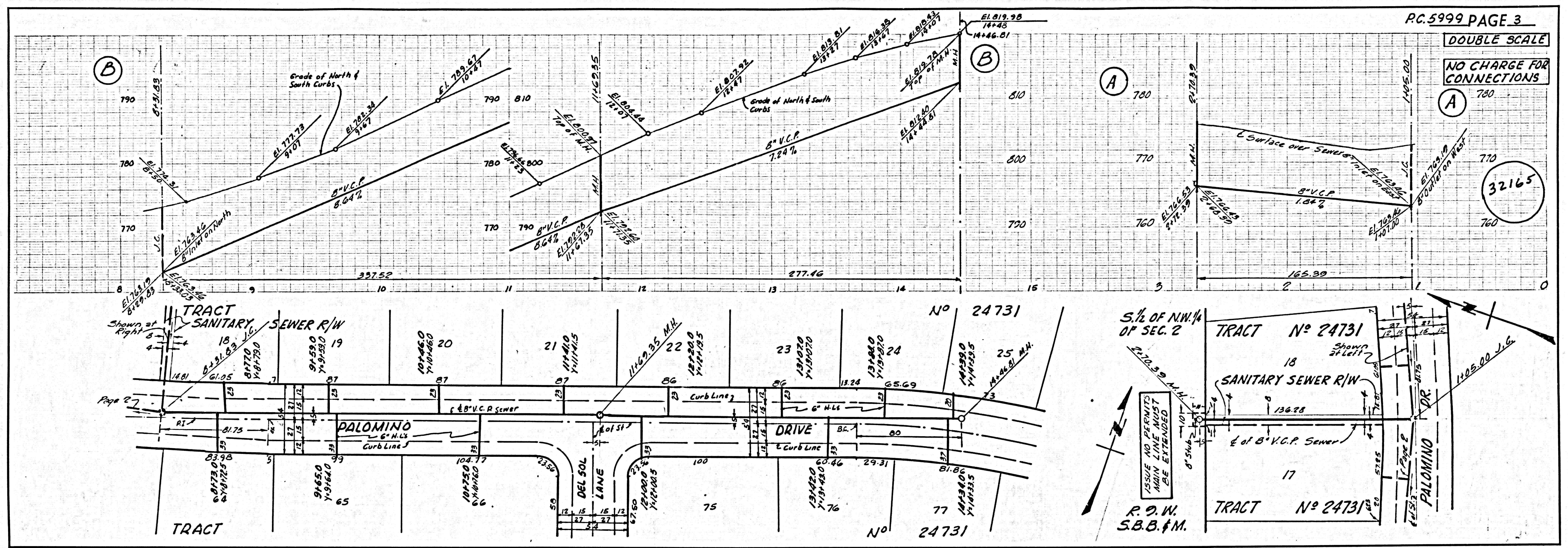
NO CONNECTIONS FOR THE DISPOSAL OF INDUSTRIAL WASTES SHALL BE MADE TO SEWERS SHOWN ON THESE DRAWINGS WITHOUT WRITTEN PERMISSION FROM THE CHIEF ENGINEER AND GENERAL MANAGER OF THE COUNTY SANITATION DISTRICTS.



P.C. 5999 PAGE 2
DOUBLE SCALE
NO CHARGE FOR CONNECTIONS

32164

PROPERTY OF THE COUNTY OF LOS ANGELES

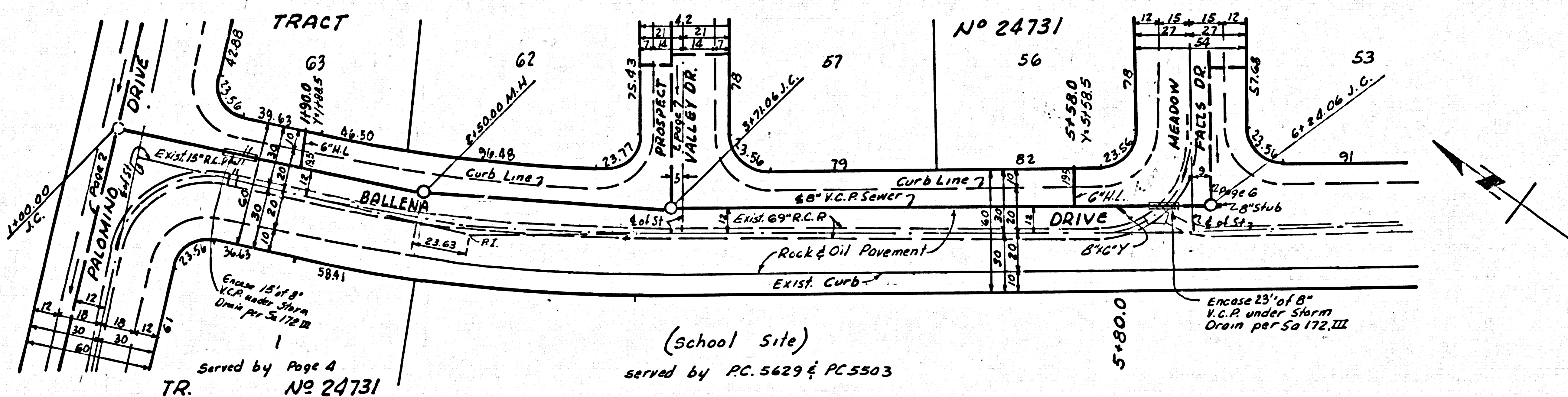
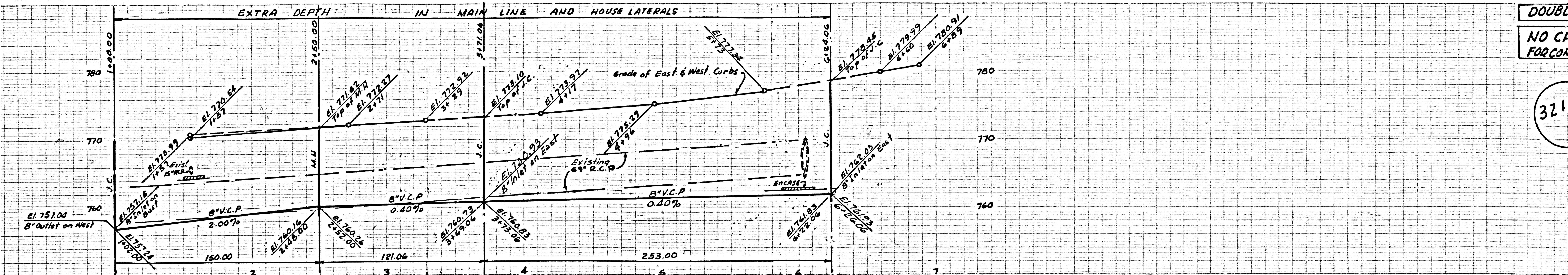


PROPERTY OF THE

DOUBLE SCALE

NO CHARGE FOR CONNECTIONS

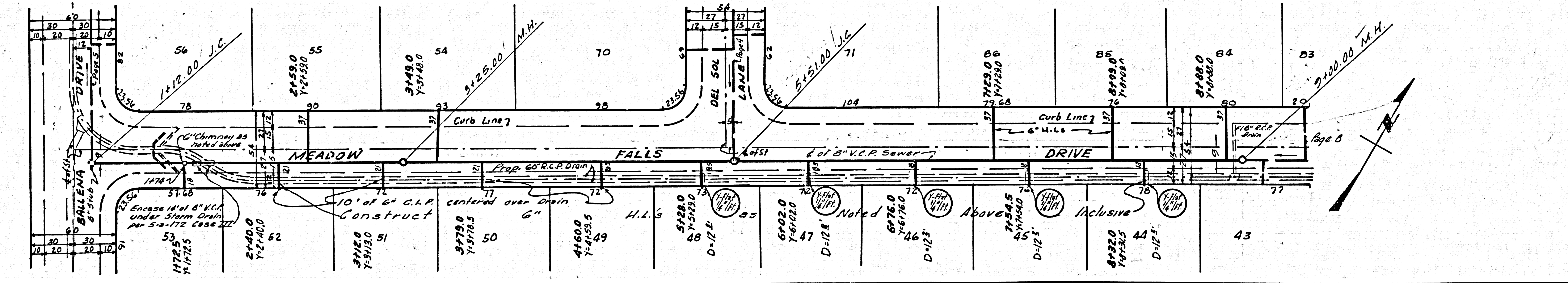
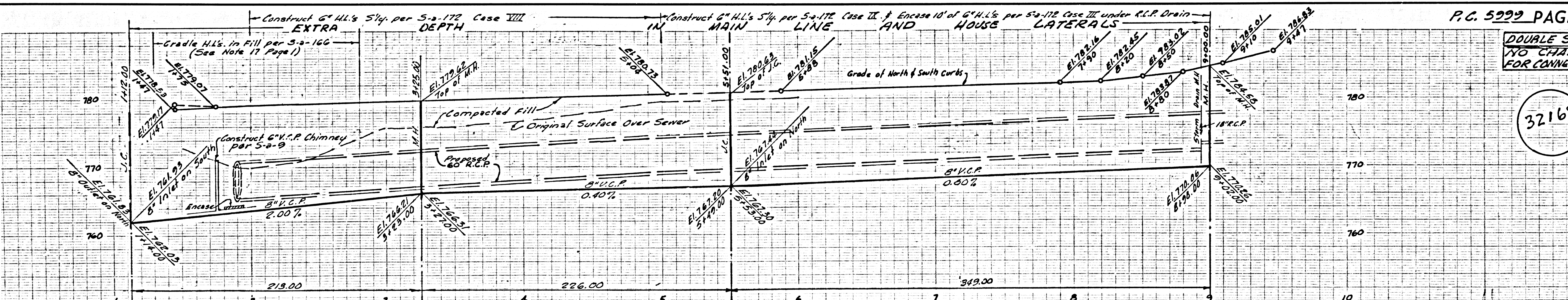
32167



DOUBLE SCALE

NO CHARGE FOR CONNECTIONS

32168



PROPERTY OF THE

