

DESIRE AVENUE  
(ALVARADO SCHOOL SEWER)  
PRIVATE CONTRACT NO. 6000

W.S. 38

2 SHEETS; 3 PAGES

SCALE: VERT. 1"=4' JULY 1962

PREPARED IN THE OFFICES OF  
DUTCH HOLZHAUER & ASSOCIATES

By: *D. C. Hoffman*  
REG. NO. 10219

FOR LEGEND SEE PLAN NO. S-A-64

NOTE:  
GRADES TO WHICH THIS IMPROVEMENT IS TO BE CONSTRUCTED ARE SHOWN ON PLANS AND PROFILES. GRADE POINTS FOR TOP OF CURB, CENTER LINE OF STREETS, OR CENTER LINE OF ALLEYS ARE SHOWN BY CIRCLES ON PROFILES. AT ALL POINTS BETWEEN DESIGNATED POINTS THE GRADE SHALL BE ESTABLISHED SO AS TO CONFORM TO A STRAIGHT LINE DRAWN BETWEEN SAID DESIGNATED POINTS.  
ELEVATIONS ARE IN FEET ABOVE U.S.C. & G.S. SEA LEVEL DATUM OF 1929.  
THIS DRAWING AND THE DATA HEREON ARE HEREBY MADE A PART OF THE SPECIFICATIONS.  
WORK SHALL BE CONSTRUCTED ACCORDING TO SPECIFICATIONS ON FILE IN THE OFFICE OF THE COUNTY ENGINEER AND SHALL BE PROSECUTED ONLY IN THE PRESENCE OF THE COUNTY ENGINEER.  
BEFORE WORK CAN BE STARTED, THE CONTRACTOR MUST OBTAIN A PERMIT TO EXCAVATE IN COUNTY STREETS FROM THE L. A. COUNTY ROAD DEPT., DISTRICT OFFICE NO. 1, AND PAY A FEE TO THE COUNTY ENGINEER ROOM 310 1/2 S. GIGUERE BLDG. 108 W. 2ND ST. L.A. SUFFICIENT TO COVER THE COST OF CONSTRUCTION INSPECTION AND RECORD PLANS.  
APPROVAL OF THIS PLAN BY THE COUNTY OF LOS ANGELES DOES NOT CONSTITUTE A REPRESENTATION AS TO THE ACCURACY OR THE LOCATION OR THE EXISTENCE OR NON-EXISTENCE OF ANY UNDERGROUND UTILITY PIPE, OR STRUCTURE WITHIN THE LIMITS OF THIS PROJECT. THIS NOTE APPLIES TO ALL PAGES.  
IF WORK IS TO BE DONE IN A STATE HIGHWAY, A PERMIT MUST BE OBTAINED FROM THE STATE OF CALIFORNIA, DIVISION OF HIGHWAYS, 128 SOUTH SPRING STREET.

COUNTY OF LOS ANGELES, CALIFORNIA

APPROVED, JOHN A. LAMBIE, COUNTY ENGINEER APPROVED, J.D. PARKHURST, CHIEF ENGINEER  
By: *D. C. Hoffman* By: *J. D. Parkhurst*  
SANITATION ENGINEER OFFICE ENGINEER  
CHECKED BY: *D. K. White* 8-3-62  
OFFICE OF COUNTY ENGINEER, REG. C. E. NO. 9466

SUBMITTED: *W. C. Reinhardt* 7-27-62  
SAN DIMAS REGIONAL ENGINEER

BENCH MARK 44-10 FB 1366-112  
AT 5TH AVENUE & DESIRE AVE 11' SOUTH OF  
E. OF PAVEMENT OF 5TH AVE. & ON N.W. LY  
PROLONGATION OF W. LY EDGE OF PAVT  
ON DESIRE AVE. ASTD. C.S. MON IN  
HANDHOLE STAMPED BM 44-10 1955 ADJ.  
RE-63  
BASELINE 1955 ELEV. 468.306

PRIVATE ENGINEER'S  
NOTICE TO CONTRACTOR

The existence and location of any underground utility pipes or structures shown on these plans are obtained by a search of the available records. To the best of our knowledge there are no existing utilities except as shown on these plans.

The contractor is required to take due precautionary measures to protect the utility lines shown and any other lines not of record or not shown on these plans.

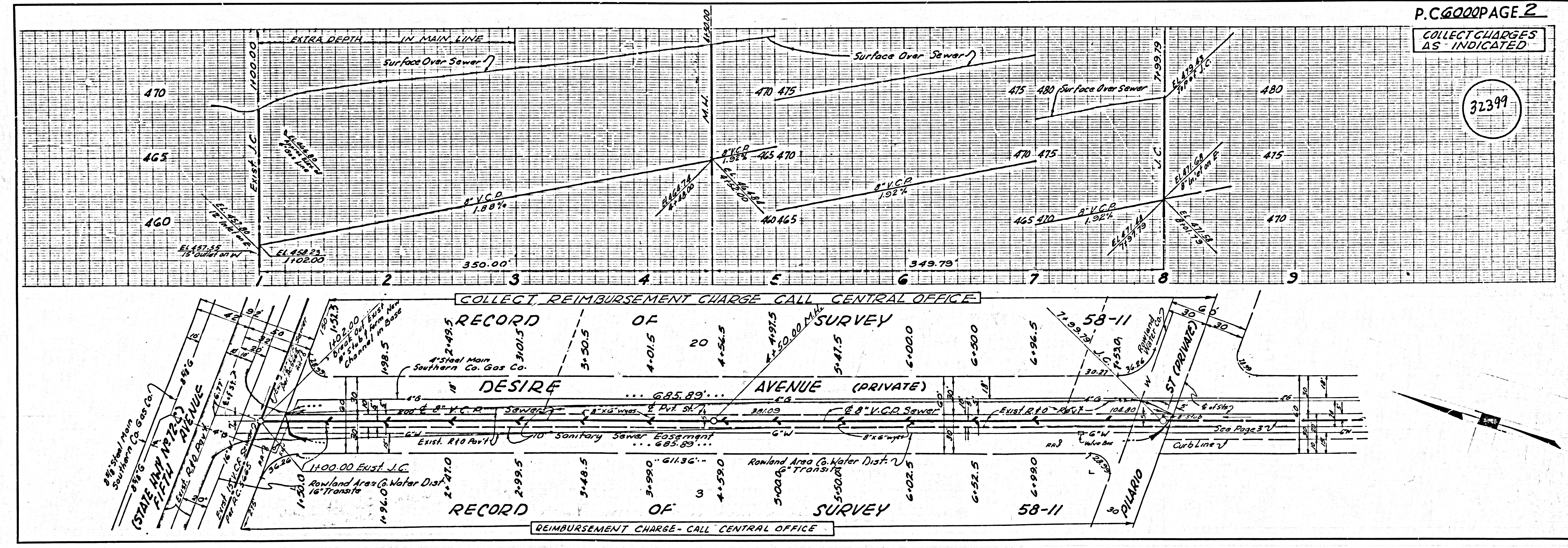
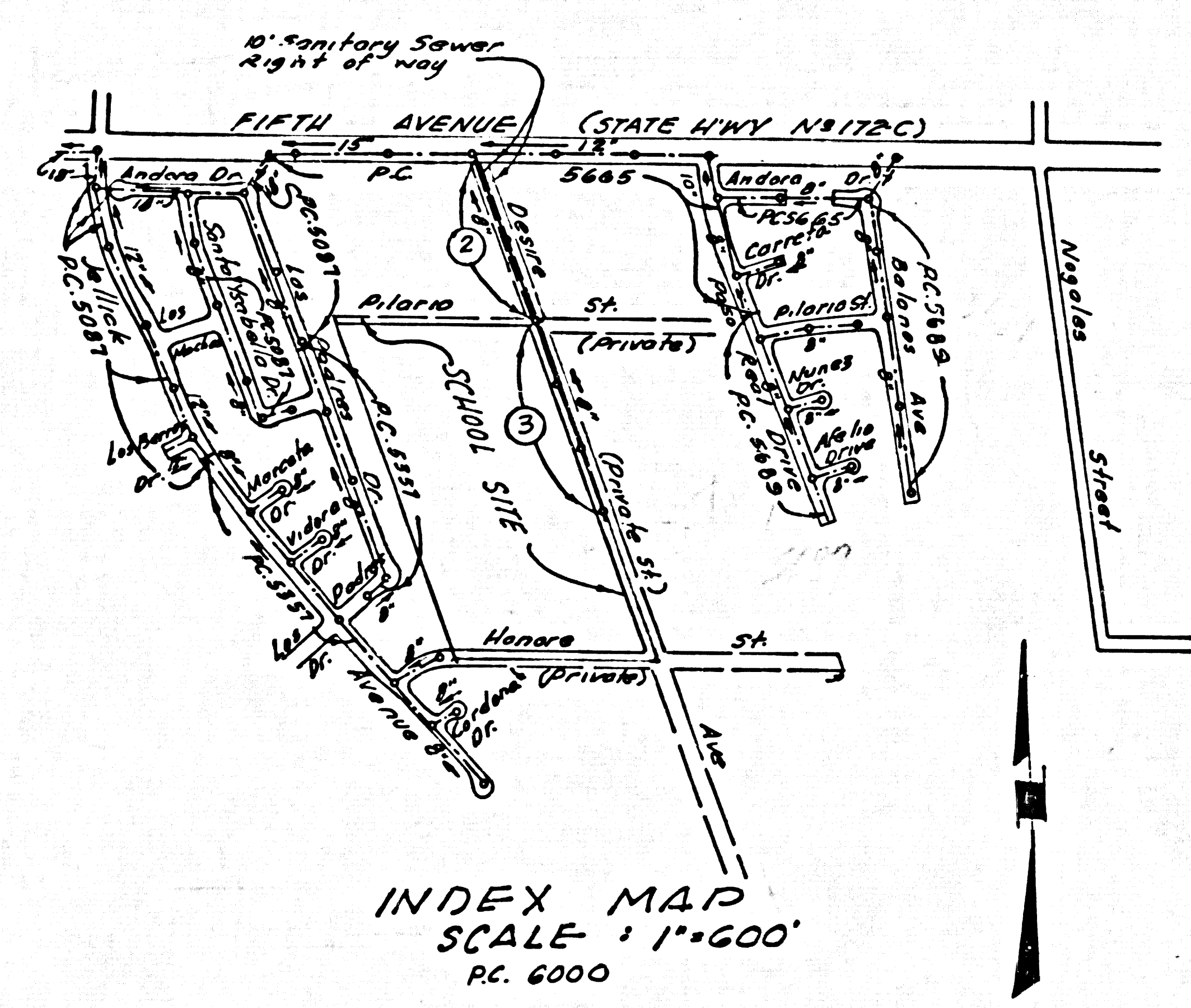
*D. C. Hoffman*  
R.C.E. No. 10219

PUE-NT E BLDG. DIST. NO. 2

- 1. PROVIDE STAKES ON THE PROPERTY LINE OR PROPERTY LINES PRODUCED AT RIGHT ANGLES TO THE SEWER LINE AT THE CENTER LINE OF EACH MANHOLE.
- 2. NO REPRESENTATIVE OF THE COUNTY ENGINEER WILL SURVEY OR LAY OUT ANY PORTION OF THE WORK.
- 3. THE OWNER OR HIS AUTHORIZED REPRESENTATIVE SHALL FURNISH THE COUNTY ENGINEER WITH GRADE SHEETS AND STATIONING FOR ALL HOUSE LATERALS AND Y BRANCHES AND SHALL PROVIDE STAKES FOR THEM AT THEIR PROPER LOCATIONS WITH STATIONING PLAINLY MARKED. ANY CHANGE IN LOCATION SHALL BE REQUESTED IN WRITING BY THE OWNER OR HIS REPRESENTATIVE.
- 4. THE PRIVATE ENGINEER SHALL FURNISH THE HOUSE LATERAL DEPTH AT THE PROPERTY LINE BELOW THE TOP OF CURB ELEVATION FOR EACH HOUSE LATERAL ON THE GRADE SHEET.
- 5. NO REVISIONS SHALL BE MADE IN THESE PLANS WITHOUT THE APPROVAL OF THE COUNTY ENGINEER.
- 6. USE STANDARD MANHOLE FRAMES AND COVERS, S-117, EXCEPT AS NOTED.
- 7. USE EXTRA STRENGTH PIPE, ALL RISE STANDARD DEPTH EXCEPT AS NOTED.
- 8. USE MECHANICAL COMPRESSION JOINTS FOR ALL V.C.P. PIPE SPEC. SEC. 36, 40, & 49.
- 9. RESURFACE ALL TRENCH WITHIN PAVED AREA TO MEET L.A. COUNTY ROAD DEPT. OR CALIF. STATE HIGHWAY REQUIREMENTS IN ACCORDANCE WITH PERMITS.
- 10. ENCASE FOUR FEET OF SEWER AT POINTS OF INTERFERENCE WITH POLES, CASE III, S-172.
- 11. HOUSE LATERALS TO BE CONSTRUCTED WITH INVERTS AT PROPERTY LINE 6 FEET BELOW CURB GRADE EXCEPT AS NOTED.
- 12. MANHOLES SHALL BE BUILT SEWER STRUCTURES S-104 PRECAST CONCRETE MANHOLES PER S-104-122. ALL 24" DIA. MANHOLE LIDS AS AN ALTERNATE TO LIDINGS APPROVED BY THE COUNTY ENGINEER.
- 13. FOR ALLOWABLE LEAKAGE TEST USE FORMULA NO. 1 SPEC. SEC. 34.
- 14. MANHOLE TOPS IN UNIMPROVED RIGHTS-OF-WAY TO BE SIX INCHES ABOVE FINISHED GRADE.
- 15. THE CONTRACTOR SHALL NOTIFY THE CONSTRUCTION DIVISION BY TELEPHONE, MADISON 5-477, AT LEAST TWENTY-FOUR HOURS BEFORE STARTING ANY WORK UNDER THIS CONTRACT.
- 16. STANDARD SPECIFICATIONS DATED MAY 25, 1962, APPLY IN THE CONSTRUCTION OF THIS PROJECT.

NO CONNECTIONS FOR THE DISPOSAL OF INDUSTRIAL WASTES SHALL BE MADE TO SEWERS SHOWN ON THESE DRAWINGS WITHOUT WRITTEN PERMISSION FROM THE CHIEF ENGINEER AND GENERAL MANAGER OF THE COUNTY SANITATION DISTRICTS.

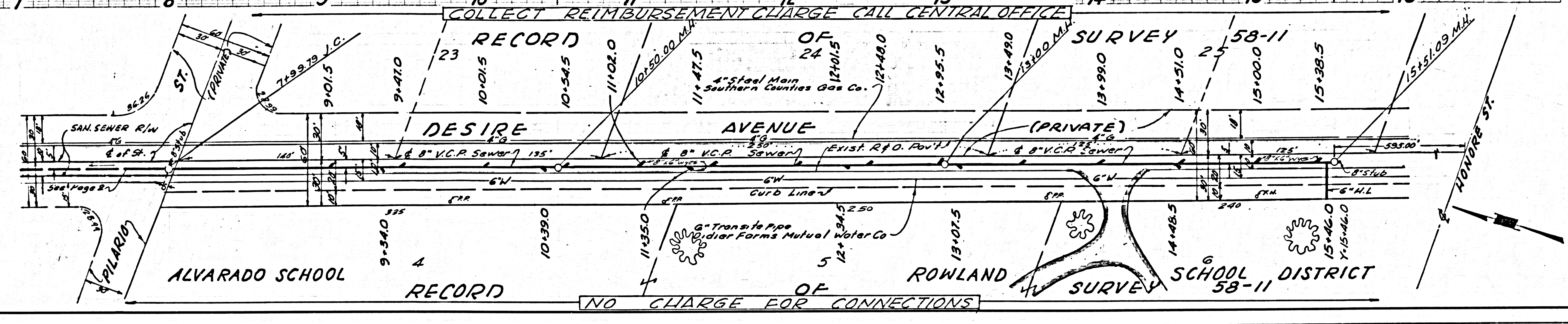
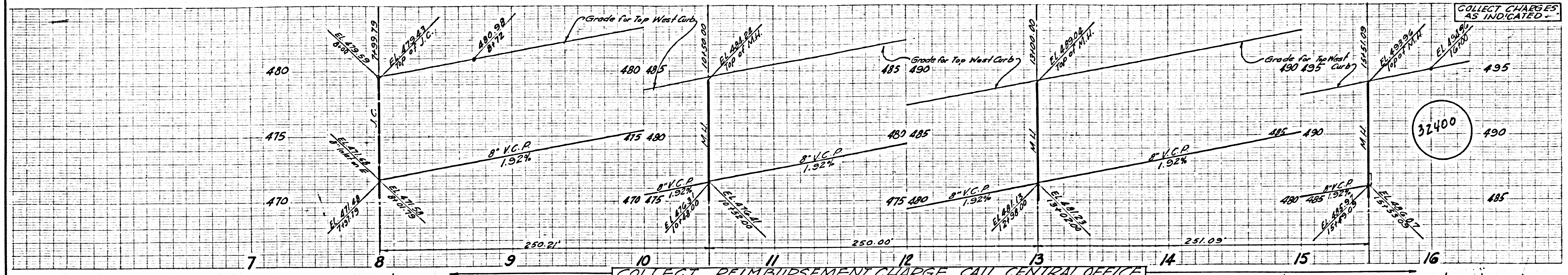
COLLECT CHARGES AS INDICATED  
*D. C. Hoffman* 7/24/62



COLLECT CHARGES AS INDICATED

32399

COLLECT CHARGES AS INDICATED



NO CHARGE FOR CONNECTIONS