

SAN DIMAS BLDG. DIST. NO. 10

PROFILE ALIGNMENT AND GRADE OF P.C. 6002
 SANITARY SEWERS PAGE 1
 TO BE CONSTRUCTED IN J.N. 035672

TRACT No 25985

PRIVATE CONTRACT NO. 6002

W.S. 39
 5 SHEETS; 10 PAGES
 SCALE: VERT. 1"=4' HORIZ. 1"=40'
 AUGUST, 1961
 PREPARED IN THE OFFICES OF
 DUTCH HOLZHAUER & ASSOCIATES

31467

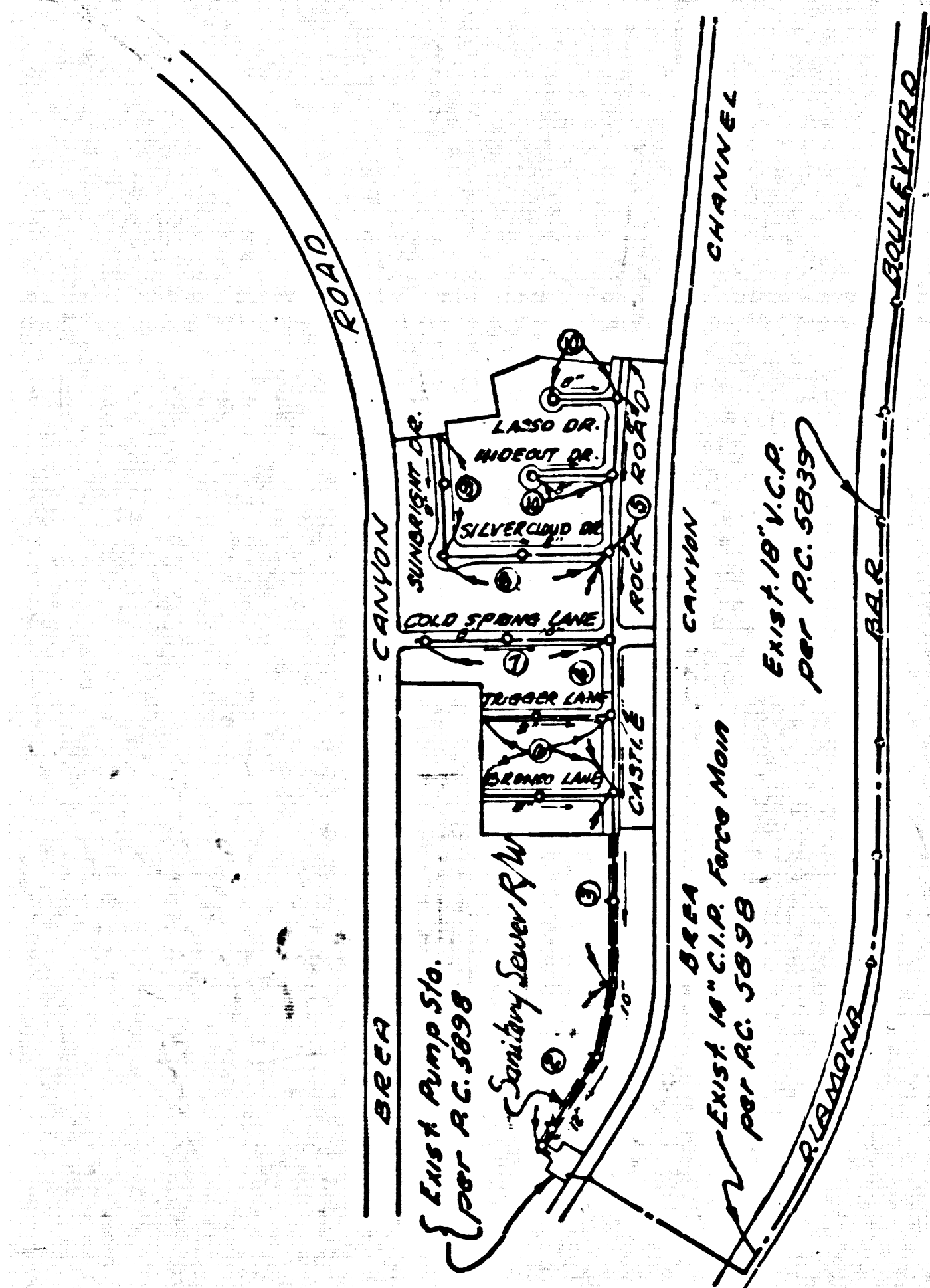
By: J. E. Carlat
 REG. C. E. NO. 2448

FOR LEGEND SEE PLAN NO. S-A-64

- NOTES:
1. PROVIDE STAKES ON THE PROPERTY LINE OR PROPERTY LINES PRODUCED AT RIGHT ANGLES TO THE SEWER LINE AT THE CENTER LINE OF EACH MANHOLE.
 2. NO REPRESENTATIVE OF THE COUNTY ENGINEER WILL SURVEY OR LAY OUT ANY PORTION OF THE WORK.
 3. THE OWNER OR HIS AUTHORIZED REPRESENTATIVE SHALL FURNISH THE COUNTY ENGINEER WITH GRADE SHEETS AND STATIONING FOR ALL HOUSE LATERALS AND Y BRANCHES AND SHALL PROVIDE STAKES FOR THEM AT THEIR PROPER LOCATIONS WITH STATIONING PLAINLY MARKED. ANY CHANGE IN LOCATION SHALL BE REQUESTED IN WRITING BY THE OWNER OR HIS REPRESENTATIVE.
 4. THE PRIVATE ENGINEER SHALL FURNISH THE HOUSE LATERAL DEPTH AT THE PROPERTY LINE BELOW THE TOP OF CURB ELEVATION FOR EACH HOUSE LATERAL ON THE GRADE SHEET.
 5. NO REVISIONS SHALL BE MADE IN THESE PLANS WITHOUT THE APPROVAL OF THE COUNTY ENGINEER.
 6. USE STANDARD MANHOLE FRAMES AND COVERS, S-117
 7. USE EXTRA STRENGTH PIPE ALL PIPE STANDARD DEPTH EXCEPT AS NOTED
 8. USE CEMENT MORTAR OR "WEDGE-LOCK" OR "SPEED-SEAL" FOR ALL V.C.P. JOINTS PER SPECS. SECS. 34 & 44.
 9. RESURFACE ALL TRENCH WITHIN PAVED AREA TO MEET L.A. COUNTY ROAD DEPT. OR CALIF. STATE HIGHWAY REQUIREMENTS IN ACCORDANCE WITH PERMITS.
 10. ENCASE FOUR FEET OF SEWER AT POINTS OF INTERFERENCE WITH POLES, CASE III, S-172.
 11. HOUSE LATERALS TO BE CONSTRUCTED WITH INTERTS AT PROPERTY LINE 2 FEET BELOW CURB GRADE
 12. ALL STD. MANHOLE STRUCTURES SHALL BE PER S-A-106, OR S-A-135, OR S-A-173.
 13. FOR ALLOWABLE LEAKAGE TEST USE FORMULA NO. 1 SPEC. SEC. 34.
 14. MANHOLE TOPS IN UNIMPROVED RIGHTS-OF-WAY TO BE SIX INCHES ABOVE FINISHED GRADE.
 15. THE CONTRACTOR SHALL NOTIFY THE CONSTRUCTION DIVISION BY TELEPHONE, MADISON 9-4747, EXT. 8561, AT LEAST TWENTY-FOUR HOURS BEFORE STARTING ANY WORK UNDER THIS CONTRACT.
 16. STANDARD SPECIFICATIONS DATED OCT. 10, 1960 APPLY IN CONSTRUCTION OF THIS PROJECT

BENCH MARK
 S.O. 1809 ROAD DEPARTMENT BM 748
 NEAR SOUTH END CONCRETE HEADWALL
 ON 140' x 33' x 20' WEST of BEEA CANYON
 ROAD 0.65 MILES NORTH OF BEEA
 CANYON CUTOFF ROAD
 ELEV. 727.34

PRIVATE ENGINEER'S NOTICE TO CONTRACTOR
 The existence and location of any underground utility pipes or structures shown on these plans are obtained by a search of the available records. To the best of our knowledge there are no existing utilities or structures except as shown on these plans.
 The contractor is required to take due precautionary measures to protect the utility lines or structures shown and any other lines and structures not of record or not shown on these plans.
 J. E. Carlat
 P.C.E. No 8448



INDEX MAP
 TRACT No 25985
 SCALE: 1"=600'

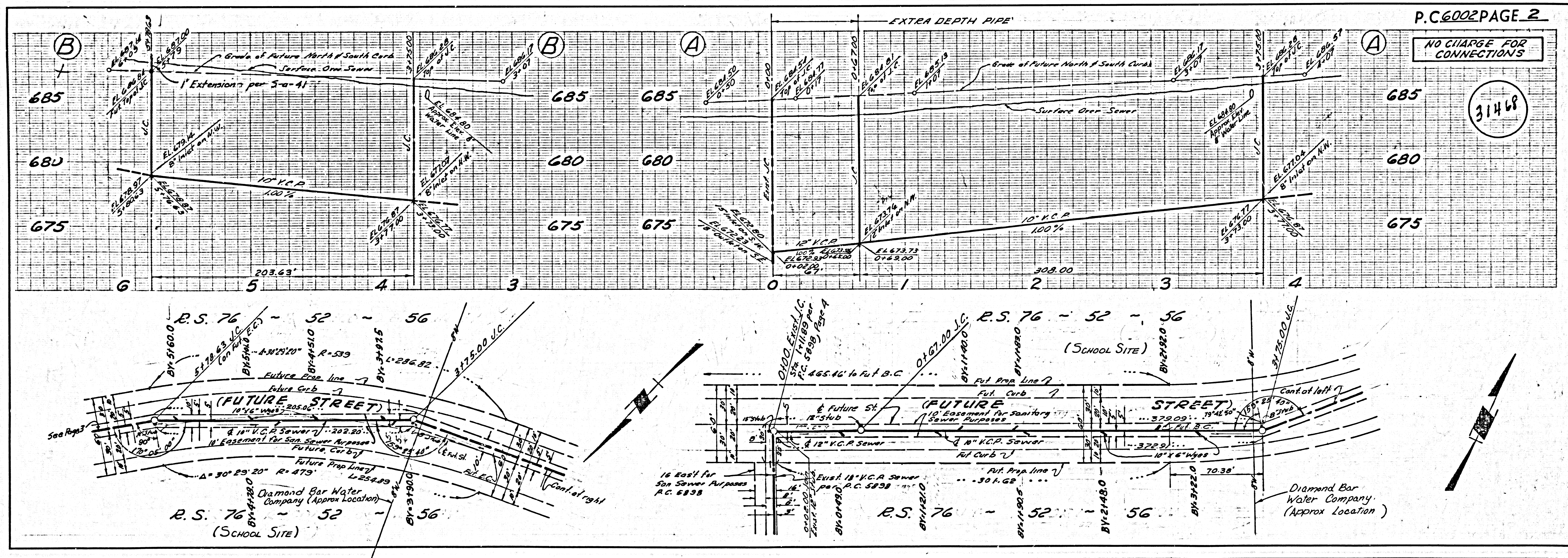
REVISION
 Page 9 Revised Sewer & Street Grades on Sun Bright Drive Sta. 8174.58 to Sta. 8198.35
 Page 10A Revised Street Grades Lasso Drive & lowered Top of M.H. at Sta. 3105.24
 BY: W.C. Reinhardt
 SAN DIMAS REGIONAL ENGINEER Date: 10-20-61

NO CHARGE FOR CONNECTIONS
 7.7% 10-19-61

NO CONNECTIONS FOR THE DISPOSAL OF INDUSTRIAL WASTES SHALL BE MADE TO SEWERS SHOWN ON THESE DRAWINGS WITHOUT WRITTEN PERMISSION FROM THE CHIEF ENGINEER AND GENERAL MANAGER OF THE COUNTY SANITATION DISTRICTS.

NOTE:
 GRADES TO WHICH THIS IMPROVEMENT IS TO BE CONSTRUCTED ARE SHOWN ON PLANS AND PROFILES. GRADE POINTS FOR TOP OF CURBS, CENTER LINE OF STREETS, OR CENTER LINE OF ALLEYS ARE SHOWN BY CIRCLES ON PROFILES. AT ALL POINTS BETWEEN DESIGNATED POINTS THE GRADE SHALL BE ESTABLISHED SO AS TO CONFORM TO A STRAIGHT LINE DRAWN BETWEEN SAID DESIGNATED POINTS.
 ELEVATIONS ARE IN FEET ABOVE U.S.C. & G.S. SEA LEVEL DATUM OF 1929.
 THIS DRAWING AND THE DATA HEREON ARE HEREBY MADE A PART OF THE SPECIFICATIONS.
 WORK SHALL BE CONSTRUCTED ACCORDING TO SPECIFICATIONS ON FILE IN THE OFFICE OF THE COUNTY ENGINEER AND SHALL BE PROSECUTED ONLY IN THE PRESENCE OF THE COUNTY ENGINEER.
 BEFORE WORK CAN BE STARTED THE CONTRACTOR MUST OBTAIN A PERMIT TO EXCAVATE IN COUNTY STREETS FROM THE L.A. COUNTY ROAD DIST. DISTRICT OFFICE NO. 1 AND 1044 1/2 PAGE 72 THE COUNTY ENGINEER, ROOM 510, L.A. COUNTY ENGINE BLDG., 108 W. 245 ST. SUFFICIENT TO COVER THE COST OF CONSTRUCTION INSPECTION AND RECORD PLANS.
 APPROVAL OF THIS PLAN BY THE COUNTY OF LOS ANGELES DOES NOT CONSTITUTE A REPRESENTATION AS TO THE ACCURACY OF THE LOCATION OF OR THE EXISTENCE OR NON-EXISTENCE OF ANY UNDERGROUND UTILITY PIPE, OR STRUCTURE WITHIN THE LIMITS OF THIS PROJECT. THIS NOTE APPLIES TO ALL PAGES.
 IF WORK IS TO BE DONE IN A STATE HIGHWAY, A PERMIT MUST BE OBTAINED FROM THE STATE OF CALIFORNIA, DIVISION OF HIGHWAYS, 120 SOUTH SPRING STREET.

COUNTY OF LOS ANGELES, CALIFORNIA
 APPROVED, JOHN A. LAMBIE, COUNTY ENGINEER APPROVED, J.D. FRENCH, CHIEF ENGINEER
 DIST. SAN. DIST. NO. 21
 BY: J. E. Carlat, SANITATION ENGINEER BY: J. D. French, OFFICE ENGINEER
 CHECKED BY: S.K. Underwood, 10-20-61
 OFFICE OF COUNTY ENGINEER, REG. C. E. NO. 2448
 SUBMITTED: P.M. Slaughter, 10-19-61
 SAN DIMAS REGIONAL OFFICE

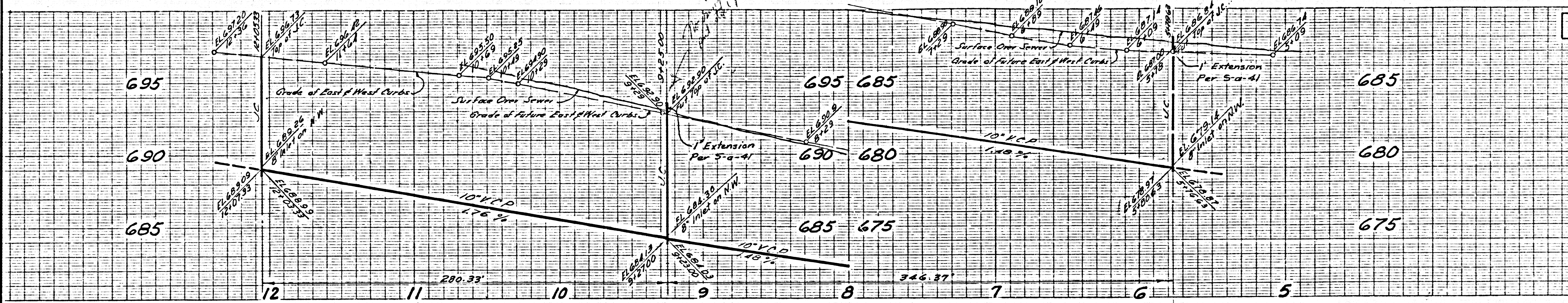


P.C. 6002 PAGE 2

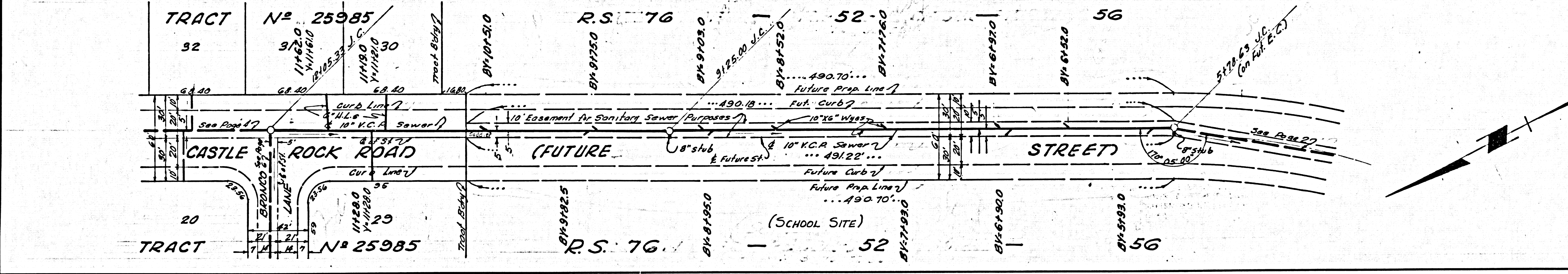
NO CHARGE FOR CONNECTIONS

31468

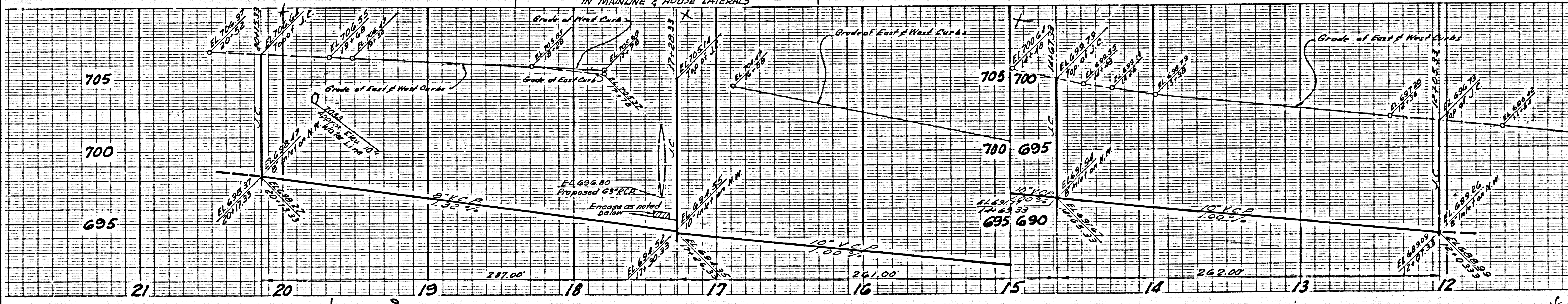
NO CHARGE FOR CONNECTIONS



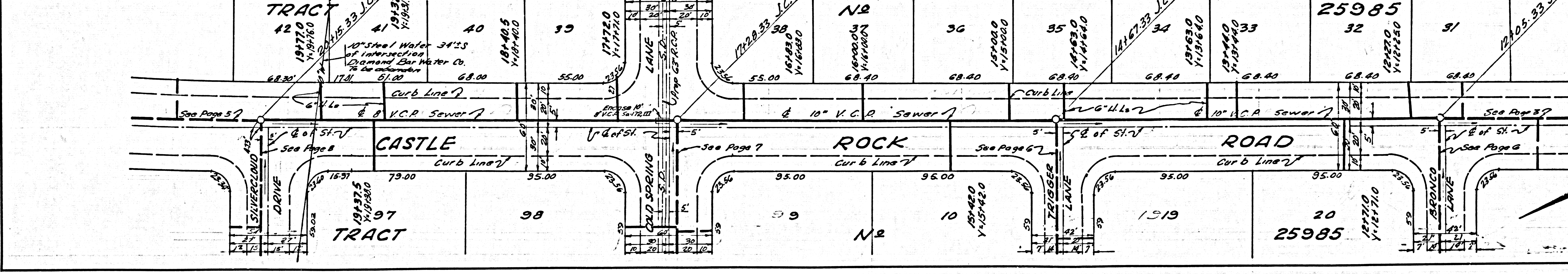
31469



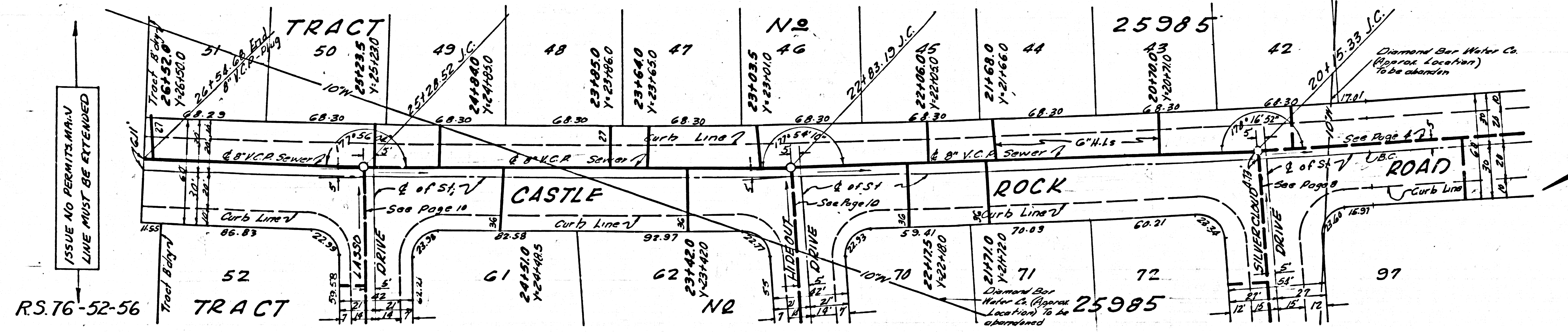
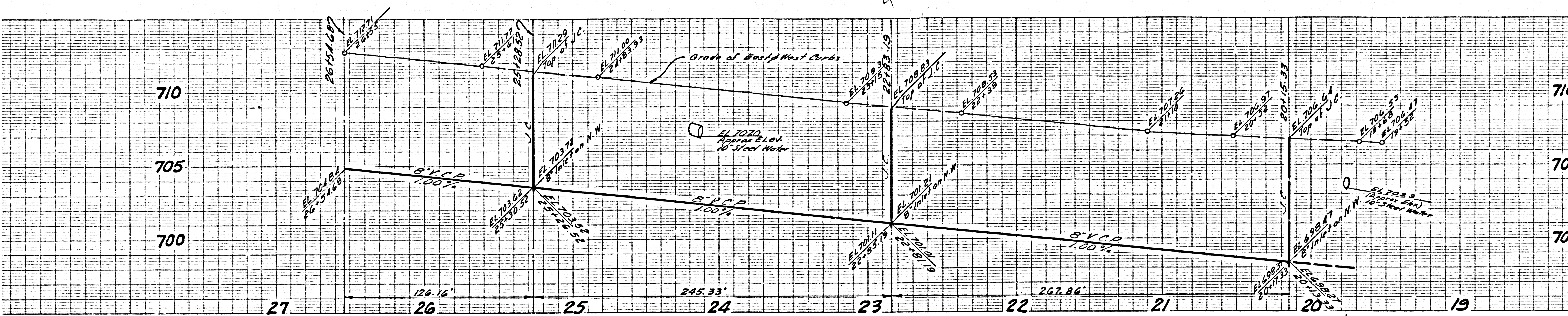
NO CHARGE FOR CONNECTIONS



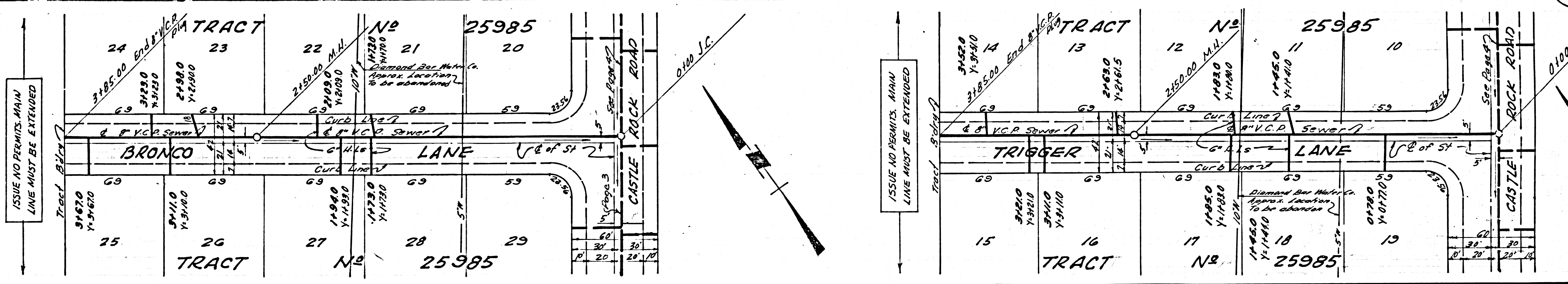
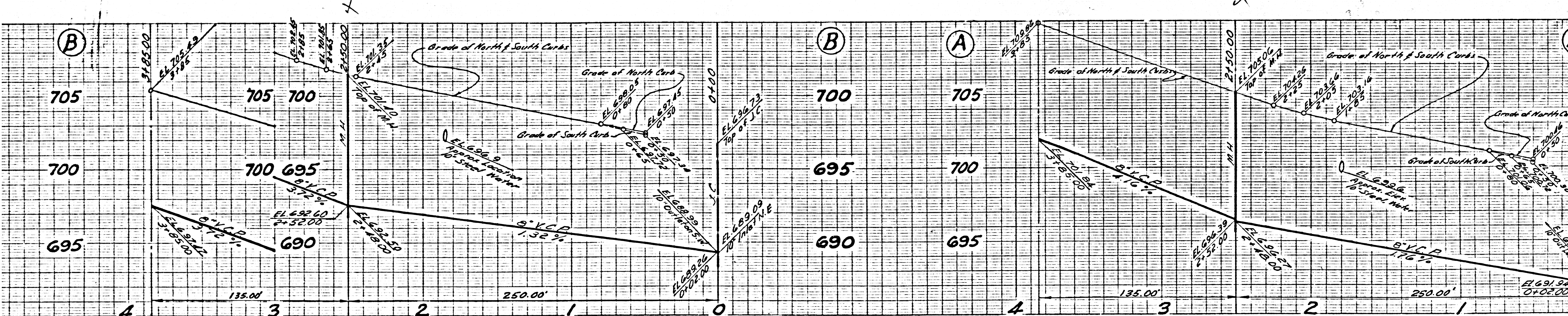
31470



NO CHARGE FOR CONNECTIONS

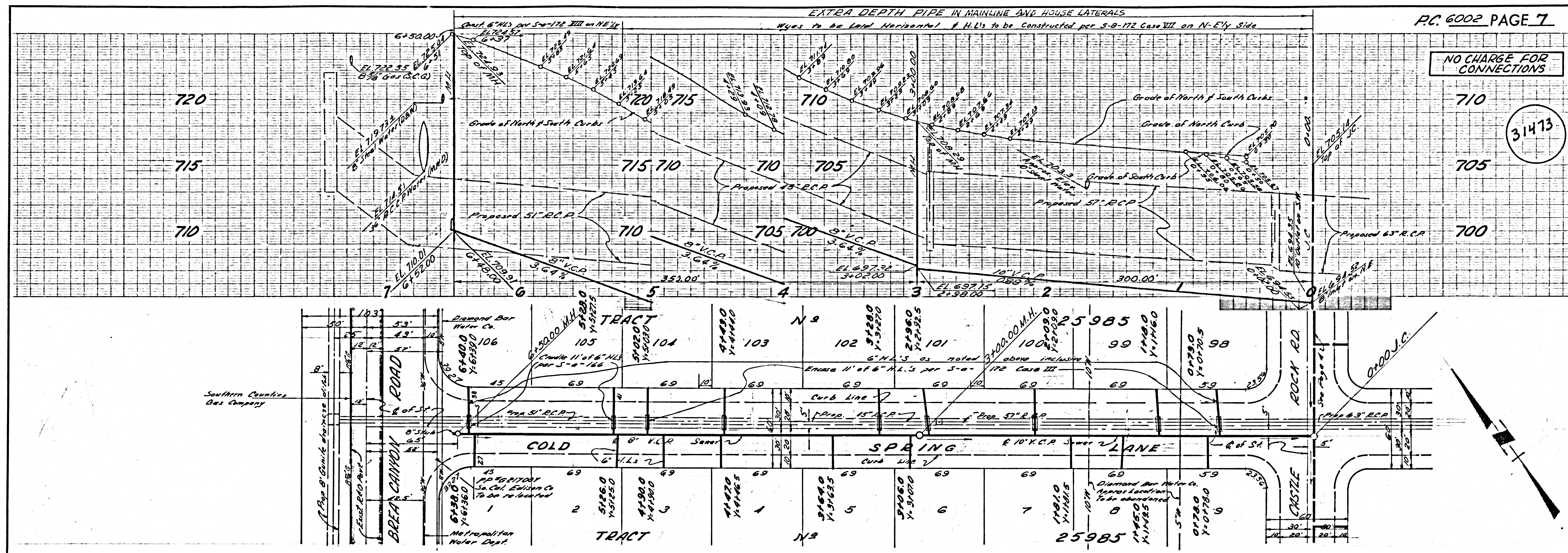


NO CHARGE FOR CONNECTIONS



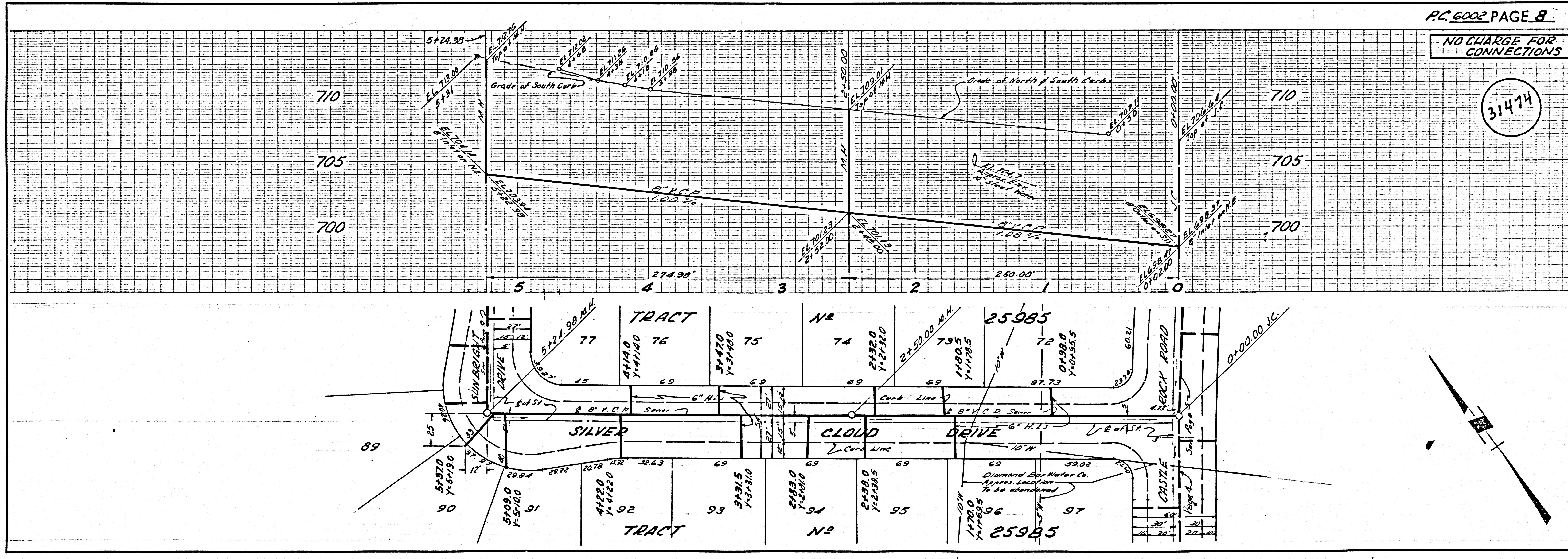
NO CHARGE FOR CONNECTIONS

31473

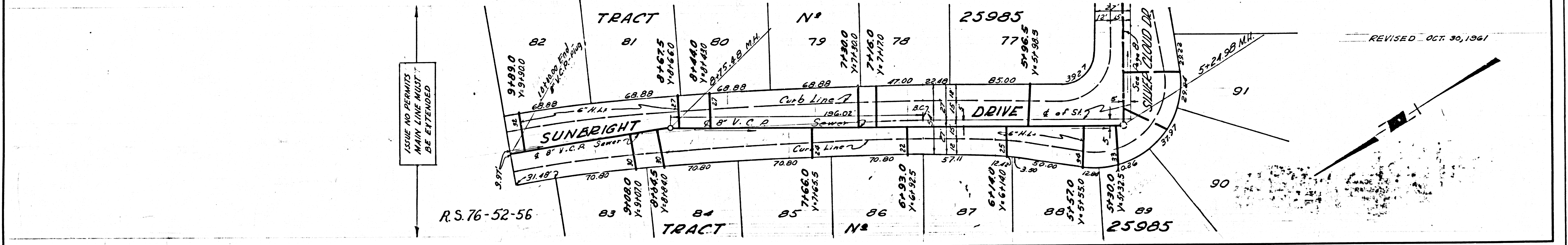
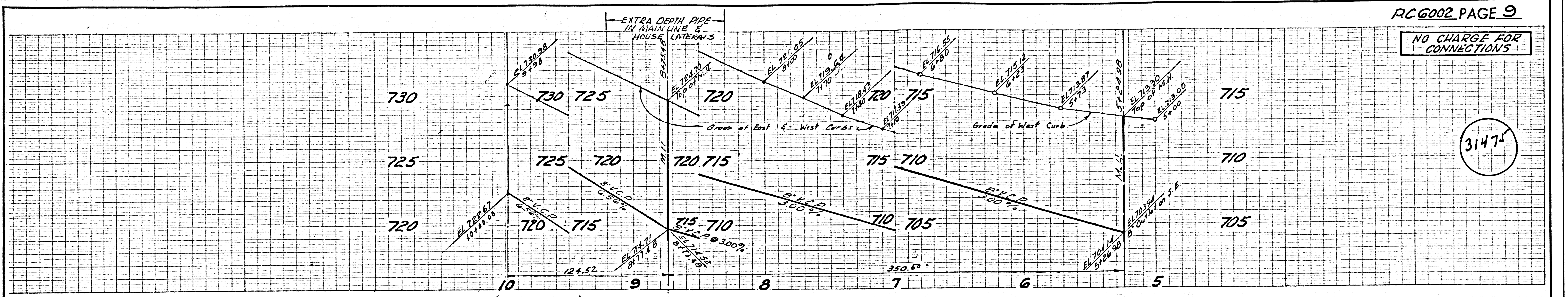


NO CHARGE FOR CONNECTIONS

31474



NO CHARGE FOR CONNECTIONS



NO CHARGE FOR CONNECTIONS

